

8/17/99

PLANS PREPARED BY:
PARSONS
RALEIGH, NORTH CAROLINA, (919) 854-1345
NC LICENSE NO. F-0246
FOR NORTH CAROLINA DEPT. OF TRANSPORTATION

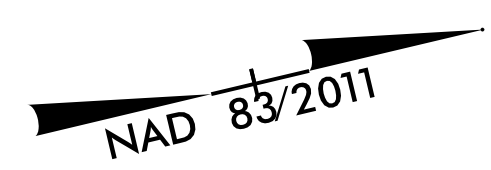
PROJECT REFERENCE NO. 1-40 SHEET NO. EC-12 /CONST.07

RW SHEET NO. ROADWAY DESIGN ENGINEER HYDRAULICS ENGINEER

DOCUMENT NOT CONSIDERED FINAL UNLESS ALL SIGNATURES COMPLETED

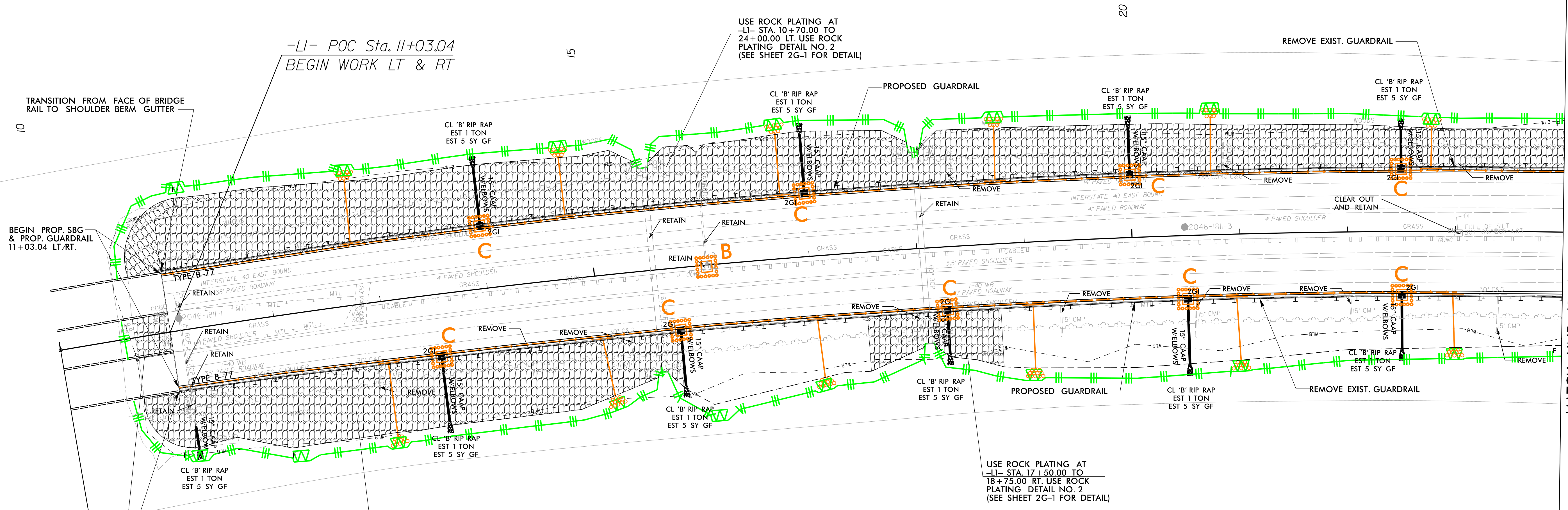
FINAL GRADING EROSION CONTROL FOR CONSTRUCTION SHEET 7

THE OUTSIDE BUFFER, WETLAND OR WATER BOUNDARY SHALL BE CLEARLY MARKED BY HIGHLY VISIBLE FENCING (ORANGE SAFETY FENCE)



REVISIONS

I:\LUL_2020_1342\Reposits\Erosion Control\Plans\1-40_EC07_PSH_12.dgn
17:40:50
08/17/2011



-L1- POC Sta. 11+03.04
BEGIN WORK LT & RT

BEGIN PROP. SBG & PROP. GUARDRAIL 11+03.04 LT./RT.

ROCK PLATING ENDBENT SLOPE.
-L1- STA. 10+70.00 TO 11+03 LT./RT.
USE ROCK PLATING DETAIL NO. 2
(SEE SHEET 2G-1 FOR DETAIL)

USE ROCK PLATING AT
-L1- STA. 10+70.00 TO 15+75.00 RT. USE ROCK PLATING DETAIL NO. 2
(SEE SHEET 2G-1 FOR DETAIL)

Place Matting for Erosion Control on Slope as Work Allows.
-L1- Sta. 15+75 to Sta. 17+50 RT

USE ROCK PLATING AT
-L1- STA. 17+50.00 TO 18+75.00 RT. USE ROCK PLATING DETAIL NO. 2
(SEE SHEET 2G-1 FOR DETAIL)

Place Matting for Erosion Control on Slope as Work Allows.
-L1- Sta. 18+75 to Sta. 24+00 RT

SEE SHEET 10 FOR -L1- PROFILE

MATCH LINE -L1- STA 24+00 SEE SHEET EC-13