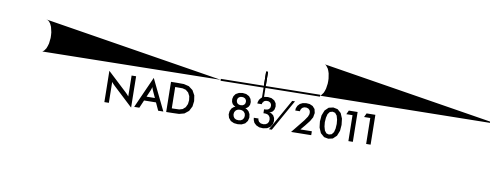


8/17/99

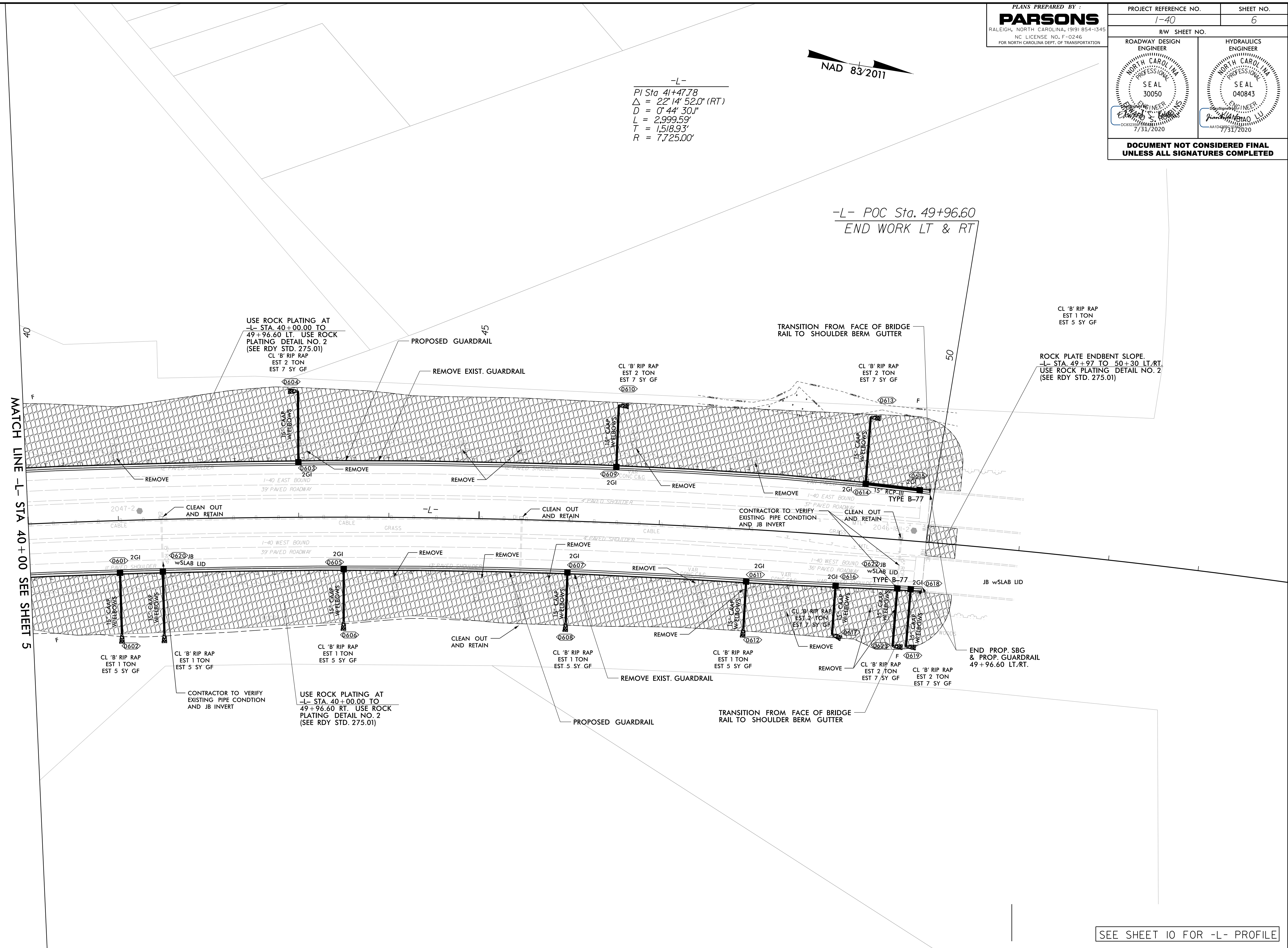
PLANS PREPARED BY:
PARSONS
RALEIGH, NORTH CAROLINA, (919) 854-1345
 NC LICENSE NO. F-0246
 FOR NORTH CAROLINA DEPT. OF TRANSPORTATION

PROJECT REFERENCE NO. 1-40	SHEET NO. 6
RW SHEET NO.	
ROADWAY DESIGN ENGINEER 	HYDRAULICS ENGINEER
DOCUMENT NOT CONSIDERED FINAL UNLESS ALL SIGNATURES COMPLETED	



-L-
 PI Sta 41+47.78
 $\Delta = 22^{\circ}14'52.0''$ (RT)
 D = 0'44'30.1"
 L = 2,999.59'
 T = 1,518.93'
 R = 7,725.00'

-L- POC Sta. 49+96.60
 END WORK LT & RT



MATCH LINE -L- STA 40+00 SEE SHEET 5

SEE SHEET 10 FOR -L- PROFILE

3/1/2020 08:50
 C:\Users\jgarcia\Documents\Roadway\Proj\1-40_RDY_PSH_06.dgn
 \$\$\$\$USERNAME\$\$\$\$