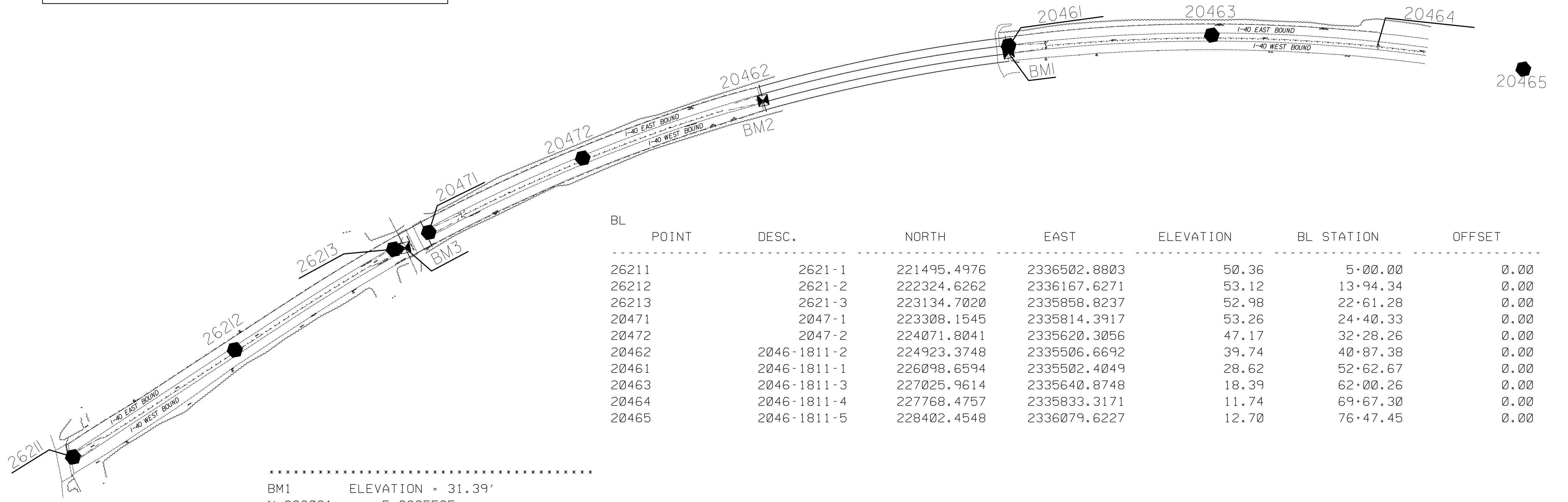
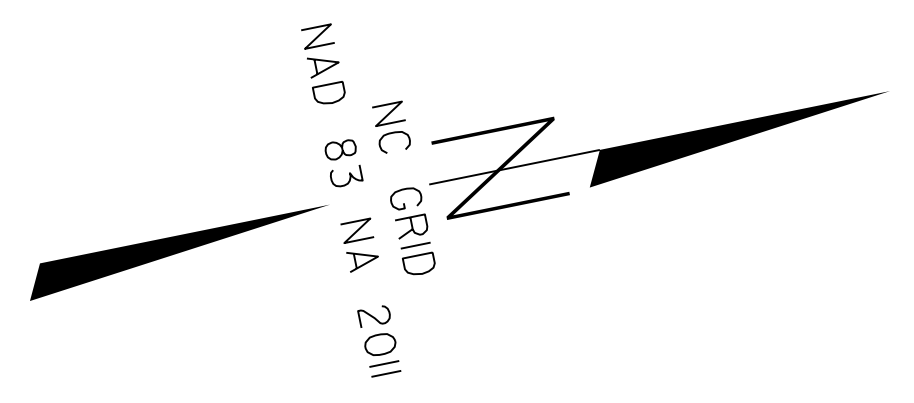


DATUM DESCRIPTION

THE LOCALIZED COORDINATE SYSTEM DEVELOPED FOR THIS PROJECT IS BASED ON THE STATE PLANE COORDINATES ESTABLISHED BY NCGS FOR MONUMENT "CAPE"
 WITH NAD 83/NA 2011 STATE PLANE GRID COORDINATES OF
 NORTHING: 225782.86(ft) EASTING: 2332770.81(ft)
 ELEVATION: 32.46(ft)
 THE AVERAGE COMBINED GRID FACTOR USED ON THIS PROJECT (GROUND TO GRID) IS: 0.99999550

ALL LINEAR DIMENSIONS ARE LOCALIZED HORIZONTAL DISTANCES
 VERTICAL DATUM USED IS NAVD 88

SURVEY CONTROL SHEET



BL	POINT	DESC.	NORTH	EAST	ELEVATION	BL STATION	OFFSET
	26211	2621-1	221495.4976	2336502.8803	50.36	5+00.00	0.00
	26212	2621-2	222324.6262	2336167.6271	53.12	13+94.34	0.00
	26213	2621-3	223134.7020	2335858.8237	52.98	22+61.28	0.00
	20471	2047-1	223308.1545	2335814.3917	53.26	24+40.33	0.00
	20472	2047-2	224071.8041	2335620.3056	47.17	32+28.26	0.00
	20462	2046-1811-2	224923.3748	2335506.6692	39.74	40+87.38	0.00
	20461	2046-1811-1	226098.6594	2335502.4049	28.62	52+62.67	0.00
	20463	2046-1811-3	227025.9614	2335640.8748	18.39	62+00.26	0.00
	20464	2046-1811-4	227768.4757	2335833.3171	11.74	69+67.30	0.00
	20465	2046-1811-5	228402.4548	2336079.6227	12.70	76+47.45	0.00

```

*****
BM1      ELEVATION = 31.39'
N 226091      E 2335535
BL STATION 52+55.00 32' RIGHT
SQUARE CUT IN CONC
*****

*****
BM2      ELEVATION = 40.10'
N 224939      E 2335525
BL STATION 41+03.00 19' RIGHT
SQUARE CUT IN CONC
*****

*****
BM3      ELEVATION = 54.08'
N 223186      E 2335862
BL STATION 23+10.00 16' RIGHT
SQUARE CUT IN CONC
*****
    
```

NOTES:

- IF FURTHER INFORMATION REGARDING PROJECT CONTROL IS NEEDED, PLEASE CONTACT THE LOCATION AND SURVEYS UNIT.
- PROJECT CONTROL WAS ESTABLISHED USING GNSS, THE GLOBAL NAVIGATION SATELLITE SYSTEM.

5/14/99
 17-JUL-2020 15:17
 S:\017\2020\1517\170724\170724.dwg