

**NOTES**

FOR FOAM JOINT SEALS FOR PRESERVATION, SEE SPECIAL PROVISIONS.

THE INSTALLED FOAM JOINTS SHALL BE WATER TIGHT.

THE FOAM JOINTS SHALL MEET THE MANUFACTURER'S RECOMMENDATION FOR THE SIZE OF OPENING ON THE PLANS, AND ACCOMMODATE THE MINIMUM EXPANSION SHOWN ON THE PLANS.

THE CONTRACTOR WILL NOT BE PERMITTED TO FORM THE JOINTS IN LIEU OF SAWING THE JOINT.

DURING THE JOINT INSTALLATION PROCEDURE, THE JOINT AND SURROUNDING AREA SHALL BE KEPT CLEAN AND FREE OF DEBRIS.

THE MANUFACTURER IS TO PROVIDE THE NOMINAL UNCOMPRESSED SEAL WIDTH OF THE FOAM JOINT SEAL BASED ON JOINT OPENINGS AT THE BENTS.

A MANUFACTURER'S CERTIFIED TRAINED REPRESENTATIVE SHALL BE PRESENT DURING THE INSTALLATION OF THE FIRST JOINT OF THE PROJECT, OR UNTIL THE ENGINEER IS SATISFIED WITH THE INSTALLATION PROCESS.

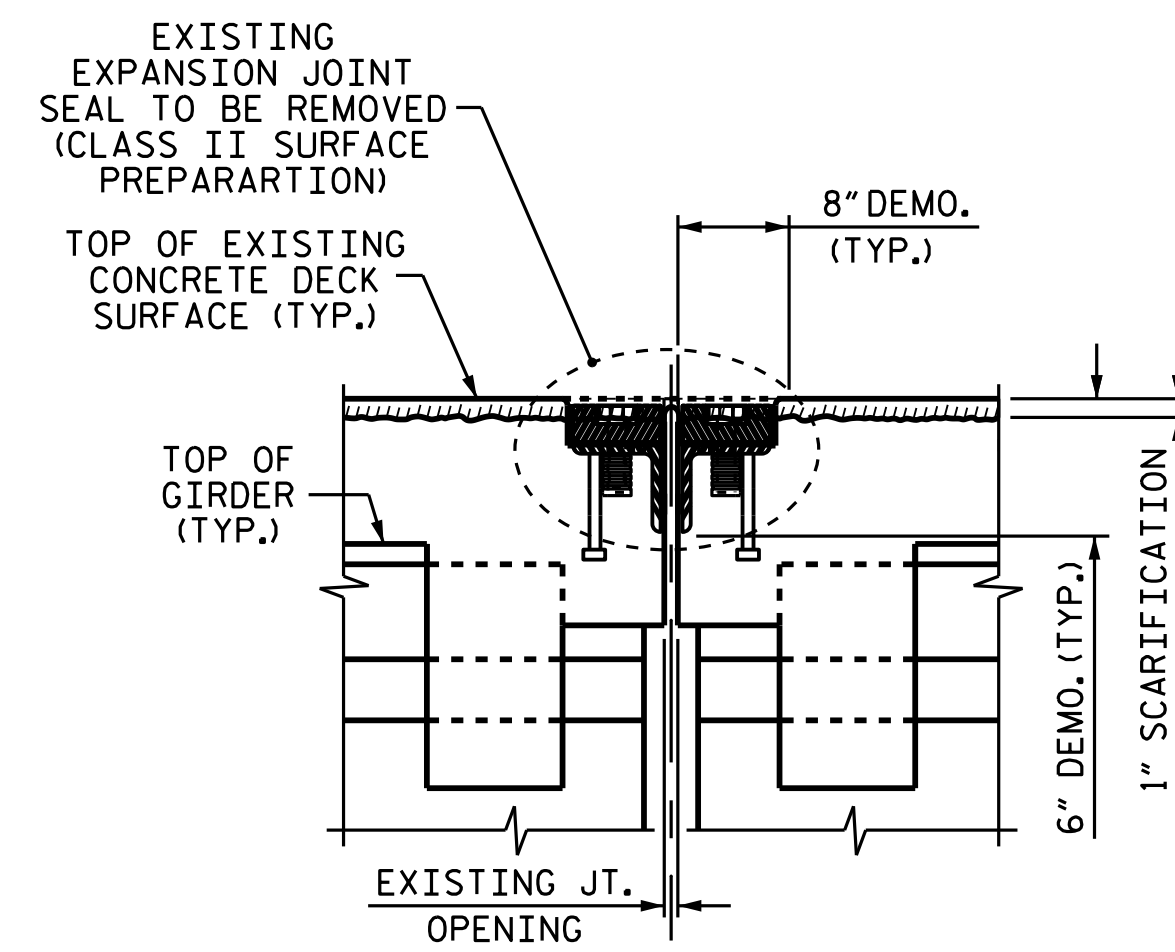
FINAL JOINT SEALS SHALL NOT BE INSTALLED UNTIL THE OVERLAY IS COMPLETE.

THE CONTRACTOR SHALL TAKE CARE DURING JOINT REHAB OPERATIONS NOT TO DROP ANY MATERIAL BELOW THE BRIDGE WITHOUT PROTECTIVE DEVICES BELOW TO CATCH THE MATERIAL. ANY MATERIAL THAT FALLS BELOW THE BRIDGE SHALL BE CONTAINED, REMOVED AND DISPOSED OF BY THE CONTRACTOR AT NO EXTRA COST TO THE DEPARTMENT. IF THE ENGINEER DETERMINES THAT THE PROTECTIVE DEVICES ARE NOT ADEQUATE OR NOT BEING EMPLOYED, THE WORK SHALL BE SUSPENDED UNTIL ADEQUATE PROTECTION IS PROVIDED.

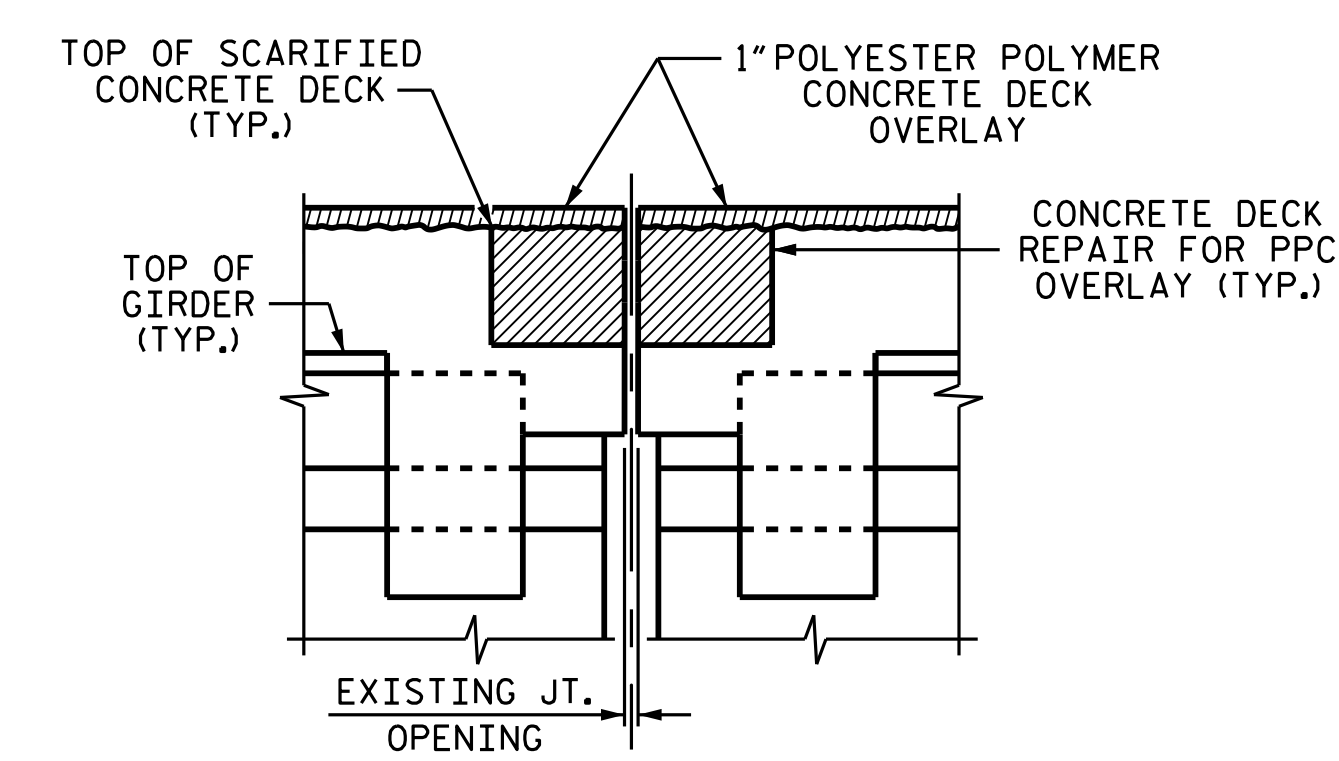
THE MANUFACTURER IS TO PROVIDE THE NOMINAL UNCOMPRESSED SEAL WIDTH OF THE BACKER ROD FOR THE EXISTING JOINT SIZE AND ACCOMMODATE THE MINIMUM EXPANSION SHOWN ON THE PLANS.

CONTRACTOR SHALL FIELD VERIFY THE EXISTING JOINT OPENING PRIOR TO ORDERING JOINT SEAL MATERIAL. IF ACTUAL JOINT OPENING VARIES FROM OPENING INDICATED IN DETAIL BY MORE THAN 1/4", NOTIFY ENGINEER REVISION TO THE JOINT SEAL SIZE MIGHT BE NECESSARY.

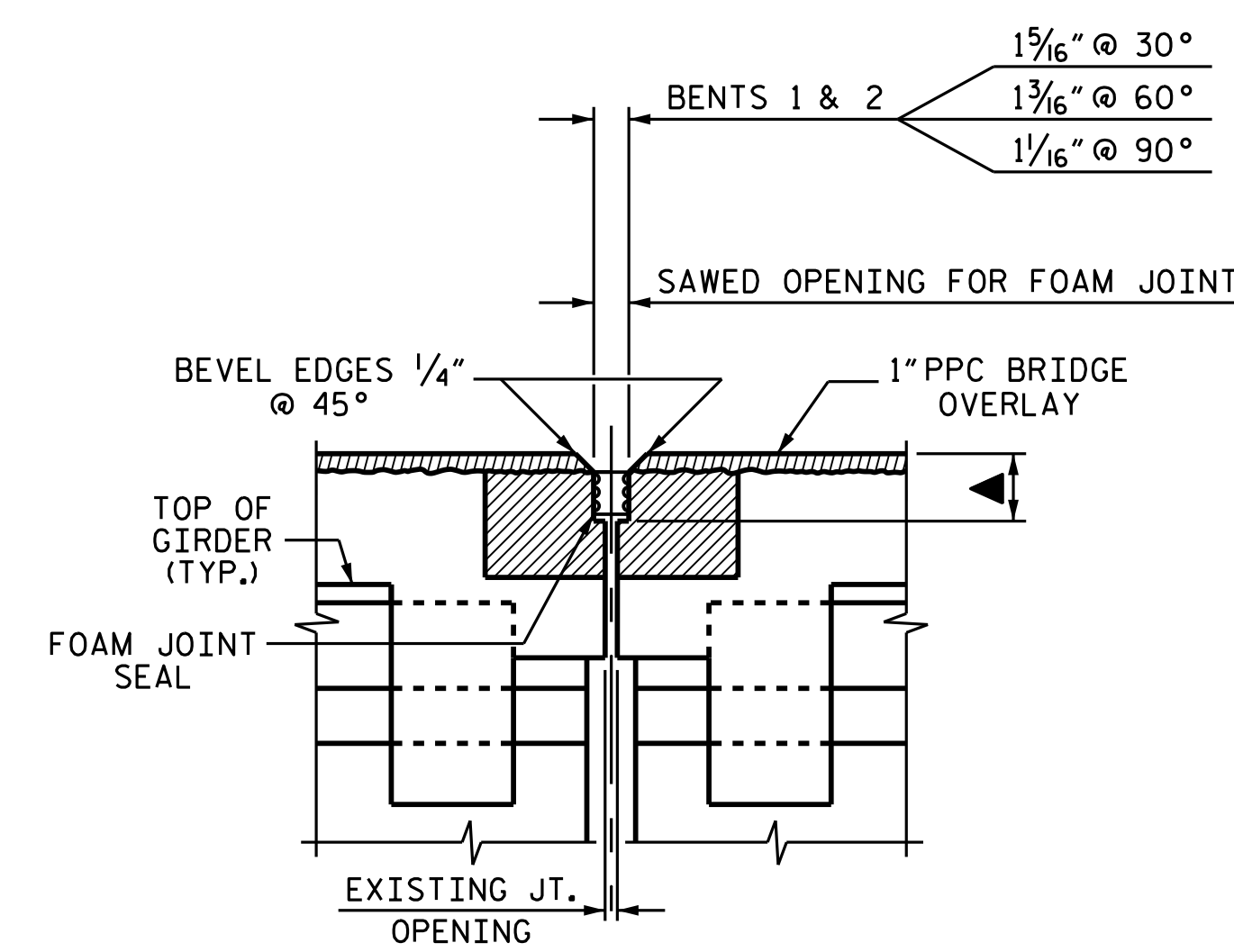
FINAL SURFACE OF THE JOINT DEMOLITION AREA PRIOR TO PLACEMENT OF CONCRETE REPAIR MATERIAL SHOULD BE REASONABLY FLAT AND LEVEL. ENGINEER SHALL DETERMINE THE ACCEPTABILITY OF THE SURFACE PRIOR TO PLACEMENT OF REPAIR CONCRETE.



MINIMUM EXISTING JOINT DEMOLITION



PROPOSED PRE-SAWED JOINT

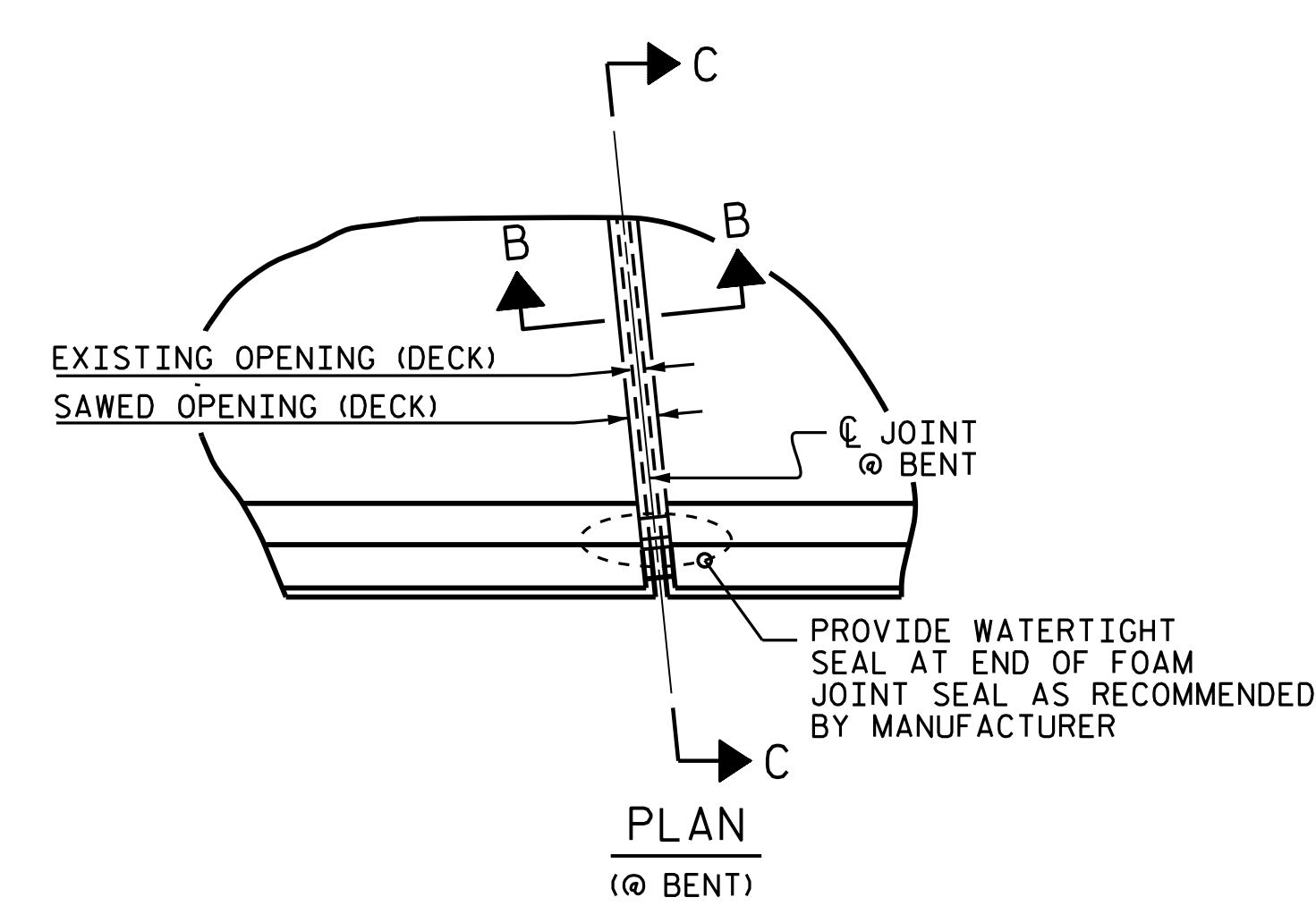


PROPOSED FOAM JOINT SEAL

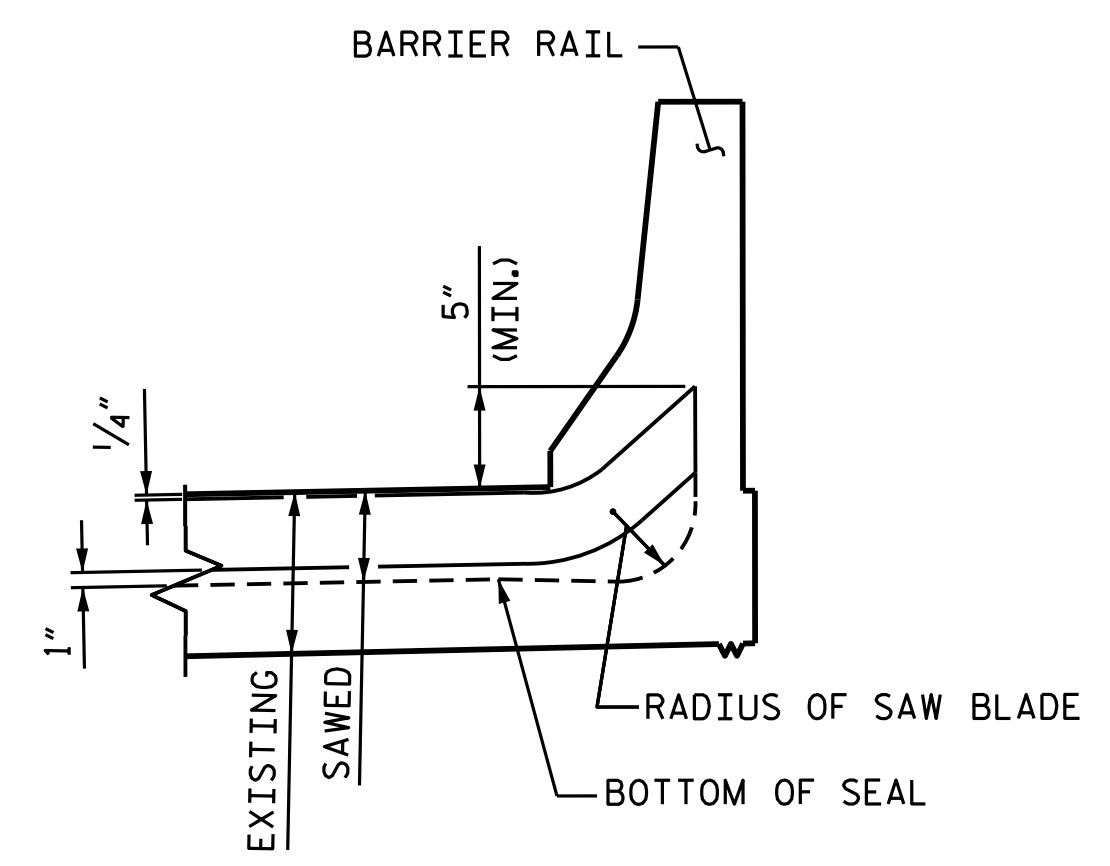
**JOINT INSTALLATION SEQUENCE AT BENTS**

SECTION B-B

▲ SAW CUT SHALL BE 3/4" BELOW THE BOTTOM OF THE JOINT SEAL, SEE MANUFACTURER RECOMMENDATIONS



PLAN @ BENT



SECTION C-C

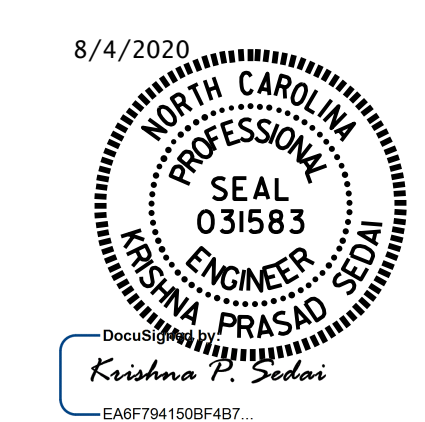
**JOINT SEAL DETAILS AT BENTS**

|         | CLASS II SURFACE PREPARATION | CONCRETE DECK REPAIR FOR PPC OVERLAY |
|---------|------------------------------|--------------------------------------|
| BENT 1  | 8.6 SY                       | 8.6 SY                               |
| BENT 2  | 8.7 SY                       | 8.7 SY                               |
| * TOTAL | 17.3 SY                      | 17.3 SY                              |

\* BASED ON THE MINIMUM BLOCKOUT SHOWN.

| FOAM JOINT SEALS FOR PRESERVATION | ESTIMATED | ACTUAL |
|-----------------------------------|-----------|--------|
| BENT 1                            | 57.9 LF   |        |
| BENT 2                            | 58.7 LF   |        |
| TOTAL                             | 116.6 LF  |        |

PROJECT NO. I-5795  
FORSYTH COUNTY  
 BRIDGE NO. 330481



STATE OF NORTH CAROLINA  
 DEPARTMENT OF TRANSPORTATION  
 RALEIGH

**JOINT DETAILS  
 BENTS 1 & 2**

| REVISIONS |     |       |     |     |       | SHEET NO.    |
|-----------|-----|-------|-----|-----|-------|--------------|
| NO.       | BY: | DATE: | NO. | BY: | DATE: | S9-05        |
| 1         |     |       | 3   |     |       | TOTAL SHEETS |
| 2         |     |       | 4   |     |       | 5            |

DRAWN BY : A. SORSENGINH DATE : 5/2020  
 CHECKED BY : E. BAYISSA DATE : 5/2020

DOCUMENT NOT CONSIDERED FINAL UNLESS ALL SIGNATURES COMPLETED