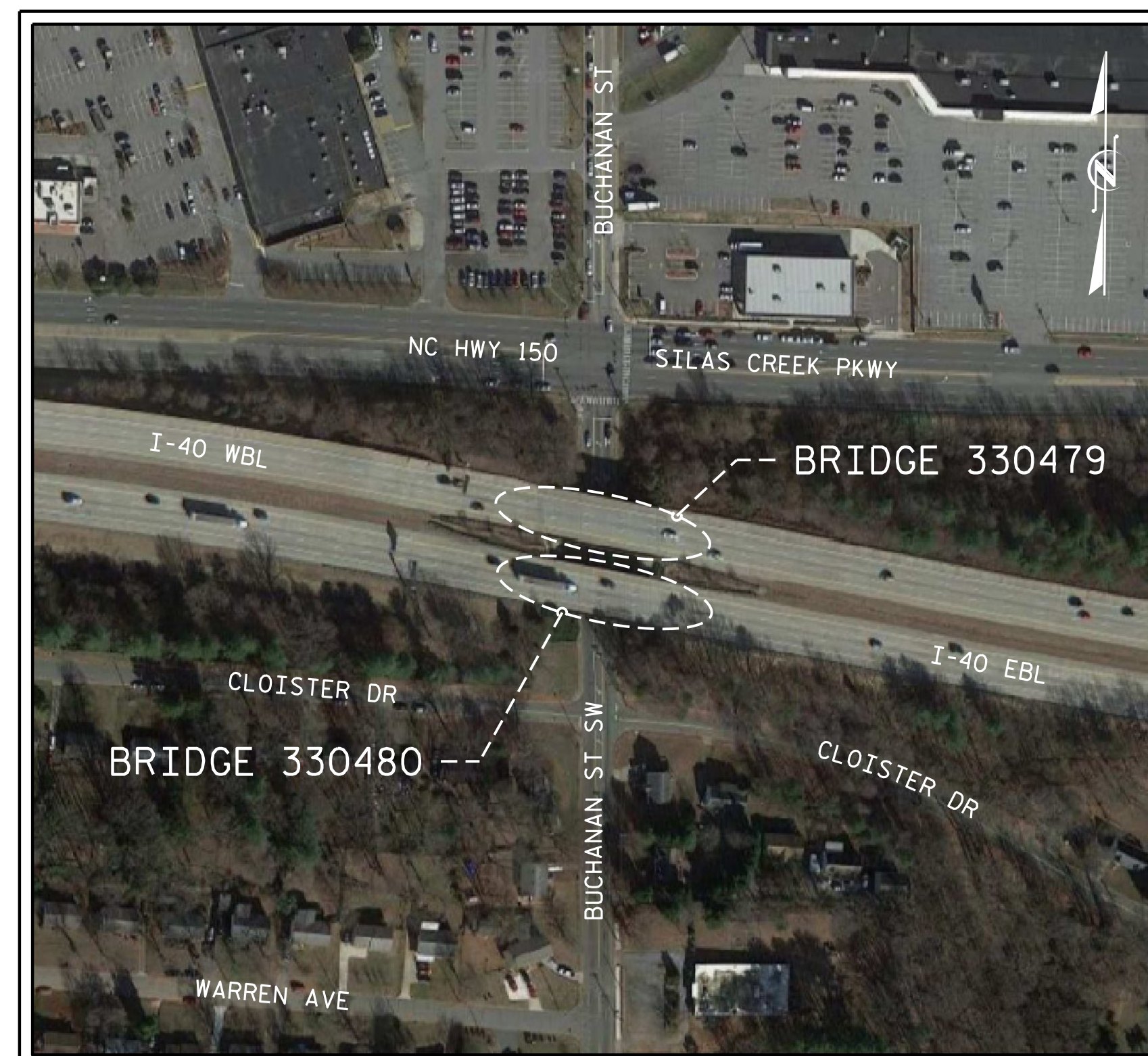


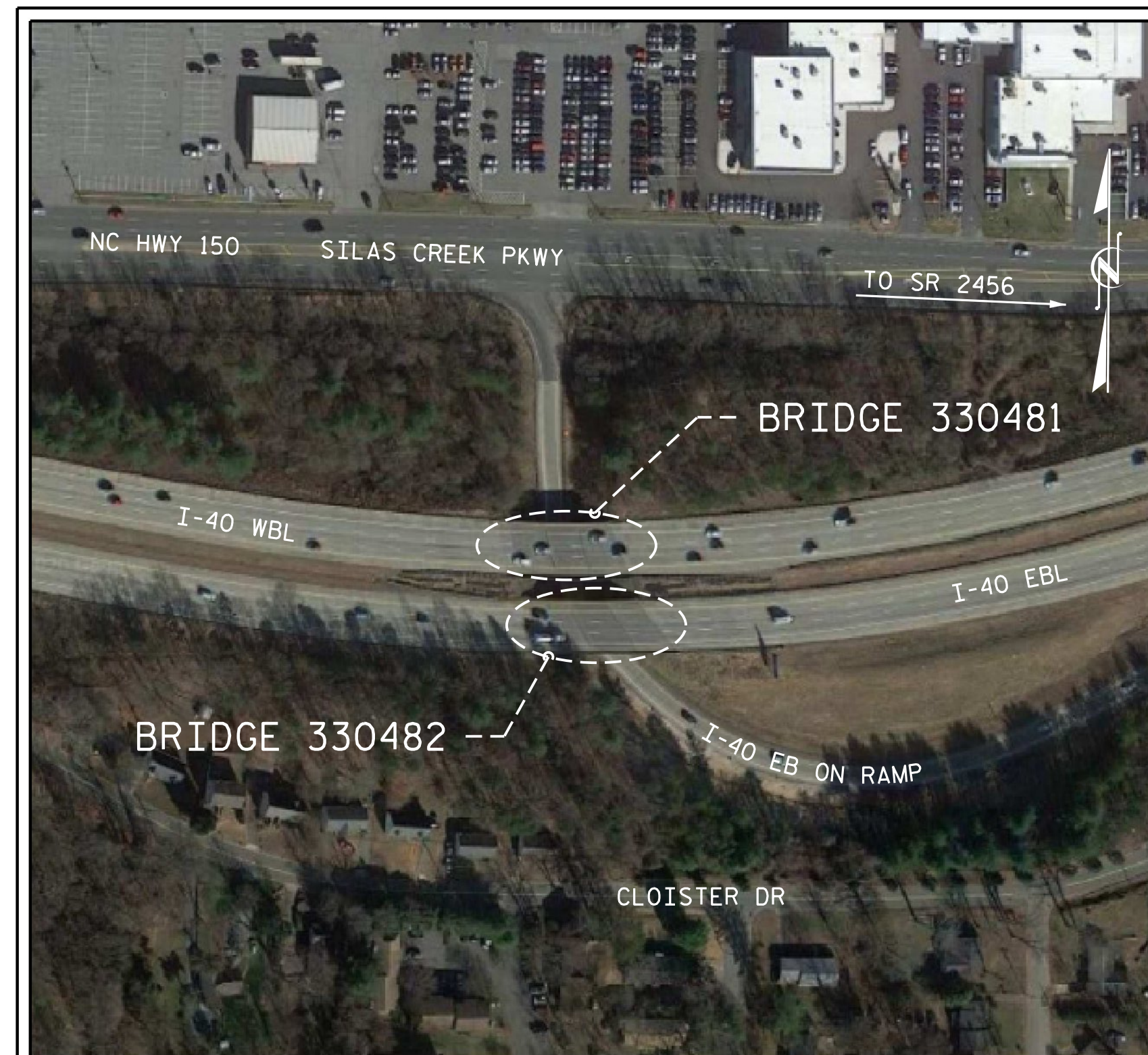
NOTES

INFORMATION INDICATED ON THE LOCATION SKETCH SHALL BE CONSIDERED GENERAL INFORMATION ONLY. THE CONTRACTOR SHALL CONFIRM, THROUGH OTHER SOURCES, SPECIFIC INFORMATION REGARDING BRIDGES, ROADWAYS, UTILITIES, THE SURROUNDING AREA, AND ANY OTHER ASPECTS THAT MAY BE NECESSARY TO PERFORM AND COMPLETE THE PROJECT.

BRIDGE COORDINATES		
BRIDGE No.	LATITUDE	LONGITUDE
330479	36°-03'-55.09"	80°-15'-06.77"
330480	36°-03'-54.25"	80°-15'-06.73"
330481	36°-03'-53.47"	80°-14'-53.69"
330482	36°-03'-52.66"	80°-14'-53.19"
330486	36°-03'-44.69"	80°-16'-12.36"
330487	36°-03'-43.90"	80°-16'-11.92"
330488	36°-03'-52.95"	80°-15'-46.68"
330489	36°-03'-52.25"	80°-15'-45.89"



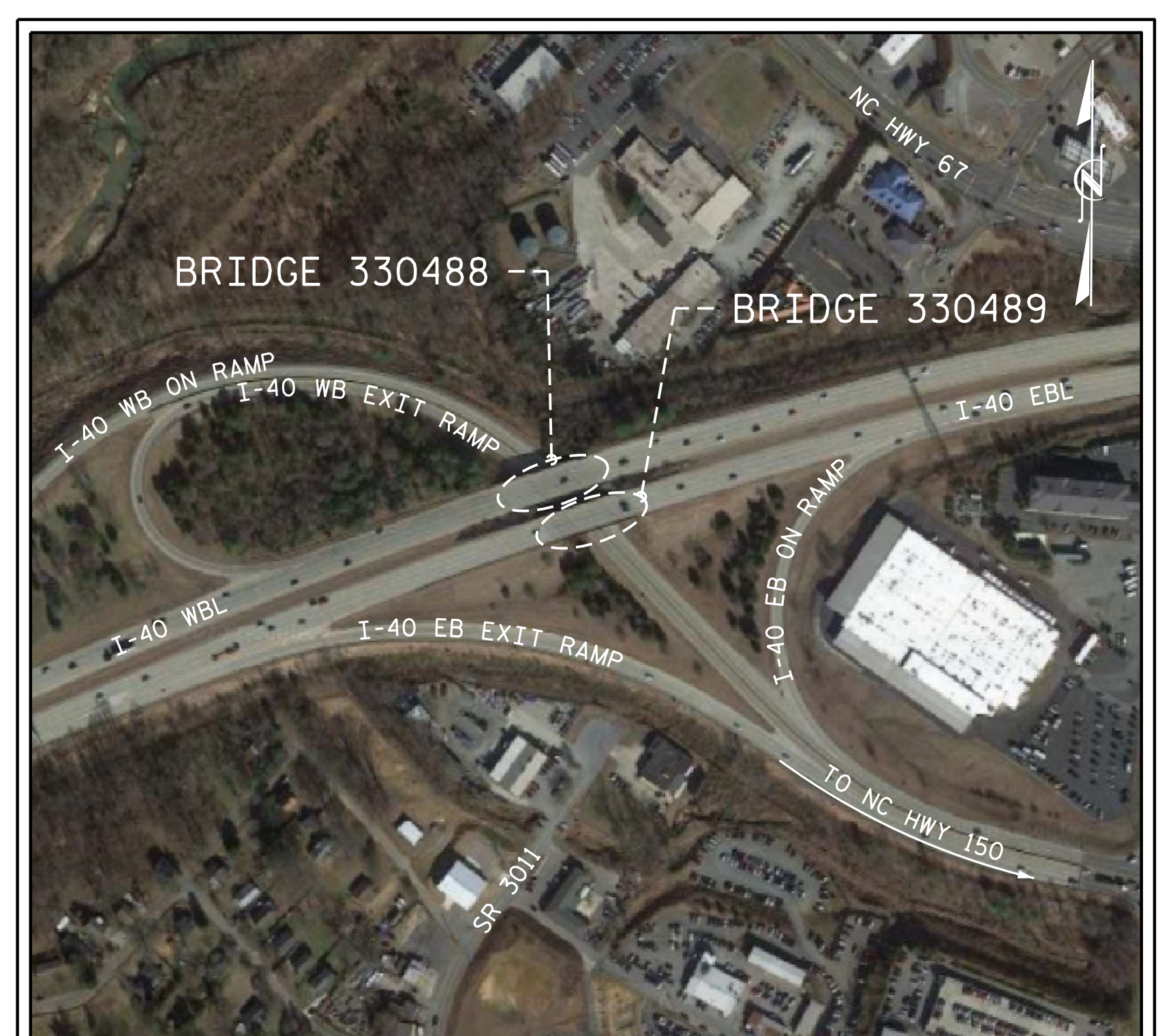
BRIDGES 330479 & 330480 LOCATION SKETCH



BRIDGES 330481 & 330482 LOCATION SKETCH



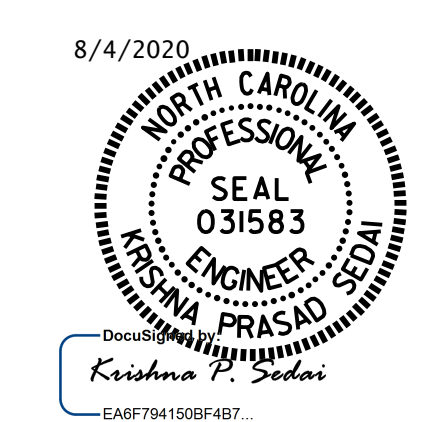
BRIDGES 330486 & 330487 LOCATION SKETCH



BRIDGES 330488 & 330489 LOCATION SKETCH

PROJECT NO. I-5795
FORSYTH COUNTY
 BRIDGE NO. 330479, 330480, 330481
330482, 330486, 330487
330488, 330489

SHEET 2 OF 6



STATE OF NORTH CAROLINA
 DEPARTMENT OF TRANSPORTATION
 RALEIGH

 LOCATION SKETCHES

DRAWN BY : R.L.PUTEK DATE : 06/2020
 CHECKED BY : K.P.SEDAII DATE : 06/2020

REVISIONS						SHEET NO.
NO.	BY:	DATE:	NO.	BY:	DATE:	S-2
1			3			TOTAL SHEETS
2			4			6

DOCUMENT NOT CONSIDERED FINAL UNLESS ALL SIGNATURES COMPLETED