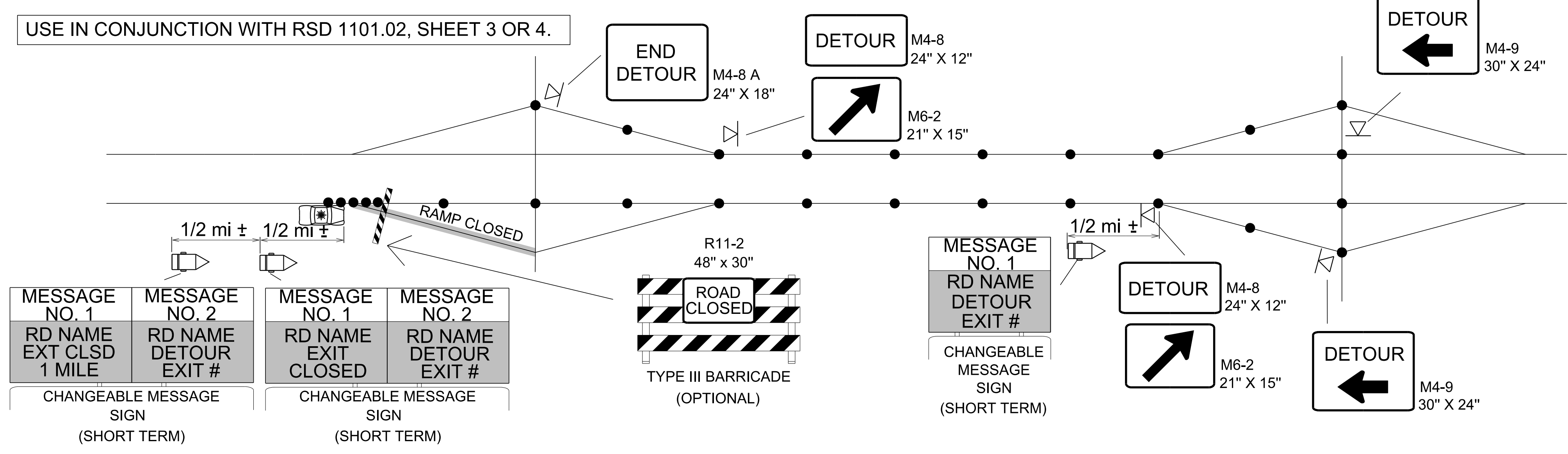
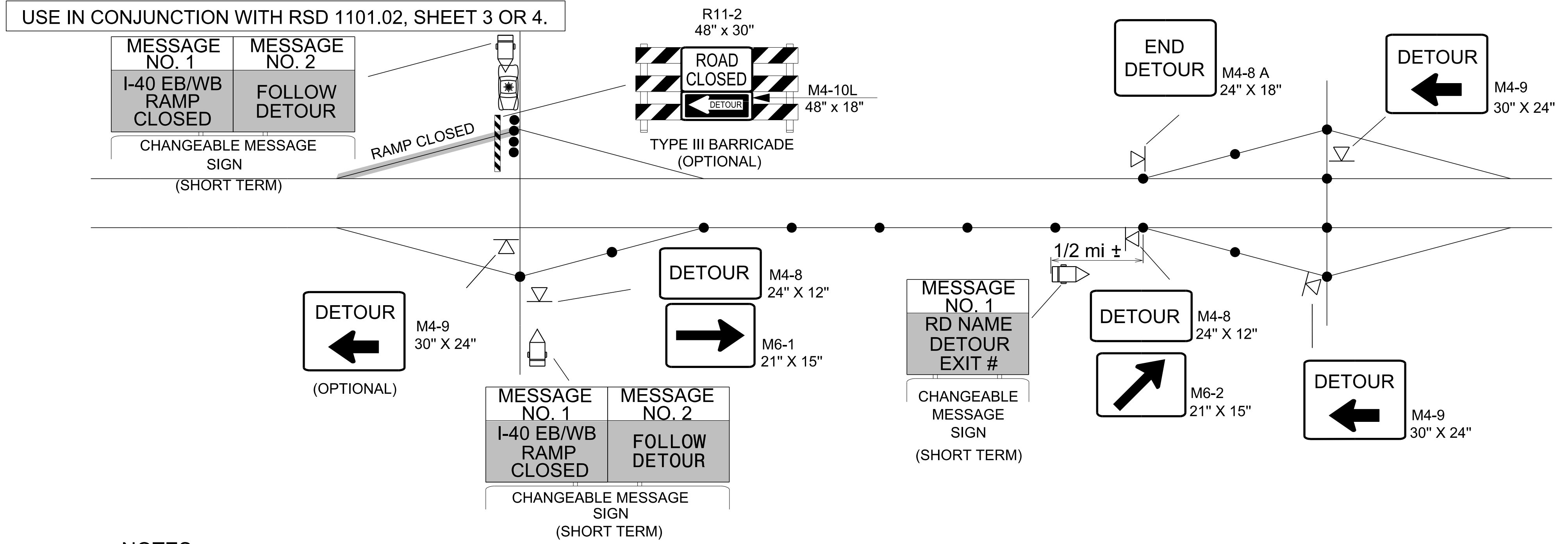


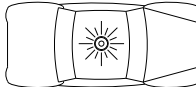
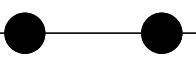


SHORT TERM CLOSURE AND DETOUR OF OFF-RAMP TO ADJACENT INTERCHANGE



SHORT TERM CLOSURE AND DETOUR OF ON-RAMP TO ADJACENT INTERCHANGE



-  TYPE III BARRICADE
-  DRUM
-  LAW ENFORCEMENT
-  DETOUR ROUTE

NOTES

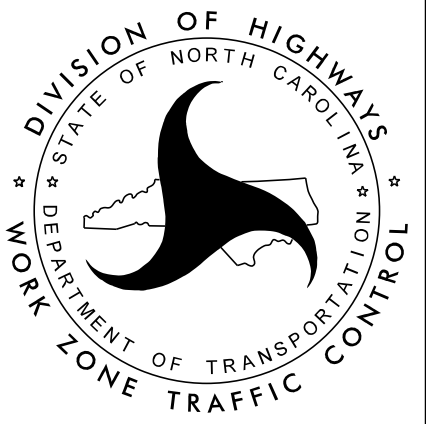
1. THIS DRAWING IS INTENDED FOR USE DURING SHORT TERM CLOSURES OF INTERSTATE AND FREEWAY RAMPS.
2. RAMP CLOSURES SHALL BE APPROVED BY THE ENGINEER.
3. IF RAMP CLOSURE RESTRICTIONS APPLY, SEE SPECIAL PROVISION, "INTERMEDIATE CONTRACT TIMES AND LIQUIDATED DAMAGES".

APPROVED: *Kenneth L. Thornwell, Jr., P.E.*

DATE: 7/24/2020

SEAL

DOCUMENT NOT CONSIDERED FINAL UNLESS ALL SIGNATURES COMPLETED

TYPICAL RAMP DETOUR

6/26/2020 \\dot\dfsroot\01\Prj\Store\Div\Proj\Division09\5795\Traffic\TrafficControl\TCP\I-5795_TC_TMP_2B_TypicalRampDetour.dgn User:tmkelyl