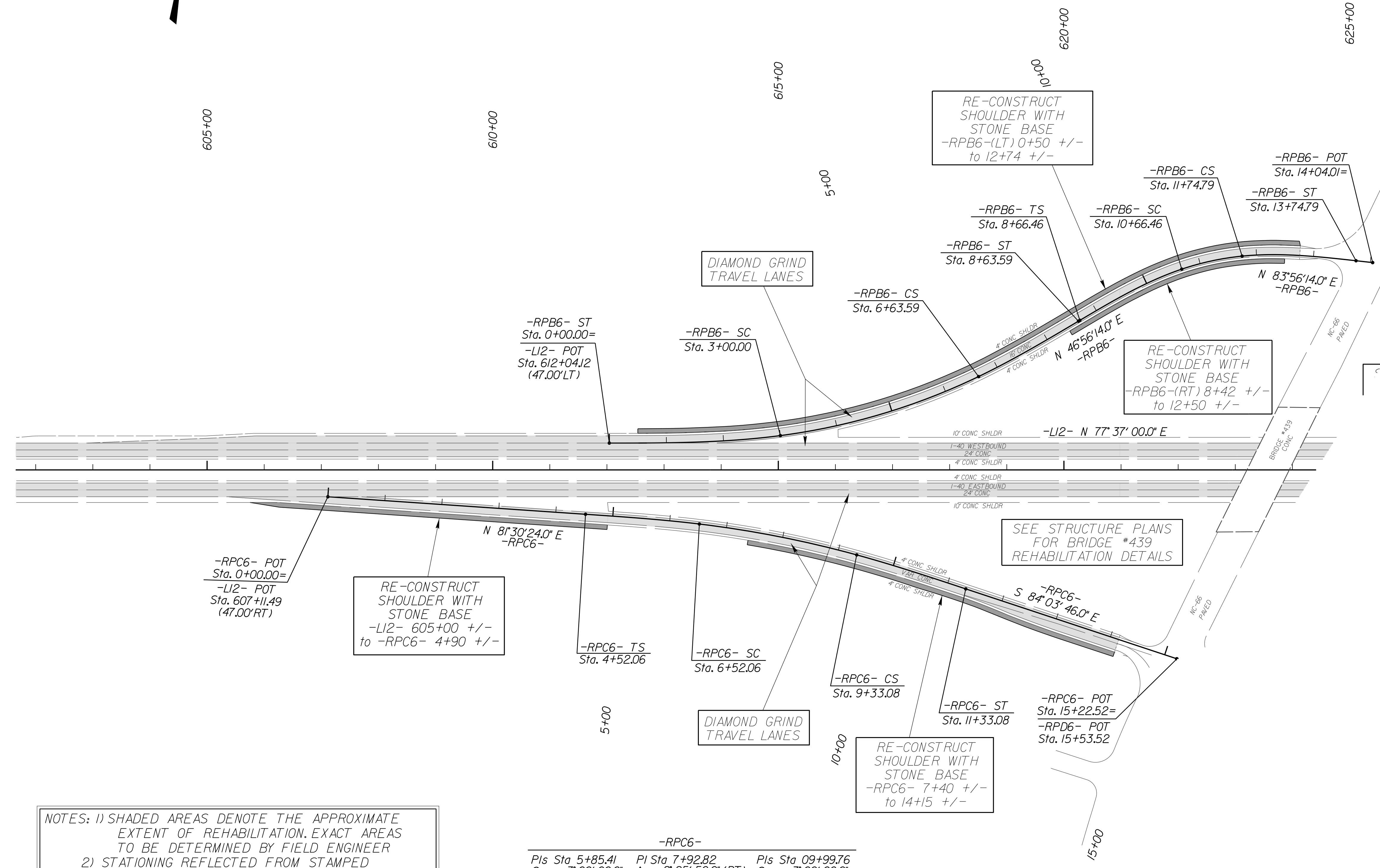


-RPB6-					
PIs Sta 2+00.18	PI Sta 4+83.34	PIs Sta 7+30.30	PIs Sta 10+00.10	PI Sta 11+20.86	PIs Sta 12+41.74
Es = 7° 30' 00.0"	Δ = 18° 10' 46.0" (LT)	Es = 5° 00' 00.0"	Es = 12° 00' 00.0"	Δ = 13° 00' 00.0" (RT)	Es = 12° 00' 00.0"
Ls = 300.00'	D = 5° 00' 00.0"	Ls = 200.00'	Ls = 200.00'	D = 12° 00' 00.0"	Ls = 200.00'
LT = 200.18'	L = 363.59'	LT = 133.39'	LT = 133.64'	L = 108.33'	LT = 133.64'
ST = 100.16'	T = 183.34'	ST = 66.72'	ST = 66.95'	T = 54.40'	ST = 66.95'
	R = 1,145.92'			R = 477.46'	



NOTES: 1) SHADED AREAS DENOTE THE APPROXIMATE EXTENT OF REHABILITATION. EXACT AREAS TO BE DETERMINED BY FIELD ENGINEER  
 2) STATIONING REFLECTED FROM STAMPED STATIONS & CONSTRUCTION PLANS DATED 1989 FOR PROJECT 1-900BC (PROJ. #81620422, 81621003)  
 3) FOLLOWING RE-SURFACING, THE CONTRACTOR SHALL INSTALL NEW THERMOPLASTIC PAVEMENT MARKINGS (SAME AS EXISTING) AND TIE INTO EXISTING PAVEMENT MARKINGS

-RPC6-		
PIs Sta 5+85.41	PI Sta 7+92.82	PIs Sta 09+99.76
Es = 3° 00' 00.0"	Δ = 8° 25' 50.0" (RT)	Es = 3° 00' 00.0"
Ls = 200.00'	D = 3° 00' 00.0"	Ls = 200.00'
LT = 133.35'	L = 281.02'	LT = 133.35'
ST = 66.68'	T = 140.76'	ST = 66.68'
	R = 1,909.86'	

REVISIONS

8/17/99  
 I:\AUG-2020-09-22-5:11\Projects\Development\TIP\_Projects\1-5795-40-Forsyth\Roadway\DesignFiles\1-5795-ddc\_psh9.dgn  
 8/11/2020 09:22  
 S:\Projects\Development\TIP\_Projects\1-5795-40-Forsyth\Roadway\DesignFiles\1-5795-ddc\_psh9.dgn