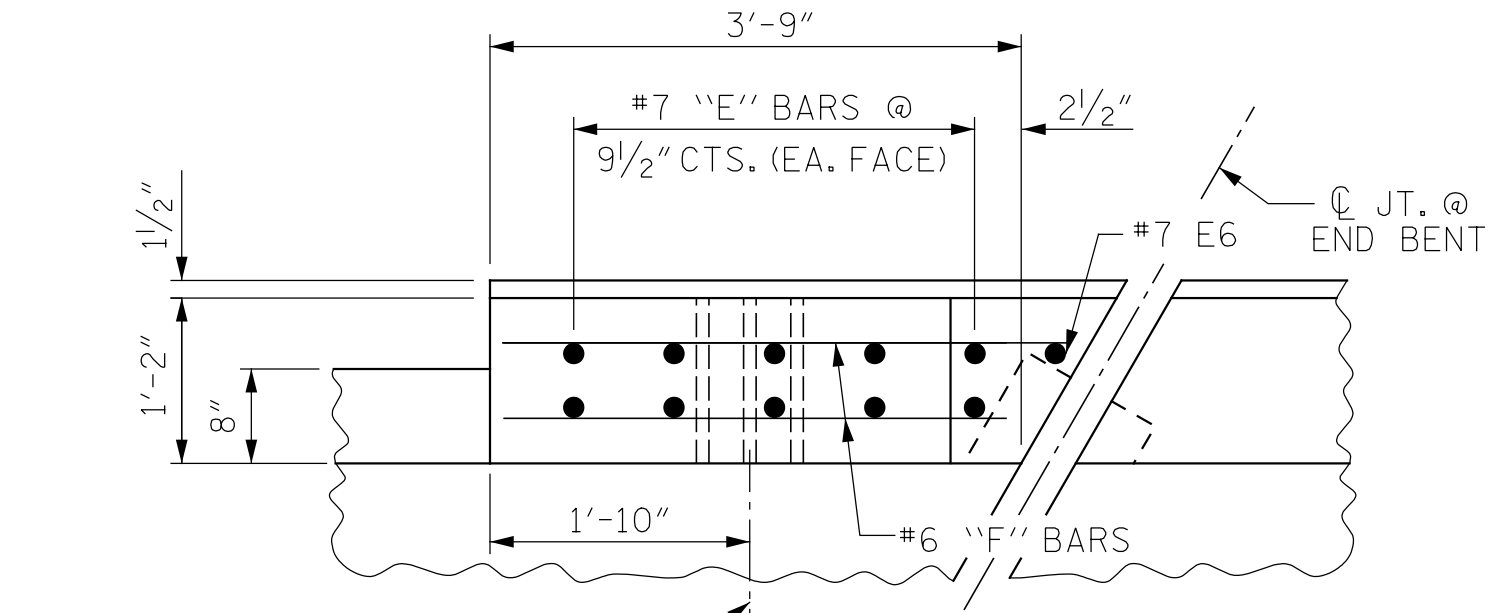


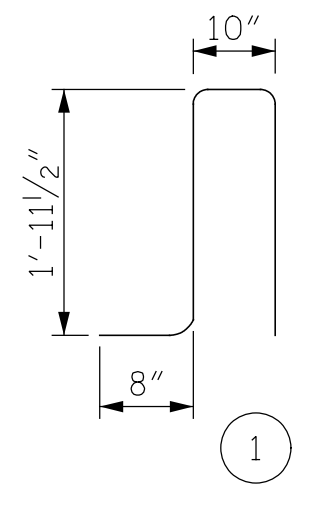
PLAN OF PARAPET



PLAN OF END POST

NOTES

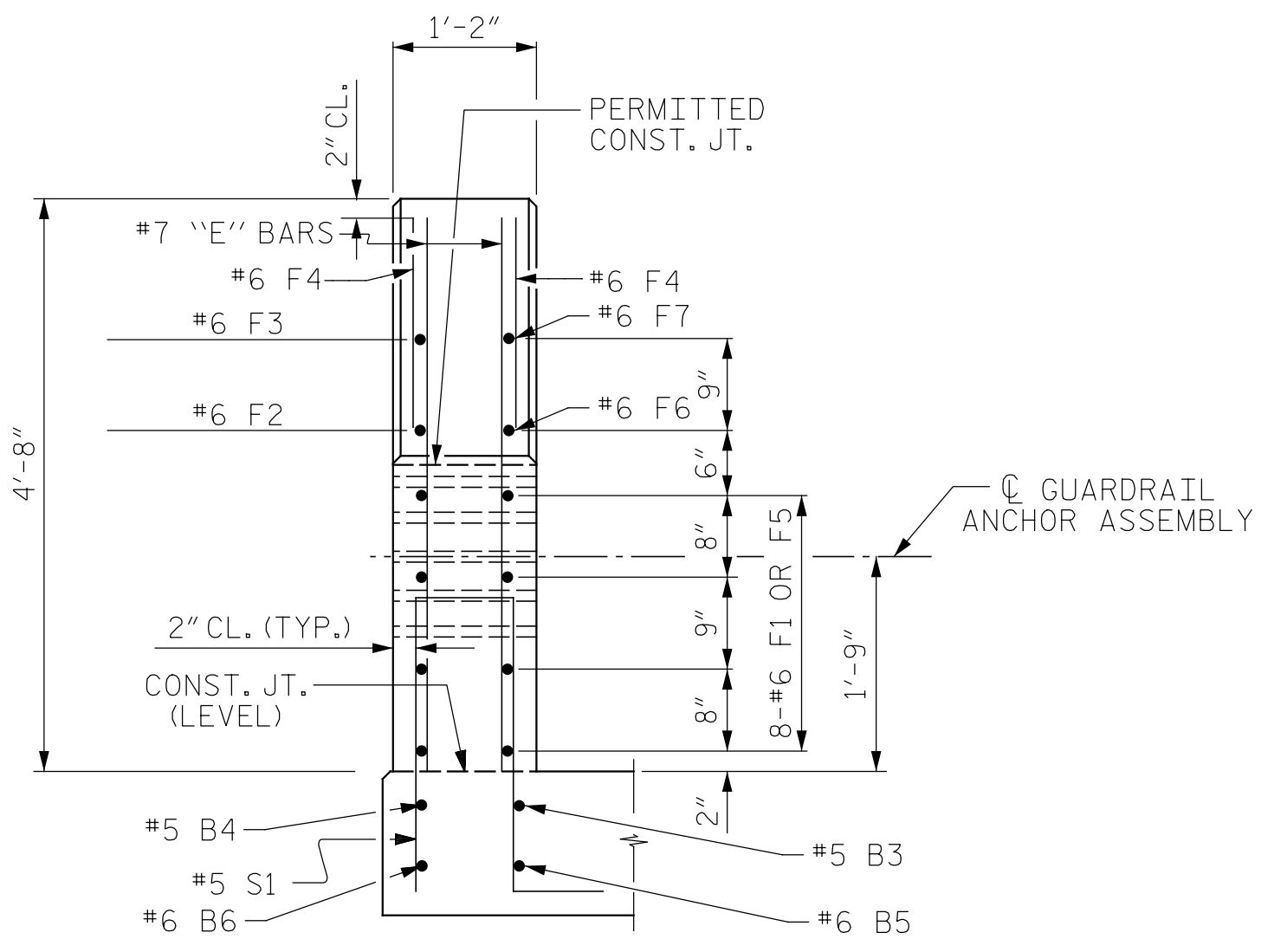
THE COST OF THE END POST ON THE APPROACH SLAB SHALL BE INCLUDED IN THE LINEAR FOOT CONTRACT PRICE BID FOR "1'-2\"/>



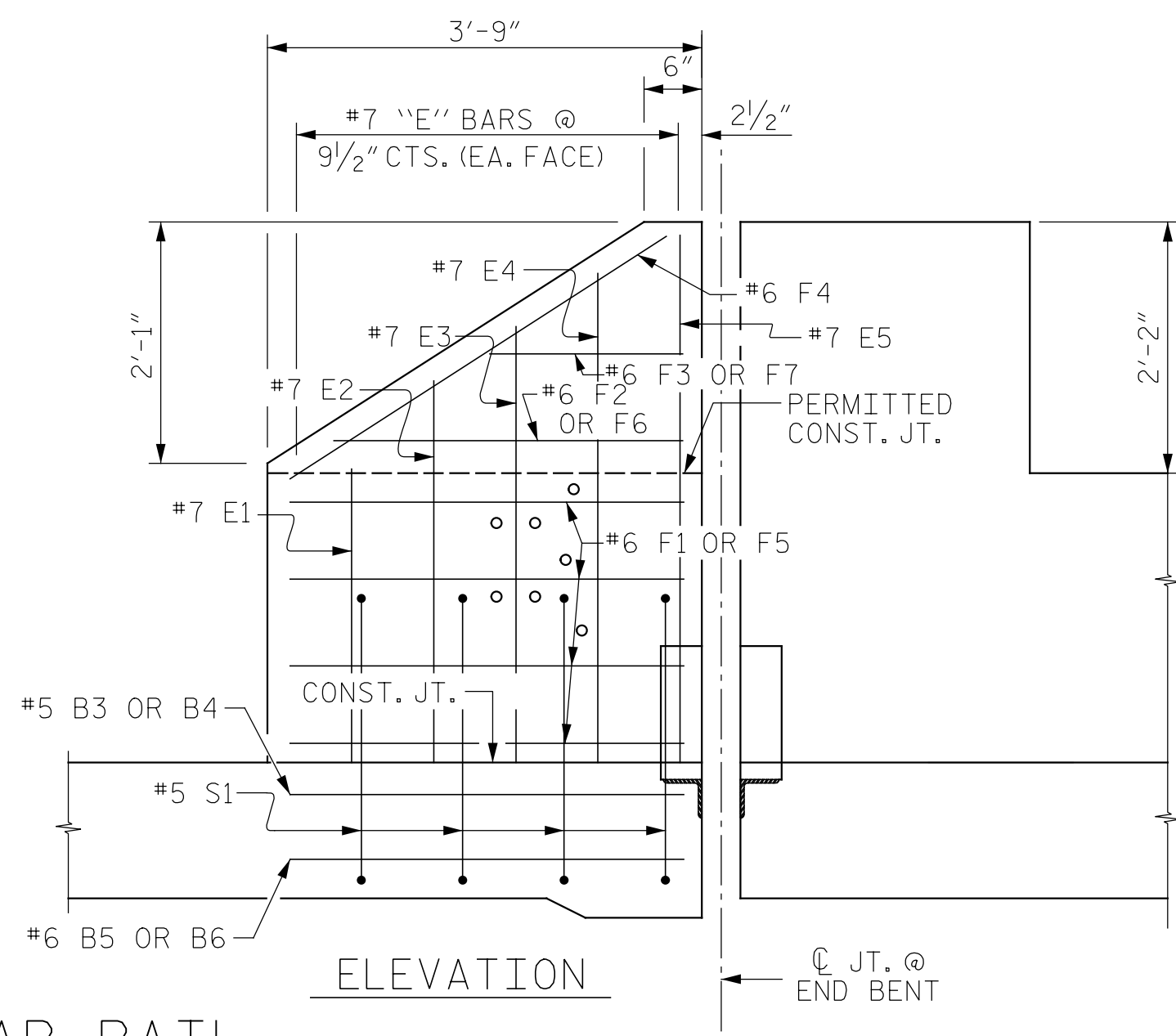
ALL BAR DIMENSIONS ARE OUT TO OUT

BILL OF MATERIAL FOR 4 END POSTS

BAR NO.	SIZE	TYPE	LENGTH	WEIGHT
*E1	8	7	STR 2'-6"	41
*E2	8	7	STR 3'-0"	49
*E3	8	7	STR 3'-6"	57
*E4	8	7	STR 4'-0"	65
*E5	8	7	STR 4'-4"	71
*E6	4	7	STR 4'-6"	37
*F1	16	6	STR 3'-5"	82
*F2	4	6	STR 3'-3"	20
*F3	4	6	STR 2'-0"	12
*F4	8	6	STR 3'-8"	44
*F5	16	6	STR 3'-8"	88
*F6	4	6	STR 3'-0"	18
*F7	4	6	STR 1'-9"	11
*S1	16	5	1 5'-5"	90
*EPOXY COATED REINFORCING STEEL				LBS. 685
CLASS "AA" CONCRETE				C.Y. 2.6
TOTAL LIN. FT. OF CONCRETE END POST				LIN. FT. 15.00

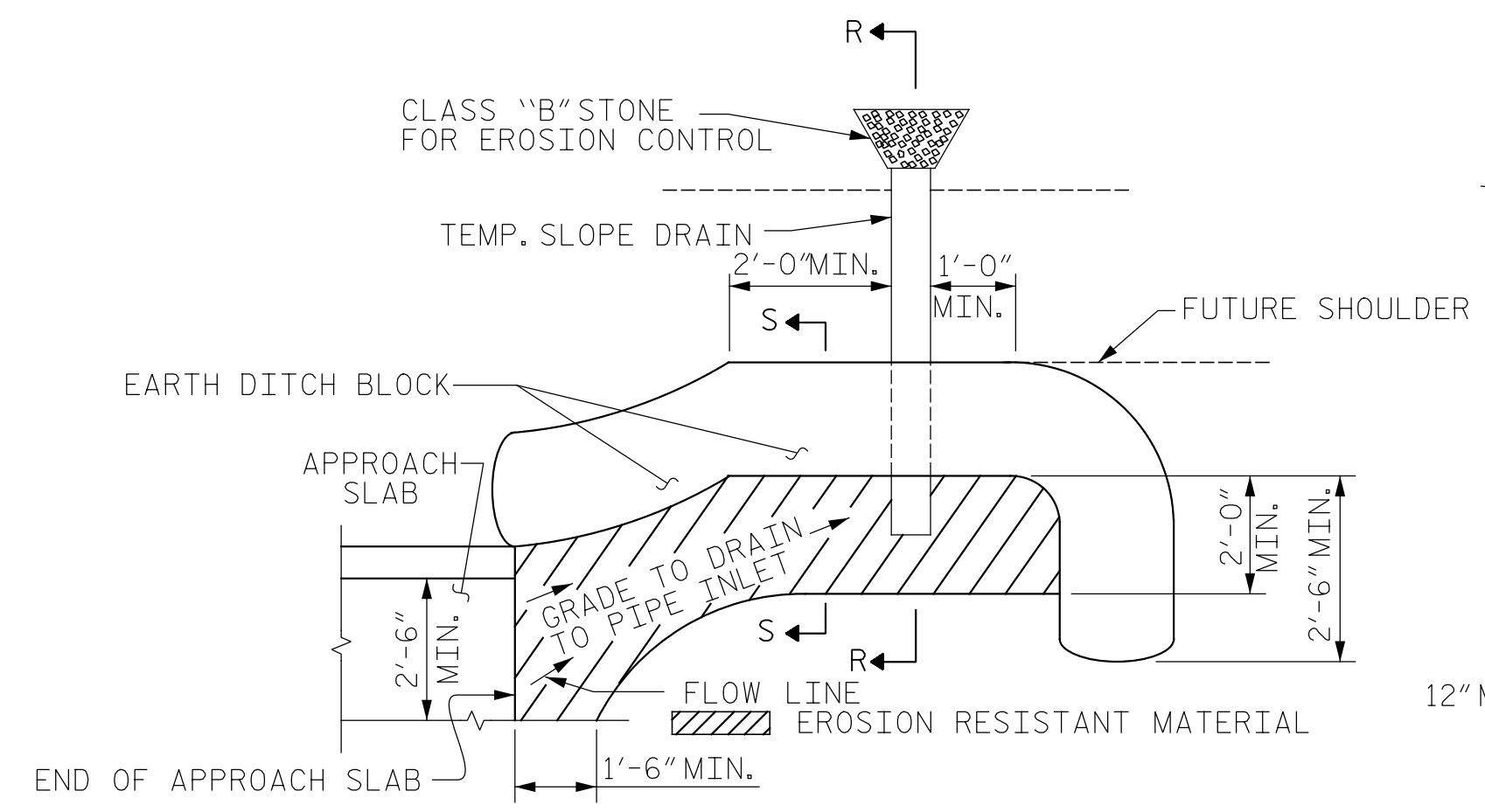


END VIEW

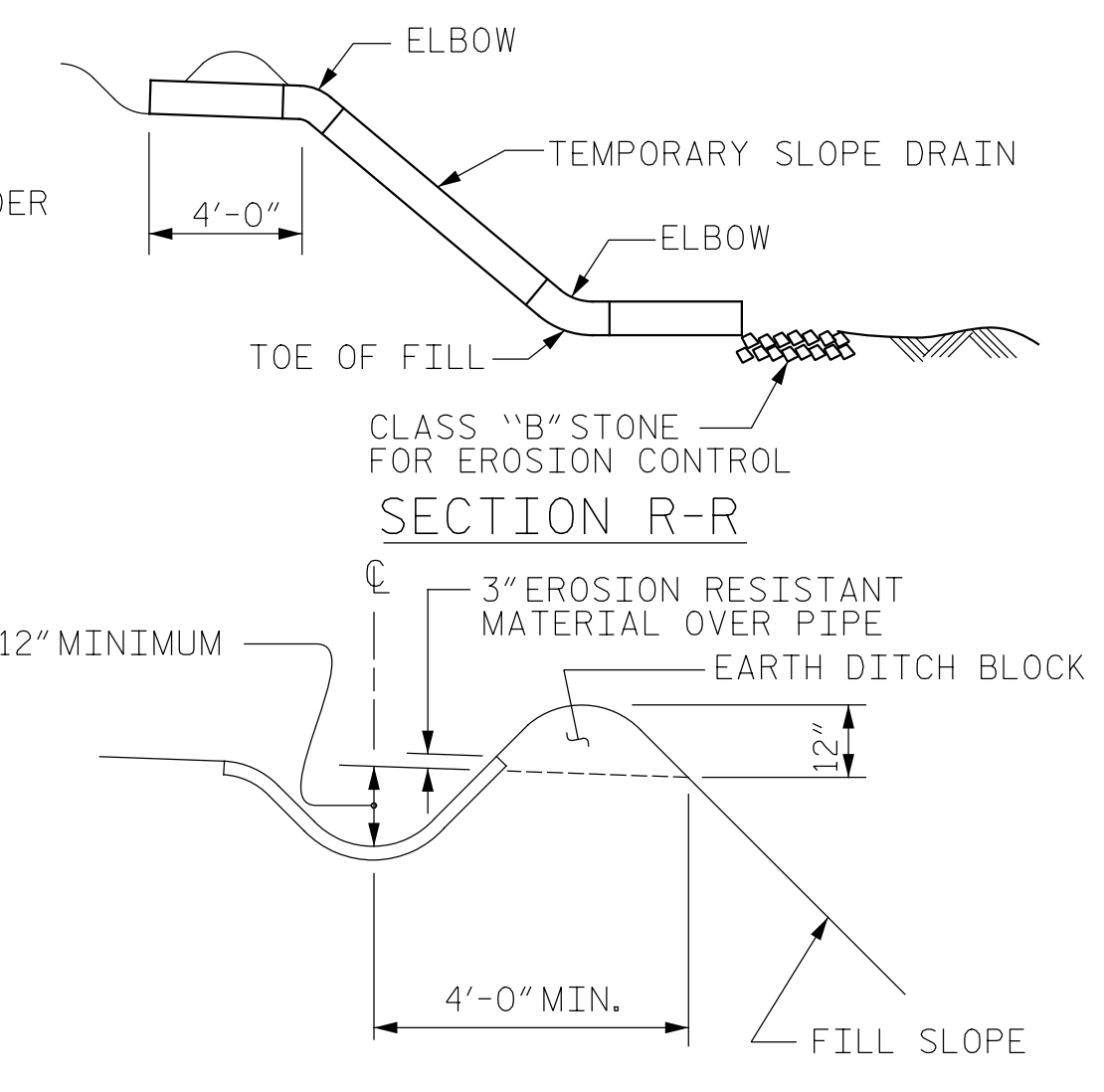


ELEVATION

END POST FOR TWO BAR RAIL



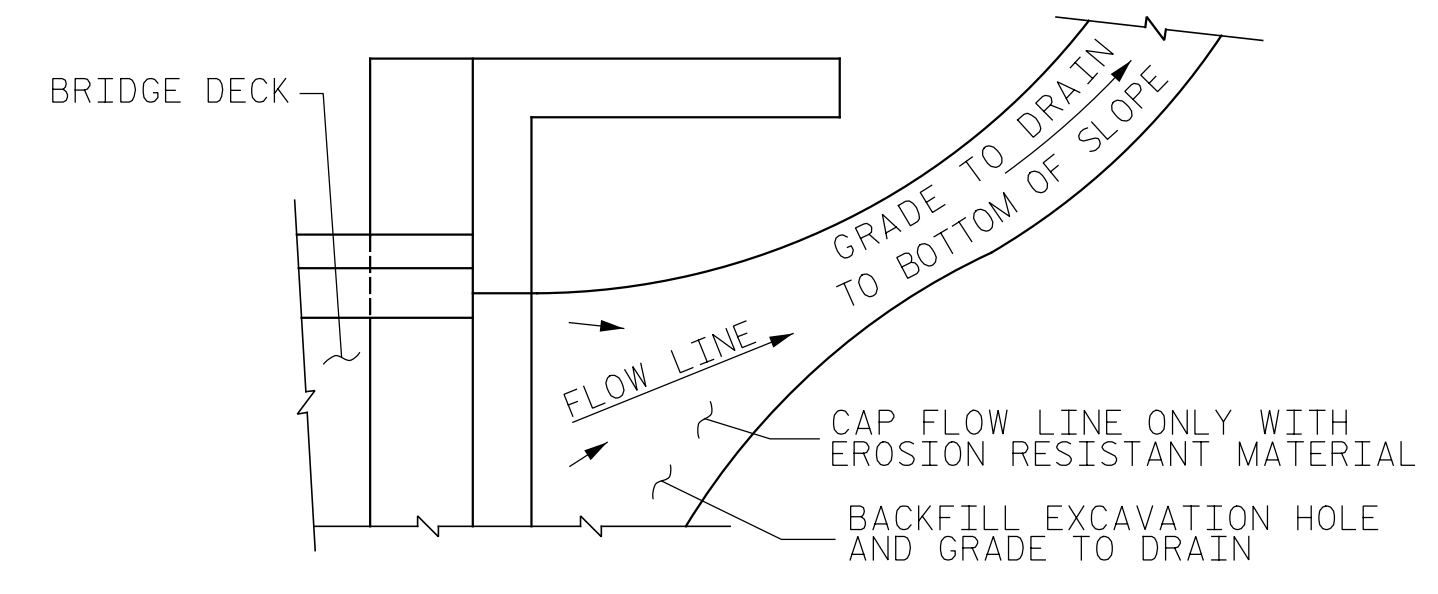
PLAN VIEW



SECTION S-S

TEMPORARY BERM AND SLOPE DRAIN DETAILS

(TO BE USED WHEN SHOULDER BERM GUTTER IS REQUIRED)



TEMPORARY DRAINAGE DETAIL

NOTE: IF THE APPROACH SLAB IS NOT CONSTRUCTED IMMEDIATELY AFTER THE BACKFILLING OF THE END BENT EXCAVATION, GRADE TO DRAIN TO THE BOTTOM OF THE SLOPE AND PROVIDE EROSION RESISTANT MATERIAL, SUCH AS FIBERGLASS ROVING OR AS DIRECTED BY THE ENGINEER TO PREVENT SOIL EROSION AND TO PROTECT THE AREA ADJACENT TO THE STRUCTURE. THE CONTRACTOR WILL BE REQUIRED TO REMOVE THESE MATERIALS PRIOR TO CONSTRUCTION OF THE APPROACH SLAB.

PROJECT NO. 48793.3.1

BLADEN COUNTY

STATION: 118+81.78 -L-

SHEET 2 OF 3

STATE OF NORTH CAROLINA
DEPARTMENT OF TRANSPORTATION
RALEIGH

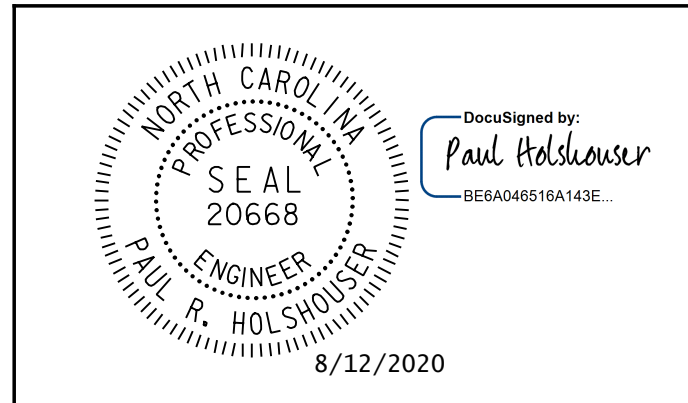
BRIDGE APPROACH SLAB DETAILS

REVISIONS

NO.	BY:	DATE:	NO.	BY:	DATE:
1			3		
2			4		

SHEET NO. S-103

TOTAL SHEETS 107



ICE of Carolinas, PLLC
4505 Falls of Neuse Road, Suite 110
Raleigh, North Carolina 27609
Phone: 803-822-0333
License #: P-0999

DOCUMENT NOT CONSIDERED FINAL UNLESS ALL SIGNATURES COMPLETED

Pen Table: \\192.168.64.12\icerd\RDUCAD\Plotting\Pen Tables\ICE_NC_S\Struct.tbl
Print Driver: \\192.168.64.12\icerd\RDUCAD\Plotting\NGD0T\22x34_PDF_ICE.pltcfgr
User: jmaustin
File: R:\Projects\19-77 Division 6 On Call\02 US 701 over Cape Fear River\NCDOT\Structures\Drawings\Final\401.103.US_701_SML_AS_02.dgn
Plot Date: 8/11/2020 10:10:56 PM

DRAWN BY: J. N. AUSTIN DATE: 6/10/20
CHECKED BY: K. C. SAMUDRALA DATE: 7-14-20
DESIGN E.O.R.: P. R. HOLSHOUSER DATE: 7-23-20