

BAR	MIN. PROJ./MIN. SPLICE
#10 B1	6'-0"
#4 B4	2'-5"
#4 K2	2'-5"
#5 B2	3'-0"
#4 B6	2'-5"

PLAN
WING (W3) BRACE PILE NOT SHOWN FOR CLARITY.

NOTES:

STIRRUPS MAY BE SHIFTED AS NECESSARY TO CLEAR ANCHOR BOLTS.

FOR PILE SPLICE DETAILS, SEE SHEET 6 OF 6.

BACKWALL SHALL BE PLACED BEFORE APPLYING EPOXY PROTECTIVE COATING.

THE TOP SURFACE OF THE END BENT CAPS SHALL BE CURED IN ACCORDANCE WITH THE STANDARD SPECIFICATIONS, EXCEPT THE MEMBRANE CURING COMPOUND METHOD SHALL NOT BE USED.

THE TOP SURFACE OF THE CAP, EXCEPT THE BRIDGE SEAT BUILDUPS SHALL BE SLOPED TRANSVERSELY FROM THE FILL FACE TO THE FRONT FACE AT A RATE OF 2%.

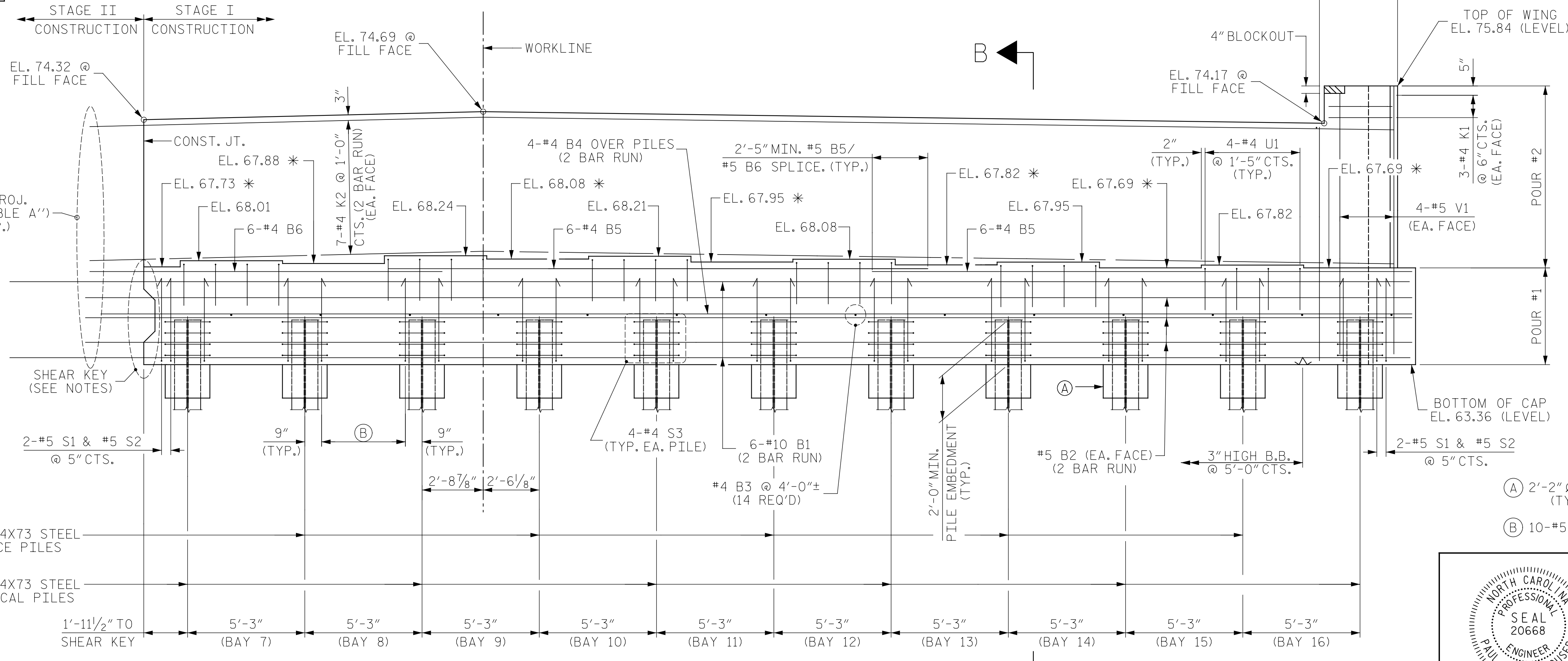
HATCHED AREA OF THE BACKWALL SHALL NOT BE POURED UNTIL THE CONCRETE PARAPET RAIL HAS BEEN CAST IF SLIP FORM CONSTRUCTION OF THE CONCRETE PARAPET IS USED.

FOR LOCATION OF ELEVATION BETWEEN BRIDGE SEATS, SEE "SECTION A-A" OR "SECTION B-B", SHEET 5 OF 6.

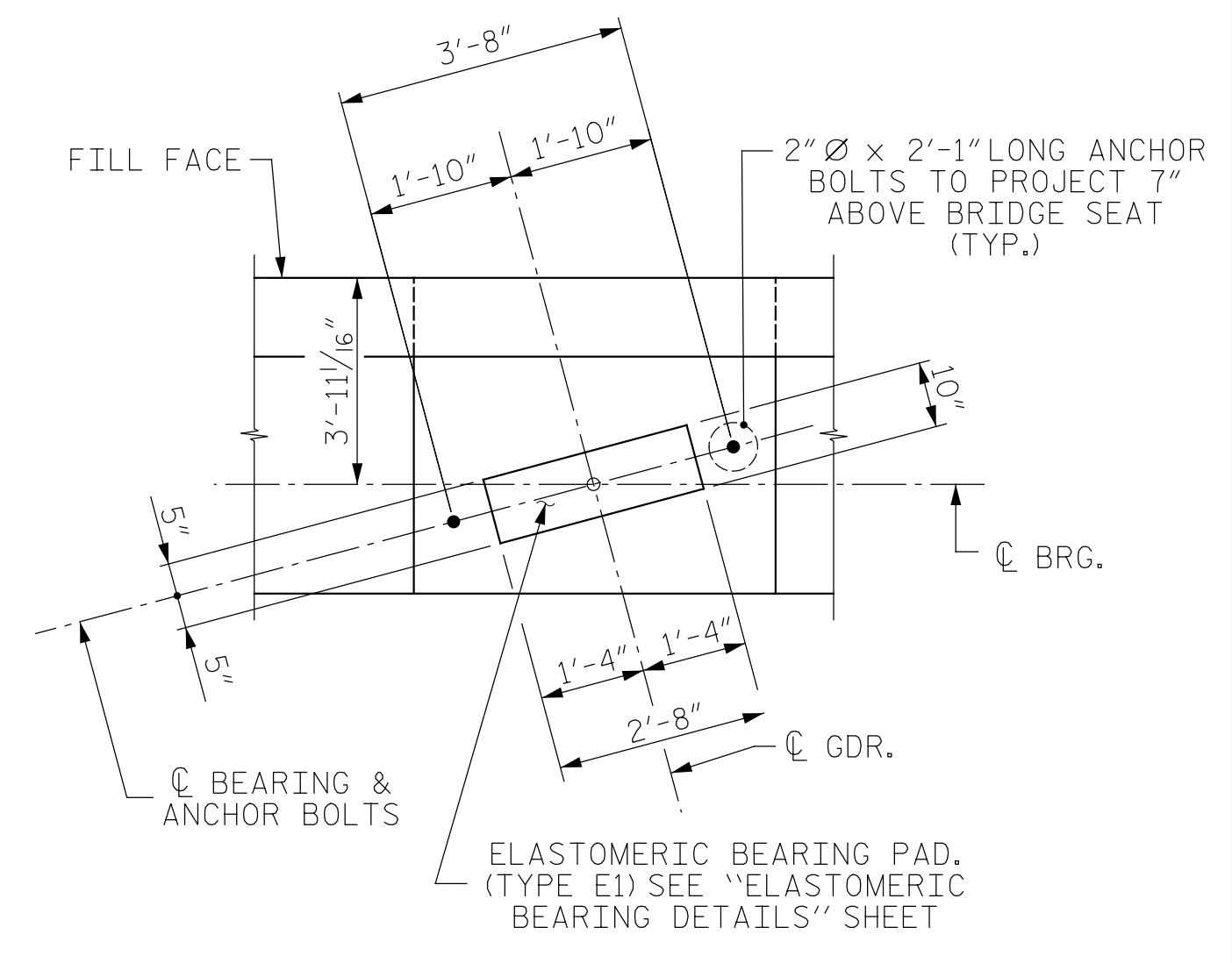
FOR SHEAR KEY DETAIL, SEE SHEET 2 OF 6.

FOR ADDITIONAL FOUNDATION NOTES, SEE "GENERAL DRAWING", SHEET 4 OF 7.

FOR WING (W3) DETAILS, SEE SHEET 3 OF 6.



ELEVATION
BAR SPLICES NOT SHOWN FOR CLARITY.

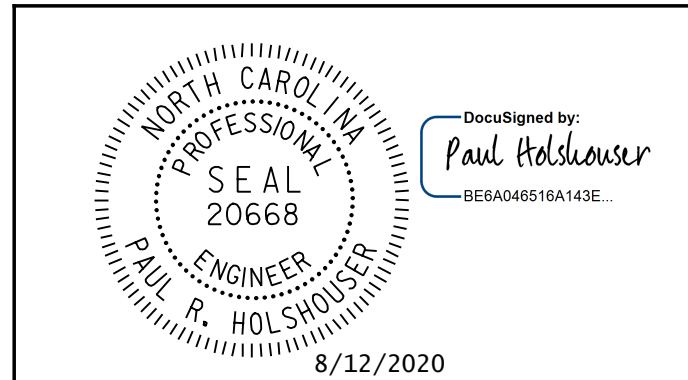


DETAIL A
ALL DIMENSIONS AND DETAILS SHOWN ARE TYPICAL FOR ALL BEARINGS @ EACH BRIDGE SEAT LOCATION.

PROJECT NO. 48793.3.1
BLADEN COUNTY
STATION: 118+81.78 -L-

SHEET 1 OF 6

STATE OF NORTH CAROLINA
DEPARTMENT OF TRANSPORTATION
RALEIGH
SUBSTRUCTURE
END BENT 2
STAGE I CONSTRUCTION



ICE of CAROLINAS, PLLC
4505 Falls of Neuse Road, Suite 110
Raleigh, North Carolina 27609
Phone: 919-822-0333
License # P-0999

REVISIONS		SHEET NO.	
NO.	BY:	DATE:	NO.
1			3
2			4

TOTAL SHEETS: 107

DRAWN BY: N. D'AIUTO DATE: 7-01-20
CHECKED BY: K. C. SAMUDRALA DATE: 7-09-20
DESIGN E.O.R.: P. R. HOLSHOUSER DATE: 7-23-20

DOCUMENT NOT CONSIDERED FINAL
UNLESS ALL SIGNATURES COMPLETED

Pen Table: \\192.168.64.12\icerd\RDUCAD\Plotting\Pen Tables\ICE.NC.Struct.tbl
 Print Driver: \\192.168.64.12\icerd\RDUCAD\Plotting\NGC\DOT\22x34_PDF_ICE.pltcfgr
 User: jim.austin
 File: R:\Projects\19-77 Division 6 On Call\02 US 701 over Cape Fear River\NC\DOT\Structures\Drawings\Final\401-094_US_701_SWL_EB2_01.dgn
 Plot Date: 8/11/2020 10:10:26 PM