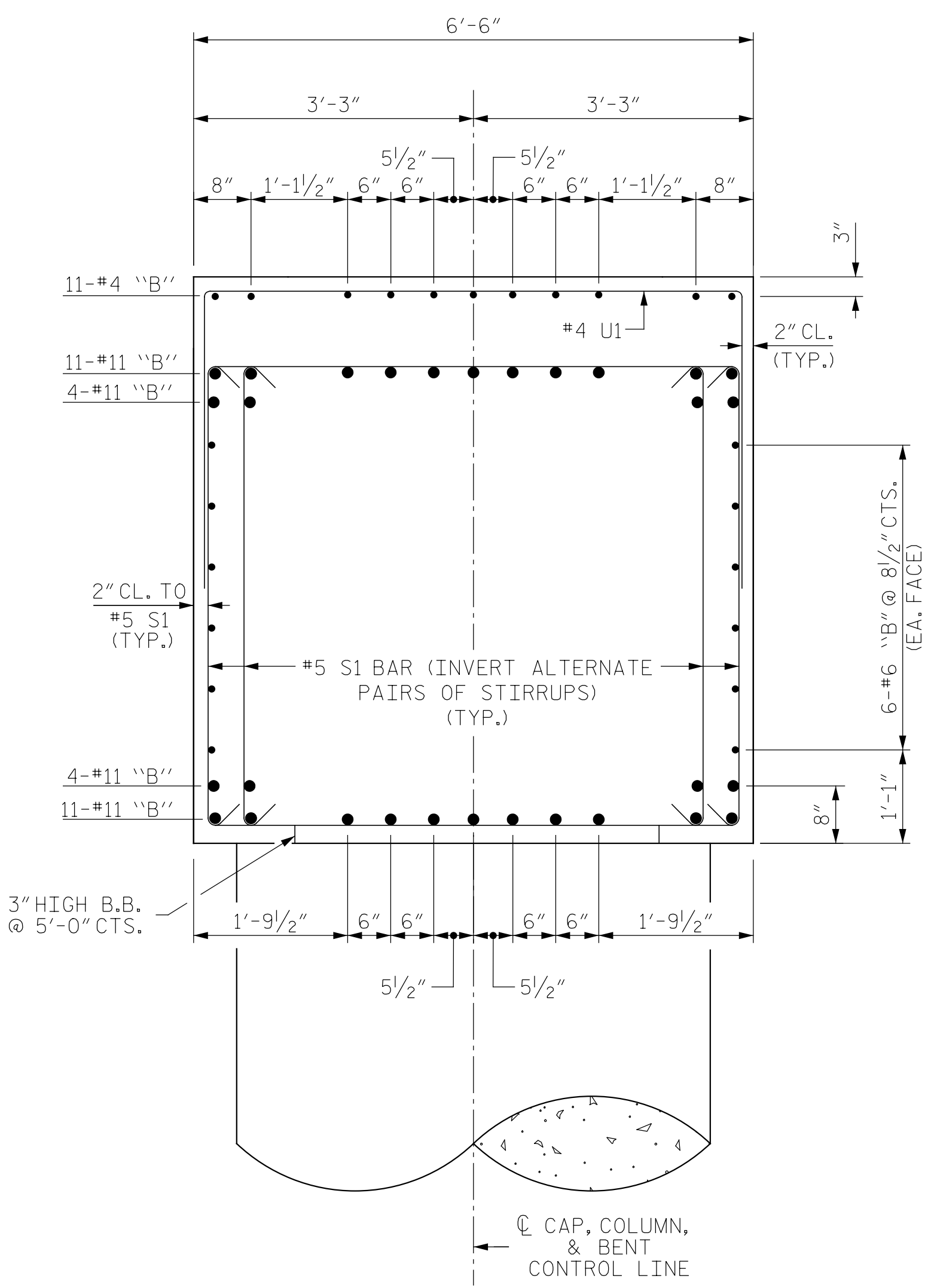
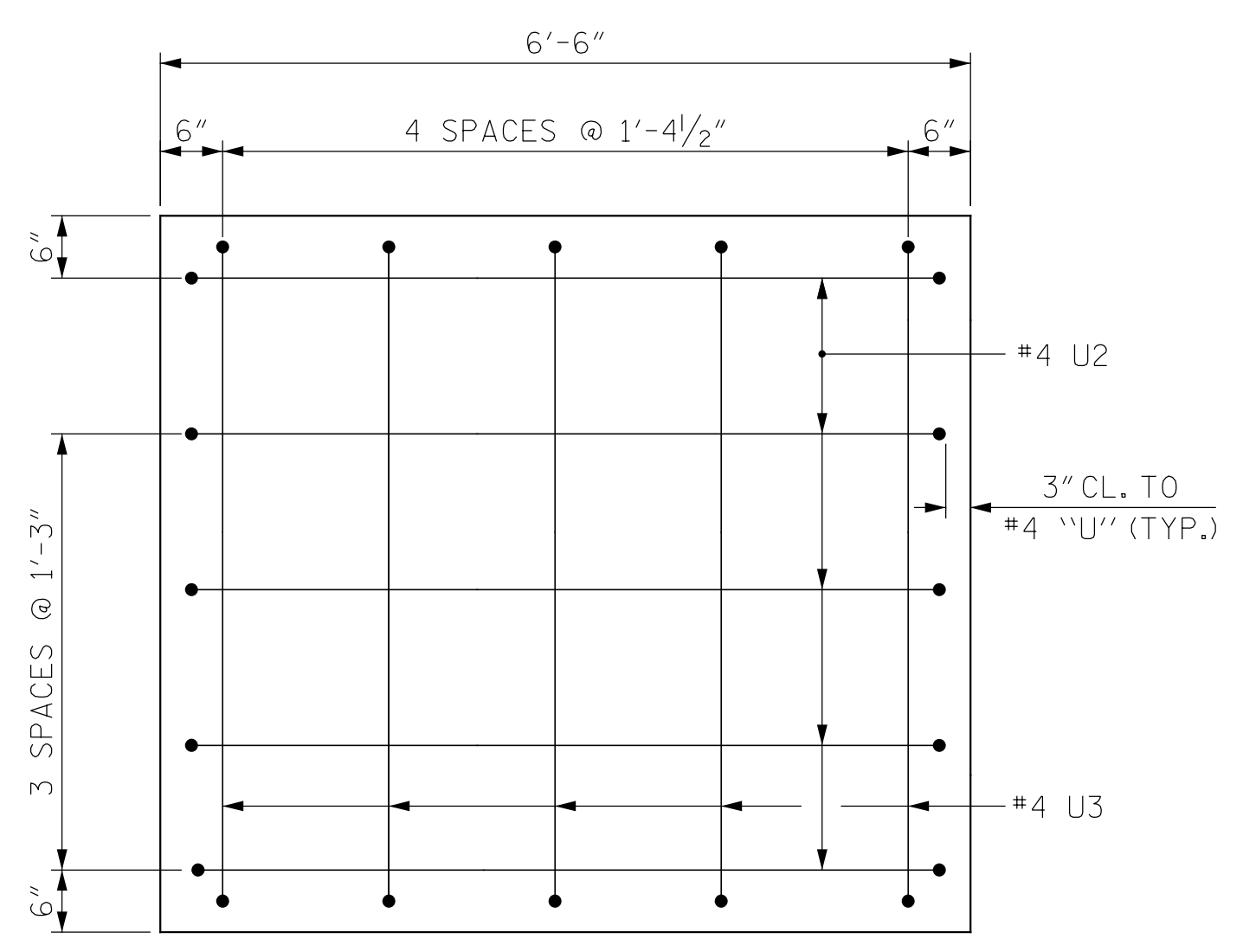


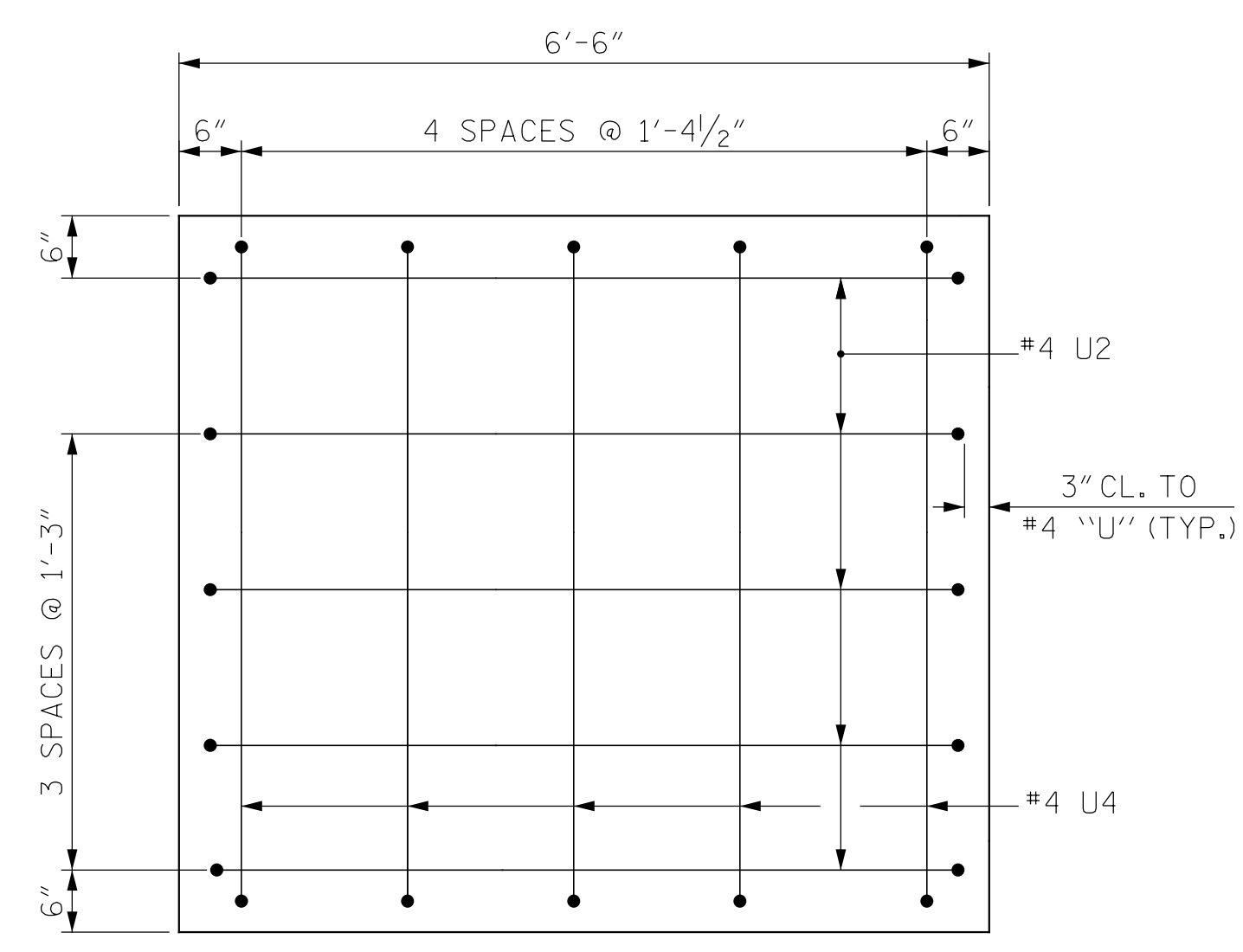
SECTION A-A



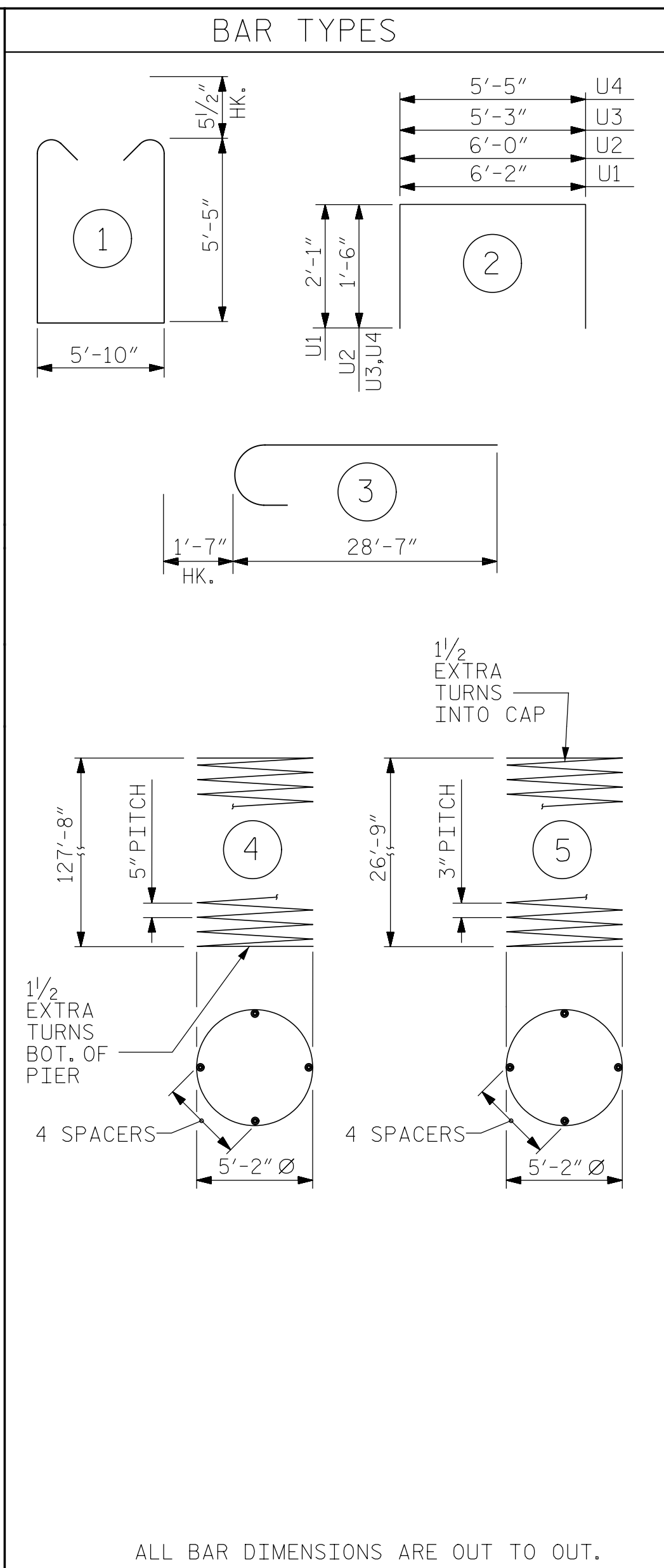
SECTION B-B  
(STEPS NOT SHOWN FOR CLARITY)



VIEW X-X  
(STAGE I CONSTRUCTION)



VIEW Y-Y  
(STAGE II CONSTRUCTION)



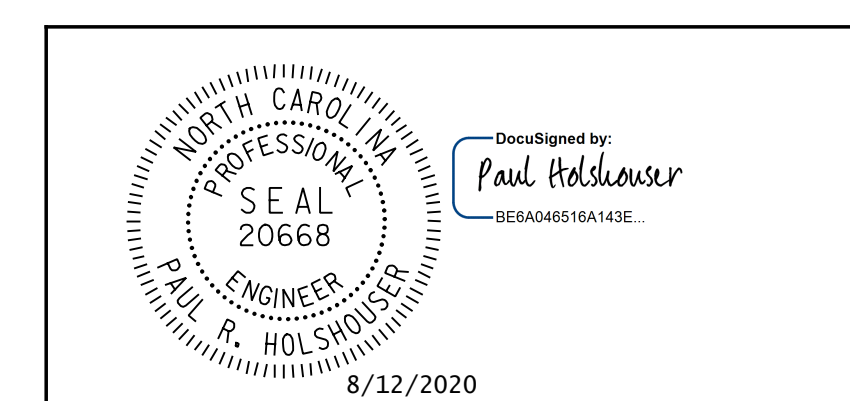
ALL BAR DIMENSIONS ARE OUT TO OUT.

BILL OF MATERIAL											
BENT 7 - STAGE I					BENT 7 - STAGE II						
BAR NO.	SIZE	TYPE	LENGTH	WEIGHT	BAR NO.	SIZE	TYPE	LENGTH	WEIGHT		
B1	30	11	STR	58' - 9"	9,364	B6	30	11	STR	22' - 5"	3,573
B2	12	6	STR	55' - 9"	1,005	B7	12	6	STR	22' - 6"	406
B3	11	4	STR	14' - 4"	105	B8	11	4	STR	13' - 10"	102
B4	22	4	STR	9' - 0"	132	S1	84	5	1	17' - 7"	1,541
B5	11	4	STR	11' - 6"	85	U1	35	4	2	10' - 4"	242
M1	336	11	STR	48' - 8"	86,878	U2	5	4	2	9' - 0"	30
S1	172	5	1	17' - 7"	3,154	U4	5	4	2	8' - 3"	28
U1	74	4	2	10' - 4"	511	REINFORCING STEEL				LBS.	5,922
U2	5	4	2	9' - 0"	30	CLASS "A" CONCRETE BREAKDOWN					
U3	5	4	2	8' - 5"	28	V1	112	11	3	30' - 2"	17,951
* SP-1	4	5	4	4945' - 7"	20,633	POUR #3 - CAP				C.Y.	32.6
** SP-2	4	4	5	1745' - 5"	4,664	TOTAL CLASS "A" CONCRETE				C.Y.	32.6
REINFORCING STEEL				LBS.	119,243	SPIRAL COLUMN REINFORCING STEEL				LBS.	25,297
CLASS "A" CONCRETE BREAKDOWN						POUR #2 - COLUMNS				C.Y.	93.3
POUR #3 - CAP				C.Y.	79.1	TOTAL CLASS "A" CONCRETE				C.Y.	172.4
DRILLED PIERS						POUR #1 - DRILLED PIERS				C.Y.	536.9
6'-0" Ø DRILLED PIERS LIN. FT.				512.7	PERMANENT STEEL CASING FOR 6'-0" Ø DRILLED PIERS				LIN. FT.	157.5	
SID INSPECTIONS				EA.	2	CSL TUBES				LIN. FT.	3148.1
CSL TESTING				EA.	4						

NOTES:

- \* THE SP-1 SPIRAL REINFORCING STEEL SHALL BE W31 OR D31 COLD DRAWN WIRE OR #5 PLAIN OR DEFORMED BAR.
- \*\* THE SP-2 SPIRAL REINFORCING STEEL SHALL BE W20 OR D20 COLD DRAWN WIRE OR #4 PLAIN OR DEFORMED BAR.
- THE CONTRACTOR'S ATTENTION IS CALLED TO THE FACT THAT THE LONGITUDINAL REINFORCEMENT FOR THE DRILLED PIERS IS DETAILED WITH 3 FEET OF EXTRA LENGTH.
- ALL STEEL IN THE DRILLED PIERS IS INCLUDED IN THE PAY ITEMS FOR "REINFORCING STEEL" AND "SPIRAL COLUMN REINFORCING STEEL."
- STIRRUPS IN CAP MAY BE SHIFTED AS NECESSARY TO CLEAR ANCHOR BOLTS.
- HOOKS ON "V" BARS MAY BE TURNED AS NECESSARY FOR PLACING REINFORCING STEEL.
- THE LOCATION OF THE CONSTRUCTION JOINT IN THE DRILLED PIERS IS BASED ON AN APPROXIMATE GROUND LINE ELEVATION. IF THE CONSTRUCTION JOINT IS ABOVE THE ACTUAL GROUND ELEVATION, THE CONTRACTOR SHALL PLACE THE CONSTRUCTION JOINT 1 FT. BELOW THE GROUND LINE.
- FOR ADDITIONAL FOUNDATION NOTES, SEE "GENERAL DRAWING," SHEET 4 OF 7.
- THE CONTRACTOR HAS THE OPTION TO POUR THE ENTIRE CAP IN STAGE I. NO PARTIAL DEMOLITION OF THE EXISTING BRIDGE 080017 WILL BE ALLOWED.

PROJECT NO. 48793.3.1  
BLADEN COUNTY  
 STATION: 118+81.78 -L-  
 SHEET 3 OF 3



REVISIONS						SHEET NO.
NO.	BY:	DATE:	NO.	BY:	DATE:	S-93
1			3			TOTAL SHEETS
2			4			107

Pen Table: \\192.168.64.12\ncerd\VRUCAD\Plotting\Pen Tables\ICE.NC.Struct.tbl  
 Print Driver: \\192.168.64.12\ncerd\VRUCAD\Plotting\NGD0T\22x34\_PDF\_ICE.plt  
 User: jim.austin  
 File Name: R:\Projects\19-77 Division 6 On Call\02 US 701 over Cape Fear River\NCDDOT\Structures\Drawings\Final\401-093\_US\_701\_SWL.BT7\_03.dgn  
 Plot Head: 8/12/2020 8:36:58 AM

DRAWN BY: B. J. MANTEI DATE: 5-20-20  
 CHECKED BY: N. D'AIUTO DATE: 7-17-20  
 DESIGN E.O.R.: P. R. HOLSHOUSER DATE: 7-23-20

DOCUMENT NOT CONSIDERED FINAL  
 UNLESS ALL SIGNATURES COMPLETED

ICE of Carolinas, PLLC  
 4505 Falls of Neuse Road, Suite 110  
 Raleigh, North Carolina 27609  
 Phone: 919-822-0333  
 License #: P-0999