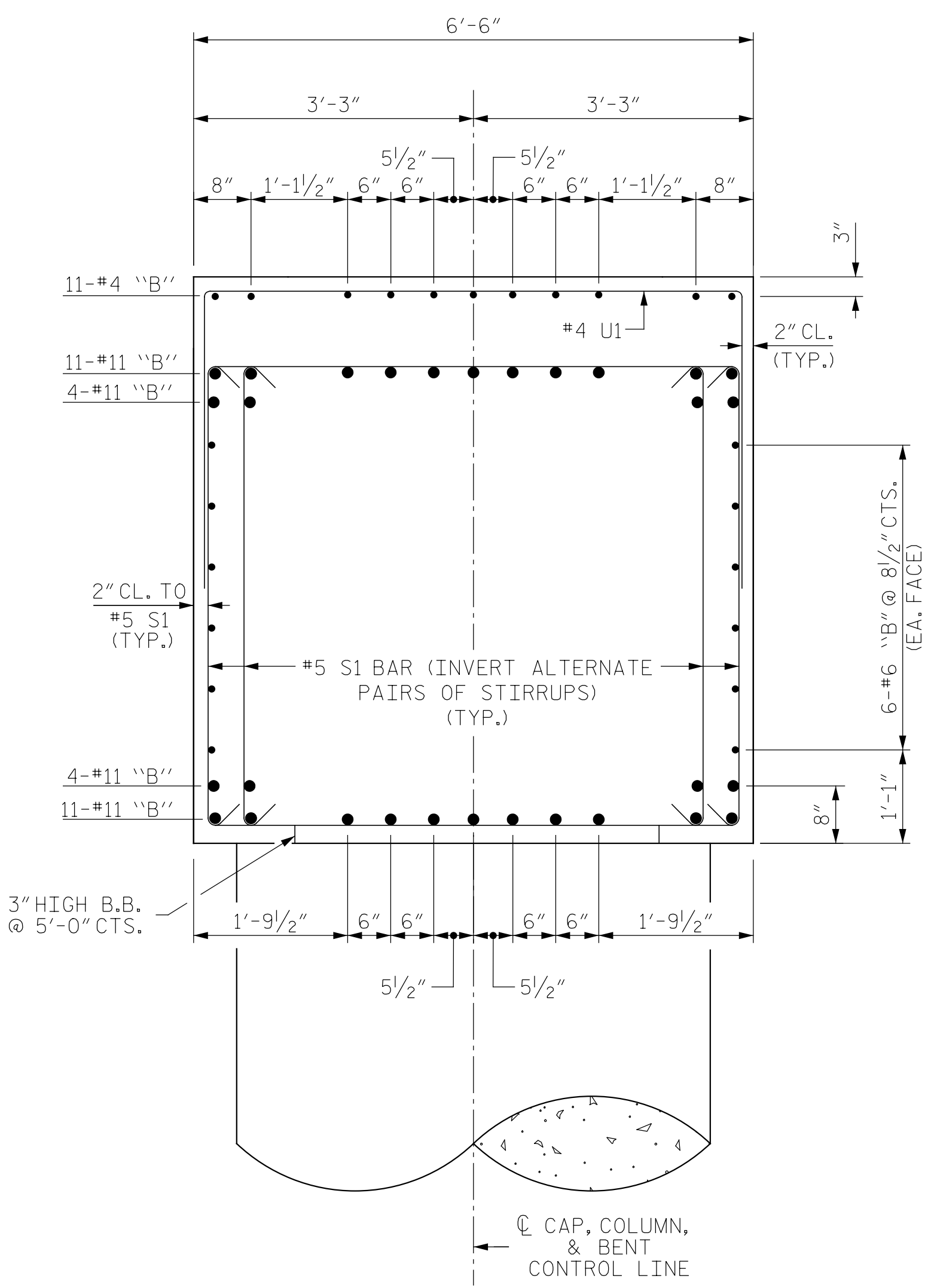
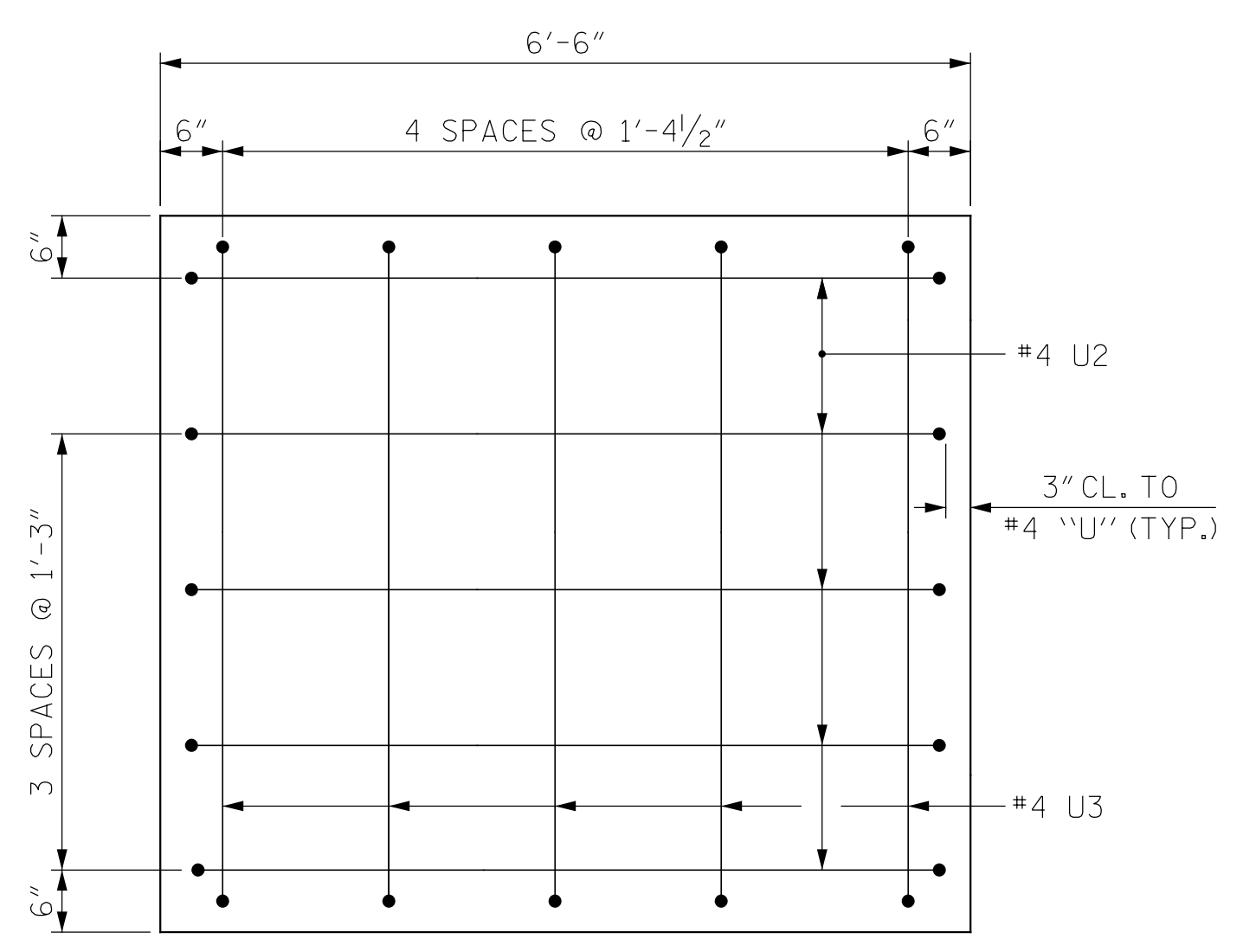


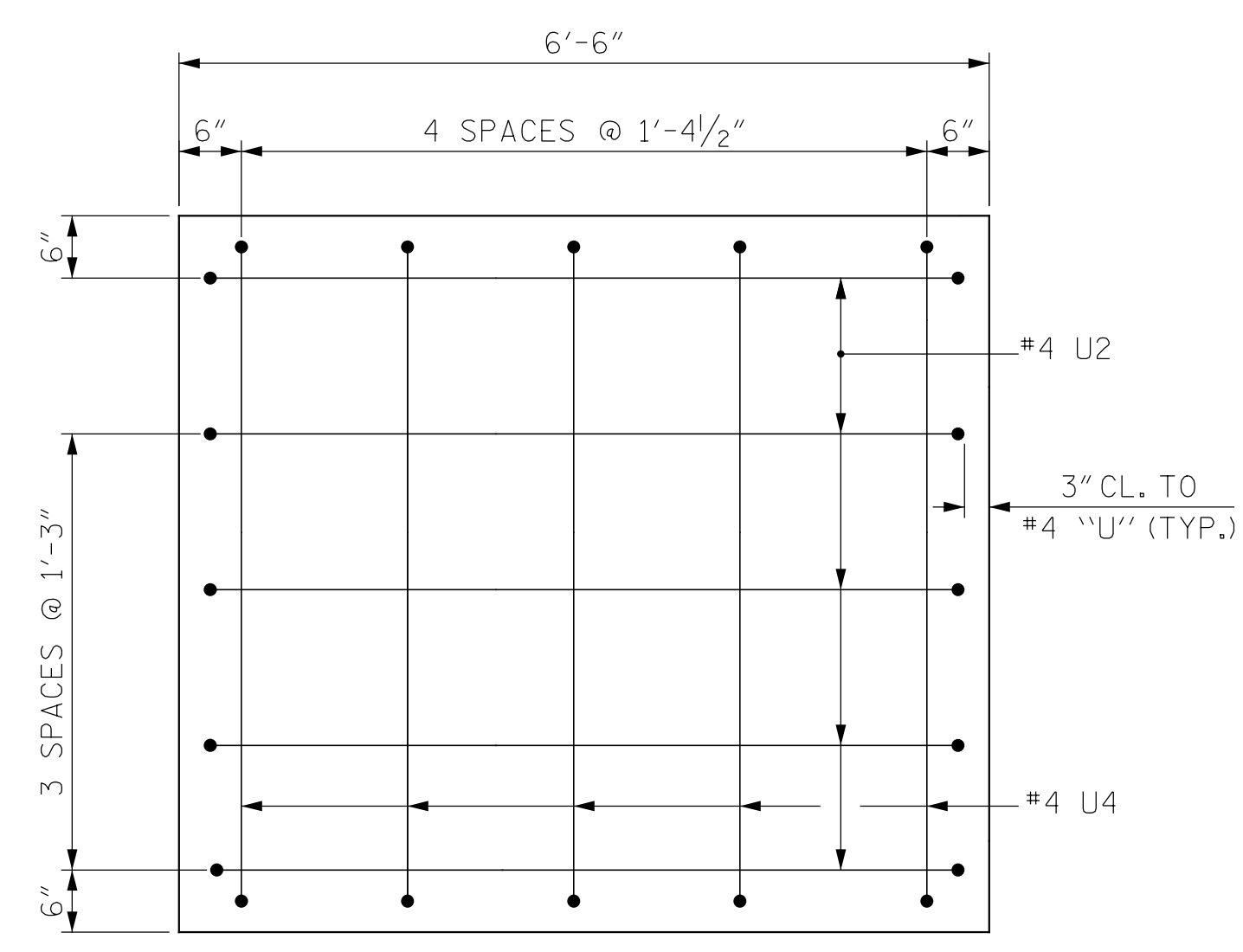
SECTION A-A



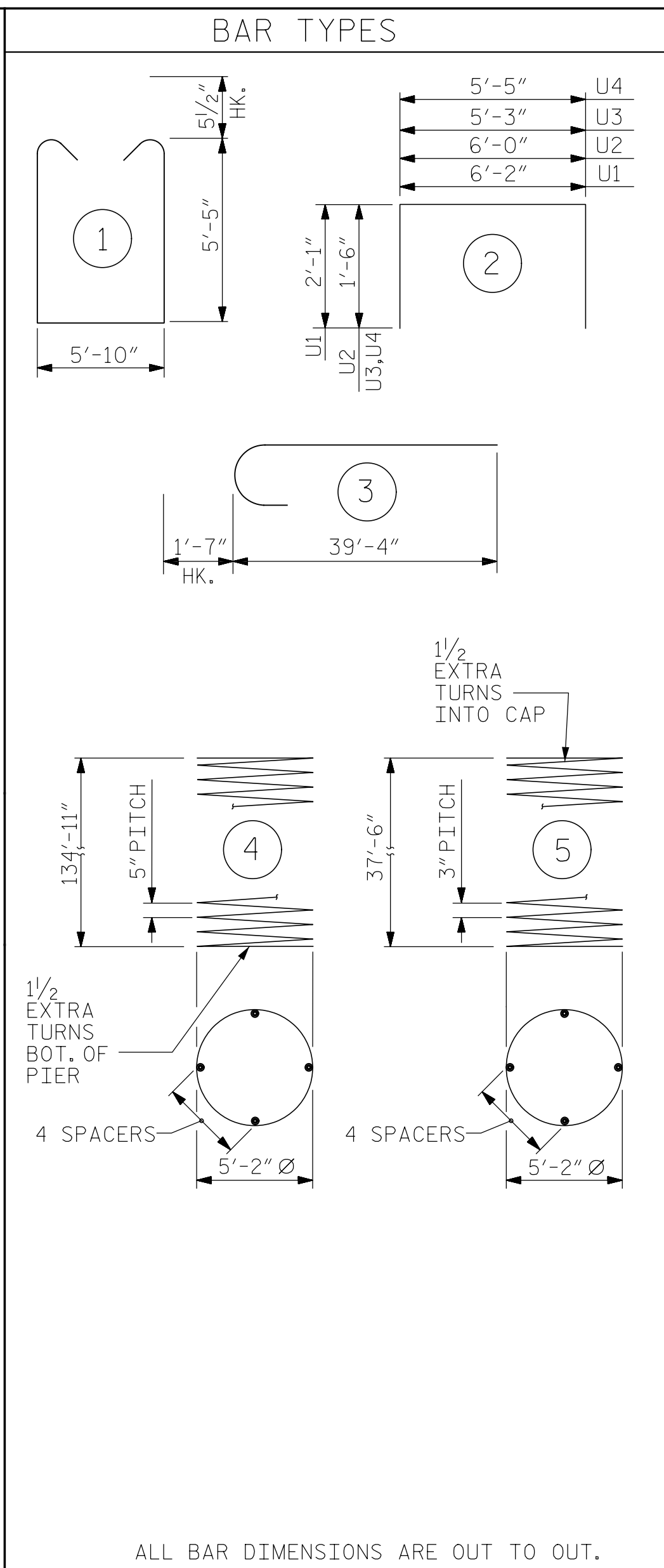
SECTION B-B
(STEPS NOT SHOWN FOR CLARITY)



VIEW X-X
(STAGE I CONSTRUCTION)



VIEW Y-Y
(STAGE II CONSTRUCTION)



ALL BAR DIMENSIONS ARE OUT TO OUT.

BILL OF MATERIAL												
BENT 6 - STAGE I					BENT 6 - STAGE II							
BAR NO.	SIZE	TYPE	LENGTH	WEIGHT	BAR NO.	SIZE	TYPE	LENGTH	WEIGHT			
B1	30	11	STR	58' - 9"	9,364	B6	30	11	STR	22' - 5"	3,573	
B2	12	6	STR	55' - 9"	1,005	B7	12	6	STR	22' - 6"	406	
B3	11	4	STR	14' - 4"	105	B8	11	4	STR	13' - 10"	102	
B4	22	4	STR	9' - 0"	132							
B5	11	4	STR	11' - 6"	85	S1	84	5	1	17' - 7"	1,541	
M1	336	11	STR	51' - 1"	91,192	U1	35	4	2	10' - 4"	242	
S1	172	5	1	17' - 7"	3,154	U2	5	4	2	9' - 0"	30	
U1	74	4	2	10' - 4"	511	U4	5	4	2	8' - 3"	28	
U2	5	4	2	9' - 0"	30	REINFORCING STEEL					LBS.	5,922
U3	5	4	2	8' - 5"	28	CLASS "A" CONCRETE BREAKDOWN						
V1	112	11	3	40' - 11"	24,348	POUR #3 - CAP					C.Y.	32.6
*SP-1	4	5	4	5222' - 7"	21,789	TOTAL CLASS "A" CONCRETE					C.Y.	32.6
**SP-2	4	4	5	2437' - 1"	6,512	REINFORCING STEEL					LBS.	129,954
					SPIRAL COLUMN REINFORCING STEEL					LBS.	28,301	
					CLASS "A" CONCRETE BREAKDOWN							
					POUR #2 - COLUMNS					C.Y.	131.1	
					POUR #3 - CAP					C.Y.	79.1	
					TOTAL CLASS "A" CONCRETE					C.Y.	210.2	
					DRILLED PIERS							
					POUR #1 - DRILLED PIERS					C.Y.	567.1	
					6'-0" Ø DRILLED PIERS LIN. FT.						541.6	
					PERMANENT STEEL CASING FOR 6'-0" Ø DRILLED PIERS					LIN. FT.	132.9	
					SID INSPECTIONS					EA.	2	
					CSL TUBES					LIN. FT.	3321.4	
					CSL TESTING					EA.	4	

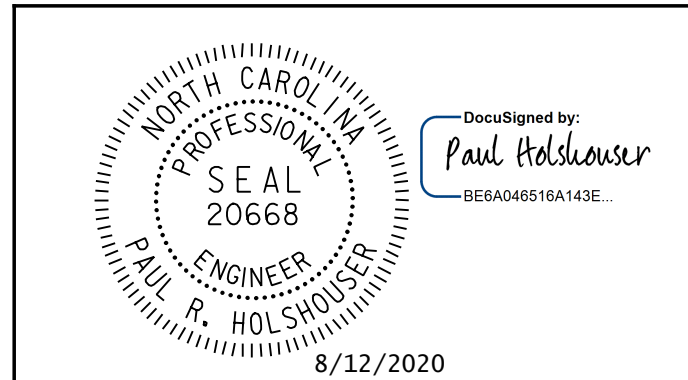
NOTES:

- * THE SP-1 SPIRAL REINFORCING STEEL SHALL BE W31 OR D31 COLD DRAWN WIRE OR #5 PLAIN OR DEFORMED BAR.
- ** THE SP-2 SPIRAL REINFORCING STEEL SHALL BE W20 OR D20 COLD DRAWN WIRE OR #4 PLAIN OR DEFORMED BAR.
- THE CONTRACTOR'S ATTENTION IS CALLED TO THE FACT THAT THE LONGITUDINAL REINFORCEMENT FOR THE DRILLED PIERS IS DETAILED WITH 3 FEET OF EXTRA LENGTH.
- ALL STEEL IN THE DRILLED PIERS IS INCLUDED IN THE PAY ITEMS FOR "REINFORCING STEEL" AND "SPIRAL COLUMN REINFORCING STEEL."
- STIRRUPS IN CAP MAY BE SHIFTED AS NECESSARY TO CLEAR ANCHOR BOLTS.
- HOOKS ON "V" BARS MAY BE TURNED AS NECESSARY FOR PLACING REINFORCING STEEL.
- THE LOCATION OF THE CONSTRUCTION JOINT IN THE DRILLED PIERS IS BASED ON AN APPROXIMATE GROUND LINE ELEVATION. IF THE CONSTRUCTION JOINT IS ABOVE THE ACTUAL GROUND ELEVATION, THE CONTRACTOR SHALL PLACE THE CONSTRUCTION JOINT 1 FT. BELOW THE GROUND LINE.
- FOR ADDITIONAL FOUNDATION NOTES, SEE "GENERAL DRAWING," SHEET 4 OF 7.
- THE CONTRACTOR HAS THE OPTION TO POUR THE ENTIRE CAP IN STAGE I. NO PARTIAL DEMOLITION OF THE EXISTING BRIDGE 080017 WILL BE ALLOWED.

PROJECT NO. 48793.3.1
BLADEN COUNTY
STATION: 118+81.78 -L-

SHEET 3 OF 3

STATE OF NORTH CAROLINA
DEPARTMENT OF TRANSPORTATION
RALEIGH
SUBSTRUCTURE
BENT 6
SECTION & DETAILS



ICE of Carolinas, PLLC
4505 Falls of Neuse Road, Suite 110
Raleigh, North Carolina 27609
Phone: 919-822-0333
License #: P-0999

REVISIONS						SHEET NO.
NO.	BY:	DATE:	NO.	BY:	DATE:	S-90
1			3			TOTAL SHEETS
2			4			107

DOCUMENT NOT CONSIDERED FINAL
UNLESS ALL SIGNATURES COMPLETED

Pen Table: \\192.168.64.12\ncerdur\RDUCAD\Plotting\Pen Tables\ICE.NC.Struct.tbl
Print Driver: \\192.168.64.12\ncerdur\RDUCAD\Plotting\NGD0T\22x34_PDF_ICE.pltcfgr
User: jim.austin
File: R:\Projects\19-77 Division 6 On Call\02 US 701 over Cape Fear River\NC00T\Structures\DWGs\Final\401_090_US_701_SMLL.BT6_03.dgn
Plot Head: 8/12/2020 8:36:57 AM

DRAWN BY: B. J. MANTEI DATE: 5-20-20
CHECKED BY: N. D'AIUTO DATE: 7-17-20
DESIGN E.O.R.: P. R. HOLSHOUSER DATE: 7-23-20