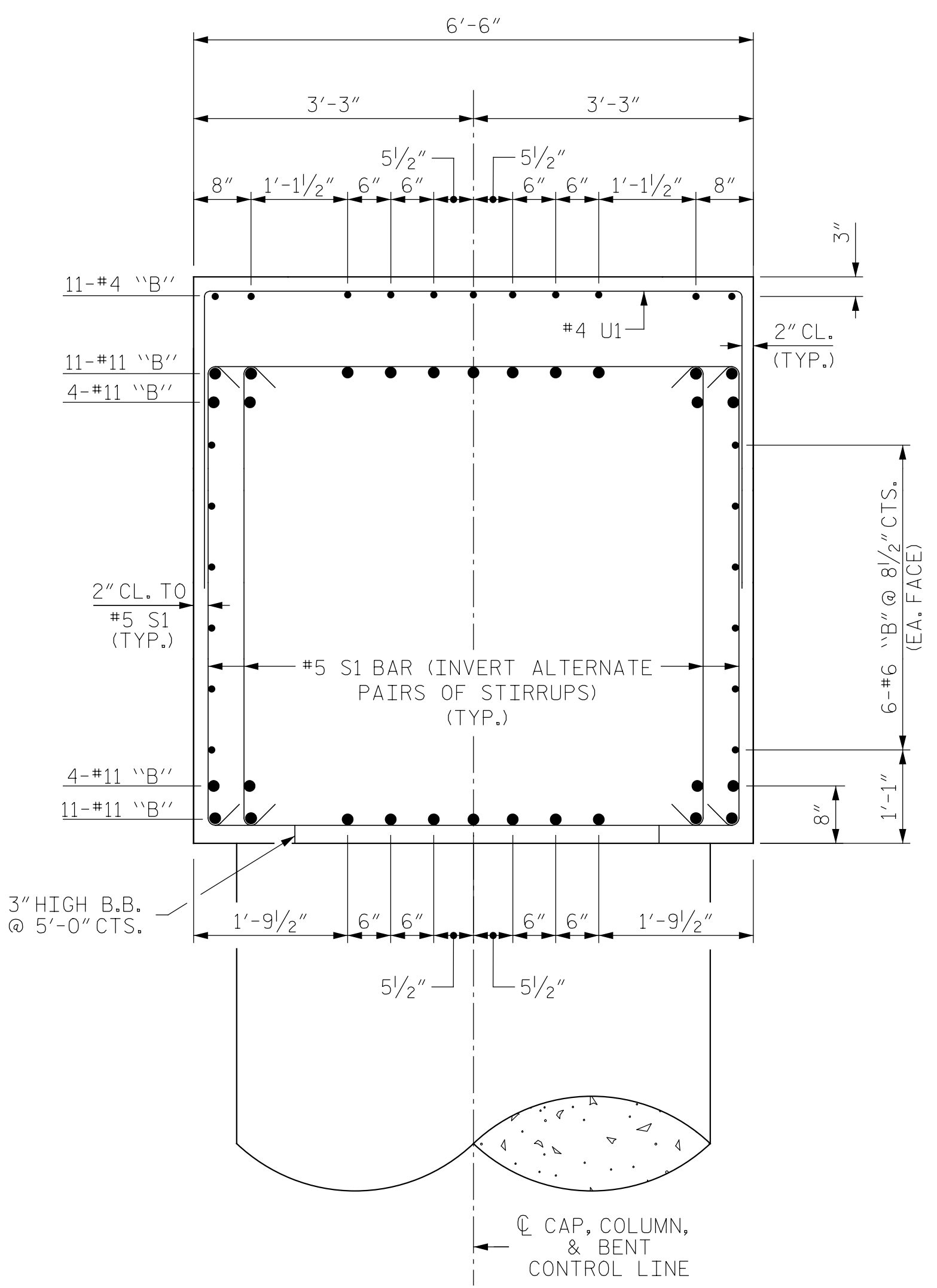
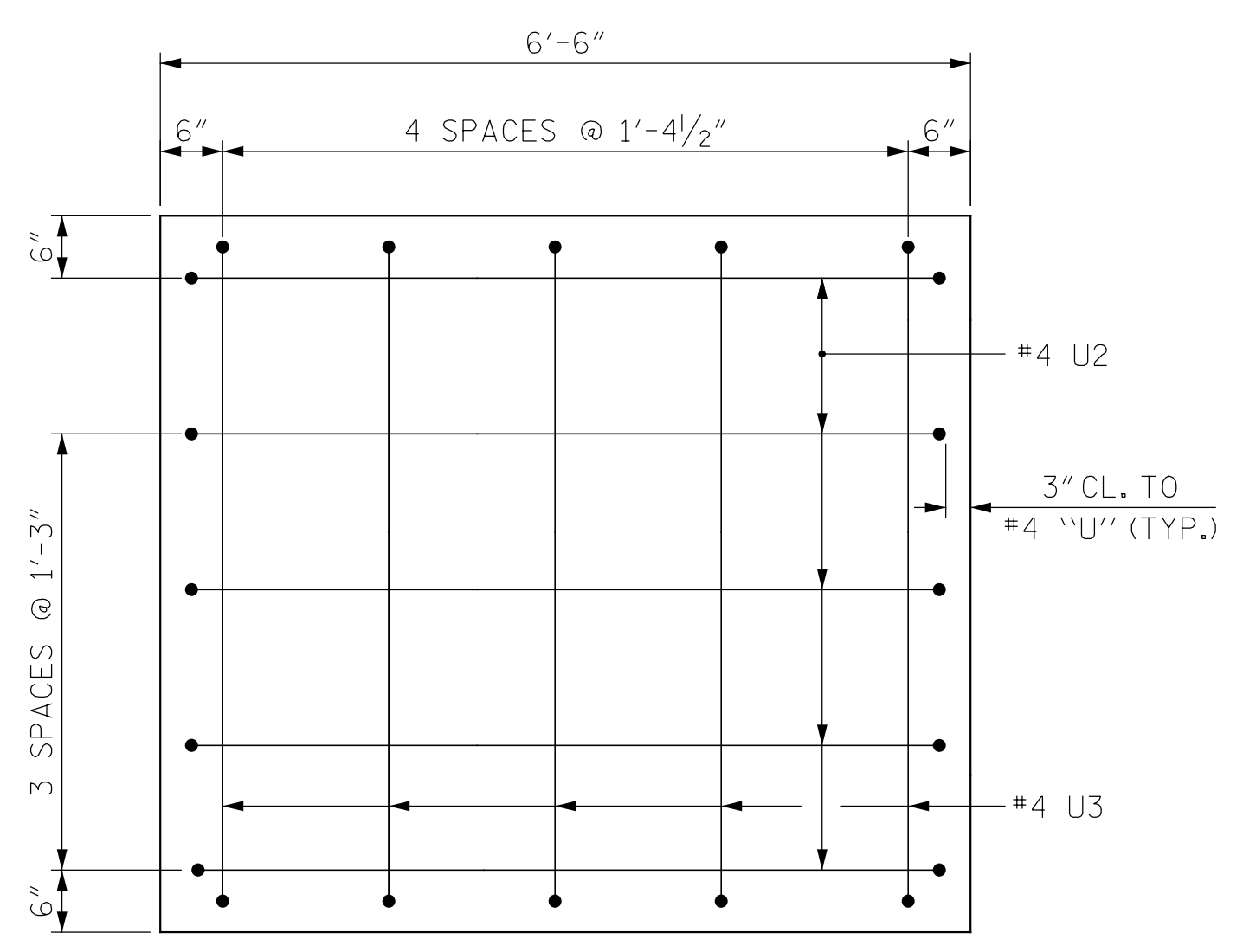


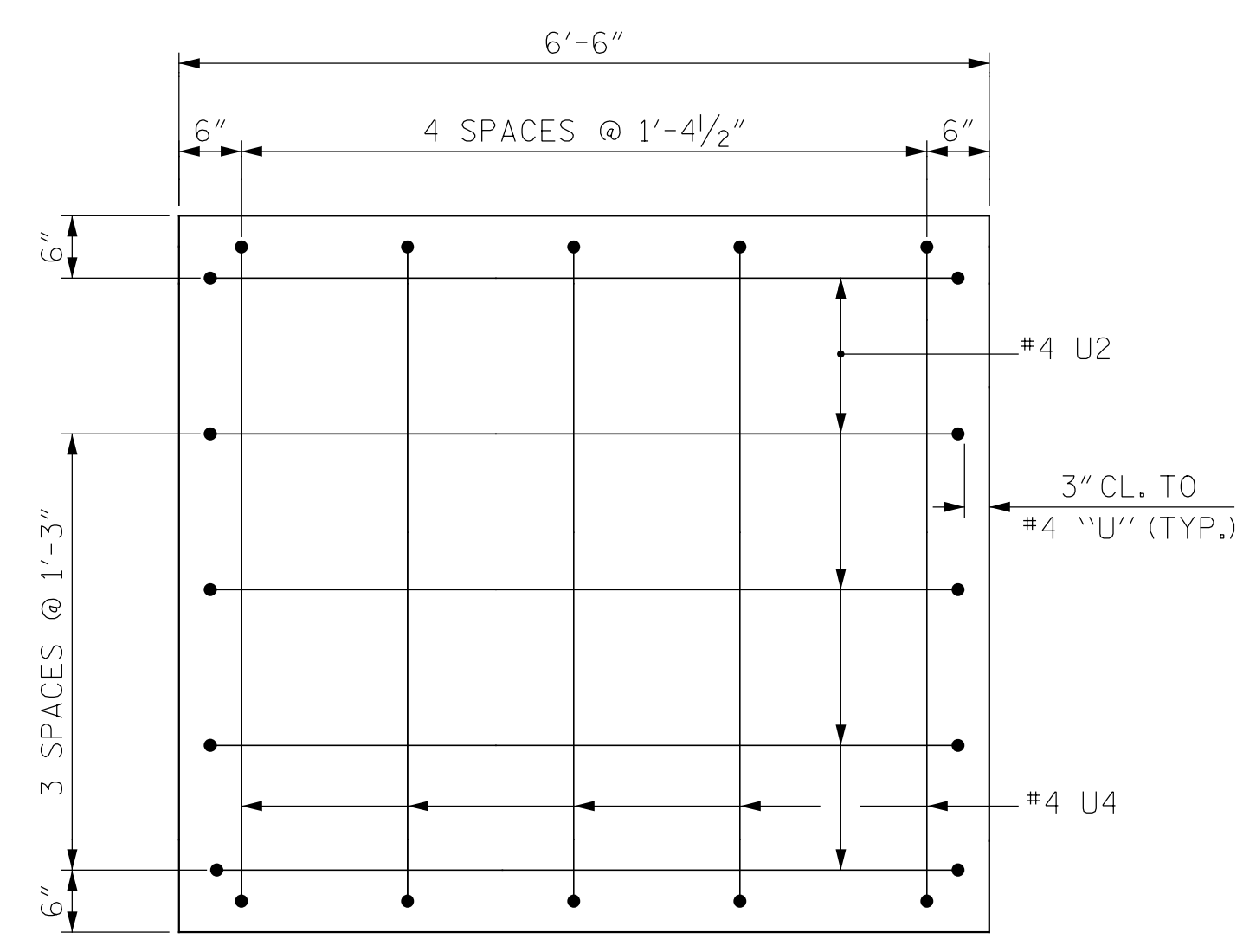
SECTION A-A



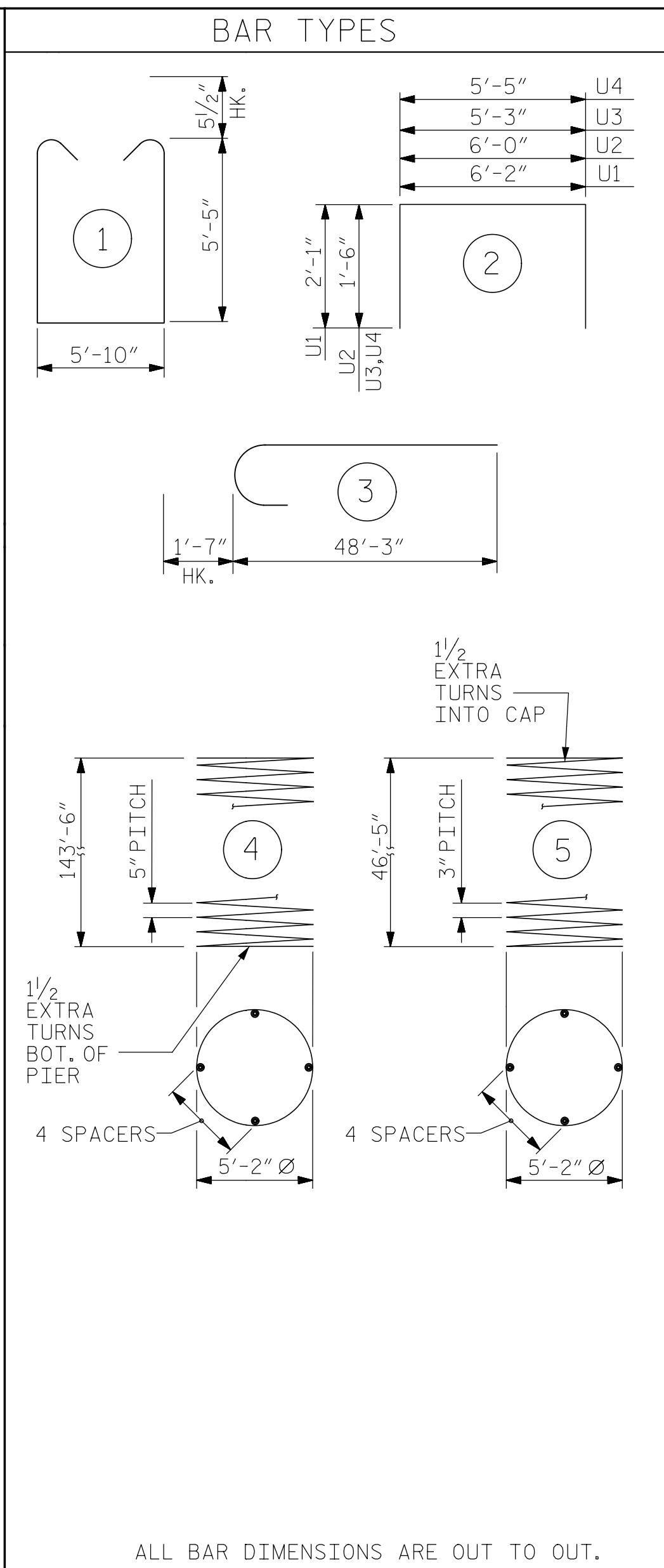
SECTION B-B  
(STEPS NOT SHOWN FOR CLARITY)



VIEW X-X  
(STAGE I CONSTRUCTION)



VIEW Y-Y  
(STAGE II CONSTRUCTION)



ALL BAR DIMENSIONS ARE OUT TO OUT.

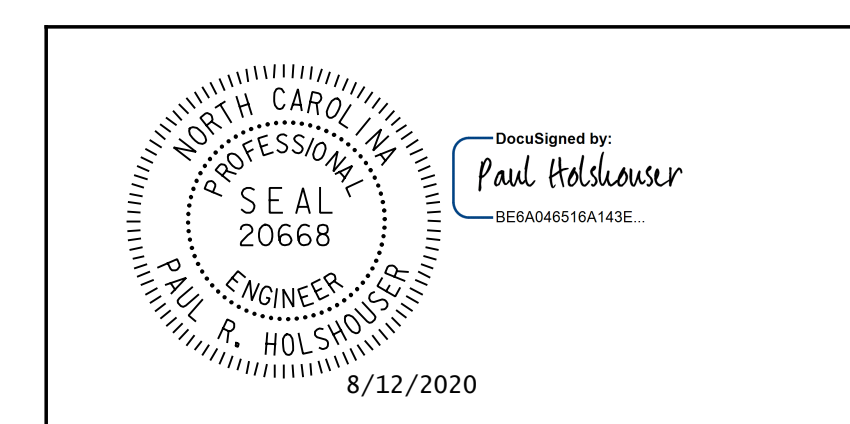
BILL OF MATERIAL											
BENT 5 - STAGE I					BENT 5 - STAGE II						
BAR NO.	NO.	SIZE	TYPE	LENGTH	WEIGHT	BAR NO.	NO.	SIZE	TYPE	LENGTH	WEIGHT
B1	30	11	STR	58' - 9"	9,364	B6	30	11	STR	22' - 5"	3,573
B2	12	6	STR	55' - 9"	1,005	B7	12	6	STR	22' - 6"	406
B3	11	4	STR	14' - 4"	105	B8	11	4	STR	13' - 10"	102
B4	22	4	STR	9' - 0"	132						
B5	11	4	STR	11' - 6"	85	S1	84	5	1	17' - 7"	1,541
M1	336	11	STR	53' - 11"	96,250	U1	35	4	2	10' - 4"	242
S1	172	5	1	17' - 7"	3,154	U2	5	4	2	9' - 0"	30
U1	74	4	2	10' - 4"	511	U4	5	4	2	8' - 3"	28
U2	5	4	2	9' - 0"	30	REINFORCING STEEL		LBS.		5,922	
U3	5	4	2	8' - 5"	28	CLASS "A" CONCRETE BREAKDOWN					
V1	112	11	3	49' - 10"	29,654	POUR #3 - CAP		C.Y.		32.5	
* SP-1	4	5	4	5555' - 9"	23,179	TOTAL CLASS "A" CONCRETE		C.Y.		32.5	
** SP-2	4	4	5	3016' - 3"	8,059	REINFORCING STEEL		LBS.		140,318	
						SPIRAL COLUMN REINFORCING STEEL		LBS.		31,238	
						CLASS "A" CONCRETE BREAKDOWN					
						POUR #2 - COLUMNS		C.Y.		162.5	
						POUR #3 - CAP		C.Y.		77.8	
						TOTAL CLASS "A" CONCRETE		C.Y.		240.3	
						DRILLED PIERS					
						POUR #1 - DRILLED PIERS		C.Y.		603.2	
						6'-0" Ø DRILLED PIERS LIN. FT.				576.0	
						PERMANENT STEEL CASING FOR 6'-0" Ø DRILLED PIERS		LIN. FT.		196.0	
						SID INSPECTIONS		EA.		2	
						CSL TUBES		LIN. FT.		3528.0	
						CSL TESTING		EA.		4	

\* THE SP-1 SPIRAL REINFORCING STEEL SHALL BE W31 OR D31 COLD DRAWN WIRE OR #5 PLAIN OR DEFORMED BAR.  
 \*\* THE SP-2 SPIRAL REINFORCING STEEL SHALL BE W20 OR D20 COLD DRAWN WIRE OR #4 PLAIN OR DEFORMED BAR.

NOTES:

THE CONTRACTOR'S ATTENTION IS CALLED TO THE FACT THAT THE LONGITUDINAL REINFORCEMENT FOR THE DRILLED PIERS IS DETAILED WITH 3 FEET OF EXTRA LENGTH.  
 ALL STEEL IN THE DRILLED PIERS IS INCLUDED IN THE PAY ITEMS FOR "REINFORCING STEEL" AND "SPIRAL COLUMN REINFORCING STEEL."  
 STIRRUPS IN CAP MAY BE SHIFTED AS NECESSARY TO CLEAR ANCHOR BOLTS.  
 HOOKS ON "V" BARS MAY BE TURNED AS NECESSARY FOR PLACING REINFORCING STEEL.  
 THE TOP SURFACE AREAS OF THE BENT CAPS SHALL BE CURED IN ACCORDANCE WITH THE STANDARD SPECIFICATIONS EXCEPT THE MEMBRANE CURING COMPOUND METHOD SHALL NOT BE USED.  
 FOR ADDITIONAL FOUNDATION NOTES, SEE "GENERAL DRAWING," SHEET 4 OF 7.  
 THE CONTRACTOR HAS THE OPTION TO POUR THE ENTIRE CAP IN STAGE I. NO PARTIAL DEMOLITION OF THE EXISTING BRIDGE 080017 WILL BE ALLOWED.

PROJECT NO. 48793.3.1  
 BLADEN COUNTY  
 STATION: 118+81.78 -L-  
 SHEET 3 OF 3



ICE of Carolinas, PLLC  
 4505 Falls of Neuse Road, Suite 110  
 Raleigh, North Carolina 27609  
 Phone: 919-822-0333  
 License #: P-0999

REVISIONS						SHEET NO.
NO.	BY:	DATE:	NO.	BY:	DATE:	S-87
1			3			TOTAL SHEETS
2			4			107

DOCUMENT NOT CONSIDERED FINAL UNLESS ALL SIGNATURES COMPLETED

Pen Table: \\192.168.64.12\ncerdur\RDUCAD\Plotting\Pen Tables\ICE\_NC\_S1ruct.tbl  
 Print Driver: \\192.168.64.12\ncerdur\RDUCAD\Plotting\NGD0T\22x34\_PDF\_ICE.plt  
 User: jim.austin  
 File Name: R:\Projects\19-77 Division 6 On Call\02 US 701 over Cape Fear River\NC00T\Structures\Drawings\Final\401-087\_US\_701\_SWL\_BT5\_03.dgn  
 Plot Head: 8/12/2020 8:36:55 AM

DRAWN BY: B. J. MANTEI DATE: 5-20-20  
 CHECKED BY: N. D'AIUTO DATE: 7-17-20  
 DESIGN E.O.R.: P. R. HOLSHOUSER DATE: 7-23-20