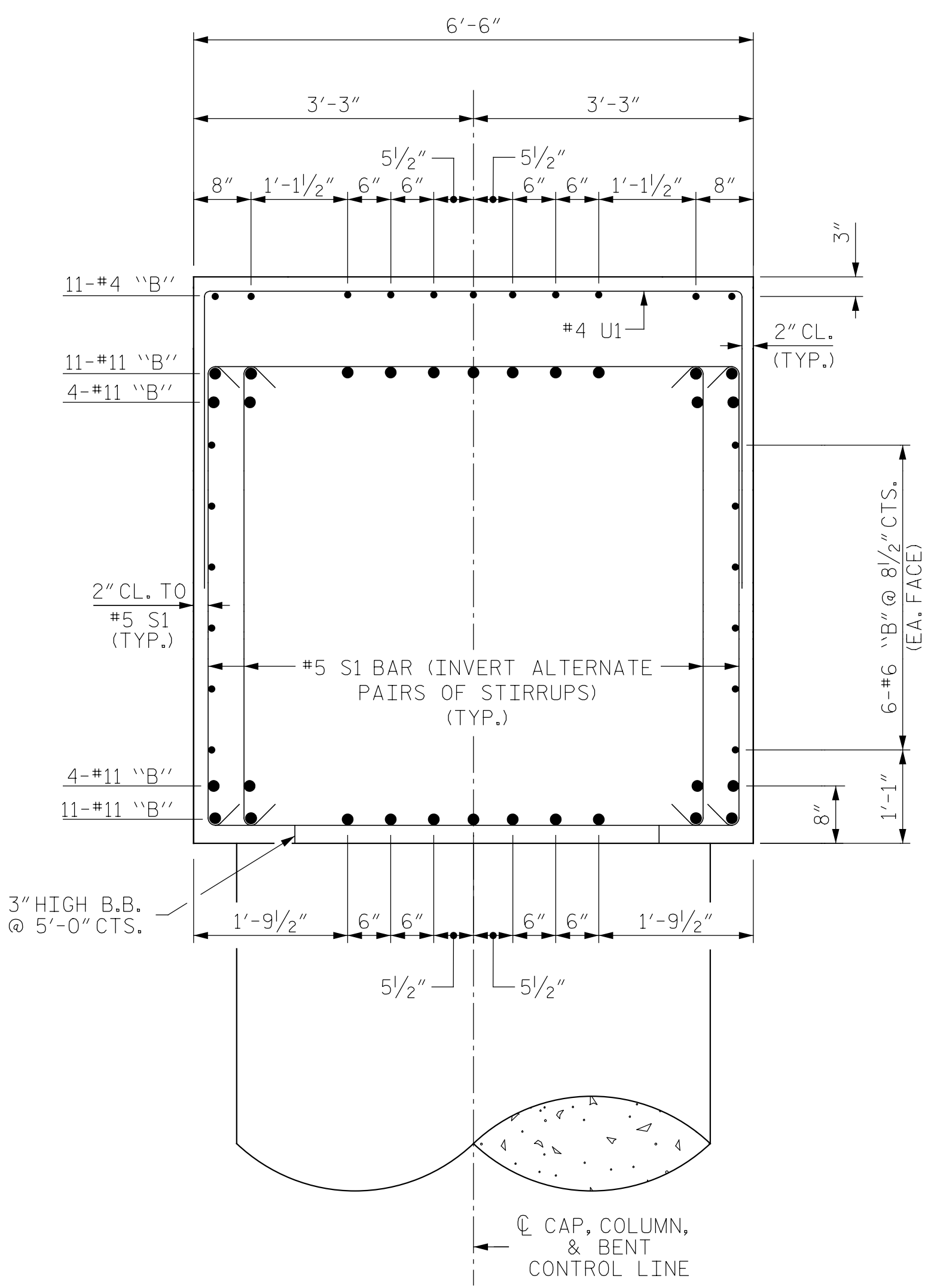
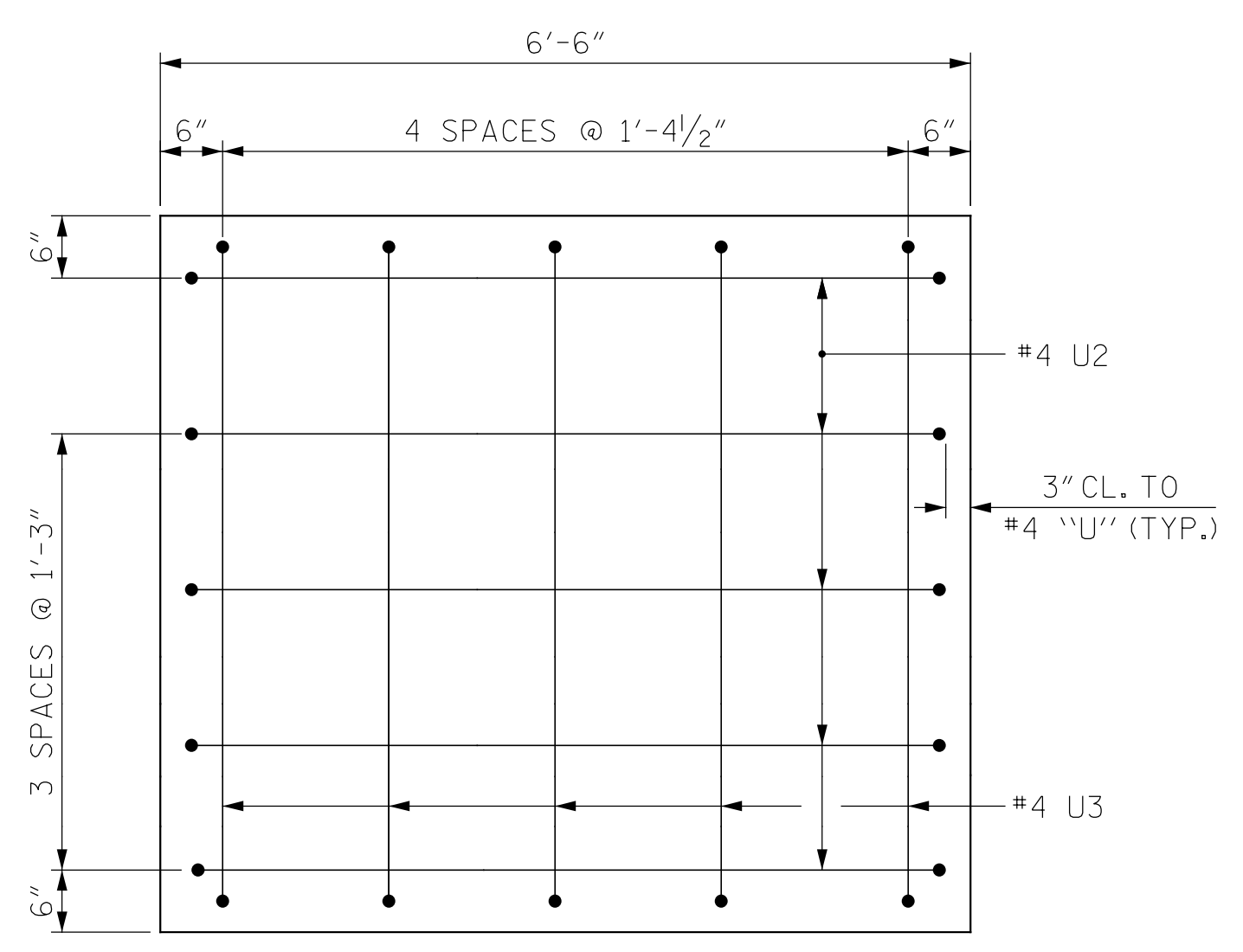


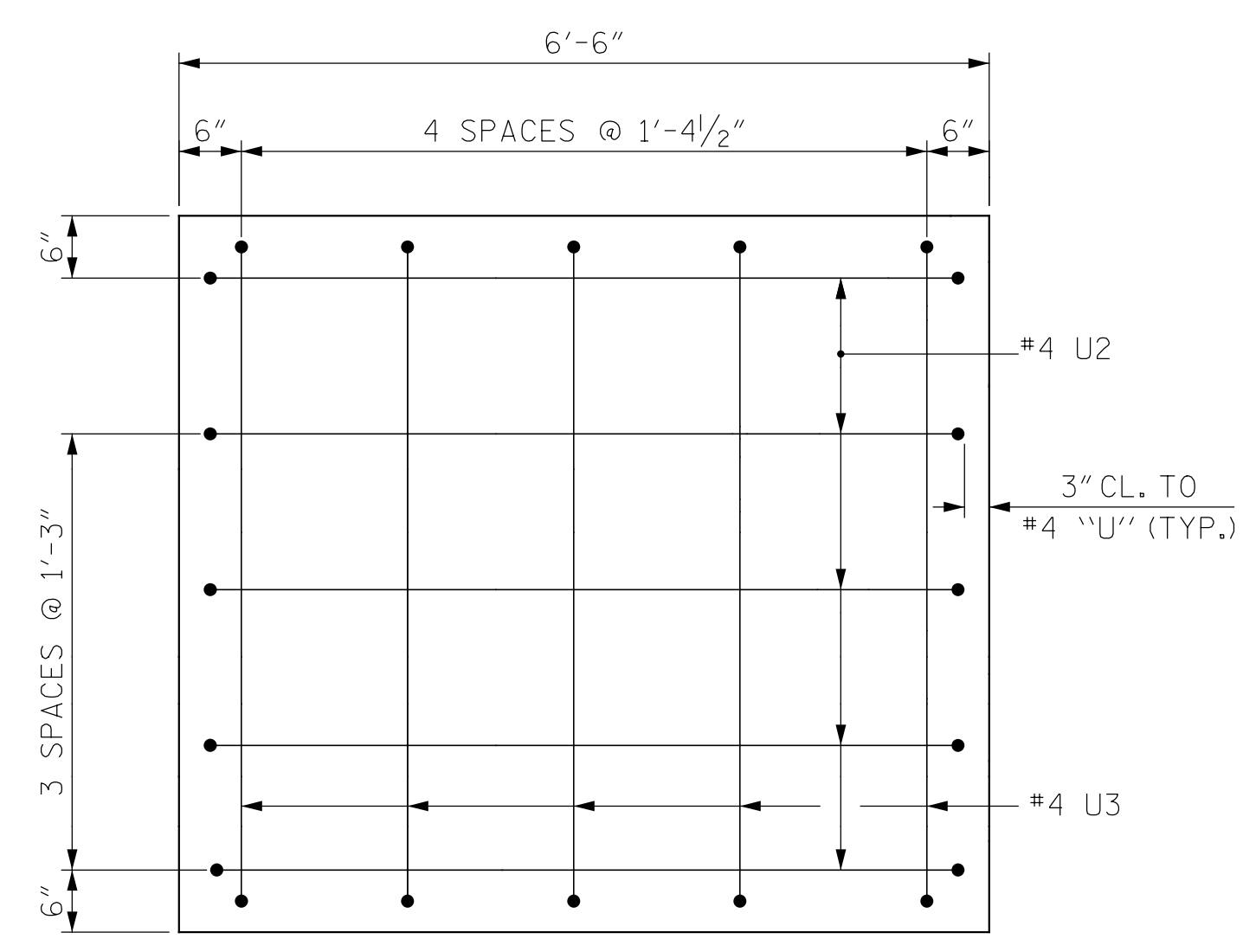
SECTION A-A



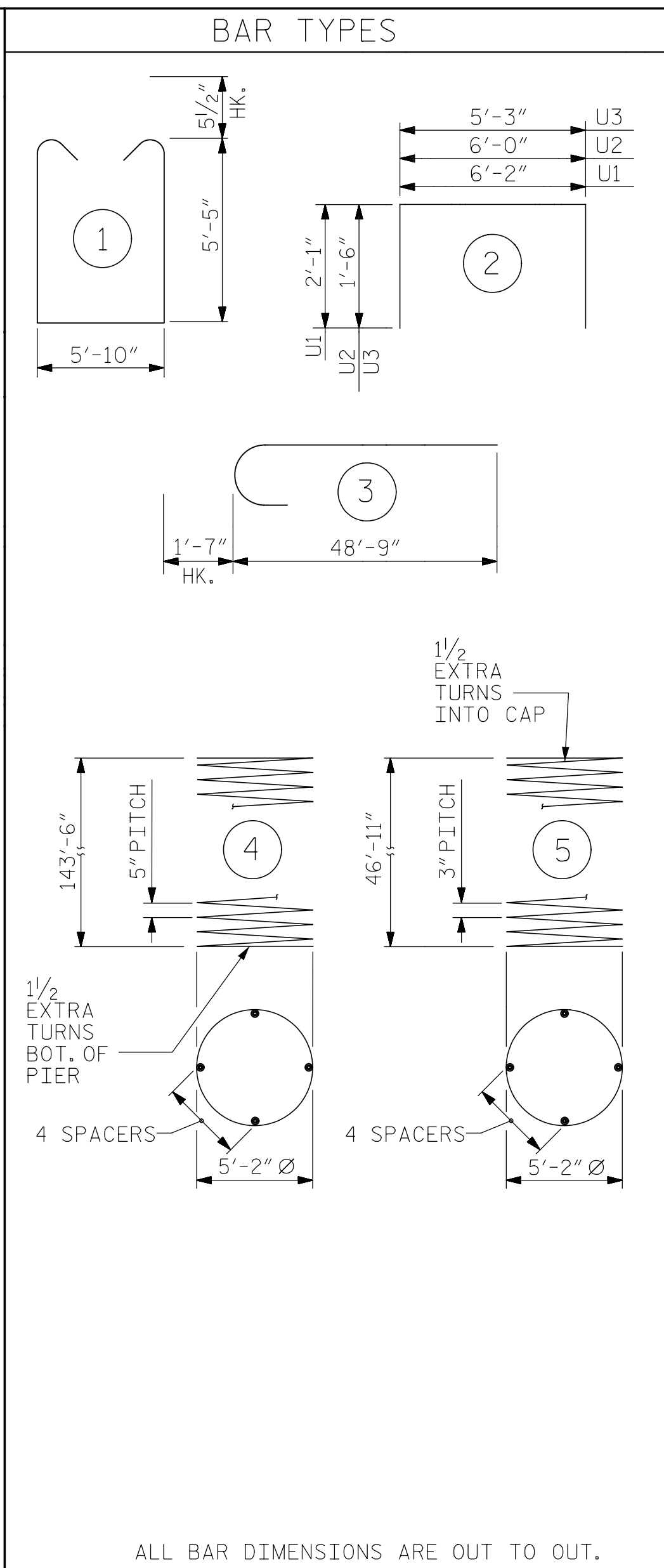
SECTION B-B
(STEPS NOT SHOWN FOR CLARITY)



VIEW X-X
(STAGE I CONSTRUCTION)



VIEW Y-Y
(STAGE II CONSTRUCTION)



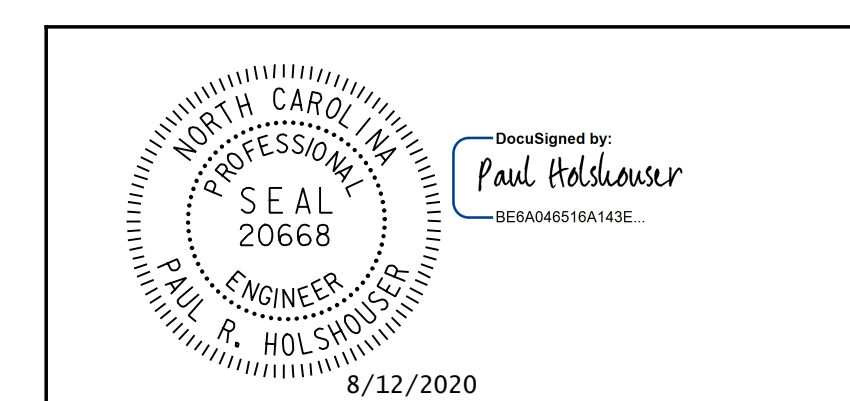
ALL BAR DIMENSIONS ARE OUT TO OUT.

| BILL OF MATERIAL | | | | | | | | | | | | |
|------------------|------|------|--------|------------|--|------------------------------|------|--------|--------|-----------|--------|---------|
| BENT 3 - STAGE I | | | | | BENT 3 - STAGE II | | | | | | | |
| BAR NO. | SIZE | TYPE | LENGTH | WEIGHT | BAR NO. | SIZE | TYPE | LENGTH | WEIGHT | | | |
| B1 | 30 | 11 | STR | 58' - 9" | 9,364 | B6 | 30 | 11 | STR | 22' - 5" | 3,573 | |
| B2 | 12 | 6 | STR | 55' - 9" | 1,005 | B7 | 12 | 6 | STR | 22' - 6" | 406 | |
| B3 | 11 | 4 | STR | 14' - 4" | 105 | B8 | 11 | 4 | STR | 13' - 10" | 102 | |
| B4 | 22 | 4 | STR | 9' - 0" | 132 | | | | | | | |
| B5 | 11 | 4 | STR | 11' - 6" | 85 | S1 | 84 | 5 | 1 | 17' - 7" | 1,541 | |
| M1 | 336 | 11 | STR | 53' - 11" | 96,250 | U1 | 35 | 4 | 2 | 10' - 4" | 242 | |
| S1 | 172 | 5 | 1 | 17' - 7" | 3,154 | U2 | 5 | 4 | 2 | 9' - 0" | 30 | |
| U1 | 74 | 4 | 2 | 10' - 4" | 511 | U3 | 5 | 4 | 2 | 8' - 3" | 28 | |
| U2 | 5 | 4 | 2 | 9' - 0" | 30 | REINFORCING STEEL | | | | | LBS. | 5,922 |
| U3 | 5 | 4 | 2 | 8' - 3" | 28 | CLASS "A" CONCRETE BREAKDOWN | | | | | | |
| V1 | 112 | 11 | 3 | 50' - 4" | 29,951 | POUR #3 - CAP | | | | | C.Y. | 33.0 |
| *SP-1 | 4 | 5 | 4 | 5555' - 9" | 23,179 | TOTAL CLASS "A" CONCRETE | | | | | C.Y. | 33.0 |
| **SP-2 | 4 | 4 | 5 | 3048' - 5" | 8,145 | REINFORCING STEEL | | | | | LBS. | 140,615 |
| | | | | | SPIRAL COLUMN REINFORCING STEEL | | | | | LBS. | 31,324 | |
| | | | | | CLASS "A" CONCRETE BREAKDOWN | | | | | | | |
| | | | | | POUR #2 - COLUMNS | | | | | C.Y. | 164.2 | |
| | | | | | POUR #3 - CAP | | | | | C.Y. | 76.7 | |
| | | | | | TOTAL CLASS "A" CONCRETE | | | | | C.Y. | 240.9 | |
| | | | | | DRILLED PIERS | | | | | | | |
| | | | | | POUR #1 - DRILLED PIERS | | | | | C.Y. | 603.2 | |
| | | | | | 6'-0" Ø DRILLED PIERS LIN. FT. | | | | | | 576.0 | |
| | | | | | PERMANENT STEEL CASING FOR 6'-0" Ø DRILLED PIERS | | | | | LIN. FT. | 136.0 | |
| | | | | | SID INSPECTIONS | | | | | EA. | 2 | |
| | | | | | CSL TUBES | | | | | LIN. FT. | 3528.0 | |
| | | | | | CSL TESTING | | | | | EA. | 4 | |

NOTES:

- * THE SP-1 SPIRAL REINFORCING STEEL SHALL BE W31 OR D31 COLD DRAWN WIRE OR #5 PLAIN OR DEFORMED BAR.
- ** THE SP-2 SPIRAL REINFORCING STEEL SHALL BE W20 OR D20 COLD DRAWN WIRE OR #4 PLAIN OR DEFORMED BAR.
- THE CONTRACTOR'S ATTENTION IS CALLED TO THE FACT THAT THE LONGITUDINAL REINFORCEMENT FOR THE DRILLED PIERS IS DETAILED WITH 3 FEET OF EXTRA LENGTH.
- ALL STEEL IN THE DRILLED PIERS IS INCLUDED IN THE PAY ITEMS FOR "REINFORCING STEEL" AND "SPIRAL COLUMN REINFORCING STEEL."
- STIRRUPS IN CAP MAY BE SHIFTED AS NECESSARY TO CLEAR ANCHOR BOLTS.
- HOOKS ON "V" BARS MAY BE TURNED AS NECESSARY FOR PLACING REINFORCING STEEL.
- THE TOP SURFACE AREAS OF THE BENT CAPS SHALL BE CURED IN ACCORDANCE WITH THE STANDARD SPECIFICATIONS EXCEPT THE MEMBRANE CURING COMPOUND METHOD SHALL NOT BE USED
- FOR ADDITIONAL FOUNDATION NOTES, SEE "GENERAL DRAWING," SHEET 4 OF 7.
- THE CONTRACTOR HAS THE OPTION TO POUR THE ENTIRE CAP IN STAGE I. NO PARTIAL DEMOLITION OF THE EXISTING BRIDGE 080017 WILL BE ALLOWED.

PROJECT NO. 48793.3.1
BLADEN COUNTY
 STATION: 118+81.78 -L-
 SHEET 3 OF 3



STATE OF NORTH CAROLINA
 DEPARTMENT OF TRANSPORTATION
 RALEIGH
 SUBSTRUCTURE
 BENT 3
 SECTION & DETAILS

DRAWN BY : B. J. MANTEI DATE : 5-20-20
 CHECKED BY : N. D'AIUTO DATE : 7-17-20
 DESIGN E.O.R. : P. R. HOLSHOUSER DATE : 7-23-20

DOCUMENT NOT CONSIDERED FINAL
 UNLESS ALL SIGNATURES COMPLETED

ICE of Carolinas, PLLC
 4505 Falls of Neuse Road, Suite 110
 Raleigh, North Carolina 27609
 Phone: 919-822-0333
 License #: P-0999

| REVISIONS | | | | | | SHEET NO. |
|-----------|-----|-------|-----|-----|-------|--------------|
| NO. | BY: | DATE: | NO. | BY: | DATE: | S-81 |
| 1 | | | 3 | | | TOTAL SHEETS |
| 2 | | | 4 | | | 107 |

Pen Table: \\192.168.64.12\ncerdur\RDUCAD\Plotting\Pen Tables\ICE_NC_S1ruct.tbl
 Print Driver: \\192.168.64.12\ncerdur\RDUCAD\Plotting\NGD0T\22x34_PDF_ICE.plt
 User: jim.austin
 File: R:\Projects\19-77 Division 6 On Call\02 US 701 over Cape Fear River\NC00T\Structures\Drawings\Final\401-081-US-701-SMU-BT3_03.dgn
 Plot Head: 8/12/2020 8:36:53 AM