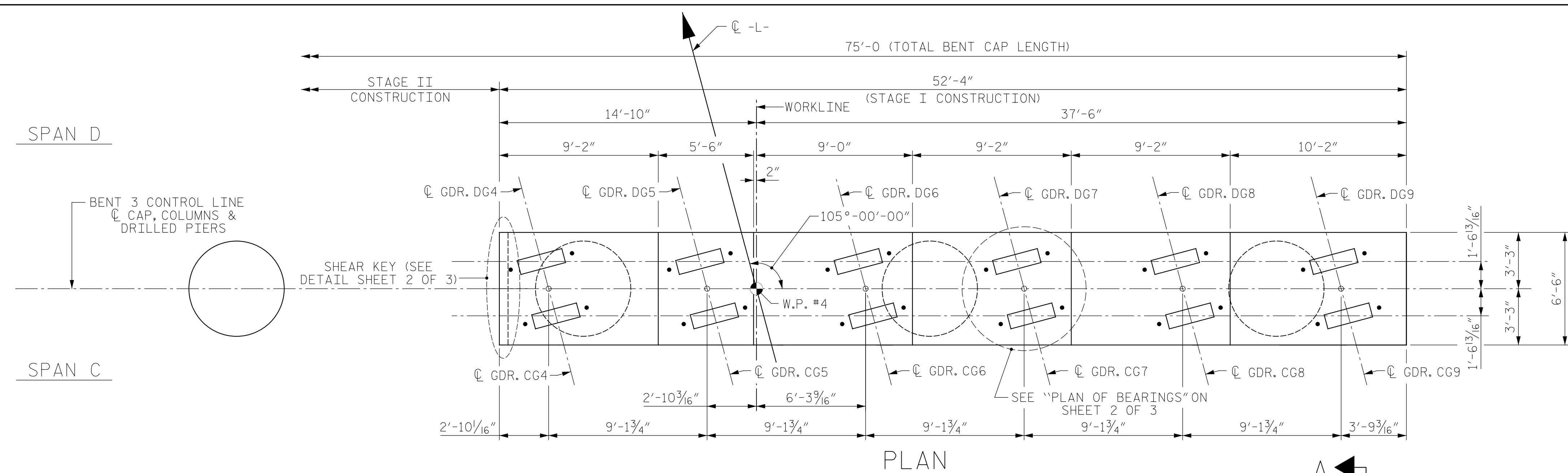
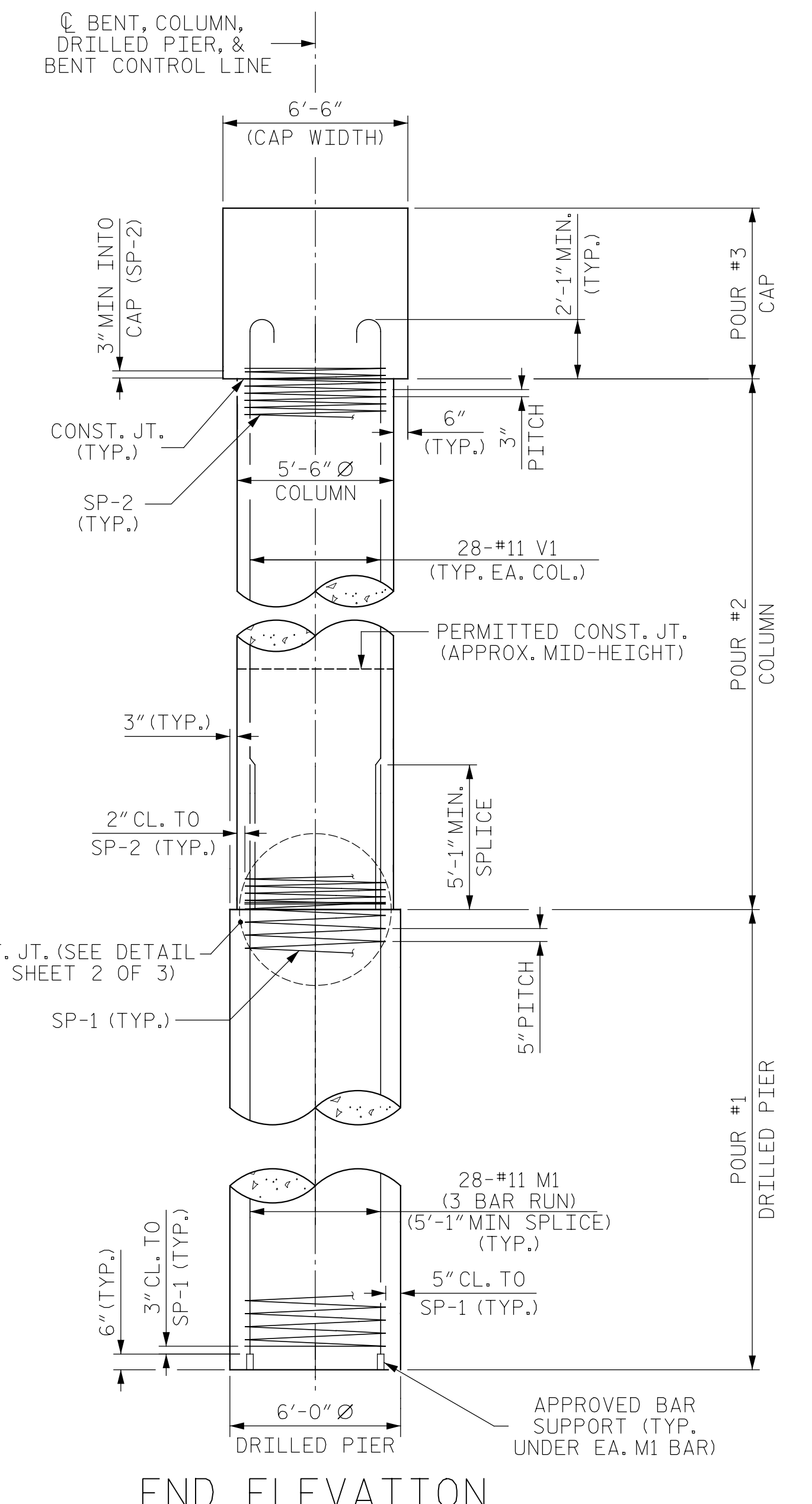
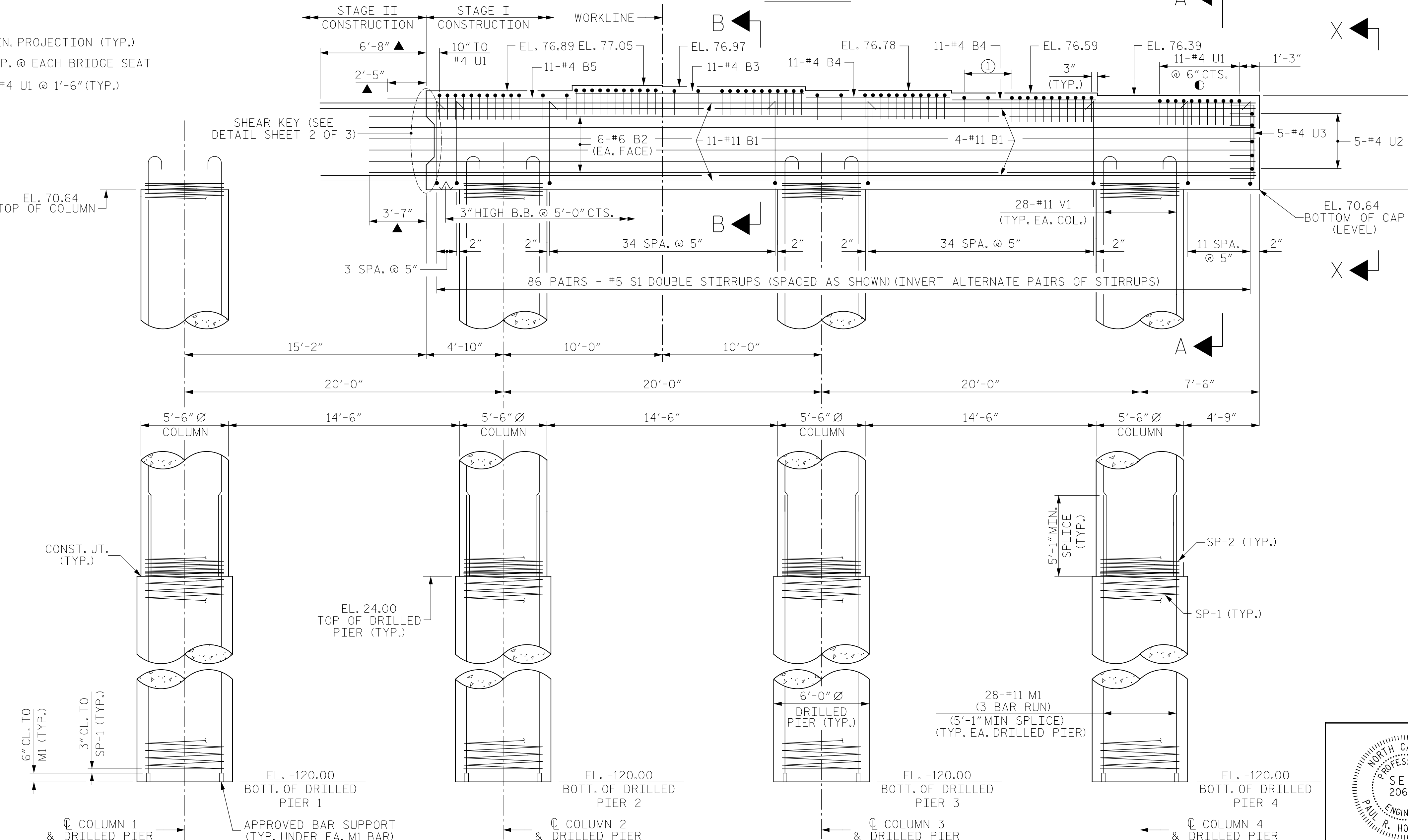


**NOTES:**  
FOR "SECTION A-A" AND "SECTION B-B", SEE SHEET 3 OF 3.  
FOR "VIEW X-X", SEE SHEET 3 OF 3  
FOR NOTES, SEE SHEET 3 OF 3.



- ▲ MIN. PROJECTION (TYP.)
- TYP. @ EACH BRIDGE SEAT
- ① 2-#4 U1 @ 1'-6" (TYP.)

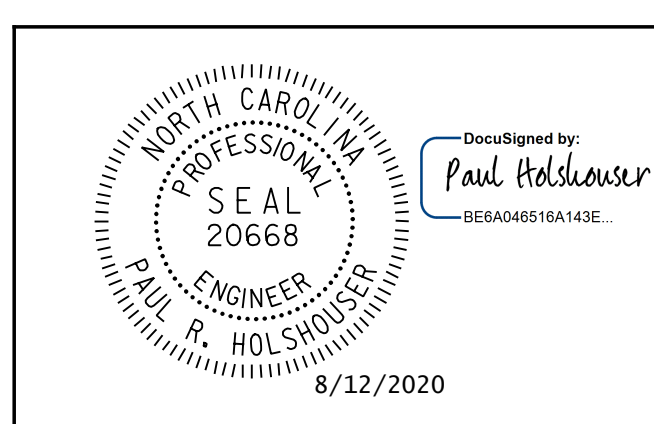


Pen Table: \\192.168.64.12\icardu\RDUCAD\Plotting\Pen Tables\ICE.NC.Struct.tbl  
Print Driver: \\192.168.64.12\icardu\RDUCAD\Plotting\NGD0T\22x34\_PDF\_ICE.plt  
User: jmaust  
File: R:\Projects\19-77 Division 6 On Call\02 US 701 over Cape Fear River\NC00T\Structures\Dwgs\Final\401-079\_US\_701\_SWL\_BT3\_01.dgn  
Plot Date: 8/11/2020 10:09:44 PM

DRAWN BY: B. J. MANTEI DATE: 5-17-20  
CHECKED BY: N. D'AIUTO DATE: 7-17-20  
DESIGN E.O.R.: P. R. HOLSHOUSER DATE: 7-23-20

ALL DIMENSIONS AND DETAILS SHOWN FOR DRILLED PIERS ARE TYPICAL FOR EACH PIER UNLESS OTHERWISE NOTED.

DOCUMENT NOT CONSIDERED FINAL UNLESS ALL SIGNATURES COMPLETED



ICE of Carolinas, PLLC  
4505 Falls of Neuse Road, Suite 110  
Raleigh, North Carolina 27609  
Phone: 919-822-0333  
License #: P-0999

PROJECT NO. 48793.3.1  
BLADEN COUNTY  
STATION: 118+81.78 -L-

SHEET 1 OF 3

REVISIONS					
NO.	BY:	DATE:	NO.	BY:	DATE:
1			3		
2			4		

SHEET NO. S-79  
TOTAL SHEETS 107