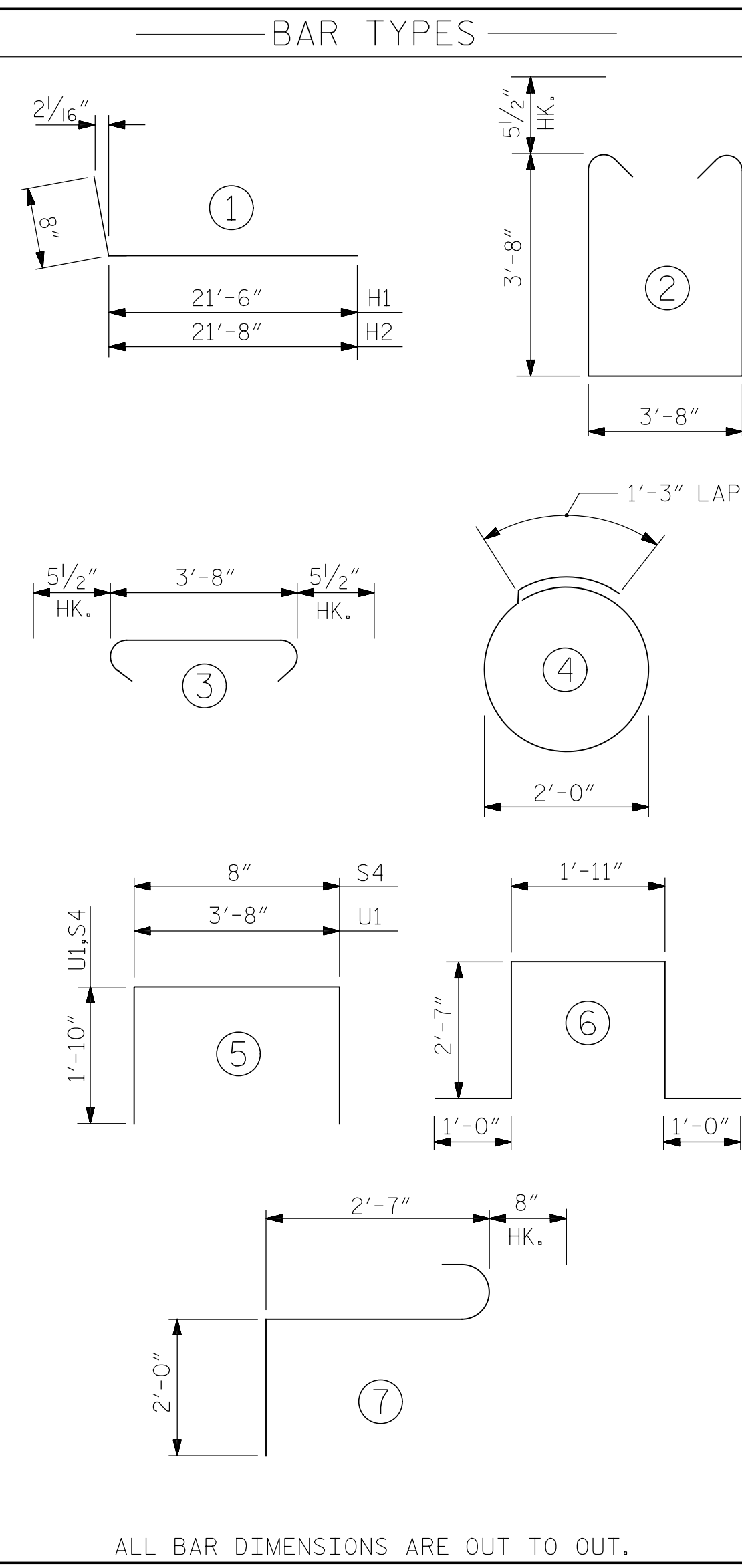


BAGGED STONE AND PIPE SHALL BE PLACED IMMEDIATELY AFTER COMPLETION OF END BENT EXCAVATION. PIPE MAY BE EITHER CONCRETE, CORRUGATED STEEL, CORRUGATED ALUMINUM ALLOY, OR CORRUGATED PLASTIC. PERFORATED PIPE WILL NOT BE ALLOWED.

BAGGED STONE SHALL REMAIN IN PLACE UNTIL THE ENGINEER DIRECTS THAT IT BE REMOVED. THE CONTRACTOR SHALL REMOVE AND DISPOSE OF SILT ACCUMULATIONS AT BAGGED STONE WHEN SO DIRECTED BY THE ENGINEER. BAGS SHALL BE REMOVED AND REPLACED WHENEVER THE ENGINEER DETERMINES THAT THEY HAVE DETERIORATED AND LOST THEIR EFFECTIVENESS.

NO SEPARATE PAYMENT WILL BE MADE FOR THIS WORK AND THE ENTIRE COST OF THIS WORK SHALL BE INCLUDED IN THE UNIT CONTRACT PRICE BID FOR THE SEVERAL PAY ITEMS.

TEMPORARY DRAINAGE AT END BENT



BILL OF MATERIAL

END BENT 1 - STAGE I

| BAR | NO. | SIZE | TYPE | LENGTH    | WEIGHT |
|-----|-----|------|------|-----------|--------|
| B1  | 24  | 10   | STR  | 34' - 8"  | 3,580  |
| B2  | 12  | 5    | STR  | 31' - 8"  | 396    |
| B3  | 15  | 4    | STR  | 3' - 8"   | 37     |
| B4  | 8   | 4    | STR  | 30' - 10" | 165    |
| B5  | 6   | 4    | STR  | 35' - 11" | 144    |
| H1  | 26  | 4    | 1    | 22' - 2"  | 385    |
| H2  | 26  | 4    | 1    | 22' - 4"  | 388    |
| K1  | 6   | 4    | STR  | 2' - 10"  | 11     |
| K2  | 28  | 4    | STR  | 29' - 4"  | 549    |
| S1  | 106 | 5    | 2    | 11' - 11" | 1,317  |
| S2  | 106 | 5    | 3    | 4' - 7"   | 507    |
| S3  | 44  | 4    | 4    | 7' - 7"   | 223    |
| S4  | 55  | 4    | 5    | 4' - 4"   | 159    |
| S5  | 3   | 6    | 6    | 9' - 1"   | 41     |
| S6  | 3   | 6    | 7    | 5' - 3"   | 24     |
| U1  | 24  | 4    | 5    | 7' - 4"   | 118    |
| V1  | 50  | 5    | STR  | 11' - 9"  | 613    |
| V2  | 110 | 5    | STR  | 10' - 2"  | 1,166  |

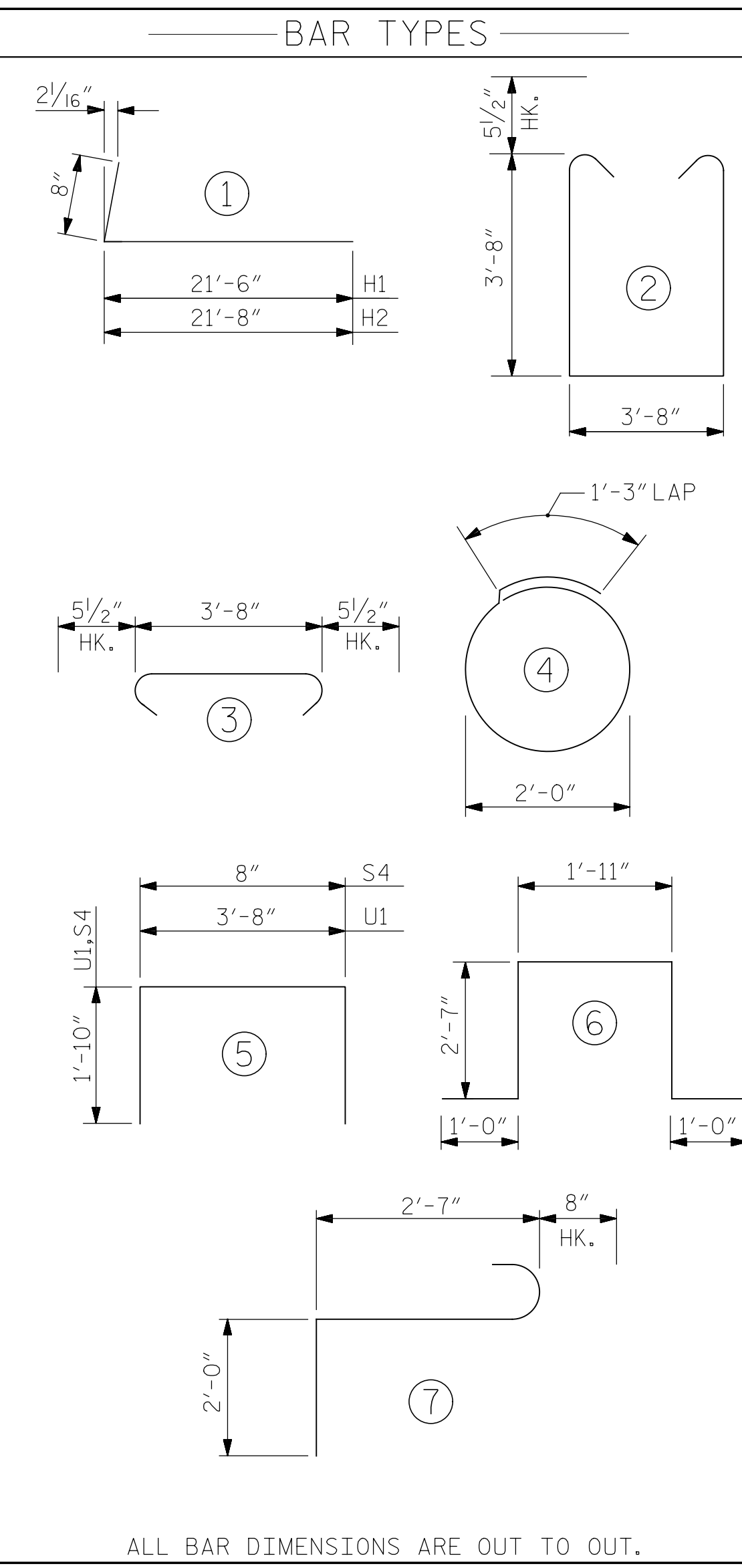
REINFORCING STEEL LBS. 9,823

CLASS "A" CONCRETE BREAKDOWN

| POUR            | DESCRIPTION                     | C.Y. |
|-----------------|---------------------------------|------|
| POUR #1         | CAP, COLLARS & LOWER WING WALLS | 42.1 |
| POUR #2         | BACKWALL & UPPER WING WALLS     | 21.6 |
| TOTAL CLASS "A" | CONCRETE C.Y.                   | 63.7 |

HP 14X73 STEEL PILES

| NO.   | 12 | LIN. FT. | 1260.00 |
|---|----|----------|---------|
| PDA TESTING   |    | EA.      | 1       |
| PILE REDRIVES   |    | EA.      | 4       |
| PILE DRIVING EQUIPMENT SETUP FOR HP 14X73 STEEL PILES |    | EA.      | 12      |



BILL OF MATERIAL

END BENT 1 - STAGE II

| BAR | NO. | SIZE | TYPE | LENGTH    | WEIGHT |
|-----|-----|------|------|-----------|--------|
| B6  | 12  | 10   | STR  | 23' - 9"  | 1,226  |
| B7  | 6   | 5    | STR  | 23' - 10" | 149    |
| B3  | 7   | 4    | STR  | 3' - 8"   | 17     |
| B8  | 4   | 4    | STR  | 24' - 6"  | 65     |
| B9  | 6   | 4    | STR  | 12' - 2"  | 49     |
| H1  | 26  | 4    | 1    | 22' - 2"  | 385    |
| H2  | 26  | 4    | 1    | 22' - 4"  | 388    |
| K3  | 6   | 4    | STR  | 2' - 8"   | 11     |
| K4  | 14  | 4    | STR  | 23' - 11" | 224    |
| S1  | 45  | 5    | 2    | 11' - 11" | 559    |
| S2  | 45  | 5    | 3    | 4' - 7"   | 215    |
| S3  | 24  | 4    | 4    | 7' - 7"   | 122    |
| S4  | 22  | 4    | 5    | 4' - 4"   | 64     |
| S5  | 3   | 6    | 6    | 9' - 1"   | 41     |
| S6  | 3   | 6    | 7    | 5' - 3"   | 24     |
| U1  | 12  | 4    | 5    | 7' - 4"   | 59     |
| V3  | 50  | 5    | STR  | 11' - 11" | 621    |
| V4  | 44  | 5    | STR  | 10' - 3"  | 470    |

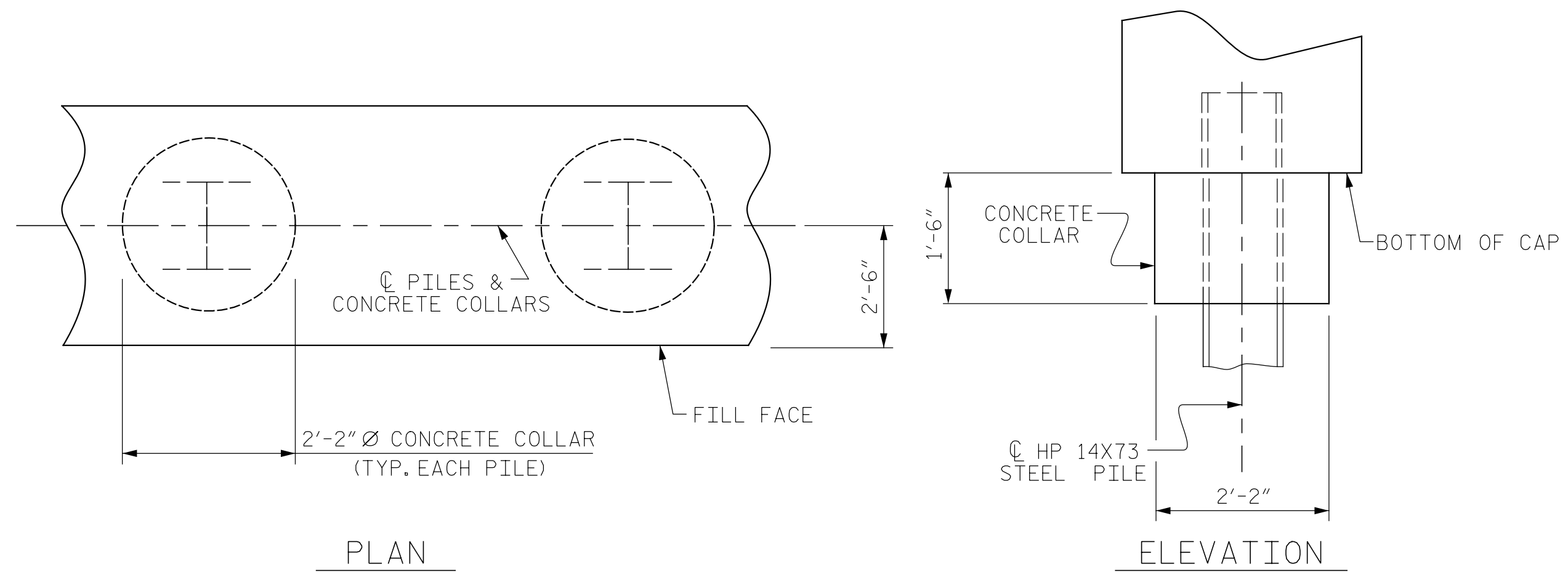
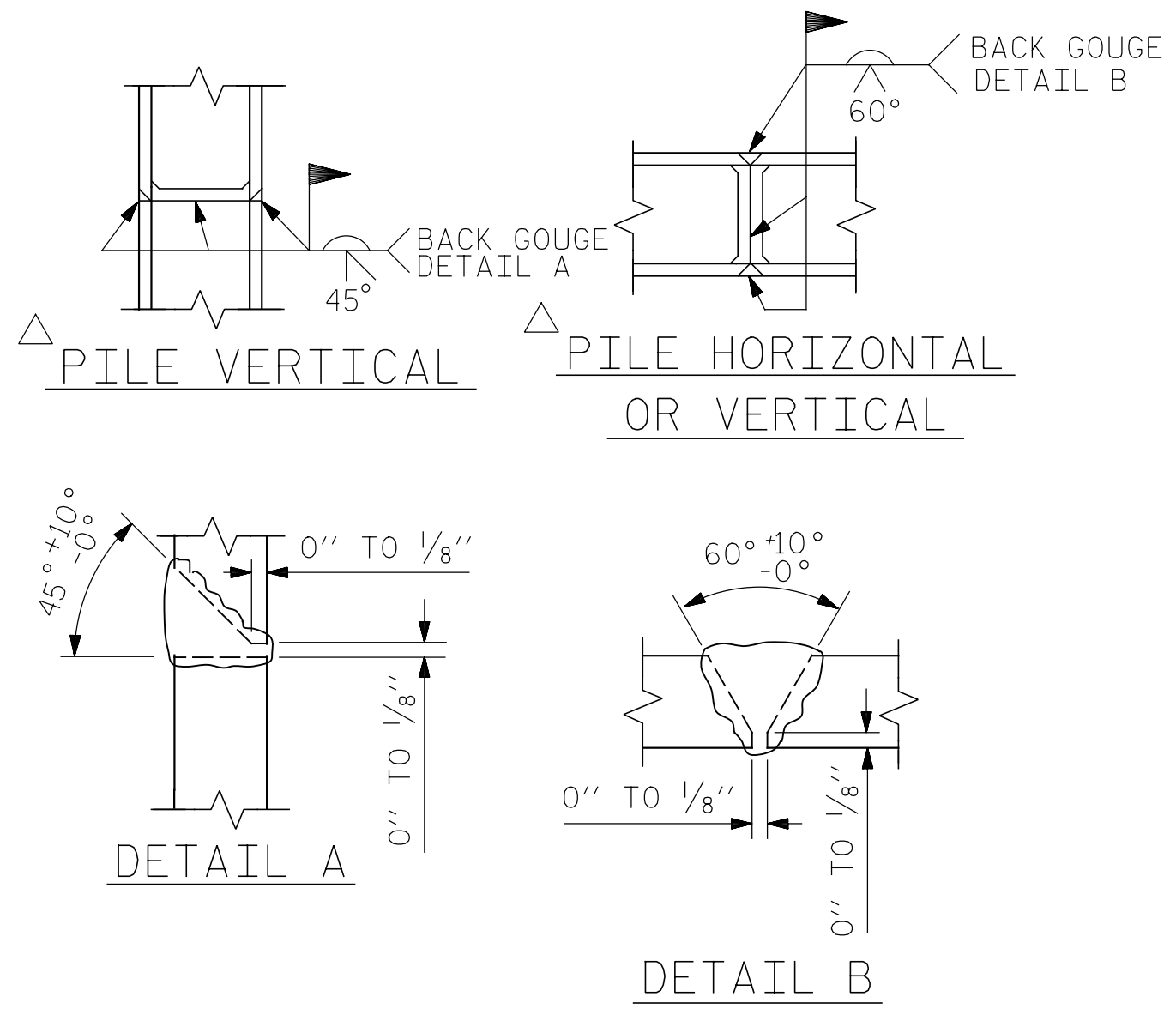
REINFORCING STEEL LBS. 4,689

CLASS "A" CONCRETE BREAKDOWN

| POUR            | DESCRIPTION                     | C.Y. |
|-----------------|---------------------------------|------|
| POUR #1         | CAP, COLLARS & LOWER WING WALLS | 20.9 |
| POUR #2         | BACKWALL & UPPER WING WALLS     | 12.6 |
| TOTAL CLASS "A" | CONCRETE C.Y.                   | 33.5 |

HP 14X73 STEEL PILES

| NO.   | 7 | LIN. FT. | 735.00 |
|---|---|----------|--------|
| PDA TESTING   |   | EA.      | 1      |
| PILE REDRIVES   |   | EA.      | 4      |
| PILE DRIVING EQUIPMENT SETUP FOR HP 14X73 STEEL PILES |   | EA.      | 7      |



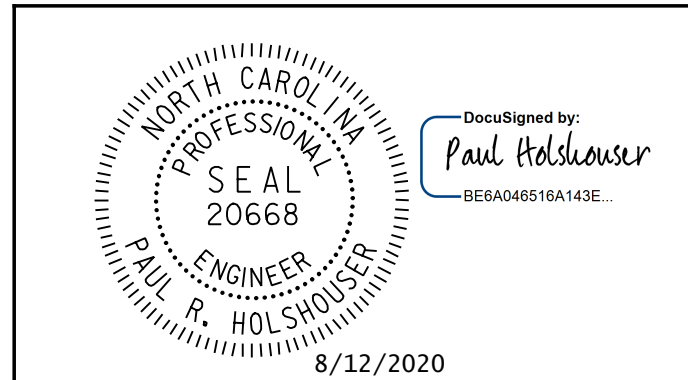
CORROSION PROTECTION FOR STEEL PILES DETAIL

PROJECT NO. 48793.3.1

BLADEN COUNTY

STATION: 118+81.78 -L-

SHEET 6 OF 6



STATE OF NORTH CAROLINA

DEPARTMENT OF TRANSPORTATION

RALEIGH

SUBSTRUCTURE

END BENT 1

DRAWN BY : N.D. AIUTO DATE : 7-02-20

CHECKED BY : K. C. SAMUDRALA DATE : 7-09-20

DESIGN E.O.R. : P. R. HOLSHOUSER DATE : 7-23-20

DOCUMENT NOT CONSIDERED FINAL UNLESS ALL SIGNATURES COMPLETED

ICE of Carolinas, PLLC

4505 Falls of Neuse Road, Suite 110

Raleigh, North Carolina 27609

Phone: 919-822-0333

License #: P-0999

REVISIONS

| NO. | BY: | DATE: | NO. | BY: | DATE: |
|-----|-----|-------|-----|-----|-------|
| 1   |     |       | 3   |     |       |
| 2   |     |       | 4   |     |       |

SHEET NO. S-72

TOTAL SHEETS 107

Pen Table: \\192.168.64.12\icardu\RDUCAD\Plotting\Pen Tables\ICE\_NC\_S\Struct.tbl  
 Print Driver: \\192.168.64.12\icardu\RDUCAD\Plotting\NGD0T\22x34\_PDF-ICE.plt  
 User: jim.austin  
 File: R:\Projects\19-77 Division 6 On Call\02 US 701 over Cape Fear River\NC00T\Structures\DWGs\Final\401-072\_US\_701\_SWL\_EBI\_06.dgn  
 Plot Date: 8/11/2020 10:09:31 PM  
 Plotter: R:\Projects\19-77 Division 6 On Call\02 US 701 over Cape Fear River\NC00T\Structures\DWGs\Final\401-072\_US\_701\_SWL\_EBI\_06.dgn