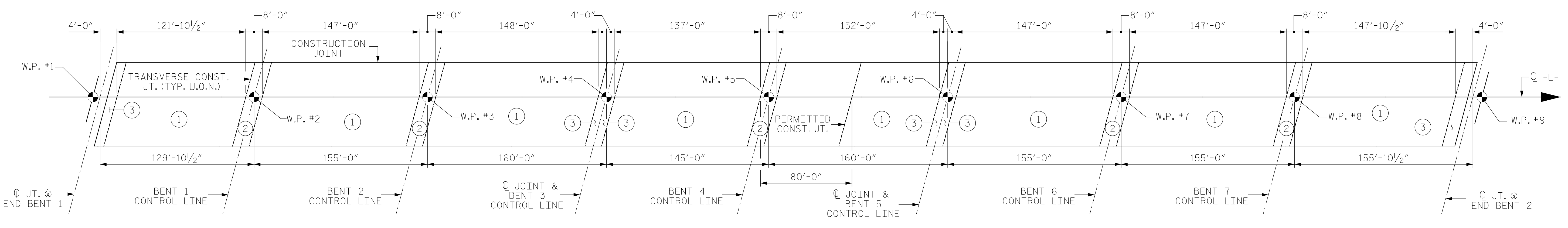


### POUR SEQUENCE - STAGE I

⊕ DENOTES POUR NUMBER AND DIRECTION  
 ALL DIMENSIONS ARE ALONG C -L-



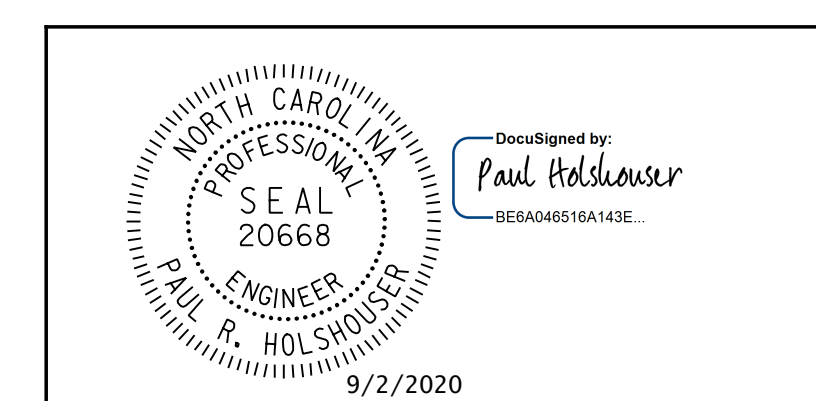
### OPTIONAL POUR SEQUENCE - STAGE I

⊕ DENOTES POUR NUMBER  
 ALL DIMENSIONS ARE ALONG C -L-  
 U.O.N. - DENOTES UNLESS OTHERWISE NOTED

PROJECT NO. 48793.3.1  
BLADEN COUNTY  
 STATION: 118+81.78 -L-

SHEET 1 OF 2

STATE OF NORTH CAROLINA  
 DEPARTMENT OF TRANSPORTATION  
 RALEIGH  
 SUPERSTRUCTURE  
 POURING SEQUENCE  
 STAGE I CONSTRUCTION



ICE of Carolinas, PLLC  
 4505 Falls of Neuse Road, Suite 110  
 Raleigh, North Carolina 27609  
 Phone: 919-822-0333  
 License #: P-0999

REVISIONS						SHEET NO.
NO.	BY:	DATE:	NO.	BY:	DATE:	S-65
1			3			TOTAL SHEETS
2			4			107

DOCUMENT NOT CONSIDERED FINAL  
 UNLESS ALL SIGNATURES COMPLETED

Pen Table: \\192.168.64.12\icardu\RDUCAD\Plotting\Pen Tables\ICE\_NC\_Struct.tbl  
 Print Driver: \\192.168.64.12\icardu\RDUCAD\Plotting\NGD0T\22x34\_PDF\_ICE.pltcfq  
 User: jmaustn  
 File: R:\Projects\19-77 Division 6 On Call\02 US 701 over Cape Fear River\NC00T\Structures\Dwg\Final\401\_065\_US\_701\_SML\_BOM\_03.dgn  
 Plot Date: 9/2/2020 2:15:07 PM

DRAWN BY : B. J. MANTEI DATE : 7-22-20  
 CHECKED BY : N. D'AIUTO DATE : 7-22-20  
 DESIGN E.O.R. : P. R. HOLSHOUSER DATE : 7-23-20