

Pen Table: \\192.168.64.12\icerdu\RDUCAD\Plotting\Pen Tables\ICE\_NC\_S\Struct.tbl  
 Print Driver: \\192.168.64.12\icerdu\RDUCAD\Plotting\NGD0T\22x34\_PDF\_ICE.pltcfq  
 User name: jmaustn  
 File name: R:\Projects\19-77 Division 6 On Call\02 US 701 over Cape Fear River\NC00T\Structures\Dwg\Final\401\_064\_US\_701\_SML\_BOM\_02.dgn  
 Plot Date: 8/11/2020 10:09:14 PM  
 Plot Time: 8/11/2020 10:09:14 PM

REINFORCING BAR SCHEDULE - STAGE II											
BAR NO.	SIZE	TYPE	LENGTH	WEIGHT	BAR NO.	SIZE	TYPE	LENGTH	WEIGHT		
* A3	2215	5	STR	22' - 4"	51,595	K14	36	6	STR	3' - 3"	176
A4	2215	5	STR	22' - 4"	51,595	K15	12	8	1	13' - 0"	417
* A301	12	5	STR	15' - 11"	199	K16	35	4	4	8' - 11"	208
* A302	12	5	STR	11' - 10"	148	K17	70	4	4	9' - 8"	452
* A303	12	5	STR	7' - 9"	97	K18	35	4	3	4' - 11"	115
* A304	12	5	STR	3' - 9"	47	K19	80	4	STR	6' - 9"	361
A401	12	5	STR	15' - 11"	199	K20	40	4	STR	5' - 2"	138
A402	12	5	STR	11' - 10"	148	K21	40	4	STR	5' - 3"	140
A403	12	5	STR	7' - 9"	97	K22	20	4	STR	3' - 9"	50
A404	12	5	STR	3' - 9"	47	K23	10	4	STR	1' - 4"	9
						K24	20	4	STR	2' - 11"	39
* B1	38	5	STR	41' - 7"	1,648	* S1	60	5	5	5' - 9"	360
* B2	38	5	STR	55' - 4"	2,193	* S2	60	4	6	5' - 2"	207
* B3	76	5	STR	55' - 10"	4,426	S3	30	4	7	12' - 11"	259
* B4	38	5	STR	49' - 1"	1,945	S4	450	4	8	2' - 9"	827
* B5	38	5	STR	54' - 1"	2,144	U1	50	4	9	15' - 8"	523
* B6	38	5	STR	53' - 9"	2,130	* EPOXY COATED				LBS.	117,721
* B7	285	6	STR	36' - 9"	15,732	REINFORCING STEEL					
* B8	240	6	STR	50' - 1"	18,054	REINFORCING STEEL				LBS.	96,569
B9	152	5	STR	57' - 4"	9,089	CONCRETE BREAKDOWN					
B10	40	5	STR	47' - 3"	1,971						
B11	114	5	STR	52' - 6"	6,242	CLASS AA CONCRETE					
B12	152	5	STR	60' - 0"	9,512						
* B13	36	4	STR	38' - 10"	934	UNIT 1 UNIT 2 UNIT 3 TOTAL					
* B14	24	4	STR	39' - 9"	637						
* B15	39	4	STR	37' - 7"	979	POUR #1	70.6	86.5	87.6	C.Y.	244.7
* D1	2241	5	STR	5' - 4"	12,466	POUR #2	102.0	110.7	104.0	C.Y.	316.7
D2	2241	5	STR	5' - 4"	12,466	POUR #3	109.2	108.8	108.8	C.Y.	218.0
* G2	6	5	STR	23' - 6"	147	POUR #4	2.5	2.5	2.5	C.Y.	7.5
* G3	815	4	STR	3' - 0"	1,633	POUR #5	97.1	70.5	104.4	C.Y.	272.0
K11	12	8	2	10' - 4"	331	MEDIAN **				C.Y.	66.7
K12	18	6	STR	1' - 8"	45	TOTAL				C.Y.	1,125.6
K13	36	8	1	11' - 7"	1,113	** QUANTITIES FOR MEDIAN ON APPROACH SLABS NOT INCLUDED.					

SUPERSTRUCTURE REINFORCING STEEL LENGTHS ARE BASED ON THE FOLLOWING MINIMUM SPLICE LENGTHS

BAR SIZE	SUPERSTRUCTURE EXCEPT APPROACH SLABS, PARAPETS, AND BARRIER RAILS		APPROACH SLABS		PARAPETS AND BARRIER RAILS
	EPOXY COATED	UNCOATED	EPOXY COATED	UNCOATED	
#4	1'-11"	1'-7"	1'-11"	1'-7"	2'-6"
#5	2'-5"	2'-0"	2'-5"	2'-0"	3'-1"
#6	2'-10"	2'-5"	3'-7"	2'-5"	3'-8"
#7	4'-2"	2'-9"			
#8	4'-9"	3'-2"			

UNIT 1	UNIT 2	UNIT 3	TOTAL
POUR #1	70.6	86.5	87.6
POUR #2	102.0	110.7	104.0
POUR #3	109.2	108.8	108.8
POUR #4	2.5	2.5	2.5
POUR #5	97.1	70.5	104.4
MEDIAN **			
TOTAL			C.Y. 1,125.6

—SUPERSTRUCTURE BILL OF MATERIAL—  
STAGE II CONSTRUCTION

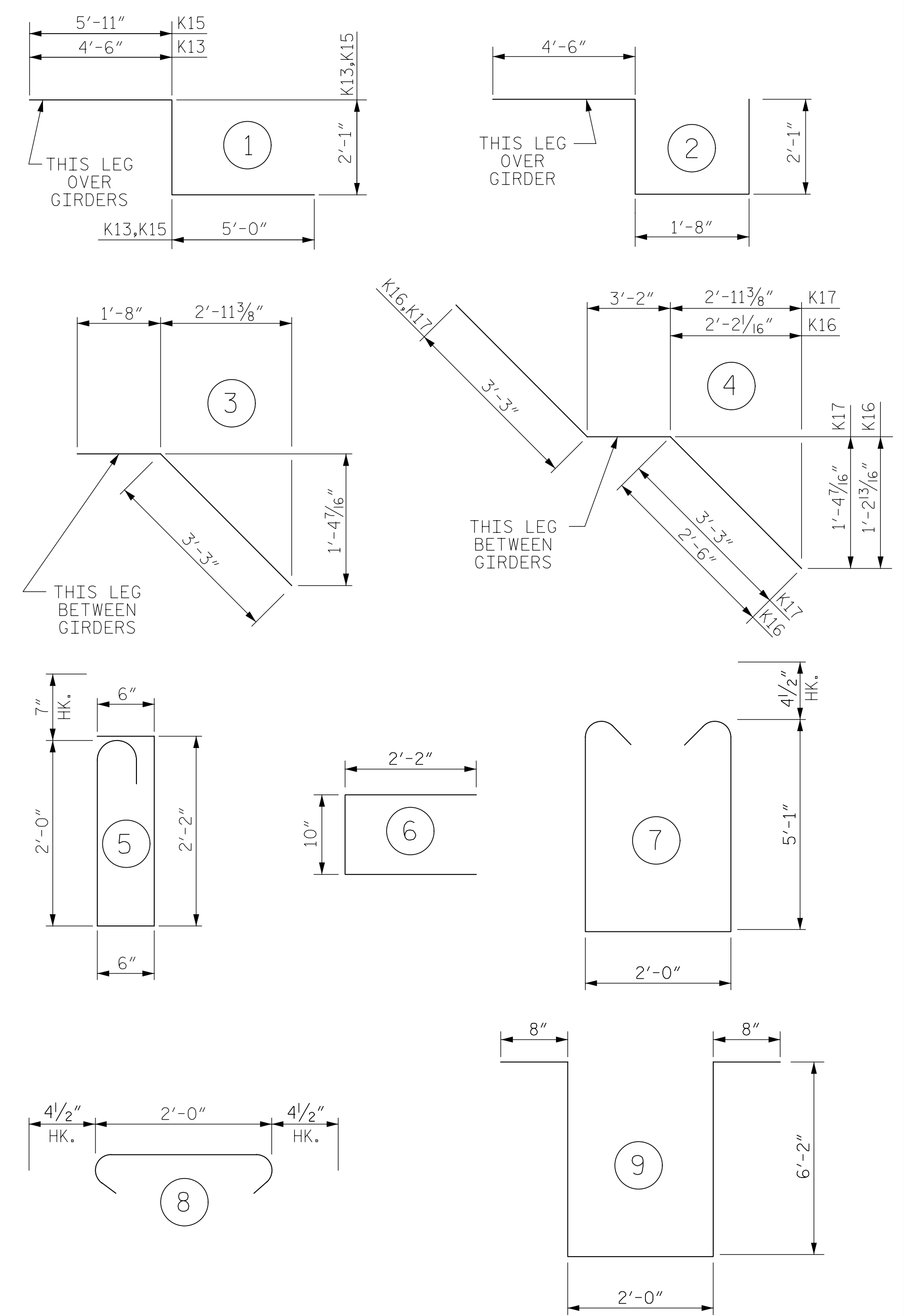
	CLASS AA CONCRETE (CU. YDS.)	REINFORCING STEEL (LBS.)	EPOXY COATED REINFORCING STEEL (LBS.)
UNIT 1	381.4		
UNIT 2	270.2		
UNIT 3	407.3		
MEDIAN	66.7		
TOTALS**	1,125.6	96,569	117,721

\*\* QUANTITIES FOR BARRIER RAIL ARE NOT INCLUDED

GROOVING BRIDGE FLOORS  
STAGE II CONSTRUCTION

APPROACH SLABS	954	SQ.FT.
BRIDGE DECK	24,162	SQ.FT.
TOTAL	25,116	SQ.FT.

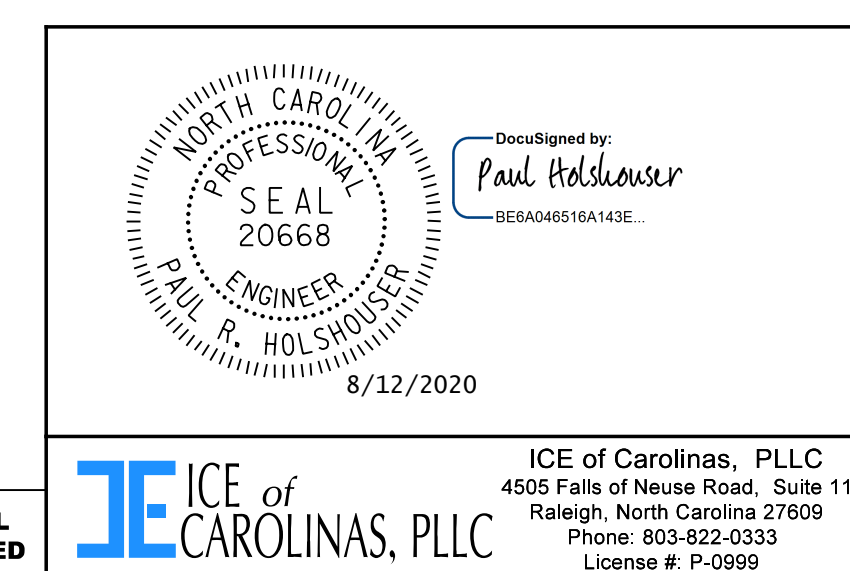
BAR TYPES



ALL BAR DIMENSIONS ARE OUT TO OUT.

PROJECT NO. 48793.3.1  
BLADEN COUNTY  
 STATION: 118+81.78 -L-

SHEET 2 OF 2



STATE OF NORTH CAROLINA DEPARTMENT OF TRANSPORTATION RALEIGH					
SUPERSTRUCTURE BILL OF MATERIAL STAGE II CONSTRUCTION					
REVISIONS					
NO.	BY:	DATE:	NO.	BY:	DATE:
1			3		
2			4		

DRAWN BY : J. N. AUSTIN DATE : 8-5-20  
 CHECKED BY : N. D'AIUTO DATE : 8-6-20  
 DESIGN E.O.R. : P. R. HOLSHOUSER DATE : 7-23-20

DOCUMENT NOT CONSIDERED FINAL  
UNLESS ALL SIGNATURES COMPLETED



SHEET NO. S-64  
TOTAL SHEETS 107