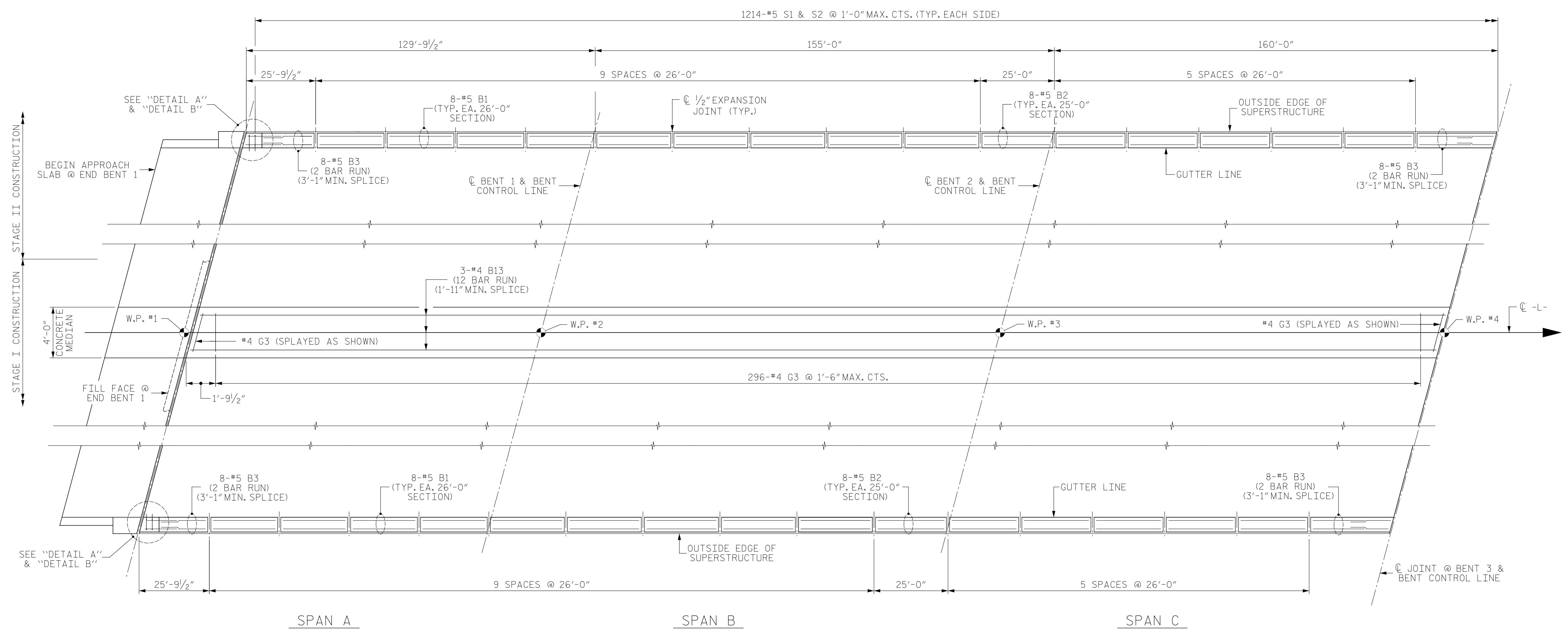
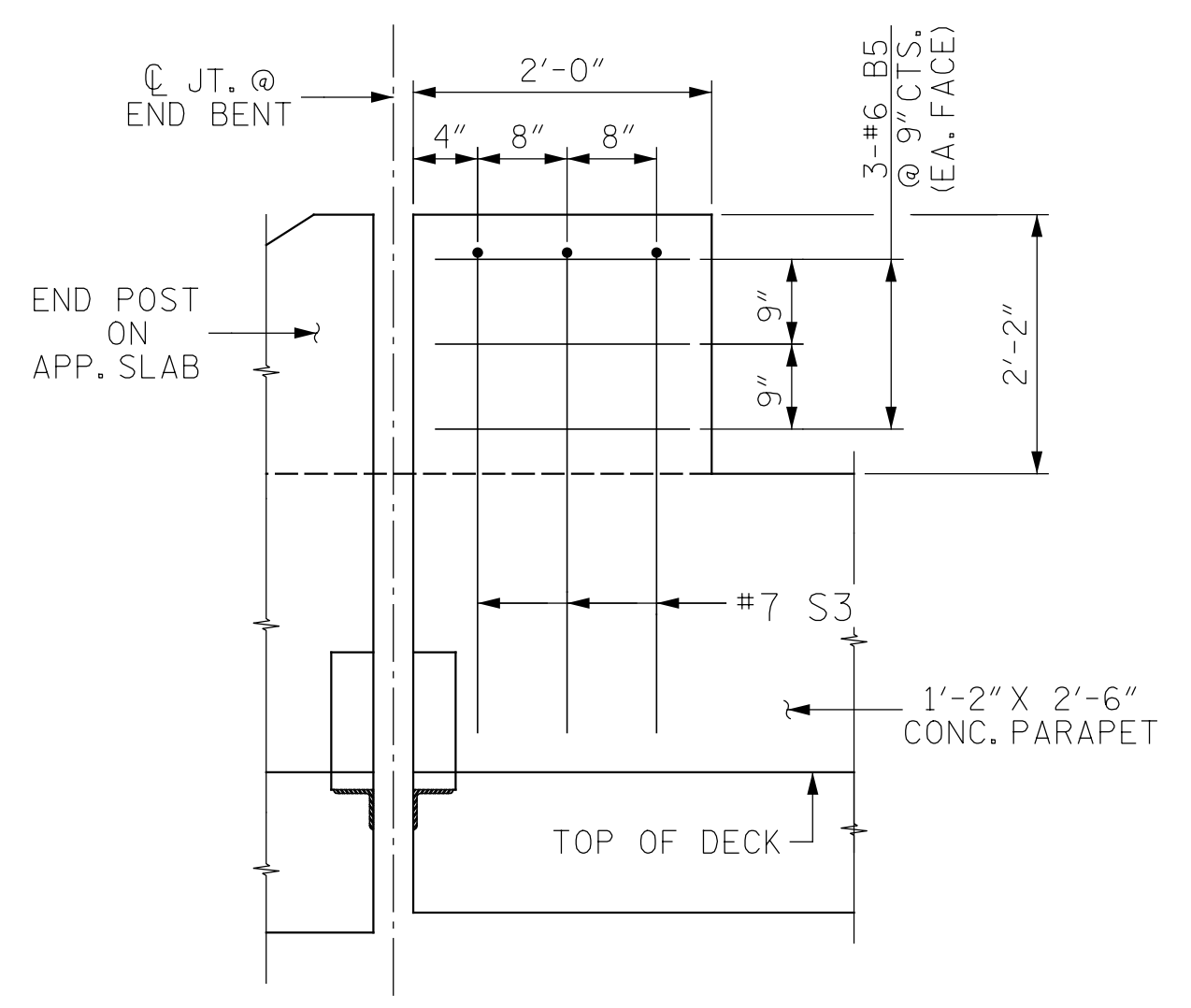


Pen Table: \\192.168.64.12\ice\rd\RDUCAD\Plotting\Pen Tables\ICE_NC_Struct.tbl
 Print Driver: \\192.168.64.12\ice\rd\RDUCAD\Plotting\NGD0T\22x34_PDF-ICE.plt
 User: jmausth
 File: R:\Projects\19-77 Division 6 On Call\02 US 701 over Cape Fear River\NC00T\Structures\Dwg\Final\401_050_US_701_SML_BR_01.dgn
 Plot Date: 8/11/2020 10:08:50 PM
 Plot Path: R:\Projects\19-77 Division 6 On Call\02 US 701 over Cape Fear River\NC00T\Structures\Dwg\Final\401_050_US_701_SML_BR_01.dgn

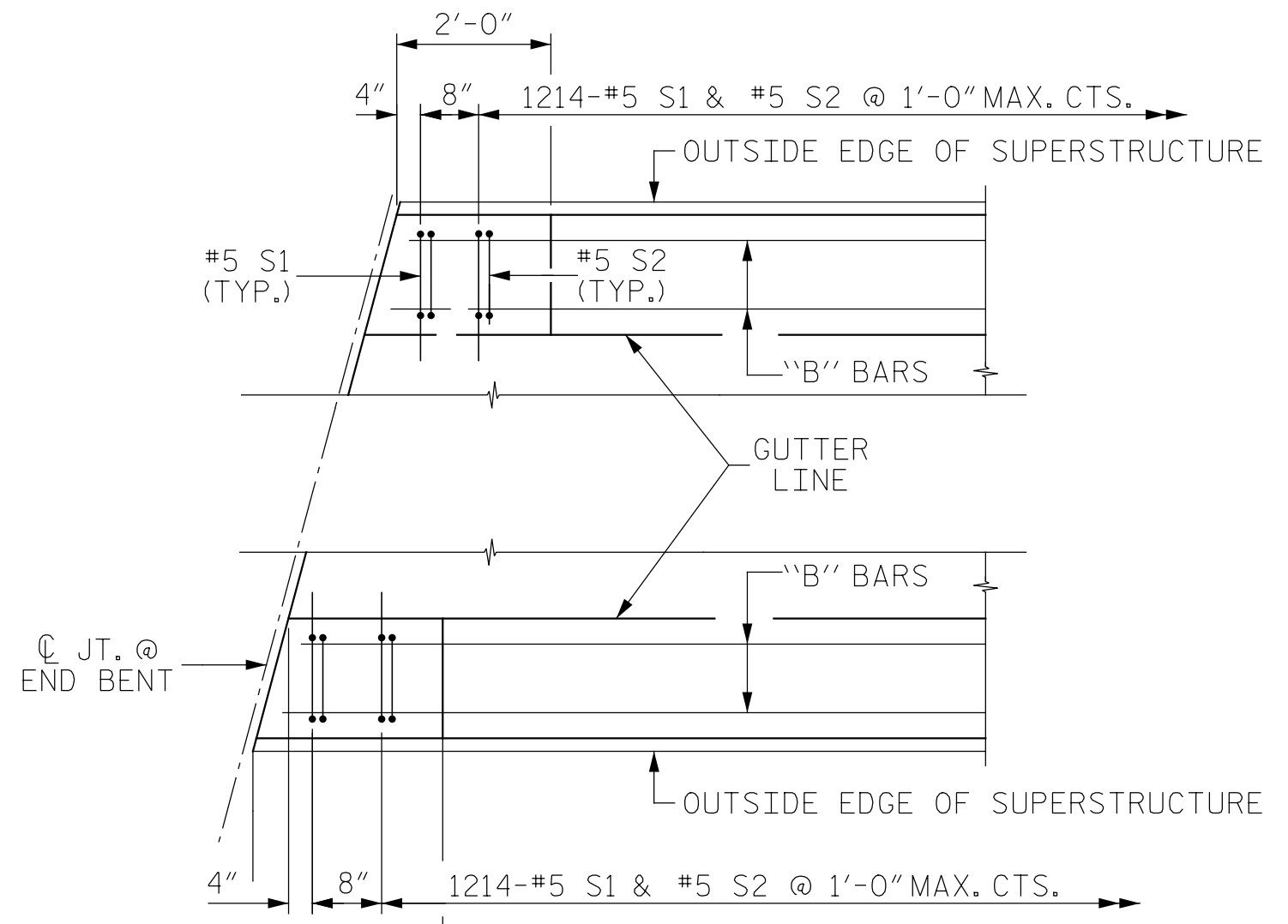


UNIT 1 - PLAN OF CONCRETE PARAPET & MEDIAN



DETAIL A

TYP. EA. END BARS IN 1'-2" X 2'-6" CONC. PARAPET NOT SHOWN FOR CLARITY



DETAIL B

END BENT 1 SHOWN, END BENT 2 SIMILAR

DRAWN BY: J. R. ADLER DATE: 7-22-20
 CHECKED BY: P. R. HOLSHOUSER DATE: 7-22-20
 DESIGN E.O.R.: P. R. HOLSHOUSER DATE: 7-23-20

DOCUMENT NOT CONSIDERED FINAL UNLESS ALL SIGNATURES COMPLETED

NORTH CAROLINA PROFESSIONAL SEAL 20668
 PAUL R. HOLSHOUSER ENGINEER
 8/12/2020
 ICE of Carolinas, PLLC
 4505 Falls of Neuse Road, Suite 110
 Raleigh, North Carolina 27609
 Phone: 919-822-0333 License #: P-0999

PROJECT NO. 48793.3.1
 BLADEN COUNTY
 STATION: 118+81.78 -L-
 SHEET 1 OF 4

STATE OF NORTH CAROLINA DEPARTMENT OF TRANSPORTATION RALEIGH					
SUPERSTRUCTURE					
PLAN OF CONCRETE PARAPETS & MEDIAN					
UNIT 1					
REVISIONS					
NO.	BY:	DATE:	NO.	BY:	DATE:
1			3		
2			4		
SHEET NO. S-50					TOTAL SHEETS 107