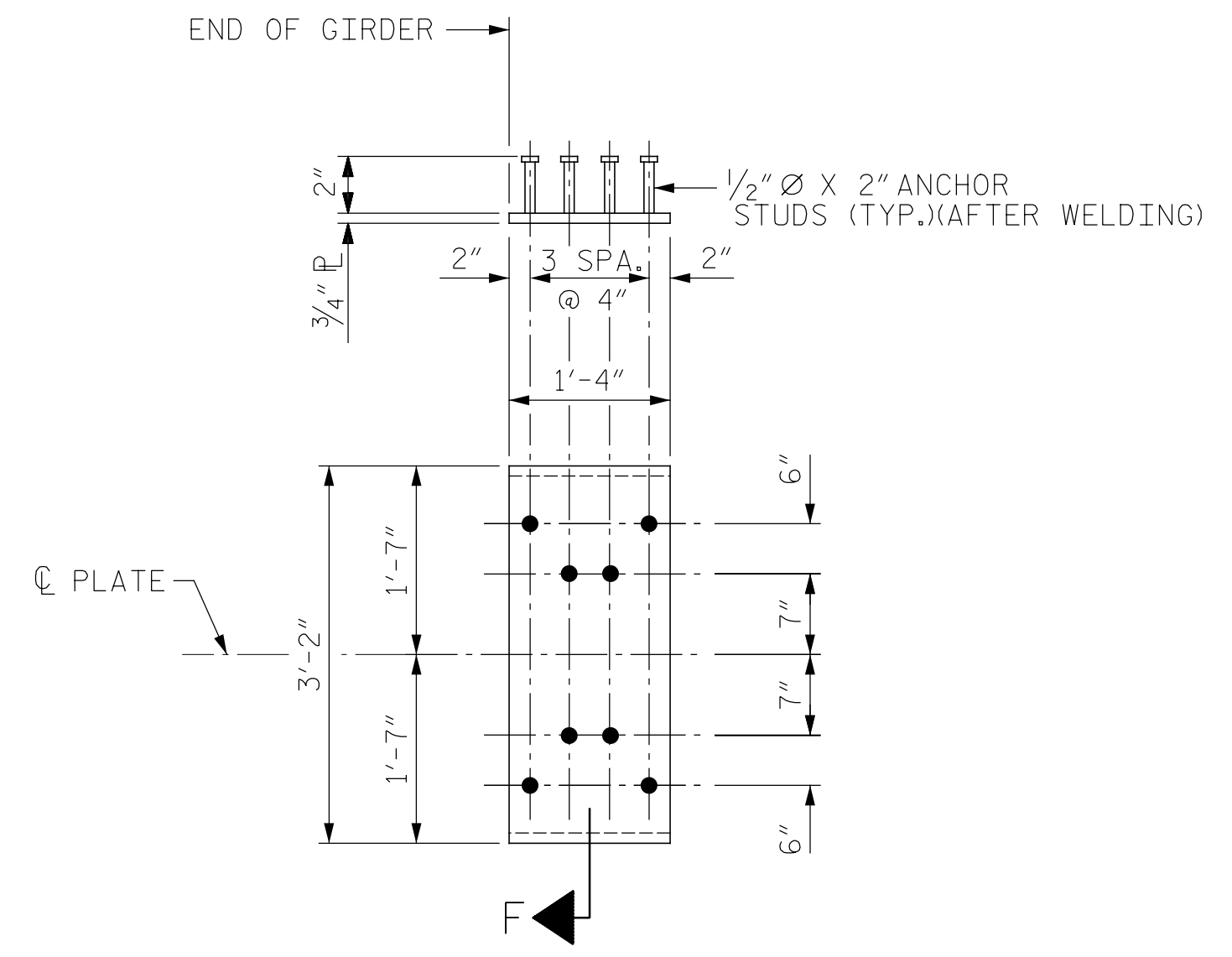
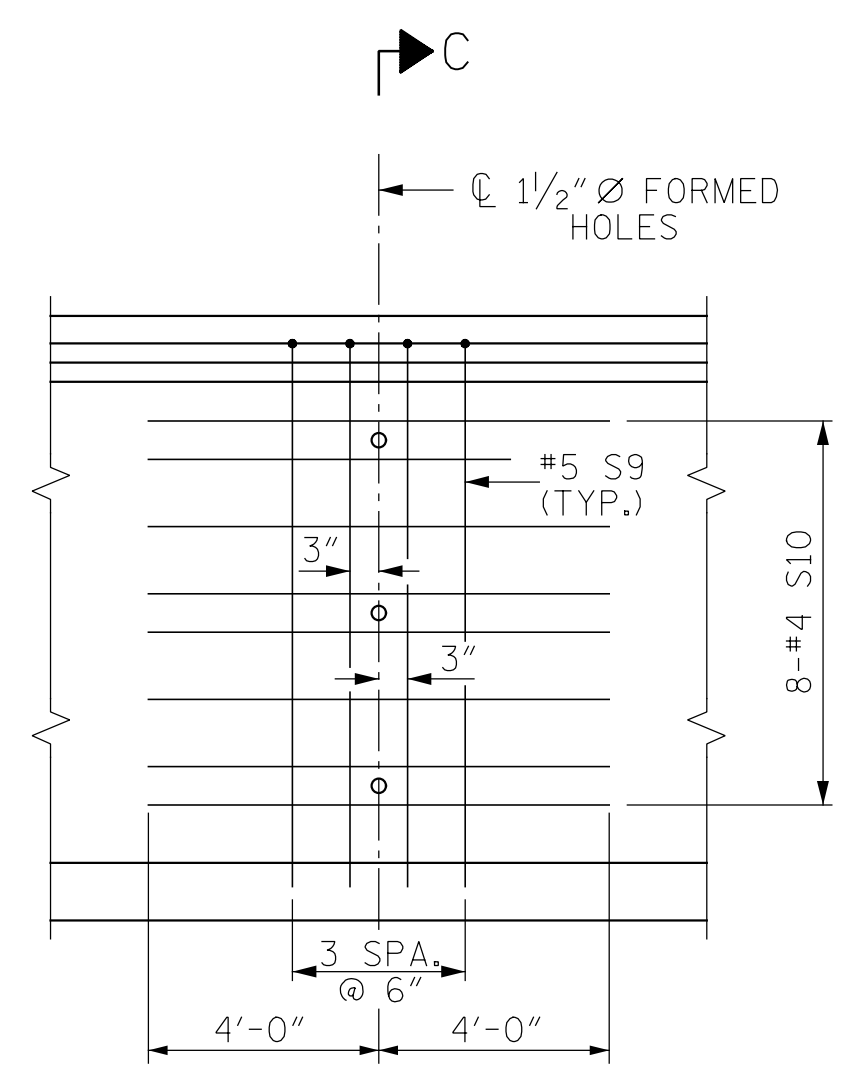


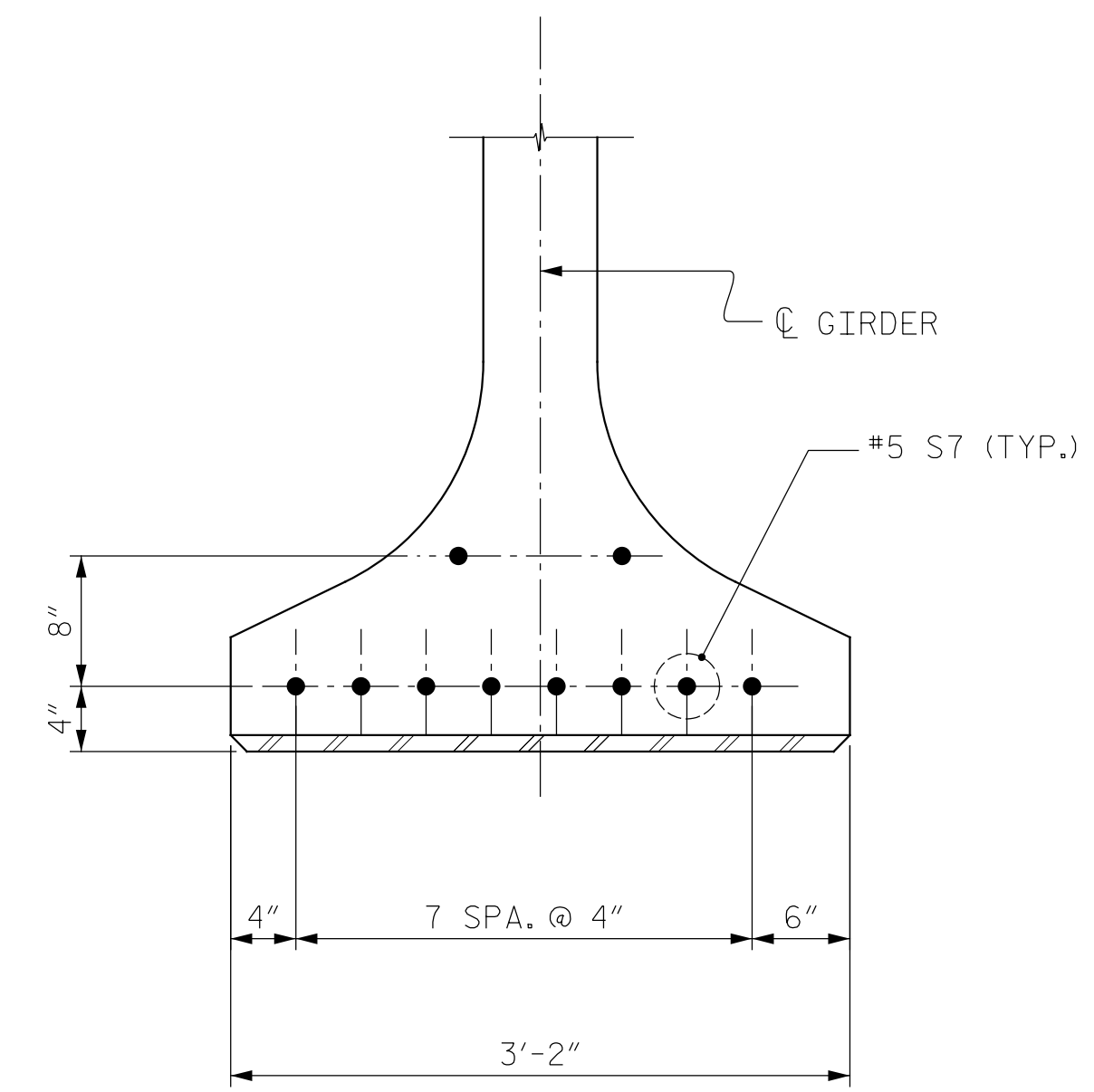
SECTION C-C  
(S2, S6 AND S8 BARS NOT SHOWN)



EMBEDDED PLATE "B-1" DETAILS  
(2 REQ'D PER GIRDER)



PARTIAL ELEVATION



DETAIL C

NOTES

ALL PRESTRESSING STRANDS SHALL BE 7-WIRE LOW-RELAXATION GRADE 270 STRANDS AND SHALL CONFORM TO AASHTO M203 EXCEPT FOR SAMPLING REQUIREMENTS WHICH SHALL BE IN ACCORDANCE WITH THE STANDARD SPECIFICATIONS.

ALL REINFORCING STEEL SHALL BE GRADE 60.

APPLY EPOXY PROTECTIVE COATING TO END OF GIRDER SURFACES INDICATED IN ELEVATION VIEW.

EMBEDDED PLATE "B-1" SHALL BE GALVANIZED IN ACCORDANCE WITH THE STANDARD SPECIFICATIONS.

ANCHOR STUDS SHALL CONFORM TO AASHTO M169 GRADES 1010 THROUGH 1020 OR APPROVED EQUAL, AND SHALL MEET THE TYPE "B" REQUIREMENTS OF SUBSECTION 7.3 OF THE ANSI/AASHTO/AWS D1.5 BRIDGE WELDING CODE.

AT ENDS OF GIRDERS TO BE EMBEDDED IN CONCRETE DIAPHRAGMS OR END WALLS, PRESTRESSING STRANDS MAY EXTEND A MAXIMUM OF 2" BEYOND THE GIRDER ENDS. OTHERWISE, PRESTRESSING STRANDS SHALL BE CUT FLUSH WITH THE GIRDER ENDS.

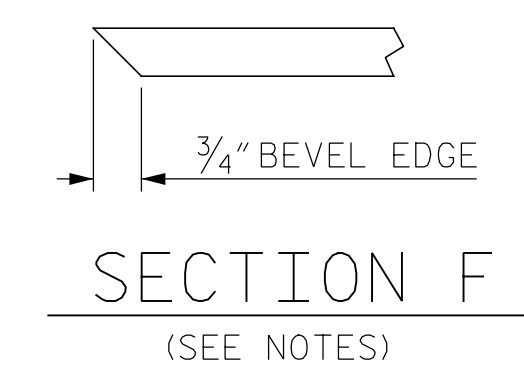
THE TRANSFER OF LOAD FROM THE ANCHORAGES TO THE GIRDER SHALL BE DONE WHEN CONCRETE HAS REACHED A COMPRESSIVE STRENGTH OF NOT LESS THAN 7,000 PSI.

DEPENDING ON THE TYPE OF SYSTEM USED TO SUPPORT THE DECK SLAB FORMS, PRESET ANCHORS MAY BE NECESSARY IN THE PRESTRESSED CONCRETE GIRDER.

THE TOP SURFACE OF THE GIRDER, EXCLUDING THE OUTSIDE 4", SHALL BE RAKED TO A DEPTH OF 1/4".

THE CONTRACTOR HAS THE OPTION TO PROVIDE, AT NO ADDITIONAL COST TO THE DEPARTMENT, 2 ADDITIONAL STRANDS AT THE TOP OF THE GIRDER TO FACILITATE TYING OF THE REINFORCING STEEL. THESE STRANDS SHALL BE PULLED TO A LOAD OF 4500 lbs.

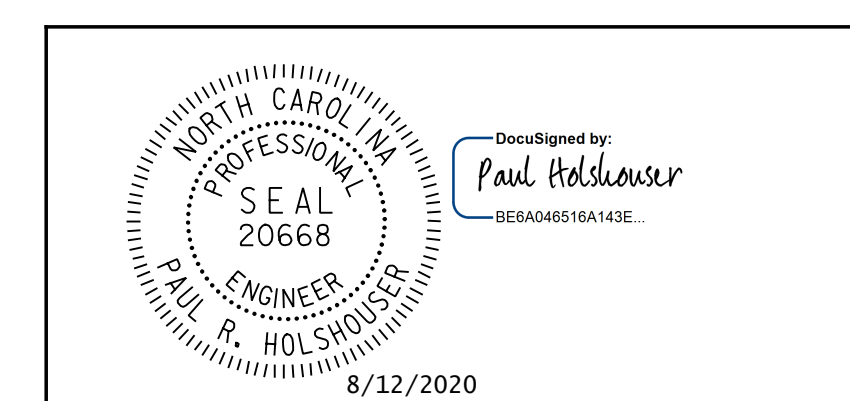
FOR 78" FLORIDA I-BEAM (FIB) GIRDERS, SEE SPECIAL PROVISIONS.



PROJECT NO. 48793.3.1  
BLADEN COUNTY  
STATION: 118+81.78 -L-

STATE OF NORTH CAROLINA  
DEPARTMENT OF TRANSPORTATION  
RALEIGH  
SUPERSTRUCTURE  
78" FLORIDA I-BEAM (FIB)  
PRESTRESSED CONCRETE GIRDER  
CONTINUOUS FOR LIVE LOAD  
DETAILS

REVISIONS						SHEET NO.
NO.	BY:	DATE:	NO.	BY:	DATE:	S-37
1			3			TOTAL SHEETS
2			4			107



ICE of Carolinas, PLLC  
4505 Falls of Neuse Road, Suite 110  
Raleigh, North Carolina 27609  
Phone: 919-822-0333  
License #: P-0999

DOCUMENT NOT CONSIDERED FINAL  
UNLESS ALL SIGNATURES COMPLETED

Pen Table: \\192.168.64.12\icardu\RDUCAD\Plotting\Pen Tables\ICE\_NC\_S\fruct.tbl  
Print Driver: \\192.168.64.12\icardu\RDUCAD\Plotting\NGD0T\22x34\_PDF\_ICE.plt  
User: jim.austin  
File: R:\Projects\19-77 Division 6 On Call\02 US 701 over Cape Fear River\NC00T\Structures\Dwg\Final\401\_037\_US\_701\_SWL\_PCG\_DET\_02.dgn  
Plot Date: 8/11/2020 10:08:25 PM

DRAWN BY: J. N. AUSTIN DATE: 6-12-20  
CHECKED BY: K. C. SAMUDRALA DATE: 7-14-20  
DESIGN E.O.R.: P. R. HOLSHOUSER DATE: 7-23-20