

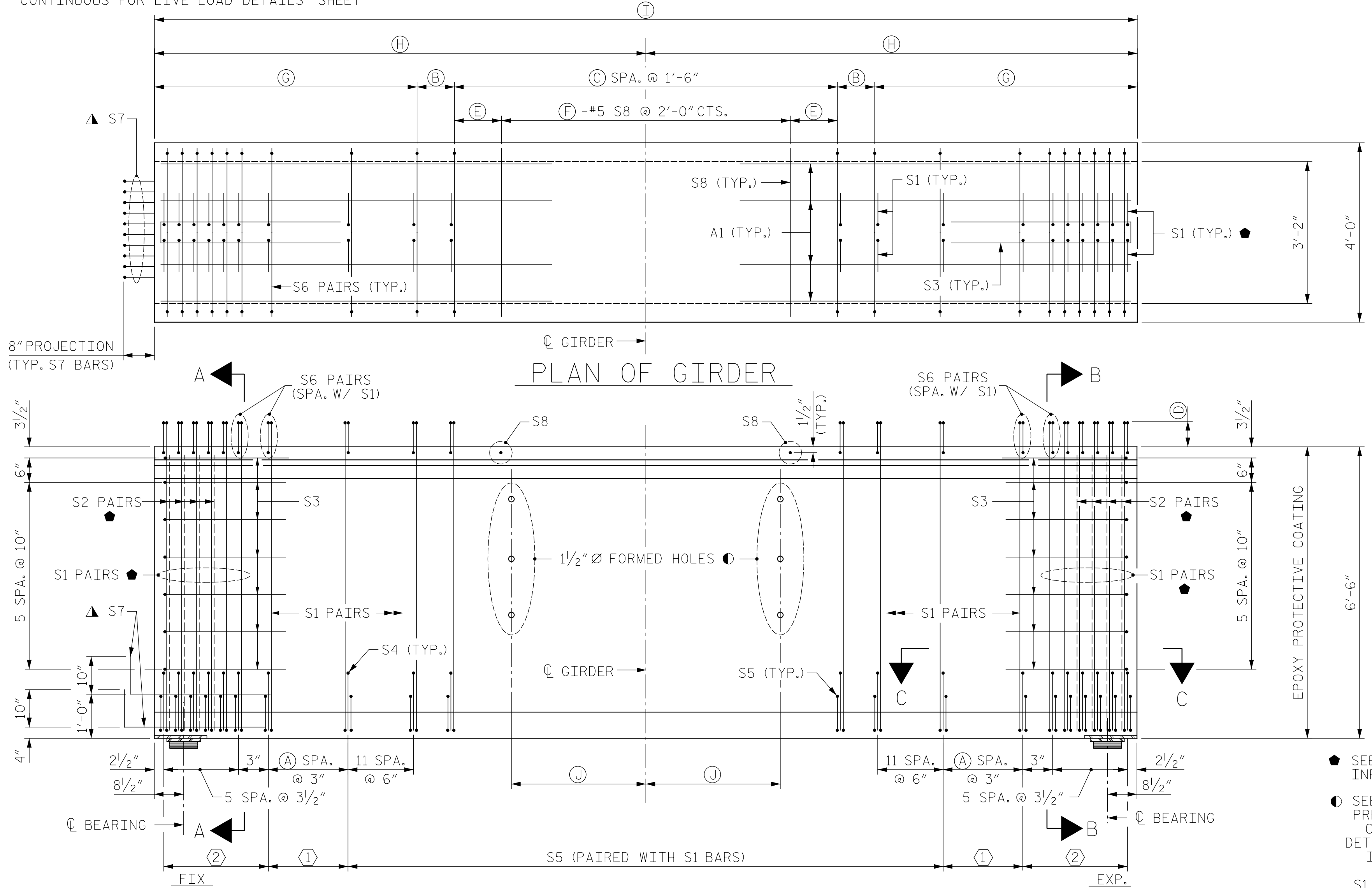
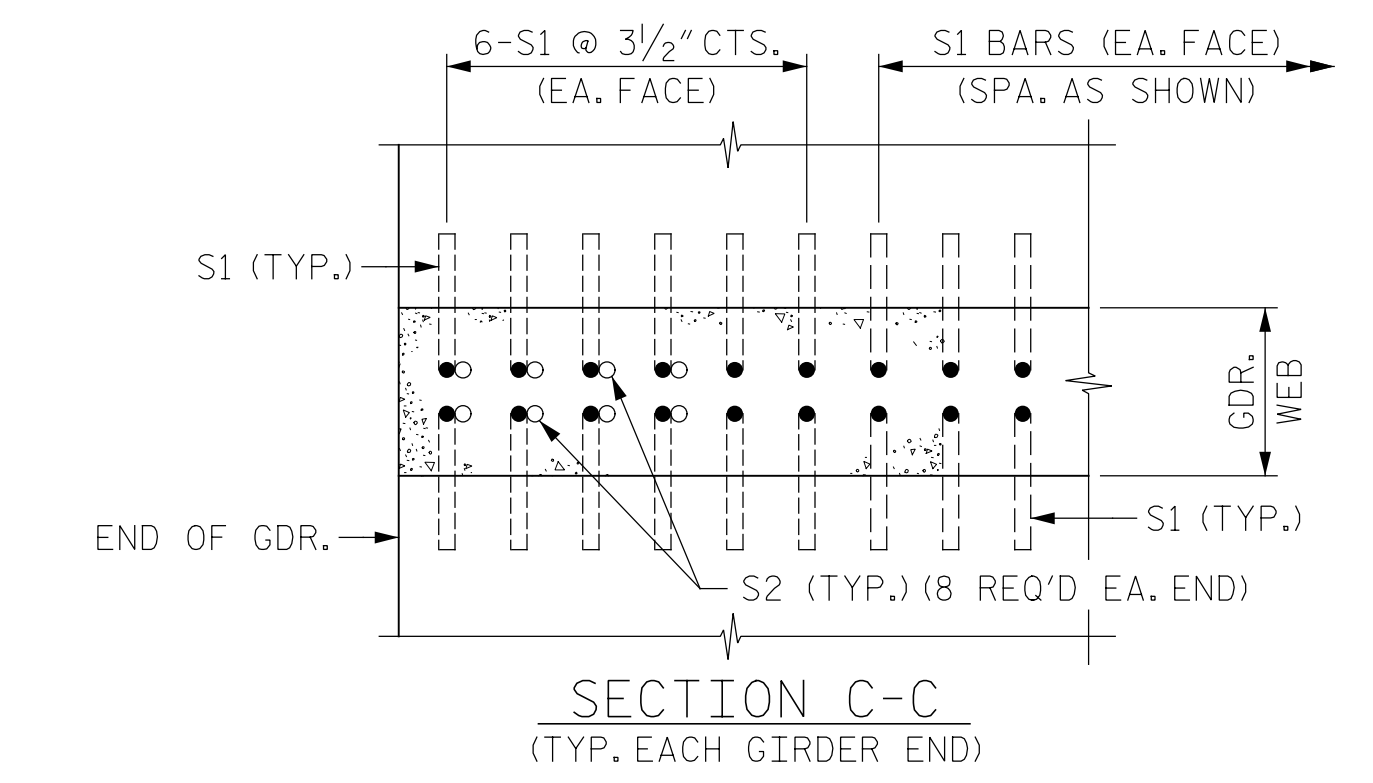
BAR TYPES		0.6" Ø L. R. GRADE 270 STRANDS	
AREA (SQUARE INCHES)	ULTIMATE STRENGTH (LBS. PER STRAND)	APPLIED PRESTRESS (LBS. PER STRAND)	
0.217	58,600	43,950	
REINFORCING STEEL FOR ONE GDR			
BAR NO.	SIZE	TYPE	LENGTH WEIGHT
A1	8	6	STR 28' - 0" 336
S1	348	5	1 7' - 9" 2,813
S2	16	5	STR 6' - 0" 100
S3	14	4	5 8' - 5" 79
S4	40	3	2 3' - 2" 48
S5	292	3	3 4' - 3" 467
S6	348	5	4 4' - 9" 1,724
▲ S7	10	5	STR 3' - 8" 38
S8	62	5	STR 3' - 8" 237
S9	8	5	6 12' - 6" 104
S10	16	4	STR 8' - 0" 86
QUANTITIES FOR ONE GIRDER			
REINFORCING STEEL	9000 PSI CONCRETE	0.6" Ø L.R. STRANDS	
	LB.	C.Y.	No.
GDR HGX	6,032	43.8	67
GIRDERS REQUIRED			
NUMBER	LENGTH	TOTAL LENGTH	
9	154'-7"	1,391'-3"	

▲ FOR S7 BARS, SEE "DETAIL C" ON "78" FLORIDA I-BEAM (FIB) PRESTRESSED CONCRETE GIRDER CONTINUOUS FOR LIVE LOAD DETAILS" SHEET

▲ NOTE: S7 BARS SHALL BE BENT BEFORE SHIPMENT. HEAT BENDING SHALL NOT BE ALLOWED.

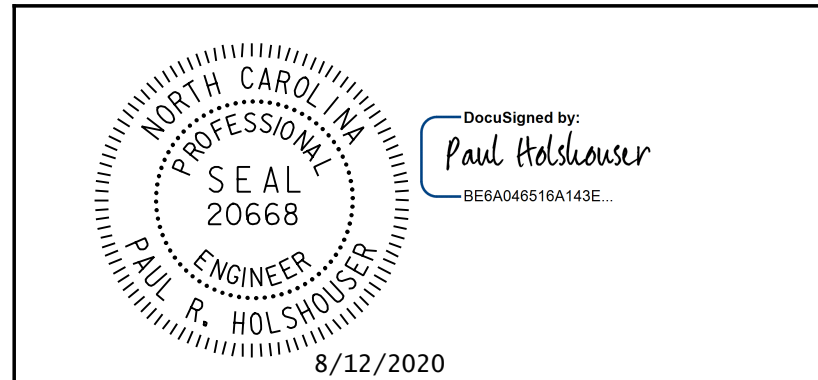
DEBONDING LEGEND	
●	FULLY BONDED STRANDS
▲	STRANDS DEBONDED FOR 4'-0" FROM END OF GIRDER
■	STRANDS DEBONDED FOR 6'-0" FROM END OF GIRDER
◻	STRANDS DEBONDED FOR 8'-0" FROM END OF GIRDER
◻	STRANDS DEBONDED FOR 14'-0" FROM END OF GIRDER

TABLE OF VARIABLES										
SPAN	A	B	C	D	E	F	G	H	I	J
H	27	10 1/2"	83	6"	1'-3"	62	14'-2"	77'-3 1/2"	154'-7"	25'-6"



● SEE "SECTION C-C" FOR MORE INFORMATION & DETAILS
 ○ SEE "78" FLORIDA I-BEAM (FIB) PRESTRESSED CONCRETE GIRDER CONTINUOUS FOR LIVE LOAD DETAILS" SHEET FOR ADDITIONAL INFORMATION AND DETAILS.

S1 & S6 BARS MAY BE SHIFTED AS FOUND NECESSARY TO CLEAR 1 1/2" Ø HOLES IN GIRDER WEB



PROJECT NO. 48793.3.1
 BLADEN COUNTY
 STATION: 118+81.78 -L-
 SHEET 8 OF 8

STATE OF NORTH CAROLINA
 DEPARTMENT OF TRANSPORTATION
 RALEIGH
 SUPERSTRUCTURE
 78" FLORIDA I-BEAM (FIB)
 SPAN H
 CONTINUOUS FOR LIVE LOAD
 PRESTRESSED CONCRETE GIRDER

REVISIONS						SHEET NO.
NO.	BY:	DATE:	NO.	BY:	DATE:	S-35
1			3			TOTAL SHEETS
2			4			107

DRAWN BY: B. J. MANTEI DATE: 7/16/20
 CHECKED BY: N. REZAEI DATE: 7/16/20
 DESIGN E.O.R.: P. R. HOLSHOUSER DATE: 7-23-20

DOCUMENT NOT CONSIDERED FINAL UNLESS ALL SIGNATURES COMPLETED

ICE of CAROLINAS, PLLC
 4505 Falls of Neuse Road, Suite 110
 Raleigh, North Carolina 27609
 Phone: 919-822-0333
 License # P-9999

Pen Table: \\192.168.64.12\ncerd\RDUCAD\Plotting\Pen Tables\ICE_NC_S\struct.tbl
 Print Driver: \\192.168.64.12\ncerd\RDUCAD\Plotting\NGD0T\22x34_PDF_ICC.plt
 User: jimmaustin
 File: R:\Projects\19-77 Division 6 On Call\02 US 701 over Cape Fear River\NCDDOT\Structures\Drawings\Final\401-035_US_701_SWL_PCG-H_01.dgn
 Plot Date: 8/11/2020 10:08:21 PM