

BAR TYPES

0.6" Ø L. R. GRADE 270 STRANDS

AREA (SQ. INCHES)	ULTIMATE STRENGTH (LBS. PER STRAND)	APPLIED PRESTRESS (LBS. PER STRAND)
0.217	58,600	43,950

REINFORCING STEEL FOR ONE GDR

BAR NO.	SIZE	TYPE	LENGTH	WEIGHT	
A1	8	6	STR	28' - 0"	336
S1	312	5	1	7' - 9"	2,522
S2	16	5	STR	6' - 0"	100
S3	14	4	5	8' - 5"	79
S4	40	3	2	3' - 2"	48
S5	256	3	3	4' - 3"	409
S6	312	5	4	4' - 9"	1,546
▲ S7	10	5	STR	3' - 8"	38
S8	49	5	STR	3' - 8"	187
S9	8	5	6	12' - 6"	104
S10	16	4	STR	8' - 0"	86

QUANTITIES FOR ONE GIRDER

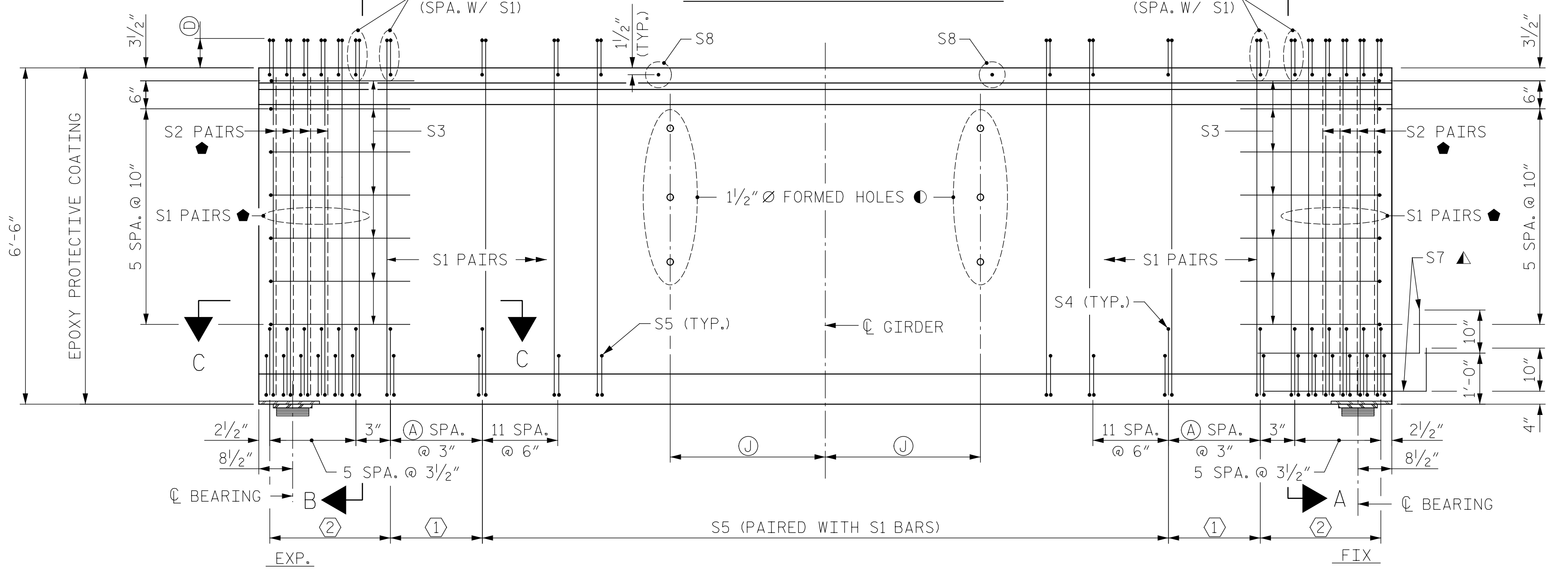
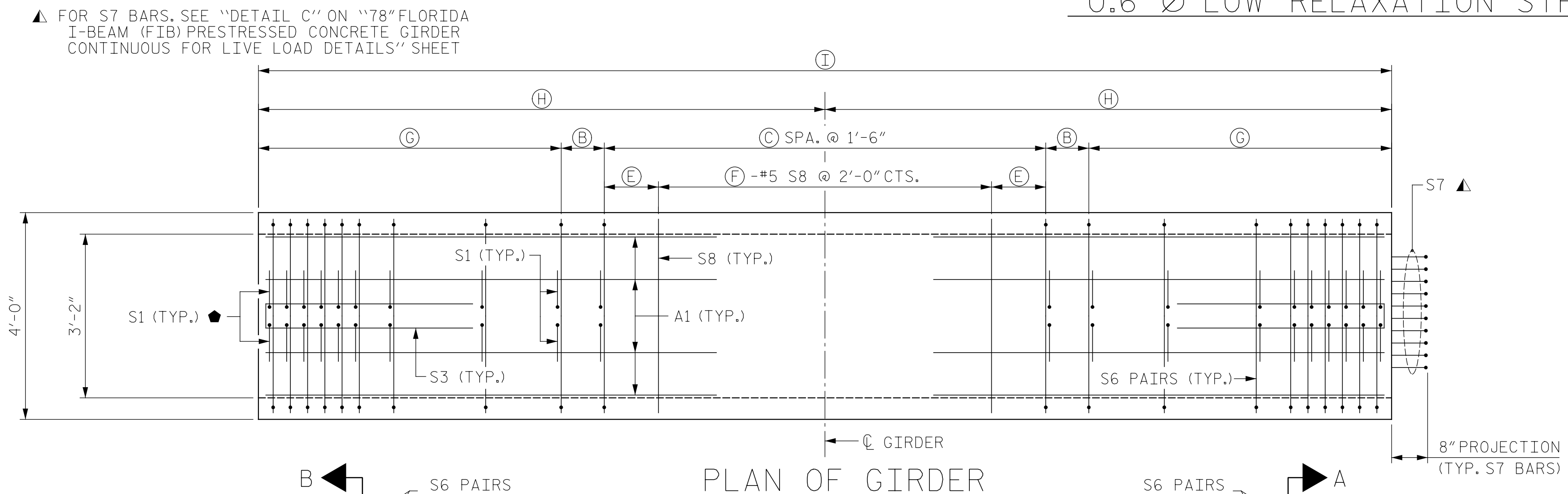
REINFORCING STEEL	9000 PSI CONCRETE	0.6" Ø L.R. STRANDS
	LB.	No.
GDR AGX	5,455	51

GIRDERS REQUIRED

NUMBER	LENGTH	TOTAL LENGTH
9	128'-7"	1,157'-3"

ALL BAR DIMENSIONS ARE OUT-TO-OUT

▲ NOTE: S7 BARS SHALL BE BENT BEFORE SHIPMENT. HEAT BENDING SHALL NOT BE ALLOWED.



DRAWN BY: B. J. MANTEI DATE: 7-16-20
 CHECKED BY: N. REZAEI DATE: 7-16-20
 DESIGN E.O.R.: P. R. HOLSHOUSER DATE: 7-23-20

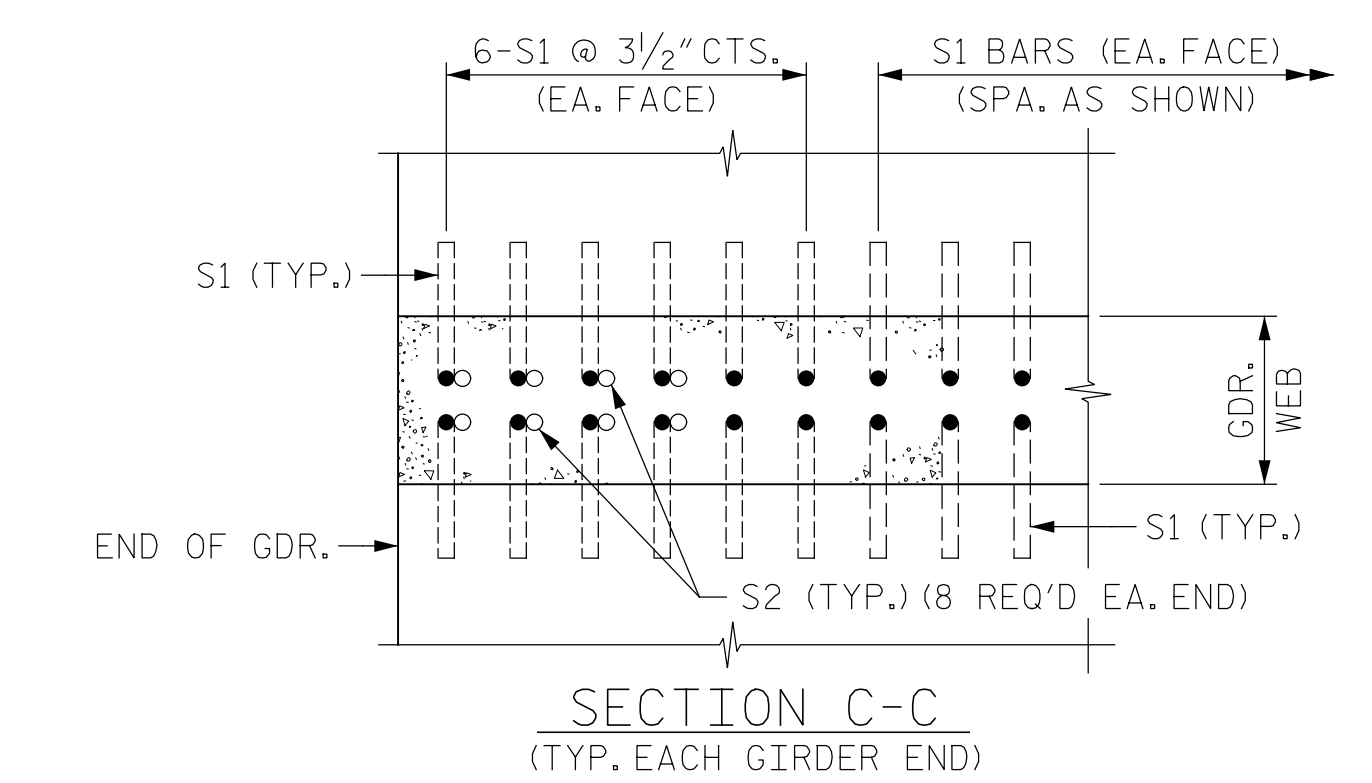
- ① 14-S4 & S5 PAIRS @ 6" CTS. (PAIRED WITH S1 BARS)
- ② S4 & S5 PAIRS (SPA. AS SHOWN) (PAIRED WITH S1 BARS)

DEBONDING LEGEND

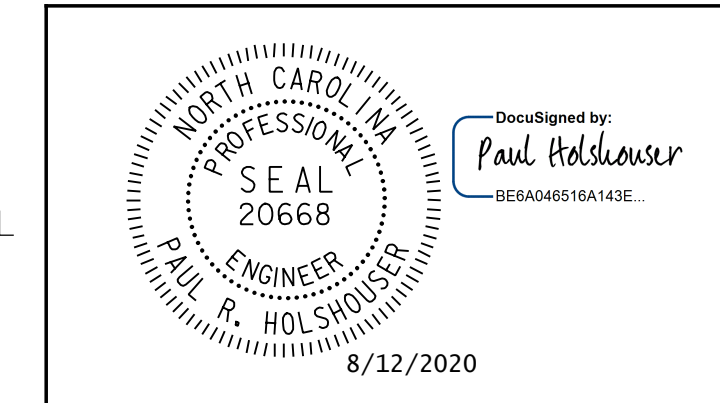
- FULLY BONDED STRANDS
- ▲ STRANDS DEBONDED FOR 4'-0" FROM END OF GIRDER
- STRANDS DEBONDED FOR 6'-0" FROM END OF GIRDER
- ◊ STRANDS DEBONDED FOR 8'-0" FROM END OF GIRDER
- ◈ STRANDS DEBONDED FOR 14'-0" FROM END OF GIRDER

TABLE OF VARIABLES

SPAN	A	B	C	D	E	F	G	H	I	J
A	27	1'-4 1/2"	65	6"	9"	49	14'-2"	64'-3 1/2"	128'-7"	21'-2"



- SEE "SECTION C-C" FOR MORE INFORMATION & DETAILS
 - SEE "78" FLORIDA I-BEAM (FIB) PRESTRESSED CONCRETE GIRDER CONTINUOUS FOR LIVE LOAD DETAILS" SHEET FOR ADDITIONAL INFORMATION AND DETAILS.
- S1 & S6 BARS MAY BE SHIFTED AS FOUND NECESSARY TO CLEAR 1/2" Ø HOLES IN GIRDER WEB



PROJECT NO. 48793.3.1
 BLADEN COUNTY
 STATION: 118+81.78 -L-
 SHEET 1 OF 8

STATE OF NORTH CAROLINA
 DEPARTMENT OF TRANSPORTATION
 RALEIGH

SUPERSTRUCTURE
 78" FLORIDA I-BEAM (FIB)
 SPAN A
 CONTINUOUS FOR LIVE LOAD
 PRESTRESSED CONCRETE GIRDER

REVISIONS

NO.	BY:	DATE:	NO.	BY:	DATE:
1			3		
2			4		

SHEET NO. S-28
 TOTAL SHEETS 107

DOCUMENT NOT CONSIDERED FINAL
 UNLESS ALL SIGNATURES COMPLETED



Pen Table: \\192.168.64.12\ncerd\RDUCAD\Plotting\Pen Tables\ICE_NC_Struct.tbl
 P:Print Driver: \\192.168.64.12\ncerd\RDUCAD\Plotting\NGD0T\22x34_PDF_ICE.plt
 User: jim.austin
 File: R:\Projects\19-77 Division 6 On Call\02 US 701 over Cape Fear River\NC00T\Structures\Drawings\Final\401-028_US_701_SWL_PCG_A_01.dgn
 Plot: 8/11/2020 10:08:09 PM
 PLOT HEAD: 8/11/2020 10:08:09 PM