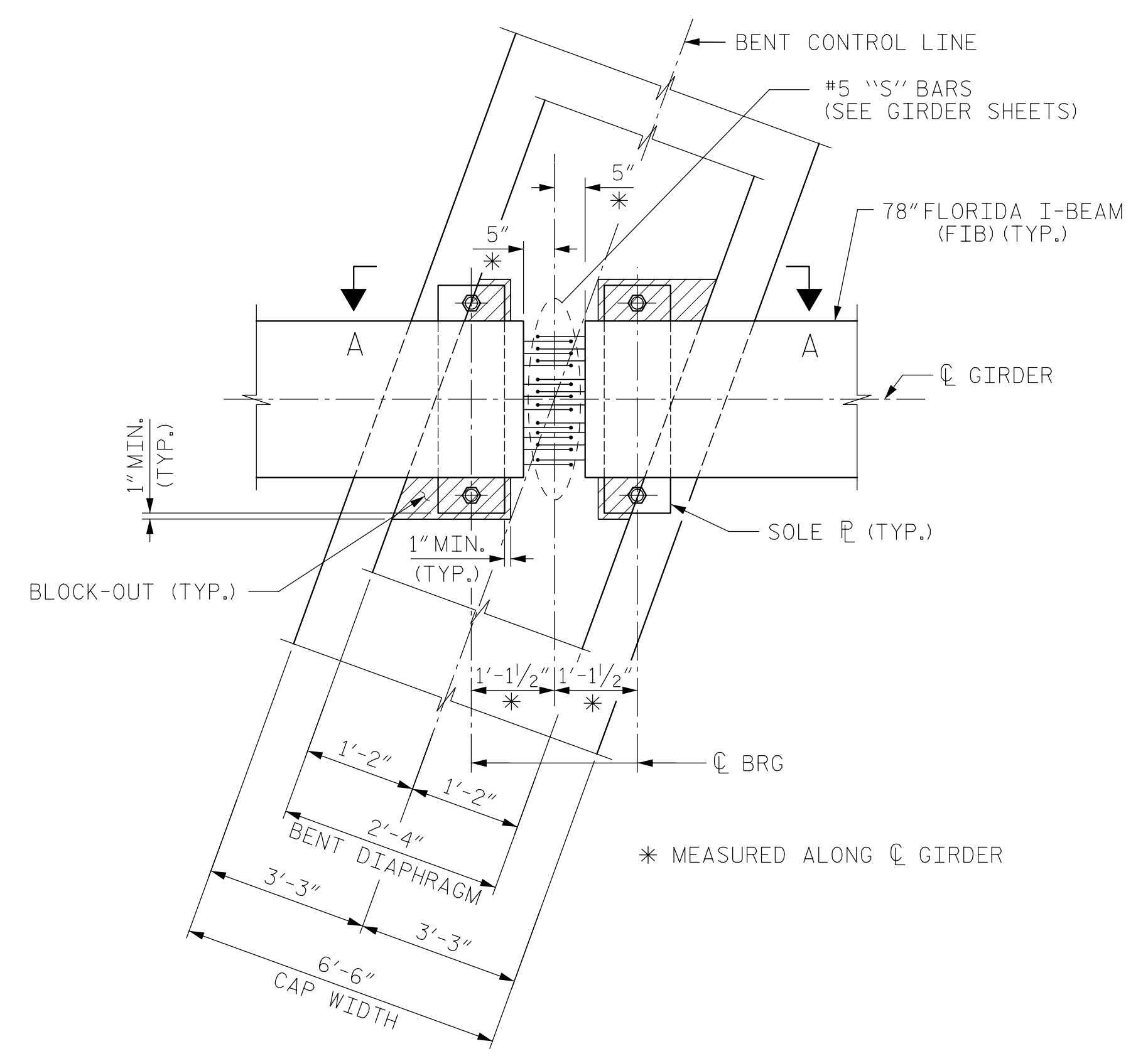
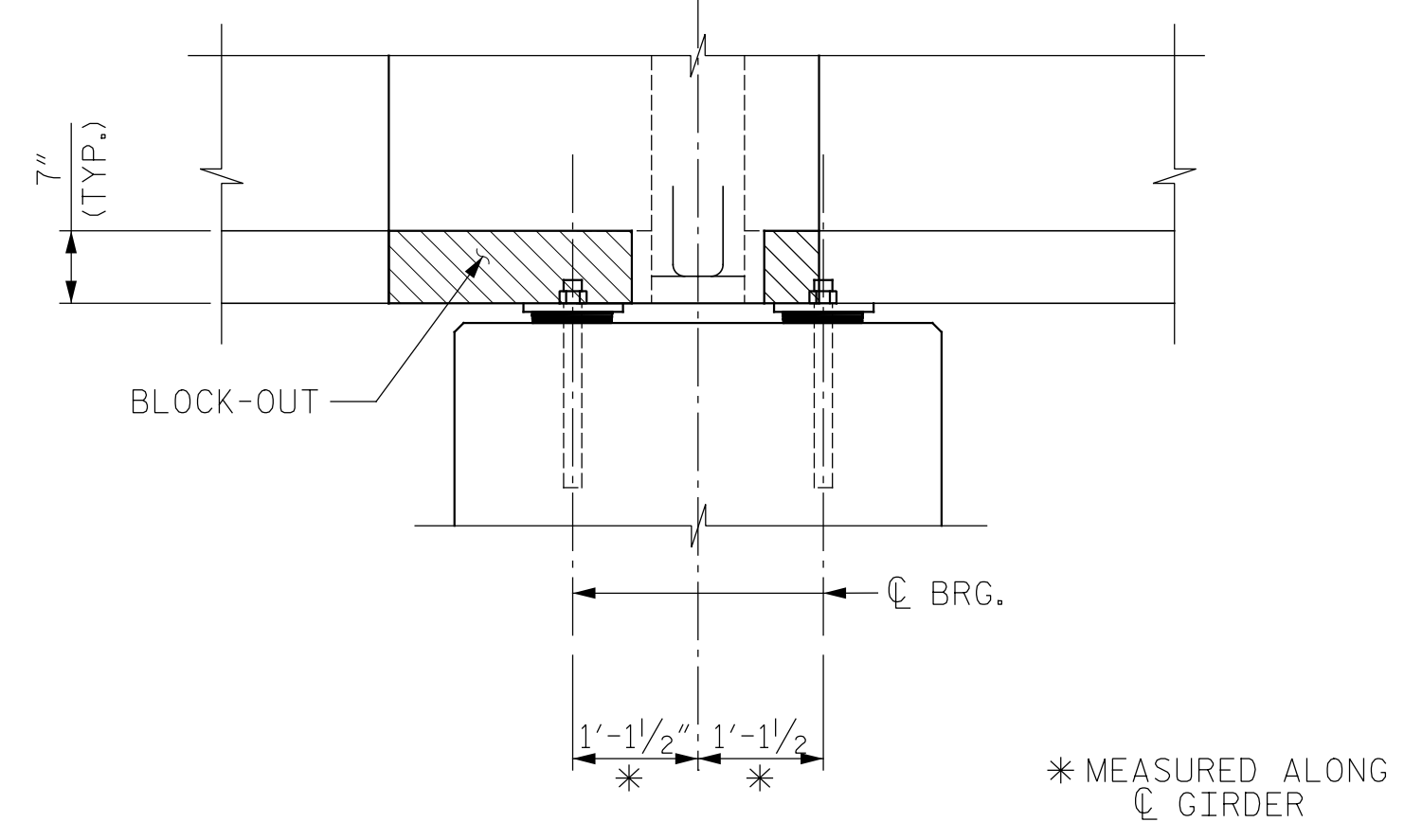


END VIEW

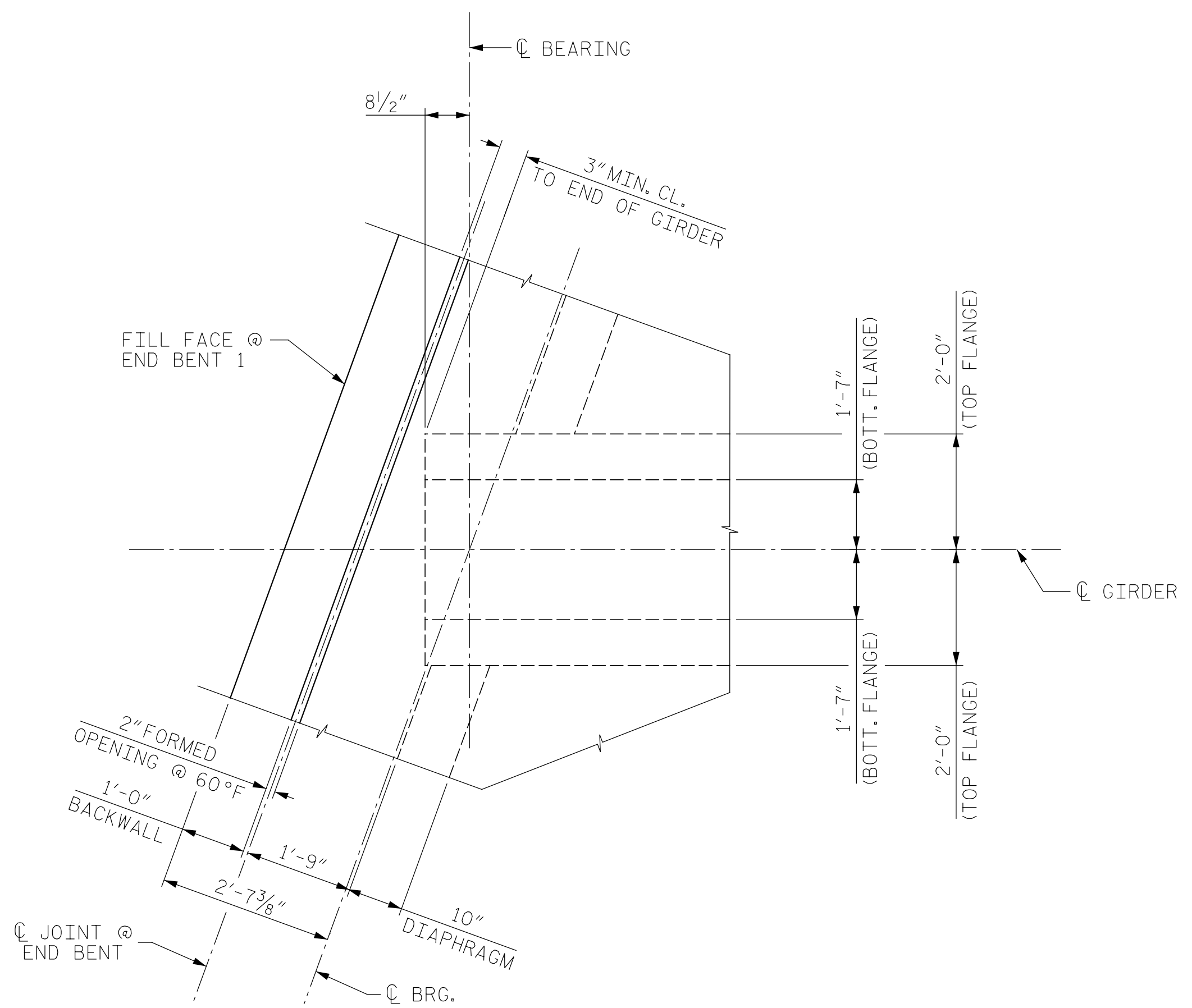


PLAN VIEW

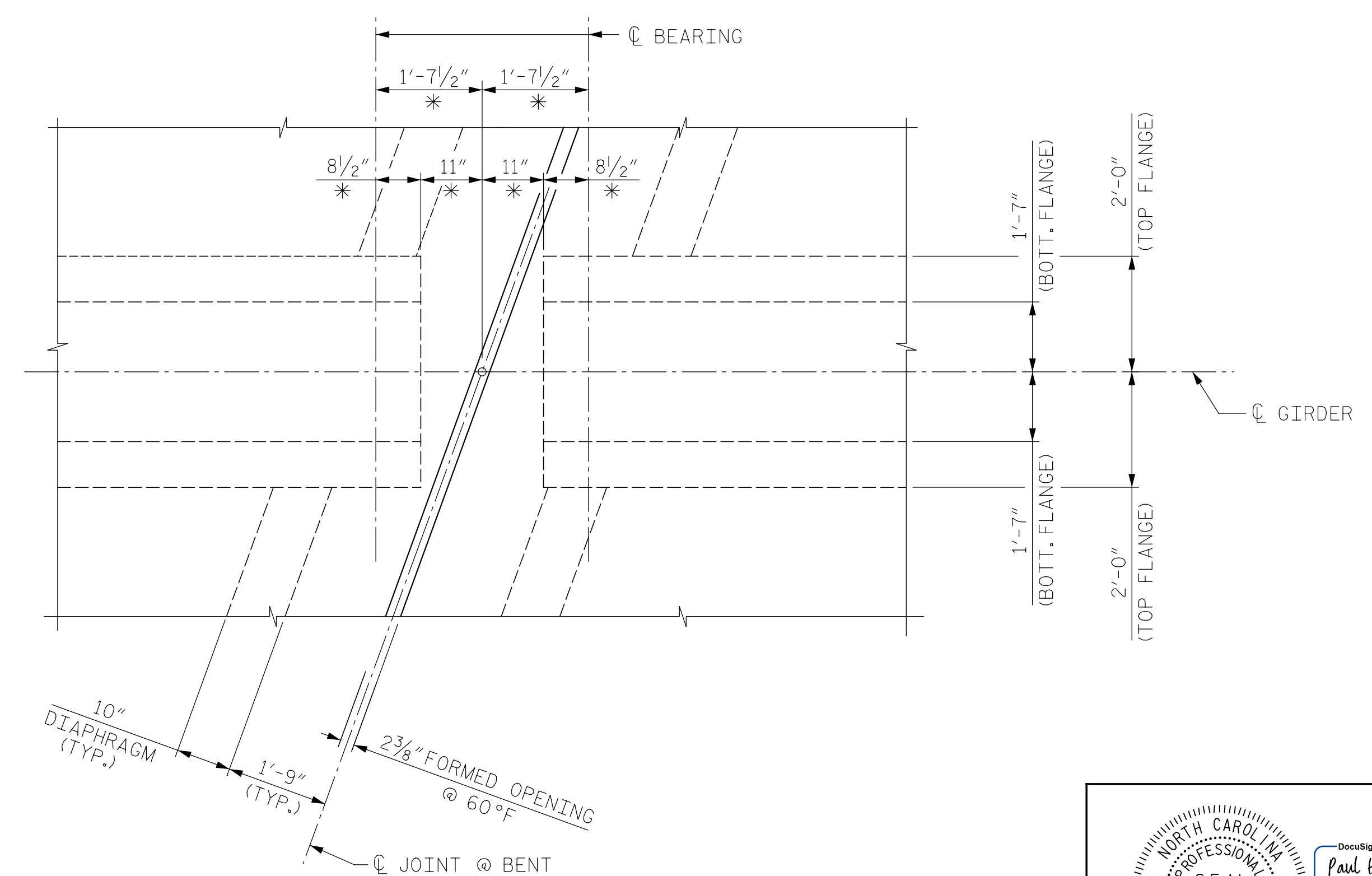


SECTION A-A

BENT DIAPHRAGM & BLOCK-OUT DETAIL
(AT BENTS 1, 2, 4, 6 & 7)



PLAN OF GIRDER AT END BENT 1



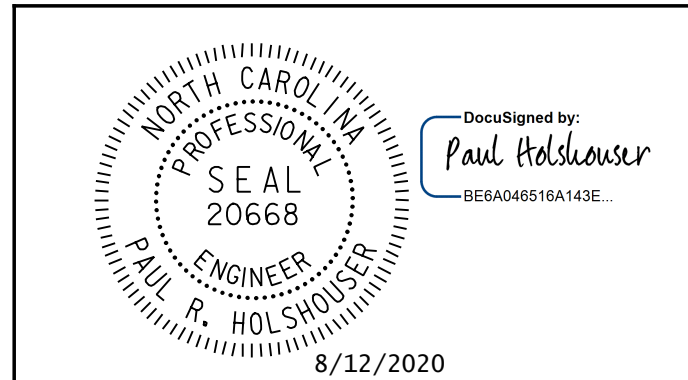
PLAN OF GIRDER AT BENTS 3 & 5

END BENT 2 SIMILAR
DIMENSIONS ARE TYPICAL EA. END BENT

* MEASURED ALONG GIRDER

PROJECT NO. 48793.3.1
BLADEN COUNTY
STATION: 118+81.78 -L-
SHEET 6 OF 6

STATE OF NORTH CAROLINA
DEPARTMENT OF TRANSPORTATION
RALEIGH
SUPERSTRUCTURE
TYPICAL SECTION
DETAILS



DRAWN BY: J. N. AUSTIN DATE: 6-16-20
CHECKED BY: N. REZAEI DATE: 7-21-20
DESIGN E.O.R.: P. R. HOLSHOUSER DATE: 7-23-20

DOCUMENT NOT CONSIDERED FINAL
UNLESS ALL SIGNATURES COMPLETED

ICE of CAROLINAS, PLLC
4505 Falls of Neuse Road, Suite 110
Raleigh, North Carolina 27609
Phone: 919-822-0333
License #: P-0999

REVISIONS						SHEET NO.
NO.	BY:	DATE:	NO.	BY:	DATE:	S-16
1			3			TOTAL SHEETS
2			4			107

Pen Table: \\192.168.64.12\icardu\RDUCAD\Plotting\Pen Tables\ICE.NC.Struct.tbl
 Print Driver: \\192.168.64.12\icardu\RDUCAD\Plotting\NGD0T\22x34_PDF-ICE.pltcfq
 User: jmaustin
 File: R:\Projects\19-77 Division 6 On Call\02 US 701 over Cape Fear River\NC00T\Structures\Dwgs\Final\401-016-US-701-SMU-TS-DET-02.dgn
 Plot Date: 8/11/2020 10:07:46 PM