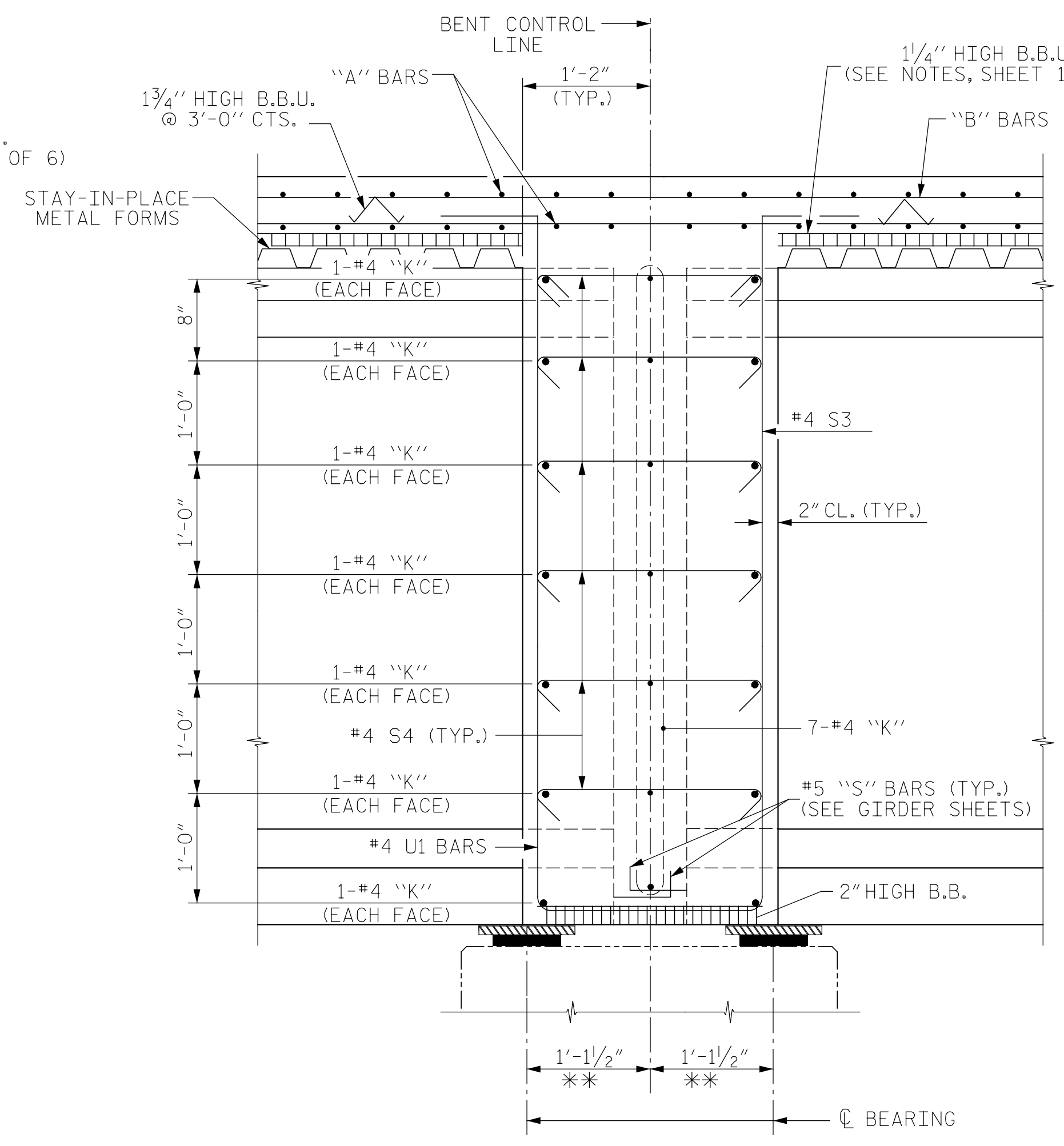
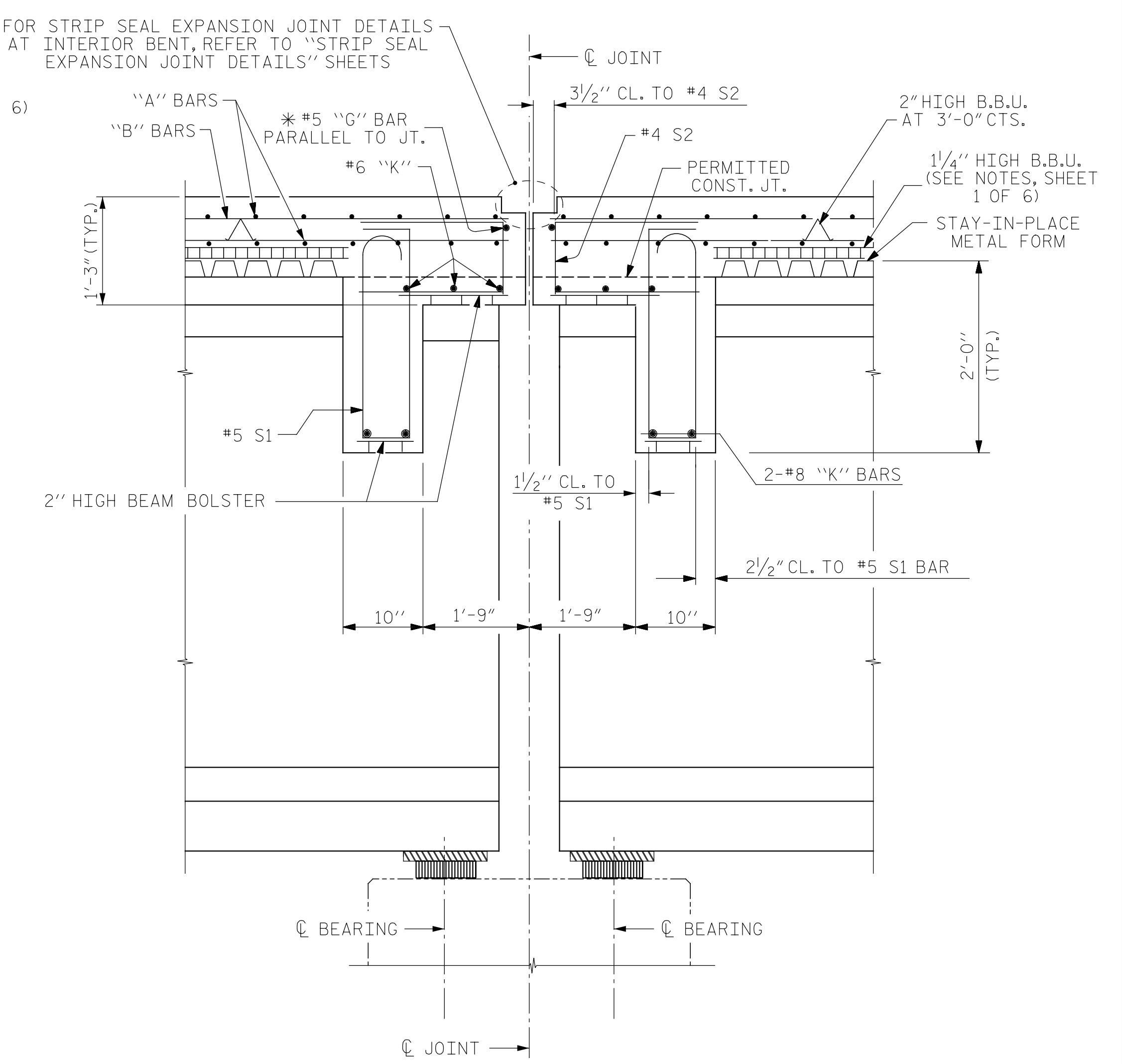


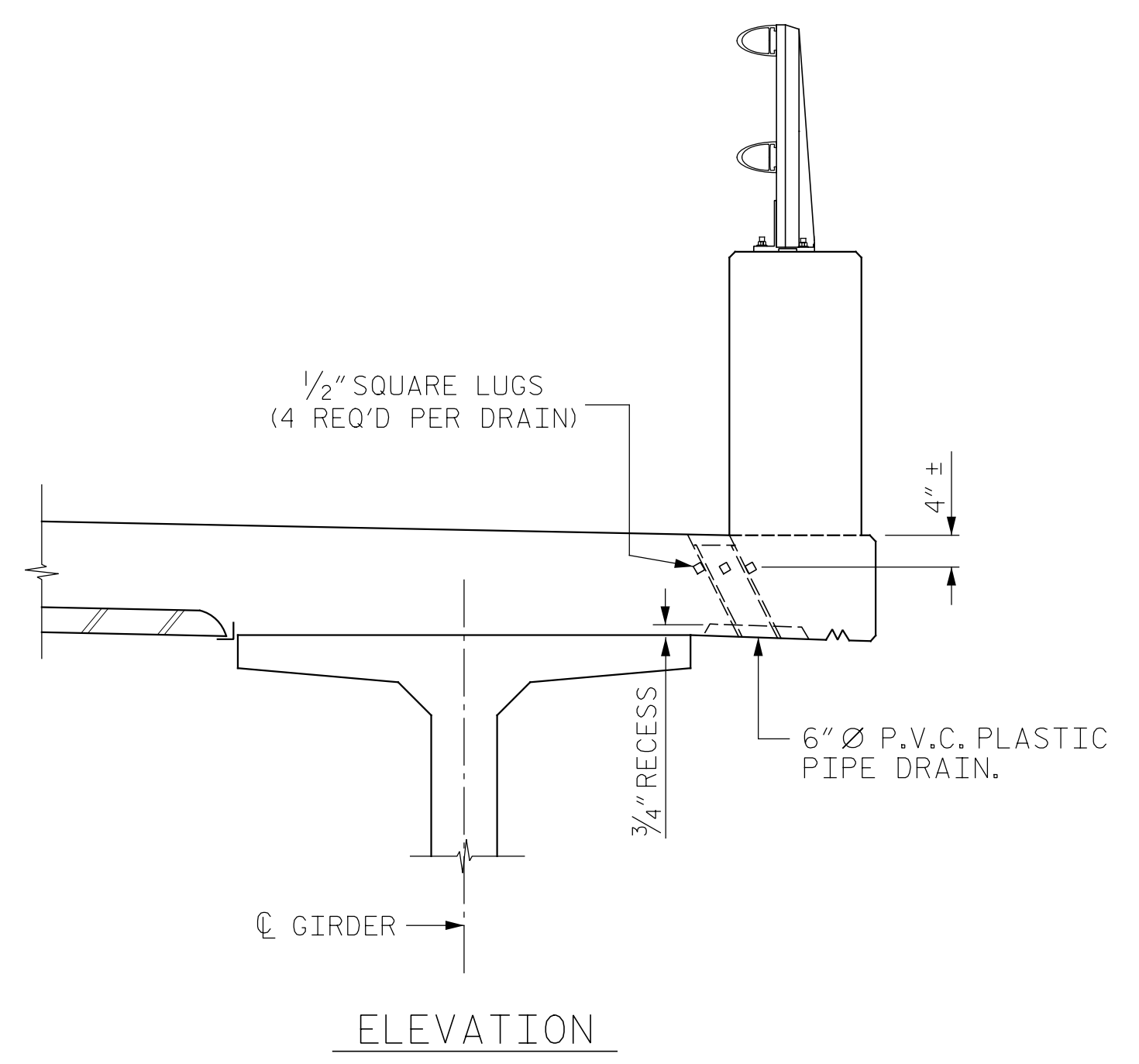
SECTION THRU DIAPHRAGM AT END BENTS
(TYP. EA. STAGE)



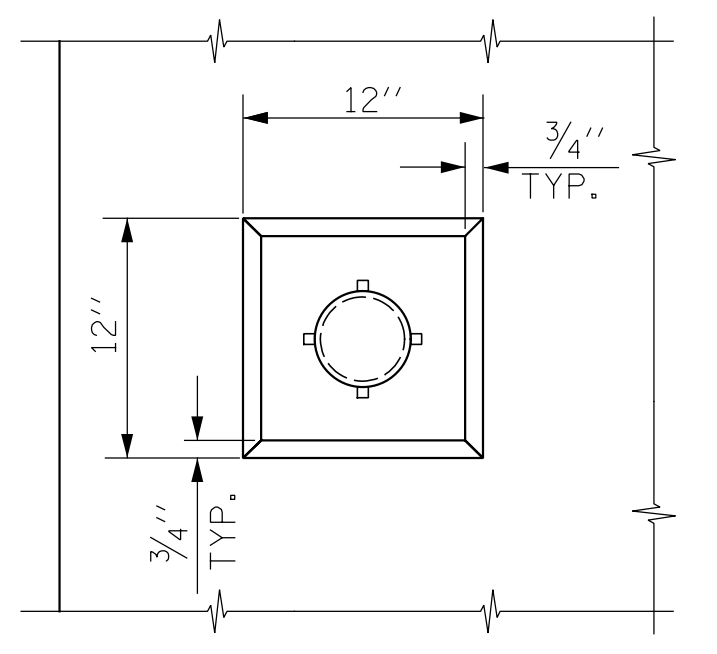
SECTION THRU CONTINUOUS BENT DIAPHRAGM
BENTS 1, 2, 4, 6 & 7
** DIMENSION ALONG C GIRDER
(TYP. EA. STAGE)



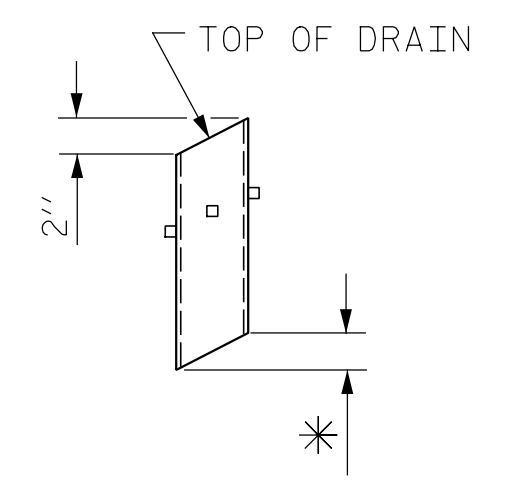
SECTION THRU BENT 3 & 5 DIAPHRAGMS
* #5 'G' BAR MAY BE SHIFTED SLIGHTLY, AS NECESSARY, TO CLEAR REINFORCING STEEL AND STIRRUPS.
(TYP. EA. STAGE)
BAR CALLOUT, PLACEMENT & DIMENSIONS ARE TYPICAL EACH SIDE OF JOINT.



ELEVATION



PLAN OF RECESS



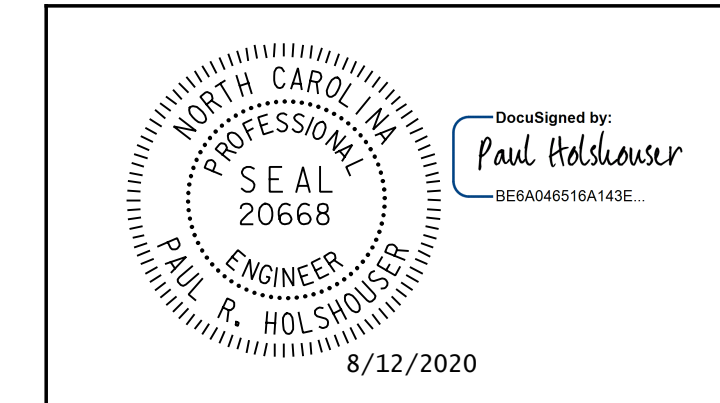
PIPE DETAIL

* TO BE SET TO MATCH SLOPE OF BOTTOM OF OVERHANG (38 DRAINS REQUIRED)

NOTES:

- TOP OF FLOOR DRAINS TO BE SET 3/8" BELOW SURFACE OF SLAB.
- 4 - 1/2" SQUARE LUGS TO BE GLUED TO THE P.V.C. PLASTIC PIPE AT EQUAL SPACES AROUND THE PIPE DRAIN APPROXIMATELY 4" FROM THE TOP OF THE PIPE.
- THE 6" Ø PVC PLASTIC PIPE AND FITTINGS SHALL BE SCHEDULE 40 AND CONFORM TO ASTM D1785.
- FOR ADDITIONAL INFORMATION FOR 1/4" B.B.U., SEE SHEET 1 OF 6.

PROJECT NO. 48793.3.1
BLADEN COUNTY
STATION: 118+81.78 -L-
SHEET 5 OF 6



STATE OF NORTH CAROLINA DEPARTMENT OF TRANSPORTATION RALEIGH SUPERSTRUCTURE TYPICAL SECTION DETAILS					
REVISIONS					
NO.	BY:	DATE:	NO.	BY:	DATE:
1			3		
2			4		

DRAWN BY : J. N. AUSTIN DATE : 6-16-20
CHECKED BY : N. REZAEI DATE : 7-21-20
DESIGN E.O.R. : P. R. HOLSHOUSER DATE : 7-23-20

DOCUMENT NOT CONSIDERED FINAL
UNLESS ALL SIGNATURES COMPLETED

ICE of CAROLINAS, PLLC
4505 Falls of Neuse Road, Suite 110
Raleigh, North Carolina 27609
Phone: 919-822-0333
License #: P-0999

SHEET NO. S-15
TOTAL SHEETS 107

Pen Table: \\192.168.64.12\ncerdur\RDUCAD\Plotting\Pen Tables\ICE_NC_Struct.tbl
Print Driver: \\192.168.64.12\ncerdur\RDUCAD\Plotting\NGD0T\22x34_PDF-ICE.plt
User: jim.austin
File: R:\Projects\19-77 Division 6 On Call\02 US 701 over Cape Fear River\NC00T\Structures\Drawings\Final\401-015-US-701-SWL-TS-DET-01.dgn
Plot: 8/11/2020 10:07:45 PM