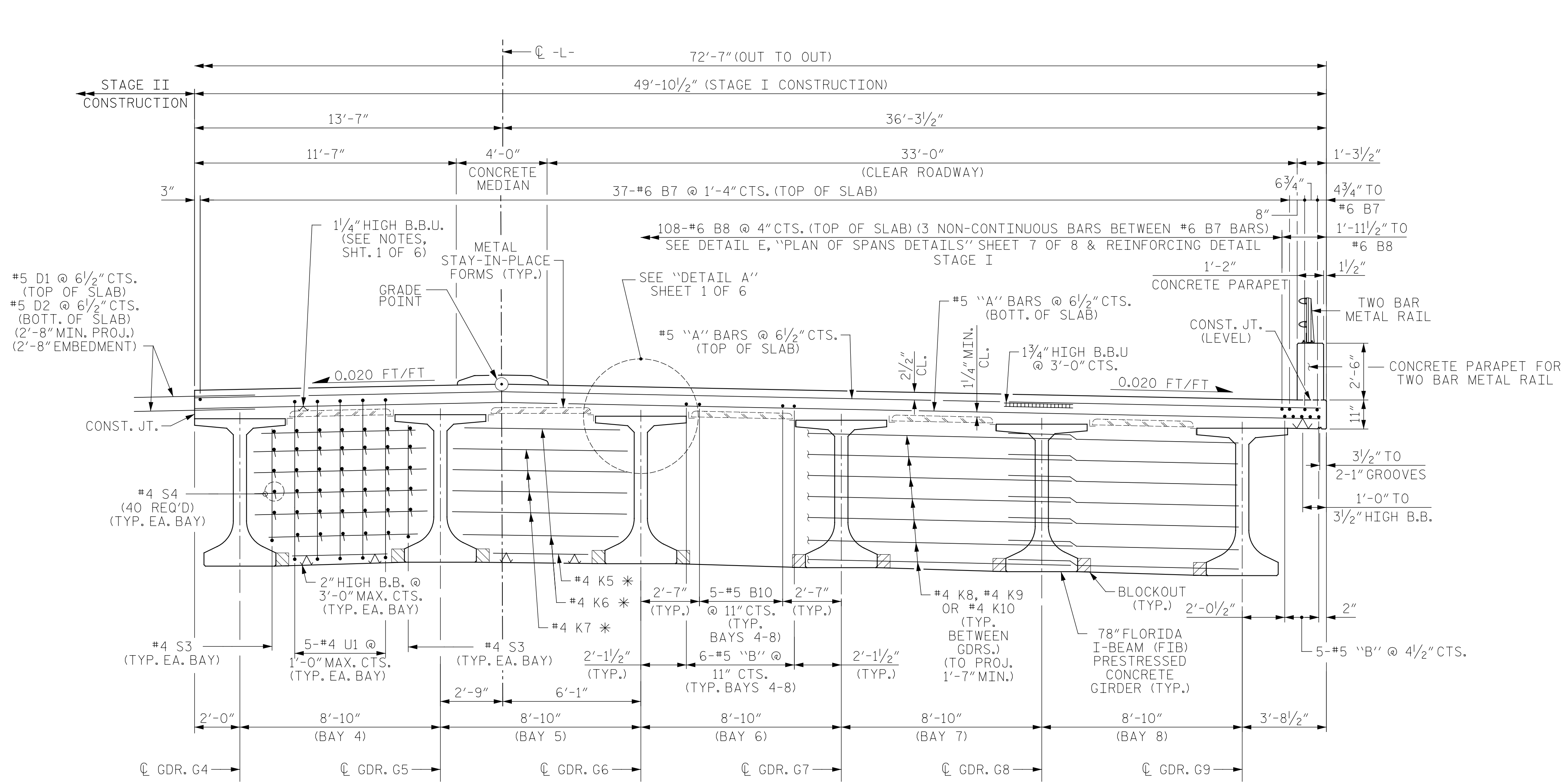


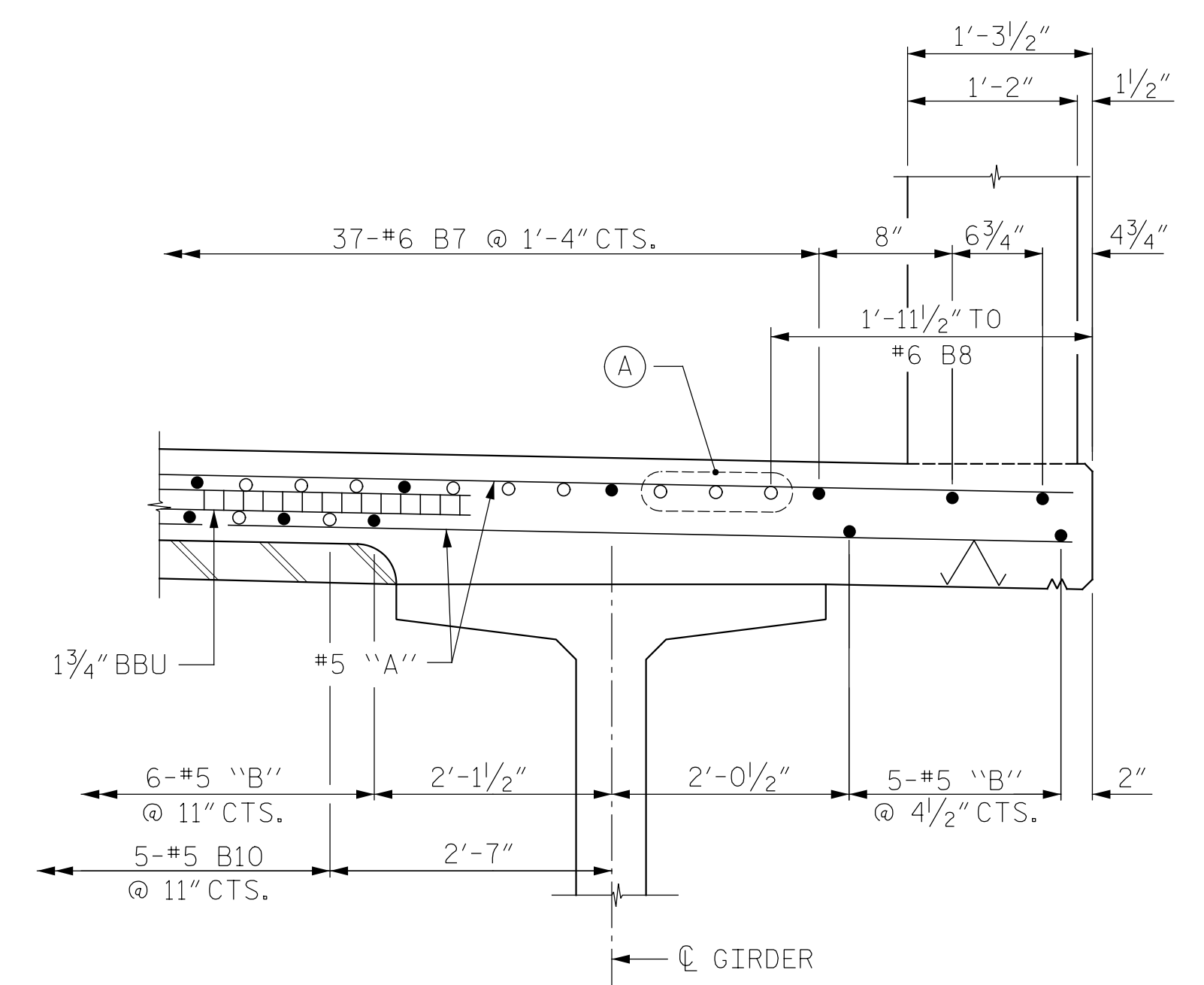
NOTES:

FOR BLOCKOUT DETAIL, SEE "BENT DIAPHRAGM & BLOCK-OUT DETAIL" ON SHEET 6 OF 6.



TYPICAL SECTION @ BENTS 1, 2, 4, 6 & 7

* (EA. FACE)
(TYP. EA. BAY)

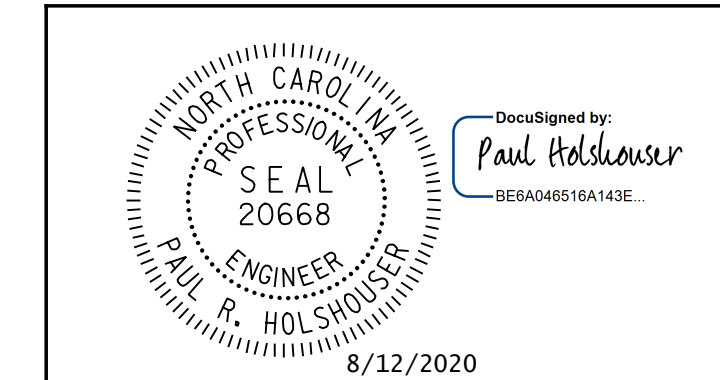


REINFORCING DETAIL
STAGE I

PROJECT NO. 48793.3.1
BLADEN COUNTY
STATION: 118+81.78 -L-

SHEET 2 OF 6

STATE OF NORTH CAROLINA
DEPARTMENT OF TRANSPORTATION
RALEIGH
SUPERSTRUCTURE
TYPICAL SECTION
STAGE I CONSTRUCTION



ICE of Carolinas, PLLC
4505 Falls of Neuse Road, Suite 110
Raleigh, North Carolina 27609
Phone: 919-822-0333
License #: P-0999

REVISIONS						SHEET NO.	
NO.	BY:	DATE:	NO.	BY:	DATE:	S-12	
1			3			TOTAL SHEETS	
2			4			107	

DRAWN BY: N.D. AIUTO DATE: 7-15-20
CHECKED BY: N. REZAEI DATE: 7-21-20
DESIGN E.O.R.: P. R. HOLSHOUSER DATE: 7-23-20

DOCUMENT NOT CONSIDERED FINAL
UNLESS ALL SIGNATURES COMPLETED

Pen Table: \\192.168.64.12\ice\rd\RDUCAD\Plotting\Pen Tables\ICE_NC_Struct.tbl
Print Driver: \\192.168.64.12\ice\rd\RDUCAD\Plotting\NGDOT\22x34_PDF-ICE.plt
User: jim.austin
File: R:\Projects\19-77 Division 6 On Call\02 US 701 over Cape Fear River\NC DOT\Structures\Drawings\Final\401-012-US-701-SMU-TS-02.dgn
Plot Date: 8/11/2020 10:07:37 PM
Plot Path: R:\Projects\19-77 Division 6 On Call\02 US 701 over Cape Fear River\NC DOT\Structures\Drawings\Final\401-012-US-701-SMU-TS-02.dgn