

TOTAL BILL OF MATERIAL														
	CONSTRUCTION MAINTENANCE AND REMOVAL OF TEMPORARY ACCESS AT STA. 118+81.78 -L-	REMOVAL OF EXISTING STRUCTURE AT STA. 118+81.78 -L-	ASBESTOS ASSESSMENT	6'-0" DIA. DRILLED PIERS	PERMANENT STEEL CASING FOR 6'-0" DIA. DRILLED PIERS	PDA TESTING	SID INSPECTIONS	CSL TESTING	UNCLASSIFIED STRUCTURE EXCAVATION	REINFORCED CONCRETE DECK SLAB	GROOVING BRIDGE FLOORS	CLASS A CONCRETE	BRIDGE APPROACH SLABS, STA. 118+81.78 -L-	REINFORCING STEEL
	LUMP SUM	LUMP SUM	LUMP SUM	LIN. FT.	LIN. FT.	EACH	EACH	EACH	LUMP SUM	SQ. FT.	SQ. FT.	CU. YDS.	LUMP SUM	LBS.
SUPERSTRUCTURE										88,407	84,490			
END BENT 1						2						97.2		14,512
BENT 1				493.4	123.9		2	4				233.8		127,546
BENT 2				527.4	95.4		2	4				260.1		137,066
BENT 3				576.0	136.0		2	4				273.9		146,537
BENT 4				576.0	196.0		2	4				274.9		146,884
BENT 5				576.0	196.0		2	4				272.8		146,240
BENT 6				541.6	132.9		2	4				242.8		135,876
BENT 7				512.7	157.5		2	4				205.0		125,165
END BENT 2						2						99.5		14,800
LOAD TEST PIER				151.0	41.0		1	1						24,286
TOTAL	LUMP SUM	LUMP SUM	LUMP SUM	3954.1	1078.7	4	15	29	LUMP SUM	88,407	84,490	1,960.0	LUMP SUM	1,018,912

TOTAL BILL OF MATERIAL													
	SPIRAL COLUMN REINFORCING STEEL	PILE DRIVING EQUIP. SET UP FOR HP 14X73 STEEL PILES	HP 14 X 73 STEEL PILES		PILE REDRIVES	TWO BAR METAL RAIL	1'-2" X 2'-6" CONCRETE PARAPET	RIP RAP CLASS II (2'-0" THICK)	GEOTEXTILE FOR DRAINAGE	ELASTOMERIC BEARINGS	STRIP SEAL EXPANSION JOINTS	78" FLORIDA I-BEAM (FIB) GIRDERS	
	LBS.	EACH	NO.	LIN. FT.	EACH	LIN. FT.	LIN. FT.	TONS	SQ. YDS.	LUMP SUM	LUMP SUM	NO.	LIN. FT.
SUPERSTRUCTURE						2,422.04	2,445.38					72	10,855.5
END BENT 1		19	19	1,995.0	8			1,616	1,796				
BENT 1	26,031												
BENT 2	28,694												
BENT 3	31,324							1,608	1,787				
BENT 4	31,410												
BENT 5	31,238												
BENT 6	28,301												
BENT 7	25,297												
END BENT 2		19	19	1,995.0	8			1,608	1,787				
LOAD TEST PIER	6,035												
TOTAL	208,330	38	38	3,990.0	16	2,422.04	2,445.38	4,832	5,370	LUMP SUM	LUMP SUM	72	10,855.5

PROJECT NO. 48793.3.1
BLADEN COUNTY
 STATION: 118+81.78 -L-

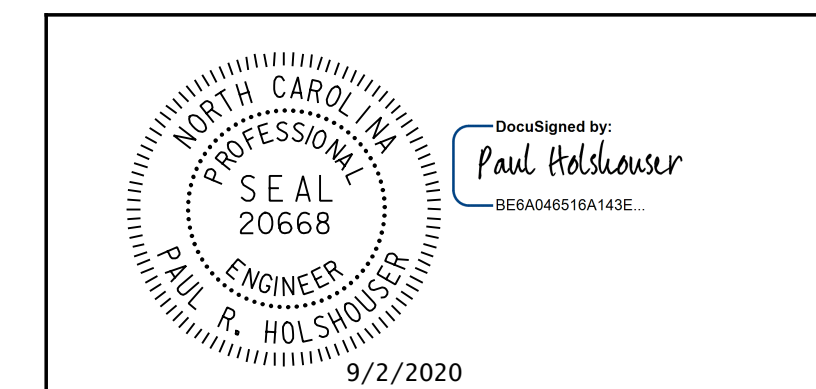
SHEET 7 OF 7

STATE OF NORTH CAROLINA
 DEPARTMENT OF TRANSPORTATION
 RALEIGH

GENERAL DRAWING

FOR BRIDGE OVER CAPE FEAR RIVER ON US 701 (N. POPLAR ST.) BETWEEN NC 87 (BUS) AND NC 53

REVISIONS						SHEET NO.
NO.	BY:	DATE:	NO.	BY:	DATE:	S-07
1			3			TOTAL SHEETS
2			4			107



ICE of CAROLINAS, PLLC
 4505 Falls of Neuse Road, Suite 110
 Raleigh, North Carolina 27609
 Phone: 919-822-0333
 License #: P-0999

DOCUMENT NOT CONSIDERED FINAL UNLESS ALL SIGNATURES COMPLETED

DRAWN BY : J. N. AUSTIN DATE : 7-20-20
 CHECKED BY : N. D'AIUTO DATE : 7-20-20
 DESIGN E.O.R. : P. R. HOLSHOUSER DATE : 7-23-20

Pen Table: \\192.168.64.12\ncerdur\RDUCAD\Plotting\Pen Tables\ICE_NC_Struct.tbl
 Print Driver: \\192.168.64.12\ncerdur\RDUCAD\Plotting\ng\NGDOT\22x34_PDF_ICE.plt;fg
 User name: jim.austin
 File name: R:\Projects\19-77 Division 6 On Call\02 US 701 over Cape Fear River\NC00T\Structures\Dwg\Final\401_007_US_701_SML_TBOM.dgn
 Plot time: 9/2/2020 2:15:01 PM