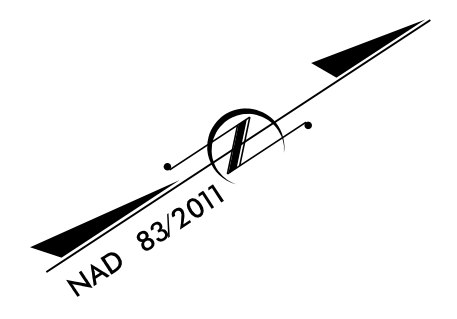


PROJECT REFERENCE NO. 48793.31		SHEET NO. EC-8/CONST.-05	
RW SHEET NO.		HYDRAULICS ENGINEER	
ROADWAY DESIGN ENGINEER		HYDRAULICS ENGINEER	
		ICE of Carolinas, PLLC 4505 Falls of Neuse Road, Suite 110 Raleigh, North Carolina 27609 Phone: 803-822-0333 License #: P-0999	

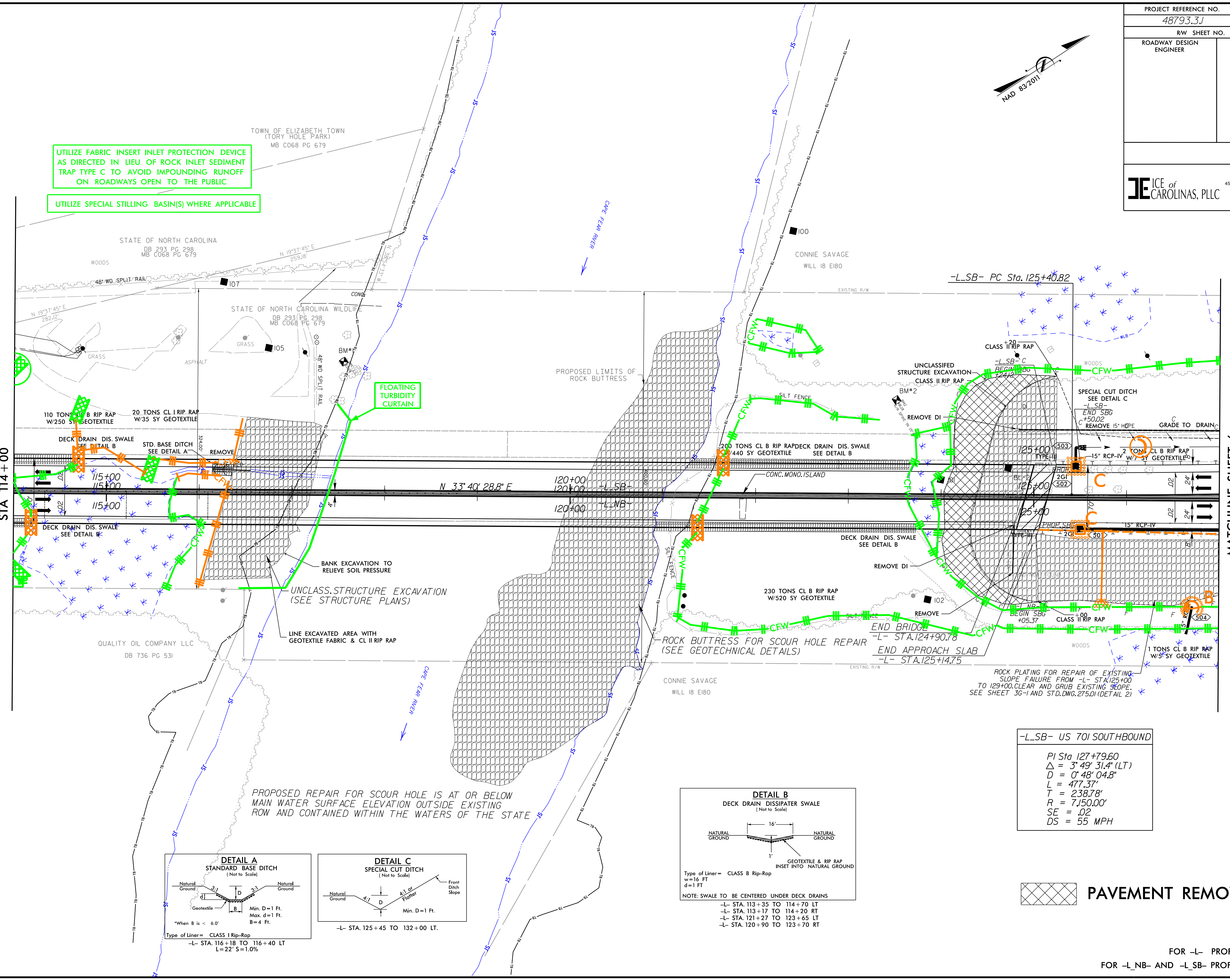


UTILIZE FABRIC INSERT INLET PROTECTION DEVICE AS DIRECTED IN LIEU OF ROCK INLET SEDIMENT TRAP TYPE C TO AVOID IMPOUNDING RUNOFF ON ROADWAYS OPEN TO THE PUBLIC

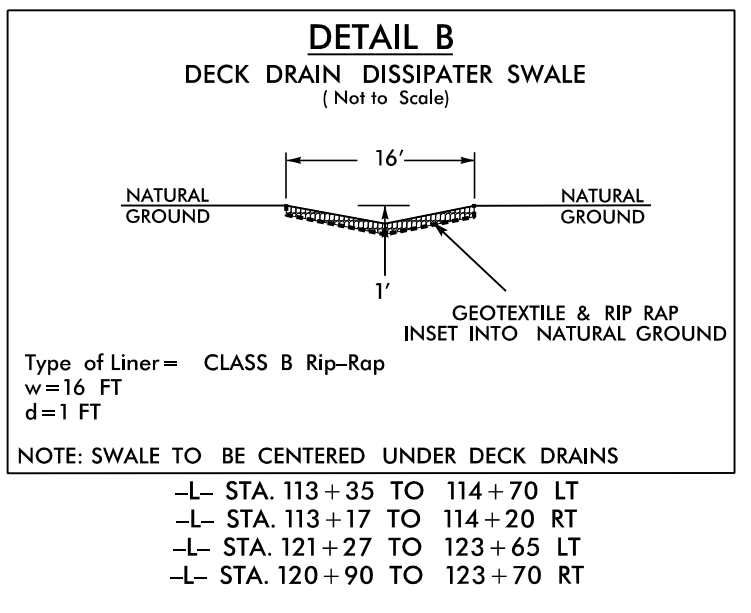
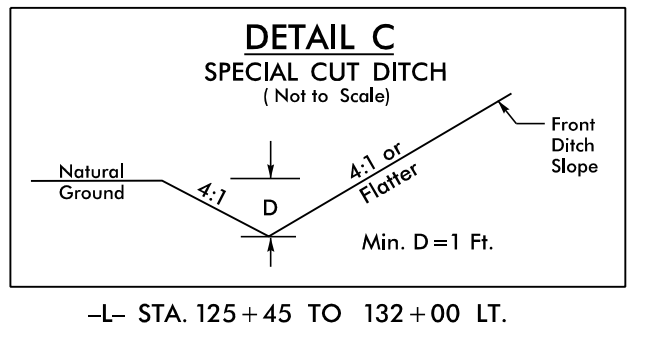
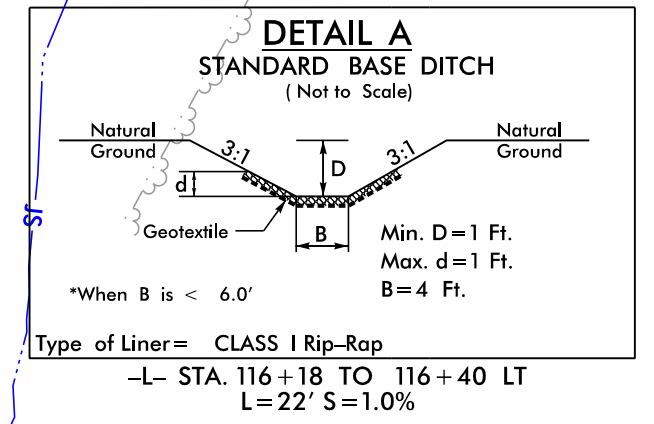
UTILIZE SPECIAL STILLING BASIN(S) WHERE APPLICABLE

MATCHLINE SHEET 4  
STA 114+00

MATCHLINE SHEET 6  
STA 127+00



PROPOSED REPAIR FOR SCOUR HOLE IS AT OR BELOW MAIN WATER SURFACE ELEVATION OUTSIDE EXISTING ROW AND CONTAINED WITHIN THE WATERS OF THE STATE



-L\_SB- US 701 SOUTHBOUND

PI Sta. 127+79.60  
 $\Delta = 3' 49' 31.4" (LT)$   
 $D = 0' 48' 04.8"$   
 $L = 477.37'$   
 $T = 238.78'$   
 $R = 7,150.00'$   
 $SE = .02$   
 $DS = 55 MPH$

PAVEMENT REMOVAL

FOR -L- PROFILE, SEE SHEET 8  
FOR -L\_NB- AND -L\_SB- PROFILE, SEE SHEET 9

8/17/2020  
 R:\Projects\19-77 Division 6 On Call\02 US 701 over Cape Fear River\NCDOT\Hydraulics\CADD\PSHYE\RevisionControl\US701-LEC\_psh05\_FINAL.dgn  
 8/17/2011