

PROJECT REFERENCE NO. 48793.31	SHEET NO. EC-5/CONST.-05
RW SHEET NO.	HYDRAULICS ENGINEER
ROADWAY DESIGN ENGINEER	

ICE of Carolinas, PLLC 4505 Falls of Neuse Road, Suite 110 Raleigh, North Carolina 27609 Phone: 919-492-0333 License #: P-0999	
--	--

NOTE:
PLACE TEMPORARY ROCK SEDIMENT DAMS TYPE - B AND TEMPORARY ROCK SILT CHECKS TYPE - A AT DRAINAGE OUTLETS.

NOTE:
PERIMETER EROSION CONTROL MEASURES SHALL BE INSTALLED DURING CLEARING AND GRUBBING PHASE.

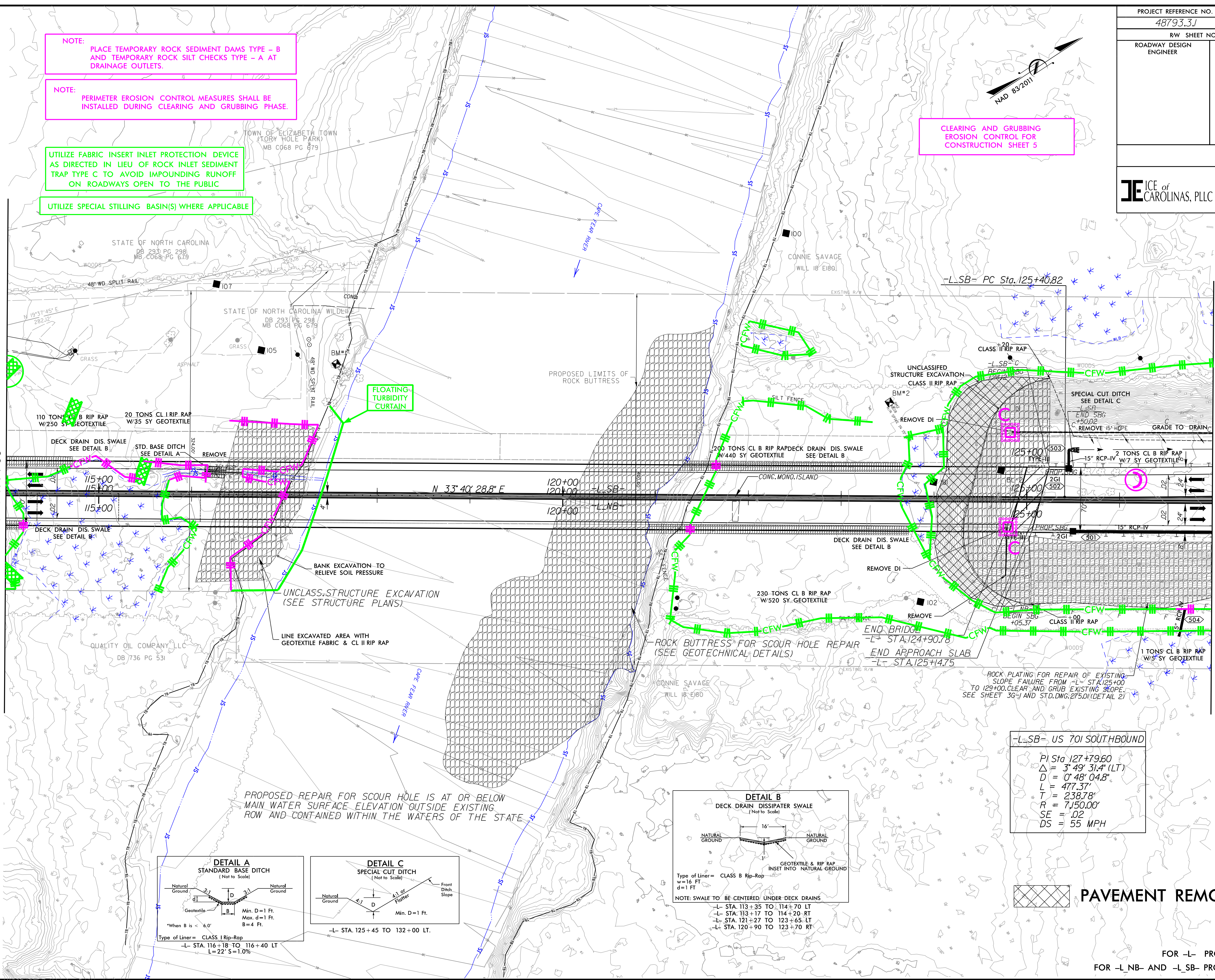
UTILIZE FABRIC INSERT INLET PROTECTION DEVICE AS DIRECTED IN LIEU OF ROCK INLET SEDIMENT TRAP TYPE C TO AVOID IMPOUNDING RUNOFF ON ROADWAYS OPEN TO THE PUBLIC

UTILIZE SPECIAL STILLING BASIN(S) WHERE APPLICABLE

CLEARING AND GRUBBING EROSION CONTROL FOR CONSTRUCTION SHEET 5

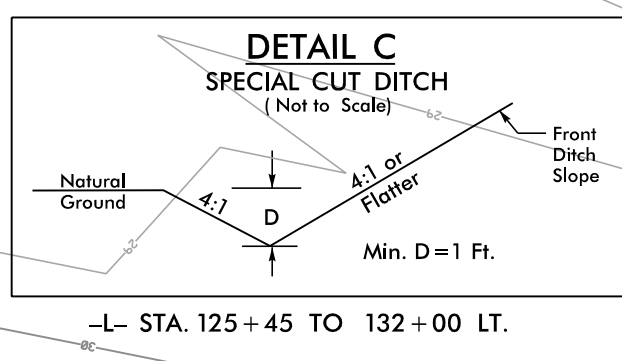
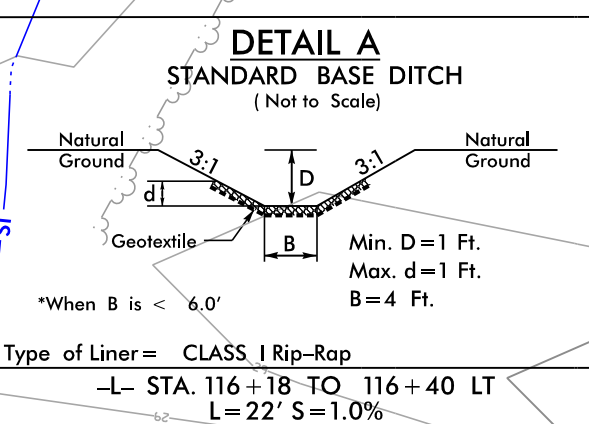
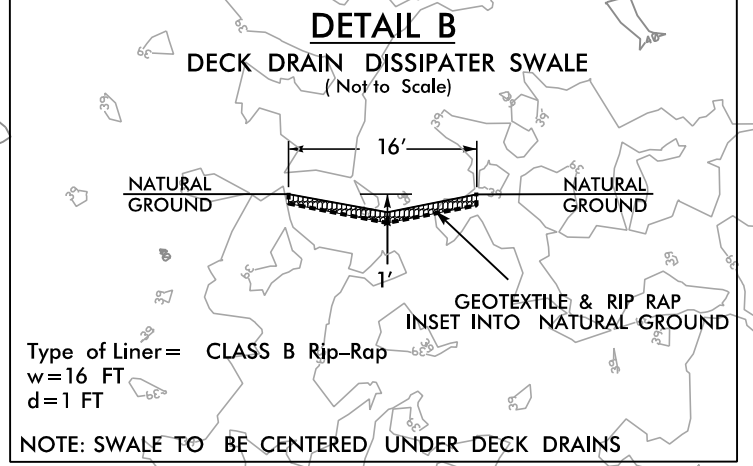
MATCHLINE SHEET 4
STA 114+00

MATCHLINE SHEET 6
STA 127+00



-L-SB- US 701 SOUTHBOUND

PI Sta 127+79.60
 $\Delta = 3^{\circ} 49' 31.4''$ (LT)
 $D = 0^{\circ} 48' 04.8''$
 $L = 477.37'$
 $T = 238.78'$
 $R = 7,150.00'$
 $SE = .02$
 $DS = 55$ MPH



-L- STA. 113+35 TO 114+70 LT
-L- STA. 113+17 TO 114+20 RT
-L- STA. 121+27 TO 123+65 LT
-L- STA. 120+90 TO 123+70 RT

PAVEMENT REMOVAL

FOR -L- PROFILE, SEE SHEET 8
FOR -L-NB- AND -L-SB- PROFILE, SEE SHEET 9

8/17/99
8/1/2020
C:\p2020\19-77 Division 6.0m Cell\02 US 701 over Cape Fear River\...NCDOT\Hydraulics\CADD\PSHA\ErosionControl\US701-EC_psh05_C&G.dgn