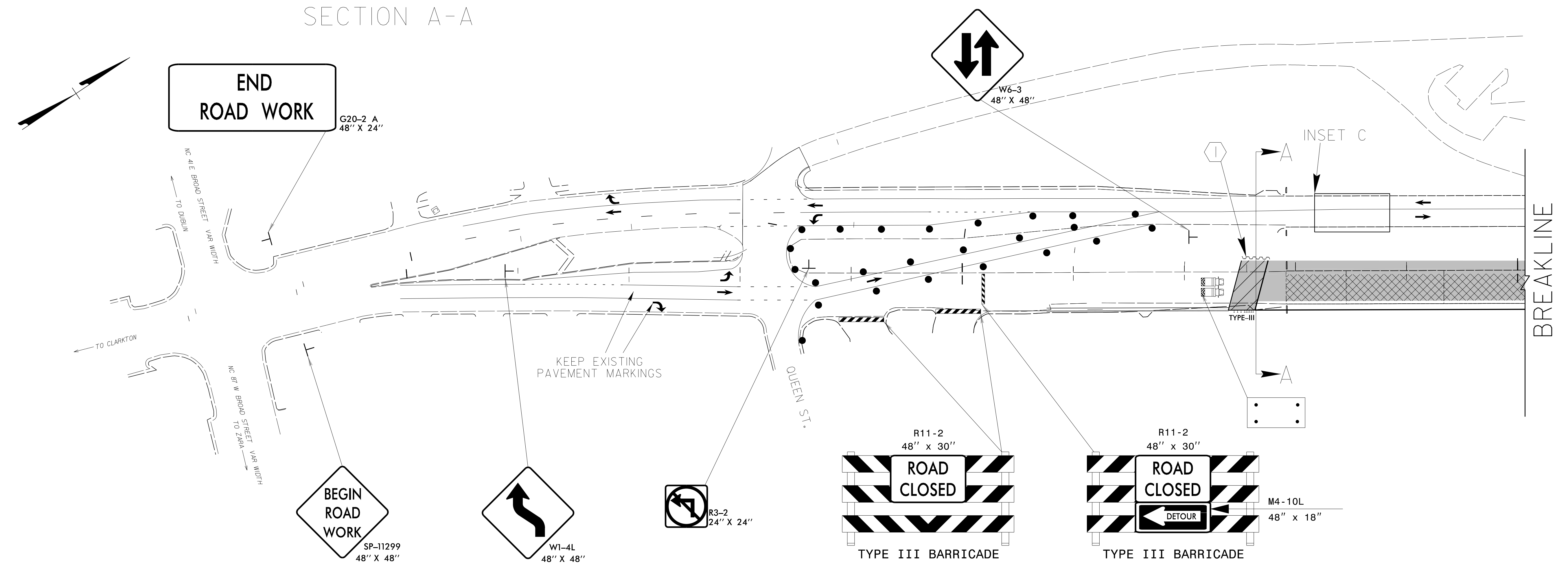
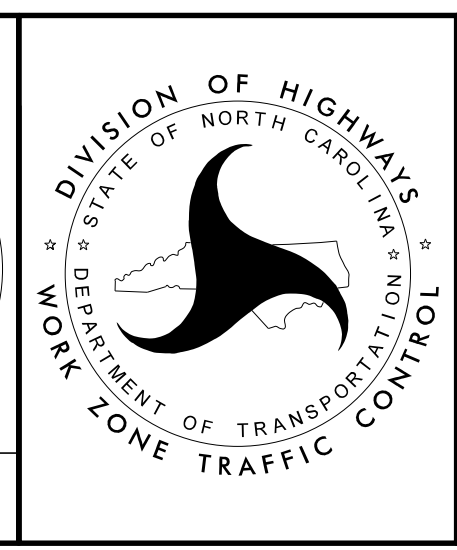


SECTION A-A



① TEMPORARY SHORING
 FROM STA. 112+50 +/- 25' LEFT OF ALIGNMENT
 FROM STA. 113+50 +/- 25' LEFT OF ALIGNMENT
 ESTIMATED LENGTH: 100', AVERAGE HEIGHT: 11'
 (SEE TEMPORARY SHORING DATA SHEET TMP-2A)

APPROVED: *J. Stuart Bourne*
 DATE: 8/12/2020
 SEAL
 NORTH CAROLINA
 PROFESSIONAL ENGINEER
 19680
 J. STUART BOURNE



PHASE I

8/11/2020
 R:\Projects\19-77 Division 6 On Call\02 US 70\over Cape Fear River\NCDOT\TrafficControl\TCP\Phasing\15806\0090\IL\TC_TMP_04.dgn
 User:mohit.mathew