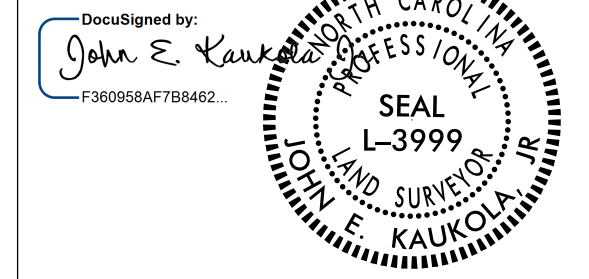


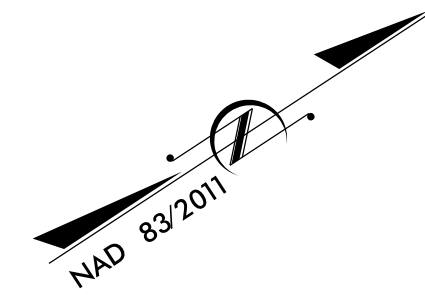
Location and Surveys

NCDOT LOCATION AND SURVEYS DIVISION 6 4834 HWY 301 SOUTH HOPE MILLS, NC 28348

PROJECT SURVEYOR



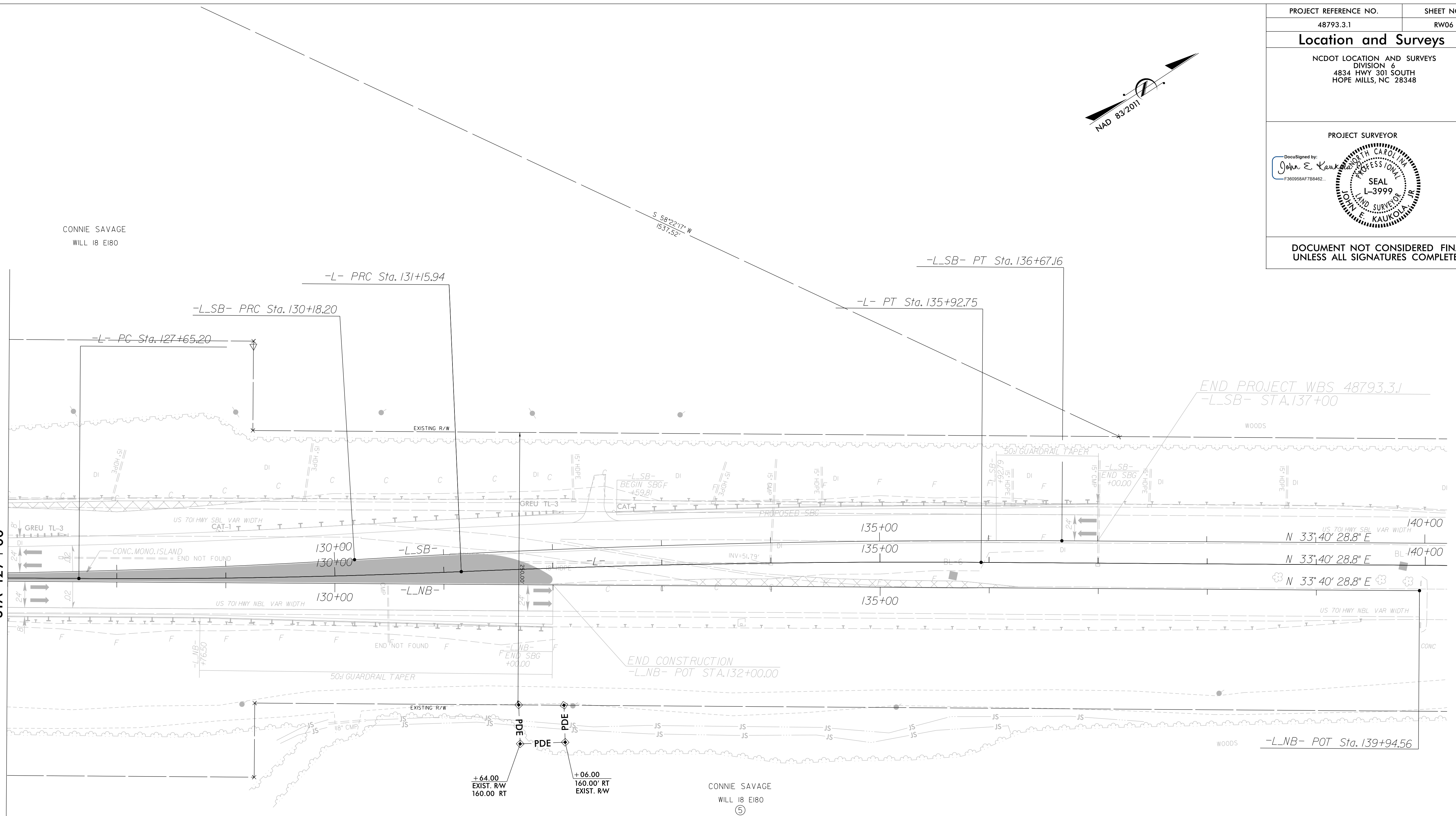
DOCUMENT NOT CONSIDERED FINAL UNLESS ALL SIGNATURES COMPLETED



REVISIONS

PLANS FROM CE\Updated ROW files for J.Stilwell\US701.L\dgn_psh06.ls.dgn

MATCHLINE SHEET 5 STA 127+00



-L_SB- US 701 SOUTHBOUND	
PI Sta 127+79.60	PI Sta 133+42.80
$\Delta = 3^{\circ} 49' 31.4''$ (LT)	$\Delta = 3^{\circ} 49' 31.4''$ (RT)
D = 0' 48' 04.8"	D = 0' 35' 22.1"
L = 477.37'	L = 648.96'
T = 238.78'	T = 324.60'
R = 7,150.00'	R = 9,720.00'
SE = .02	SE = NC
DS = 55 MPH	DS = 55 MPH

-L- US 701	
PI Sta 129+40.61	PI Sta 133+54.39
$\Delta = 2^{\circ} 48' 38.1''$ (LT)	$\Delta = 2^{\circ} 48' 38.1''$ (RT)
D = 0' 48' 04.8"	D = 0' 35' 22.1"
L = 350.74'	L = 476.81'
T = 175.40'	T = 238.45'
R = 7,150.00'	R = 9,720.00'

I, John E. Kaukola, certify that the right of way and permanent easement monumentation for this project shown herein was completed under my direct and responsible charge from an actual survey made under my supervision; that all horizontal closures had a minimum ratio of precision of 1:10,000 (Class A). Field work was performed July of 2020, and all coordinates are based on NAD83/2011; That this survey was performed to meet the requirements of 21NCAC 56.1600 as applicable.

This 15th day of July, 2020.
John E. Kaukola Jr.
Professional Land Surveyor L-3999



NOTES:

1. IF FURTHER INFORMATION REGARDING PROJECT CONTROL IS NEEDED PLEASE CONTACT THE LOCATION AND SURVEYS UNIT.
2. PROJECT CONTROL WAS ESTABLISHED USING GNSS, THE GLOBAL NAVIGATION SATELLITE SYSTEM.
3. RIGHT OF WAY MONUMENTATION ESTABLISHED JULY 2020.