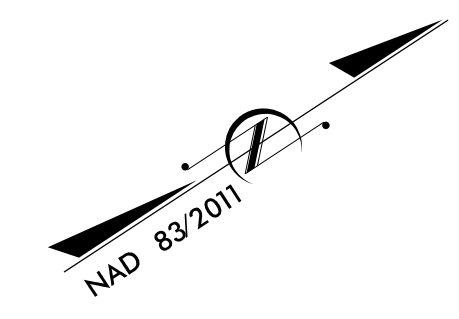


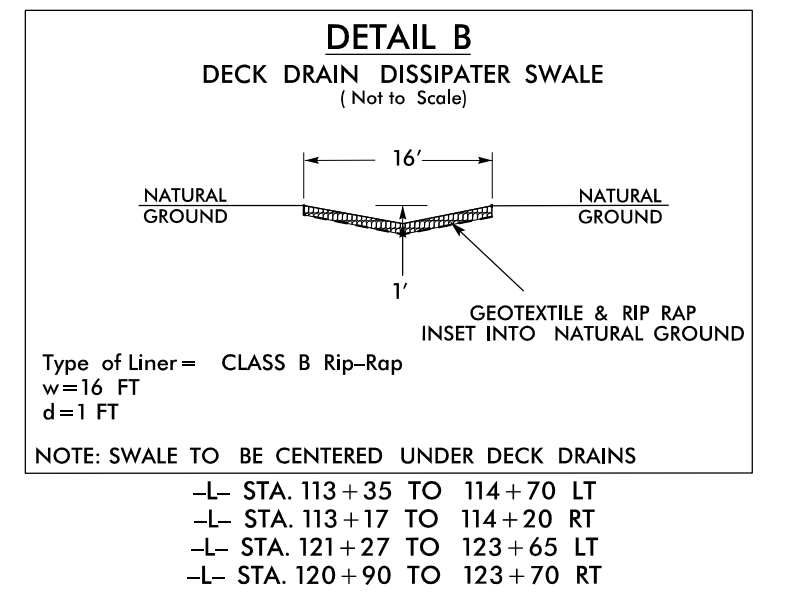
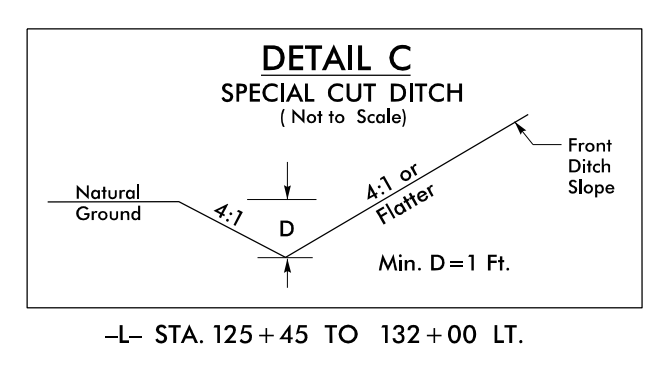
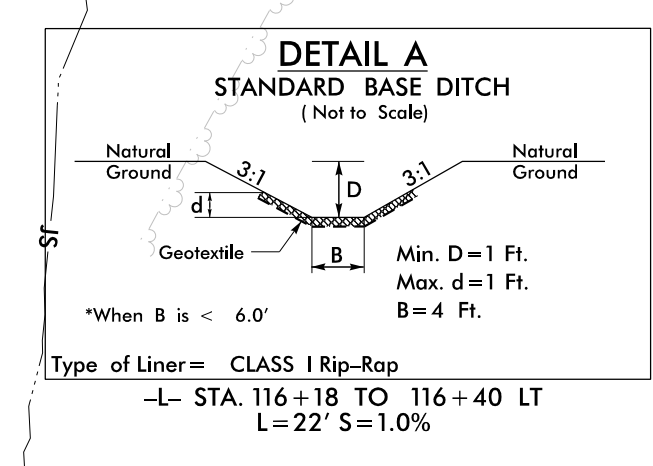
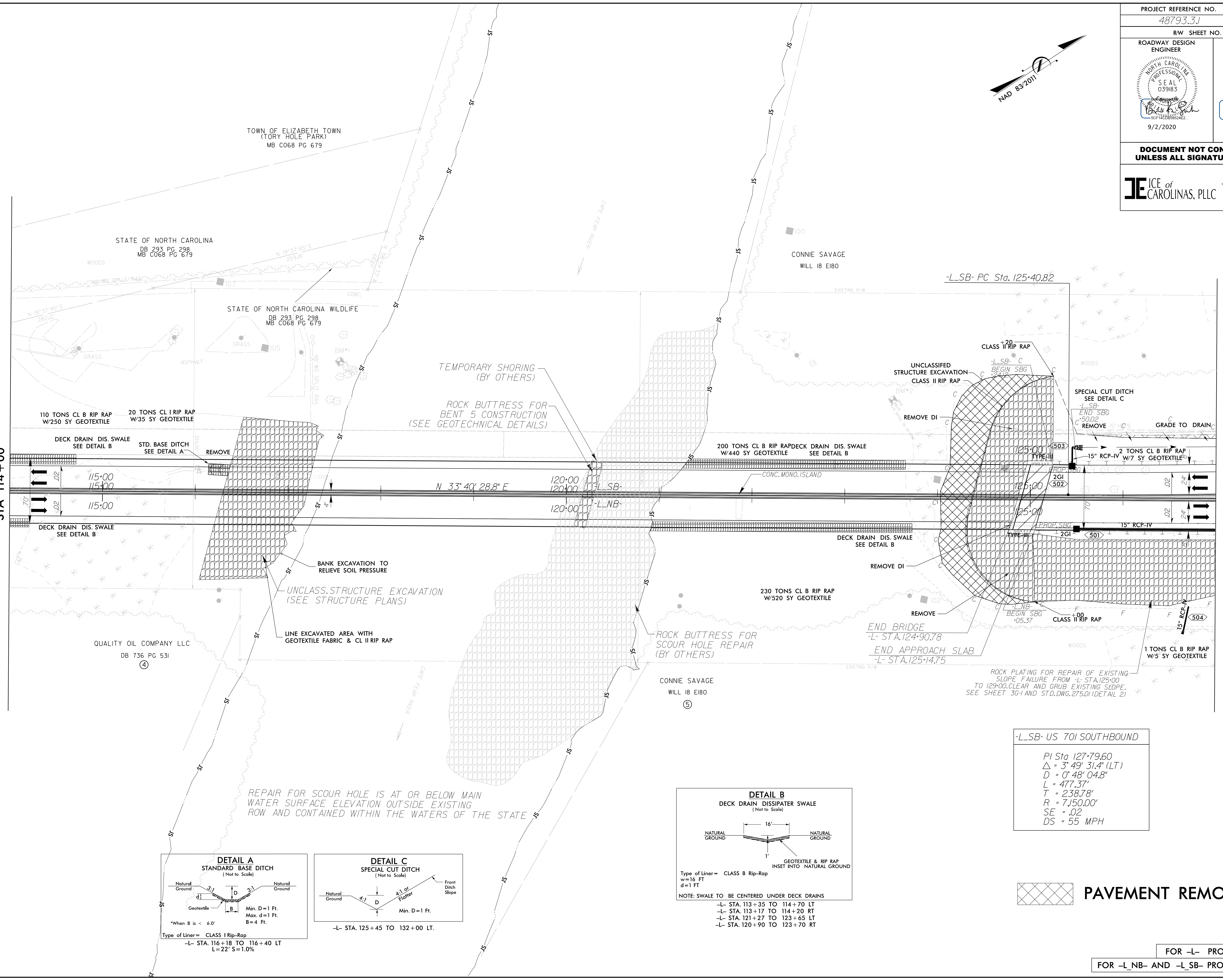
8/17/99
9:51:02 AM
R:\Projects\19-77 Division 6 On Call\02 US 701 over Cape Fear River\NCDOT\Roadway\Proj\Plansheets\US701\rdy_psh05.dgn
B:\m\lusk

PROJECT REFERENCE NO. 48793.31	SHEET NO. 5
RW SHEET NO.	
ROADWAY DESIGN ENGINEER NORTH CAROLINA PROFESSIONAL SEAL 039183 9/2/2020	HYDRAULICS ENGINEER NORTH CAROLINA PROFESSIONAL SEAL 20754 9/2/2020
DOCUMENT NOT CONSIDERED FINAL UNLESS ALL SIGNATURES COMPLETED	
ICE of CAROLINAS, PLLC 4503 Falls of Neuse Road, Suite 110 Raleigh, North Carolina 27609 Phone: 803-822-0333 License #: P-6999	



MATCHLINE SHEET 4
STA 114+00

MATCHLINE SHEET 6
STA 127+00



-L_SB- US 701 SOUTHBOUND

PI Sta 127+79.60
 $\Delta = 3^\circ 49' 31.4" (LT)$
 $D = 0' 48" 04.8"$
 $L = 477.37'$
 $T = 238.78'$
 $R = 7,150.00'$
 $SE = .02$
 $DS = 55 MPH$

PAVEMENT REMOVAL

FOR -L- PROFILE, SEE SHEET 8
FOR -L_NB- AND -L_SB- PROFILE, SEE SHEET 9