


PROJECT REFERENCE NO.	SHEET NO.
48793.3.1	2G-3
GEOTECHNICAL ENGINEER  8/11/2020	
DOCUMENT NOT CONSIDERED FINAL UNLESS ALL SIGNATURES COMPLETED	

PI Sta. 111+97.65
 $\Delta = 8'12''47.2''$ (LT)
 $D = 13'13''56.2''$
 $L = 62.07'$
 $T = 31.03'$
 $R = 433.00'$
 $SE = .03$
 $DS = 25$ MPH

-L- POT Sta. 112+28.63 =
 -L-SB- PT Sta. 112+28.63 (3' LT) =
 -L-NB- POT Sta. 112+28.63 (3' RT)

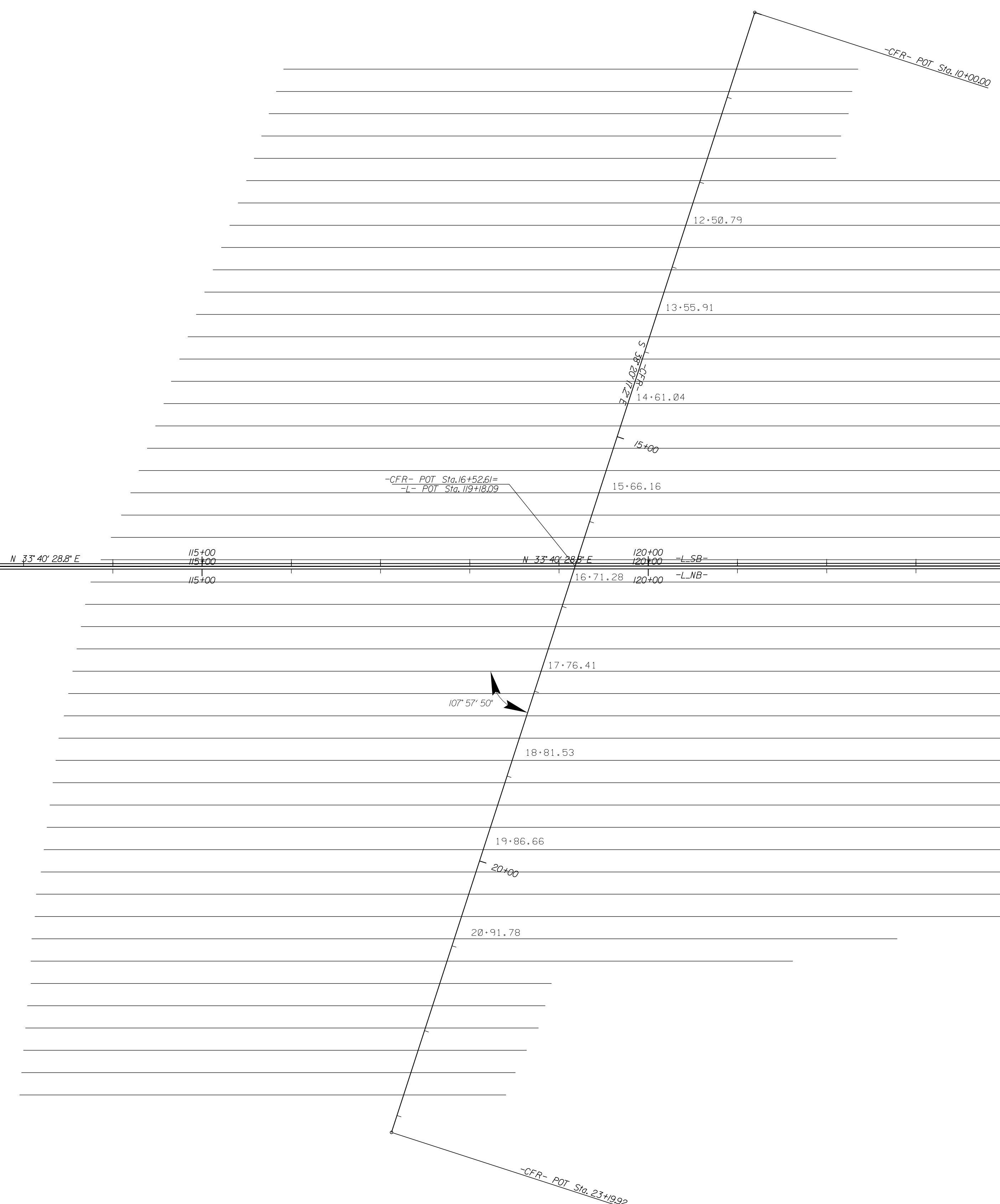
-L-SB- PC Sta. 111+66.56

-L-SB- PT Sta. 110+23.43

N 41° 53' 16.72" E


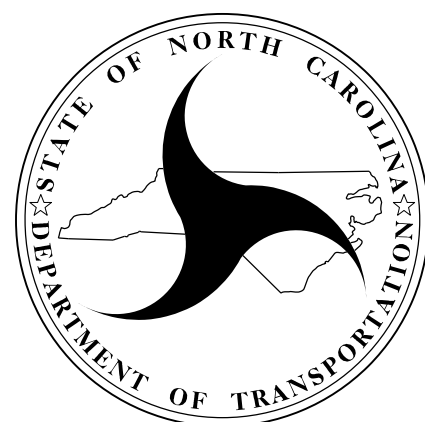
N 33° 40' 28.8" E

N 33° 40' 28.8" E



NOT TO SCALE	
PREPARED BY: M. SNYDER	DATE: 7/20
REVIEWED BY: M. VALIQUETTE	DATE: 7/20

Prepared in the Office of:

NORTH CAROLINA
 DEPARTMENT OF TRANSPORTATION
 DIVISION OF HIGHWAYS

**GEOTECHNICAL
 ENGINEERING UNIT**

-CFR- ALIGNMENT DETAIL

REVISIONS					
NO.	BY	DATE	NO.	BY	DATE
1			3		
2			4		