

TIP PROJECT: U-2714

STATE OF NORTH CAROLINA
DIVISION OF HIGHWAYS

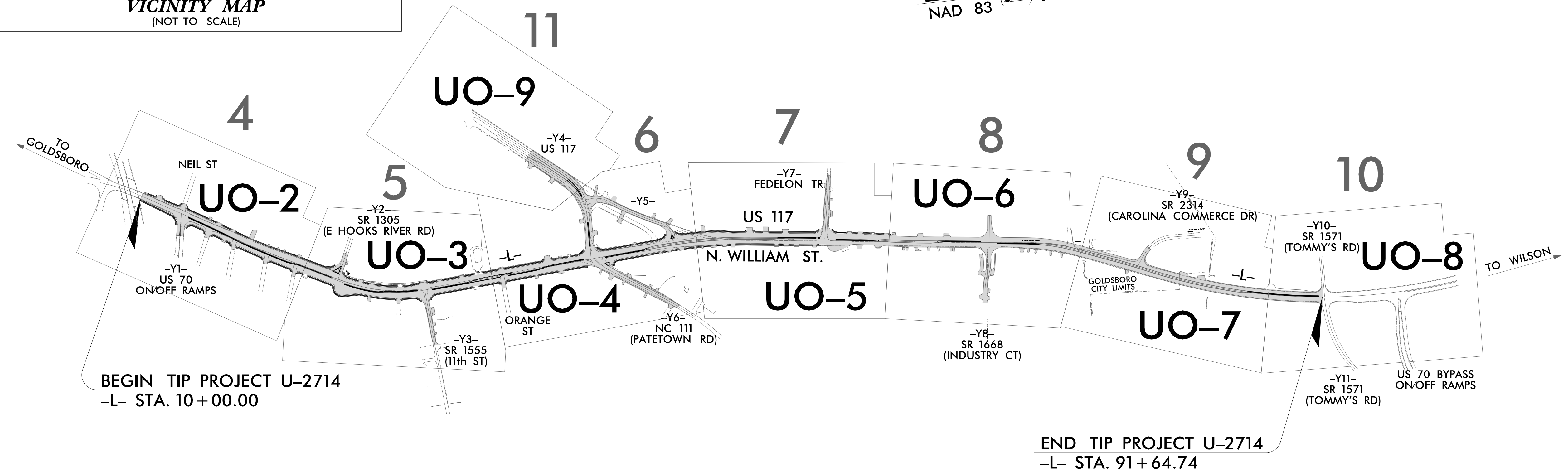
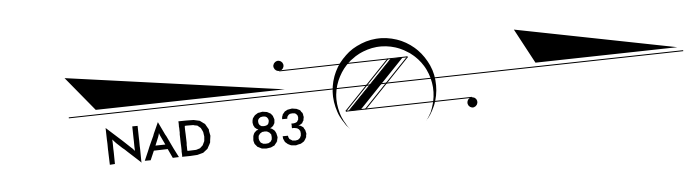
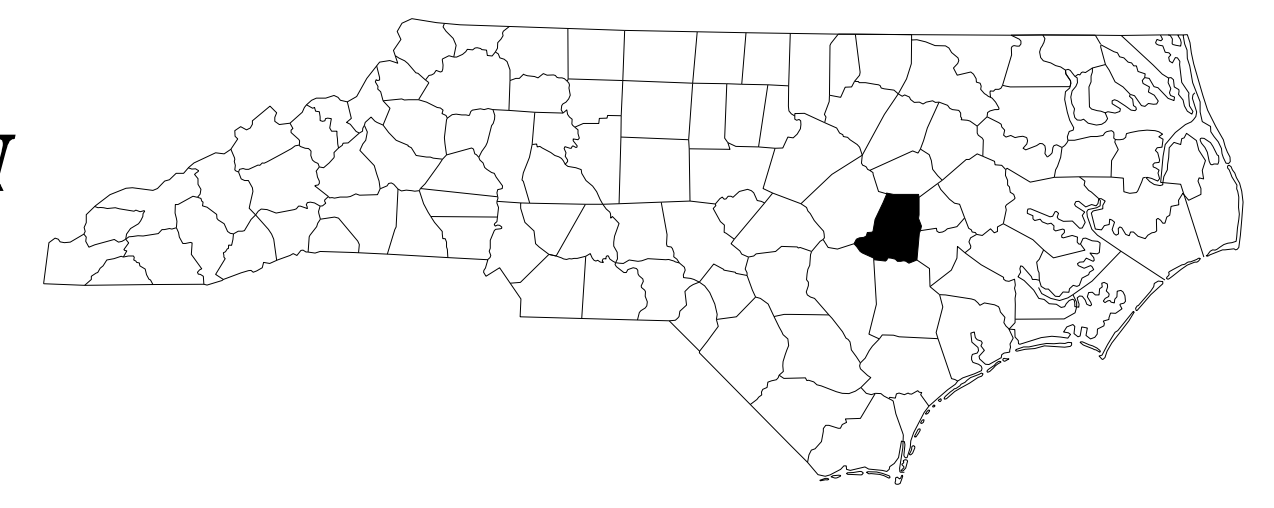
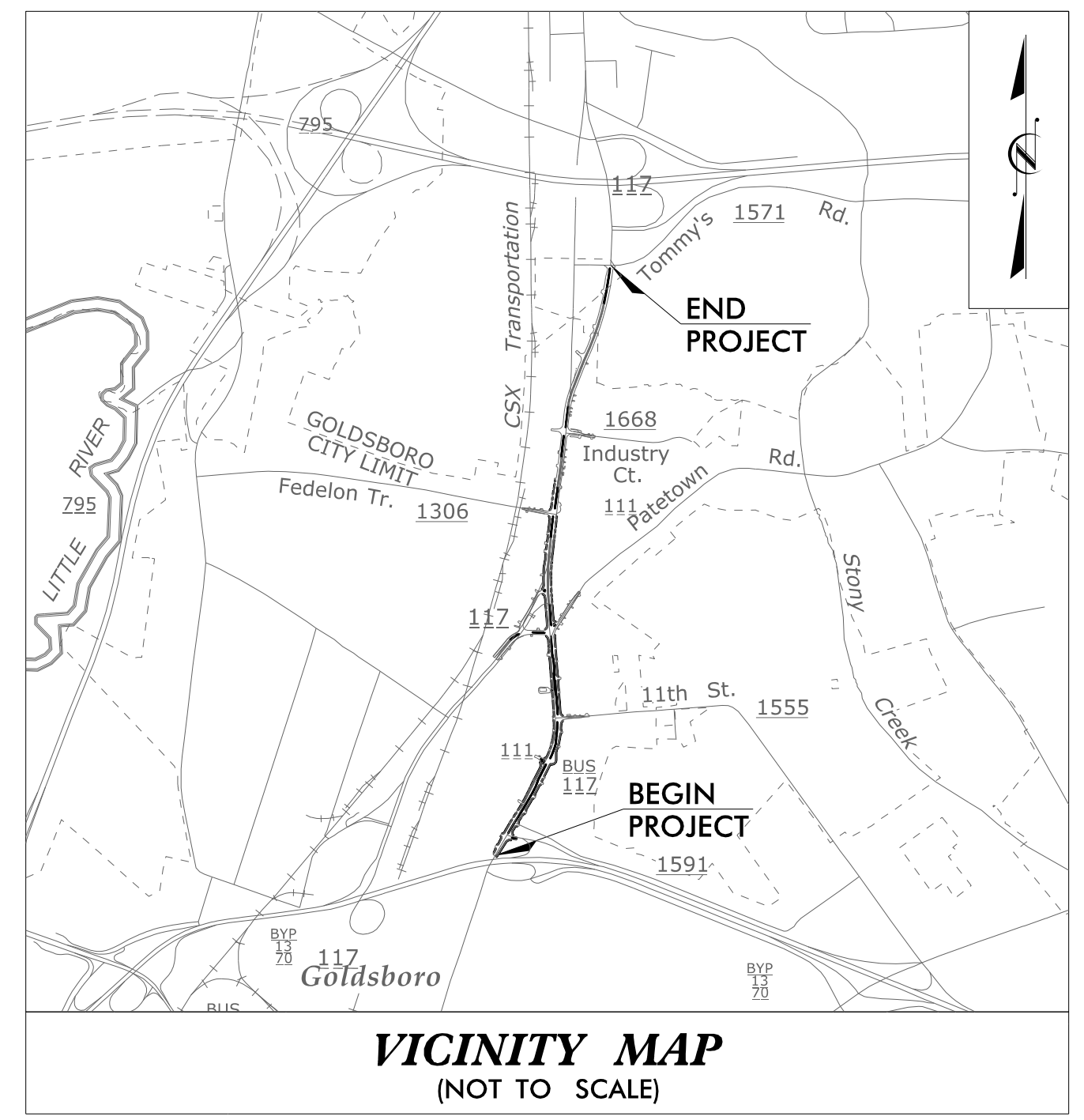
T.I.P. NO.	SHEET NO.
U-2714	UO-1

NOTE:
ALL UTILITY WORK SHOWN ON THIS SHEET IS DONE BY OTHERS.
NO PAYMENT WILL BE MADE TO THE CONTRACTOR FOR UTILITY WORK SHOWN ON THIS SHEET.

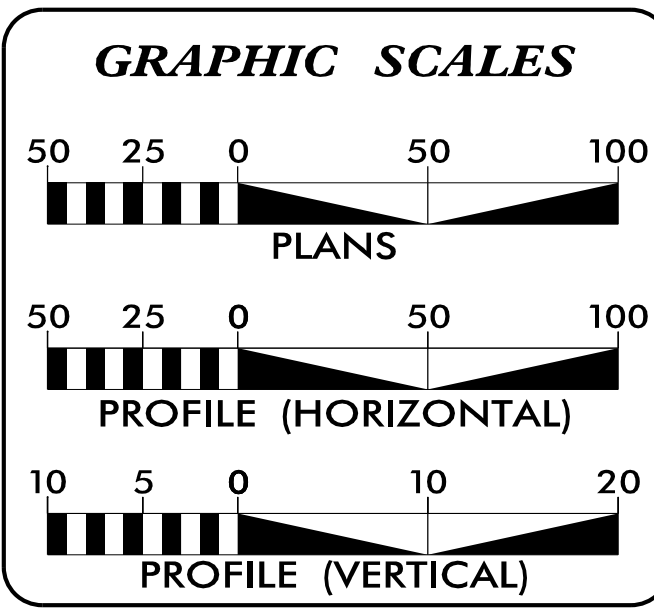
**UTILITIES BY OTHERS PLANS
WAYNE COUNTY**

**LOCATION: US 117A (N. WILLIAMS ST) FROM NORTH OF US 70
TO SR 1571 (TOMMY'S RD)**

**TYPE OF WORK: POWER DISTRIBUTION, GAS DISTRIBUTION
& TELECOM**



CLEARING ON THIS PROJECT SHALL BE PERFORMED TO THE LIMITS ESTABLISHED BY METHOD ____
A PORTION OF THIS PROJECT IS WITHIN THE MUNICIPAL BOUNDARIES OF THE CITY OF GOLDSBORO



INDEX OF SHEETS

SHEET NO.	DESCRIPTION
UO-1	TITLE SHEET
UO-2 THRU UO-9	UBO PLAN SHEETS

UTILITY OWNERS WITH CONFLICTS

(A) POWER DISTRIBUTION - DUKE ENERGY-PROGRESS
(B) GAS DISTRIBUTION - PIEDMONT NATURAL GAS
(C) TELECOM - AT&T
(D) TELECOM - CHARTER COMMUNICATIONS
(E) TELECOM - CITY OF GOLDSBORO

PREPARED IN THE OFFICE OF:

HINDE ENGINEERING
License No. C-2639
401 Harrison Oaks Blvd., Suite 145 Cary, NC 27513
(919)-653-0001

Michael E. Davis	UTILITY COORDINATION PROJECT MANAGER
Bill F. Black	PROJECT UTILITY COORDINATOR
James N. Arnold	PROJECT UTILITY DESIGNER

**DIVISION OF HIGHWAYS
UTILITIES UNIT**
1555 MAIL SERVICES CENTER
RALEIGH NC 27699-1555
PHONE (919) 707-6690
FAX (919) 250-4151

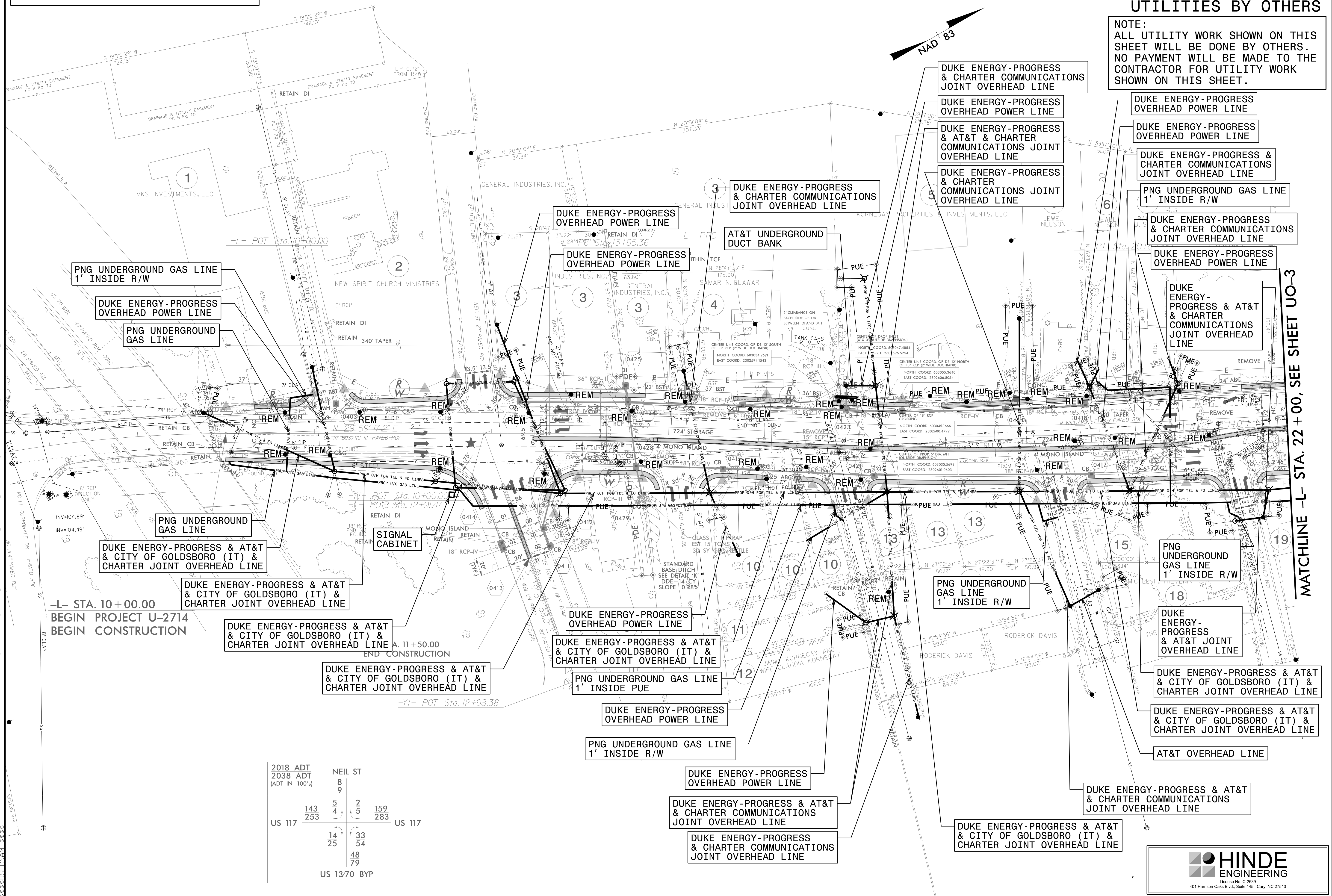
Wendi O. Johnson	DIVISION CONTACT #1
Jerry Page	DIVISION CONTACT #2
Van Johnson	DIVISION CONTACT #3
Matt Clarke	DIVISION CONTACT #4

03-FEB-2020 08:42 S:\Server_Files\PROJECTS\2015\A2015902.00 HDR - U-2714 Wayne County\Design\Utilities\Engineering\UBO\Proj\U-2714_ut_tsh_U001_psh.dgn

UTILITIES BY OTHERS PLAN SHEET UO-2
CORRESPONDS TO ROADWAY PLAN SHEET 4

UTILITIES BY OTHERS

NOTE:
ALL UTILITY WORK SHOWN ON THIS SHEET WILL BE DONE BY OTHERS. NO PAYMENT WILL BE MADE TO THE CONTRACTOR FOR UTILITY WORK SHOWN ON THIS SHEET.



-L- STA. 10 + 00.00
BEGIN PROJECT U-2714
BEGIN CONSTRUCTION

DUKE ENERGY-PROGRESS & AT&T
& CITY OF GOLDSBORO (IT) &
CHARTER JOINT OVERHEAD LINE

DUKE ENERGY-PROGRESS & AT&T
& CITY OF GOLDSBORO (IT) &
CHARTER JOINT OVERHEAD LINE

DUKE ENERGY-PROGRESS & AT&T
& CITY OF GOLDSBORO (IT) &
CHARTER JOINT OVERHEAD LINE

DUKE ENERGY-PROGRESS & AT&T
& CITY OF GOLDSBORO (IT) &
CHARTER JOINT OVERHEAD LINE

PNG UNDERGROUND GAS LINE
1' INSIDE R/W

DUKE ENERGY-PROGRESS
OVERHEAD POWER LINE

PNG UNDERGROUND GAS LINE
1' INSIDE R/W

DUKE ENERGY-PROGRESS
OVERHEAD POWER LINE

DUKE ENERGY-PROGRESS & AT&T
& CHARTER COMMUNICATIONS
JOINT OVERHEAD LINE

DUKE ENERGY-PROGRESS
& CHARTER COMMUNICATIONS
JOINT OVERHEAD LINE

PNG UNDERGROUND
GAS LINE
1' INSIDE R/W

PNG UNDERGROUND
GAS LINE
1' INSIDE R/W

DUKE ENERGY-
PROGRESS
& AT&T JOINT
OVERHEAD LINE

DUKE ENERGY-PROGRESS & AT&T
& CITY OF GOLDSBORO (IT) &
CHARTER JOINT OVERHEAD LINE

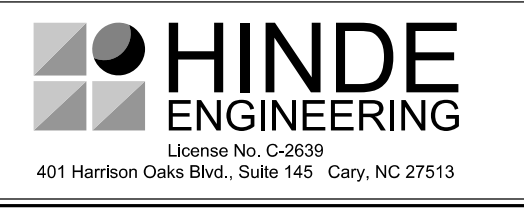
DUKE ENERGY-PROGRESS & AT&T
& CITY OF GOLDSBORO (IT) &
CHARTER JOINT OVERHEAD LINE

DUKE ENERGY-PROGRESS & AT&T
& CITY OF GOLDSBORO (IT) &
CHARTER JOINT OVERHEAD LINE

DUKE ENERGY-PROGRESS & AT&T
& CHARTER COMMUNICATIONS
JOINT OVERHEAD LINE

DUKE ENERGY-PROGRESS & AT&T
& CITY OF GOLDSBORO (IT) &
CHARTER JOINT OVERHEAD LINE

2018 ADT	NEIL ST		
2038 ADT	8	9	
(ADT IN 100's)			
	5	2	159
	4	5	283
US 117	143	253	
	14	33	
	25	54	
		48	
		79	
	US 1370 BYP		

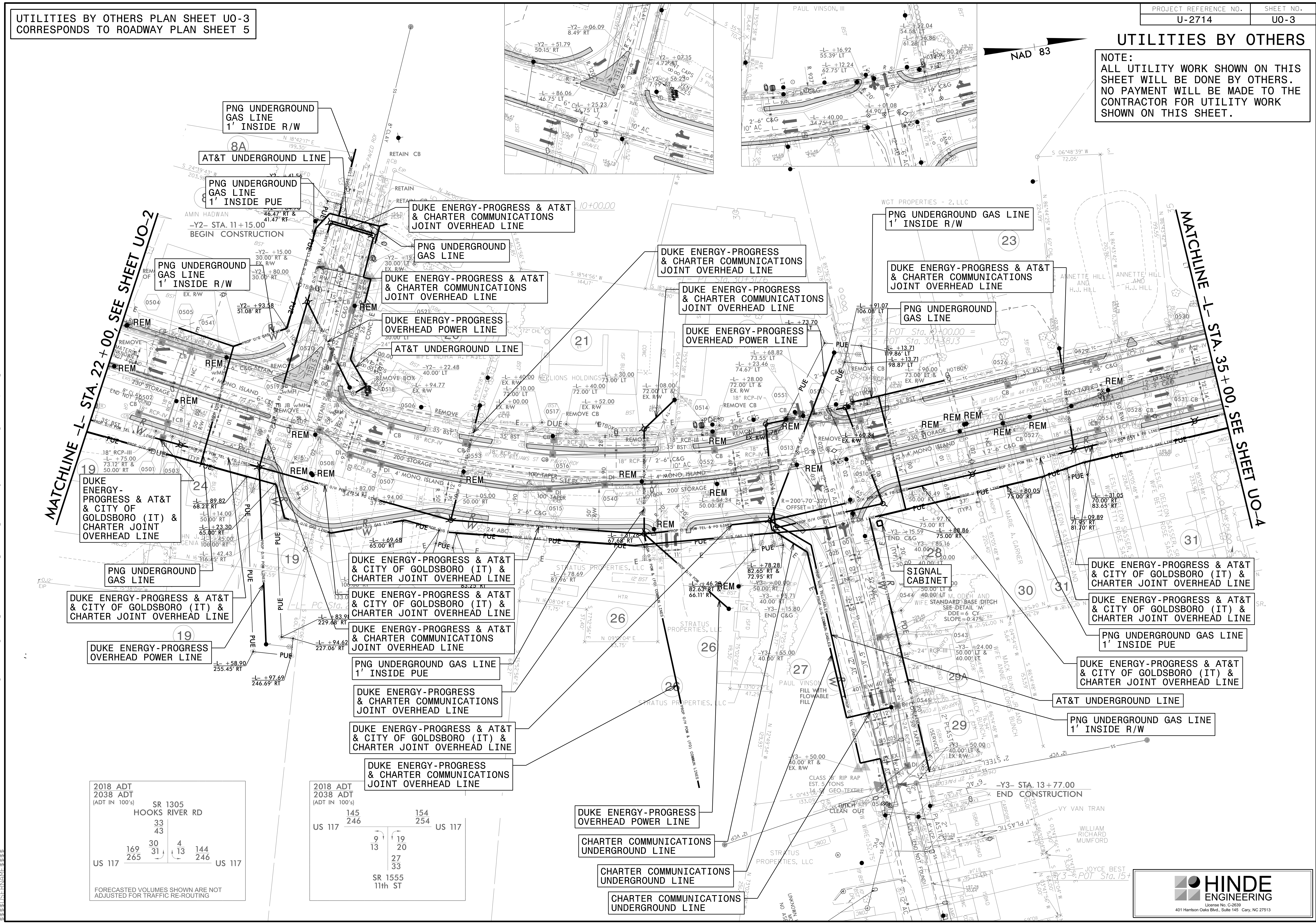


23-FEB-2020 08:56 C:\PROJECTS\2015\A2015902.00 HDR - U-2714 Wayne County\Utilities\Engineering\UBO\Proj\U-2714-ut-ryd\4_U002_psh.dgn
 3:58:51 PM

UTILITIES BY OTHERS PLAN SHEET UO-3
CORRESPONDS TO ROADWAY PLAN SHEET 5

UTILITIES BY OTHERS

NOTE:
ALL UTILITY WORK SHOWN ON THIS SHEET WILL BE DONE BY OTHERS. NO PAYMENT WILL BE MADE TO THE CONTRACTOR FOR UTILITY WORK SHOWN ON THIS SHEET.



MATCHLINE -L- STA. 22+00, SEE SHEET UO-2

MATCHLINE -L- STA. 35+00, SEE SHEET UO-4

2018 ADT
2038 ADT
(ADT IN 100's)

SR 1305 HOOKS RIVER RD			
	33		
	43		
169	30	4	144
265	31	13	246

US 117

FORECASTED VOLUMES SHOWN ARE NOT ADJUSTED FOR TRAFFIC RE-ROUTING

2018 ADT
2038 ADT
(ADT IN 100's)

145	154
246	254

US 117

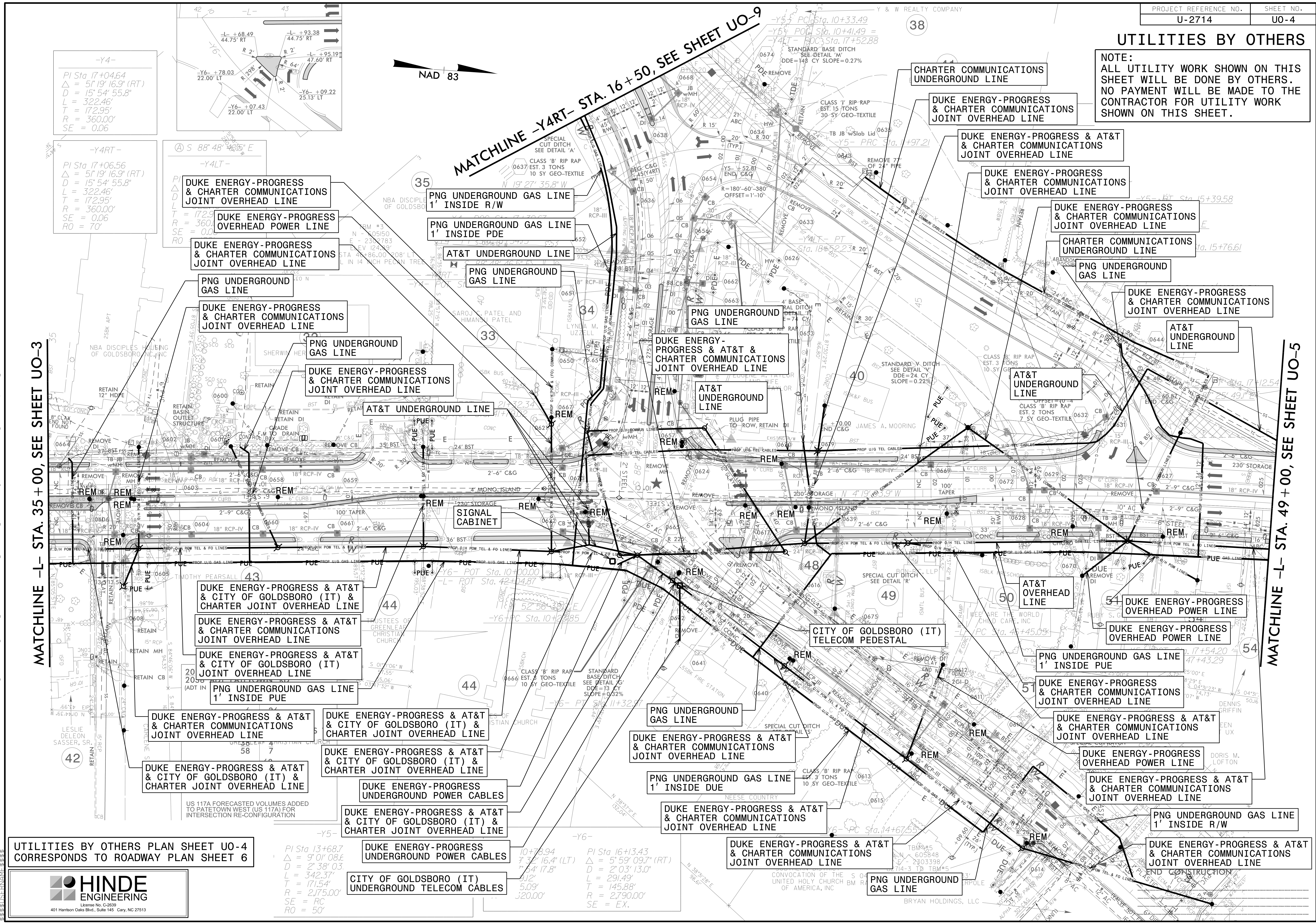
9	19
13	20
	27
	33

SR 1555
11th ST

03-FEB-2020 08:56 PROJECTS\2015\A2015902.00 HDR - U-2714 Wayne County\Design\Utilities\Engineering\UBO\Proj\U-2714-ut_rdy_b_U003_psh.dgn

UTILITIES BY OTHERS

NOTE:
ALL UTILITY WORK SHOWN ON THIS SHEET WILL BE DONE BY OTHERS. NO PAYMENT WILL BE MADE TO THE CONTRACTOR FOR UTILITY WORK SHOWN ON THIS SHEET.



-Y4-
 $PI Sta 17+04.64$
 $\Delta = 51' 19" 16.9" (RT)$
 $D = 15' 54" 55.8"$
 $L = 322.46'$
 $T = 172.95'$
 $R = 360.00'$
 $SE = 0.06$

-Y4RT-
 $PI Sta 17+06.56$
 $\Delta = 51' 19" 16.9" (RT)$
 $D = 15' 54" 55.8"$
 $L = 322.46'$
 $T = 172.95'$
 $R = 360.00'$
 $RO = 70'$

DUKE ENERGY-PROGRESS & CHARTER COMMUNICATIONS JOINT OVERHEAD LINE

DUKE ENERGY-PROGRESS OVERHEAD POWER LINE

DUKE ENERGY-PROGRESS & CHARTER COMMUNICATIONS JOINT OVERHEAD LINE

PNG UNDERGROUND GAS LINE

DUKE ENERGY-PROGRESS & CHARTER COMMUNICATIONS JOINT OVERHEAD LINE

PNG UNDERGROUND GAS LINE

DUKE ENERGY-PROGRESS & CHARTER COMMUNICATIONS JOINT OVERHEAD LINE

PNG UNDERGROUND GAS LINE

DUKE ENERGY-PROGRESS & CHARTER COMMUNICATIONS JOINT OVERHEAD LINE

AT&T UNDERGROUND LINE

DUKE ENERGY-PROGRESS & AT&T & CITY OF GOLDSBORO (IT) & CHARTER JOINT OVERHEAD LINE

DUKE ENERGY-PROGRESS & AT&T & CHARTER COMMUNICATIONS JOINT OVERHEAD LINE

DUKE ENERGY-PROGRESS & AT&T & CITY OF GOLDSBORO (IT) JOINT OVERHEAD LINE

PNG UNDERGROUND GAS LINE 1' INSIDE PUE

DUKE ENERGY-PROGRESS & AT&T & CHARTER COMMUNICATIONS JOINT OVERHEAD LINE

DUKE ENERGY-PROGRESS & AT&T & CITY OF GOLDSBORO (IT) & CHARTER JOINT OVERHEAD LINE

DUKE ENERGY-PROGRESS & AT&T & CHARTER COMMUNICATIONS JOINT OVERHEAD LINE

DUKE ENERGY-PROGRESS UNDERGROUND POWER CABLES

DUKE ENERGY-PROGRESS & AT&T & CHARTER COMMUNICATIONS JOINT OVERHEAD LINE

DUKE ENERGY-PROGRESS & AT&T & CHARTER COMMUNICATIONS JOINT OVERHEAD LINE

CITY OF GOLDSBORO (IT) UNDERGROUND TELECOM CABLES

NAD 83

MATCHLINE -Y4RT- STA. 16+50, SEE SHEET UO-9

MATCHLINE -L- STA. 35+00, SEE SHEET UO-3

MATCHLINE -L- STA. 49+00, SEE SHEET UO-5

UTILITIES BY OTHERS PLAN SHEET U0-4 CORRESPONDS TO ROADWAY PLAN SHEET 6

HINDE ENGINEERING
 License No. C-2009
 401 Harrison Oaks Blvd., Suite 145 Cary, NC 27513

$PI Sta 13+68.7$
 $\Delta = 9' 01" 08.6'$
 $D = 2' 38" 03'$
 $L = 342.37'$
 $T = 171.54'$
 $R = 2,175.00'$
 $SE = RC$
 $RO = 50'$

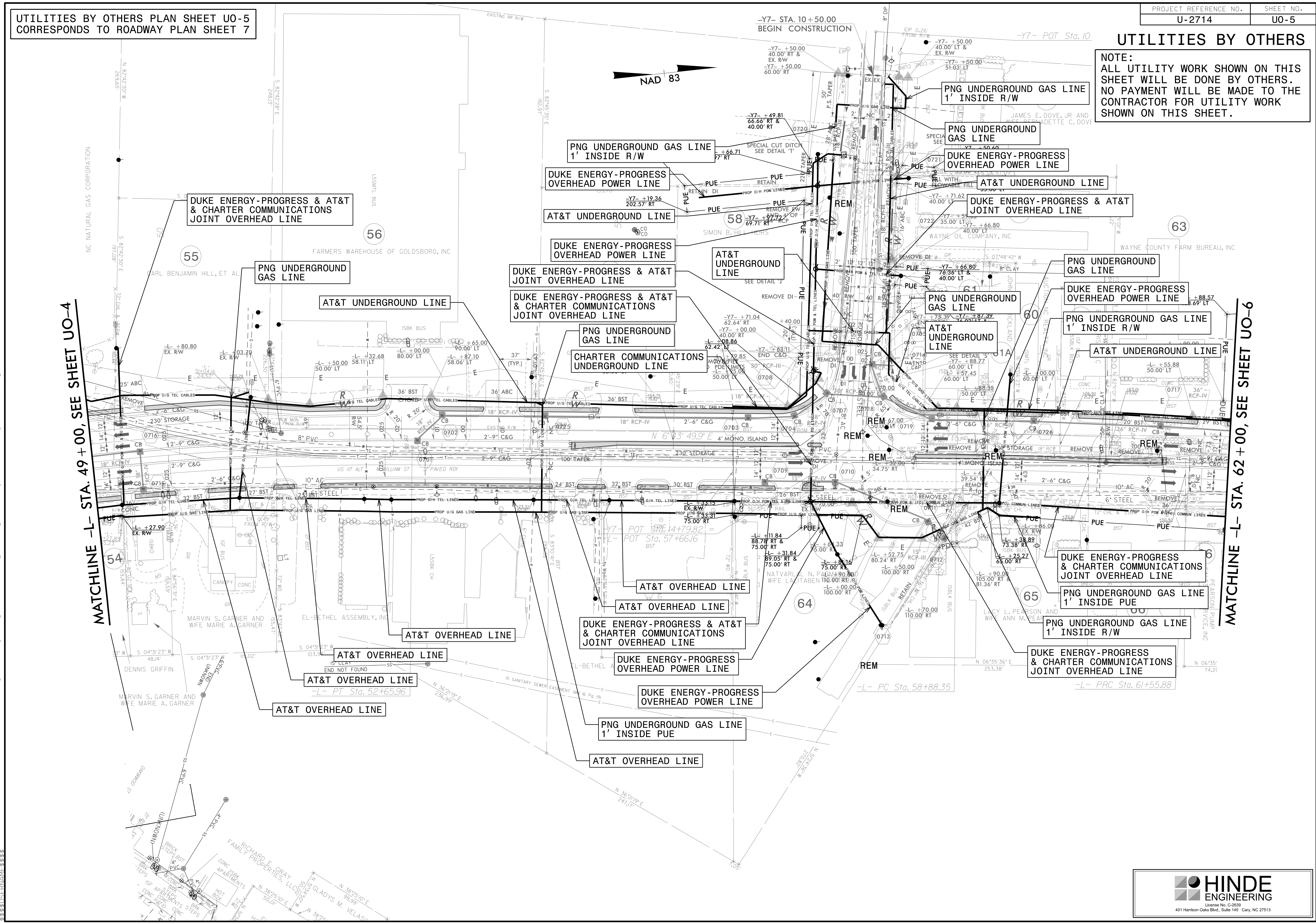
$PI Sta 16+13.43$
 $\Delta = 5' 59" 09.7" (RT)$
 $D = 2' 03" 13.0"$
 $L = 291.49'$
 $T = 145.88'$
 $R = 2,790.00'$
 $SE = EX.$

23-FEB-2020 08:47 PROJECTS\2015\A2015902.00 HDR - U-2714 Wayne County\Design\Utilities\Engineering\UBO-Proj-U-2714-ut-rdyf6_u004_psh.dgn

UTILITIES BY OTHERS PLAN SHEET UO-5
CORRESPONDS TO ROADWAY PLAN SHEET 7

UTILITIES BY OTHERS

NOTE:
ALL UTILITY WORK SHOWN ON THIS SHEET WILL BE DONE BY OTHERS. NO PAYMENT WILL BE MADE TO THE CONTRACTOR FOR UTILITY WORK SHOWN ON THIS SHEET.



MATCHLINE -L- STA. 49 + 00, SEE SHEET UO-4

MATCHLINE -L- STA. 62 + 00, SEE SHEET UO-6



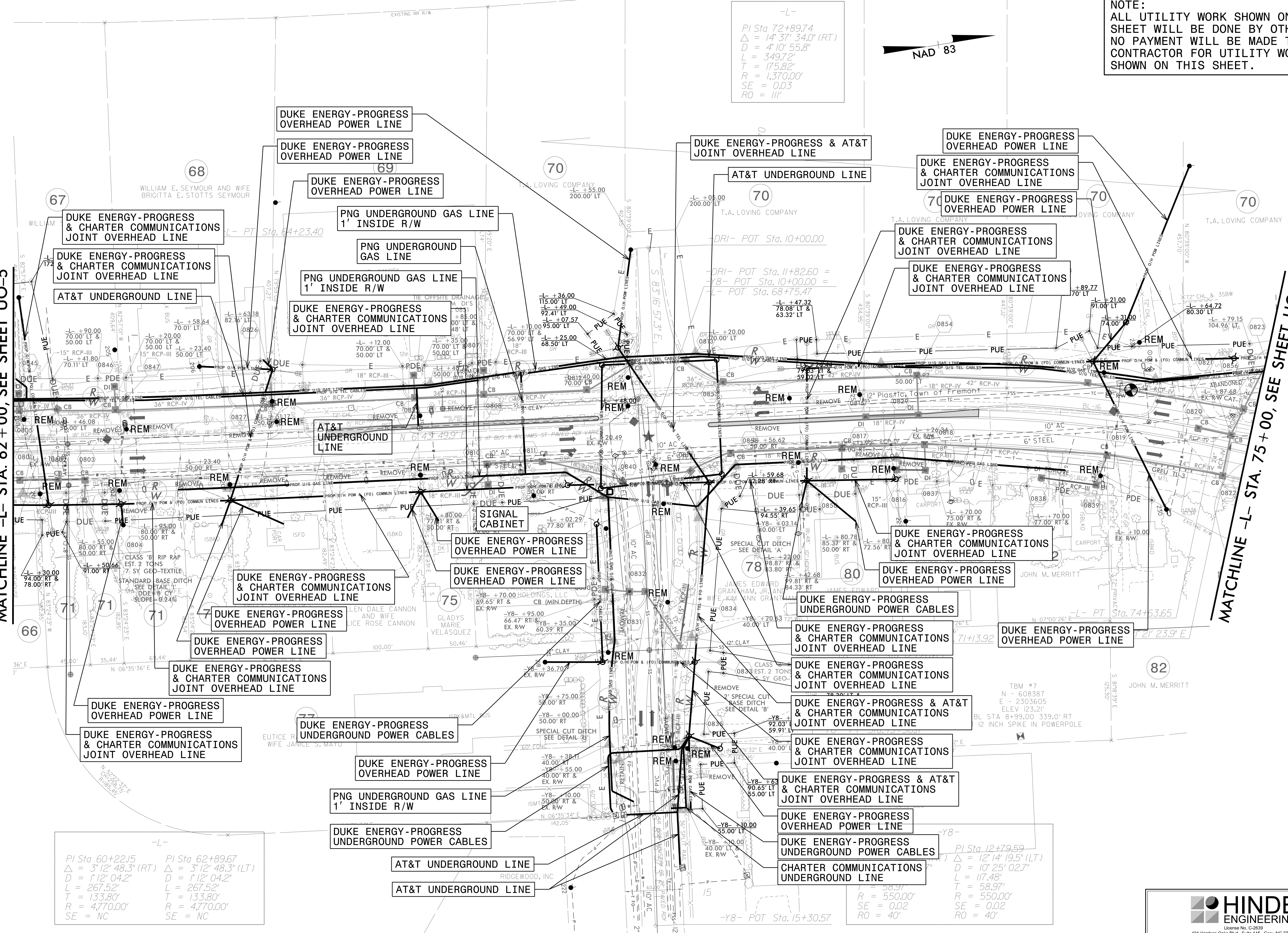
03.FEB-2020 08:57
 PROJECTS\2015\A2015902.00 HDR - U-2714 Wayne County\Utilities\Engineering\UBO\Proj\U-2714-ut-rdy7_U005_psh.dgn
 3:38:51 PM

UTILITIES BY OTHERS

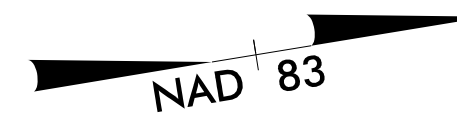
NOTE:
ALL UTILITY WORK SHOWN ON THIS SHEET WILL BE DONE BY OTHERS. NO PAYMENT WILL BE MADE TO THE CONTRACTOR FOR UTILITY WORK SHOWN ON THIS SHEET.

MATCHLINE -L- STA. 62 + 00, SEE SHEET UO-5

MATCHLINE -L- STA. 75 + 00, SEE SHEET UO-7



-L-
PI Sta 72+89.74
 $\Delta = 14^{\circ} 37' 34.0''$ (RT)
D = 4'10" 55.8"
L = 349.72'
T = 175.82'
R = 1,370.00'
SE = 0.03
RO = 111'



-L-
PI Sta 60+22.15
 $\Delta = 3^{\circ} 12' 48.3''$ (RT)
D = 1'12" 04.2"
L = 267.52'
T = 133.80'
R = 4,770.00'
SE = NC

-L-
PI Sta 62+89.67
 $\Delta = 3^{\circ} 12' 48.3''$ (LT)
D = 1'12" 04.2"
L = 267.52'
T = 133.80'
R = 4,770.00'
SE = NC

-L-
PI Sta 12+79.59
 $\Delta = 12^{\circ} 14' 19.5''$ (LT)
D = 10' 25' 02.7"
L = 117.48'
T = 58.97'
R = 550.00'
SE = 0.02
RO = 40'

03.FEB.2020 08:57
 PROJECTS\2015\A2015902.00 HDR - U-2714 Wayne County\Design\Utilities\Engineering\UB0\Proj\U-2714-ut_rdy8_U006_psh.dgn

UTILITIES BY OTHERS PLAN SHEET UO-7
CORRESPONDS TO ROADWAY PLAN SHEET 9

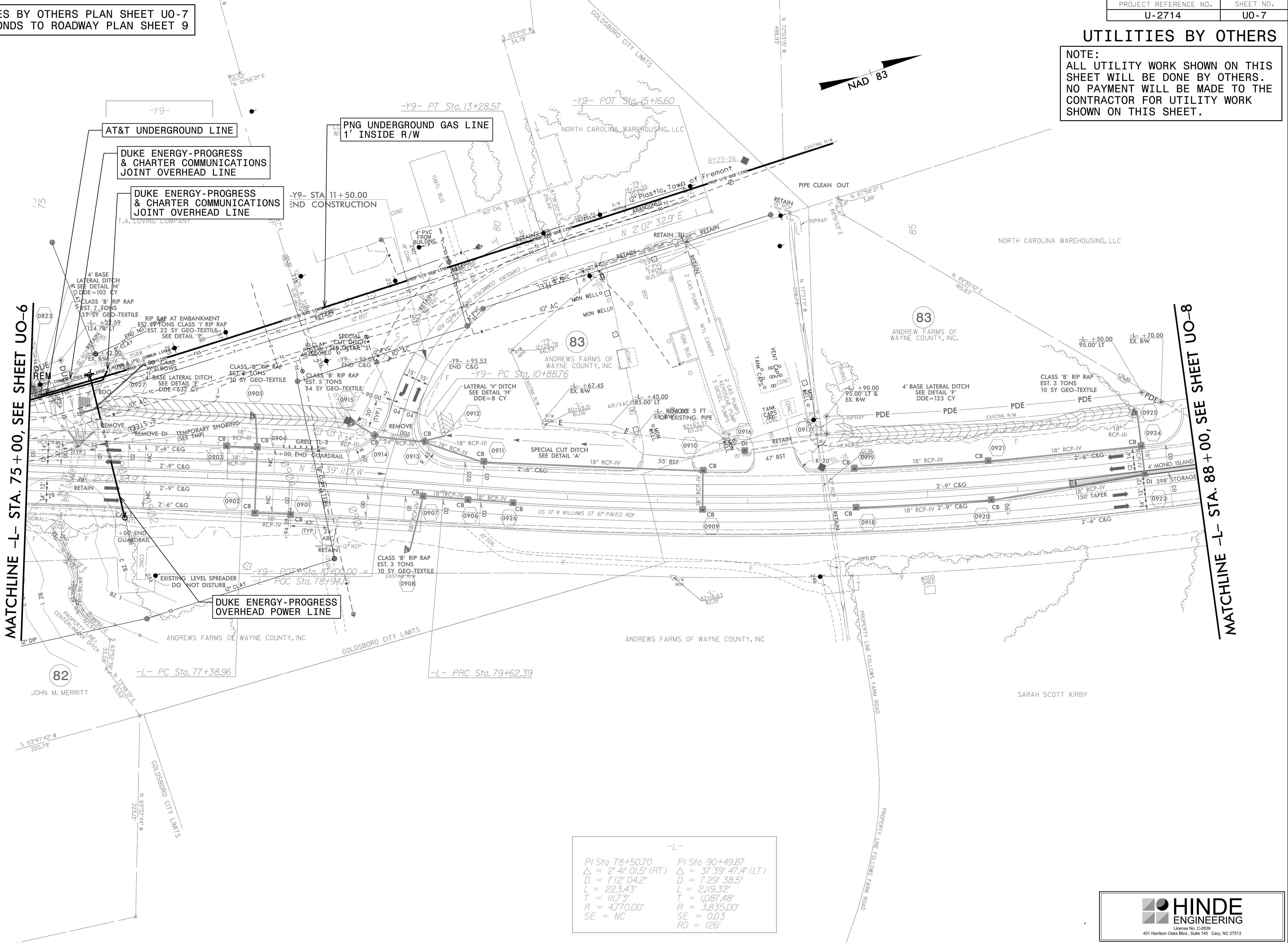
PROJECT REFERENCE NO. U-2714
SHEET NO. UO-7

UTILITIES BY OTHERS

NOTE:
ALL UTILITY WORK SHOWN ON THIS SHEET WILL BE DONE BY OTHERS. NO PAYMENT WILL BE MADE TO THE CONTRACTOR FOR UTILITY WORK SHOWN ON THIS SHEET.

MATCHLINE -L- STA. 75 + 00, SEE SHEET UO-6

MATCHLINE -L- STA. 88 + 00, SEE SHEET UO-8



-L-	
PI Sta 78+50.70	PI Sta 90+49.87
$\Delta = 2' 4' 01.5"$ (RT)	$\Delta = 3' 39' 47.4"$ (LT)
$D = 1' 12' 04.2"$	$D = 1' 29' 38.5"$
$L = 223.43'$	$L = 2,119.32'$
$T = 111.73'$	$T = 1,087.48'$
$R = 4,770.00'$	$R = 3,835.00'$
$SE = NC$	$SE = 0.03$
	$RO = 126'$

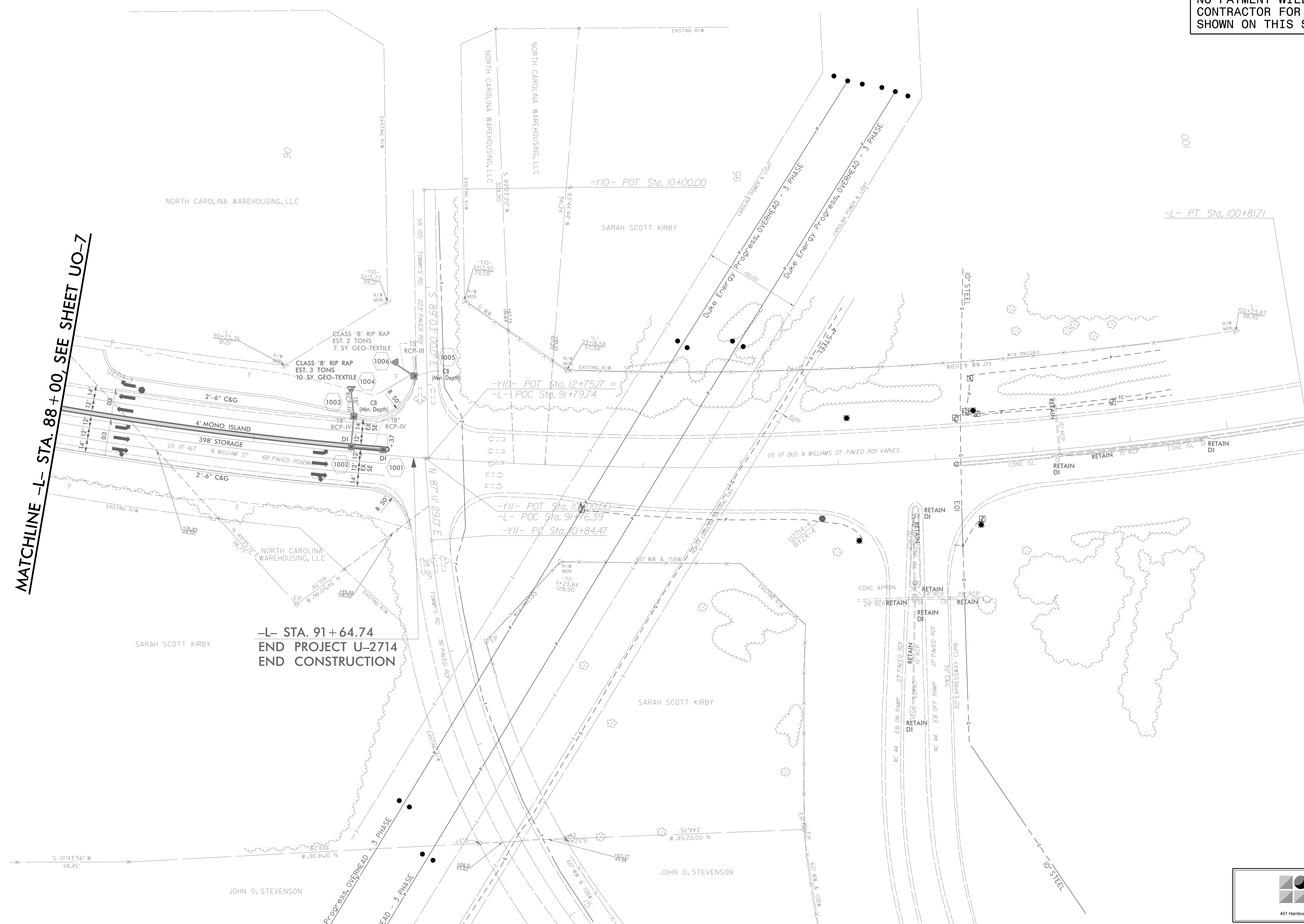
23.FEB-2020 08:58 PROJECTS\2015\A2015902.00 HDR - U-2714 Wayne County\Design\Utilities\Engineering\UBO\ProJ_U-2714-ut-rdy_9_UD07_psh.dgn

UTILITIES BY OTHERS

NOTE:
ALL UTILITY WORK SHOWN ON THIS SHEET WILL BE DONE BY OTHERS. NO PAYMENT WILL BE MADE TO THE CONTRACTOR FOR UTILITY WORK SHOWN ON THIS SHEET.



MATCHLINE -L- STA. 88+00, SEE SHEET U0-7



-L- STA. 91+64.74
END PROJECT U-2714
END CONSTRUCTION

03.FEB.2020 08:58
 C:\PROJECTS\2015\A2015902.00 HDR - U-2714 Wayne County\Design\Utilities\Engineering\UBO\Proj\U-2714...rd\j0_U008_psh.dgn
 33.81111111111111

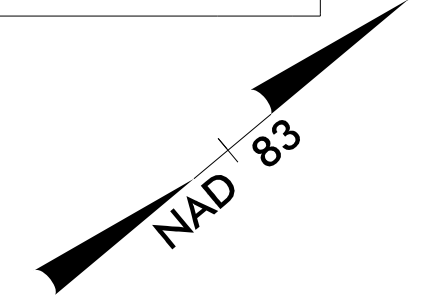
UTILITIES BY OTHERS PLAN SHEET UO-9
CORRESPONDS TO ROADWAY PLAN SHEET 11

PROJECT REFERENCE NO. U-2714
SHEET NO. UO-9

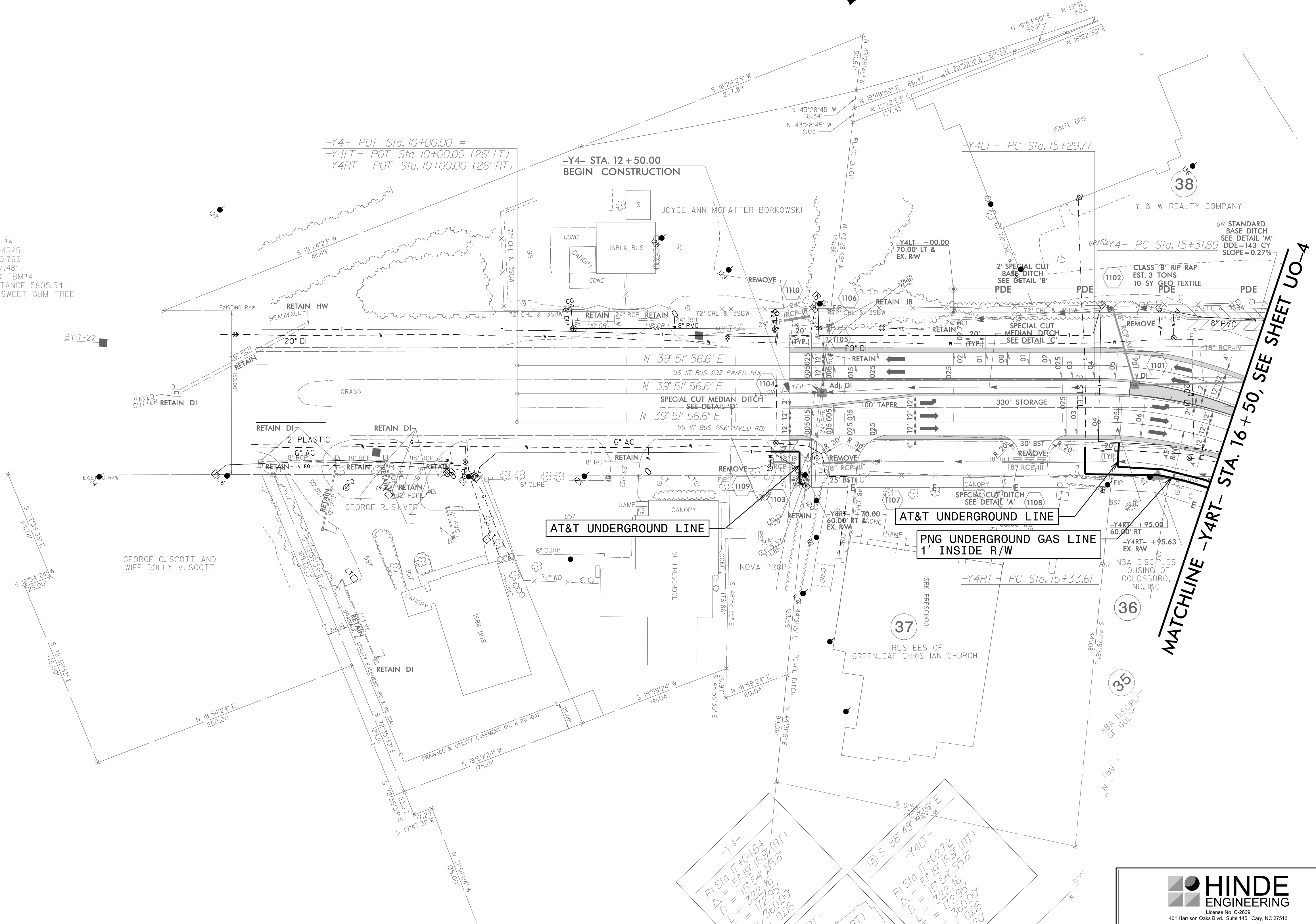
UTILITIES BY OTHERS

NOTE:
ALL UTILITY WORK SHOWN ON THIS SHEET WILL BE DONE BY OTHERS. NO PAYMENT WILL BE MADE TO THE CONTRACTOR FOR UTILITY WORK SHOWN ON THIS SHEET.

-Y4RT-	-Y4-	-Y4LT-
PI Sta 17+06.56	PI Sta 17+04.64	PI Sta 17+02.72
$\Delta = 51' 19" 16.9'$ (RT)	$\Delta = 51' 19" 16.9'$ (RT)	$\Delta = 51' 19" 16.9'$ (RT)
D = 15' 54' 55.8"	D = 15' 54' 55.8"	D = 15' 54' 55.8"
L = 322.46'	L = 322.46'	L = 322.46'
T = 172.95'	T = 172.95'	T = 172.95'
R = 360.00'	R = 360.00'	R = 360.00'
SE = 0.06	SE = 0.06	SE = 0.06
RO = 70'		RO = 120'



TBM #4
N = 604525
E = 2301769
ELEV 117.48'
U2714-3 TO TBM#4
S 19°57'06.98" W DISTANCE 5805.54'
BM NAIL IN 20 INCH SWEET GUM TREE



MATCHLINE -Y4RT- STA. 16 + 50, SEE SHEET UO-4

31.FEB-2020 08:58 PROJECTS\2015\A2015902.00 HDR - U-2714 Wayne County\Design\Utilities\Engineering\UBO\Proj\U-2714..._t...rd\j11_U009_psh.dgn

