

PLOT DRIVER: NCD0T_.pdf_color_eng_50.plt
 USER: CHARNDEN
 FILE: p:\w\p\p\p\PA01\SouthEgSt-.Tampca\Documents\000166\CON0104978\CON0105025\000000000273731\6.0.CAD.BIM\6.2.WorK_In_Progress\U-2714_NCD0T_File_Structure\Trffc\ Pavement_Markings\U2714_PM_PMP-01.dgn

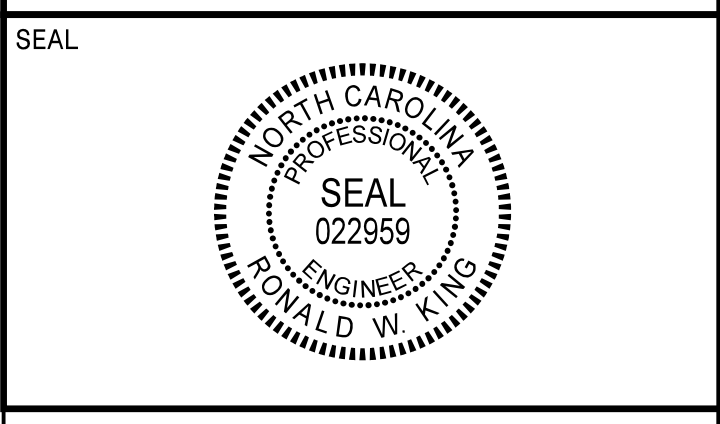
CONTRACT: C204131 T.I.P.: U-2714

**STATE OF NORTH CAROLINA
 DEPARTMENT OF TRANSPORTATION**

HDR HDR Engineering, Inc. of the Carolinas
 555 Fayetteville St, Suite 900 Raleigh, N.C. 27601
 N.C.B.E.L.S. License Number: F-0116

TIP NO. U-2714	SHEET NO. PMP - 1
--------------------------	-----------------------------

APPROVED: *Ron King*
 DATE: 1/30/2020



**DOCUMENT NOT CONSIDERED FINAL
 UNLESS ALL SIGNATURES COMPLETED**

**PAVEMENT MARKING PLAN
 WAYNE COUNTY**

**LOCATION: US 117 (N. WILLIAM ST) FROM NORTH OF US 70
 TO SR 1571 (TOMMY'S RD)**

ROADWAY STANDARD DRAWING

THE FOLLOWING ROADWAY STANDARDS AS APPEAR IN "ROADWAY STANDARD DRAWINGS" - PROJECT SERVICES UNIT - N.C. DEPARTMENT OF TRANSPORTATION - RALEIGH, N.C., DATED JANUARY 2018 ARE APPLICABLE TO THIS PROJECT AND BY REFERENCE HEREBY ARE CONSIDERED A PART OF THESE PLANS:

STD. NO.	TITLE
1205.01	PAVEMENT MARKINGS - LINE TYPES AND OFFSETS
1205.02	PAVEMENT MARKINGS - TWO-LANE AND MULTILANE ROADWAYS
1205.04	PAVEMENT MARKINGS - INTERSECTIONS
1205.05	PAVEMENT MARKINGS - TURN LANES
1205.07	PAVEMENT MARKINGS - PEDESTRIAN CROSSWALKS
1205.08	PAVEMENT MARKINGS - SYMBOLS AND WORD MESSAGES
1205.09	PAVEMENT MARKINGS - PAINTED ISLANDS
1205.11	PAVEMENT MARKINGS - RAILROAD CROSSINGS
1250.01	RAISED PAVEMENT MARKERS - INSTALLATION SPACING
1251.01	RAISED PAVEMENT MARKERS - PERMANENT AND TEMPORARY
1253.01	RAISED PAVEMENT MARKERS - SNOWPLOWABLE
1261.01	GUARDRAIL AND BARRIER DELINEATORS - INSTALLATION SPACING
1261.02	GUARDRAIL AND BARRIER DELINEATORS - TYPES AND MOUNTING
1262.01	GUARDRAIL END DELINEATION
1264.01	OBJECT MARKERS - TYPES
1264.02	OBJECT MARKERS - INSTALLATION

INDEX

SHEET NO.	DESCRIPTION
PMP-1	PAVEMENT MARKING PLAN TITLE, GENERAL NOTES, AND ROADWAY STANDARD DRAWINGS
PMP-1A	PAVEMENT MARKING SCHEDULE
PMP-2 THRU 9	PAVEMENT MARKING DETAILS

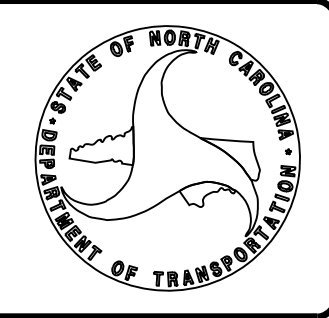
GENERAL NOTES

- THE FOLLOWING GENERAL NOTES APPLY AT ALL TIMES FOR THE DURATION OF THE CONSTRUCTION PROJECT, EXCEPT WHEN OTHERWISE NOTED IN THE PLAN, OR DIRECTED BY THE ENGINEER.
- A) INSTALL PAVEMENT MARKINGS AND PAVEMENT MARKERS ON THE FINAL SURFACE AS FOLLOWS:

ROAD NAME	MARKING	MARKER
ALL ROADS	THERMOPLASTIC	SNOWPLOWABLE OR MATCH EXISTING
 - B) TIE PROPOSED PAVEMENT MARKING LINES TO EXISTING PAVEMENT MARKING LINES.
 - C) REMOVE/REPLACE ANY CONFLICTING/DAMAGED PAVEMENT MARKINGS AND MARKERS.
 - D) PASSING ZONES WILL BE DETERMINED IN THE FIELD AND MUST BE APPROVED BY THE ENGINEER.
 - E) STOP BAR LOCATION AT NON-SIGNALIZED INTERSECTIONS MAY BE ADJUSTED AS DIRECTED BY THE ENGINEER.
 - F) UNLESS OTHERWISE SPECIFIED, HEATED-IN-PLACE THERMOPLASTIC MAY BE USED IN LIEU OF EXTRUDED THERMOPLASTIC FOR STOP BARS, SYMBOLS, CHARACTERS AND DIAGONALS. IF HEATED-IN-PLACE IS USED, IT SHALL BE PAID FOR USING THE EXTRUDED THERMOPLASTIC PAY ITEM.
 - G) SEE ROADWAY PLANS FOR ALTERNATE CURB RAMP DESIGNS WHEN INDICATED ON PAVEMENT MARKING DETAIL SHEETS.

PLAN PREPARED FOR: N.C.D.O.T. SIGNING AND DELINEATION UNIT

A. ALQUDWAH, P.E. SIGNING & DELINEATION REGIONAL ENGINEER
 W. JOHNSON SIGNING & DELINEATION PROJECT DESIGN ENGINEER/TECHNICIAN



PLAN PREPARED BY: HDR ENGINEERING

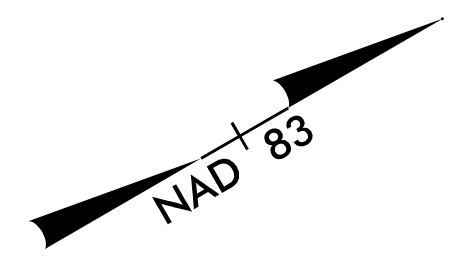
RON KING, P.E. SIGNING & DELINEATION PROJECT ENGINEER
 CHRIS HARNDEN SIGNING & DELINEATION PROJECT DESIGN TECHNICIAN

APPROVED: *Ken King*

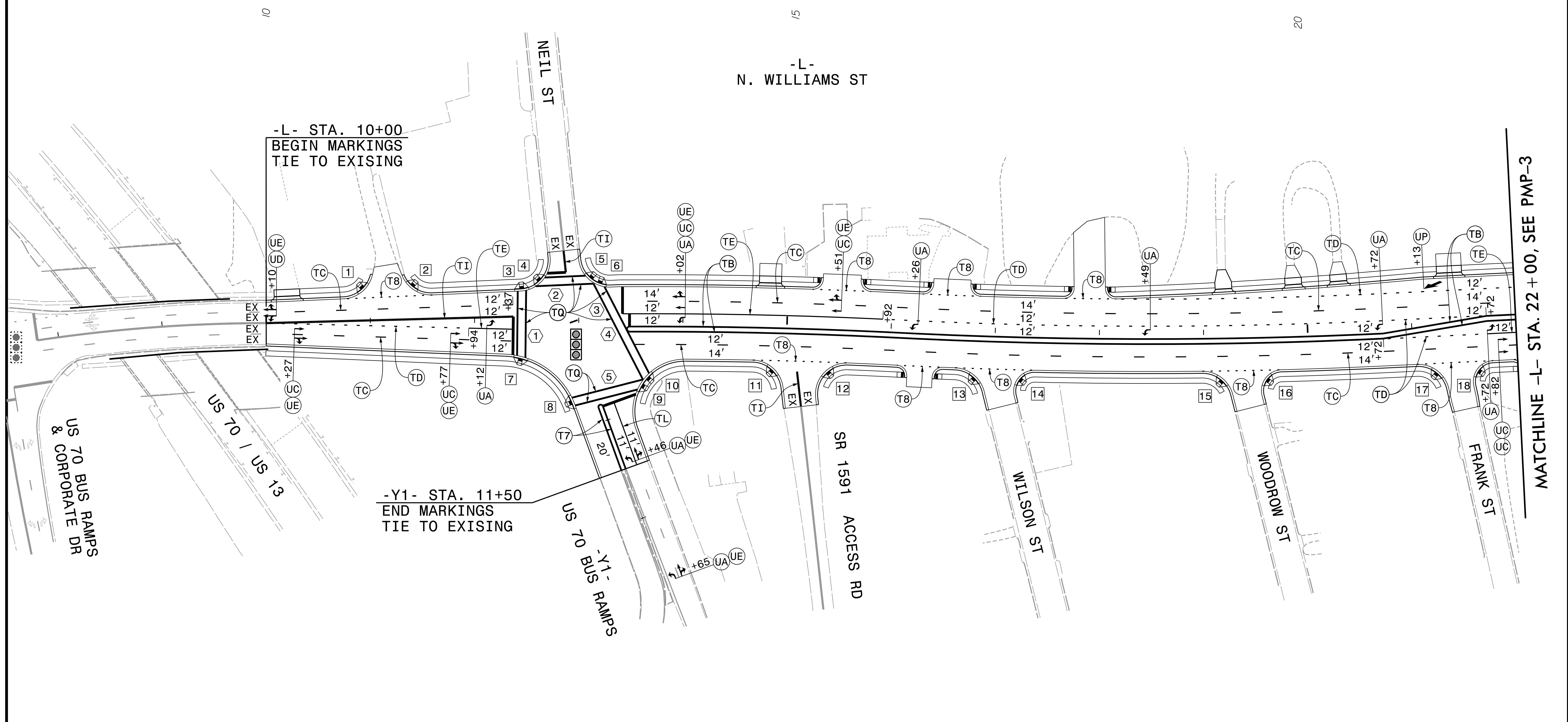
DATE: 1/30/2020



DOCUMENT NOT CONSIDERED FINAL
UNLESS ALL SIGNATURES COMPLETED



CURB RAMP LOCATIONS (CENTER OF RAMP AT FACE OF CURB)			
1	-L- STA. 10+92.75, 33.50' LT	10	-L- STA. 13+66.07, 52.86' RT
2	-L- STA. 11+40.14, 35.56' LT	11	-L- STA. 14+87.04, 44.25' RT
3	-L- STA. 12+45.32, 32.68' LT	12	-L- STA. 15+40.61, 44.25' RT
4	-L- STA. 12+62.60, 40.87' LT	13	-L- STA. 16+81.53, 44.19' RT
5	-L- STA. 13+11.63, 42.99' LT	14	-L- STA. 17+24.71, 43.93' RT
6	-L- STA. 13+20.17, 38.03' LT	15	-L- STA. 19+17.16, 44.19' RT
7	-L- STA. 12+44.30, 34.19' RT	16	-L- STA. 19+59.89, 43.93' RT
8	-Y1- STA. 10+72.35, 24.36' RT	17	-L- STA. 21+22.14, 44.22' RT
9	-Y1- STA. 10+80.22, 44.46' LT	18	-L- STA. 21+62.07, 43.95' RT




(T2) STOPBAR LOCATIONS (AT SIGNALIZED INTERSECTIONS)	
1	-L- STA. 12+36.82, 30.65' RT to -L- STA. 12+37.23, 6.07' LT
2	-L- STA. 12+69.80, 47.72' LT to -L- STA. 12+87.66, 48.49' LT
3	-L- STA. 13+42.07, 34.75' LT to -L- STA. 13+42.07, 8.75' LT
4	-L- STA. 13+48.75, 8.75' LT to -L- STA. 13+48.75, 3.25' RT
5	-Y1- STA. 10+86.00, 36.21' LT to -Y1- STA. 10+86.00, 3.00' LT


PAVEMENT MARKING DETAIL

PLOT DRIVER: NCDOT... PENTABLE: NCDOT... USER: CHARNDEN DATE: 12/15/2019 FILE: ...

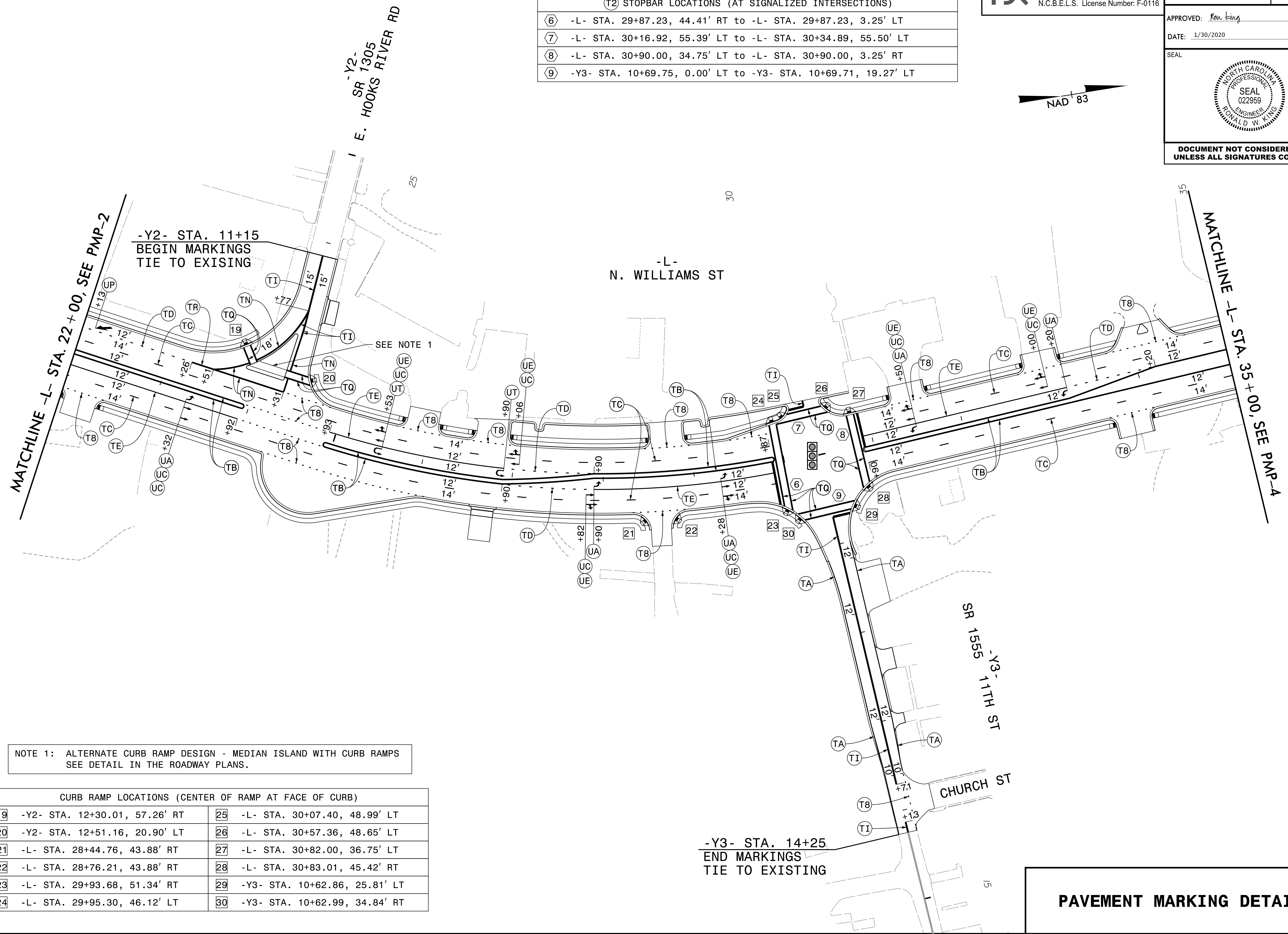
MATCHLINE -L- STA. 22 + 00, SEE PMP-3

PLOT DRIVER: NCDOT_pdf_color_eng_50.plt
 USER: CHARNDEN
 FILE: pw:\PMP\PPA01:SouthEast - Tampa\Documents\000166\CON0104978\CON0105025\000000000273731\6.0_CAD_BIM\6.2_WorK_In_Progress\U-2714_NCDOT_File_Structure\Traffic\ Pavement_Markings\U2714_PM_PMP-03.dgn
 PENTABLE: NCDOT_tcp.tbl
 TIME: 4:06:03 PM
 DATE: 12/15/2019


 HDR Engineering, Inc. of the Carolinas
 555 Fayetteville St, Suite 900 Raleigh, N.C. 27601
 N.C.B.E.L.S. License Number: F-0116

TIP NO.	SHEET NO.
U-2714	PMP-3
APPROVED: <i>Ken King</i>	
DATE: 1/30/2020	
SEAL	
	
DOCUMENT NOT CONSIDERED FINAL UNLESS ALL SIGNATURES COMPLETED	

T2 STOPBAR LOCATIONS (AT SIGNALIZED INTERSECTIONS)	
⑥	-L- STA. 29+87.23, 44.41' RT to -L- STA. 29+87.23, 3.25' LT
⑦	-L- STA. 30+16.92, 55.39' LT to -L- STA. 30+34.89, 55.50' LT
⑧	-L- STA. 30+90.00, 34.75' LT to -L- STA. 30+90.00, 3.25' RT
⑨	-Y3- STA. 10+69.75, 0.00' LT to -Y3- STA. 10+69.71, 19.27' LT



NOTE 1: ALTERNATE CURB RAMP DESIGN - MEDIAN ISLAND WITH CURB RAMPS SEE DETAIL IN THE ROADWAY PLANS.

CURB RAMP LOCATIONS (CENTER OF RAMP AT FACE OF CURB)			
19	-Y2- STA. 12+30.01, 57.26' RT	25	-L- STA. 30+07.40, 48.99' LT
20	-Y2- STA. 12+51.16, 20.90' LT	26	-L- STA. 30+57.36, 48.65' LT
21	-L- STA. 28+44.76, 43.88' RT	27	-L- STA. 30+82.00, 36.75' LT
22	-L- STA. 28+76.21, 43.88' RT	28	-L- STA. 30+83.01, 45.42' RT
23	-L- STA. 29+93.68, 51.34' RT	29	-Y3- STA. 10+62.86, 25.81' LT
24	-L- STA. 29+95.30, 46.12' LT	30	-Y3- STA. 10+62.99, 34.84' RT

PAVEMENT MARKING DETAIL



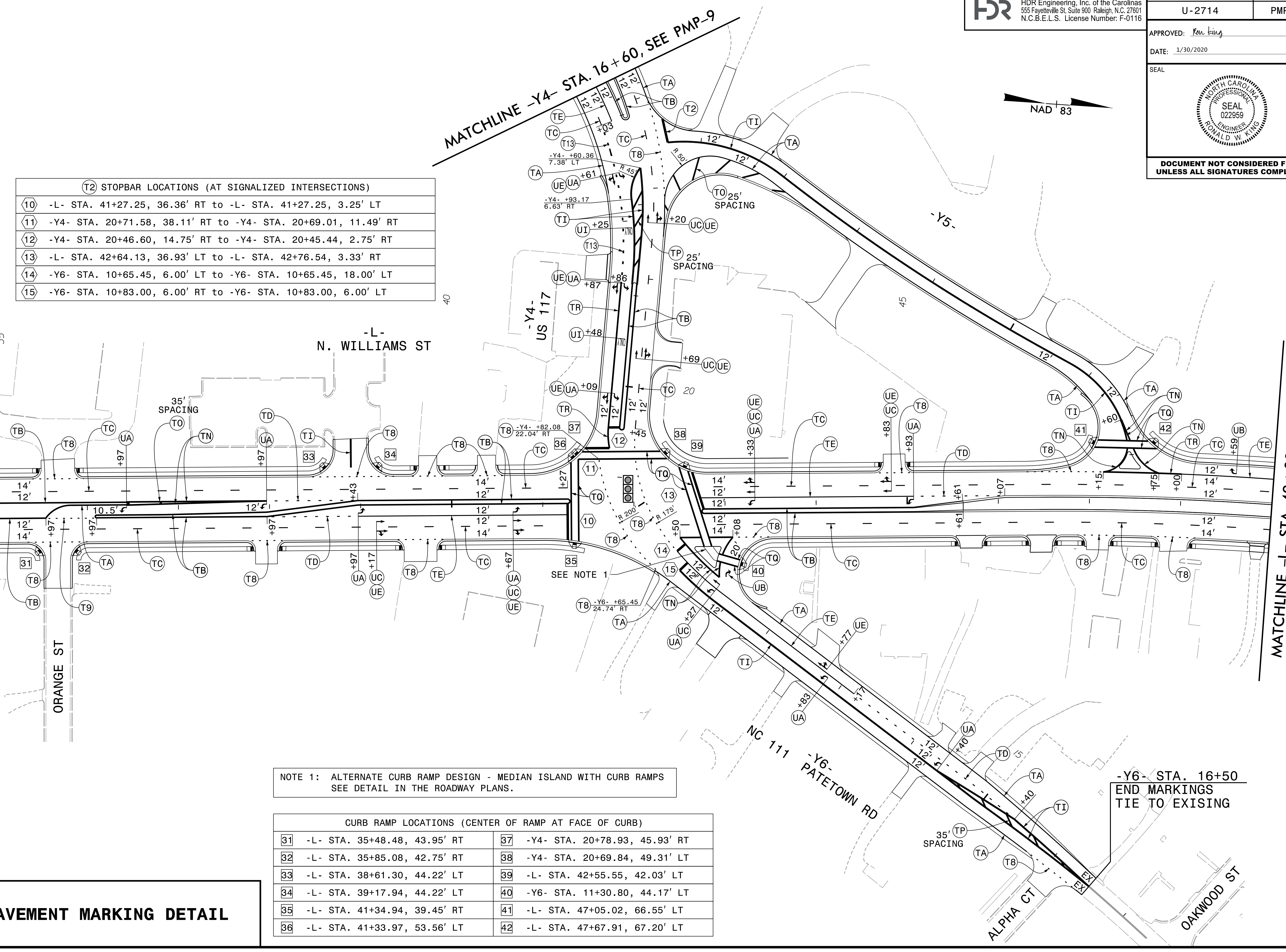
**DOCUMENT NOT CONSIDERED FINAL
 UNLESS ALL SIGNATURES COMPLETED**

PLOT DRIVER: NCDOT_pdf_color_eng_50.plt
 USER: CHARNDEN
 FILE: pw:\PMAP\PPPA01\SouthEast_Tampa\Documents\000166\CON0104978\CON0105025\00000000273731\6.0_CAD_BIM\6.2_Wor_k_In_Progress\U-2714_NCDOT_File_Structure\Traffic\Pavement_Markings\U2714_PM_PMP-04.dgn
 PENTABLE: NCDOT_tcp.tbl
 TIME: 4:06:11 PM
 DATE: 12/15/2019

MATCHLINE -L- STA. 35 + 00, SEE PMP-3

MATCHLINE -L- STA. 49 + 00, SEE PMP-5

(T2) STOPBAR LOCATIONS (AT SIGNALIZED INTERSECTIONS)	
10	-L- STA. 41+27.25, 36.36' RT to -L- STA. 41+27.25, 3.25' LT
11	-Y4- STA. 20+71.58, 38.11' RT to -Y4- STA. 20+69.01, 11.49' RT
12	-Y4- STA. 20+46.60, 14.75' RT to -Y4- STA. 20+45.44, 2.75' RT
13	-L- STA. 42+64.13, 36.93' LT to -L- STA. 42+76.54, 3.33' RT
14	-Y6- STA. 10+65.45, 6.00' LT to -Y6- STA. 10+65.45, 18.00' LT
15	-Y6- STA. 10+83.00, 6.00' RT to -Y6- STA. 10+83.00, 6.00' LT



NOTE 1: ALTERNATE CURB RAMP DESIGN - MEDIAN ISLAND WITH CURB RAMPS
 SEE DETAIL IN THE ROADWAY PLANS.

CURB RAMP LOCATIONS (CENTER OF RAMP AT FACE OF CURB)			
31	-L- STA. 35+48.48, 43.95' RT	37	-Y4- STA. 20+78.93, 45.93' RT
32	-L- STA. 35+85.08, 42.75' RT	38	-Y4- STA. 20+69.84, 49.31' LT
33	-L- STA. 38+61.30, 44.22' LT	39	-L- STA. 42+55.55, 42.03' LT
34	-L- STA. 39+17.94, 44.22' LT	40	-Y6- STA. 11+30.80, 44.17' LT
35	-L- STA. 41+34.94, 39.45' RT	41	-L- STA. 47+05.02, 66.55' LT
36	-L- STA. 41+33.97, 53.56' LT	42	-L- STA. 47+67.91, 67.20' LT

PAVEMENT MARKING DETAIL

-Y6- STA. 16+50
 END MARKINGS
 TIE TO EXISTING

PLOT DRIVER: NCD01-.pdf_color_eng_50.plt PENTABLE: NCD01_tcp.tbl
USER: CHARNDEN DATE: 12/15/2019 TIME: 4:06:33 PM
FILE: p:\p\PMAPPTPA01\SouthEgst-.Tampca\Documents\000166\CON0104978\CON0105025\00000000273731\6.0.CAD.BIM\6.2.Wor.k_In_Progress\U-2714_NCD01_File_Structure\Traffic\Pavement_Markings\U2714_PM_PMP-07.dgn

HDR HDR Engineering, Inc. of the Carolinas
555 Fayetteville St, Suite 900 Raleigh, N.C. 27601
N.C.B.E.L.S. License Number: F-0116

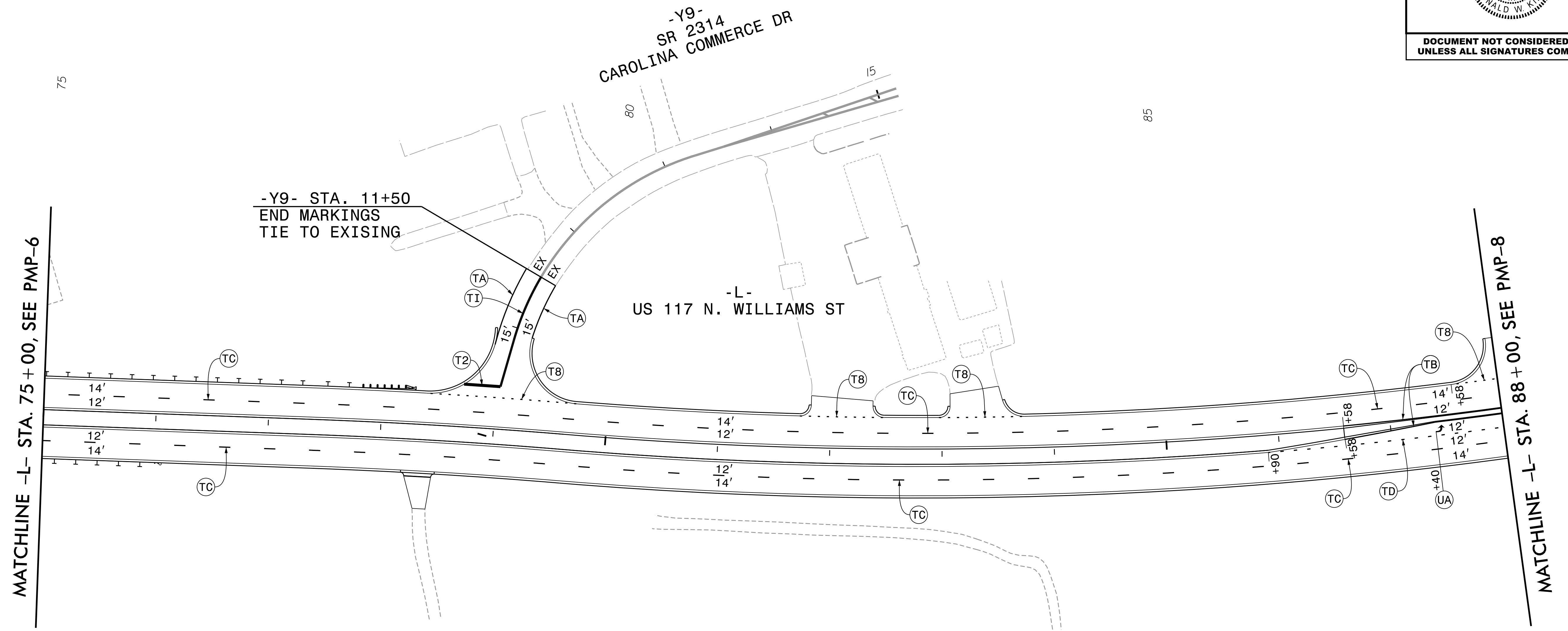
TIP NO.	SHEET NO.
U-2714	PMP-7

APPROVED: *Ken King*
DATE: 1/30/2020

SEAL

SEAL
022959
ENGINEER
RONALD W. KING

DOCUMENT NOT CONSIDERED FINAL
UNLESS ALL SIGNATURES COMPLETED



PAVEMENT MARKING DETAIL

