

09/20/2020

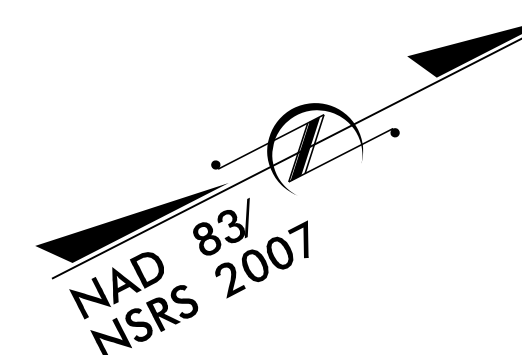
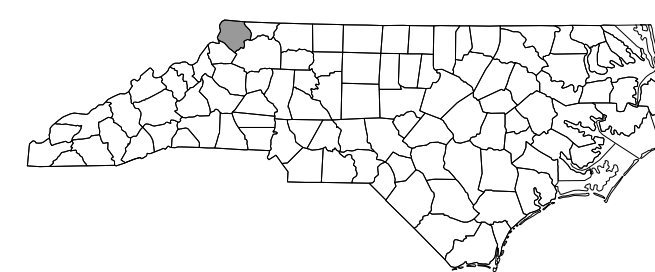
See Sheet 1-A For Index of Sheets, General Notes, and List of Standards  
See Sheet 1-B For Conventional Symbols  
See Sheet 1C-1-1C-4 For Survey Control Sheets

# STATE OF NORTH CAROLINA DIVISION OF HIGHWAYS

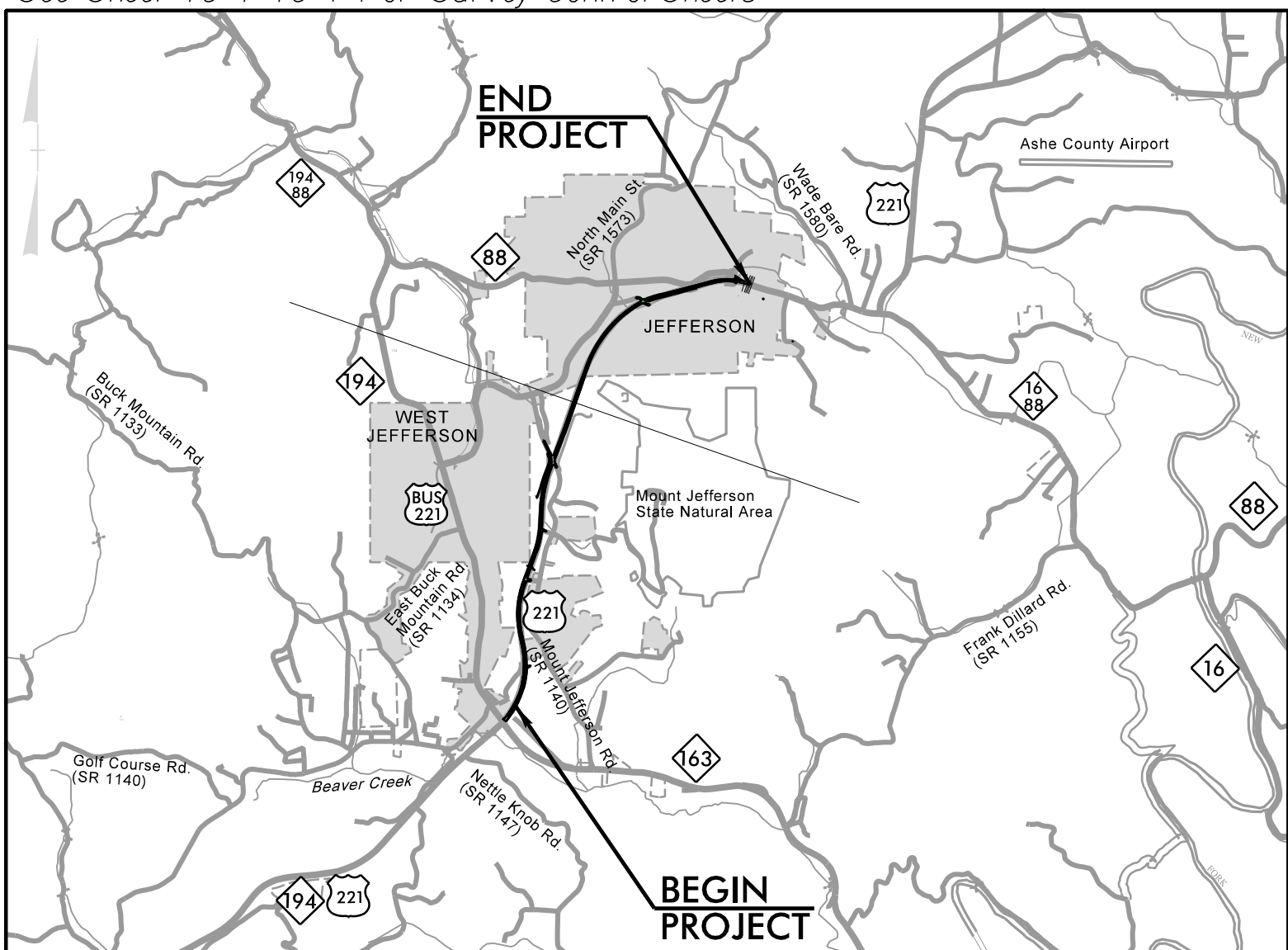
T.I.P. NO.	SHEET NO.
R-2915E	UC-1

## UTILITY CONSTRUCTION PLANS ASHE COUNTY

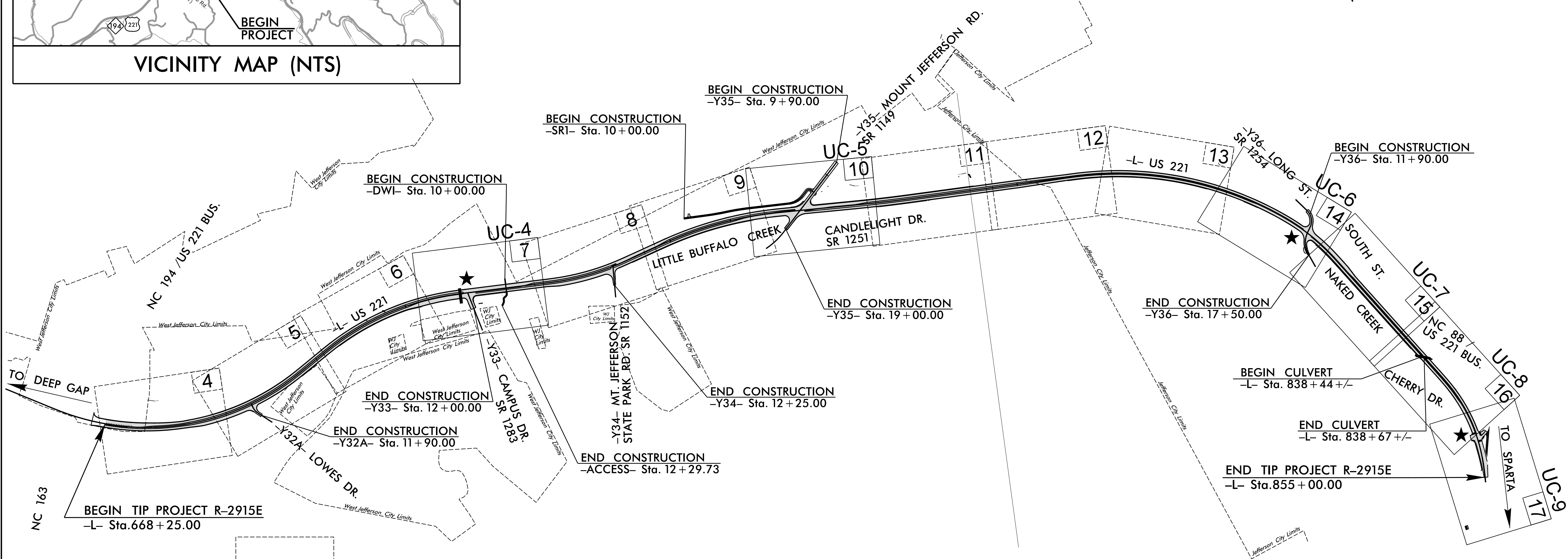
LOCATION: US 221 FROM US 221 BYPASS TO  
US 221 BUSINESS/NC 88 IN JEFFERSON  
TYPE OF WORK: WATER AND SEWER RELOCATION



TIP PROJECT: R-2915E



VICINITY MAP (NTS)

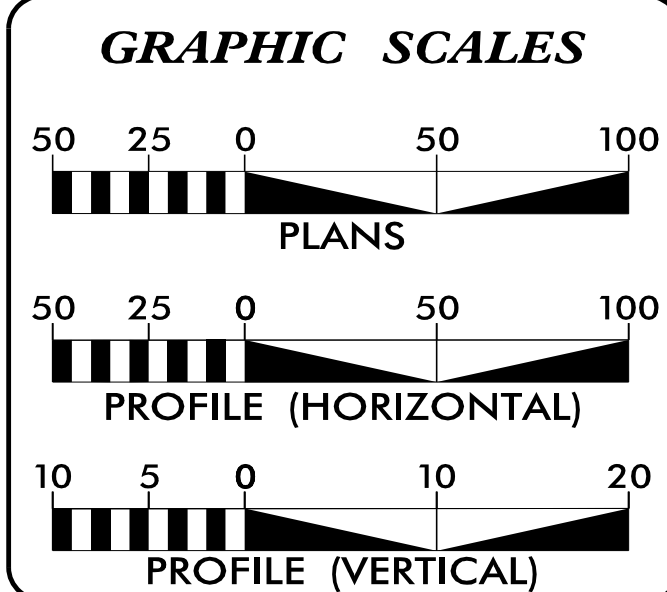


NO UTILITY CONFLICTS ON THIS SHEET  
THIS IS A PARTIAL CONTROLLED-ACCESS PROJECT WITH ACCESS BEING LIMITED TO POINTS AS SHOWN ON PLANS.

★ PROPOSED TRAFFIC SIGNAL

DOCUMENT NOT CONSIDERED FINAL  
UNTIL ALL SIGNATURES ARE COMPLETED

CONTRACT: C204356



INDEX OF SHEETS	
SHEET NO.:	DESCRIPTION:
UC-1	TITLE SHEET
UC-2	UTILITY SYMBOLOGY
UC-3	NOTES
UC-3A	DETAILS
UC-4 THRU UC-9	UTILITY CONSTRUCTION SHEETS
UC-10 THRU UC-12	PROFILE SHEETS

WATER AND SEWER OWNERS ON PROJECT	
(A) WATER - TOWN OF JEFFERSON (UC-4, UC-5)	
(B) WATER - TOWN OF WEST JEFFERSON (UC-6 THRU UC-9)	

PREPARED IN THE OFFICE OF

P: (919) 878-9560  
6601 Six Forks Road, Forum 1, Suite 700  
Raleigh, North Carolina 27615-3960  
NC License No. F-0112

Responsive People | Creative Solutions

FOR NORTH CAROLINA DEPARTMENT OF TRANSPORTATION

HOWARD WOODALL, P.E.	PROJECT MANAGER
BRYAN BADEY, P.E.	MANAGER
MONICA SARNA, P.E.	ENGINEER

SEAL

DocuSigned by:  
Bryan Badey  
86448FC74F3741E 2/13/2020

DIVISION OF HIGHWAYS  
UTILITIES UNIT  
1555 MAIL SERVICES CENTER  
RALEIGH, NC 27699-1555  
PHONE (919) 707-6690  
FAX (919) 250-4151

BYRON SANDERS, P.E.	UTILITIES REGIONAL ENGINEER
XXXX	UTILITIES ENGINEER
AMY DUPREE	UTILITIES AREA COORDINATOR
XXXX	UTILITIES COORDINATOR



# STATE OF NORTH CAROLINA DIVISION OF HIGHWAYS

## UTILITIES PLAN SHEET SYMBOLS

PROJECT REFERENCE NO. <i>R-2915E</i>	SHEET NO. <i>UC-2</i>
DESIGNED BY: <i>MSS</i>	
DRAWN BY: <i>MSS</i>	
CHECKED BY: <i>BMB</i>	
APPROVED BY: <i>BMB</i>	
REVISED: <i>XXX</i>	
NORTH CAROLINA DEPARTMENT OF TRANSPORTATION UTILITIES ENGINEERING SEC. PHONE: (919) 707-6690 FAX: (919) 250-4151	
UTILITY CONSTRUCTION PLANS ONLY	

### UTILITY CONSTRUCTION

#### PROPOSED WATER SYMBOLS

Water Line (Sized as Shown)	
11 1/4 Degree Bend	
22 1/2 Degree Bend	
45 Degree Bend	
90 Degree Bend	
Plug	
Tee	
Cross	
Reducer	
Gate Valve	
Butterfly Valve	
Tapping Valve	
Line Stop	
Line Stop with Bypass	
Blow Off	
Fire Hydrant	
Relocate Fire Hydrant	
Remove Fire Hydrant	REM FH
Water Meter	
Relocate Water Meter	
Remove Water Meter	REM WM
Water Pump Station	
RPZ Backflow Preventer	
DCV Backflow Preventer	
Relocate RPZ Backflow Preventer	
Relocate DCV Backflow Preventer	

#### PROPOSED SEWER SYMBOLS

Gravity Sewer Line (Sized as Shown)	
Force Main Sewer Line (Sized as Shown)	
Manhole (Sized per Note)	
Sewer Pump Station	

#### PROPOSED MISCELLANEOUS UTILITIES SYMBOLS

Power Pole	
Telephone Pole	
Joint Use Pole	
Telephone Pedestal	
Utility Line by Others (Type as Shown)	
Trenchless Installation	
Encasement by Open Cut	
Encasement	

Thrust Block	
Air Release Valve	
Utility Vault	
Concrete Pier	
Steel Pier	
Plan Note	
Pay Item Note	

NOTE

PAY ITEM

#### EXISTING UTILITIES SYMBOLS

Power Pole		*Underground Power Line	
Telephone Pole		*Underground Telephone Cable	
Joint Use Pole		*Underground Telephone Conduit	
Utility Pole		*Underground Fiber Optics Telephone Cable	
Utility Pole with Base		*Underground TV Cable	
H-Frame Pole		*Underground Fiber Optics TV Cable	
Power Transmission Line Tower		*Underground Gas Pipeline	
Water Manhole		Aboveground Gas Pipeline	
Power Manhole		*Underground Water Line	
Telephone Manhole		Aboveground Water Line	
Sanitary Sewer Manhole		*Underground Gravity Sanitary Sewer Line	
Hand Hole for Cable		Aboveground Gravity Sanitary Sewer Line	
Power Transformer		*Underground SS Forced Main Line	
Telephone Pedestal		Underground Unknown Utility Line	
CATV Pedestal		SUE Test Hole	
Gas Valve		Water Meter	
Gas Meter		Water Valve	
Located Miscellaneous Utility Object		Fire Hydrant	
Abandoned According to Utility Records	AATUR	Sanitary Sewer Cleanout	
End of Information	E.O.I.		

\*For Existing Utilities  
 Utility Line Drawn from Record (Type as Shown)  
 Designated Utility Line (Type as Shown)

# UTILITY CONSTRUCTION

## GENERAL NOTES:

1. THE PROPOSED UTILITY CONSTRUCTION SHALL MEET THE APPLICABLE REQUIREMENTS OF THE NC DEPARTMENT OF TRANSPORTATION'S "STANDARD SPECIFICATIONS FOR ROADS AND STRUCTURES" DATED JANUARY 2018.

2. THE EXISTING WATER SYSTEM OWNERS ARE TOWN OF WEST JEFFERSON AND THE TOWN OF JEFFERSON. THE CONTACT PERSON IS BRYANT PRICE, 336-246-3551, FOR THE TOWN OF WEST JEFFERSON, AND ROGER MILLER, 336-846-9368, FOR THE TOWN OF JEFFERSON.

3. ALL WATER LINES TO BE INSTALLED WITHIN COMPLIANCE OF THE RULES AND REGULATIONS OF THE NORTH CAROLINA DEPARTMENT OF ENVIRONMENTAL QUALITY, DIVISION OF WATER RESOURCES, PUBLIC WATER SUPPLY SECTION. ALL SEWER LINES TO BE INSTALLED WITHIN COMPLIANCE OF THE RULES AND REGULATIONS OF THE NORTH CAROLINA DEPARTMENT OF ENVIRONMENT QUALITY, DIVISION OF WATER RESOURCES, WATER QUALITY SECTION. PERFORM ALL WORK IN ACCORDANCE WITH THE APPLICABLE PLUMBING CODES.

4. THE UTILITY OWNER OWNS THE EXISTING UTILITY FACILITIES AND WILL OWN THE NEW UTILITY FACILITIES AFTER ACCEPTANCE BY THE DEPARTMENT. THE DEPARTMENT OWNS THE CONSTRUCTION CONTRACT AND HAS ADMINISTRATIVE AUTHORITY. COMMUNICATIONS AND DECISIONS BETWEEN THE CONTRACTOR AND UTILITY OWNER ARE NOT BINDING UPON THE DEPARTMENT OR THIS CONTRACT UNLESS AUTHORIZED BY THE ENGINEER. AGREEMENTS BETWEEN THE UTILITY OWNER AND CONTRACTOR FOR THE WORK THAT IS NOT PART OF THIS CONTRACT OR IS SECONDARY TO THIS CONTRACT ARE ALLOWED, BUT ARE NOT BINDING UPON THE DEPARTMENT.

5. PROVIDE ACCESS FOR THE DEPARTMENT PERSONNEL AND THE OWNER'S REPRESENTATIVES TO ALL PHASES OF CONSTRUCTION. NOTIFY DEPARTMENT PERSONNEL AND THE UTILITY OWNER TWO WEEKS PRIOR TO COMMENCEMENT OF ANY WORK AND ONE WEEK PRIOR TO SERVICE INTERRUPTION. KEEP UTILITY OWNERS' REPRESENTATIVES INFORMED OF WORK PROGRESS AND PROVIDE OPPORTUNITY FOR INSPECTION OF CONSTRUCTION AND TESTING.

6. THE PLANS DEPICT THE BEST AVAILABLE INFORMATION FOR THE LOCATION, SIZE, AND TYPE OF MATERIAL FOR ALL EXISTING UTILITIES. MAKE INVESTIGATIONS FOR DETERMINING THE EXACT LOCATION, SIZE, AND TYPE MATERIAL OF THE EXISTING FACILITIES AS NECESSARY FOR THE CONSTRUCTION OF THE PROPOSED UTILITIES AND FOR AVOIDING DAMAGE TO EXISTING FACILITIES. REPAIR ANY DAMAGE INCURRED TO EXISTING FACILITIES TO THE ORIGINAL OR BETTER CONDITION AT NO ADDITIONAL COST TO THE DEPARTMENT.

7. MAKE FINAL CONNECTIONS OF THE NEW WORK TO THE EXISTING SYSTEM WHERE INDICATED ON THE PLANS, AS REQUIRED TO FIT THE ACTUAL CONDITIONS, OR AS DIRECTED.

8. MAKE CONNECTIONS BETWEEN EXISTING AND PROPOSED UTILITIES AT TIMES MOST CONVENIENT TO THE PUBLIC, WITHOUT ENDANGERING THE UTILITY SERVICE, AND IN ACCORDANCE WITH THE UTILITY OWNER'S REQUIREMENTS. MAKE CONNECTIONS ON WEEKENDS, AT NIGHT, AND ON HOLIDAYS IF NECESSARY.

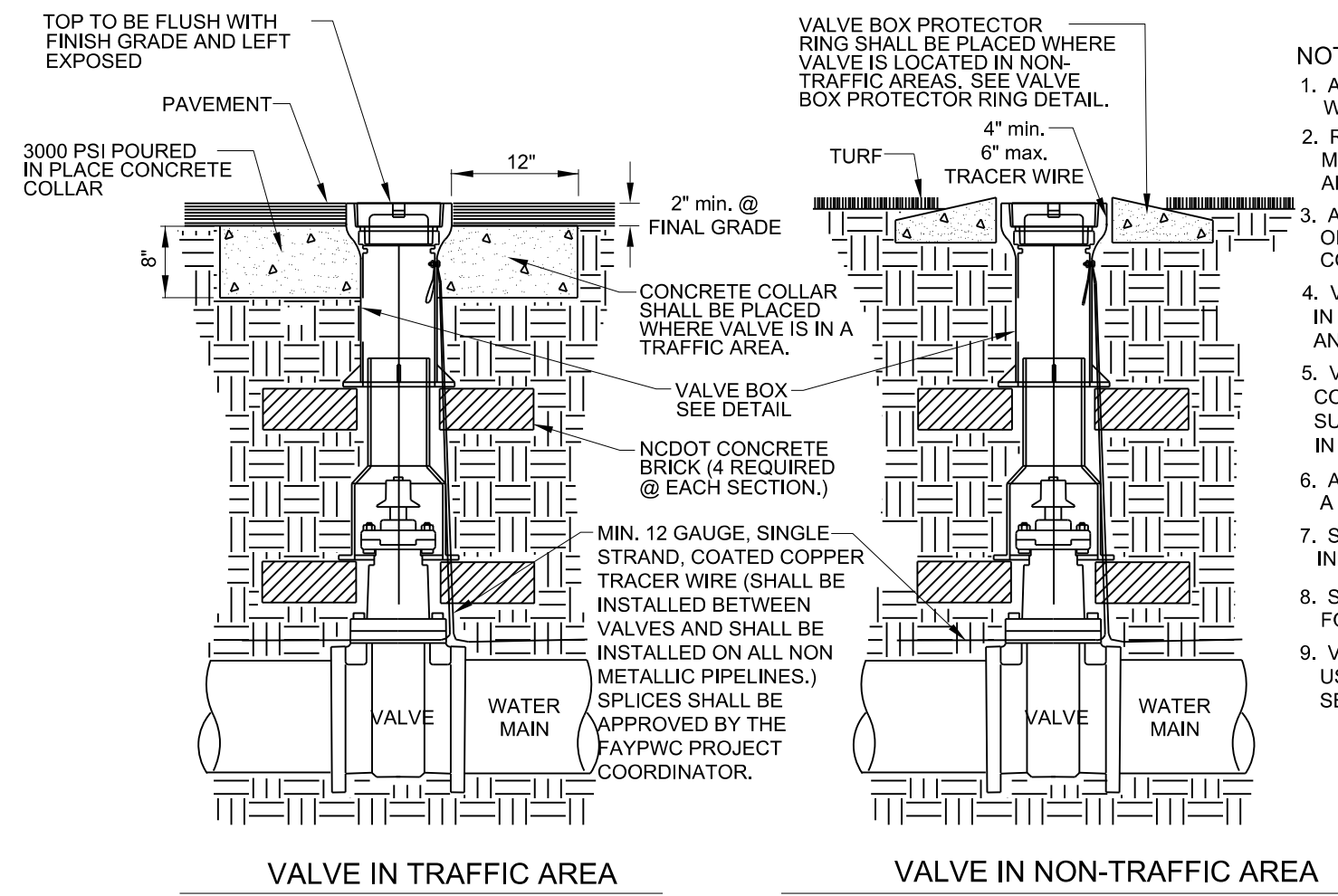
9. ALL UTILITY MATERIALS SHALL BE APPROVED PRIOR TO DELIVERY TO THE PROJECT. SEE 1500-7, " SUBMITTALS AND RECORDS" IN SECTION 1500 OF THE STANDARD SPECIFICATIONS.

PROJECT REFERENCE NO. <i>R-2915E</i>	SHEET NO. <i>UC-3</i>
DESIGNED BY: <i>MSS</i>	
DRAWN BY: <i>MSS</i>	
CHECKED BY: <i>BMB</i>	
APPROVED BY: <i>BMB</i>	
REVISED: <i>XXX</i>	
NORTH CAROLINA DEPARTMENT OF TRANSPORTATION UTILITIES ENGINEERING SEC. PHONE: (919) 707-6690 FAX: (919) 250-4151	

## UTILITY CONSTRUCTION

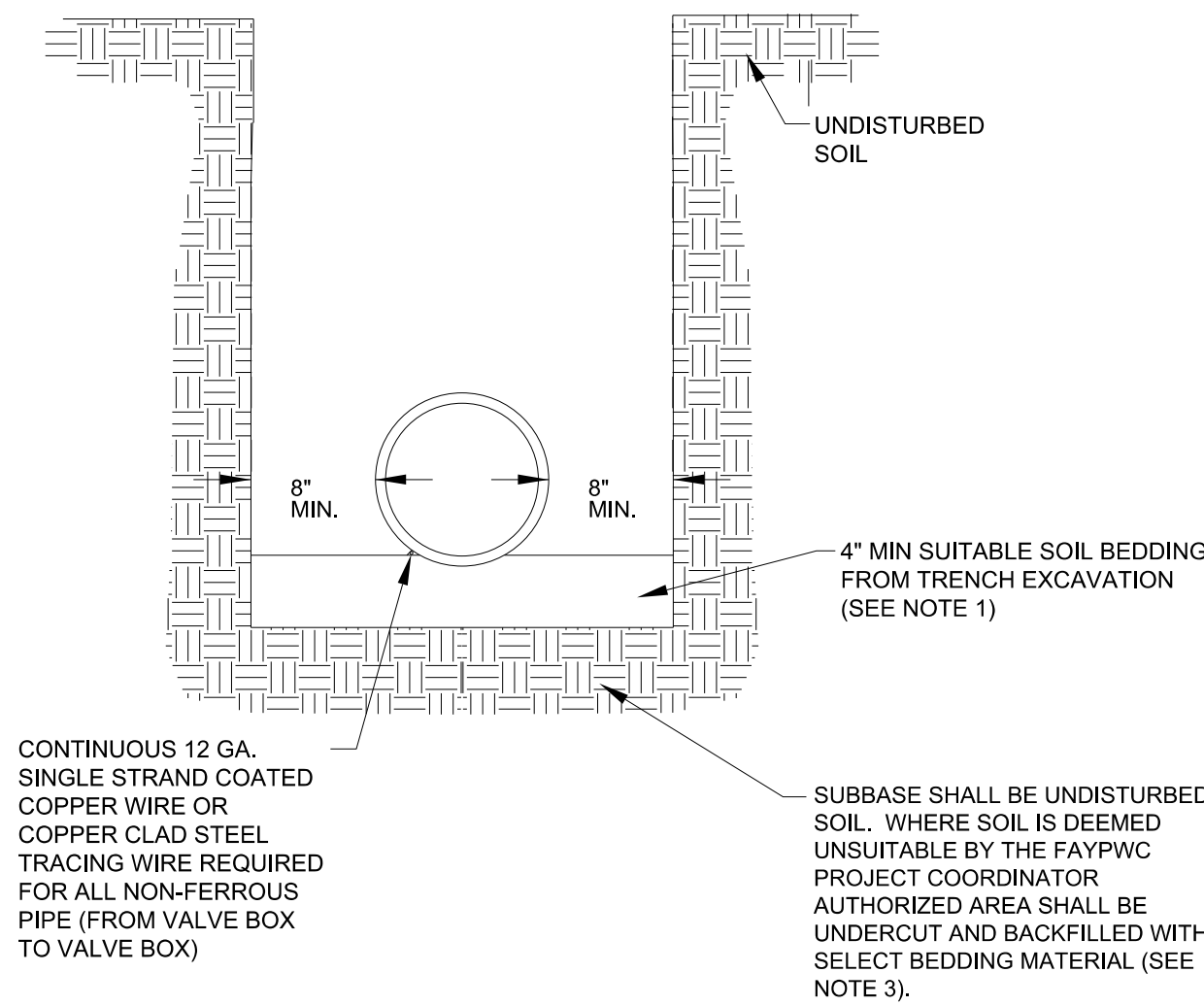


GATE VALVE DETAIL



- NOTES:
1. ALL MATERIALS SHALL BE IN ACCORDANCE WITH FAYPWC STANDARDS.
  2. RESILIENT WEDGE GATE VALVE SHALL BE AS MANUFACTURED BY MUELLER CORP., AMERICAN DARLING OR CLOW CORP.
  3. ALL VALVES SHALL HAVE 2" SQUARE OPERATING NUT AND SHALL OPEN COUNTERCLOCKWISE.
  4. VALVE BODY, BONNET AND GATE SHALL BE IN ACCORDANCE WITH AWWA C-509/C-515 AND NSF61.
  5. VALVE BODY AND BONNET SHALL BE COATED ON ALL INTERIOR AND EXTERIOR SURFACES WITH A FUSION BONDED EPOXY IN ACCORDANCE WITH AWWA C-550-90.
  6. ALL VALVES 24" AND SMALLER SHALL HAVE A SAFE WORKING PRESSURE OF 250 PSI.
  7. SEE VALVE BOX DETAIL FOR ADDITIONAL INFORMATION.
  8. SEE VALVE BOX PROTECTOR RING DETAIL FOR ADDITIONAL INFORMATION.
  9. VALVE BOX SECTIONS ARE REQUIRED. THE USE OF PIPE IN LIEU OF VALVE BOX SECTIONS SHALL NOT BE PERMITTED.

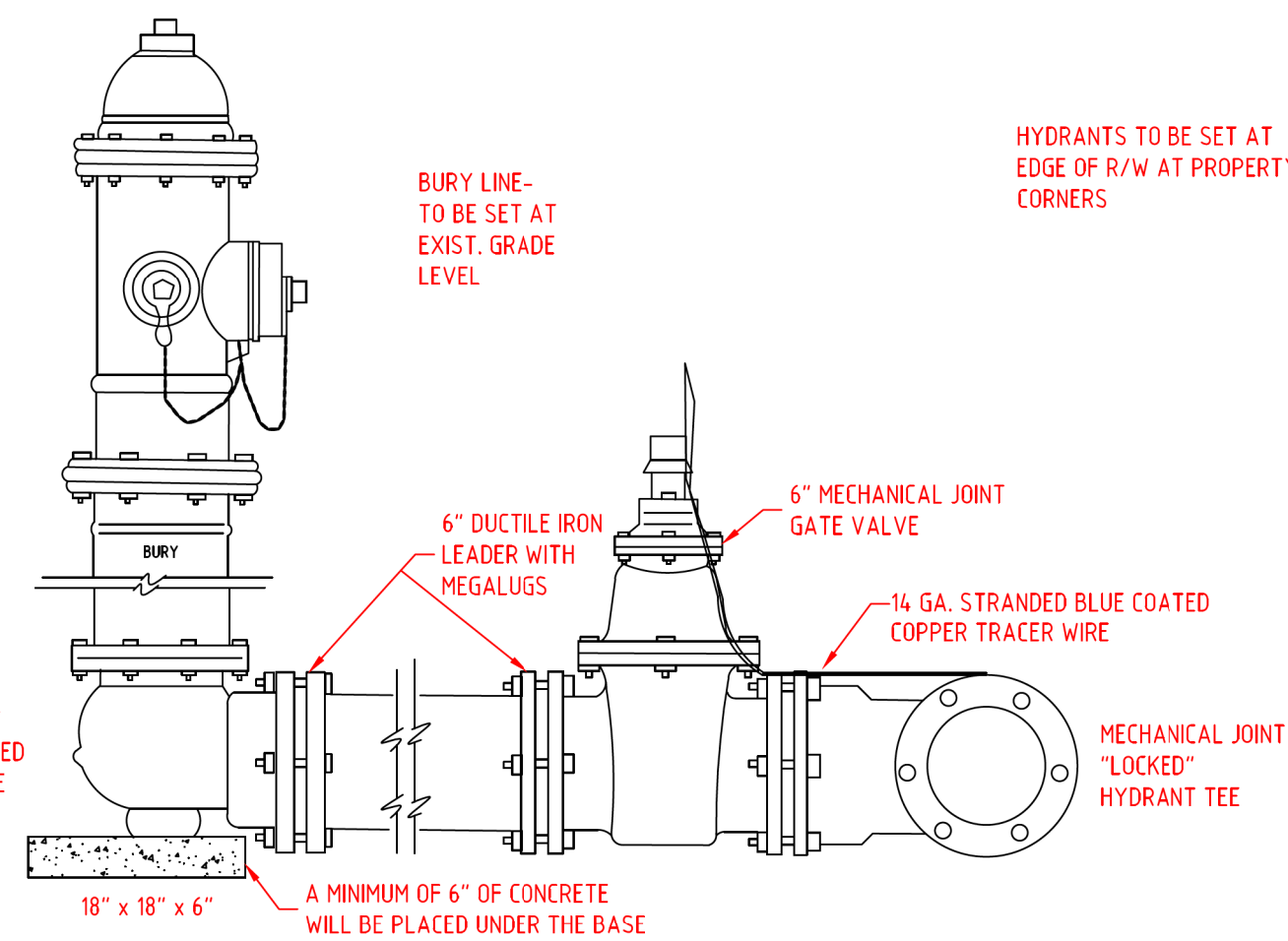
WATER MAIN BEDDING DETAIL



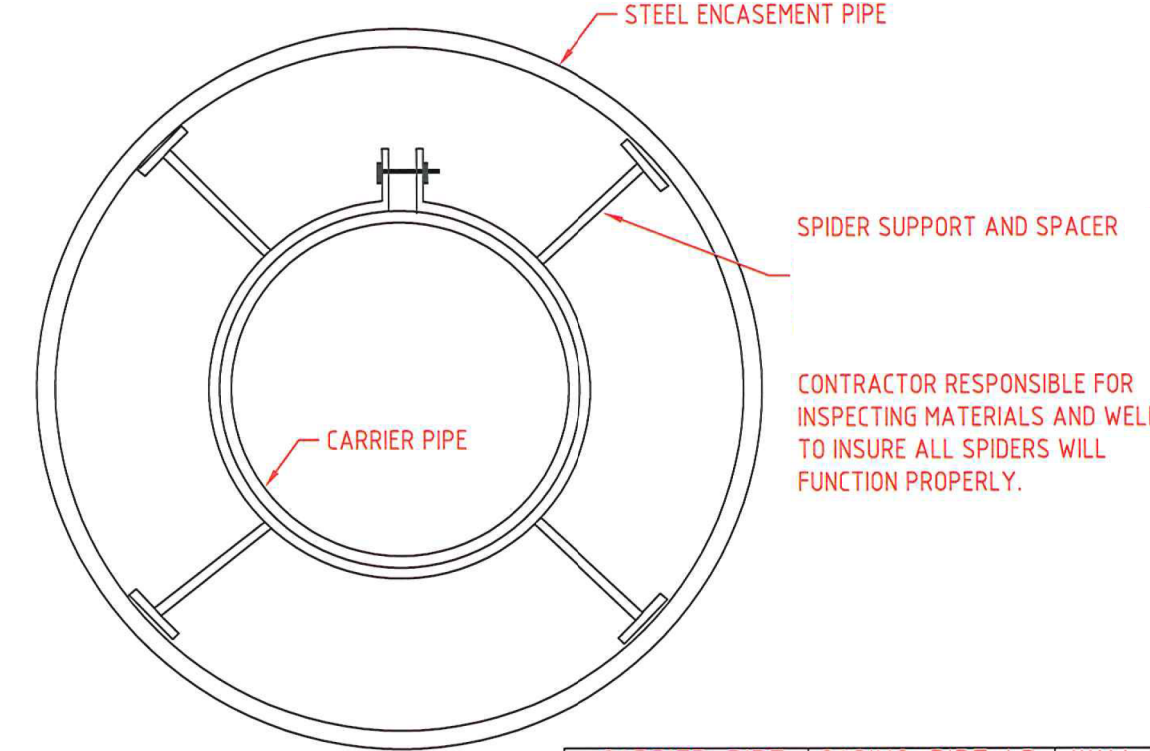
- NOTES:
1. SUITABLE SOIL BEDDING IS DEFINED AS "NATIVE" SOIL EXCAVATED FROM THE TRENCH, FREE OF ROCKS, FOREIGN MATERIAL, AND FROZEN EARTH.
  2. SUITABLE BEDDING MATERIAL SHALL EXTEND TO UNDISTURBED TRENCH WALLS.
  3. IF GROUND CONDITIONS WARRANT, IT MAY BE NECESSARY TO BED DUCTILE IRON WATER MAINS IN SELECT BEDDING MATERIAL (No.5 OR No.57 STONE) TO THE SPRINGLINE OF THE PIPE. SUCH INSTALLATION SHALL BE AS DIRECTED BY THE FAYPWC PROJECT COORDINATOR.

PROJECT REFERENCE NO.	SHEET NO.
R-2915E	UC-3A
DESIGNED BY: MSS	
DRAWN BY: MSS	
CHECKED BY: BMB	
APPROVED BY: BMB	
REVISD: XXX	
NORTH CAROLINA DEPARTMENT OF TRANSPORTATION UTILITIES ENGINEERING SEC. PHONE: (919) 707-6690 FAX: (919) 250-4151	
UTILITY CONSTRUCTION PLANS ONLY	

UTILITY CONSTRUCTION



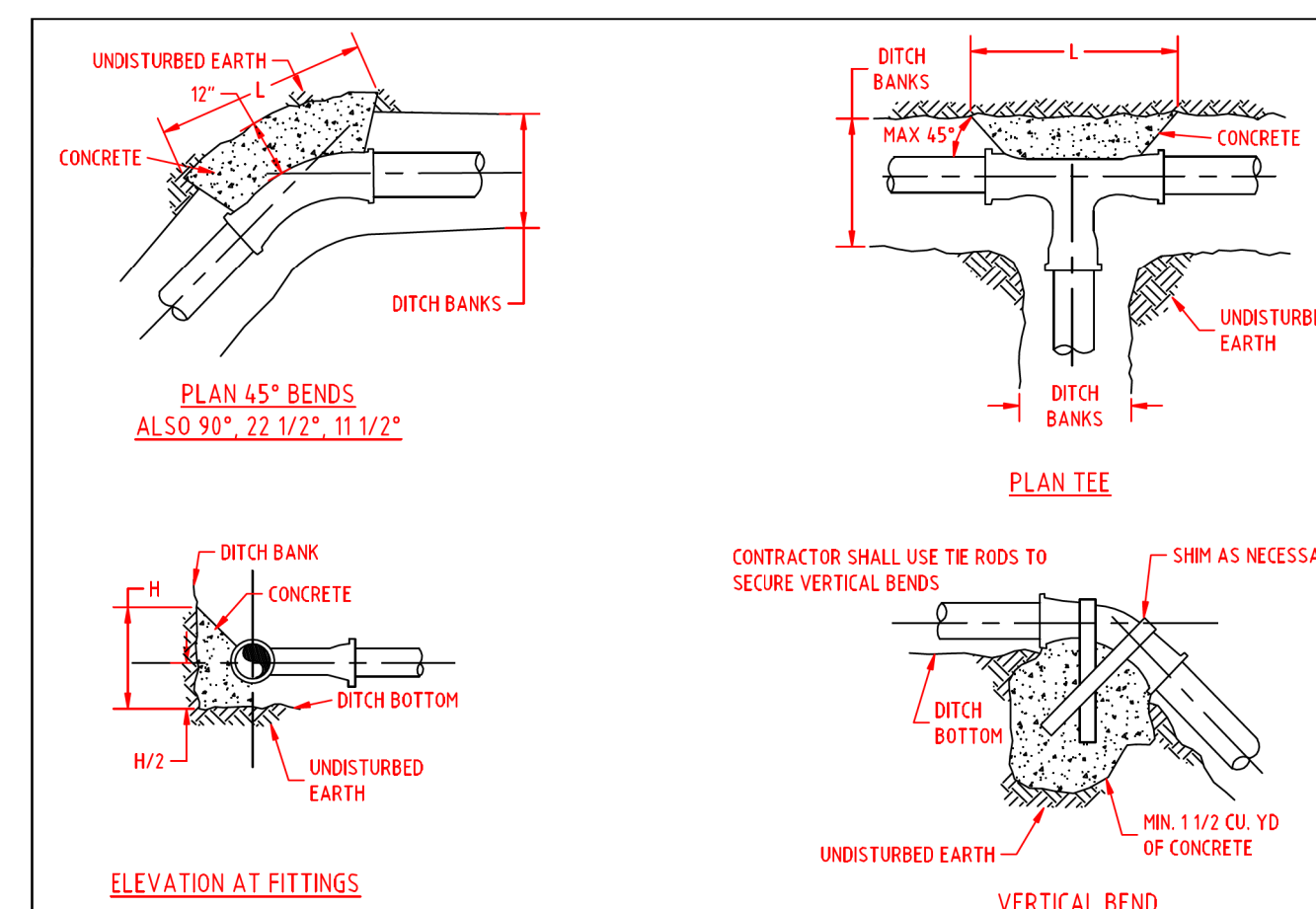
STANDARD DETAIL  
FIRE HYDRANT INSTALLATION  
SCALE: N.T.S.



CARRIER PIPE	CASING PIPE I.D.	WALL THICKNESS
4"	8"	0.188"
6"	12"	0.188"
8"	16"	0.250"
10"	18"	0.250"
12"	20"	0.281"
16"	24"	0.344"
24"	30"	0.406"
30"	42"	0.500"
36"	48"	0.500"

- NOTES:
1. NO PIPE SHALL BE SUPPORTED BY BELL.
  2. END SECTIONS LESS THAN 4' MAY BE UNSUPPORTED.
  3. WALL THICKNESS AS PER TABLE UNLESS OTHERWISE SHOWN ON PLAN.
  4. MASONRY SEAL AT ENDS -- 2" x 4" WEEP HOLE AT LOW END
  5. ALL PRESSURE PIPES TO HAVE TRACING WIRE IN ALL CASING BORES.

STANDARD DETAIL  
PIPE ENCASEMENT  
SCALE: N.T.S.



STANDARD DETAIL  
THRUST BLOCK  
SCALE: DATE: 11-17-20

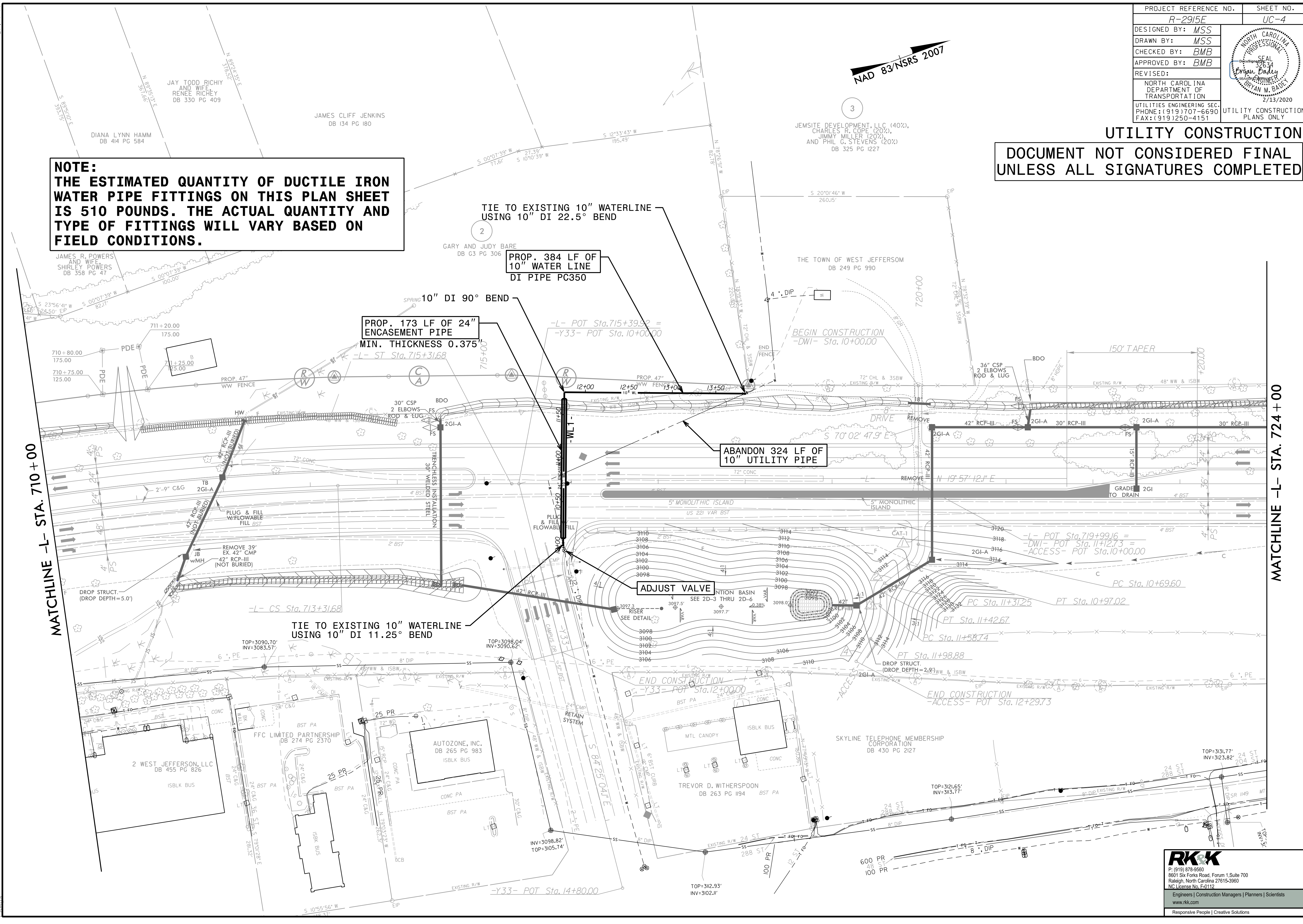


PROJECT REFERENCE NO.	SHEET NO.
R-2915E	UC-4
DESIGNED BY: MSS	
DRAWN BY: MSS	
CHECKED BY: BMB	
APPROVED BY: BMB	
REVISED:	
NORTH CAROLINA DEPARTMENT OF TRANSPORTATION	
UTILITIES ENGINEERING SEC. PHONE: (919) 707-6690 FAX: (919) 250-4151	
UTILITY CONSTRUCTION PLANS ONLY	

### UTILITY CONSTRUCTION

**DOCUMENT NOT CONSIDERED FINAL  
UNLESS ALL SIGNATURES COMPLETED**

**NOTE:  
THE ESTIMATED QUANTITY OF DUCTILE IRON  
WATER PIPE FITTINGS ON THIS PLAN SHEET  
IS 510 POUNDS. THE ACTUAL QUANTITY AND  
TYPE OF FITTINGS WILL VARY BASED ON  
FIELD CONDITIONS.**



MATCHLINE -L- STA. 710 + 00

MATCHLINE -L- STA. 724 + 00

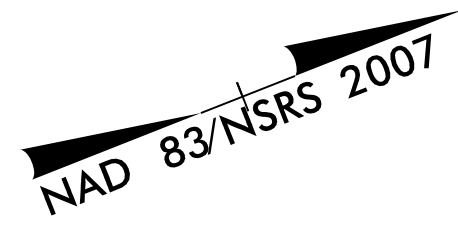
NAD 83/NSRS 2007

2/13/2020  
P:\Utilities\Engineering\UC\Proj\NR-2915E\_Ut\_rdy07\_UC04\_psh.dgn  
rk

**RK&K**  
P: (919) 878-6560  
8601 Six Forks Road, Forum 1, Suite 700  
Raleigh, North Carolina 27615-3960  
NC License No. F-0112  
Engineers | Construction Managers | Planners | Scientists  
www.rk&k.com  
Responsive People | Creative Solutions

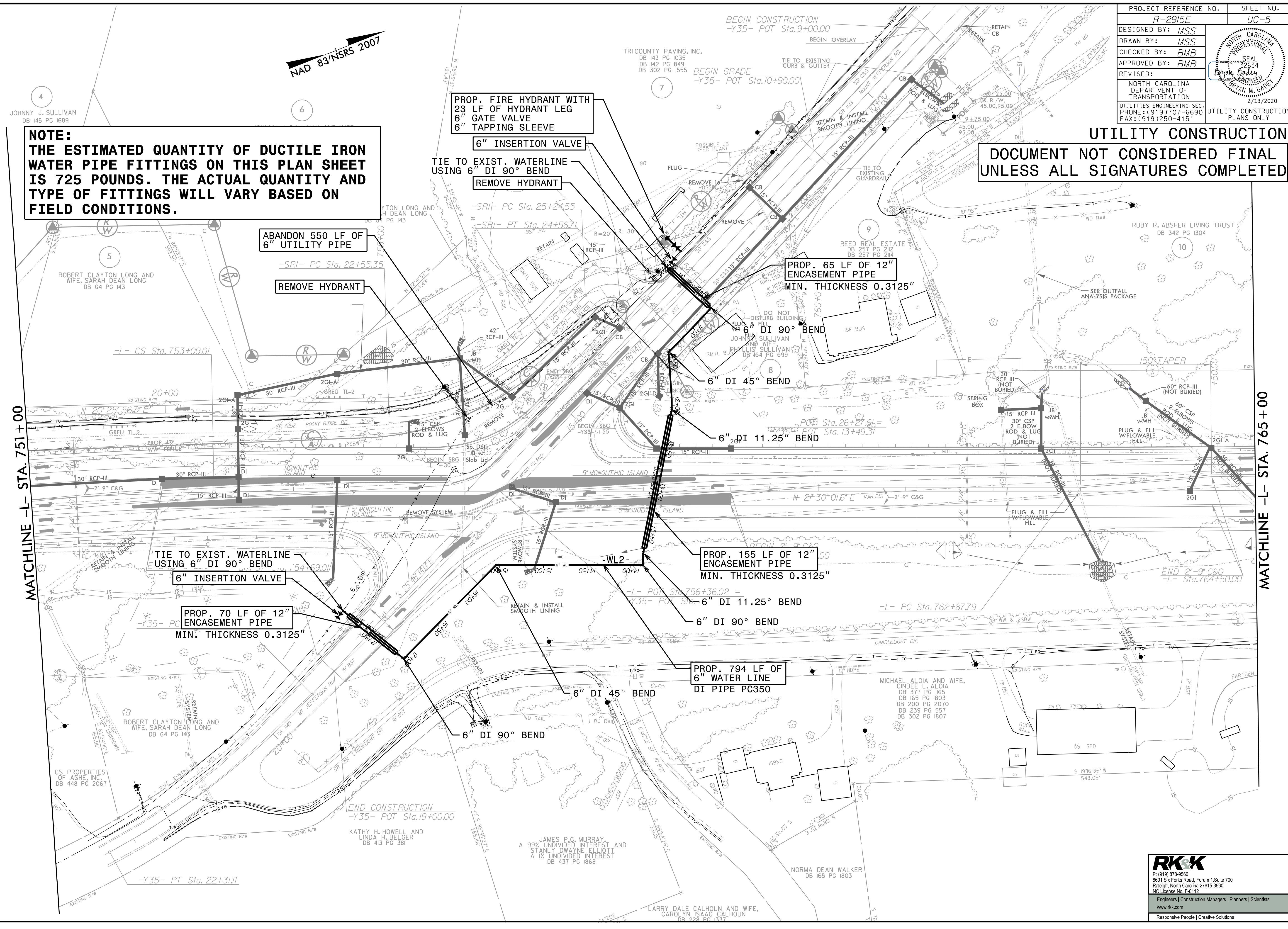


PROJECT REFERENCE NO.	SHEET NO.
R-2915E	UC-5
DESIGNED BY: MSS	
DRAWN BY: MSS	
CHECKED BY: BMB	
APPROVED BY: BMB	
REVISED:	2/13/2020
NORTH CAROLINA DEPARTMENT OF TRANSPORTATION	
UTILITIES ENGINEERING SEC. PHONE: (919) 707-6690 FAX: (919) 250-4151	
UTILITY CONSTRUCTION PLANS ONLY	



**NOTE:**  
 THE ESTIMATED QUANTITY OF DUCTILE IRON WATER PIPE FITTINGS ON THIS PLAN SHEET IS 725 POUNDS. THE ACTUAL QUANTITY AND TYPE OF FITTINGS WILL VARY BASED ON FIELD CONDITIONS.

**UTILITY CONSTRUCTION**  
 DOCUMENT NOT CONSIDERED FINAL  
 UNLESS ALL SIGNATURES COMPLETED



MATCHLINE -L- STA. 751+00

MATCHLINE -L- STA. 765+00

2/13/2020  
 Utilities Engineering UC-Proj\AR-2915E\_Ut-rd\10\_UC05\_psh.dgn

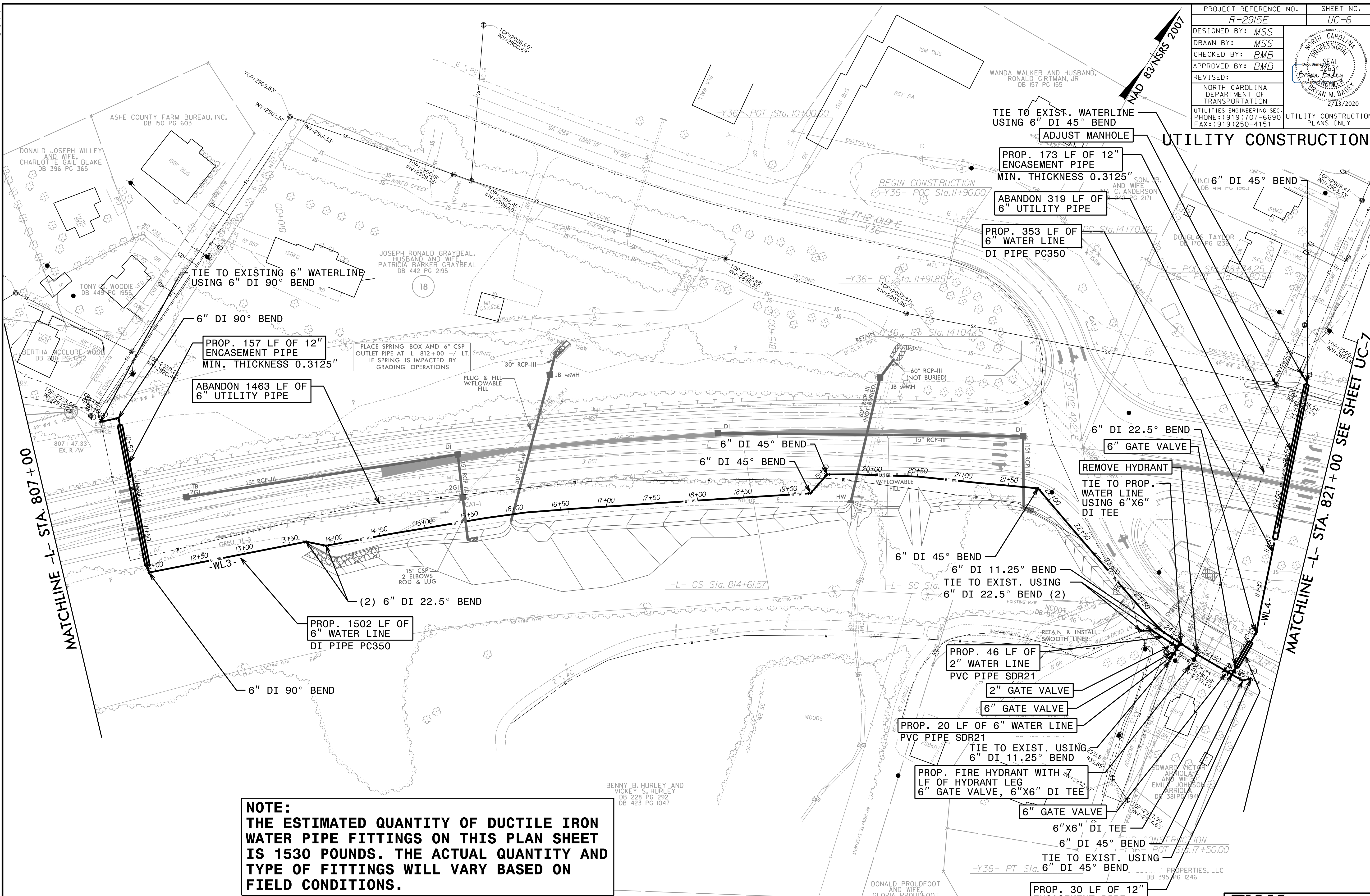
**RK&K**  
 P: (919) 878-9560  
 8601 Six Forks Road, Forum 1, Suite 700  
 Raleigh, North Carolina 27615-3960  
 NC License No. F-0112

Engineers | Construction Managers | Planners | Scientists  
 www.rk&k.com  
 Responsive People | Creative Solutions



PROJECT REFERENCE NO.	SHEET NO.
R-2915E	UC-6
DESIGNED BY: MSS	
DRAWN BY: MSS	
CHECKED BY: BMB	
APPROVED BY: BMB	
REVISED:	
NORTH CAROLINA DEPARTMENT OF TRANSPORTATION	
UTILITIES ENGINEERING SEC. PHONE: (919) 707-6690 FAX: (919) 250-4151	
UTILITY CONSTRUCTION PLANS ONLY	

### UTILITY CONSTRUCTION



**NOTE:**  
 THE ESTIMATED QUANTITY OF DUCTILE IRON WATER PIPE FITTINGS ON THIS PLAN SHEET IS 1530 POUNDS. THE ACTUAL QUANTITY AND TYPE OF FITTINGS WILL VARY BASED ON FIELD CONDITIONS.

**DOCUMENT NOT CONSIDERED FINAL  
 UNLESS ALL SIGNATURES COMPLETED**

**RK&K**  
 P: (919) 878-9560  
 8601 Six Forks Road, Forum 1, Suite 700  
 Raleigh, North Carolina 27615-3960  
 NC License No. F-0112  
 Engineers | Construction Managers | Planners | Scientists  
 www.rkk.com  
 Responsive People | Creative Solutions

MATCHLINE -L- STA. 807+00

MATCHLINE -L- STA. 821+00 SEE SHEET UC-7

2/13/2020  
 P:\Utilities\Engineering\UC\Pro\AR-2915E\_Ut\_rdy\14\_UC06\_pah.dgn  
 kens

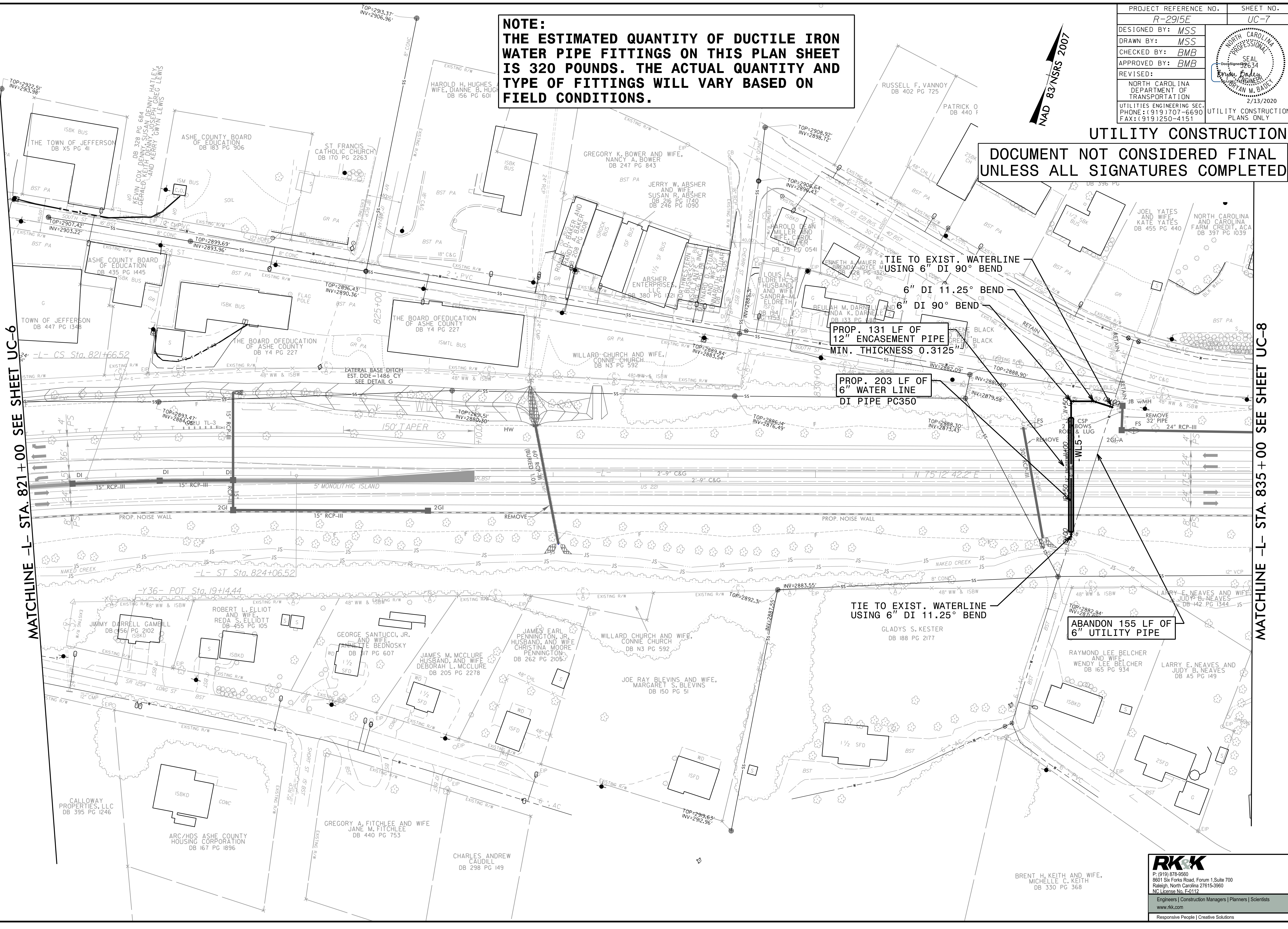


PROJECT REFERENCE NO.	SHEET NO.
R-2915E	UC-7
DESIGNED BY: MSS	
DRAWN BY: MSS	
CHECKED BY: BMB	
APPROVED BY: BMB	
REVISED:	
NORTH CAROLINA DEPARTMENT OF TRANSPORTATION	
UTILITIES ENGINEERING SEC. PHONE: (919) 707-6690 FAX: (919) 250-4151	
UTILITY CONSTRUCTION PLANS ONLY	

**NOTE:**  
**THE ESTIMATED QUANTITY OF DUCTILE IRON WATER PIPE FITTINGS ON THIS PLAN SHEET IS 320 POUNDS. THE ACTUAL QUANTITY AND TYPE OF FITTINGS WILL VARY BASED ON FIELD CONDITIONS.**

NAD 83 NRS 2007

**UTILITY CONSTRUCTION**  
**DOCUMENT NOT CONSIDERED FINAL**  
**UNLESS ALL SIGNATURES COMPLETED**



MATCHLINE -L- STA. 821+00 SEE SHEET UC-6

MATCHLINE -L- STA. 835+00 SEE SHEET UC-8

TIE TO EXIST. WATERLINE USING 6" DI 90° BEND

6" DI 11.25° BEND

6" DI 90° BEND

PROP. 131 LF OF 12" ENCASEMENT PIPE MIN. THICKNESS 0.3125"

PROP. 203 LF OF 6" WATER LINE DI PIPE PC350

TIE TO EXIST. WATERLINE USING 6" DI 11.25° BEND

ABANDON 155 LF OF 6" UTILITY PIPE



**NOTE:**  
**THE ESTIMATED QUANTITY OF DUCTILE IRON WATER PIPE FITTINGS ON THIS PLAN SHEET IS 225 POUNDS. THE ACTUAL QUANTITY AND TYPE OF FITTINGS WILL VARY BASED ON FIELD CONDITIONS.**

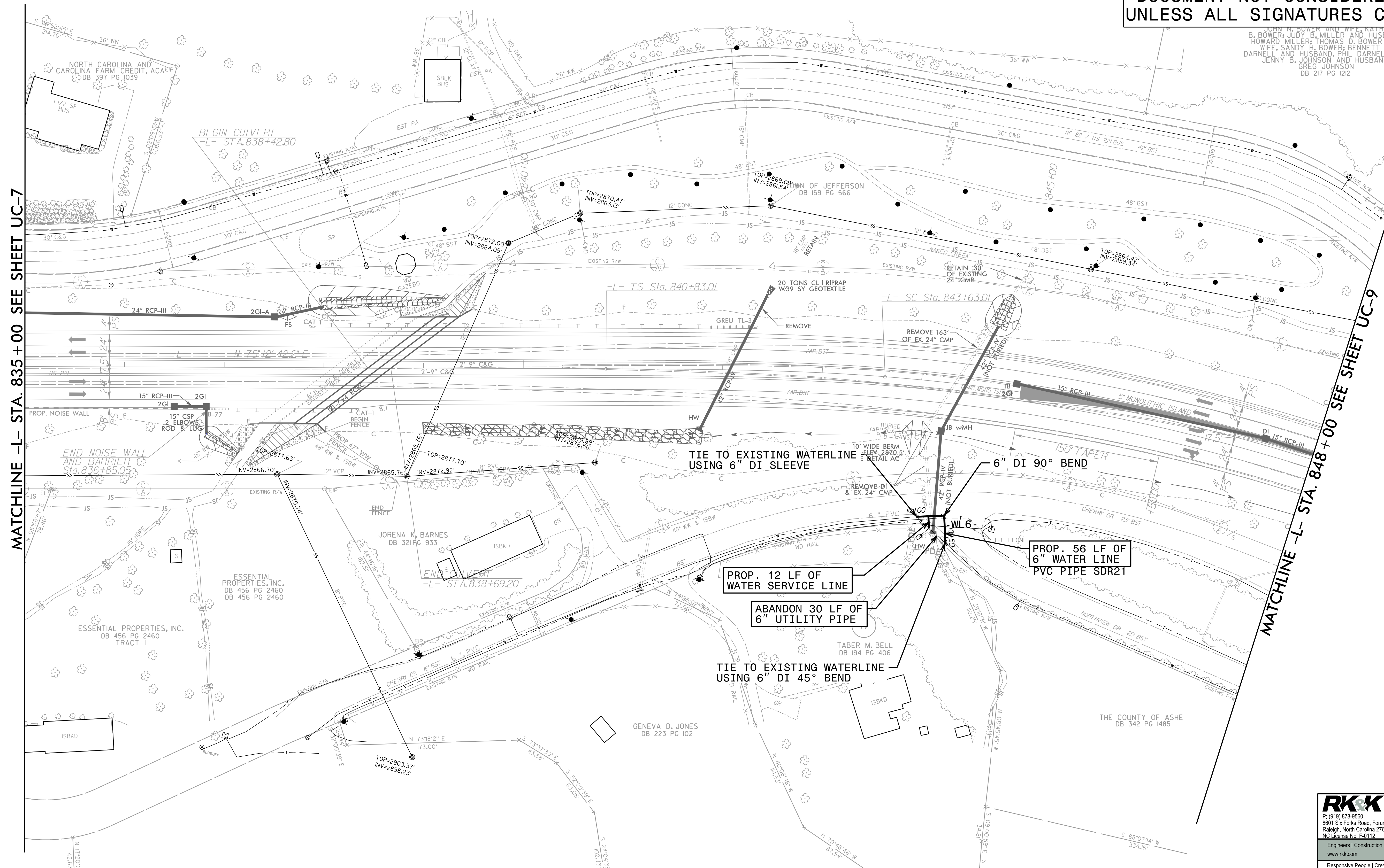
JENNIE W. HIGHTOWER, EMILY H. JOHNSTON AND JOSEPH E. HIGHTOWER  
 DB 343 PG 1044

NAD 83/NSRS 2007

PROJECT REFERENCE NO.	SHEET NO.
R-2915E	UC-8
DESIGNED BY: MSS	
DRAWN BY: MSS	
CHECKED BY: BMB	
APPROVED BY: BMB	
REVISED:	
NORTH CAROLINA DEPARTMENT OF TRANSPORTATION UTILITIES ENGINEERING SEC. PHONE: (919) 707-6690 FAX: (919) 250-4151	
UTILITY CONSTRUCTION PLANS ONLY	

**UTILITY CONSTRUCTION**  
**DOCUMENT NOT CONSIDERED FINAL**  
**UNLESS ALL SIGNATURES COMPLETED**

JOHN N. BOWER AND WIFE, KATHY B. BOWER; JUDY B. MILLER AND HUSBAND, HOWARD MILLER; THOMAS D. BOWER AND WIFE, SANDY H. BOWER; BENNETT B. DARNELL AND HUSBAND, PHIL DARNELL; AND JENNY B. JOHNSON AND HUSBAND, GREG JOHNSON  
 DB 217 PG 1212



MATCHLINE -L- STA. 835 + 00 SEE SHEET UC-7

MATCHLINE -L- STA. 848 + 00 SEE SHEET UC-9

TIE TO EXISTING WATERLINE USING 6" DI SLEEVE

PROP. 12 LF OF WATER SERVICE LINE

ABANDON 30 LF OF 6" UTILITY PIPE

TIE TO EXISTING WATERLINE USING 6" DI 45° BEND

6" DI 90° BEND

PROP. 56 LF OF 6" WATER LINE PVC PIPE SDR21

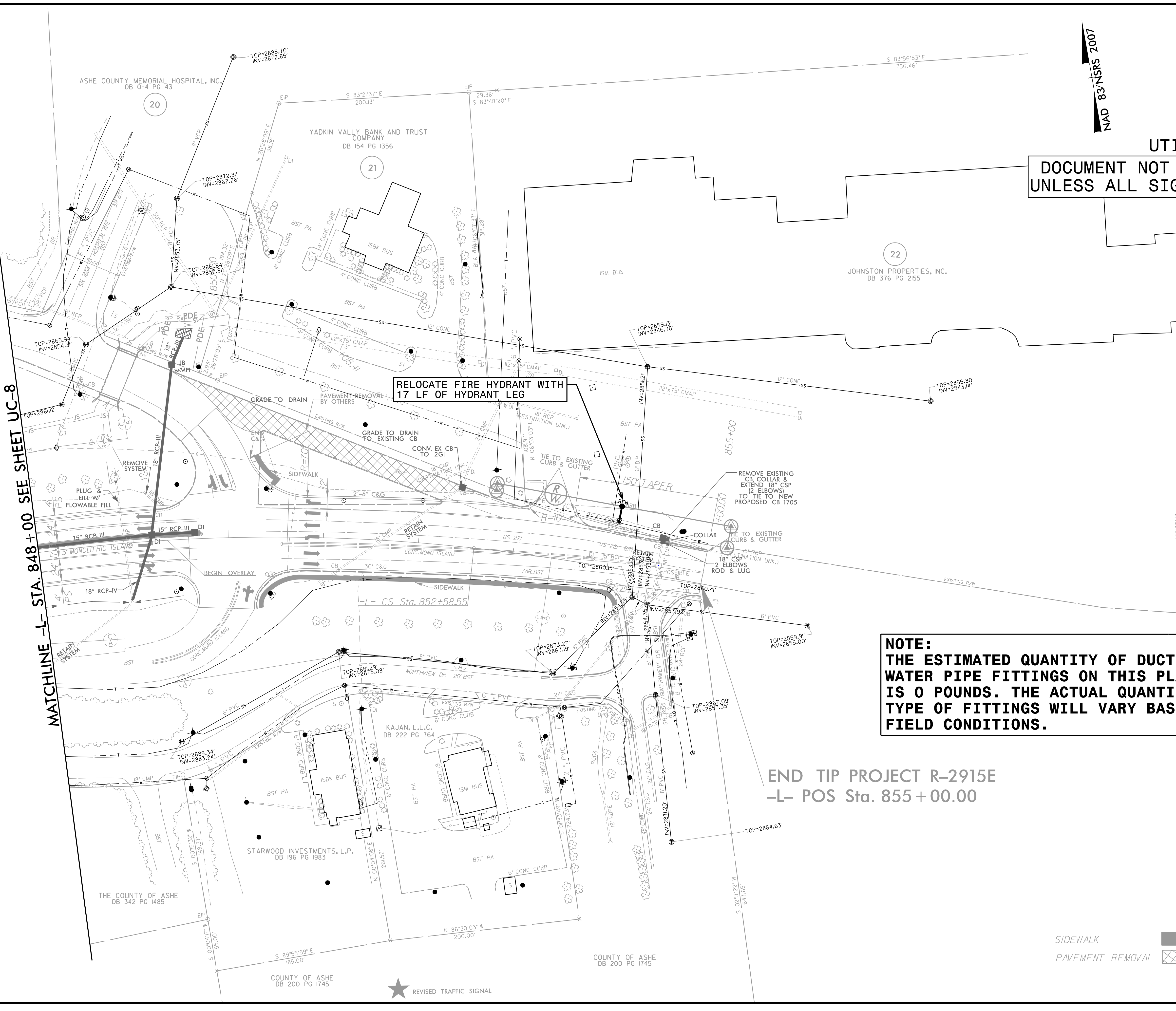


PROJECT REFERENCE NO.	SHEET NO.
R-2915E	UC-9
DESIGNED BY: MSS	
DRAWN BY: MSS	
CHECKED BY: BMB	
APPROVED BY: BMB	
REVISED:	
NORTH CAROLINA DEPARTMENT OF TRANSPORTATION	
UTILITIES ENGINEERING SEC. PHONE: (919) 707-6690 FAX: (919) 250-4151	
2/13/2020 PLANS ONLY	

NAD 83 NSRS 2007

### UTILITY CONSTRUCTION

**DOCUMENT NOT CONSIDERED FINAL  
UNLESS ALL SIGNATURES COMPLETED**



**RELOCATE FIRE HYDRANT WITH  
17 LF OF HYDRANT LEG**

**NOTE:  
THE ESTIMATED QUANTITY OF DUCTILE IRON  
WATER PIPE FITTINGS ON THIS PLAN SHEET  
IS 0 POUNDS. THE ACTUAL QUANTITY AND  
TYPE OF FITTINGS WILL VARY BASED ON  
FIELD CONDITIONS.**

**END TIP PROJECT R-2915E  
-L- POS Sta. 855 + 00.00**

**MATCHLINE -L- STA. 848 + 00 SEE SHEET UC-8**

2/13/2020  
C:\projects\Engineering\UC\Proj\R-2915E\_Ut\_rdj17\_UC09\_psh.dgn

SIDEWALK  
PAVEMENT REMOVAL

P: (919) 878-9560  
 8601 Six Forks Road, Forum 1, Suite 700  
 Raleigh, North Carolina 27615-3960  
 NC License No. F-0112  
 Engineers | Construction Managers | Planners | Scientists  
 www.rkk.com  
 Responsive People | Creative Solutions

★ REVISED TRAFFIC SIGNAL

THE COUNTY OF ASHE  
DB 342 PG 1485

COUNTY OF ASHE  
DB 200 PG 1745

COUNTY OF ASHE  
DB 200 PG 1745

JOHNSTON PROPERTIES, INC.  
DB 376 PG 2155

YADKIN VALLEY BANK AND TRUST  
COMPANY  
DB 154 PG 1356

ASHE COUNTY MEMORIAL HOSPITAL, INC.  
DB 0-4 PG 43

KAJAN, L.L.C.  
DB 222 PG 764

STARWOOD INVESTMENTS, L.P.  
DB 196 PG 1983

20

21

22

L- CS Sta. 852+58.55

REVISED TRAFFIC SIGNAL



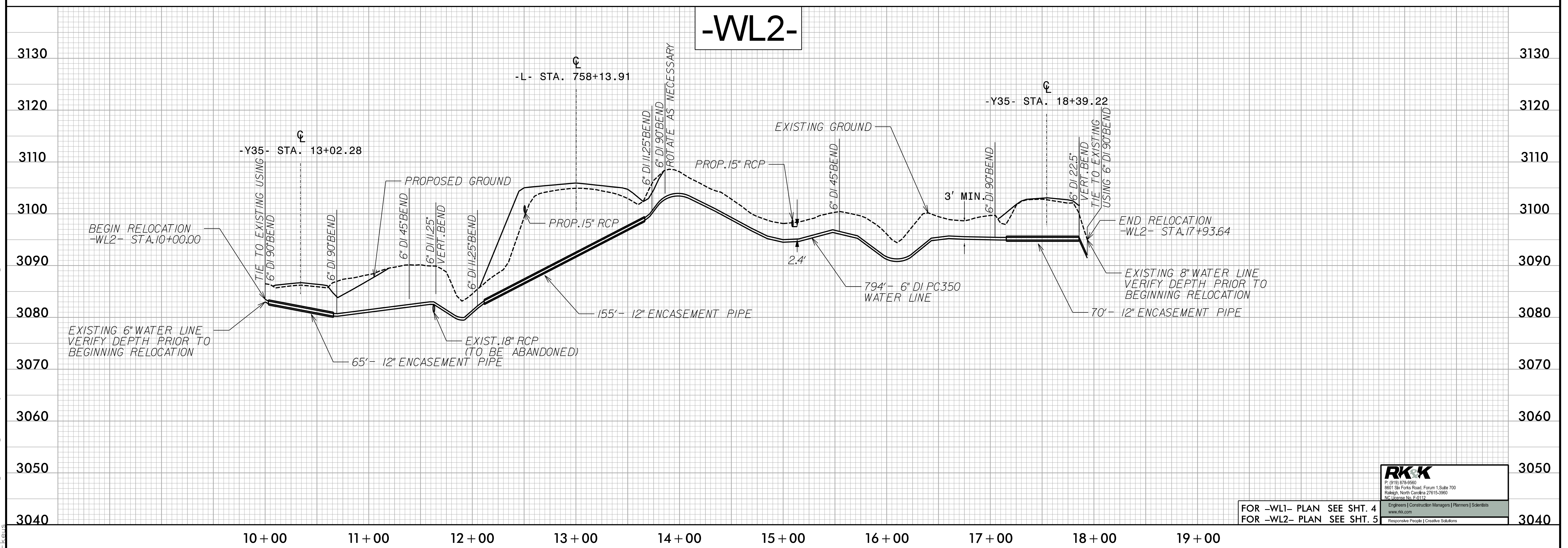
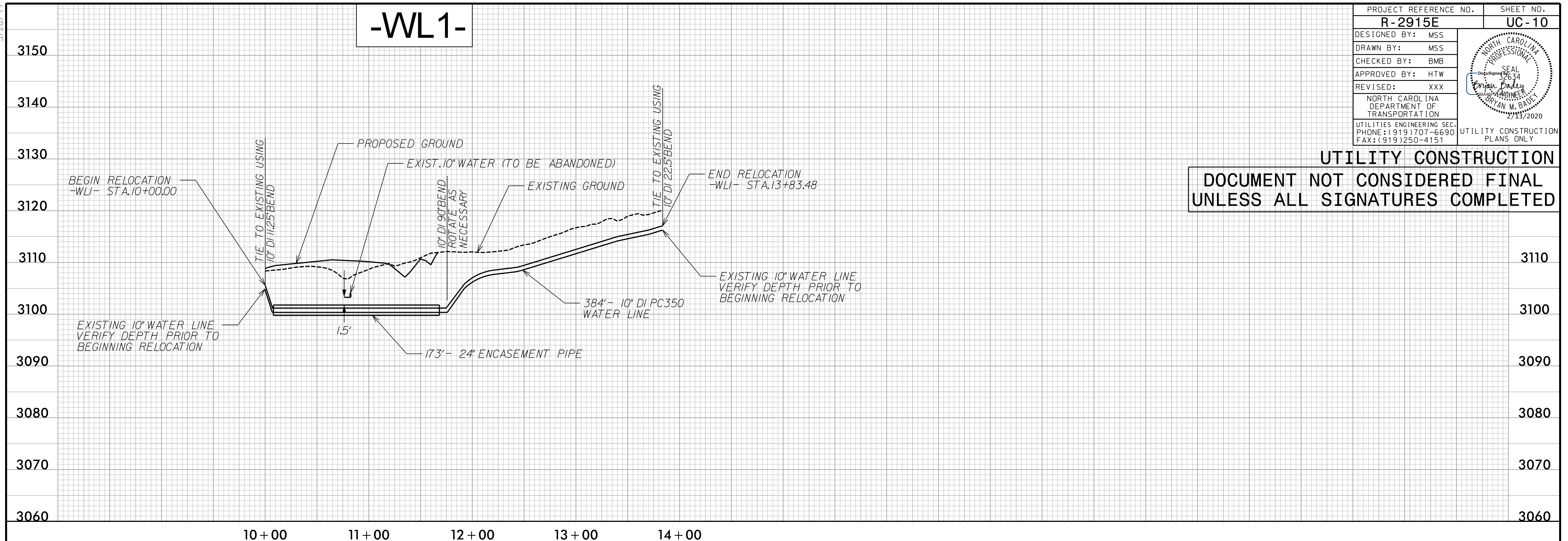
5/28/19

2/13/2020  
C:\Users\Engineering\OneDrive\Projects\2915E-Ut-UC10-pfl.psh.dgn

PROJECT REFERENCE NO.	SHEET NO.
R-2915E	UC-10
DESIGNED BY: MSS	
DRAWN BY: MSS	
CHECKED BY: BMB	
APPROVED BY: HTW	
REVISED: XXX	
NORTH CAROLINA DEPARTMENT OF TRANSPORTATION	
UTILITIES ENGINEERING SEC. PHONE: (919) 707-6690 FAX: (919) 250-4151	

### UTILITY CONSTRUCTION

**DOCUMENT NOT CONSIDERED FINAL  
UNLESS ALL SIGNATURES COMPLETED**



FOR -WL1- PLAN SEE SHT. 4  
 FOR -WL2- PLAN SEE SHT. 5

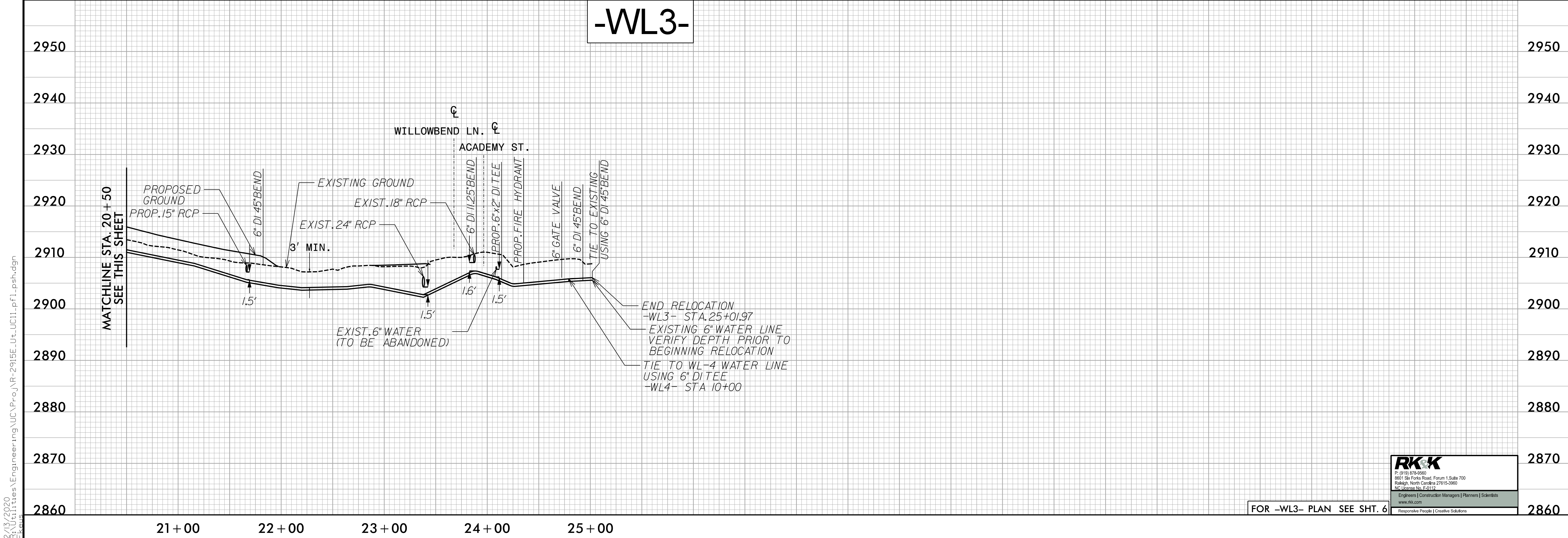
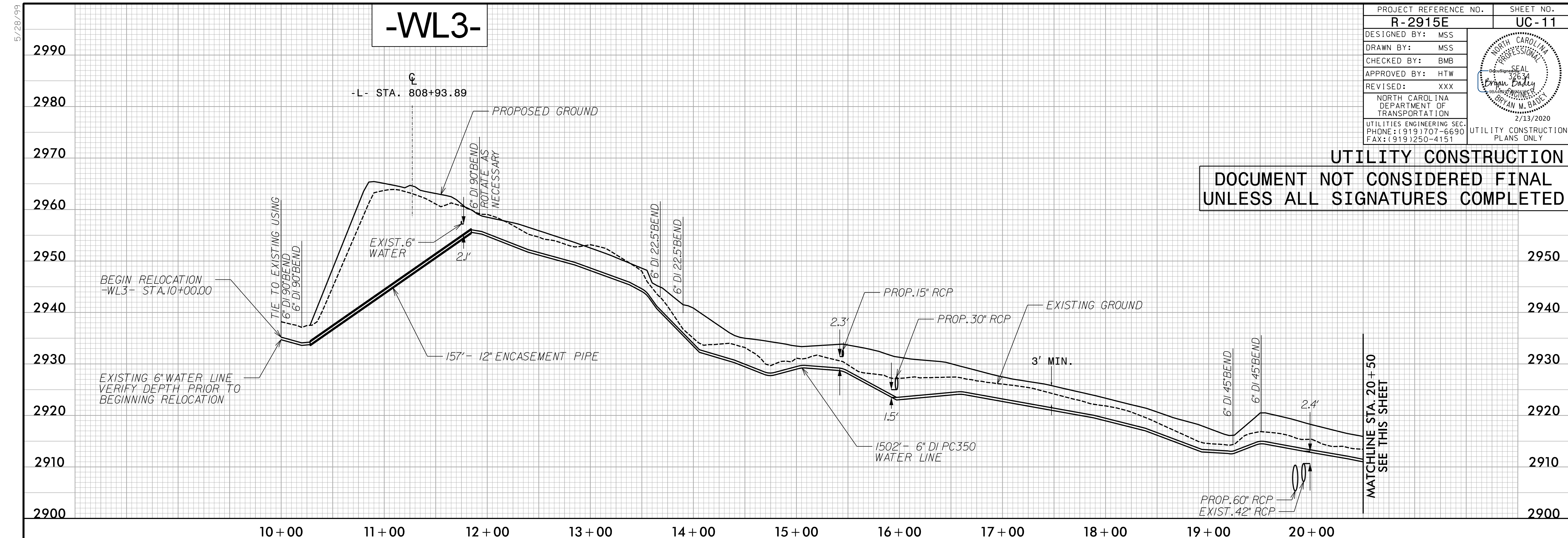
**RKK**  
 P. (919) 678-6560  
 8001 Six Forks Road, Forest 1, Suite 700  
 Raleigh, North Carolina 27615-3900  
 NC License No. E-11172

Engineers | Construction Managers | Planners | Scientists  
 www.rkk.com  
 Responsive People | Creative Solutions



5/28/19

2/13/2020  
C:\Users\Engineering\OneDrive\Projects\2019\15E\_Ut\_UC11.pfl.psh.dgn



PROJECT REFERENCE NO.	SHEET NO.
R-2915E	UC-11
DESIGNED BY: MSS	
DRAWN BY: MSS	
CHECKED BY: BMB	
APPROVED BY: HTW	
REVISER: XXX	2/13/2020
NORTH CAROLINA DEPARTMENT OF TRANSPORTATION UTILITIES ENGINEERING SECTION PHONE: (919) 707-6690 FAX: (919) 250-4151	
UTILITY CONSTRUCTION PLANS ONLY	

**UTILITY CONSTRUCTION**  
**DOCUMENT NOT CONSIDERED FINAL**  
**UNLESS ALL SIGNATURES COMPLETED**



FOR -WL3- PLAN SEE SHT. 6



