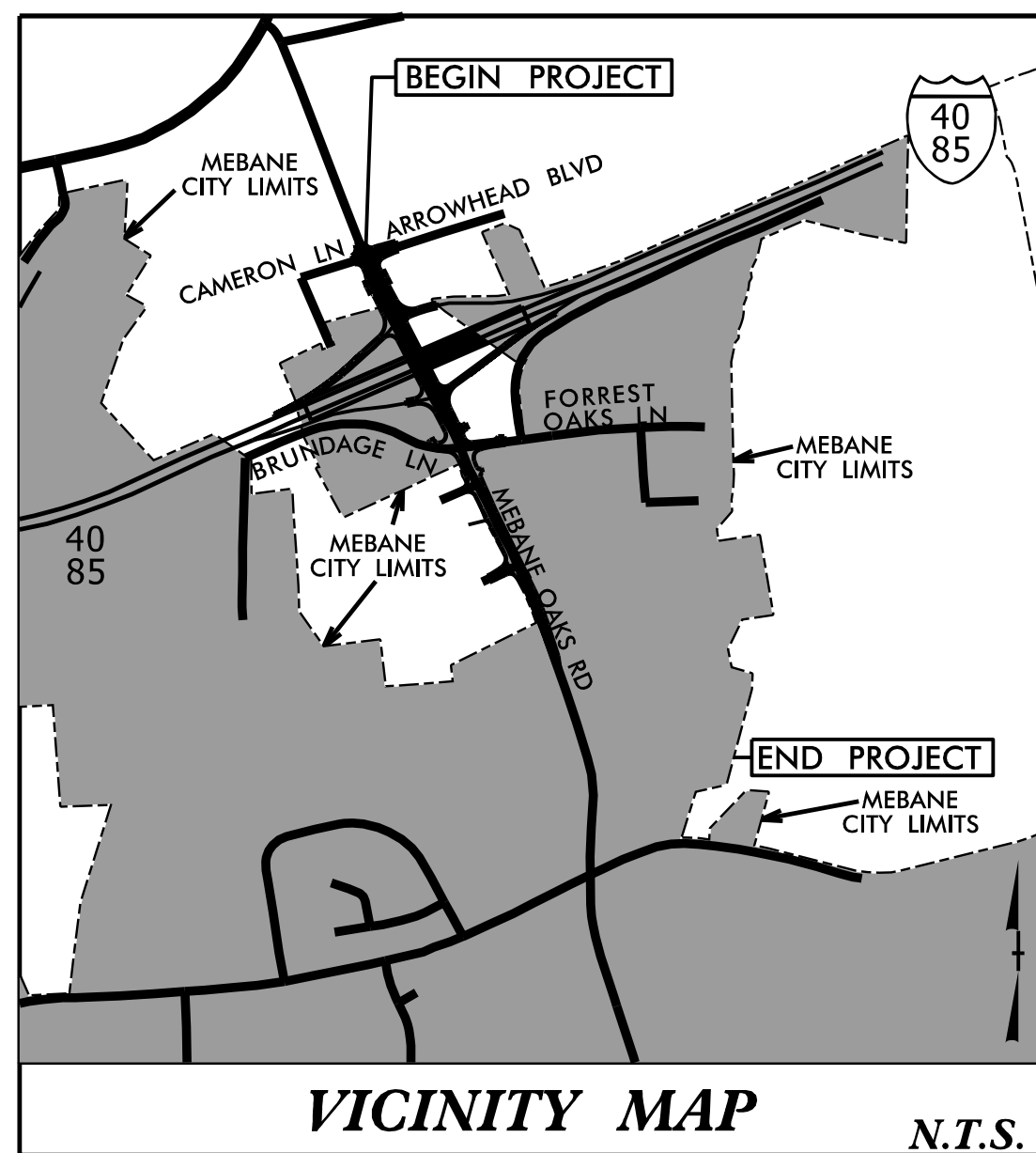


09/08/99

TIP PROJECT: I-5711



STATE OF NORTH CAROLINA
DIVISION OF HIGHWAYS

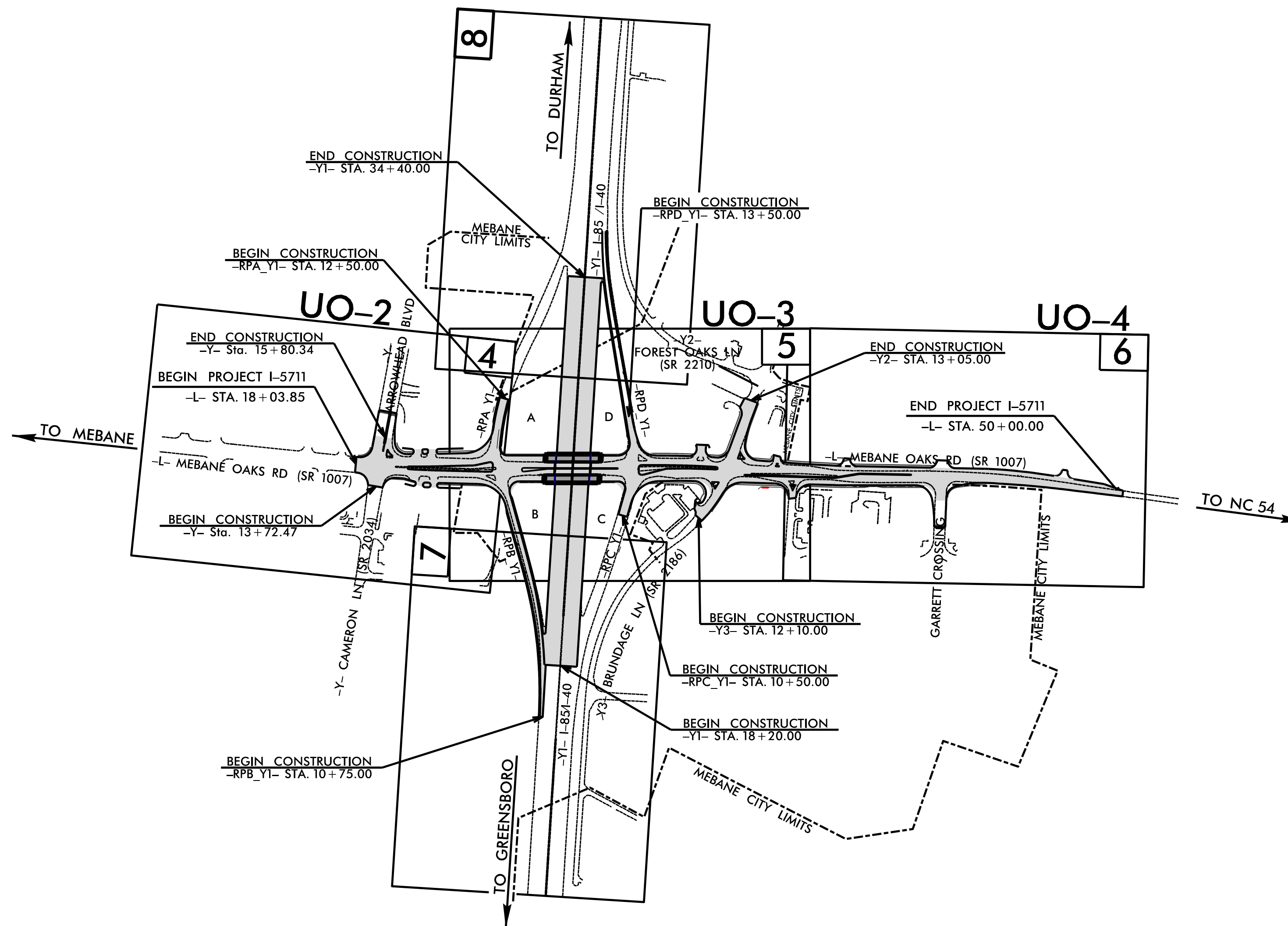
**UTILITIES BY OTHERS PLANS
ALAMANCE COUNTY**

**LOCATION: INTERCHANGE IMPROVEMENTS AT I-40/I-85
AND SR 1007 (MEBANE OAKS RD) IN MEBANE**

TYPE OF WORK: POWER (DISTRIBUTION), GAS (DISTRIBUTION), COMMUNICATIONS

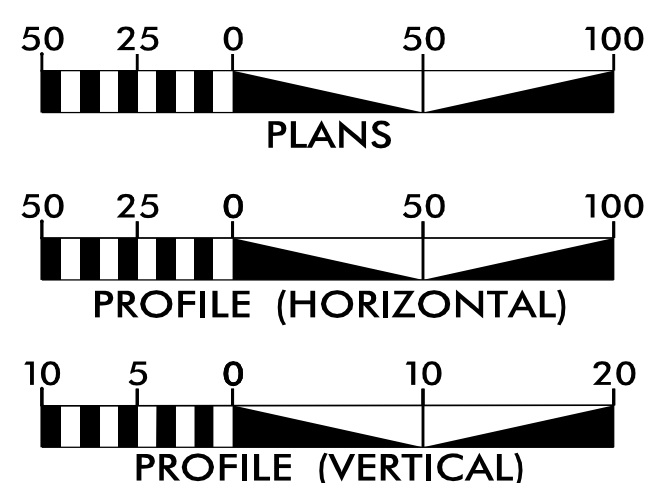
T.I.P. NO.	SHEET NO.
I-5711	UO-1

NOTE:
ALL UTILITY WORK SHOWN ON THIS SHEET WILL BE DONE BY OTHERS. NO PAYMENT WILL BE MADE TO THE CONTRACTOR FOR UTILITY WORK SHOWN ON THIS SHEET.



CONTRACT:

GRAPHIC SCALES



INDEX OF SHEETS

<u>SHEET NO.:</u>	<u>DESCRIPTION:</u>
UO-1	TITLE SHEET
UO-2 THRU UO-4	UBO PLAN SHEETS

UTILITY OWNERS WITH CONFLICTS

- (A) POWER (DISTRIBUTION) - DUKE
- (B) POWER (DISTRIBUTION)- PIEDMONT EMC
- (C) GAS (DISTRIBUTION) - PSNC
- (D) COMMUNICATIONS - CENTURYLINK
- (E) COMMUNICATIONS - SPECTRUM
- (F) COMMUNICATIONS - LEVEL 3

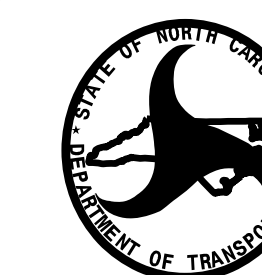
PREPARED IN THE OFFICE OF:

SO-DEEP | SAM NC

SO-DEEP | SAM NC, Inc.

2800-154 Sumner Boulevard, Raleigh, NC 27616 Tel 919-878-7466

Keith Garry UTILITY PROJECT MANAGER
Freddie Bunn PROJECT UTILITY COORDINATOR



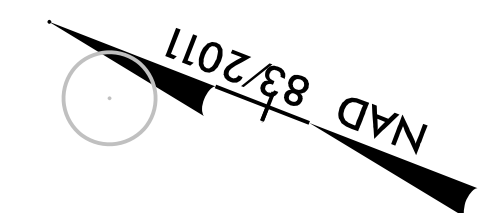
**DIVISION OF HIGHWAYS
UTILITIES UNIT**
1555 MAIL SERVICES CENTER
RALEIGH, NC 27699-1555
PHONE (919) 707-6690
FAX (919) 250-4151

Tucker Martin, P.E. UTILITIES REGIONAL ENGINEER
Ali Kouchehi, P.E. UTILITIES ENGINEER
Dayton Martin UTILITIES AREA COORDINATOR
Tanga Sampson UTILITIES COORDINATOR

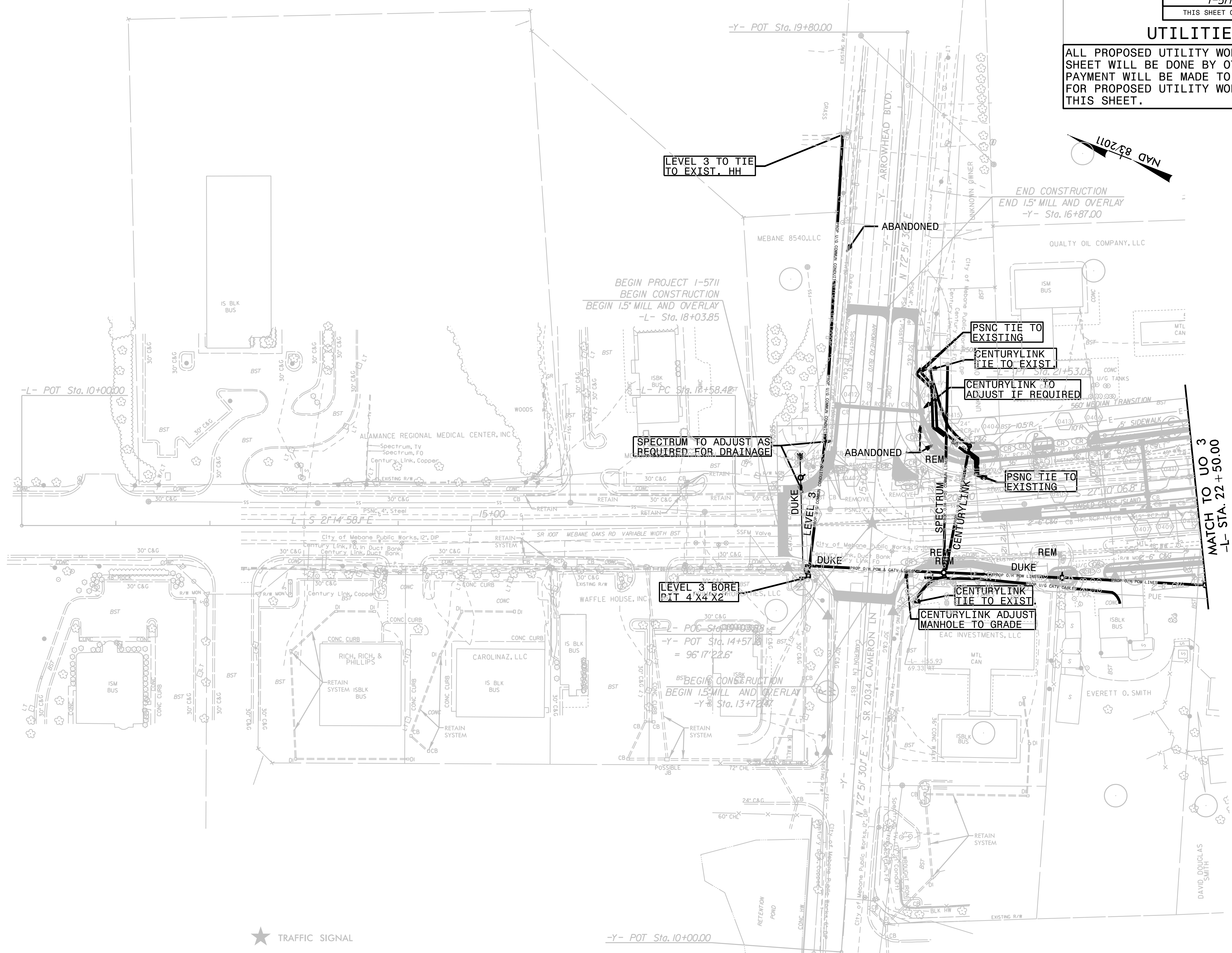
\$\$\$ SYSTEMS \$\$\$
\$\$\$ DESIGN \$\$\$
\$\$\$ SUBMITTALS \$\$\$

UTILITIES BY OTHERS

ALL PROPOSED UTILITY WORK SHOWN ON THIS SHEET WILL BE DONE BY OTHERS. NO PAYMENT WILL BE MADE TO THE CONTRACTOR FOR PROPOSED UTILITY WORK SHOWN ON THIS SHEET.



REVISIONS
 8/17/99
 C:\P\1\5711\RDY\U0-2\U0-2.DWG
 0 1 2 3 4 5 6 7 8 9 10 11 12 13 14 15 16 17 18 19 20 21 22 23 24 25 26 27 28 29 30 31 32 33 34 35 36 37 38 39 40 41 42 43 44 45 46 47 48 49 50 51 52 53 54 55 56 57 58 59 60 61 62 63 64 65 66 67 68 69 70 71 72 73 74 75 76 77 78 79 80 81 82 83 84 85 86 87 88 89 90 91 92 93 94 95 96 97 98 99 100



LEVEL 3 TO TIE TO EXIST. HH

PSNC TIE TO EXISTING

CENTURYLINK TIE TO EXIST

CENTURYLINK TO ADJUST IF REQUIRED

SPECTRUM TO ADJUST AS REQUIRED FOR DRAINAGE

PSNC TIE TO EXISTING

LEVEL 3 BORE PIT 4'X4'X2'

CENTURYLINK TIE TO EXIST

CENTURYLINK ADJUST MANHOLE TO GRADE

MATCH TO UO 3
 -L- STA. 22 + 50.00

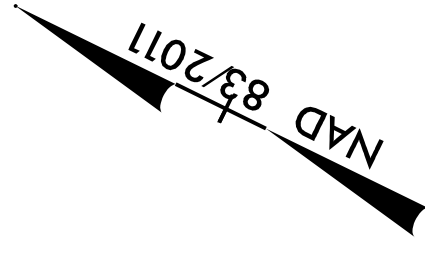


-Y- POT Sta. 10+00.00

UTILITIES BY OTHERS

ALL PROPOSED UTILITY WORK SHOWN ON THIS SHEET WILL BE DONE BY OTHERS. NO PAYMENT WILL BE MADE TO THE CONTRACTOR FOR PROPOSED UTILITY WORK SHOWN ON THIS SHEET.

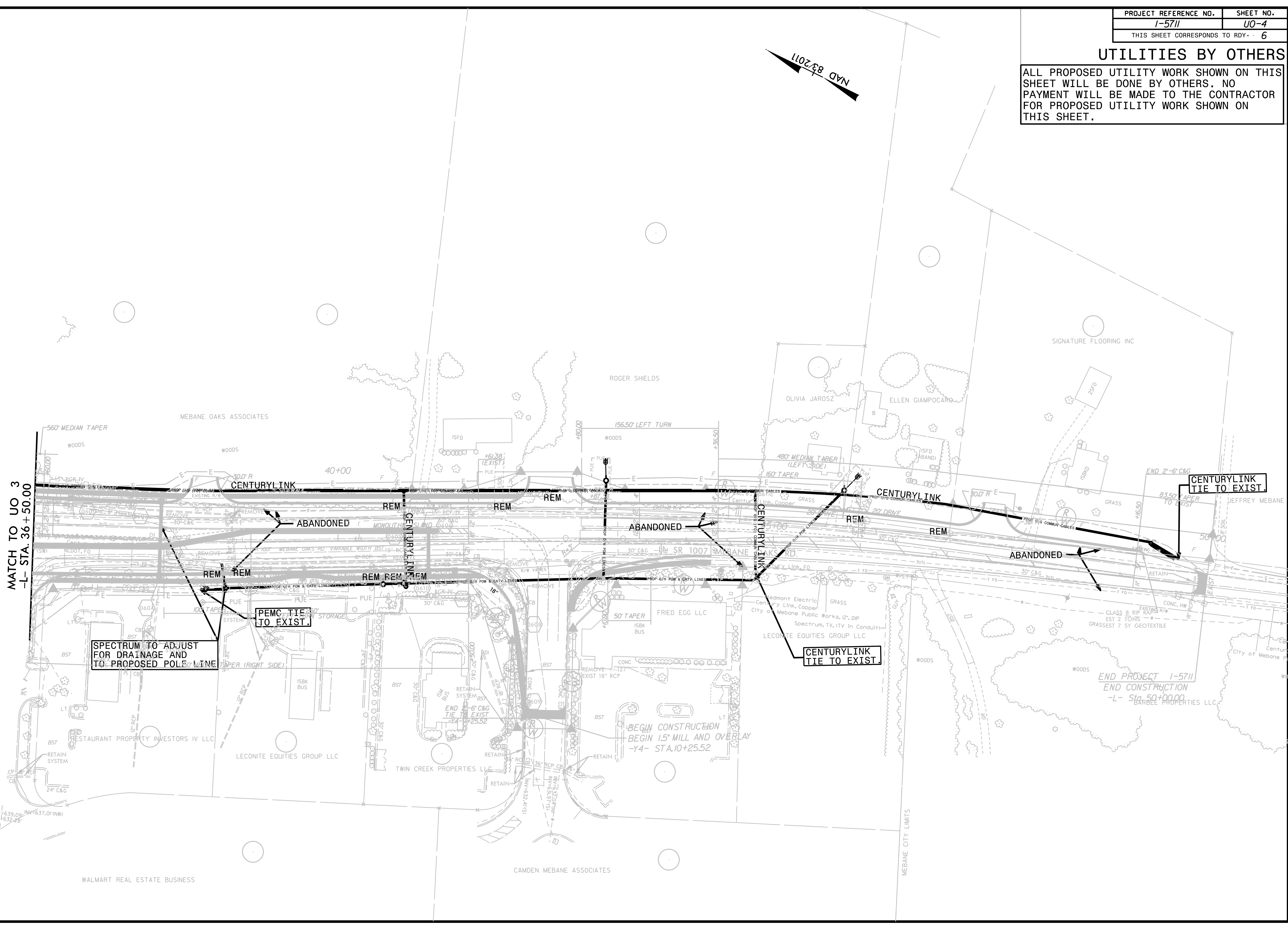
8/17/99



REVISIONS

MATCH TO UO 3
-L- STA. 36 + 50.00

639.05
632.26
637.01(NW)
632.26



SPECTRUM TO ADJUST FOR DRAINAGE AND TO PROPOSED POLE LINE

PUE TIE TO EXIST

CENTURYLINK TIE TO EXIST

CENTURYLINK TIE TO EXIST

END PROJECT 1-5711
END CONSTRUCTION
-L- Sta. 50+00.00
BARBEE PROPERTIES LLC

BEGIN CONSTRUCTION
BEGIN 1.5\"/>