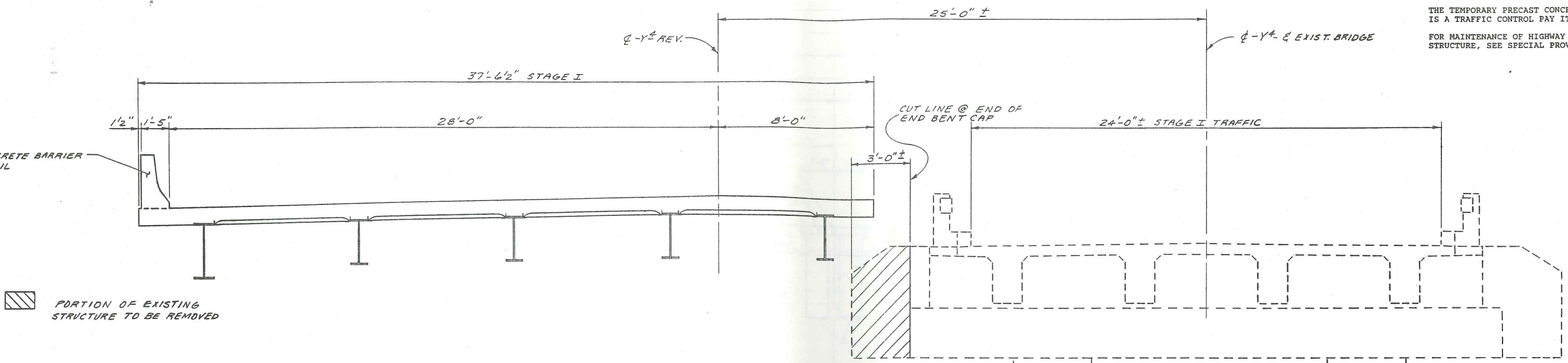
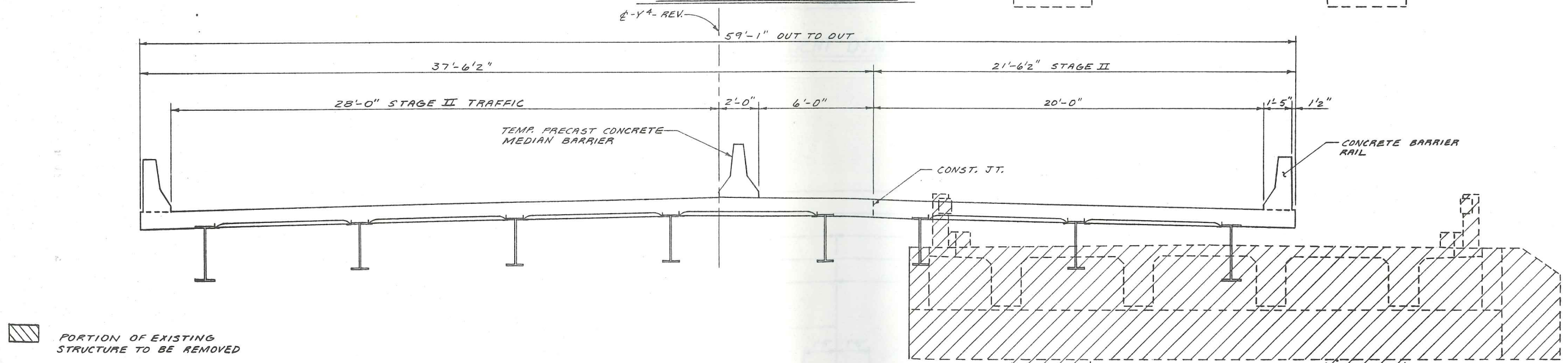


NOTES

FOR TRAFFIC PHASING, SEE TRAFFIC CONTROL PLANS.
 THE TEMPORARY PRECAST CONCRETE MEDIAN BARRIER IS A TRAFFIC CONTROL PAY ITEM.
 FOR MAINTENANCE OF HIGHWAY TRAFFIC BENEATH PROPOSED STRUCTURE, SEE SPECIAL PROVISIONS.



STAGE I CONSTRUCTION



STAGE II CONSTRUCTION

REMOVE REMAINING PORTION OF EXISTING STRUCTURE AS REQUIRED

PROJECT No. 8.1500310

ALAMANCE-ORANGE COUNTY

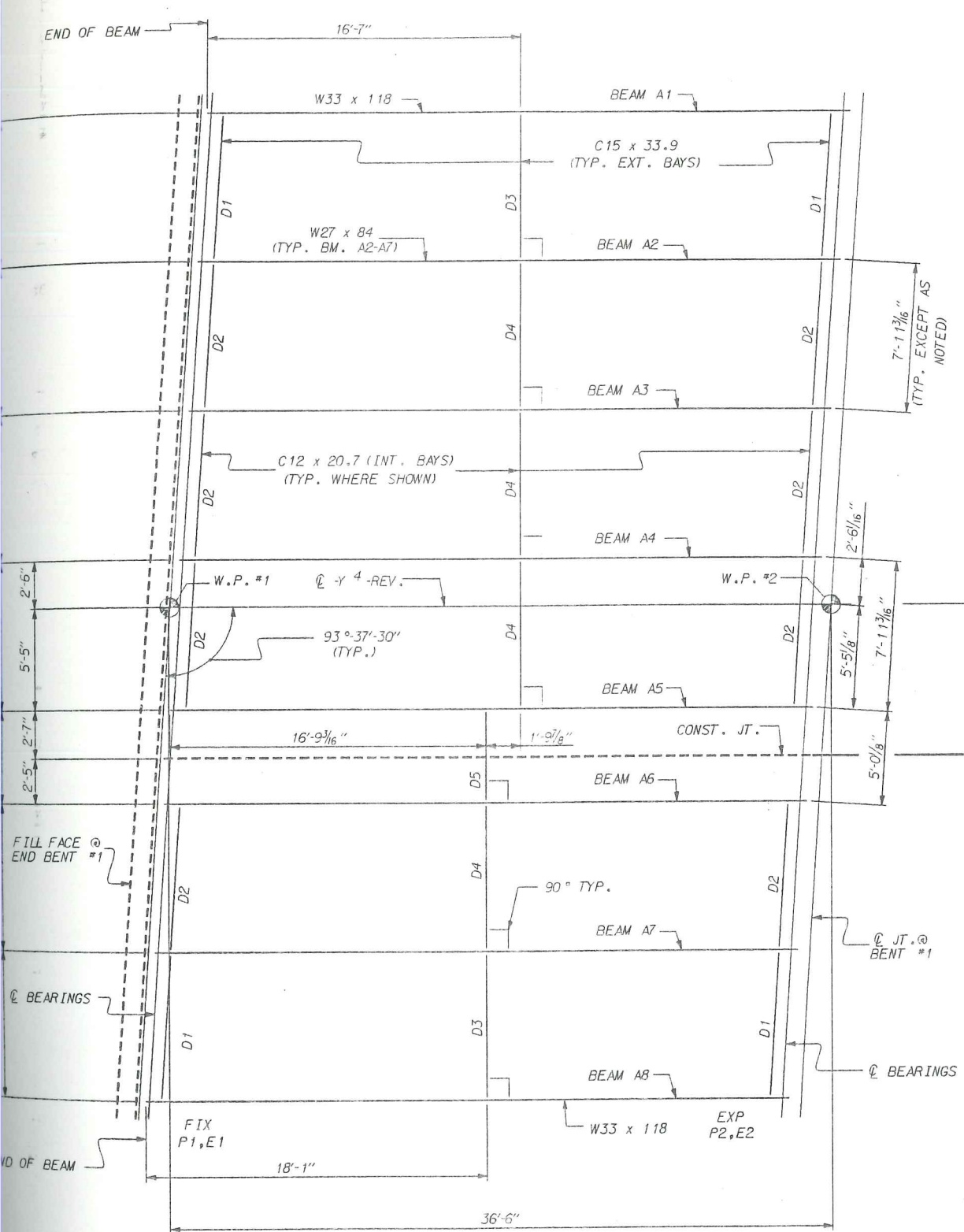
STATION: 329+86.22-L-

STATE OF NORTH CAROLINA
 DEPARTMENT OF TRANSPORTATION
 RALEIGH

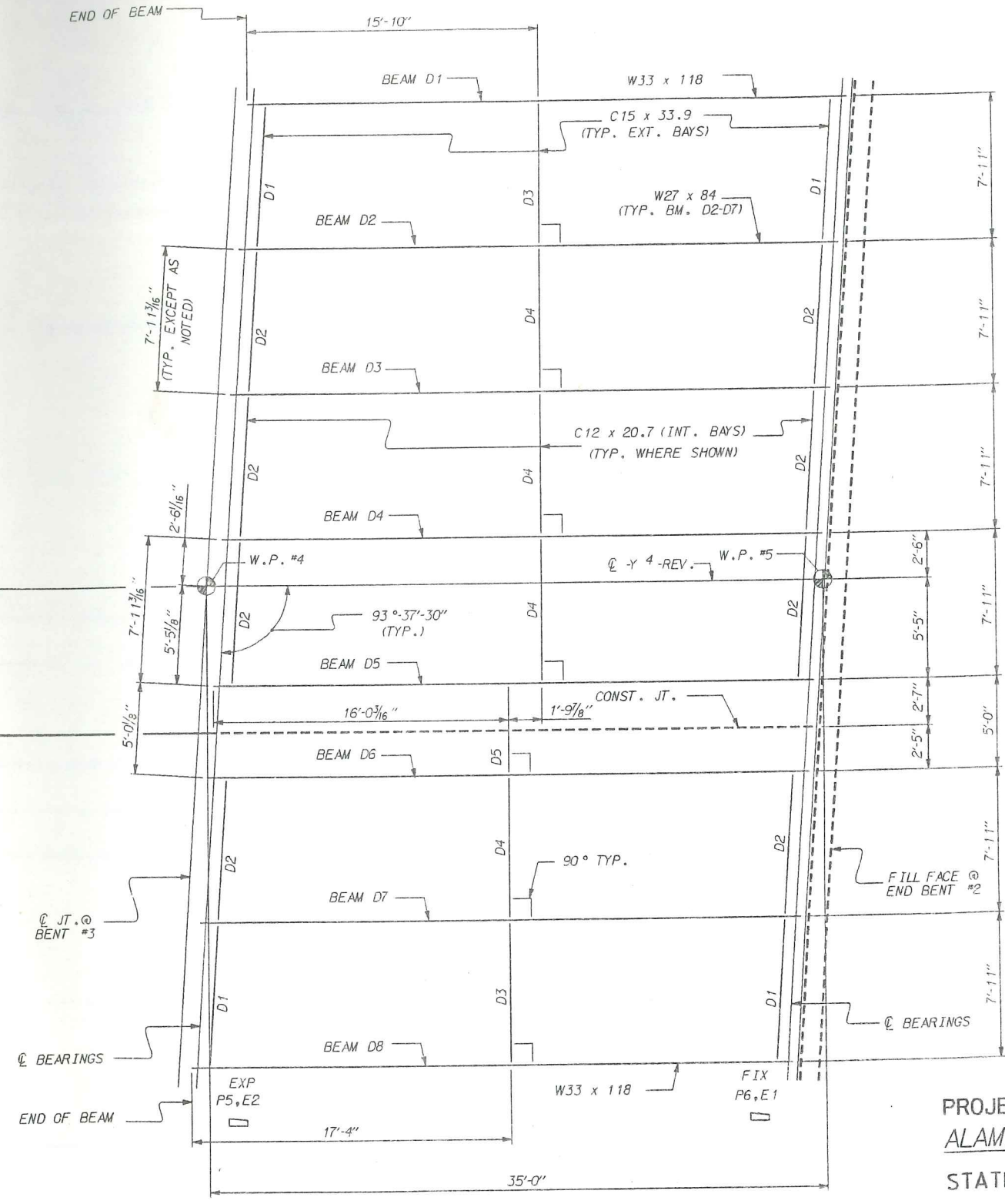
STAGING LAYOUT

JUNE

1991



SPAN A



SPAN D

FRAMING PLAN

PROJECT NO. 8.T5003 10
 ALAMANCE-ORANGE COUNTY
 STATION: 329+86.22-L

STATE OF NORTH CAROLINA
 DEPARTMENT OF TRANSPORTATION
 RALEIGH
 SUPERSTRUCTURE
 STRUCTURAL STEEL
 FRAMING PLAN
 (SPANS A & D)
 STAGE I & II
 APRIL 1992

REVISIONS						SHEET NO.	
NO.	BY:	DATE:	NO.	BY:	DATE:	5-15	
1			3			TOTAL SHEETS	
2			4			67	

NOTES

ALL STRUCTURAL STEEL SHALL BE UNPAINTED ASTM A588 STEEL WITH A MINIMUM YIELD STRENGTH OF 50,000 PSI, UNLESS OTHERWISE NOTED ON THE PLANS.

ALL DIMENSIONS SHOWN ARE HORIZONTAL OR VERTICAL, UNLESS OTHERWISE NOTED.

ALL FIELD CONNECTIONS TO BE 7/8" DIA. HIGH STRENGTH BOLTS UNLESS OTHERWISE NOTED.

A CHARPY V-NOTCH TEST IS REQUIRED FOR I-BEAMS AND COVER PLATES, SEE SPECIAL PROVISIONS.

CAMBERED BEAM LENGTHS SHALL BE ADJUSTED AND BEARINGS ARE TO BE PLACED ON THE CAMBERED BEAMS SO AS TO BE ALIGNED WITH THE ANCHORS AFTER THE DEAD LOAD DEFLECTION HAS OCCURRED. SHOP PLANS SHALL BE PREPARED ACCORDINGLY.

CONNECTOR PLATES ARE NOT REQUIRED ON THE OUTSIDE OF EXTERIOR BEAMS.

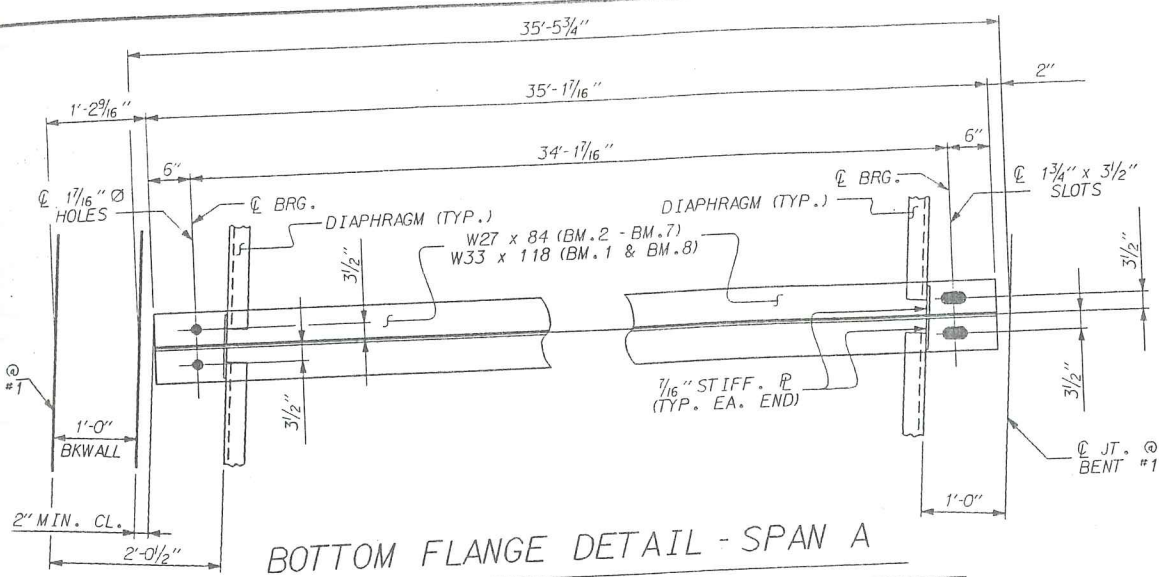
NUTS ON BOLTS FOR CONNECTING CHANNEL TO CONNECTOR PLATE SHALL BE LEFT LOOSE FOR PURPOSE OF ADJUSTMENT UNTIL BOTH SIDES OF SLAB HAVE BEEN POURED.

SOLE PLATE SHALL BE ASTM A588 AND SHALL NOT BE GALVANI ZED. ANCHOR BOLTS AND NUTS SHALL BE IN ACCORDANCE WITH THE STANDARD SPECIFICATIONS.

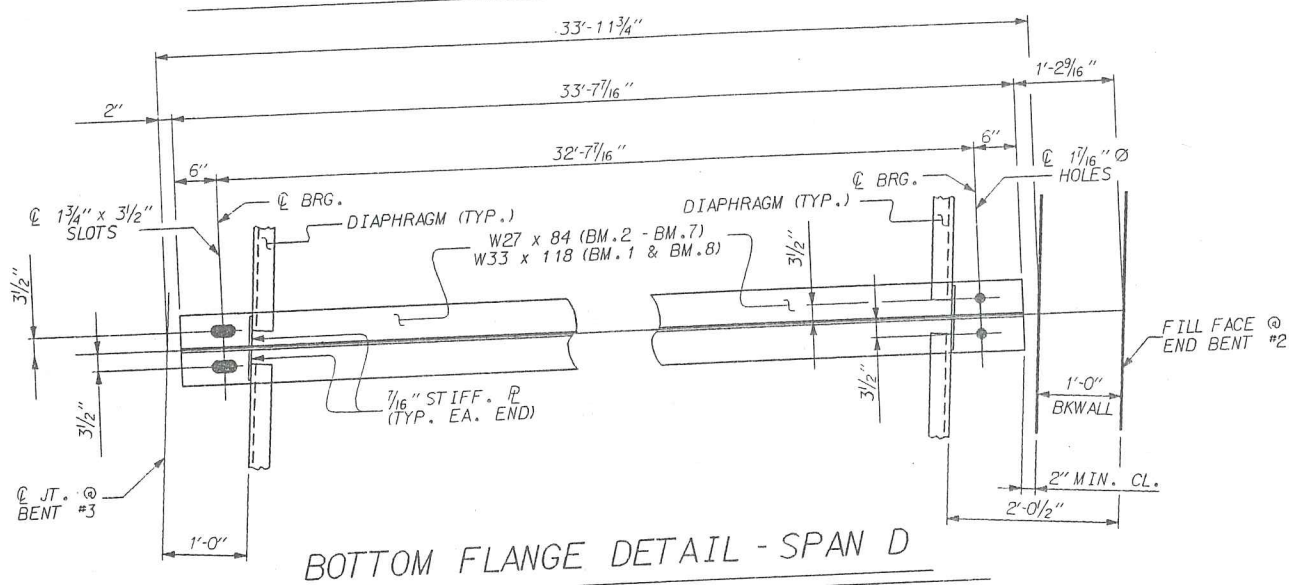
FOR SURFACE PREPARATION AND PROTECTION OF UNPAINTED STRUCTURAL STEEL, SEE SPECIAL PROVISIONS.

FOR HIGH STRENGTH BOLTS, NUTS, AND WASHERS, SEE SPECIAL PROVISIONS.

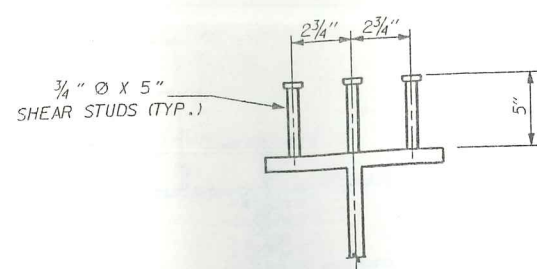
FOR STRUCTURAL STEEL, SEE SPECIAL PROVISIONS.



BOTTOM FLANGE DETAIL - SPAN A

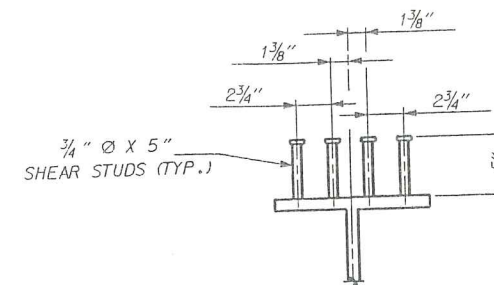


BOTTOM FLANGE DETAIL - SPAN D



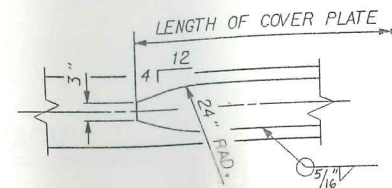
SHEAR STUD DETAILS

SPAN A & D (BM.2 - BM.7)



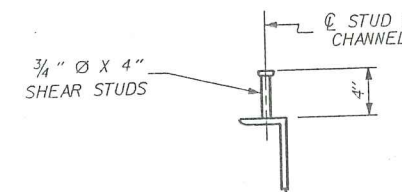
SHEAR STUD DETAILS

SPAN A & D (BM.1 & BM.8)
SPAN B & C (ALL BMS.)

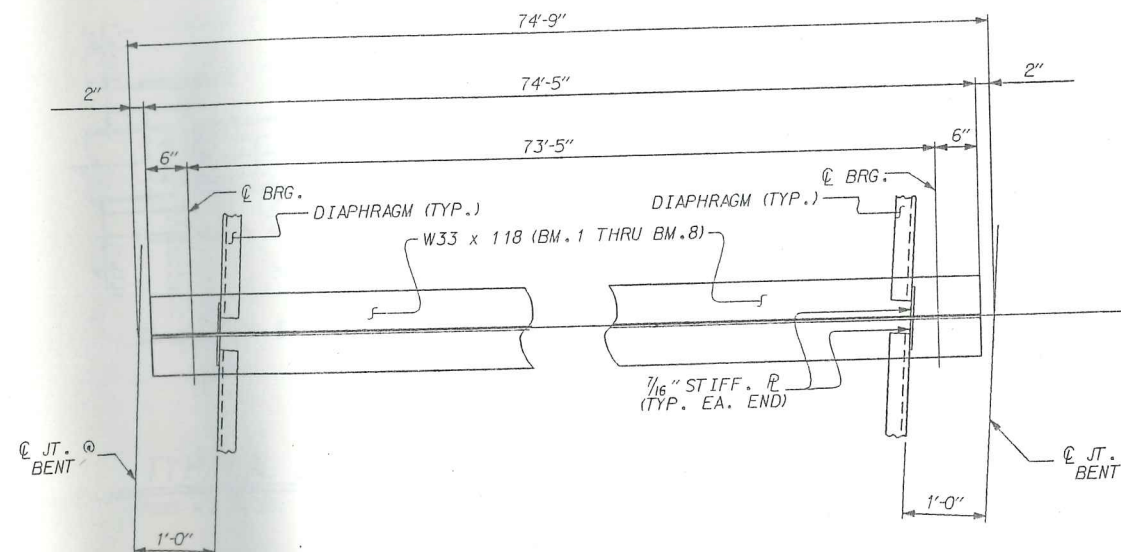


COVER PLATE DETAIL

NOTE: DO NOT WELD AT TERMINAL END WITHIN A FIELD SPLICE

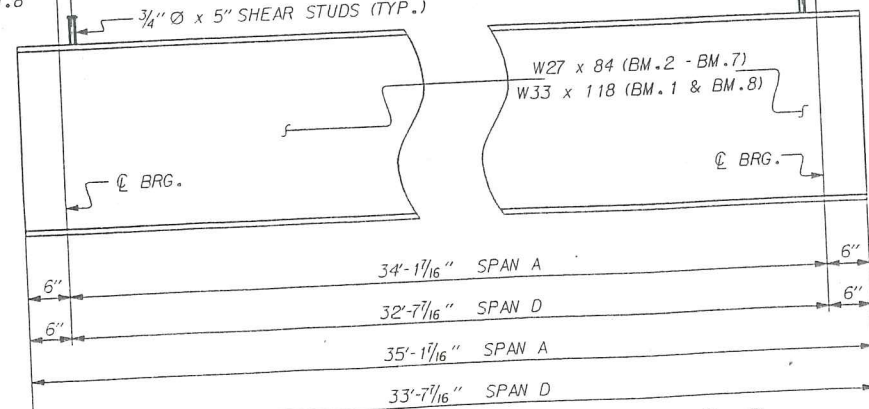


SHEAR STUD DETAILS

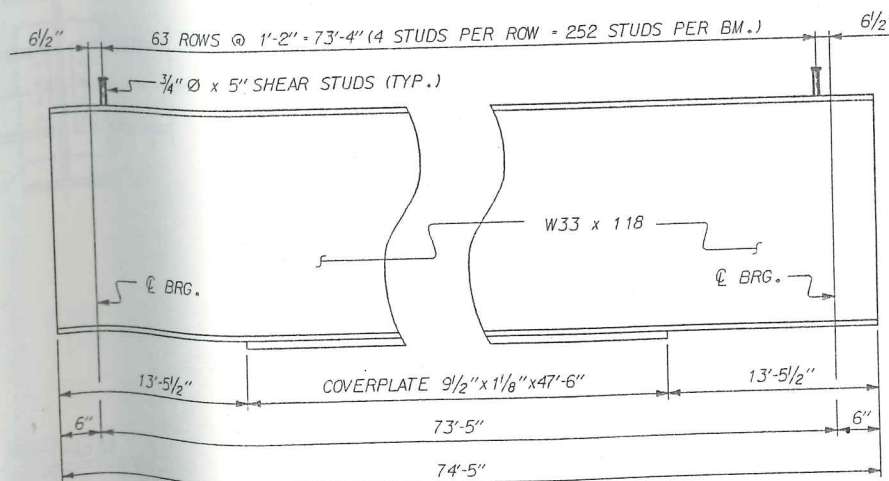


BOTTOM FLANGE DETAIL - SPANS B AND C

2 3/16" SPAN A BM.2 - BM.7	46 ROWS @ 9" = 33'-9" (3 STUDS PER ROW = 138 STUDS PER BM.) BM.2 THRU BM.7	2 1/4" SPAN A BM.2 - BM.7
1 1/16" SPAN A BM.1 & BM.8	49 ROWS @ 8 1/2" = 34'-0" (4 STUDS PER ROW = 196 STUDS PER BM.) BM.1 AND BM.8	3/4" SPAN A BM.1 & BM.8
3/16" SPAN D BM.2 - BM.7	47 ROWS @ 8 1/2" = 32'-7" (3 STUDS PER ROW = 141 STUDS PER BM.) BM.2 THRU BM.7	1/4" SPAN D BM.2 - BM.7
3 1/16" SPAN D BM.1 & BM.8	49 ROWS @ 8" = 32'-0" (4 STUDS PER ROW = 196 STUDS PER BM.) BM.1 AND BM.8	3 3/4" SPAN D BM.1 & BM.8



BEAM ELEVATION - SPANS A AND D



BEAM ELEVATION - SPANS B AND C

PROJECT NO. 8.T5003 10
ALAMANCE-ORANGE COUNTY
STATION: 329+86.22-L-

STATE OF NORTH CAROLINA DEPARTMENT OF TRANSPORTATION RALEIGH			
SUPERSTRUCTURE STRUCTURAL STEEL DETAILS			
APRIL 1992			
REVISIONS			
NO.	BY:	DATE:	NO. BY: DATE:
1			3
2			4
			SHEET NO. 5-18
			TOTAL SHEETS 67

