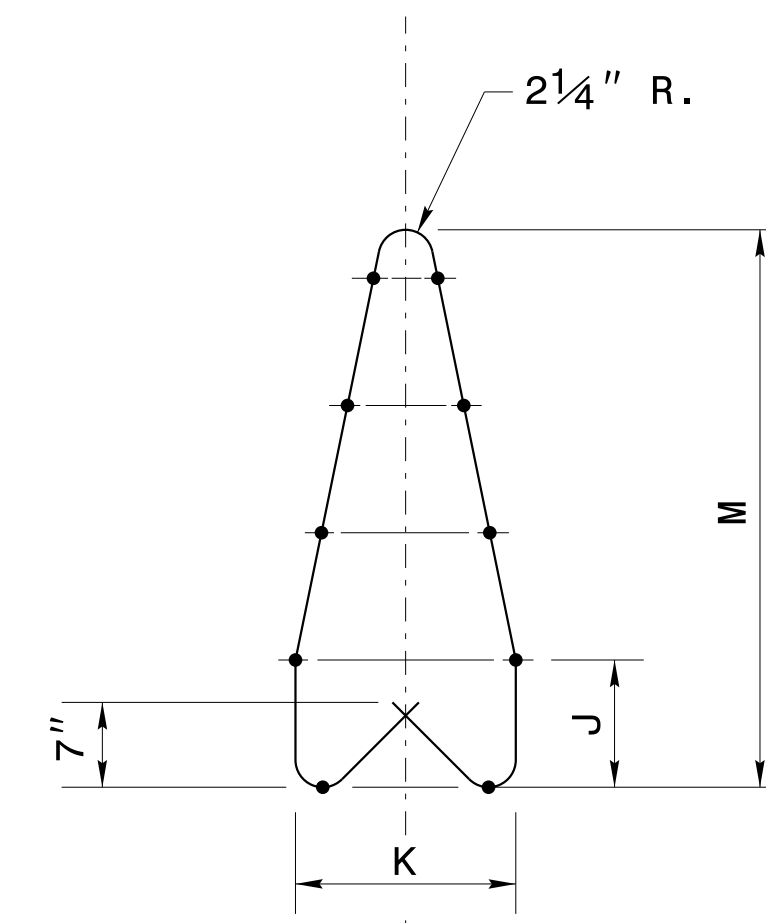
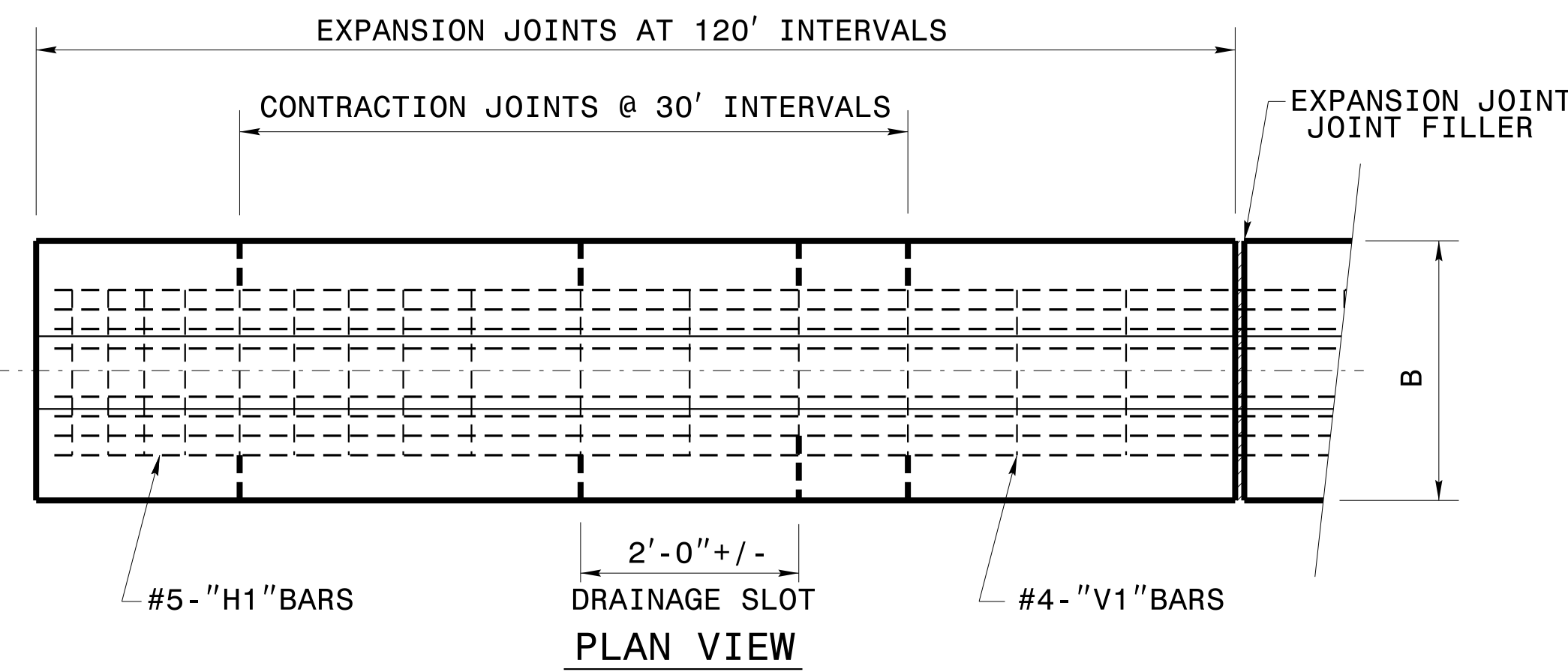


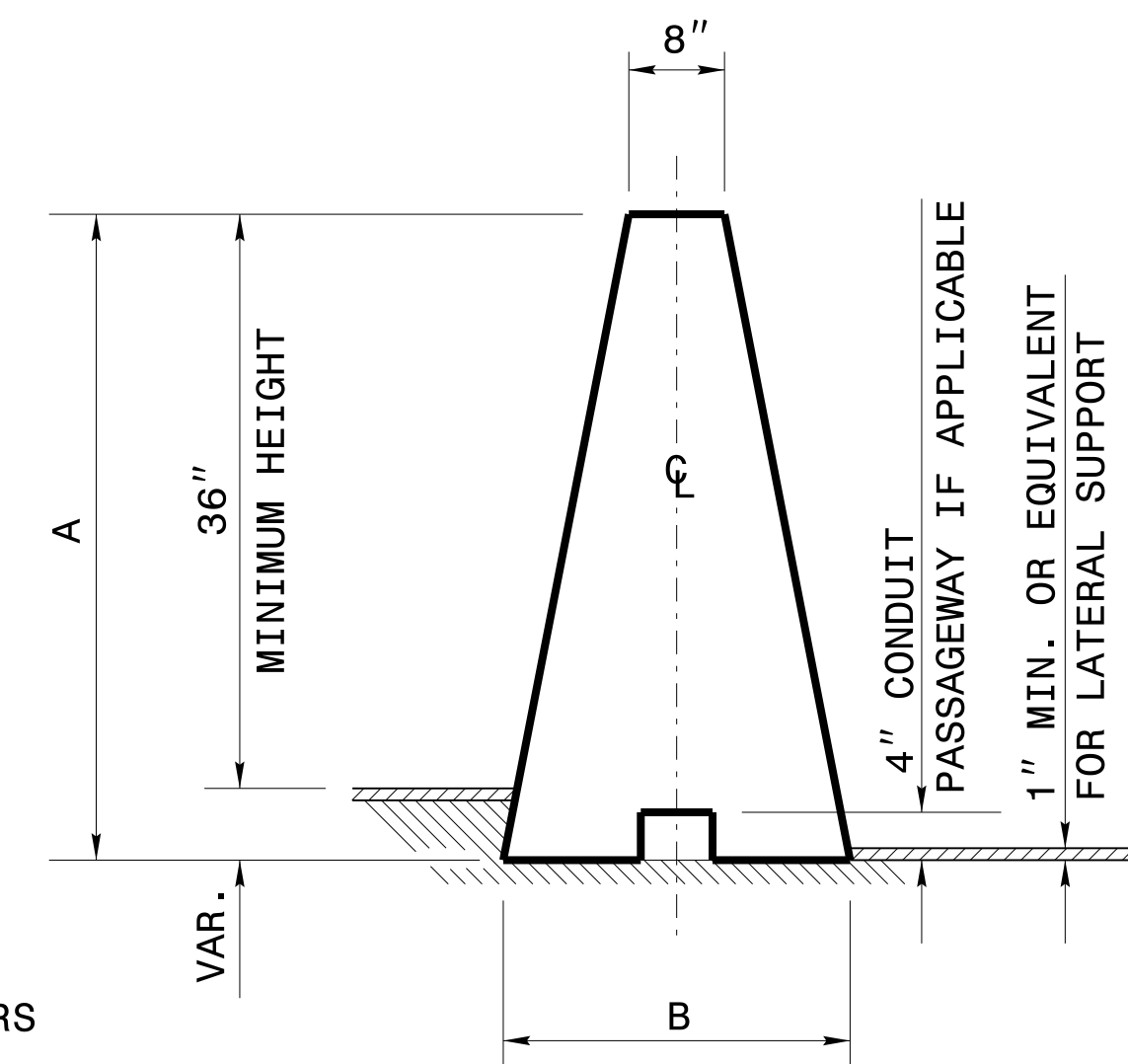
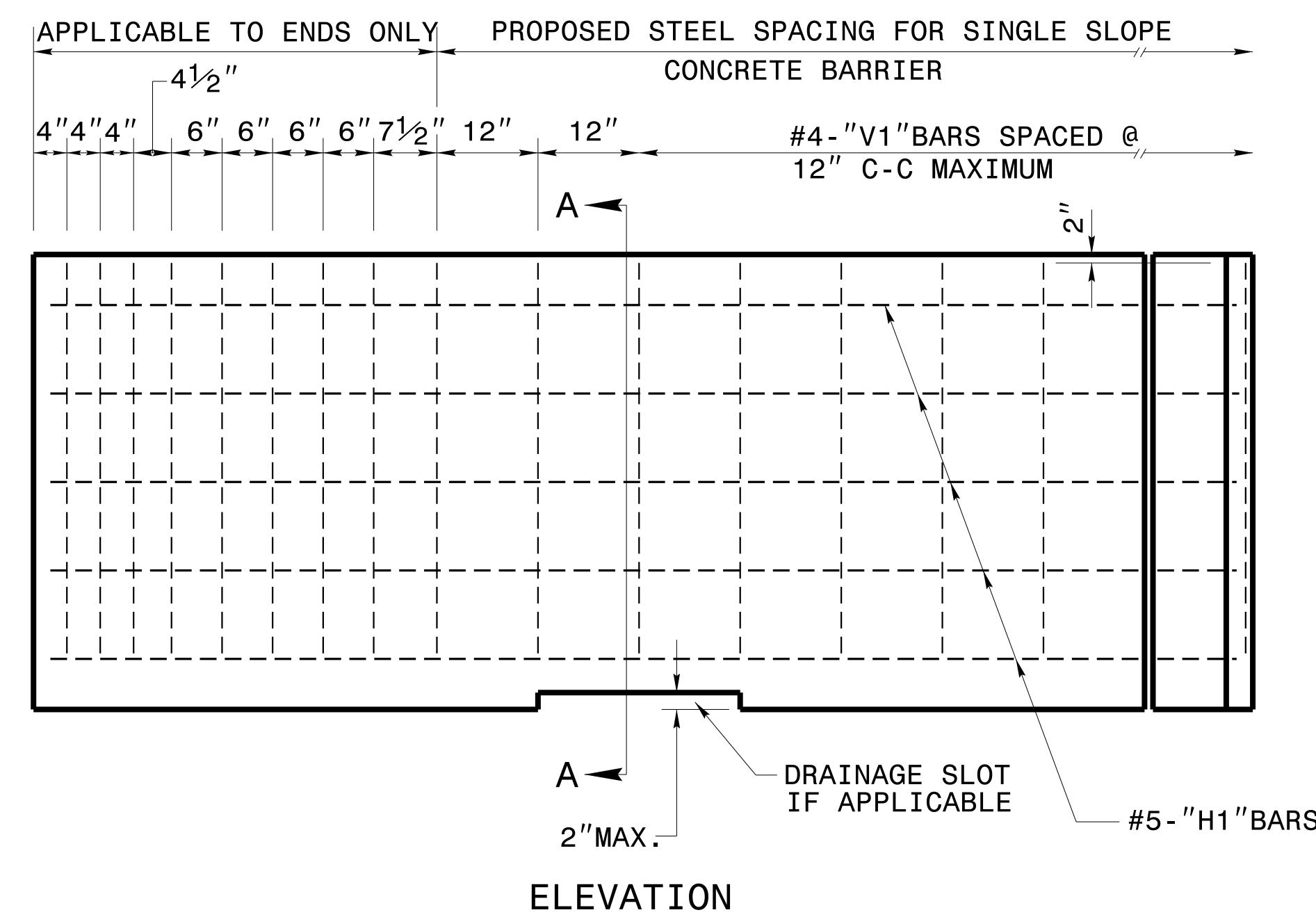
GENERAL NOTES:

- USE CLASS "AA" CONCRETE.
- MAINTAIN 2" OF COVER OVER ALL REBAR. CHAMFER TOP AND ENDS OF BARRIER 1/2 INCH.
- USE BAR SPLICE LENGTHS A MINIMUM OF 20 TIMES THE NORMAL DIAMETER OF THE BAR. ANY METHOD DEvised BY THE CONTRACTOR AND APPROVED BY THE ENGINEER THAT WILL ASSURE THE LONGITUDINAL ROADWAY STEEL WILL BE POSITIONED +/- 1/2 INCH AS DIMENSIONED WILL BE SATISFACTORY.

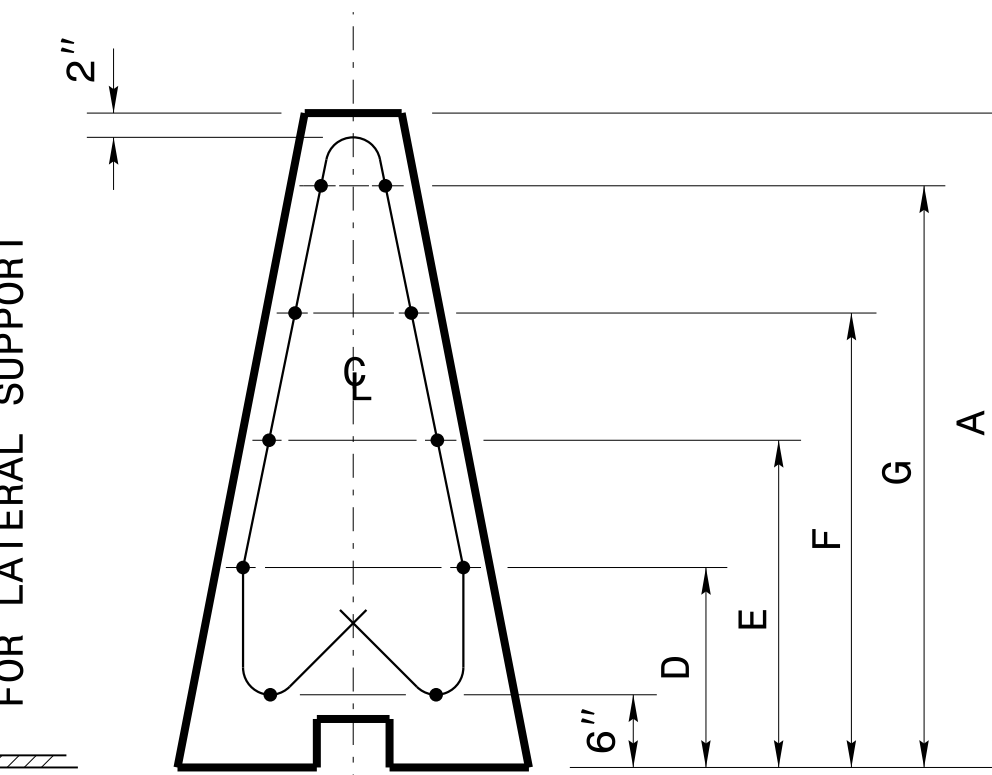
WELDED WIRE FABRIC MAY BE USED AS AN OPTION TO CONVENTIONAL REINFORCEMENT FOR CAST-IN-PLACE BARRIER. WELDED WIRE FABRIC SHALL BE MADE IN ACCORDANCE WITH ASTM A497. CONDUIT TO BE PROVIDED ONLY WHEN CALLED FOR ELSEWHERE IN THE PLANS. POSITION OF THE CONDUIT CONDUIT PASSAGEWAY MAY BE ADJUSTED TO FACILITATE CONSTRUCTION, SUBJECT TO APPROVAL BY THE ENGINEER.
- REFER TO ROADWAY STANDARD DRAWING NO.854.01 FOR EXPANSION AND CONTRACTION JOINT, FILLER AND OTHER SPECIFICATIONS.



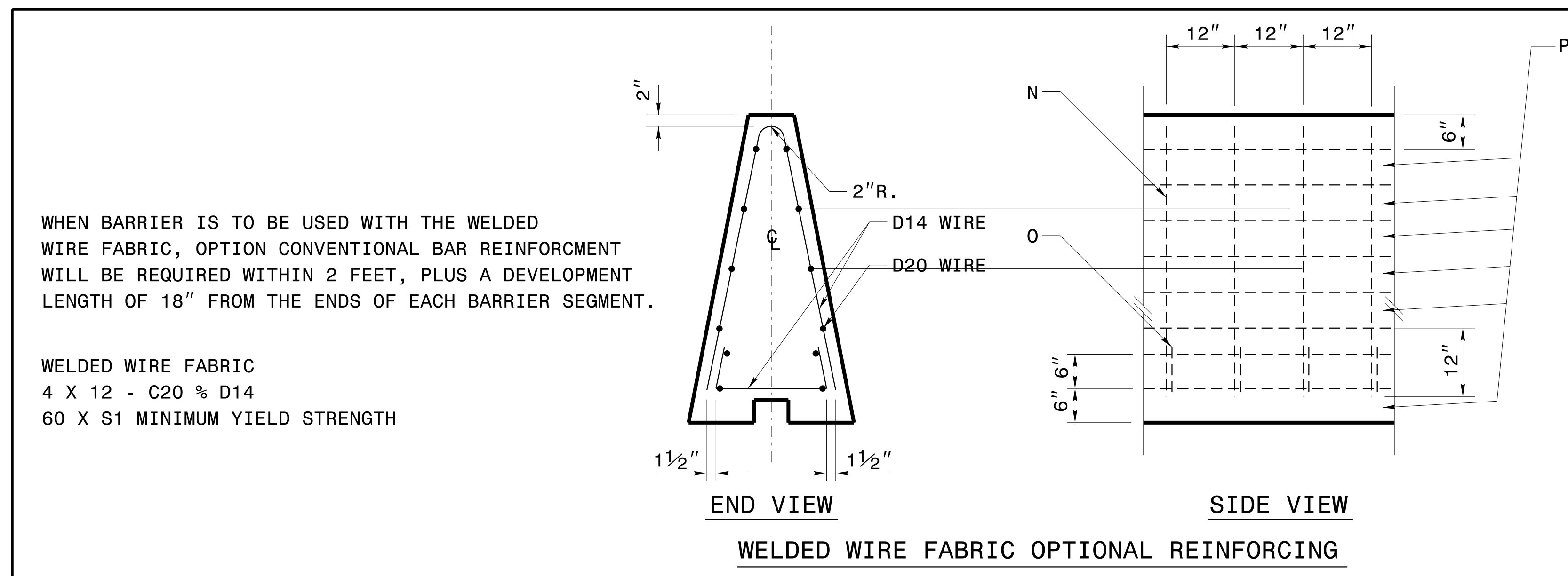
#4-'V1' BAR REINFORCING DETAIL



TYPICAL SECTION



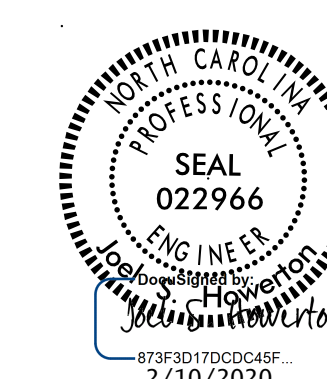
SECTION A-A



WHEN BARRIER IS TO BE USED WITH THE WELDED WIRE FABRIC, OPTION CONVENTIONAL BAR REINFORCEMENT WILL BE REQUIRED WITHIN 2 FEET, PLUS A DEVELOPMENT LENGTH OF 18" FROM THE ENDS OF EACH BARRIER SEGMENT.

WELDED WIRE FABRIC
4 X 12 - C20 % D14
60 X S1 MINIMUM YIELD STRENGTH

BARRIER HEIGHT (IN.)	DIMENSIONS											
	A	B	D	E	F	G	K	L	M	N	O	P
42"	42	24	13 1/2	21	28 1/2	36	15	9 1/4	36	72	28	4
48"	48	26 9/32	15	24	33	42	17 1/2	10 3/4	42	84	31 1/2	5
52"	54	28 9/16	16 1/2	27	37 1/2	48	19 1/2	12 1/4	48	96	34 3/4	6



DOCUMENT NOT CONSIDERED FINAL UNLESS ALL SIGNATURES COMPLETED

CONTRACT SERVICES & DEVELOPMENT UNIT
STANDARDS AND SPECIAL DESIGN
Office 919-707-6950 FAX 919-250-4119

SINGLE SLOPE CONCRETE BARRIER

ORIGINAL BY: _____ DATE: _____
 MODIFIED BY: rnbritt DATE: 08-18-06
 CHECKED BY: _____ DATE: _____
 FILE SPEC.: details/rnbritt/english/guardrail/single slope concrete barrier.dgn