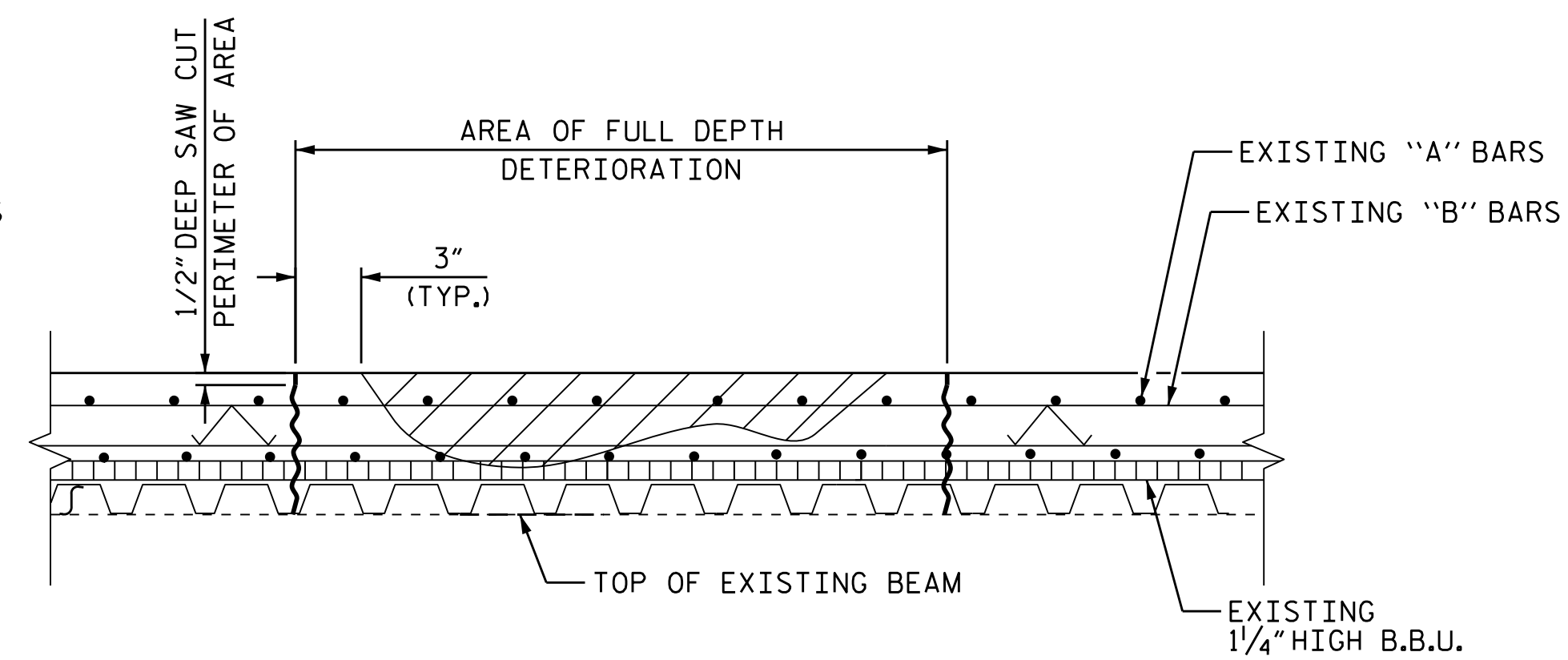
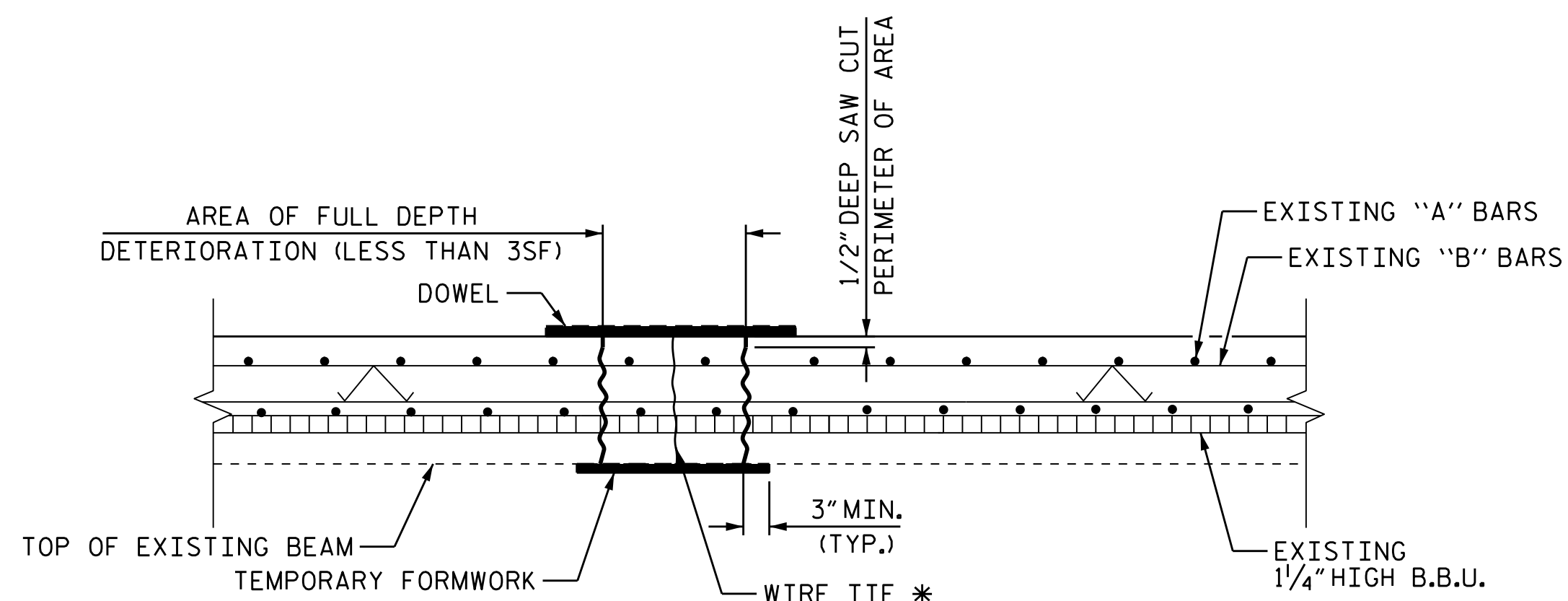


**CLASS II (PARTIAL DEPTH) REPAIR**



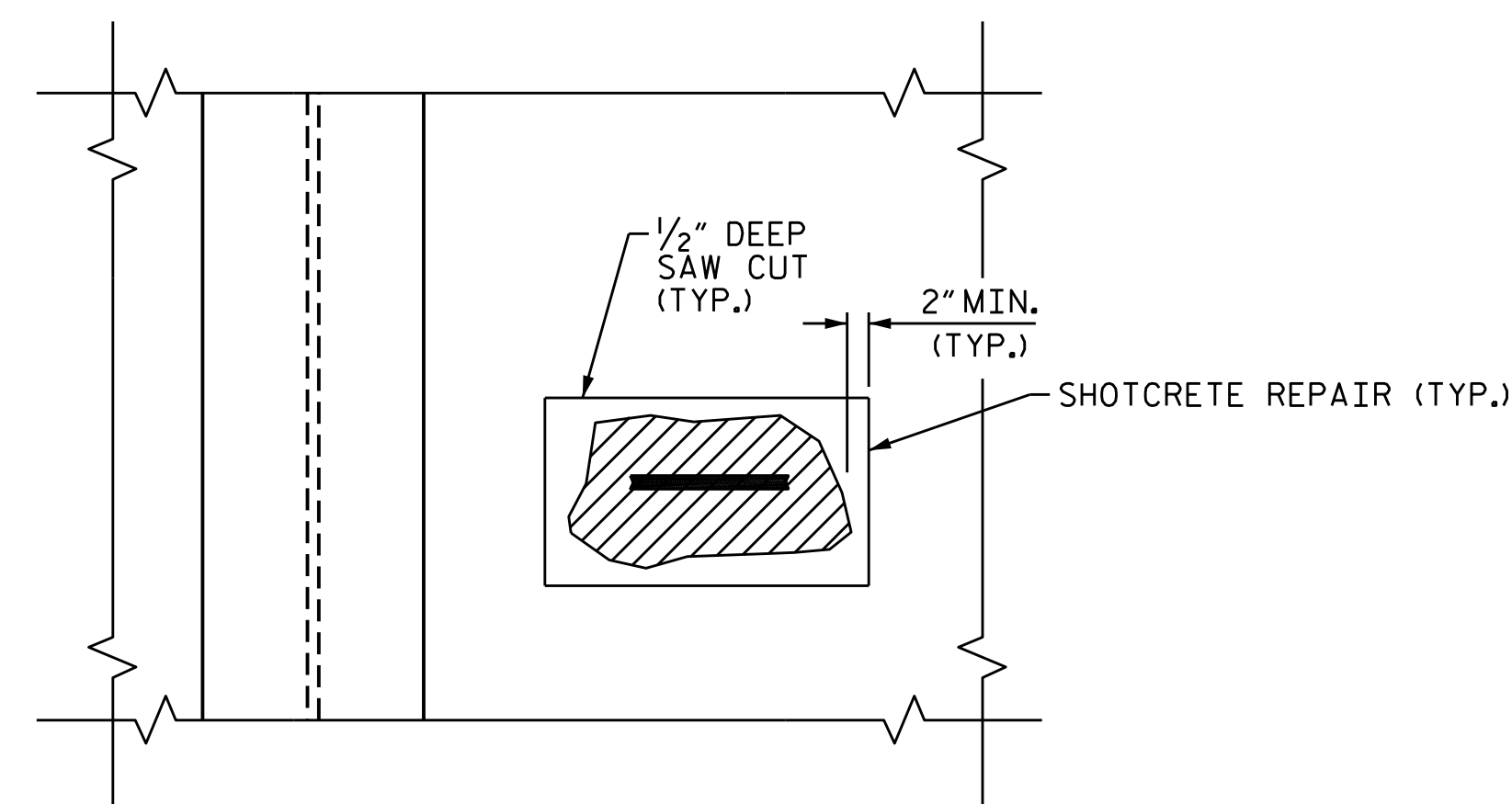
**CLASS III (FULL DEPTH) REPAIR**



**FULL DEPTH REPAIR WITH TEMPORARY FORMWORK**

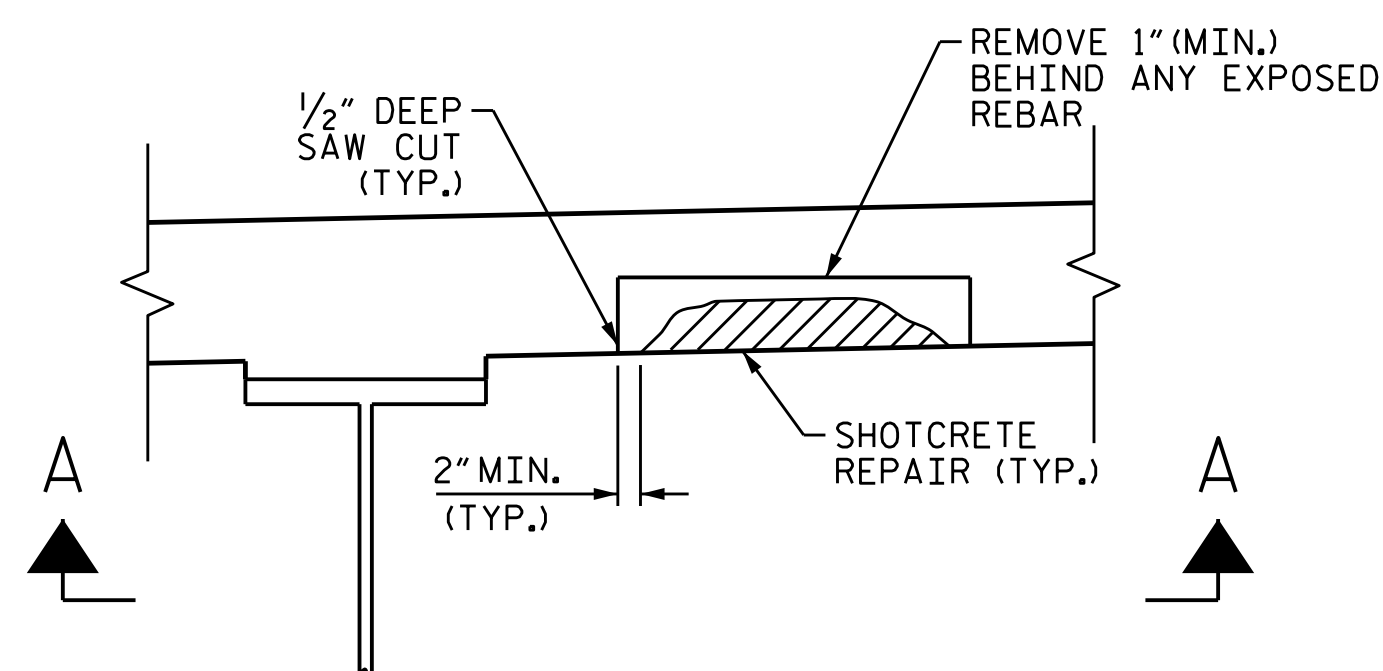
(FOR AREAS OF DETERIORATION EQUAL TO OR LESS THAN 3SF)

\* WIRE TIE TO BE KNOTTED BELOW TEMPORARY FORMWORK AND ATTACHED TO DOWEL THAT IS WIDER THAN FORMED FULL DEPTH HOLE. ROTATE DOWEL TO TIGHTEN FORMWORK AGAINST BOTTOM OF DECK.



**SECTION A-A**

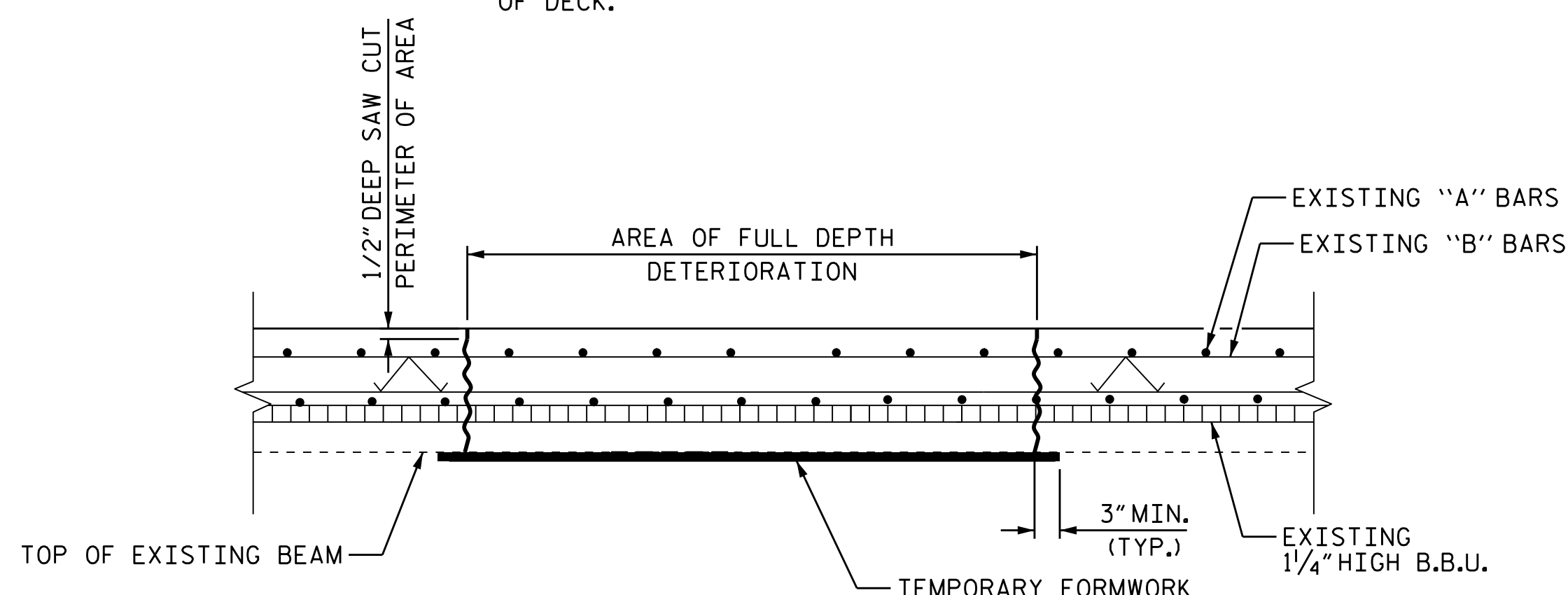
 AREA OF DETERIORATION



**TYPICAL SECTION**

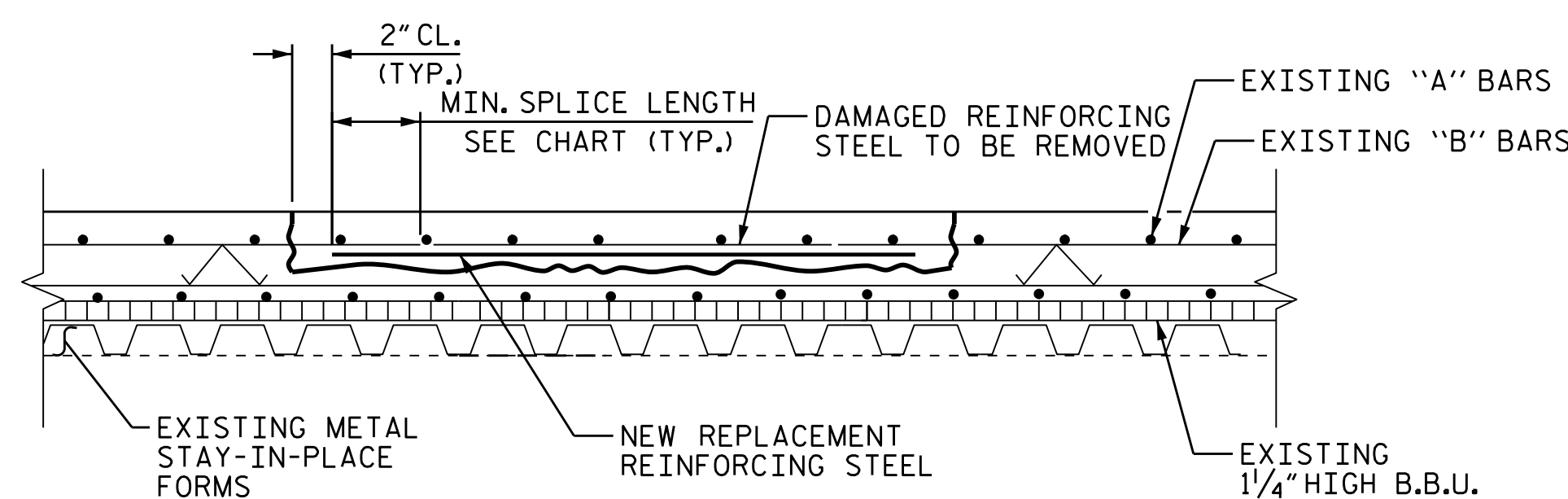
**UNDERSIDE OF DECK REPAIR**

BAR SIZE	REINFORCING STEEL LENGTHS ARE BASED ON THE FOLLOWING MINIMUM SPLICE LENGTHS				
	EXCEPT APPROACH SLABS, PARAPET AND BARRIER RAIL		APPROACH SLABS		PARAPET AND BARRIER RAIL
	EPOXY COATED	UNCOATED	EPOXY COATED	UNCOATED	
#4	2'-0"	1'-9"	2'-0"	1'-9"	2'-9"
#5	2'-6"	2'-2"	2'-6"	2'-2"	3'-5"
#6	3'-0"	2'-7"	3'-10"	2'-7"	4'-4"
#7	5'-3"	3'-6"			
#8	6'-10"	4'-7"			



**FULL DEPTH REPAIR WITH TEMPORARY FORMWORK**

(FOR AREAS OF DETERIORATION GREATER THAN 3SF)

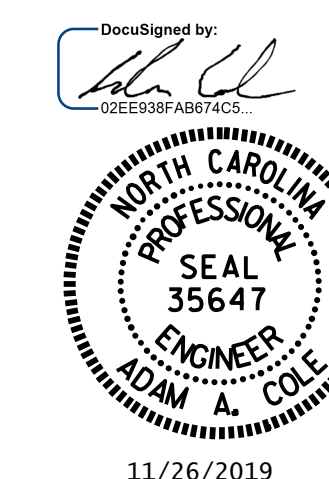


**REINFORCING STEEL REPAIR**

**NOTES**

- FOR AREAS TO BE REPAIRED, SEE "PLAN OF SPAN" SHEETS.
- ALL DECK REPAIRS SHALL BE COMPLETED PRIOR TO PLACEMENT OF OVERLAY.
- FOR CLASS II AND CLASS III SURFACE PREPARATION, SEE "OVERLAY SURFACE PREPARATION" SPECIAL PROVISION.
- FOR CONCRETE FOR DECK REPAIR FOR POLYESTER POLYMER CONCRETE OVERLAY, SEE SPECIAL PROVISIONS.
- FOR SHOTCRETE REPAIR, SEE SPECIAL PROVISIONS.
- THE CONTRACTOR SHALL SUBMIT WORKING DRAWINGS TO THE ENGINEER FOR APPROVAL PRIOR TO STARTING WORK FOR TEMPORARY FORMWORK. FOR SUBMITTALS OF WORKING DRAWINGS, SEE SPECIAL PROVISIONS.
- UPON REMOVAL OF TEMPORARY FORMWORK, ALL VOIDS AND HONEYCOMBS ON THE UNDERSIDE OF DECK SURFACE SHALL BE FILLED WITH THE SAME MATERIAL AS USED FOR THE PATCH, AND FINISHED TO CONFORM TO THE SURROUNDING CONCRETE SURFACE.
- NO FORMWORK SHALL BE LEFT IN PLACE.
- REINFORCING STEEL WHICH IS DETERMINED BY THE ENGINEER TO BE REPLACED, SHALL BE REMOVED TO A POINT WHERE IT IS SOUND. THE PATCH SHALL EXTEND A SUFFICIENT DISTANCE BEYOND THIS POINT TO DEVELOP A SPLICE LENGTH SPECIFIED IN THE TABLE ON THIS SHEET.

PROJECT NO. I-5769  
MECKLENBURG COUNTY  
 BRIDGE NO. 590221, 590222,  
590227, 590230, 590231, 590241, 590243



STATE OF NORTH CAROLINA  
 DEPARTMENT OF TRANSPORTATION  
 RALEIGH  
 STANDARD  
**DECK REPAIR DETAILS**

ASSEMBLED BY : R. SAHA DATE : 8/2019  
 CHECKED BY : H.A. LOCKLEAR DATE : 9/2019  
 DRAWN BY : NAP 9/18  
 CHECKED BY :

NO.	REVISIONS						SHEET NO. SD-03
	BY:	DATE:	NO.	BY:	DATE:	TOTAL SHEETS	
1			3			3	
2			4				

DOCUMENT NOT CONSIDERED FINAL UNLESS ALL SIGNATURES COMPLETED