

NOTES

THE CONTRACTOR SHALL FIELD VERIFY THE EXISTING SLOPE AREAS AND SUBMIT TO THE ENGINEER FOR APPROVAL WORKING DRAWINGS WITH EXACT DIMENSIONS AND QUANTITIES OF GABION MATTRESSES AND RIP RAP PRIOR TO PURCHASING MATERIALS.

PRIOR TO PLACING GEOTEXTILE FOR DRAINAGE, GABION MATTRESSES, RIP RAP, AND #57 STONE, ALL WORK TO END BENT PILES MUST BE COMPLETED AND APPROVED BY THE ENGINEER.

ALL VOIDED AREAS UNDER THE END BENT CAPS SHALL BE FILLED AND COMPACTED WITH #57 STONE.

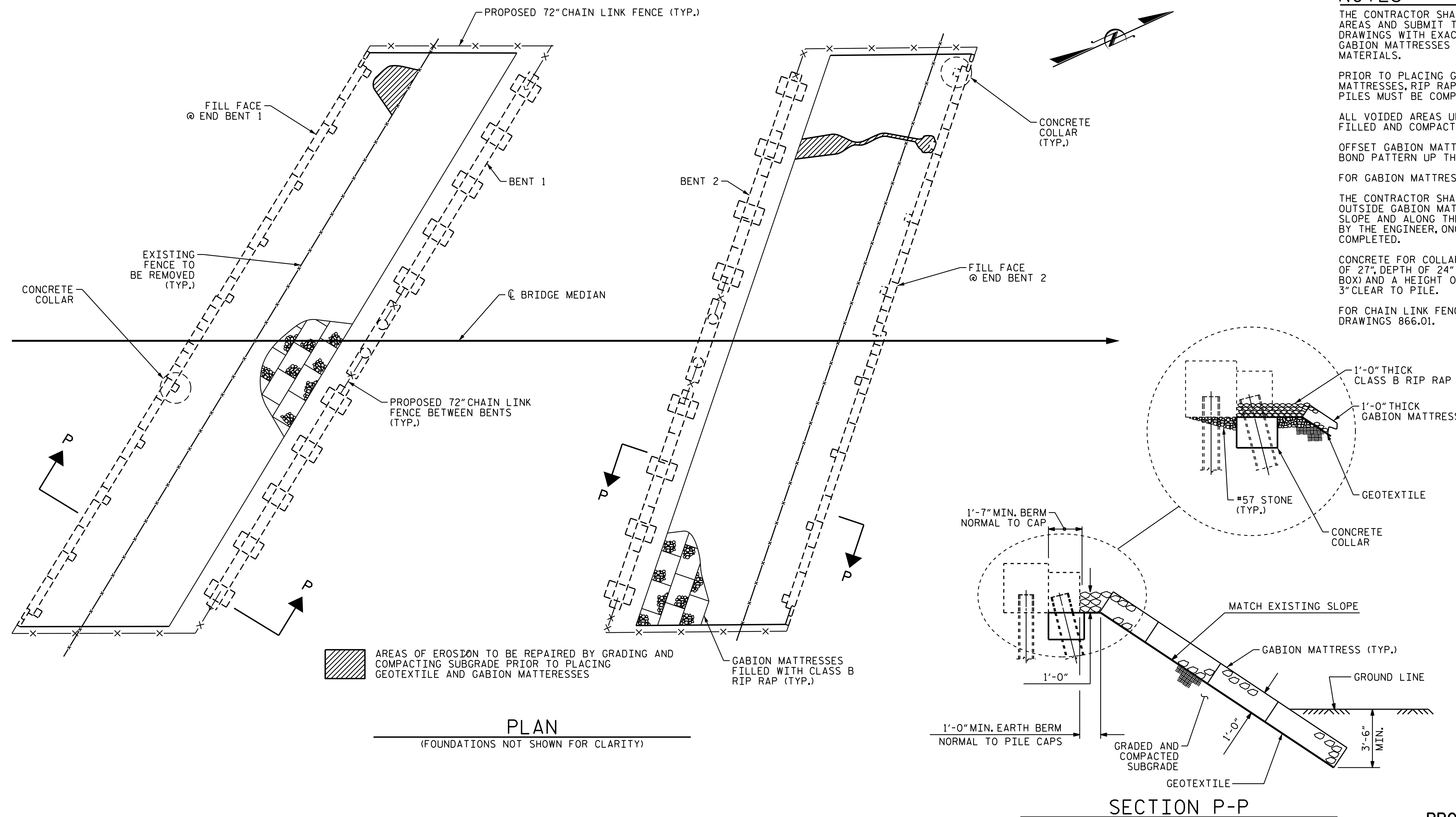
OFFSET GABION MATTRESSES EACH ROW CREATING A RUNNING BOND PATTERN UP THE SLOPE.

FOR GABION MATTRESSES, SEE SPECIAL PROVISIONS.

THE CONTRACTOR SHALL INSTALL PROPOSED FENCING 2FT MIN. OUTSIDE GABION MATTRESS SLOPE PROTECTION GOING UP THE SLOPE AND ALONG THE CENTER OF THE BENTS, OR AS DIRECTED BY THE ENGINEER, ONCE THE SLOPE PROTECTION IS COMPLETED.

CONCRETE FOR COLLARS WAS CALCULATED USING BOX WIDTH OF 27", DEPTH OF 24" (ASSUMED 3" IN FRONT OF BRACE PILE BOX) AND A HEIGHT OF 18". WITH FORM WORK A MINIMUM OF 3" CLEAR TO PILE.

FOR CHAIN LINK FENCE, 72" DETAILS, SEE ROADWAY STANDARD DRAWINGS 866.01.



AREAS OF EROSION TO BE REPAIRED BY GRADING AND COMPACTING SUBGRADE PRIOR TO PLACING GEOTEXTILE AND GABION MATTRESSES

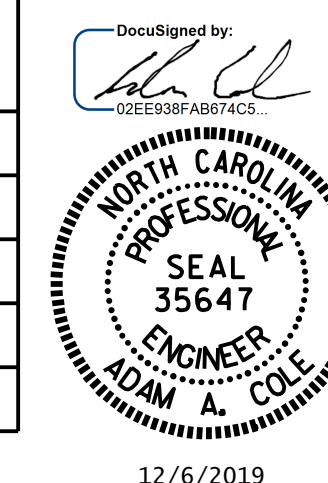
PLAN
(FOUNDATIONS NOT SHOWN FOR CLARITY)

SECTION P-P

PROJECT NO. I-5769
MECKLENBURG COUNTY
 BRIDGE NO. 590227

AS-BUILT REPAIR QUANTITIES TABLE

BRIDGE No. 590227	#57 STONE		CHAIN LINK FENCE, 72" FABRIC		METAL LINE POSTS FOR 72" CHAIN LINK FENCE		METAL TERMINAL POSTS FOR 72" CHAIN LINK FENCE		RIP RAP CLASS B (1'-0" THICK)		GEOTEXTILE FOR DRAINAGE		GABION MATTRESSES (1'-0" THICK)		CLASS A CONCRETE	
	ESTIMATED	ACTUAL	ESTIMATED	ACTUAL	ESTIMATED	ACTUAL	ESTIMATED	ACTUAL	ESTIMATED	ACTUAL	ESTIMATED	ACTUAL	ESTIMATED	ACTUAL	ESTIMATED	ACTUAL
	TON	TON	LIN. FT.	LIN. FT.	EACH	EACH	EACH	EACH	TON	TON	SQUARE YARDS	SQUARE YARDS	SO. YDS.	SO. YDS.	CU. FT.	CU. FT.
END BENT 1	38		155		14		12		848		1,766		1,766			6.8
END BENT 2	34		155		14		12		795		1,885		1,885			54.0
TOTAL	72		310		28		24		1,643		3,651		3,651			60.8



STATE OF NORTH CAROLINA
 DEPARTMENT OF TRANSPORTATION
 RALEIGH

SLOPE PROTECTION REPAIR DETAILS

DRAWN BY : N.A. PIERCE DATE : 08/2018
 CHECKED BY : D.A. CANTRELL DATE : 12/2018

DOCUMENT NOT CONSIDERED
 FINAL UNLESS ALL
 SIGNATURES COMPLETED

REVISIONS						SHEET NO.
NO.	BY:	DATE:	NO.	BY:	DATE:	S3-13
1			3			TOTAL SHEETS
2			4			13