

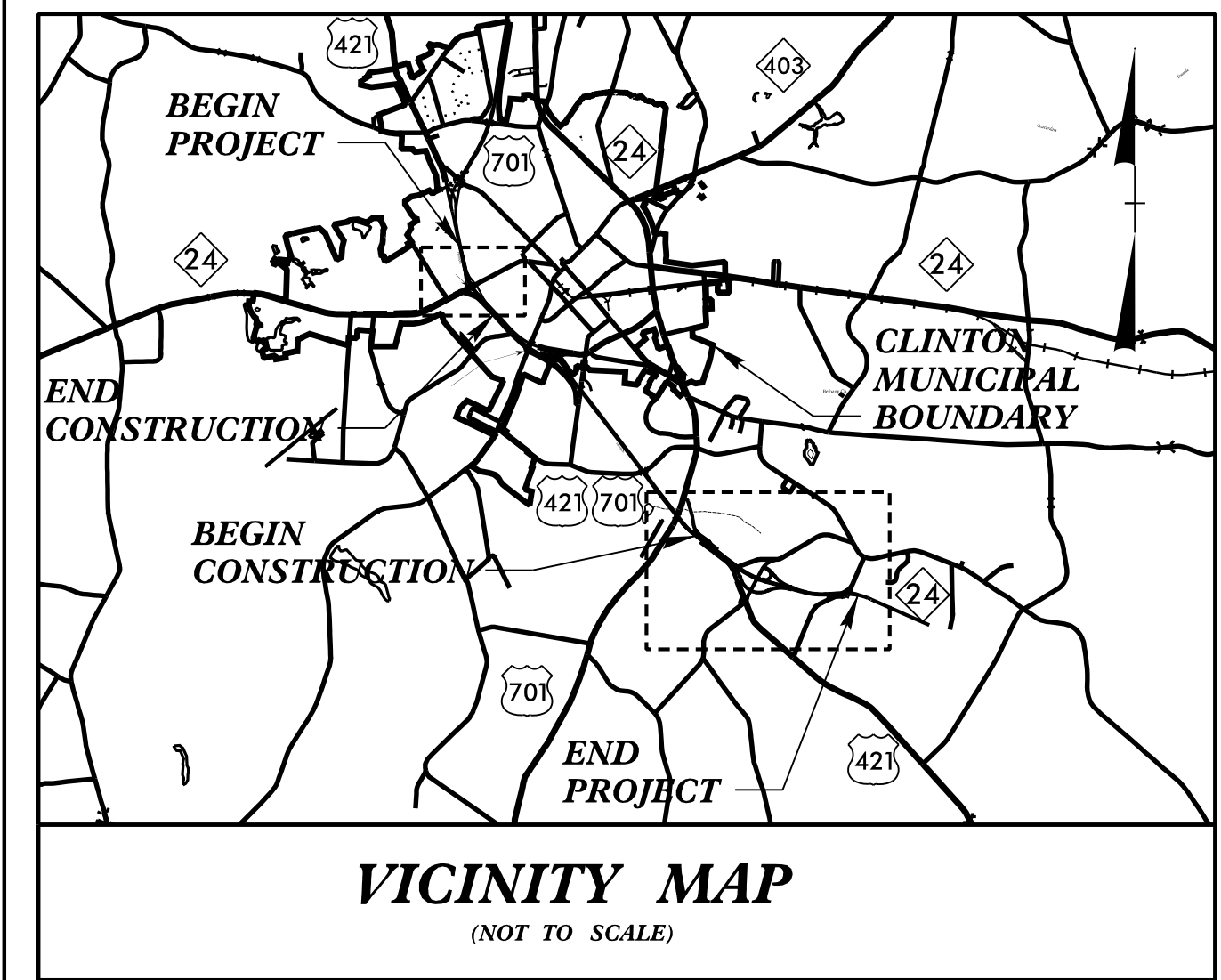
**This electronic collection of documents is provided
for the convenience of the user
and is Not a Certified Document –**

**The documents contained herein were originally issued
and sealed by the individuals whose names and license
numbers appear on each page, on the dates appearing
with their signature on that page.**

**This file or an individual page
shall not be considered a certified document.**

09/06/99

See Sheet 1A For Index of Sheets
See Sheet 1B For Conventional Symbols



STATE OF NORTH CAROLINA
DIVISION OF HIGHWAYS

**UTILITIES BY OTHERS PLANS
SAMPSON COUNTY**

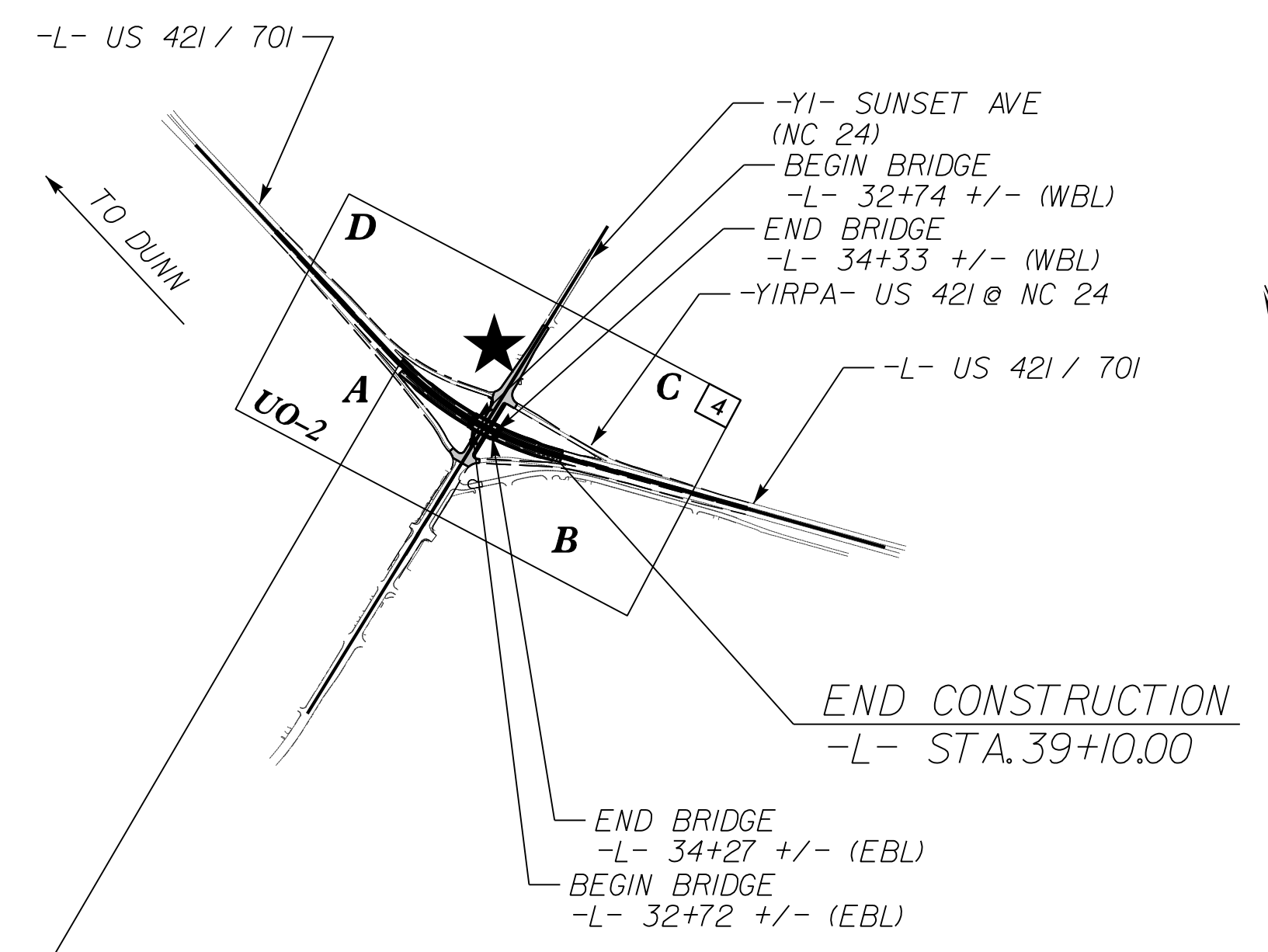
T.I.P. NO.	SHEET NO.
R-2303E	UO-1

NOTE:
ALL UTILITY WORK SHOWN ON THIS SHEET IS DONE BY OTHERS.
NO PAYMENT WILL BE MADE TO THE CONTRACTOR FOR UTILITY WORK SHOWN ON THIS SHEET.

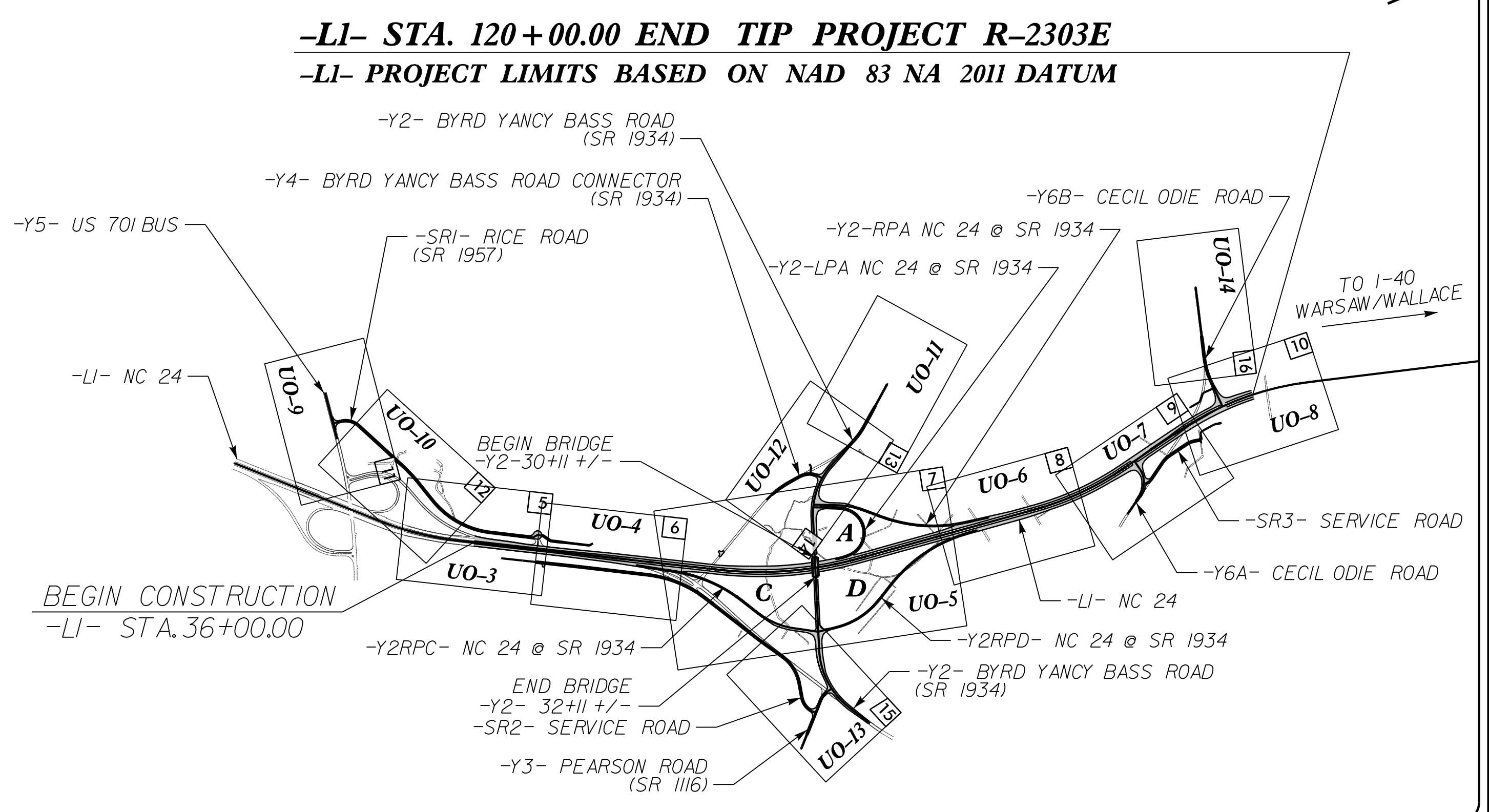
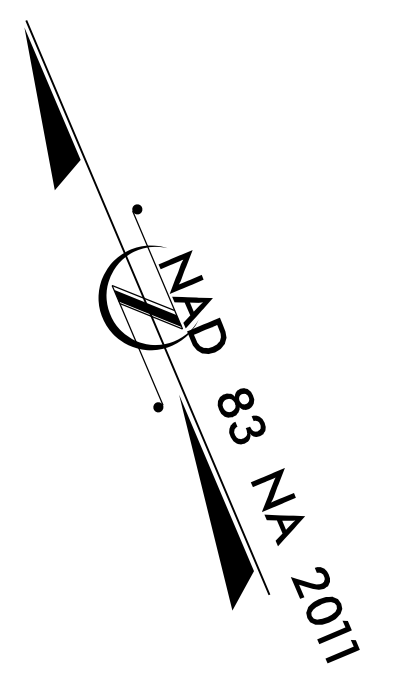
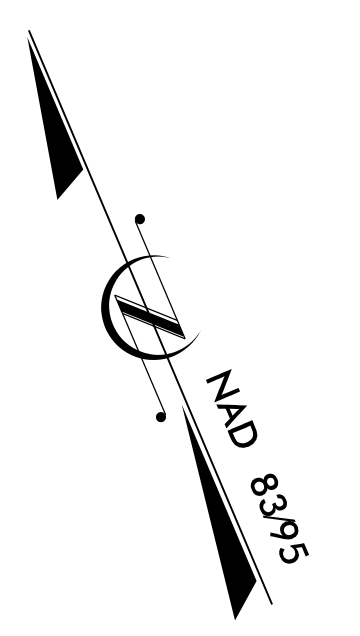
**LOCATION: NC 24 AT SR 1296 (SUNSET AVE) AND
NC 24 FROM US 701 (SOUTHEAST BLVD.) TO
EAST OF SR 1935 (CECIL-ODIE RD)**

**TYPE OF WORK: O/H POWER, O/H FIBER RELOCATION
AND U/G FIBER RELOCATION**

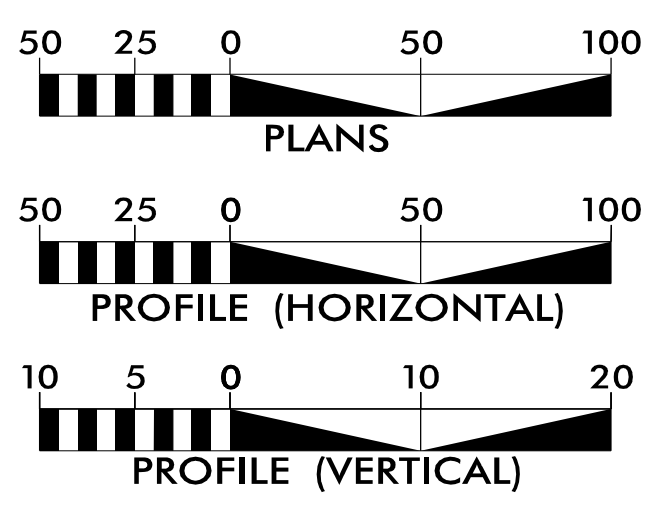
TIP PROJECT: R-2303E



-L- STA. 26+25.00 BEGIN TIP PROJECT R-2303E
-L- PROJECT LIMITS BASED ON NAD 83 /95 DATUM



GRAPHIC SCALES



INDEX OF SHEETS

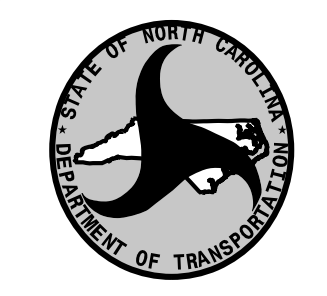
SHEET NO.:	DESCRIPTION:
UO-1	TITLE SHEET
UO-02 THRU UO-14	UBO PLAN SHEETS

UTILITY OWNERS WITH CONFLICTS

- (A) POWER DISTRIBUTION - DUKE ENERGY
- (B) TELEPHONE - CENTURY LINK
- (C) TELEPHONE - STAR COMMUNICATIONS

PREPARED IN THE OFFICE OF:

moftatt & nichol
4700 FALLS OF NEUSE ROAD, SUITE 300
RALEIGH, NORTH CAROLINA 27609
(919) 781-4626 VOICE (919) 781-4869 FAX
NC License NO.: F-0105



**DIVISION OF HIGHWAYS
DIVISION 3**
5501 BARBADOS BLVD
CASTLE HAYNE, NC 28429
PHONE (910) 341-2000
FAX (910) 675-0143

SAMUEL HAYES	CONSULTANT CONTACT #1
TRENT HUFFMAN	CONSULTANT CONTACT #2
TIM REID	CONSULTANT CONTACT #3

NABIL HAMDAN	REGIONAL UTILITY ENGINEER
LONNEY SLEEPER	DIVISION UTILITY ENGINEER
KYLE PLEASANT	REGIONAL UTILITY COORDINATOR
STEVE DAVIS	DIVISION UTILITY COORDINATOR

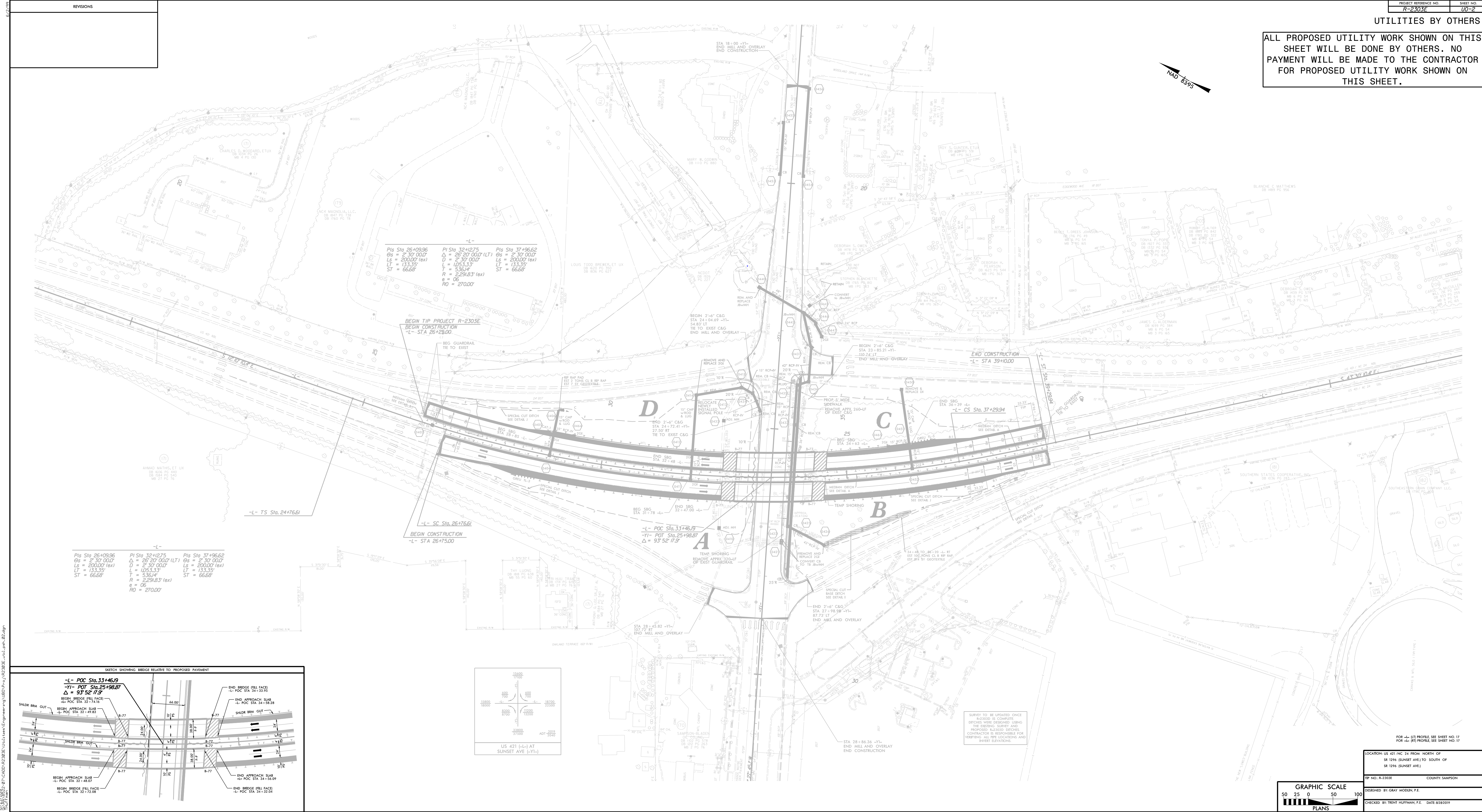
10/23/2019
C:\RA\8522-07\CADD\VR2303E\Utilities\Engineering\UBO\Proj\VR2303E_util_tsh.dgn
THuFFmon

REVISIONS

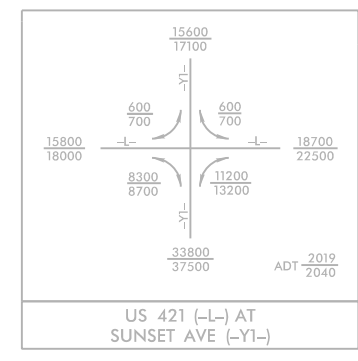
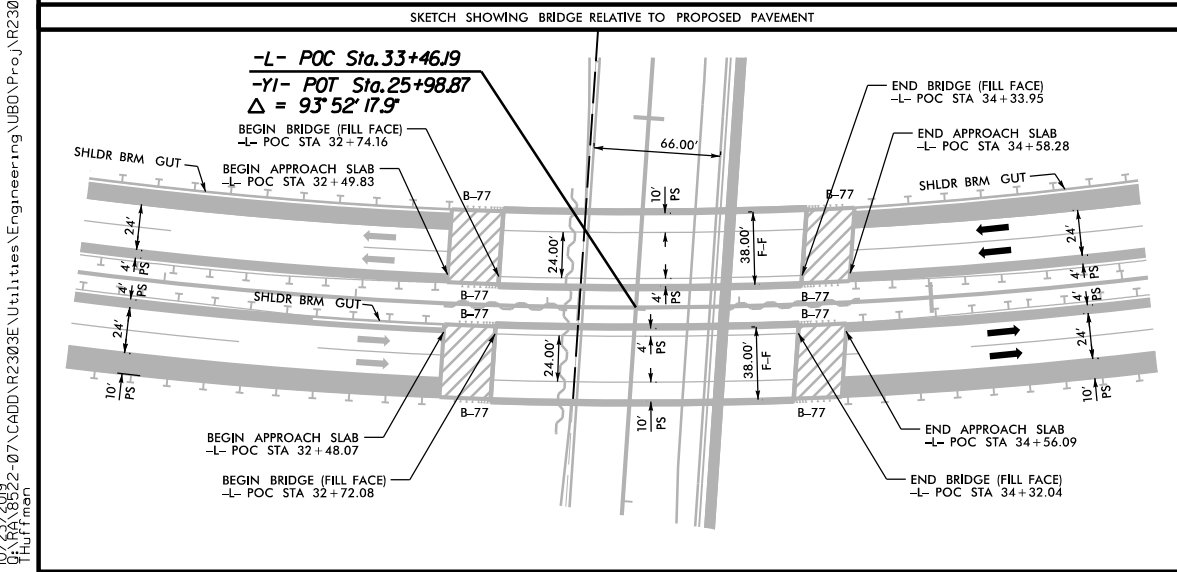
PROJECT REFERENCE NO. **R-2303E** SHEET NO. **100-2**

UTILITIES BY OTHERS

ALL PROPOSED UTILITY WORK SHOWN ON THIS SHEET WILL BE DONE BY OTHERS. NO PAYMENT WILL BE MADE TO THE CONTRACTOR FOR PROPOSED UTILITY WORK SHOWN ON THIS SHEET.



-L-
 Pts Sta 26+09.96 Δs = 2° 30' 00.0" D = 200.00' (ex) Ls = 133.35' T = 53.54' R = 05' RO = 270.00'
 Pts Sta 32+12.75 Δs = 26° 20' 00.0" (LT) D = 2° 30' 00.0" Ls = 105.33' T = 53.54' R = 05' RO = 270.00'
 Pts Sta 37+96.62 Δs = 2° 30' 00.0" (LT) D = 2° 30' 00.0" Ls = 200.00' (ex) LT = 133.35' T = 53.54' ST = 66.68'



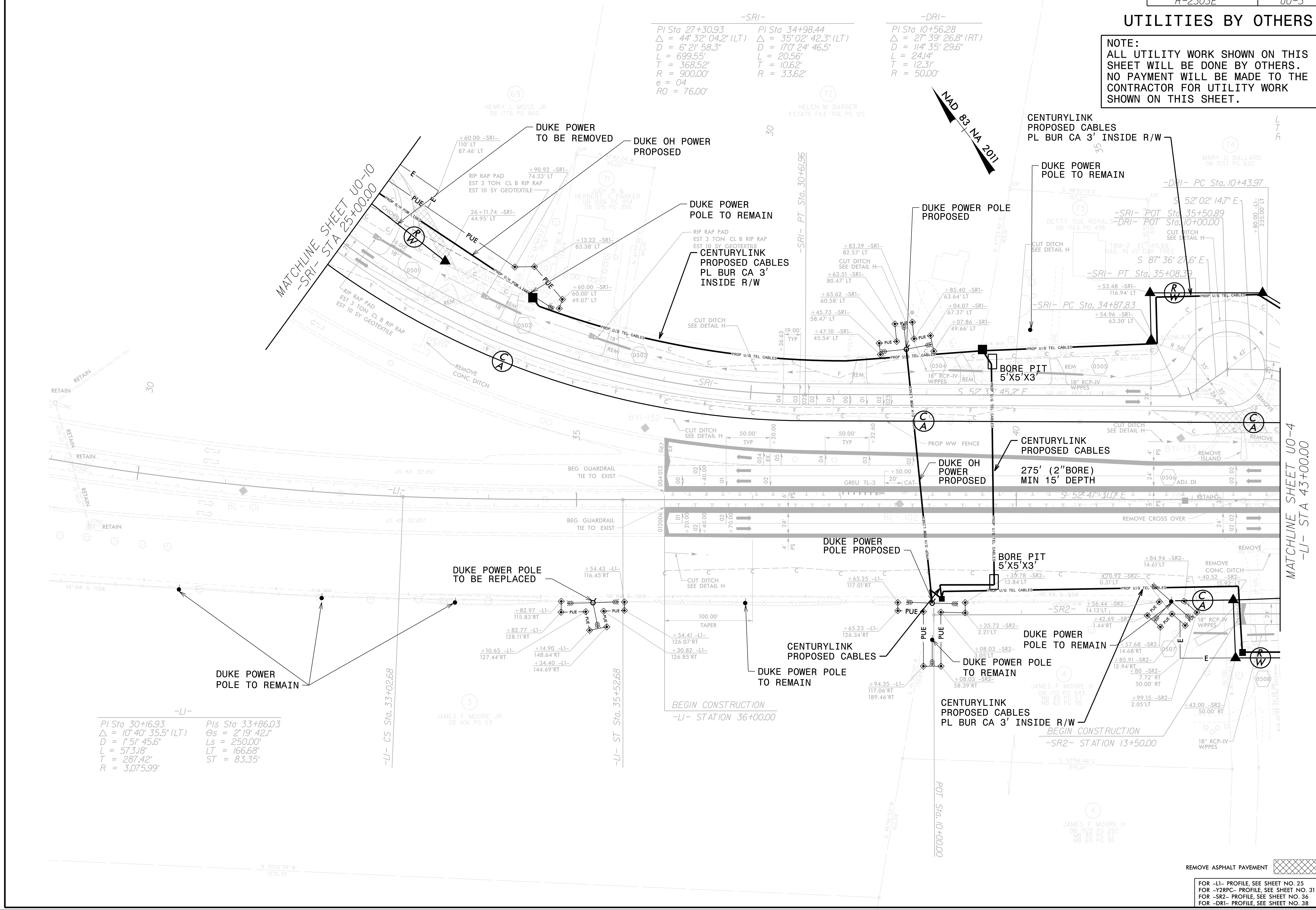
FOR -L- SEE PROFILE SHEET NO. 17
 FOR -YI- SEE PROFILE SHEET NO. 17
 LOCATION: US 421 INC 24 FROM NORTH OF
 SR 1296 (SUNSET AVE) TO SOUTH OF
 SR 1296 (SUNSET AVE)
 TR. NO. R-2303E COUNTY: SAMPSON
 DESIGNED BY: GRAY HODGEN, P.E.
 CHECKED BY: TRENT HOFFMAN, P.E. DATE: 02/08/09

GRAPHIC SCALE
 50 25 0 50 100
PLANS

UTILITIES BY OTHERS

NOTE:
ALL UTILITY WORK SHOWN ON THIS SHEET WILL BE DONE BY OTHERS. NO PAYMENT WILL BE MADE TO THE CONTRACTOR FOR UTILITY WORK SHOWN ON THIS SHEET.

-SRI-	-DRI-
PI Sta 27+30.93	PI Sta 10+56.28
$\Delta = 44^{\circ} 32' 04.2" (LT)$	$\Delta = 27^{\circ} 39' 26.8" (RT)$
$D = 6^{\circ} 21' 58.3"$	$D = 114^{\circ} 35' 29.6"$
$L = 699.55'$	$L = 24.14'$
$T = 368.52'$	$T = 12.31'$
$R = 900.00'$	$R = 50.00'$
$e = 04$	
$RO = 76.00'$	



-LI-	-SR2-
PI Sta 30+16.93	PI Sta 33+86.03
$\Delta = 10^{\circ} 40' 35.5" (LT)$	$\Delta = 2^{\circ} 19' 42.1"$
$D = 1^{\circ} 51' 45.6"$	$D = 250.00'$
$L = 573.18'$	$L = 166.68'$
$T = 287.42'$	$T = 83.35'$
$R = 3,075.99'$	

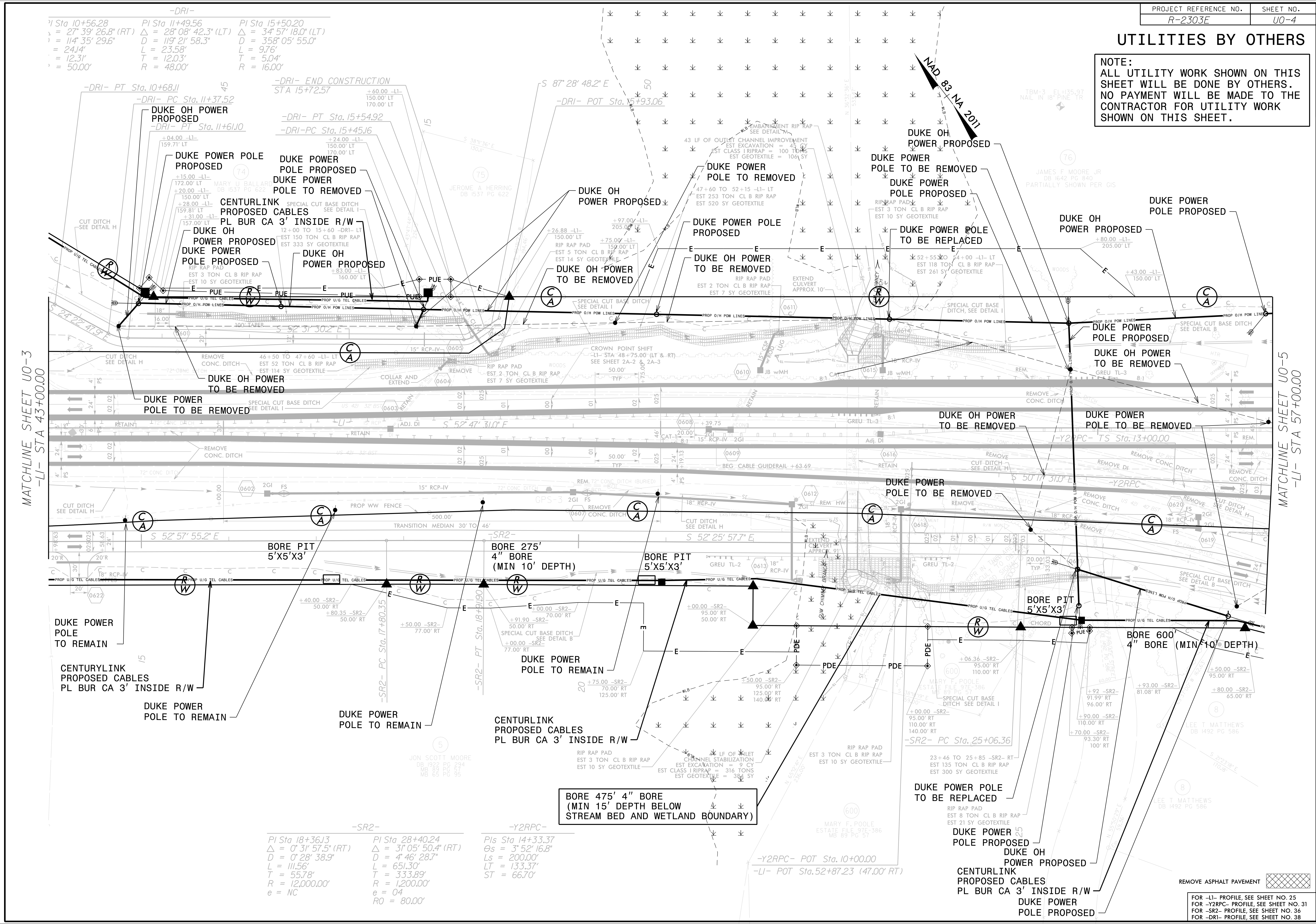


FOR -LI- PROFILE, SEE SHEET NO. 25
 FOR -Y2RPC- PROFILE, SEE SHEET NO. 31
 FOR -SR2- PROFILE, SEE SHEET NO. 36
 FOR -DRI- PROFILE, SEE SHEET NO. 38

10/23/2019
 C:\Utilities\Engineering\UBO\Proj\NR2303E\util_psh_03.dgn
 PH: rmon

UTILITIES BY OTHERS

NOTE:
 ALL UTILITY WORK SHOWN ON THIS SHEET WILL BE DONE BY OTHERS. NO PAYMENT WILL BE MADE TO THE CONTRACTOR FOR UTILITY WORK SHOWN ON THIS SHEET.



MATCHLINE SHEET U0-3
 -LI- STA 43+00.00

MATCHLINE SHEET U0-5
 -LI- STA 57+00.00

-DRI-
 PI Sta 10+56.28 Δ = 27° 39' 26.8" (RT) D = 114' 35" 29.6" L = 24.14' T = 12.31' R = 50.00'
 PI Sta 11+49.56 Δ = 28° 08' 42.3" (LT) D = 119' 21" 58.3" L = 23.58' T = 12.03' R = 48.00'
 PI Sta 15+50.20 Δ = 34° 57' 18.0" (LT) D = 358' 05" 55.0" L = 9.76' T = 5.04' R = 16.00'

-SR2-
 PI Sta 18+36.13 Δ = 0° 31' 57.5" (RT) D = 0' 28" 38.9" L = 111.56' T = 55.78' R = 12,000.00' e = NC
 PI Sta 28+40.24 Δ = 31° 05' 50.4" (RT) D = 4' 46" 28.7" L = 651.30' T = 333.89' R = 1,200.00' e = 04 RO = 80.00'

-Y2RPC-
 PIs Sta 14+33.37 Δs = 3° 52' 16.8" Ls = 200.00' Lt = 133.37' ST = 66.70'

**BORE 475' 4" BORE
 (MIN 15' DEPTH BELOW
 STREAM BED AND WETLAND BOUNDARY)**

REMOVE ASPHALT PAVEMENT

FOR -LI- PROFILE, SEE SHEET NO. 25
 FOR -Y2RPC- PROFILE, SEE SHEET NO. 31
 FOR -SR2- PROFILE, SEE SHEET NO. 36
 FOR -DRI- PROFILE, SEE SHEET NO. 38

REVISIONS

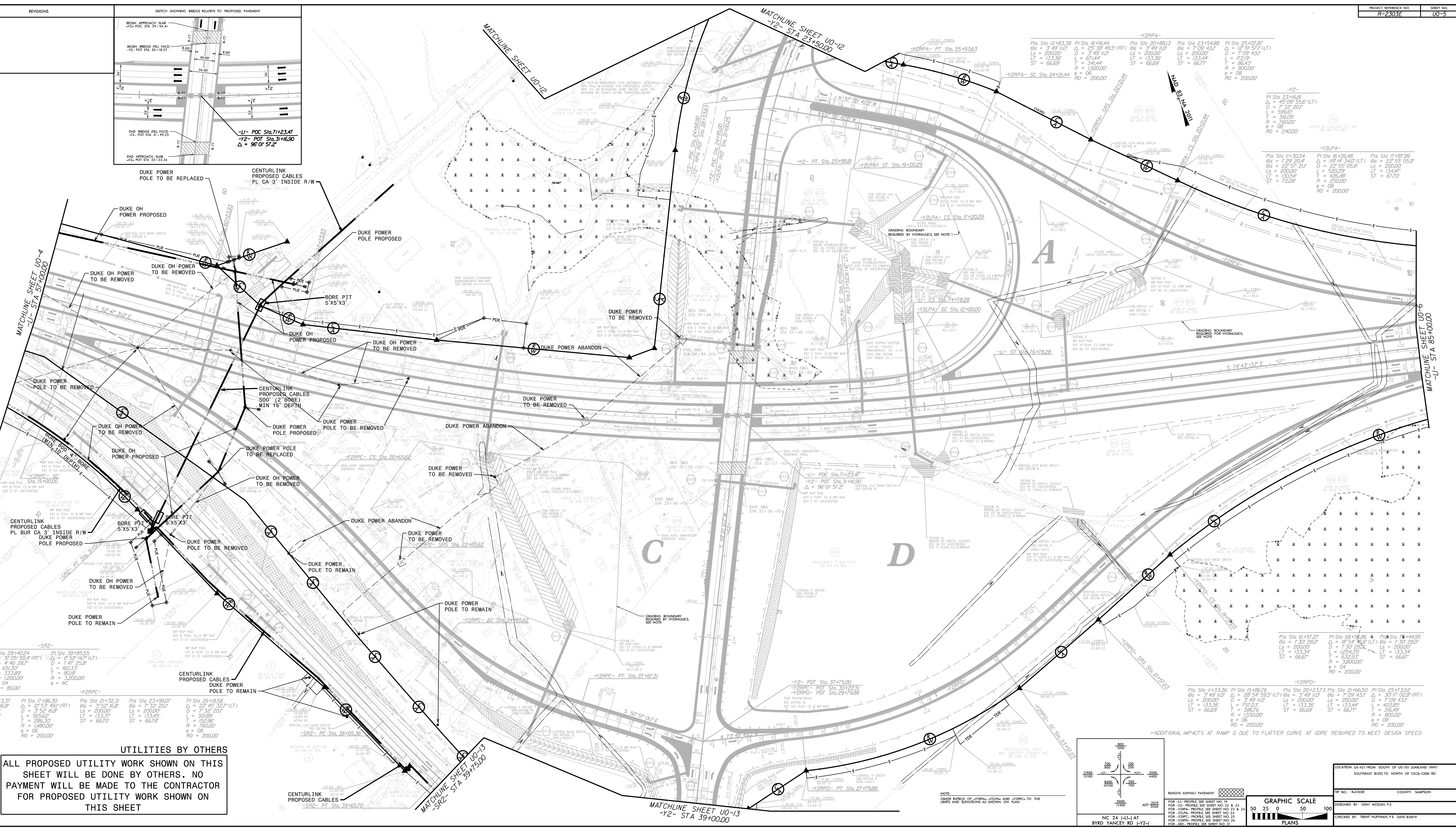
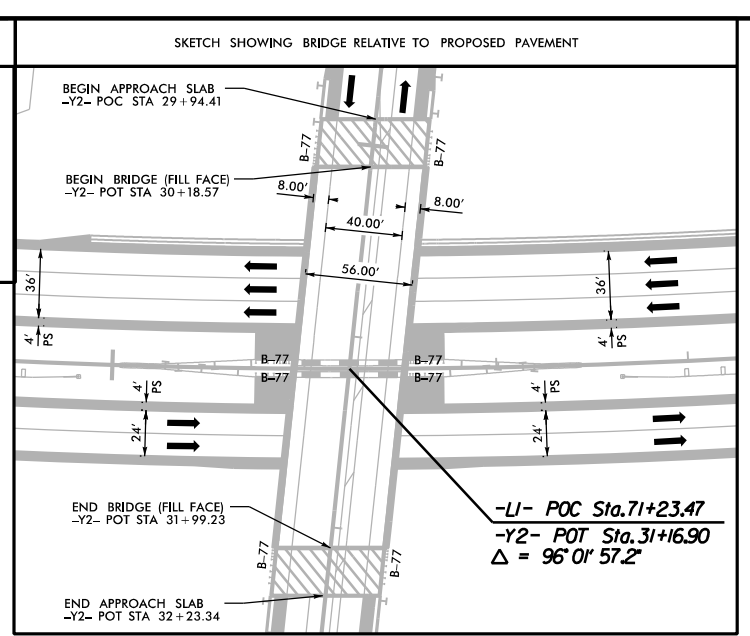
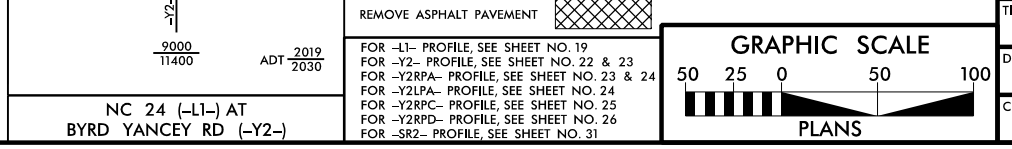


Table with columns for stationing (e.g., -SR2-, -Y2RPC-, -Y2POT-) and technical data including PI, Δ, D, L, T, R, e, and RO values.

UTILITIES BY OTHERS
ALL PROPOSED UTILITY WORK SHOWN ON THIS SHEET WILL BE DONE BY OTHERS. NO PAYMENT WILL BE MADE TO THE CONTRACTOR FOR PROPOSED UTILITY WORK SHOWN ON THIS SHEET



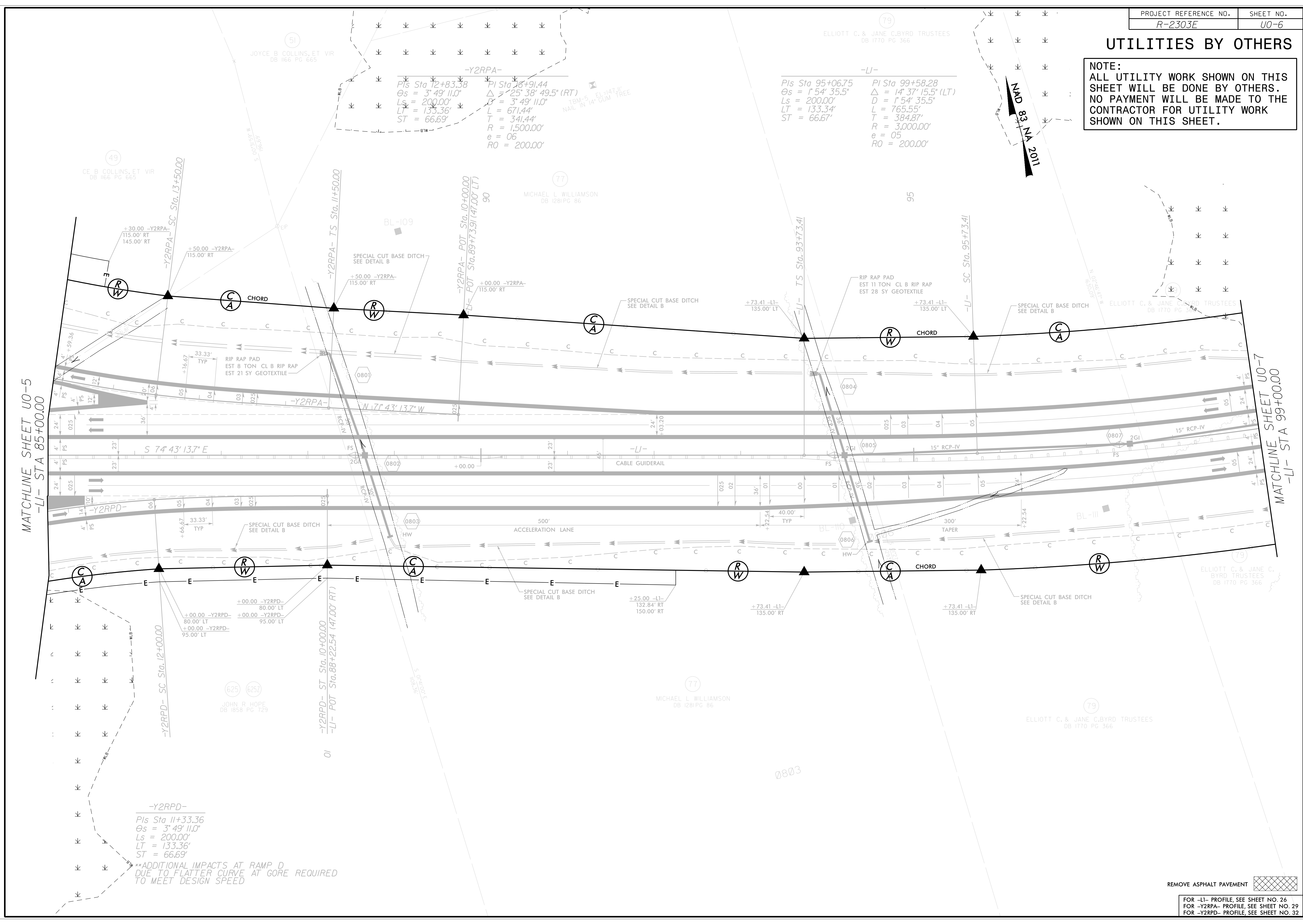
REMOVE ASPHALT PAVEMENT
FOR -U- PROFILE SEE SHEET NO. 19
FOR -Y2- PROFILE SEE SHEET NO. 22 & 23
FOR -Y2P- PROFILE SEE SHEET NO. 24
FOR -Y2PC- PROFILE SEE SHEET NO. 25
FOR -Y2R- PROFILE SEE SHEET NO. 26
FOR -SR- PROFILE SEE SHEET NO. 31

LOCATION: US-401 FROM SOUTH OF US-70 (GARLAND HWY) SOUTHEAST END TO NORTH OF CECIL-DOB RD
SHEET NO.: R-2303E COUNTY: SAMPSON
DESIGNED BY: GRAY MOSELEY P.E.
CHECKED BY: TRENT HUFFMAN P.E. DATE: 02/19/19

C:\Users\mcc... \AppData\Local\Temp\... \BYRD_YANCEY_RD_[Y2]_UO-5.dwg

UTILITIES BY OTHERS

NOTE:
ALL UTILITY WORK SHOWN ON THIS SHEET WILL BE DONE BY OTHERS. NO PAYMENT WILL BE MADE TO THE CONTRACTOR FOR UTILITY WORK SHOWN ON THIS SHEET.



MATCHLINE SHEET U0-5
-LI- STA 85+00.00

MATCHLINE SHEET U0-7
-LI- STA 99+00.00

-Y2RPA-
 PIs Sta 12+83.38 PI Sta 16+91.44
 $\theta_s = 3^\circ 49' 11.0''$ $\Delta = 25^\circ 38' 49.5''$ (RT)
 $L_s = 200.00'$ $D = 3^\circ 49' 11.0''$
 $LT = 133.36'$ $L = 671.44'$
 $ST = 66.69'$ $T = 341.44'$
 $R = 1,500.00'$
 $e = 06$
 $RO = 200.00'$

-LI-
 PIs Sta 95+06.75 PI Sta 99+58.28
 $\theta_s = 1^\circ 54' 35.5''$ $\Delta = 14^\circ 37' 15.5''$ (LT)
 $L_s = 200.00'$ $D = 1^\circ 54' 35.5''$
 $LT = 133.34'$ $L = 765.55'$
 $ST = 66.67'$ $T = 384.87'$
 $R = 3,000.00'$
 $e = 05$
 $RO = 200.00'$

-Y2RPD-
 PIs Sta 11+33.36
 $\theta_s = 3^\circ 49' 11.0''$
 $L_s = 200.00'$
 $LT = 133.36'$
 $ST = 66.69'$

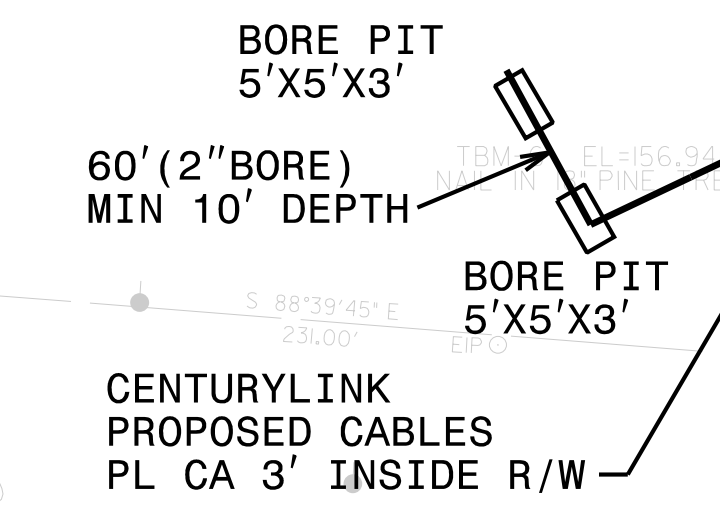
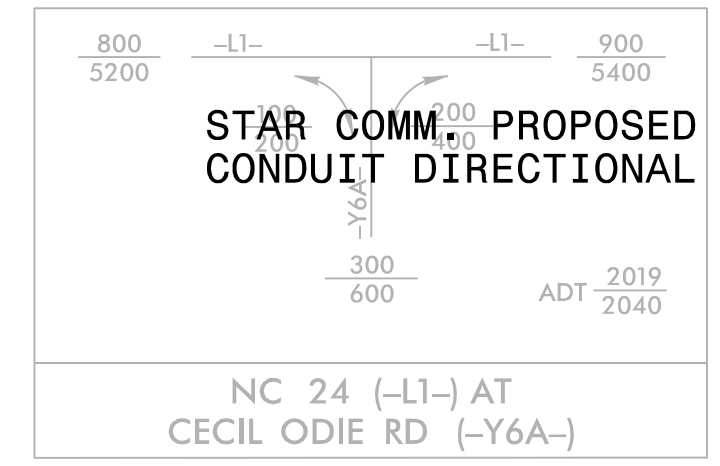
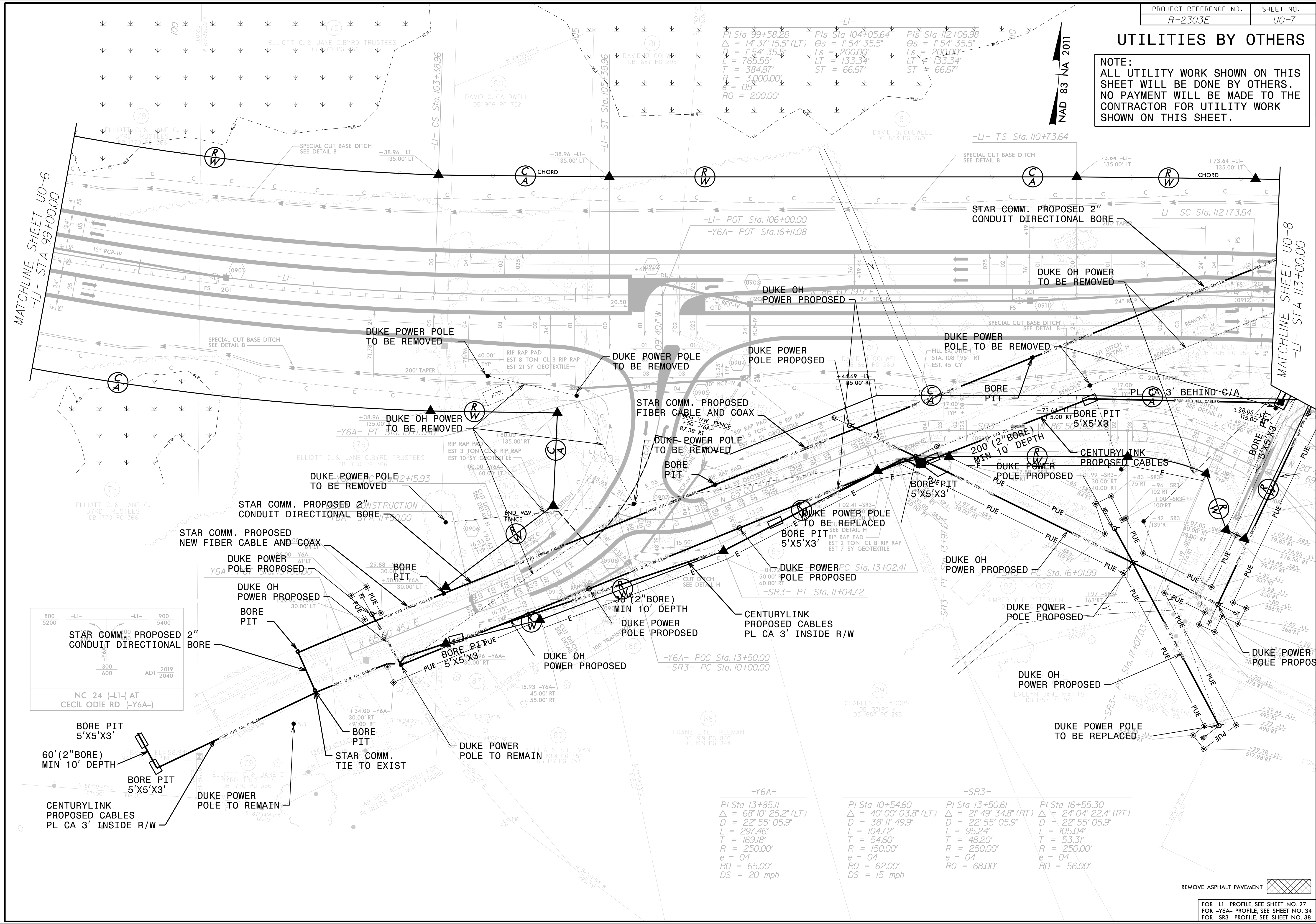
**ADDITIONAL IMPACTS AT RAMP D
DUE TO FLATTER CURVE AT GORE REQUIRED
TO MEET DESIGN SPEED

REMOVE ASPHALT PAVEMENT

FOR -LI- PROFILE, SEE SHEET NO. 26
FOR -Y2RPA- PROFILE, SEE SHEET NO. 29
FOR -Y2RPD- PROFILE, SEE SHEET NO. 32

UTILITIES BY OTHERS

NOTE:
ALL UTILITY WORK SHOWN ON THIS SHEET WILL BE DONE BY OTHERS. NO PAYMENT WILL BE MADE TO THE CONTRACTOR FOR UTILITY WORK SHOWN ON THIS SHEET.



-Y6A-

PI Sta 13+85.11	$\Delta = 68^{\circ}10'25.2"$ (LT)
D = 22'55'05.9"	L = 297.46'
T = 169.18'	R = 250.00'
e = 04	RO = 65.00'
DS = 20 mph	

-SR3-

PI Sta 10+54.60	$\Delta = 40^{\circ}00'03.8"$ (LT)
D = 38'11'49.9"	L = 104.72'
T = 54.60'	R = 150.00'
e = 04	RO = 62.00'
DS = 15 mph	

PI Sta 13+50.61	$\Delta = 21^{\circ}49'34.8"$ (RT)
D = 22'55'05.9"	L = 95.24'
T = 48.20'	R = 250.00'
e = 04	RO = 68.00'

PI Sta 16+55.30	$\Delta = 24^{\circ}04'22.4"$ (RT)
D = 22'55'05.9"	L = 105.04'
T = 53.31'	R = 250.00'
e = 04	RO = 56.00'

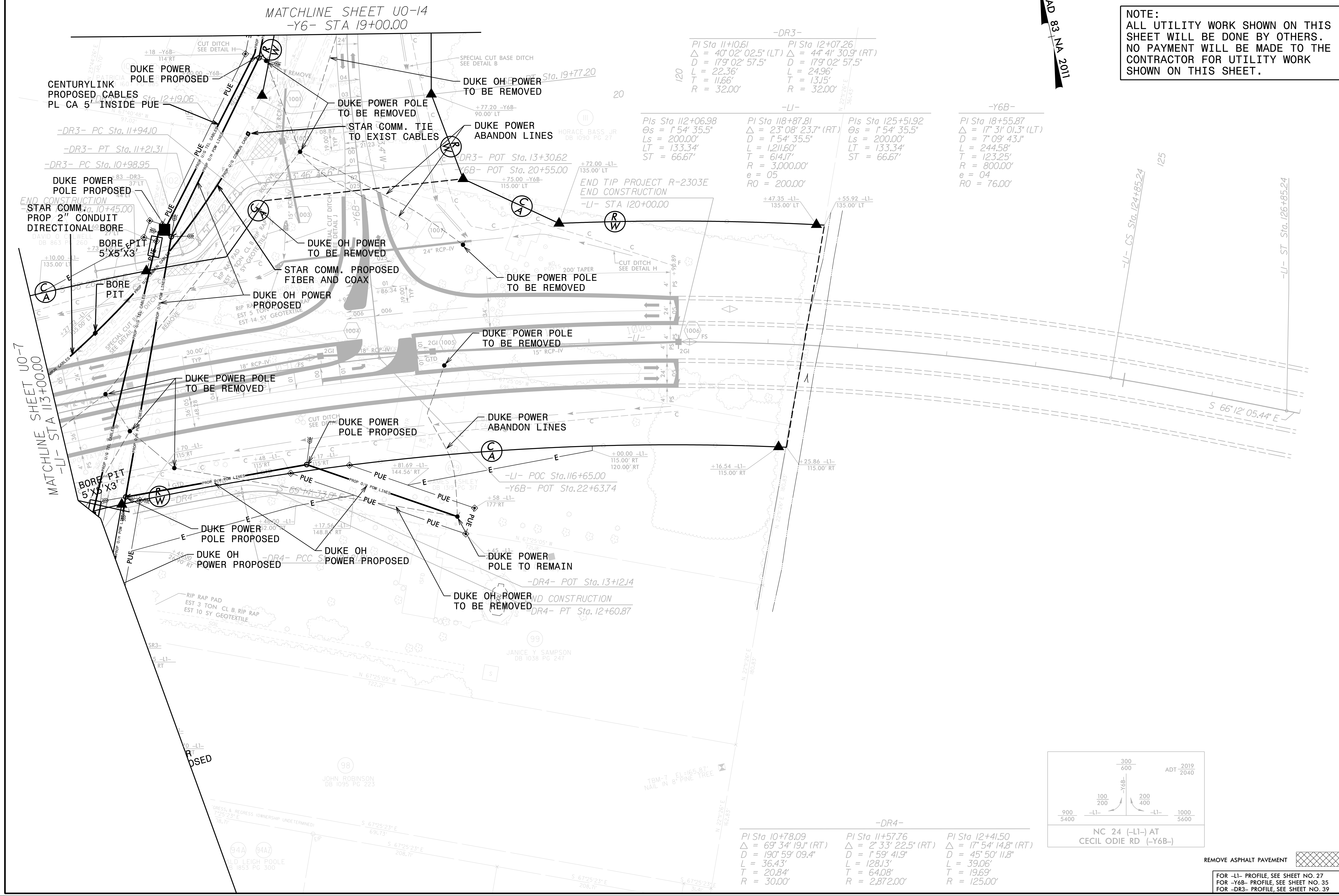
REMOVE ASPHALT PAVEMENT

FOR -LI- PROFILE, SEE SHEET NO. 27
FOR -Y6A- PROFILE, SEE SHEET NO. 34
FOR -SR3- PROFILE, SEE SHEET NO. 38

UTILITIES BY OTHERS

NOTE:
ALL UTILITY WORK SHOWN ON THIS SHEET WILL BE DONE BY OTHERS. NO PAYMENT WILL BE MADE TO THE CONTRACTOR FOR UTILITY WORK SHOWN ON THIS SHEET.

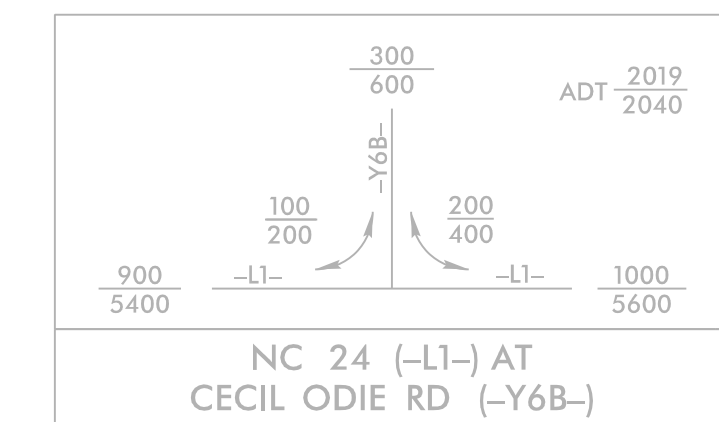
NAD 83 NA 2011



-DR3-		-LI-		-Y6B-	
PI Sta 11+0.61	PI Sta 12+07.26	PI Sta 112+06.98	PI Sta 118+87.81	PI Sta 125+51.92	PI Sta 18+55.87
$\Delta = 40' 02' 02.5''$ (LT)	$\Delta = 44' 41' 30.9''$ (RT)	$\Delta = 23' 08' 23.7''$ (RT)	$\Delta = 17' 31' 01.3''$ (LT)	$\Delta = 17' 31' 01.3''$ (LT)	$\Delta = 17' 31' 01.3''$ (LT)
$D = 179' 02' 57.5''$	$D = 179' 02' 57.5''$	$D = 179' 02' 57.5''$	$D = 179' 02' 57.5''$	$D = 179' 02' 57.5''$	$D = 179' 02' 57.5''$
$L = 22.36'$	$L = 24.96'$	$L = 1211.60'$	$L = 1211.60'$	$L = 1211.60'$	$L = 244.58'$
$T = 11.66'$	$T = 13.15'$	$T = 614.17'$	$T = 614.17'$	$T = 614.17'$	$T = 123.25'$
$R = 32.00'$	$R = 32.00'$	$R = 3,000.00'$	$R = 3,000.00'$	$R = 3,000.00'$	$R = 800.00'$
		$e = 05$	$e = 05$	$e = 05$	$e = 04$
		$RO = 200.00'$	$RO = 200.00'$	$RO = 200.00'$	$RO = 76.00'$

MATCHLINE SHEET U0-7
-LI- STA 113+00.00

-LI- CS Sta. 124+85.24
-LI- ST Sta. 126+85.24



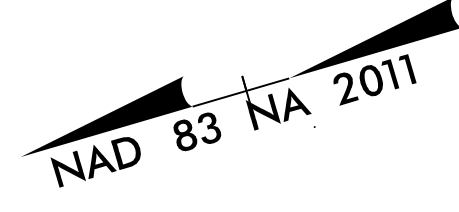
-DR4-		
PI Sta 10+78.09	PI Sta 11+57.76	PI Sta 12+41.50
$\Delta = 69' 34' 19.1''$ (RT)	$\Delta = 2' 33' 22.5''$ (RT)	$\Delta = 17' 54' 14.8''$ (RT)
$D = 190' 59' 09.4''$	$D = 1' 59' 41.9''$	$D = 45' 50' 11.8''$
$L = 36.43'$	$L = 128.13'$	$L = 39.06'$
$T = 20.84'$	$T = 64.08'$	$T = 19.69'$
$R = 30.00'$	$R = 2,872.00'$	$R = 125.00'$

REMOVE ASPHALT PAVEMENT

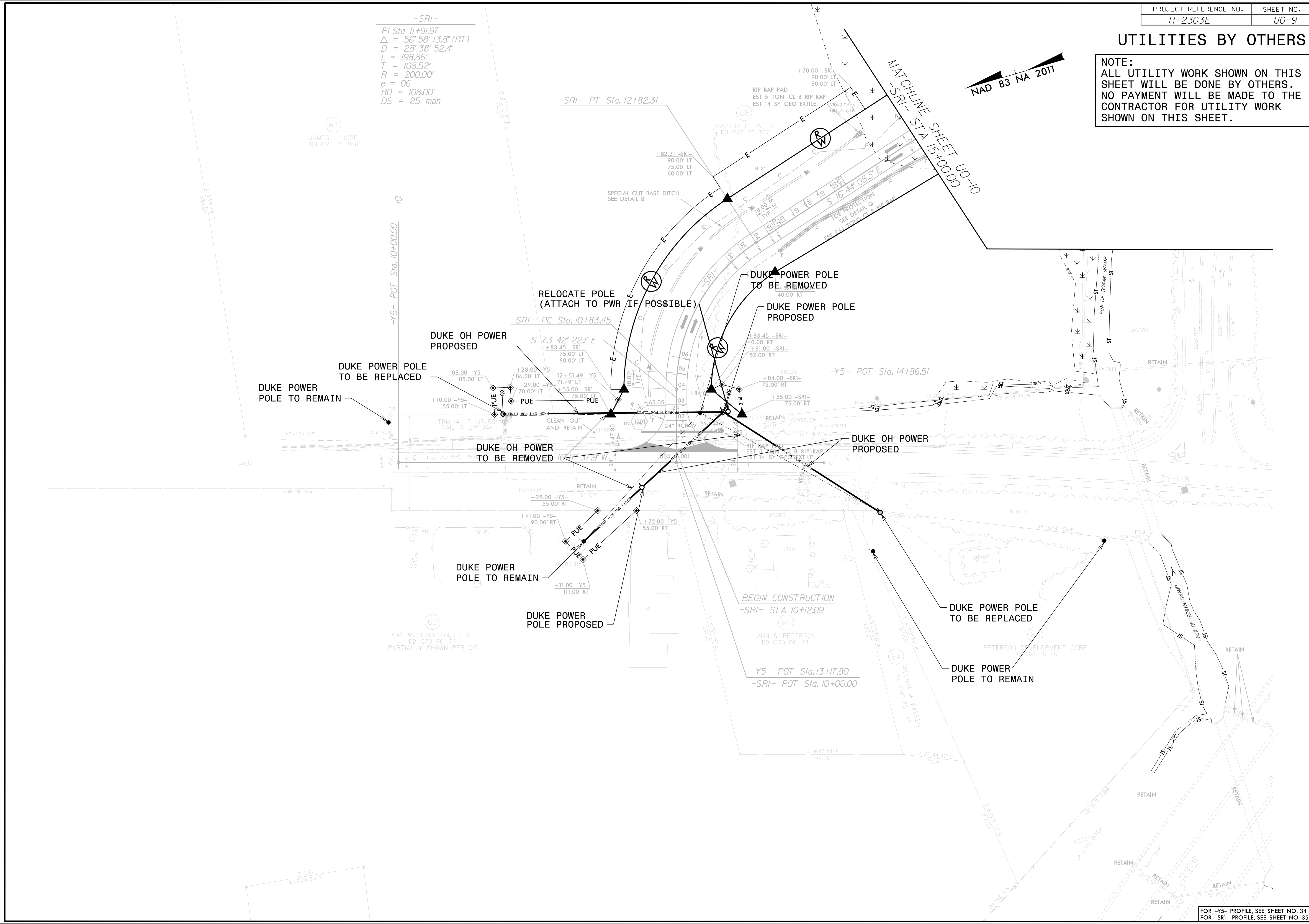
FOR -LI- PROFILE, SEE SHEET NO. 27
FOR -Y6B- PROFILE, SEE SHEET NO. 35
FOR -DR3- PROFILE, SEE SHEET NO. 39

UTILITIES BY OTHERS

NOTE:
ALL UTILITY WORK SHOWN ON THIS SHEET WILL BE DONE BY OTHERS. NO PAYMENT WILL BE MADE TO THE CONTRACTOR FOR UTILITY WORK SHOWN ON THIS SHEET.

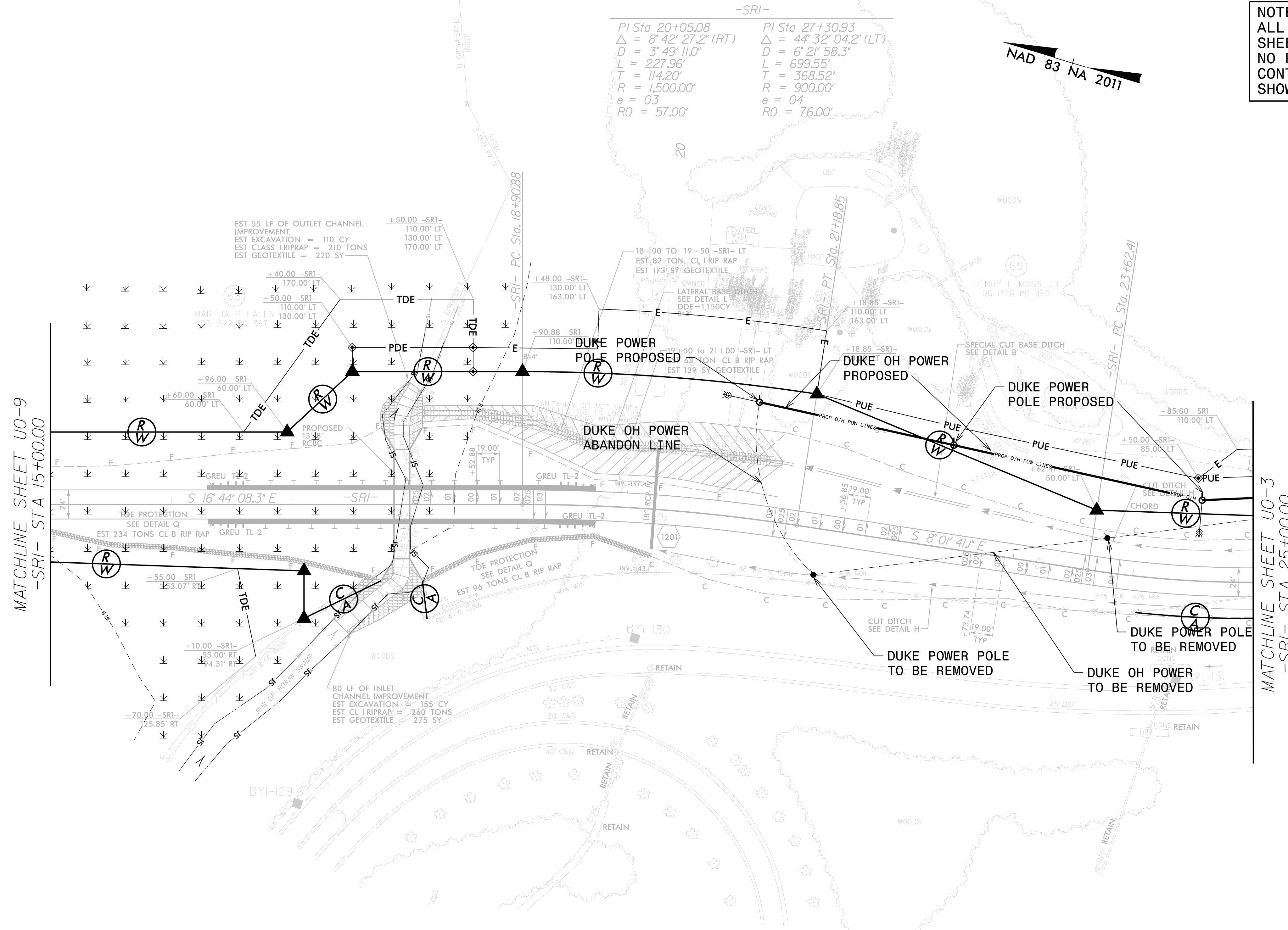


-SRI-
 PI Sta. 11+91.97
 $\Delta = 56^{\circ} 58' 13.8''$ (RT)
 $D = 28^{\circ} 38' 52.4''$
 $L = 198.86'$
 $T = 108.52'$
 $R = 200.00'$
 $e = 06$
 $RO = 108.00'$
 $DS = 25$ mph



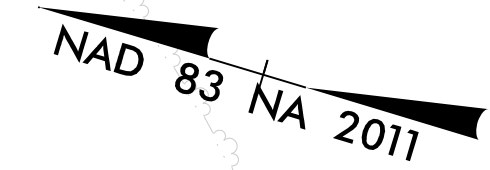
UTILITIES BY OTHERS

NOTE:
ALL UTILITY WORK SHOWN ON THIS SHEET WILL BE DONE BY OTHERS. NO PAYMENT WILL BE MADE TO THE CONTRACTOR FOR UTILITY WORK SHOWN ON THIS SHEET.



-SRI-

PI Sta 20+05.08	PI Sta 27+30.93
$\Delta = 8^{\circ} 42' 27.2" (RT)$	$\Delta = 44^{\circ} 32' 04.2" (LT)$
$D = 3^{\circ} 49' 11.0"$	$D = 6^{\circ} 21' 58.3"$
$L = 227.96'$	$L = 699.55'$
$T = 114.20'$	$T = 368.52'$
$R = 1,500.00'$	$R = 900.00'$
$e = 03$	$e = 04$
$RO = 57.00'$	$RO = 76.00'$

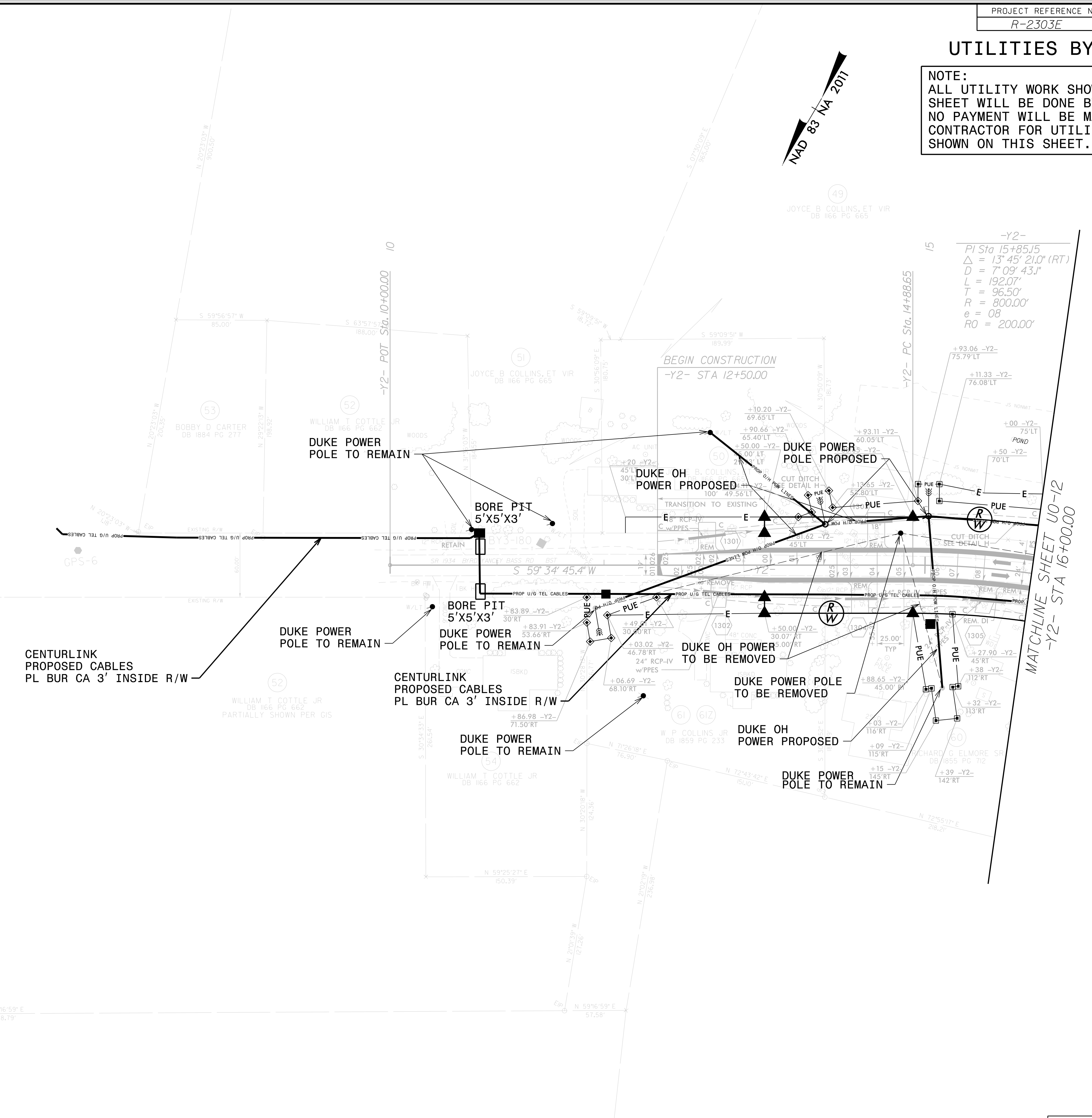
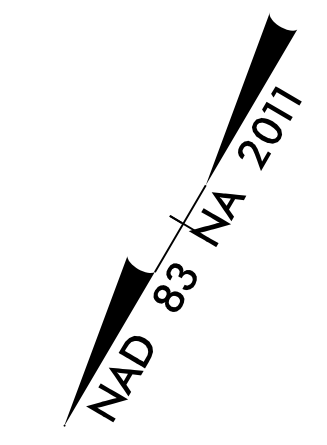


MATCHLINE SHEET U0-9
-SRI- STA 15+00.00

MATCHLINE SHEET U0-3
-SRI- STA 25+00.00

UTILITIES BY OTHERS

NOTE:
ALL UTILITY WORK SHOWN ON THIS SHEET WILL BE DONE BY OTHERS. NO PAYMENT WILL BE MADE TO THE CONTRACTOR FOR UTILITY WORK SHOWN ON THIS SHEET.



CENTURLINK
PROPOSED CABLES
PL BUR CA 3' INSIDE R/W

DUKE POWER
POLE TO REMAIN

CENTURLINK
PROPOSED CABLES
PL BUR CA 3' INSIDE R/W

DUKE POWER
POLE TO REMAIN

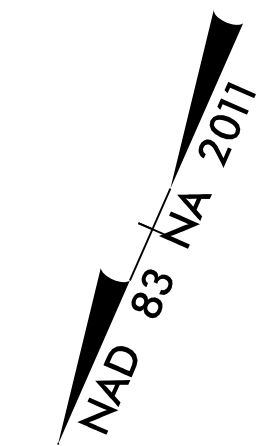
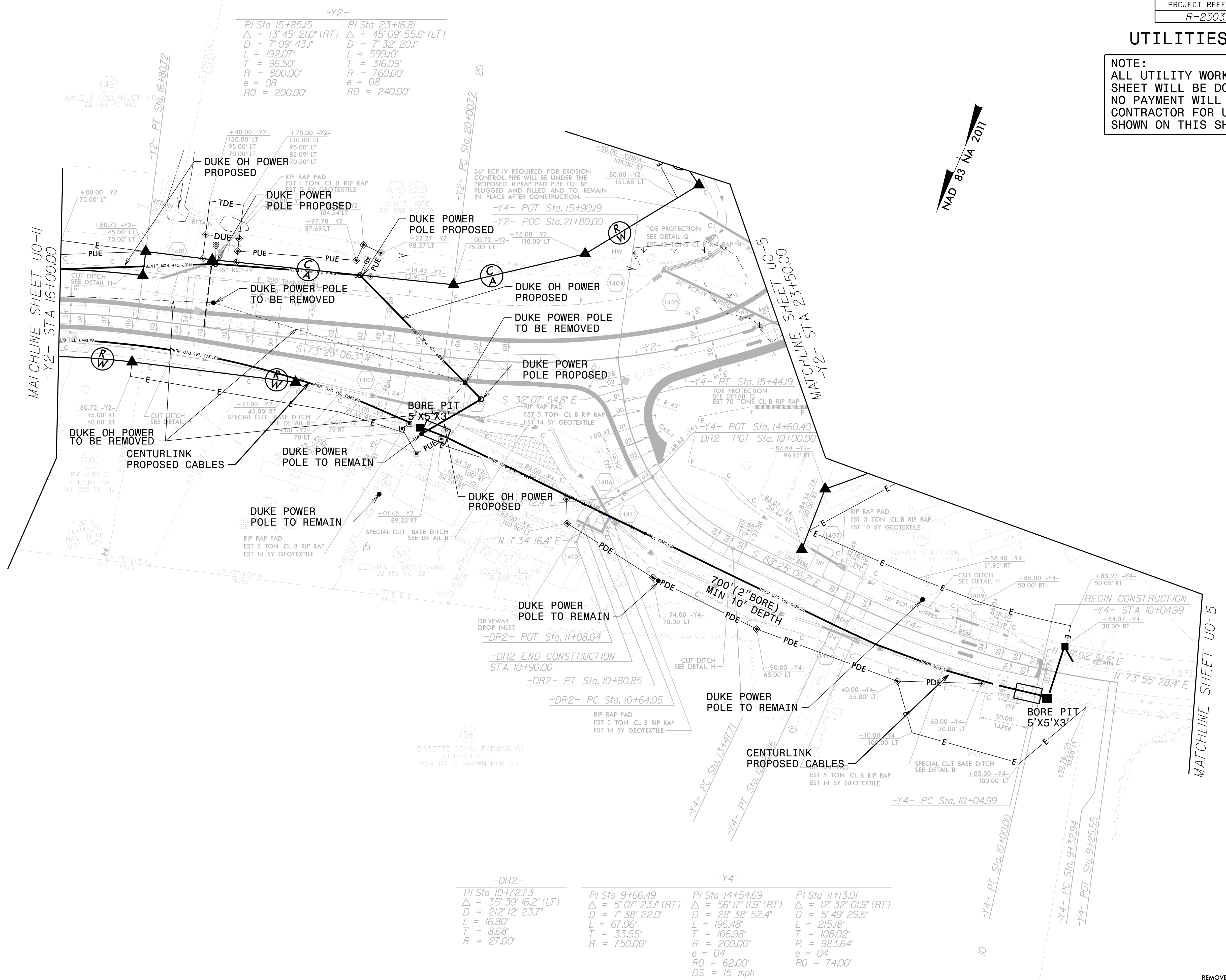
DUKE OH
POWER PROPOSED

DUKE POWER
POLE TO REMAIN

MATCHLINE SHEET U0-12
-Y2- STA 16+00.00

UTILITIES BY OTHERS

NOTE:
ALL UTILITY WORK SHOWN ON THIS SHEET WILL BE DONE BY OTHERS. NO PAYMENT WILL BE MADE TO THE CONTRACTOR FOR UTILITY WORK SHOWN ON THIS SHEET.



-Y2-

PI Sta 15+85.15	PI Sta 23+16.81
$\Delta = 13^{\circ} 45' 21.0''$ (RT)	$\Delta = 45^{\circ} 09' 55.6''$ (LT)
D = 7' 09' 43.1"	D = 7' 32' 20.1"
L = 192.07'	L = 599.10'
T = 96.50'	T = 316.09'
R = 800.00'	R = 760.00'
e = 08	e = 08
RO = 200.00'	RO = 240.00'

-DR2-

PI Sta 10+72.73
$\Delta = 35^{\circ} 39' 16.2''$ (LT)
D = 21' 12' 23.7"
L = 16.80'
T = 8.68'
R = 27.00'

-Y4-

PI Sta 9+66.49	PI Sta 14+54.69
$\Delta = 5^{\circ} 07' 23.1''$ (RT)	$\Delta = 56^{\circ} 17' 11.9''$ (RT)
D = 7' 38' 22.0"	D = 28' 38' 52.4"
L = 67.06'	L = 196.48'
T = 33.55'	T = 106.98'
R = 750.00'	R = 200.00'
	e = 04
	RO = 62.00'
	DS = 15 mph

-Y4-

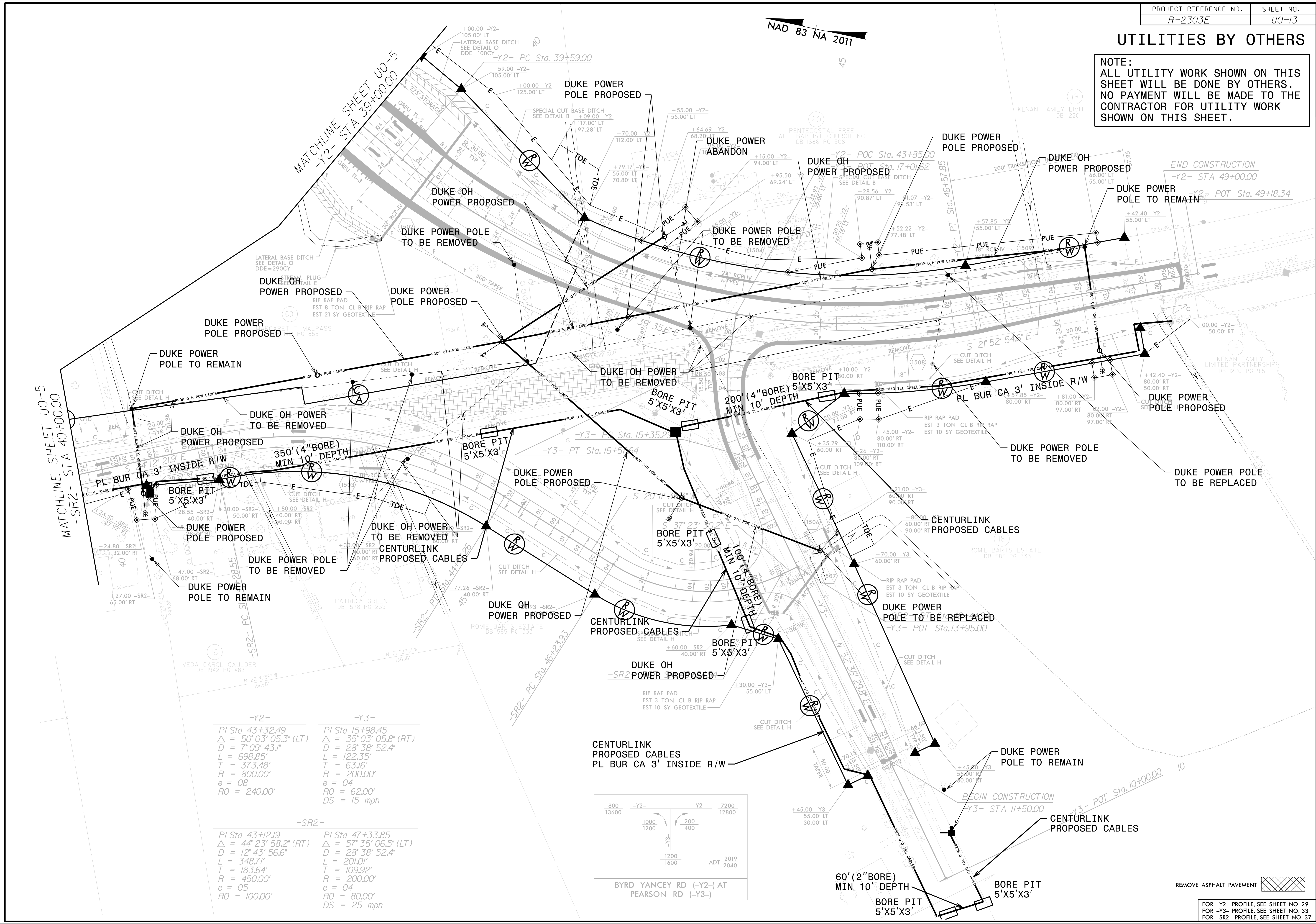
PI Sta 11+13.01
$\Delta = 12^{\circ} 32' 01.9''$ (RT)
D = 5' 49' 29.5"
L = 215.18'
T = 98.02'
R = 983.64'
e = 04
RO = 74.00'

REMOVE ASPHALT PAVEMENT

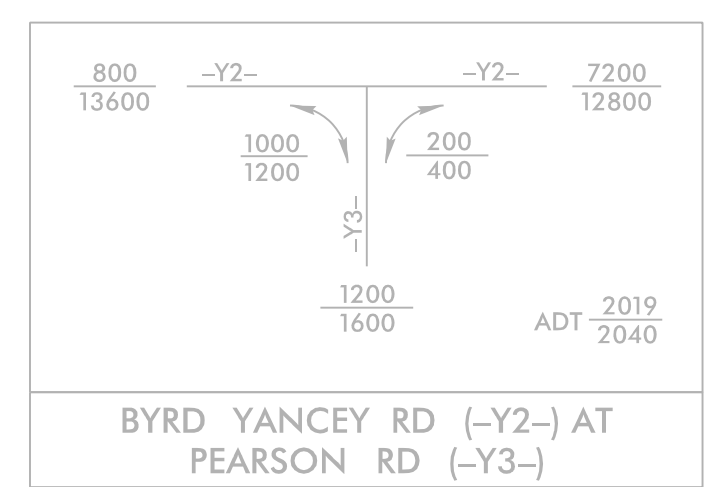
FOR -Y2- PROFILE, SEE SHEET NO. 28
FOR -Y4- PROFILE, SEE SHEET NO. 33
FOR -DR2- PROFILE, SEE SHEET NO. 39

UTILITIES BY OTHERS

NOTE:
ALL UTILITY WORK SHOWN ON THIS SHEET WILL BE DONE BY OTHERS. NO PAYMENT WILL BE MADE TO THE CONTRACTOR FOR UTILITY WORK SHOWN ON THIS SHEET.



-Y2-		-Y3-	
PI Sta 43+32.49	PI Sta 15+98.45	PI Sta 47+33.85	PI Sta 47+33.85
$\Delta = 50^{\circ} 03' 05.3" (LT)$	$\Delta = 35^{\circ} 03' 05.8" (RT)$	$\Delta = 57^{\circ} 35' 06.5" (LT)$	$\Delta = 57^{\circ} 35' 06.5" (LT)$
$D = 7^{\circ} 09' 43.1"$	$D = 28^{\circ} 38' 52.4"$	$D = 28^{\circ} 38' 52.4"$	$D = 28^{\circ} 38' 52.4"$
$L = 698.85'$	$L = 122.35'$	$L = 201.0'$	$L = 201.0'$
$T = 373.48'$	$T = 63.16'$	$T = 109.92'$	$T = 109.92'$
$R = 800.00'$	$R = 200.00'$	$R = 200.00'$	$R = 200.00'$
$e = 08$	$e = 04$	$e = 05$	$e = 04$
$RO = 240.00'$	$RO = 62.00'$	$RO = 100.00'$	$RO = 80.00'$
	$DS = 15 \text{ mph}$		$DS = 25 \text{ mph}$



REMOVE ASPHALT PAVEMENT

FOR -Y2- PROFILE SEE SHEET NO. 29
FOR -Y3- PROFILE SEE SHEET NO. 33
FOR -SR2- PROFILE SEE SHEET NO. 37

UTILITIES BY OTHERS

NOTE:
ALL UTILITY WORK SHOWN ON THIS SHEET WILL BE DONE BY OTHERS. NO PAYMENT WILL BE MADE TO THE CONTRACTOR FOR UTILITY WORK SHOWN ON THIS SHEET.

-Y6B-
PI Sta 18+55.87
 $\Delta = 17^{\circ} 31' 01.3" (LT)$
 $D = 7^{\circ} 09' 43.1"$
 $L = 244.58'$
 $T = 123.25'$
 $R = 800.00'$
 $e = 04$
 $RO = 76.00'$

