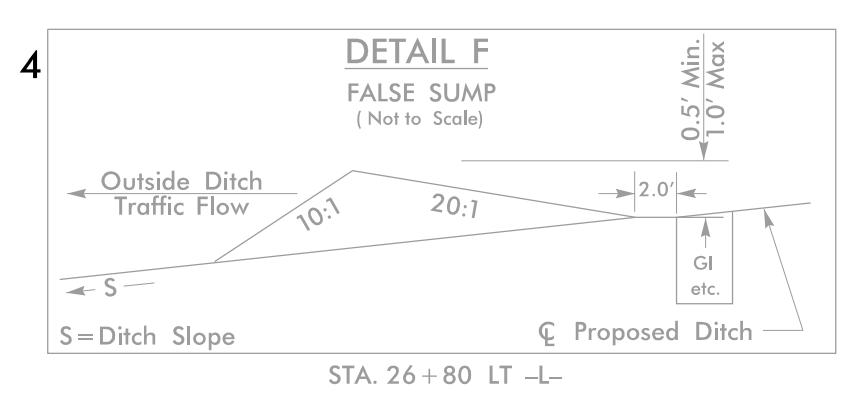


PROJECT REFERENCE NO.	SHEET NO.
R-5812	EC-05/CONST.05
RW SHEET NO.	
ROADWAY DESIGN ENGINEER	HYDRAULICS ENGINEER

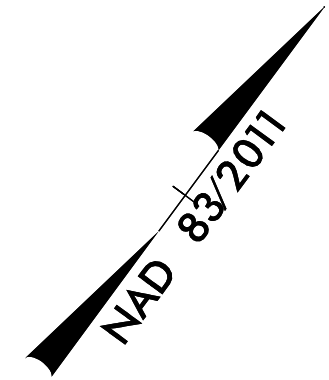
**HDR** HDR Engineering, Inc. of the Carolinas  
 555 Fayetteville St. Suite 900 Raleigh, N.C. 27601  
 N.C.B.E.L.S. License Number: F-0116

CLEARING AND GRUBBING  
 EROSION CONTROL FOR  
 CONSTRUCTION SHEET 05



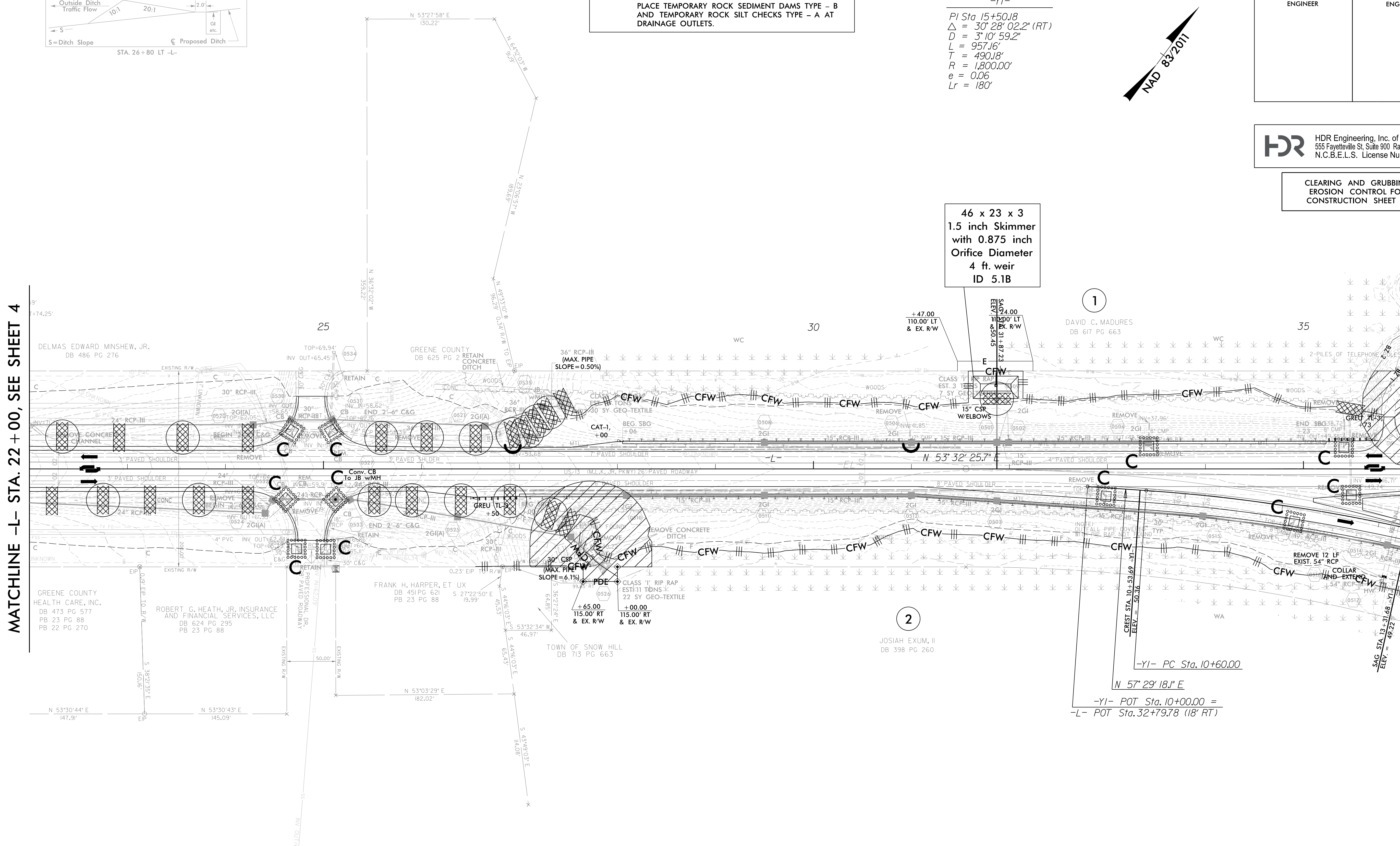
NOTE: PLACE TEMPORARY ROCK SEDIMENT DAMS TYPE - B AND TEMPORARY ROCK SILT CHECKS TYPE - A AT DRAINAGE OUTLETS.

-YI-  
 PI Sta. 15+50.18  
 $\Delta = 30' 28' 02.2''$  (RT)  
 $D = 3' 10' 59.2''$   
 $L = 957.16'$   
 $T = 490.18'$   
 $R = 1,800.00'$   
 $e = 0.06$   
 $Lr = 180'$



MATCHLINE -L- STA. 22 + 00, SEE SHEET 4

MATCHLINE -L- STA. 36 + 00, SEE SHEET 6



46 x 23 x 3  
 1.5 inch Skimmer  
 with 0.875 inch  
 Orifice Diameter  
 4 ft. weir  
 ID 5.1B



DRIVEWAY RADII 50' UNLESS OTHERWISE NOTED  
 SEE SHEET NO 9 FOR -L- PROFILE  
 SEE SHEET NO 12 FOR -YI- PROFILE

DRIVEWAY RADII 50' UNLESS OTHERWISE NOTED  
 SEE SHEET NO 9 FOR -L- PROFILE

REVISIONS

PL01:DRIVER: NCDOT\_color\_eng\_100.plt  
 USER: MMCNAMARA  
 PENTABLE: NCDOT\_EC\_C&G\_BW.tbl  
 TIME: 6/3/2019 5:49:49 PM  
 DATE: 6/3/2019  
 F:\NCDOT\2015\NCDOT\_East\_Reg.Div\_Planming\_Design\LSA\NCDOT-R-5812-US\_13\_Widening\6.0\_CAD\BIM\6.2\_Work\In\_Progress\R-5812\_Hydraulics\EROSTON\_CONTROL\RS812\_HYD\_EC\_PSH.dgn