

**This electronic collection of documents is provided
for the convenience of the user
and is Not a Certified Document –**

**The documents contained herein were originally issued
and sealed by the individuals whose names and license
numbers appear on each page, on the dates appearing
with their signature on that page.**

**This file or an individual page
shall not be considered a certified document.**

09.08/99

TIP PROJECT: I-4700A

STATE OF NORTH CAROLINA
DIVISION OF HIGHWAYS

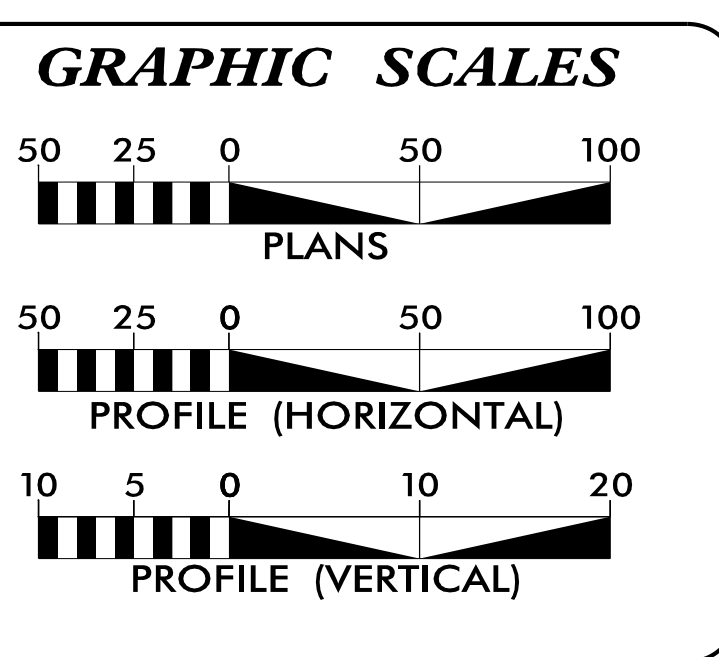
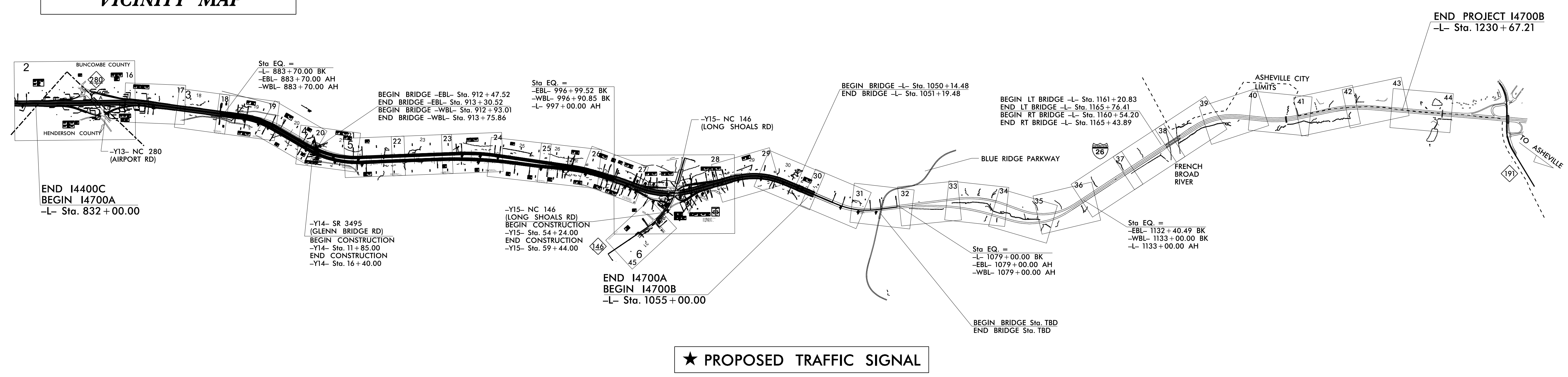
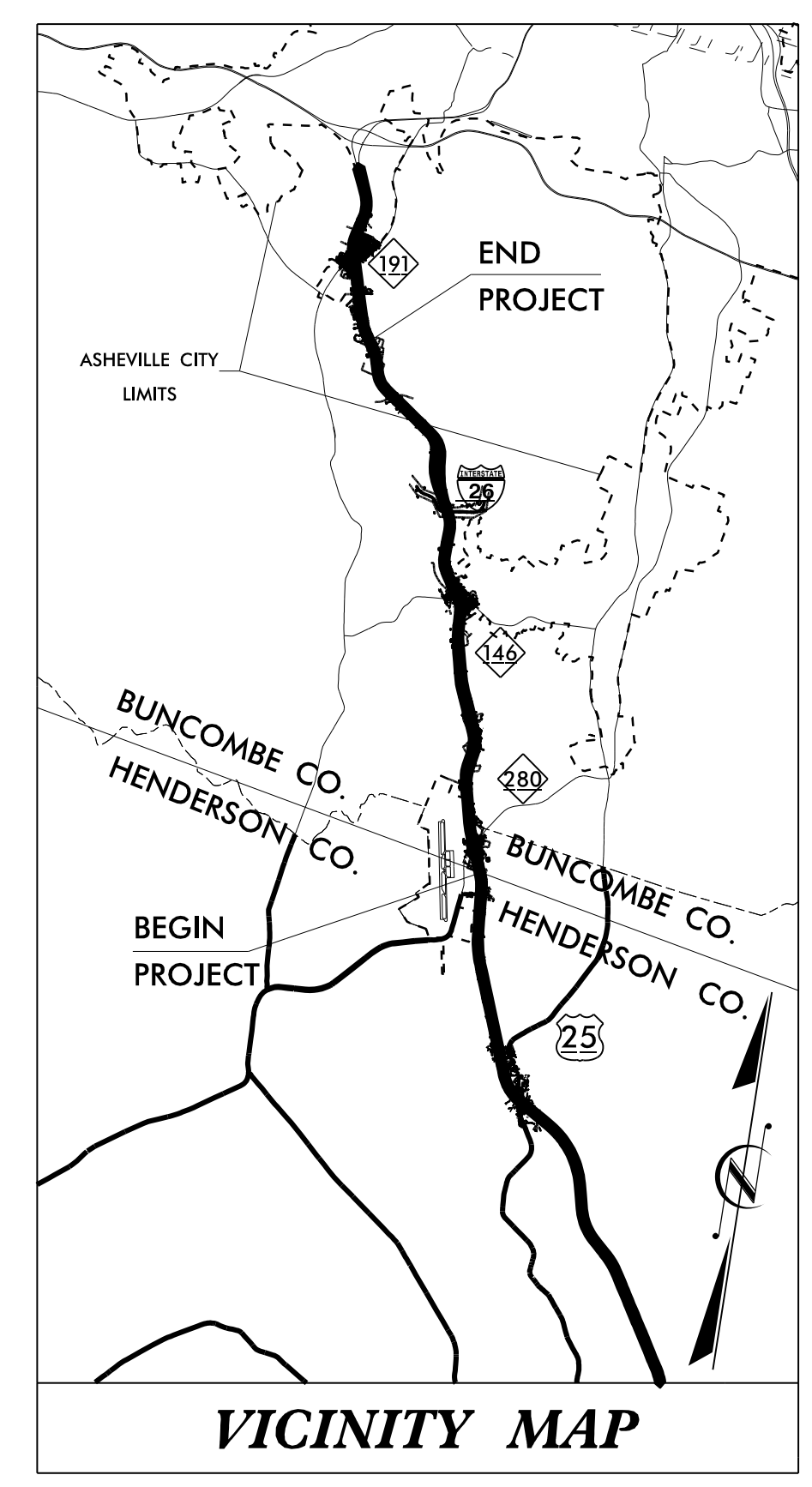
UTILITIES BY OTHERS PLANS
BUNCOMBE & HENDERSON COUNTIES

LOCATION: I-26 BETWEEN NC 280 (AIRPORT ROAD)
AND NC 191 (BREVARD ROAD)
TYPE OF WORK: PROPOSED POWER DISTRIBUTION,
GAS DISTRIBUTION, TELEPHONE,
CATV, WATER & SEWER RELOCATIONS

T.I.P. NO.	SHEET NO.
I-4700A	UO-1

NOTE:
ALL UTILITY WORK SHOWN ON THIS SHEET IS DONE BY OTHERS.
NO PAYMENT WILL BE MADE TO THE CONTRACTOR FOR UTILITY WORK SHOWN ON THIS SHEET.

****NOTE: THIS SUBMITTAL IS ONLY FOR I-4700A PORTION OF PROJECT**



SHEET NO.:	DESCRIPTION:
UO-1	TITLE SHEET
UO-2 TO UO-6	UBO PLAN SHEETS

UTILITY OWNERS WITH CONFLICTS
(A) DUKE ENERGY - POWER (DISTRIBUTION)
(B) AT&T - COMMUNICATIONS
(C) CHARTER - COMMUNICATIONS
(D) PIEDMONT NATURAL GAS - GAS
(E) CITY OF ASHEVILLE - WATER
(F) METROPOLITAN SEWERAGE DISTRICT - SEWER

PREPARED IN THE OFFICE OF:

CIVIL ENGINEERS
ENVIRONMENTAL - CEI
LAND SURVEYING
SUBSURFACE UTILITY ENGINEERING

4865 FALLS OF NEUSE RD
SUITE 400
RALEIGH, NORTH CAROLINA 27609
(919) 783-2214
WWW.KCI.COM

JOHN FAISON UTILITY PROJECT MANAGER
JOHN FAISON PROJECT UTILITY COORDINATOR
SAWYER WALTERS PROJECT UTILITY DESIGNER

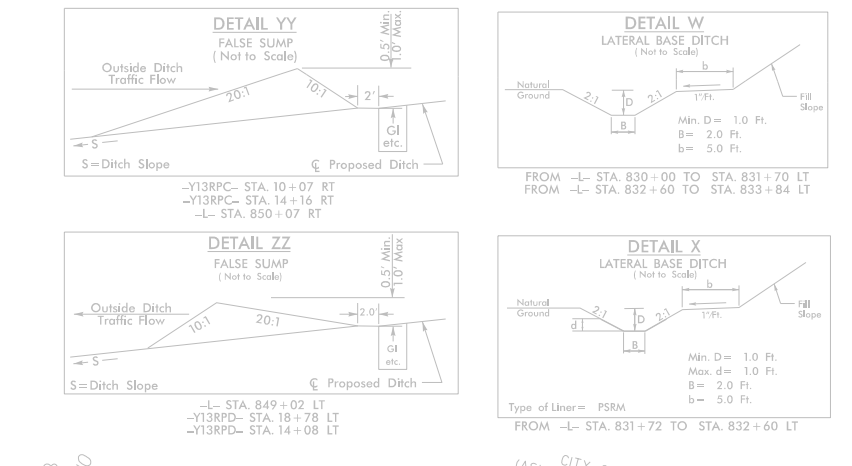
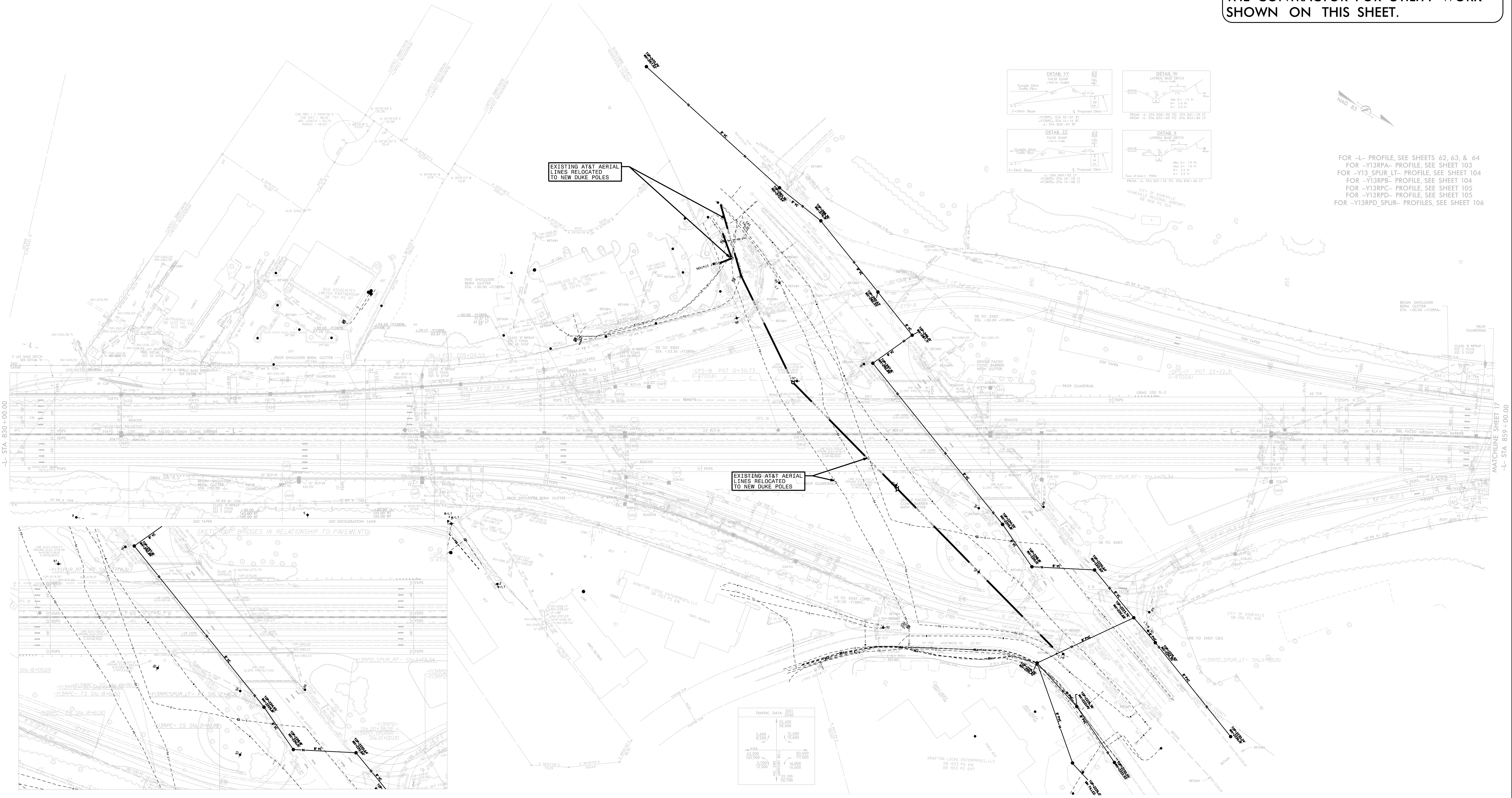
DIVISION OF HIGHWAYS
UTILITIES UNIT
1555 MAIL SERVICES CENTER
RALEIGH, NC 27699-1555
PHONE (919) 707-6690
FAX (919) 250-4151

BYRON SANDERS, PE WESTERN UTILITIES MANAGER
DONALD HAMPTON SENIOR UTILITIES ENGINEER
STEVE TREXLER REGIONAL UTILITY COORDINATOR
STEPHEN SEALY SENIOR UTILITY COORDINATOR

01-NOV-2008 08:00
M:\2010\05005834H- I-4700A Buncombe Co\Utilities\290_001_I4700A_ut_tsh_u001_psh.dgn
\$\$\$\$\$SERNAME\$\$\$\$\$

UTILITIES BY OTHERS

NOTE:
 ALL UTILITY WORK SHOWN ON THIS SHEET IS DONE BY OTHERS.
 NO PAYMENT WILL BE MADE TO THE CONTRACTOR FOR UTILITY WORK SHOWN ON THIS SHEET.



FOR -L- PROFILE, SEE SHEETS 62, 63, & 64
 FOR -Y13RPA- PROFILE, SEE SHEET 103
 FOR -Y13 SPUR LT- PROFILE, SEE SHEET 104
 FOR -Y13RPB- PROFILE, SEE SHEET 104
 FOR -Y13RPC- PROFILE, SEE SHEET 105
 FOR -Y13RPD- PROFILE, SEE SHEET 105
 FOR -Y13RPD_SPUR- PROFILES, SEE SHEET 106

TRAFFIC DATA

AD	2,400	12,000	12,000
AD	12,000	12,000	12,000
AD	12,000	12,000	12,000
AD	12,000	12,000	12,000

**CIVIL ENGINEERS
 ENVIRONMENTAL - CEI
 LAND SURVEYING
 SUBSURFACE UTILITY
 ENGINEERING**

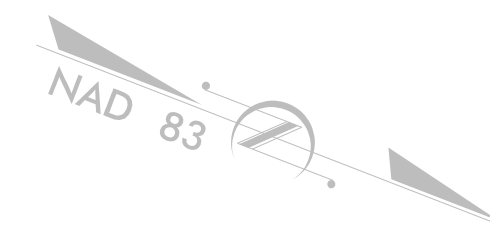
KCI
 ASSOCIATES OF N.C.

4505 FALLS OF NEUSE RD
 SUITE 400
 RALEIGH, NORTH CAROLINA 27609
 (919) 783-9214
 WWW.KCI.COM

5/14/99
 I-4700A_U0-2_U0-2.dgn
 11/15/2016 07:55
 I:\Projects\I-4700A\Utilities\250_002_I4700A_ut_rdy\6_U002_psh.dgn

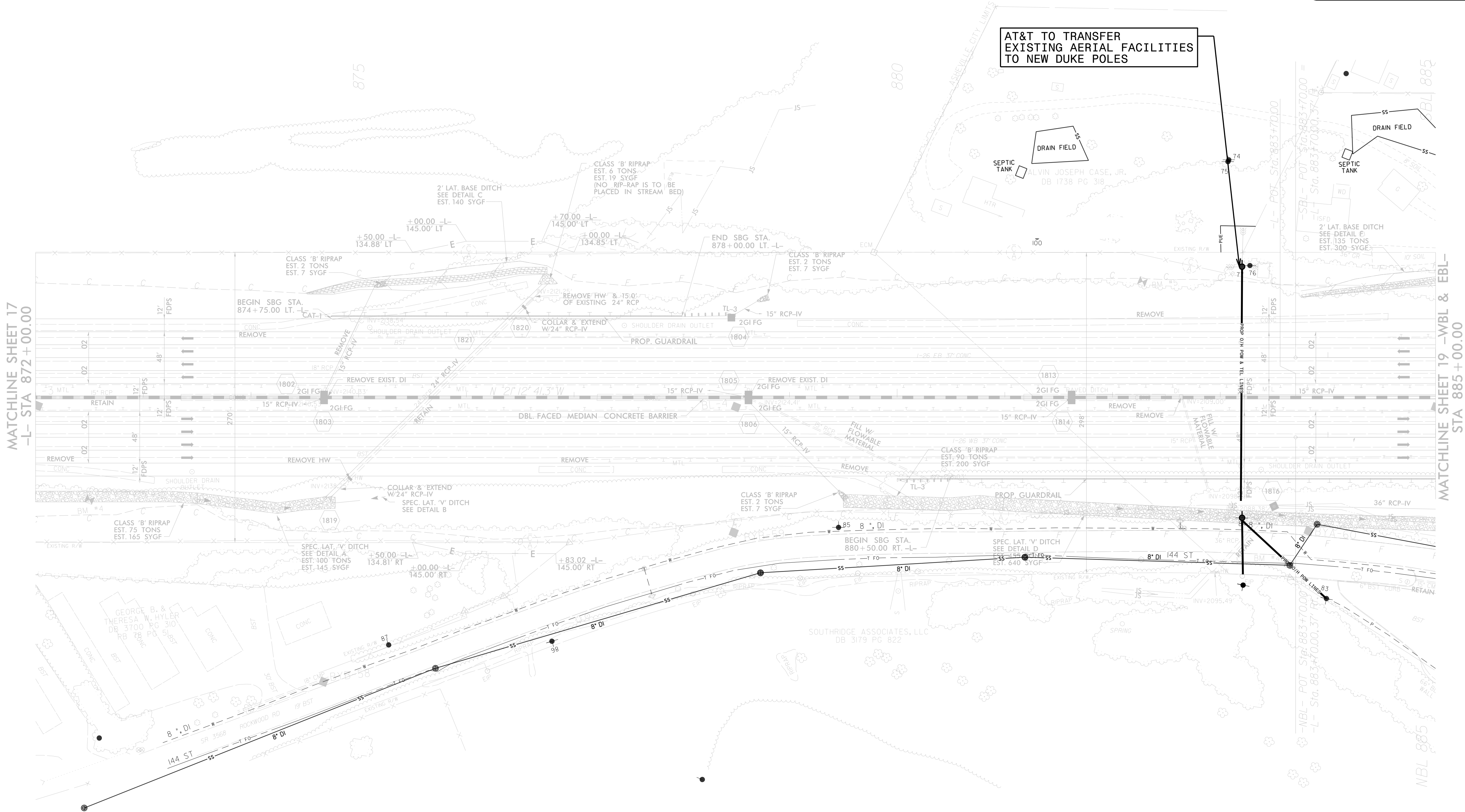
UTILITIES BY OTHERS

NOTE:
 ALL UTILITY WORK SHOWN ON THIS SHEET IS DONE BY OTHERS.
 NO PAYMENT WILL BE MADE TO THE CONTRACTOR FOR UTILITY WORK SHOWN ON THIS SHEET.



AT&T TO TRANSFER EXISTING AERIAL FACILITIES TO NEW DUKE POLES

5/14/99
 I-4700A-Utilities-290-002-14700A-ut-rdy18-U003-esk.dgn
 11/20/2016 07:57
 1-4700A-Utilities-290-002-14700A-ut-rdy18-U003-esk.dgn
 11/20/2016 07:57

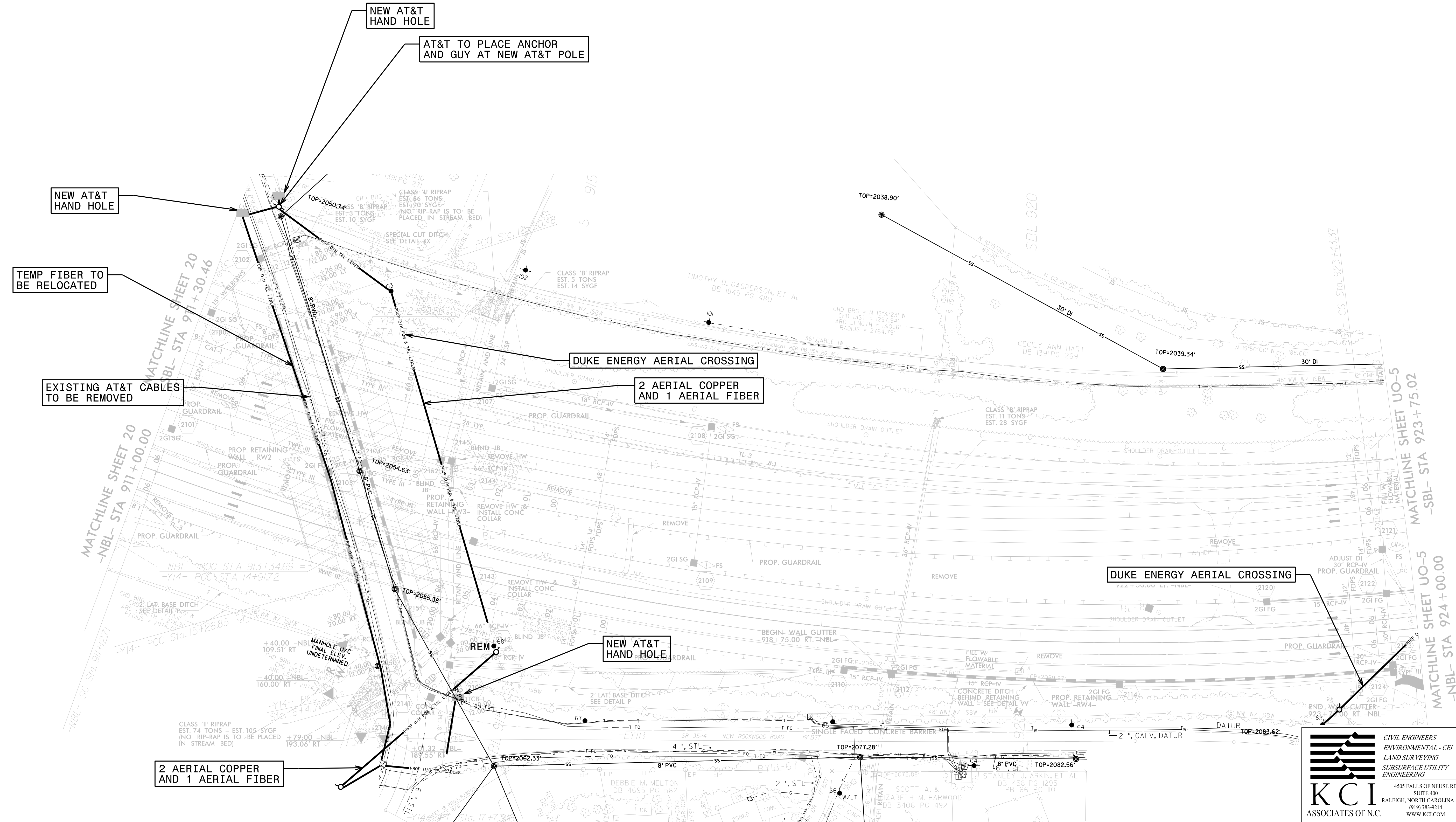
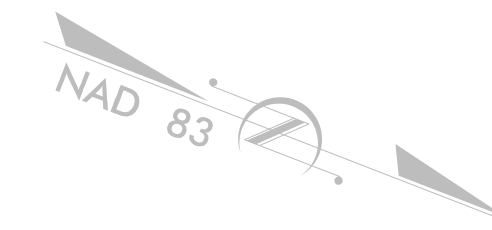


MATCHLINE SHEET 17
 -L- STA 872 + 00.00

MATCHLINE SHEET 19 -WBL & EBL-
 STA 885 + 00.00

UTILITIES BY OTHERS

NOTE:
ALL UTILITY WORK SHOWN ON THIS SHEET IS DONE BY OTHERS.
NO PAYMENT WILL BE MADE TO THE CONTRACTOR FOR UTILITY WORK SHOWN ON THIS SHEET.



KCI
ASSOCIATES OF N.C.

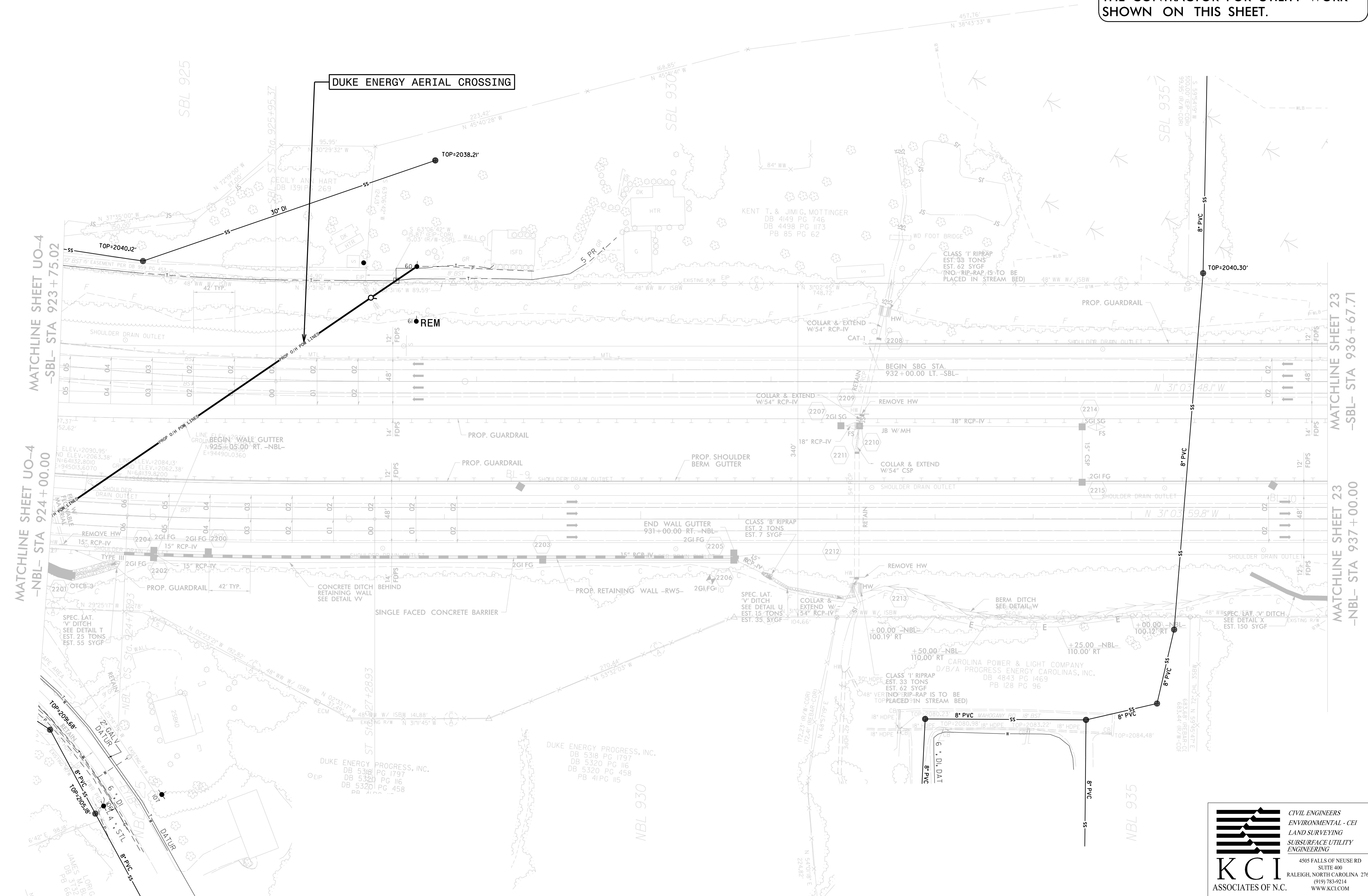
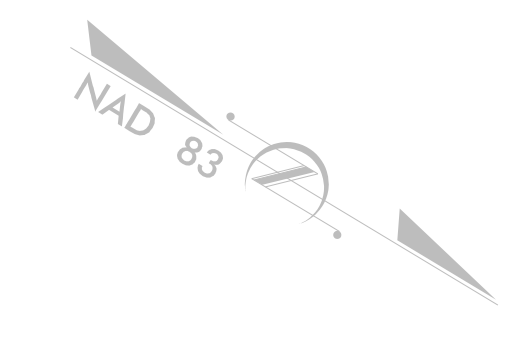
CIVIL ENGINEERS
ENVIRONMENTAL - CEI
LAND SURVEYING
SUBSURFACE UTILITY
ENGINEERING

4505 FALLS OF NEUSE RD
SUITE 400
RALEIGH, NORTH CAROLINA 27609
(919) 783-9214
WWW.KCI.COM

I-4700A-Utilities 250_003_I4700A-ut_rdy21_U004_psh.dgn
 5/14/99
 01 NOV 2016 07:55
 I-4700A-Utilities 250_003_I4700A-ut_rdy21_U004_psh.dgn

UTILITIES BY OTHERS

NOTE:
ALL UTILITY WORK SHOWN ON THIS SHEET IS DONE BY OTHERS.
NO PAYMENT WILL BE MADE TO THE CONTRACTOR FOR UTILITY WORK SHOWN ON THIS SHEET.



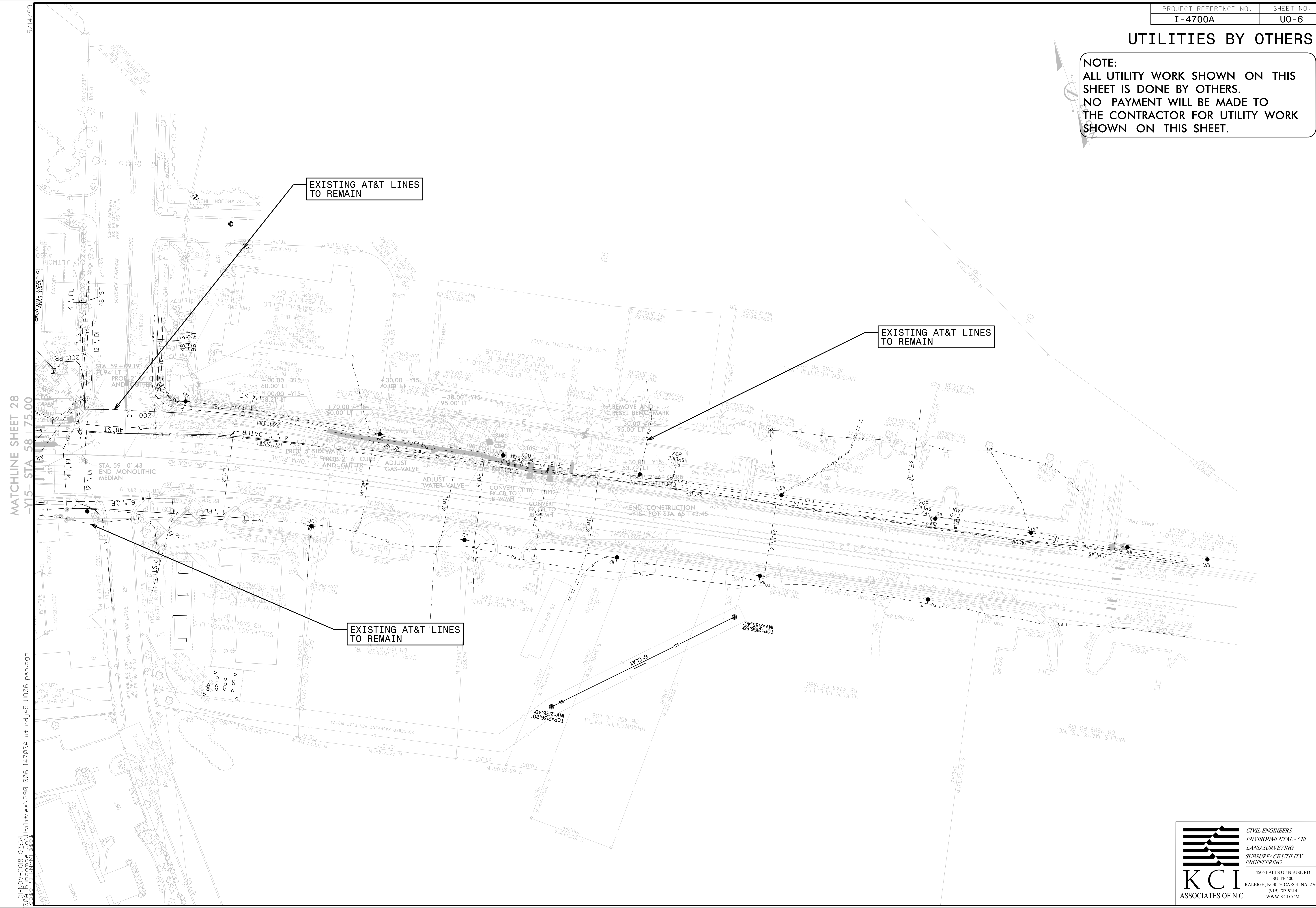
5/14/99
 I-4700A-01-01-001-Utilities-290_005_I4700A-ut_rdy22-U005_psh.dgn
 11/15/2016 07:55
 1-4700A-01-01-001-Utilities-290_005_I4700A-ut_rdy22-U005_psh.dgn
 11/15/2016 07:55

CIVIL ENGINEERS
ENVIRONMENTAL - CEI
LAND SURVEYING
SUBSURFACE UTILITY ENGINEERING
KCI
 ASSOCIATES OF N.C.

4505 FALLS OF NEUSE RD
 SUITE 400
 RALEIGH, NORTH CAROLINA 27609
 (919) 783-9214
 WWW.KCI.COM

UTILITIES BY OTHERS

NOTE:
ALL UTILITY WORK SHOWN ON THIS SHEET IS DONE BY OTHERS.
NO PAYMENT WILL BE MADE TO THE CONTRACTOR FOR UTILITY WORK SHOWN ON THIS SHEET.



MATCHLINE SHEET 28
-15- STA 58+75.00

I-4700A-2016-0754-Utilities-290-006-I4700A-ut-rdy45-U006.psh.dgn
5/14/99

09.08/99

TIP PROJECT: I-4700B

STATE OF NORTH CAROLINA
DIVISION OF HIGHWAYS

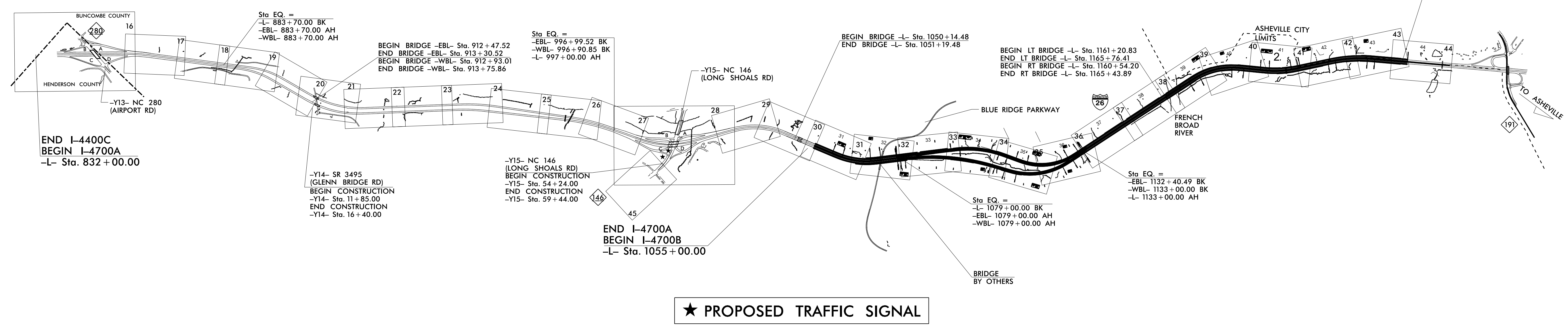
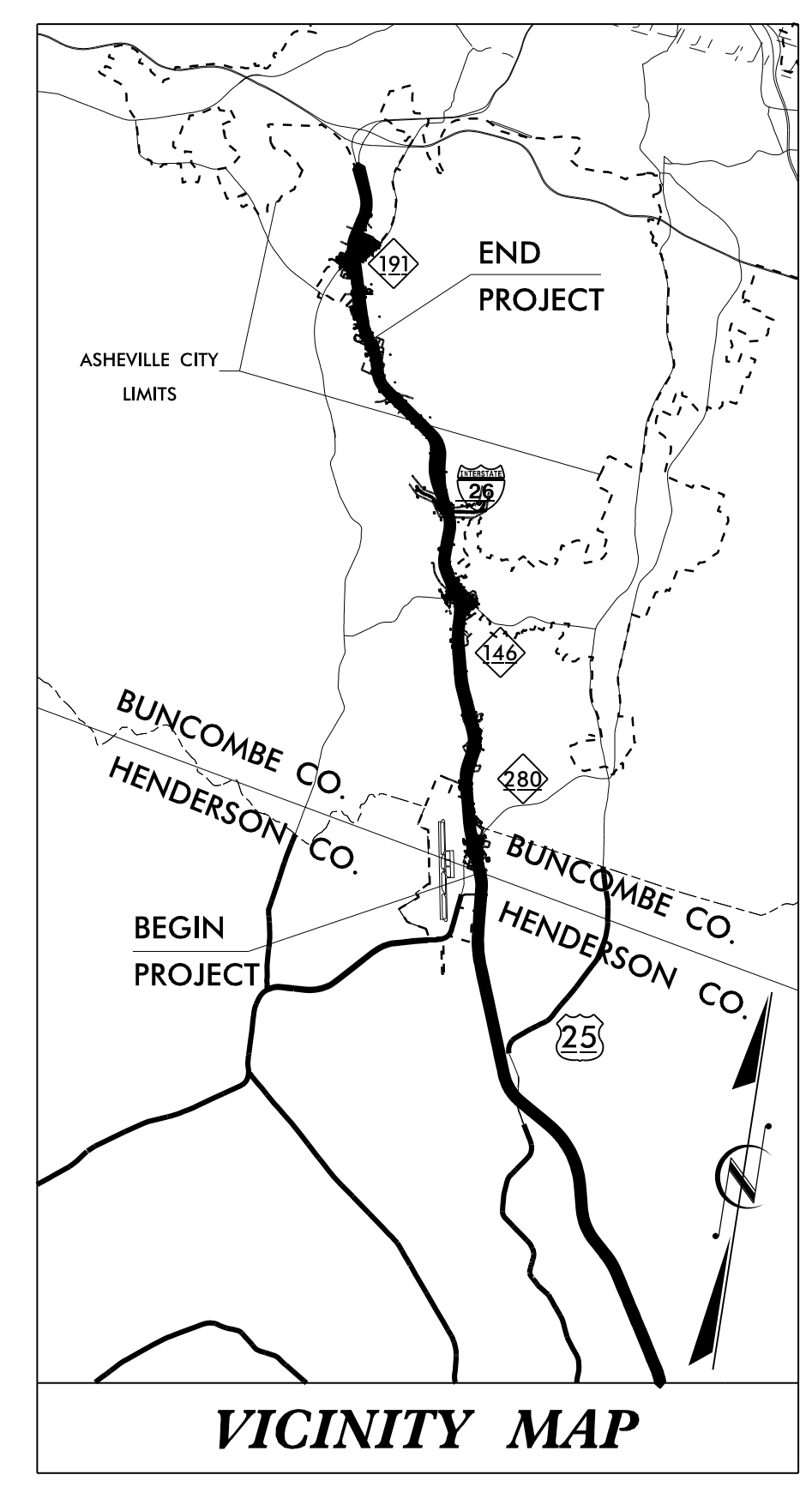
UTILITIES BY OTHERS PLANS
BUNCOMBE & HENDERSON COUNTIES

LOCATION: I-26 BETWEEN NC 280 (AIRPORT ROAD)
AND NC 191 (BREVARD ROAD)
TYPE OF WORK: PROPOSED POWER DISTRIBUTION,
GAS DISTRIBUTION, TELEPHONE,
CATV, WATER & SEWER RELOCATIONS

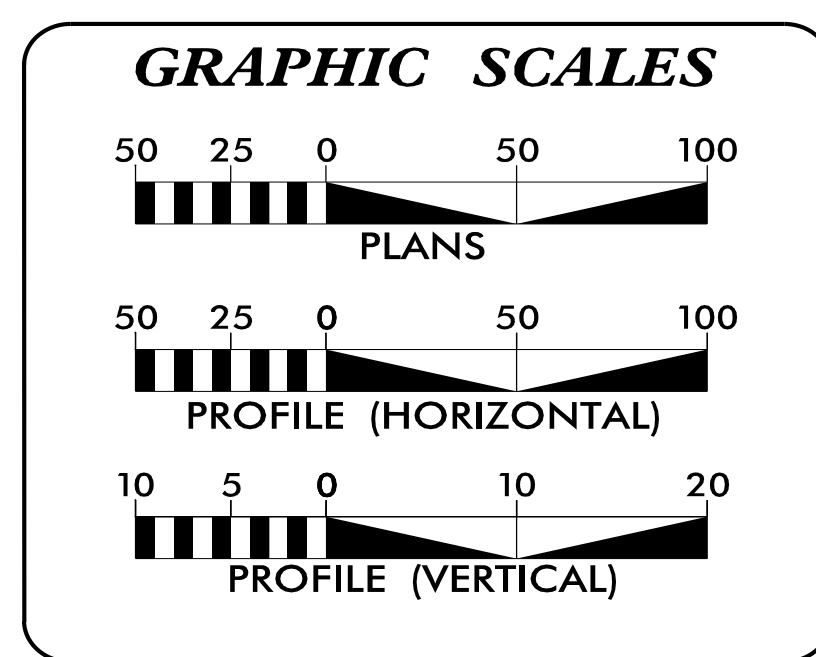
T.I.P. NO.	SHEET NO.
I-4700B	UO-1

NOTE:
ALL UTILITY WORK SHOWN ON THIS SHEET IS DONE BY OTHERS.
NO PAYMENT WILL BE MADE TO THE CONTRACTOR FOR UTILITY WORK SHOWN ON THIS SHEET.

****NOTE: THIS SUBMITTAL IS ONLY FOR I-4700B PORTION OF PROJECT**



01-NOV-2018 08:43
M:\2010\05\058741-
I-4700B Buncombe Co\Utilities\290_00\I4700B_ut_tsh_u001.psh.dgn
\$\$\$\$\$SERNAME\$\$\$\$\$



INDEX OF SHEETS

SHEET NO.:	DESCRIPTION:
UO-1	TITLE SHEET
UO-2	UBO PLAN SHEET

- UTILITY OWNERS WITH CONFLICTS**
- (A) DUKE ENERGY - POWER (DISTRIBUTION)
 - (B) AT&T - COMMUNICATIONS
 - (C) CHARTER - COMMUNICATIONS
 - (D) PIEDMONT NATURAL GAS - GAS
 - (E) CITY OF ASHEVILLE - WATER
 - (F) METROPOLITAN SEWERAGE DISTRICT - SEWER

PREPARED IN THE OFFICE OF:

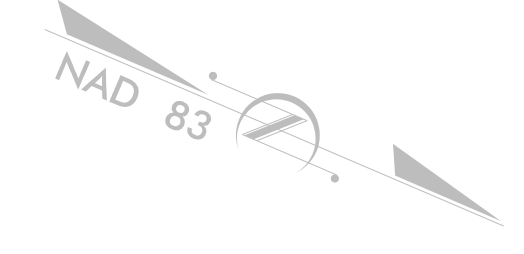
JOHN FAISON UTILITY PROJECT MANAGER
JOHN FAISON PROJECT UTILITY COORDINATOR
SAWYER WALTERS PROJECT UTILITY DESIGNER

**DIVISION OF HIGHWAYS
UTILITIES UNIT**
1555 MAIL SERVICES CENTER
RALEIGH, NC 27699-1555
PHONE (919) 707-6690
FAX (919) 250-4151

BYRON SANDERS, PE WESTERN UTILITIES MANAGER
DONALD HAMPTON SENIOR UTILITIES ENGINEER
STEVE TREXLER REGIONAL UTILITY COORDINATOR
STEPHEN SEALY SENIOR UTILITY COORDINATOR

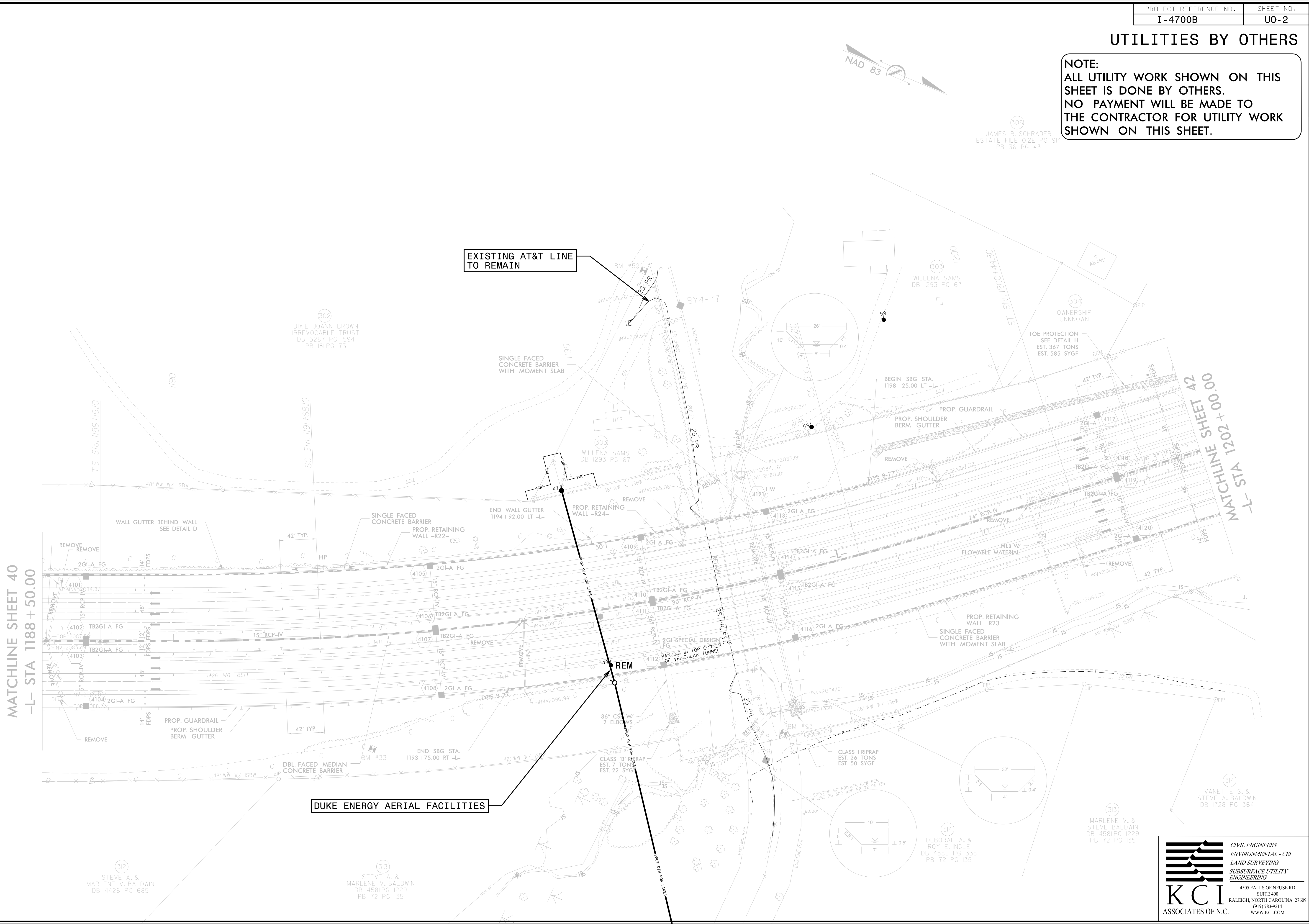
UTILITIES BY OTHERS

NOTE:
ALL UTILITY WORK SHOWN ON THIS SHEET IS DONE BY OTHERS.
NO PAYMENT WILL BE MADE TO THE CONTRACTOR FOR UTILITY WORK SHOWN ON THIS SHEET.



JAMES R. SCHRADER
ESTATE FILE 012E PG 914
PB 36 PG 43

I-4700B.dwg 11/14/2016 08:46 Utilities 290_002_14700B.ut.rdy 41_U002_psh.dgn



EXISTING AT&T LINE TO REMAIN

DUKE ENERGY AERIAL FACILITIES

MATCHLINE SHEET 40
-L- STA 1188+50.00

MATCHLINE SHEET 42
-L- STA 1202+00.00

CIVIL ENGINEERS
ENVIRONMENTAL - CEI
LAND SURVEYING
SUBSURFACE UTILITY ENGINEERING

4505 FALLS OF NEUSE RD
SUITE 400
RALEIGH, NORTH CAROLINA 27609
(919) 783-9214
WWW.KCI.COM