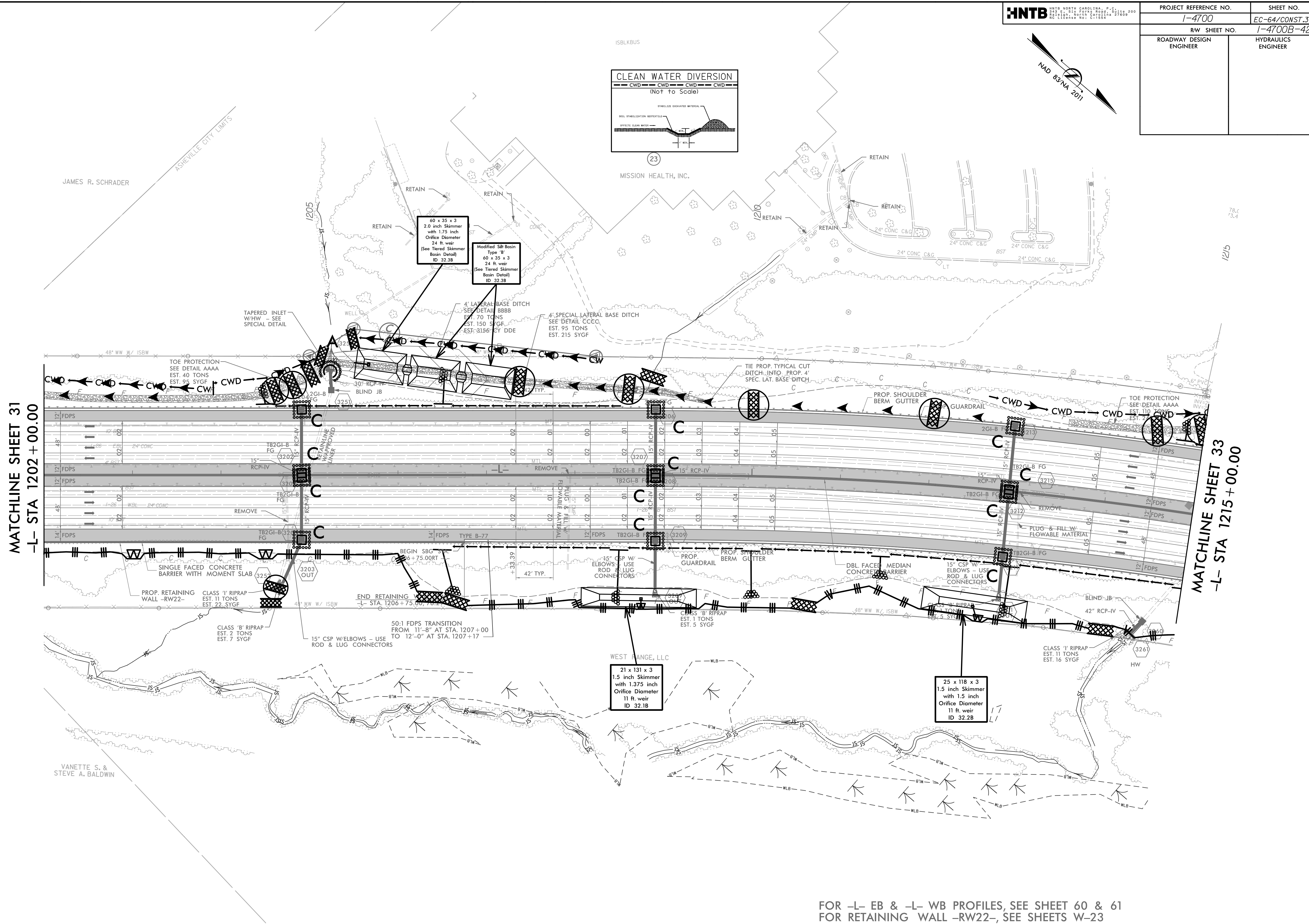
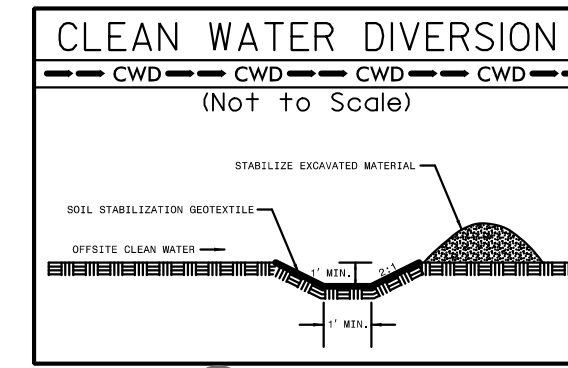
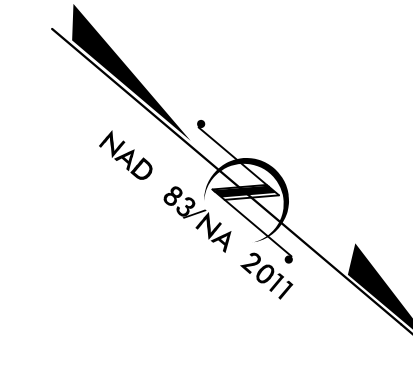


**This electronic collection of documents is provided  
for the convenience of the user  
and is Not a Certified Document –**

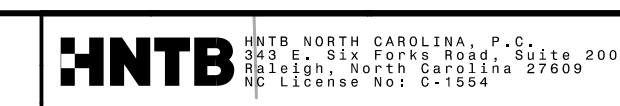
**The documents contained herein were originally issued  
and sealed by the individuals whose names and license  
numbers appear on each page, on the dates appearing  
with their signature on that page.**

**This file or an individual page  
shall not be considered a certified document.**

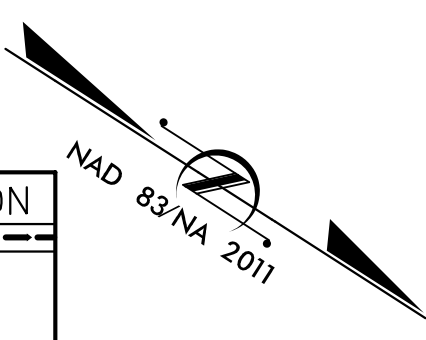
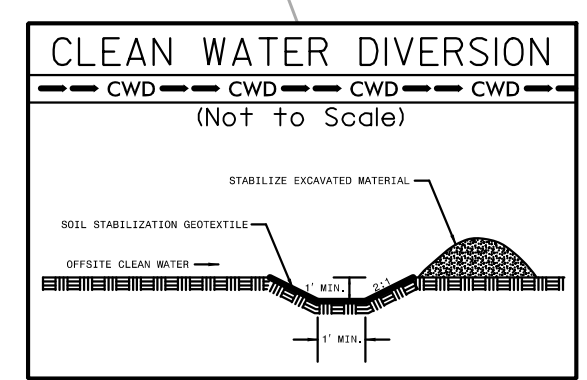


FOR -L- EB & -L- WB PROFILES, SEE SHEET 60 & 61  
 FOR RETAINING WALL -RW22-, SEE SHEETS W-23

7/19/2017

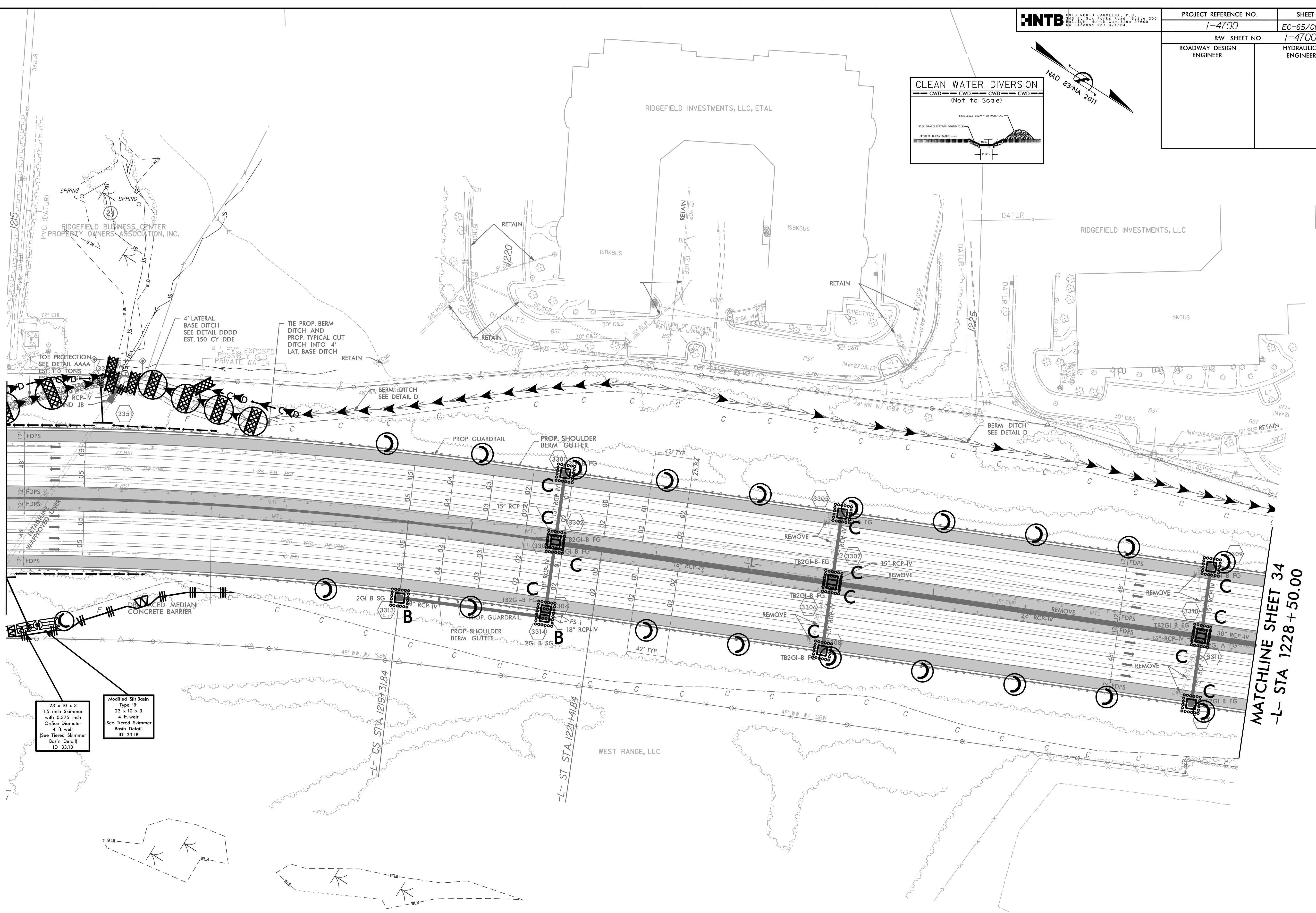


PROJECT REFERENCE NO.	SHEET NO.
1-4700	EC-65/CONST.33
RW SHEET NO.	1-4700B-43
ROADWAY DESIGN ENGINEER	HYDRAULICS ENGINEER



MATCHLINE SHEET 32  
-L- STA 1215 + 00.00

MATCHLINE SHEET 34  
-L- STA 1228 + 50.00



- 23 x 10 x 3  
1.5 inch Skimmer  
with 0.375 inch  
Orifice Diameter  
4 ft. weir  
(See Tiered Skimmer  
Basin Detail)  
ID 33.1B
- Modified Silt Basin  
Type 'B'  
23 x 10 x 3  
4 ft. weir  
(See Tiered Skimmer  
Basin Detail)  
ID 33.1B

2/18/2016  
24661.dgn  
N:\-4700B\_EC\_PSH\_33.dgn  
HNTB

FOR -L- EB & -L- WB PROFILES, SEE SHEETS 61 & 62



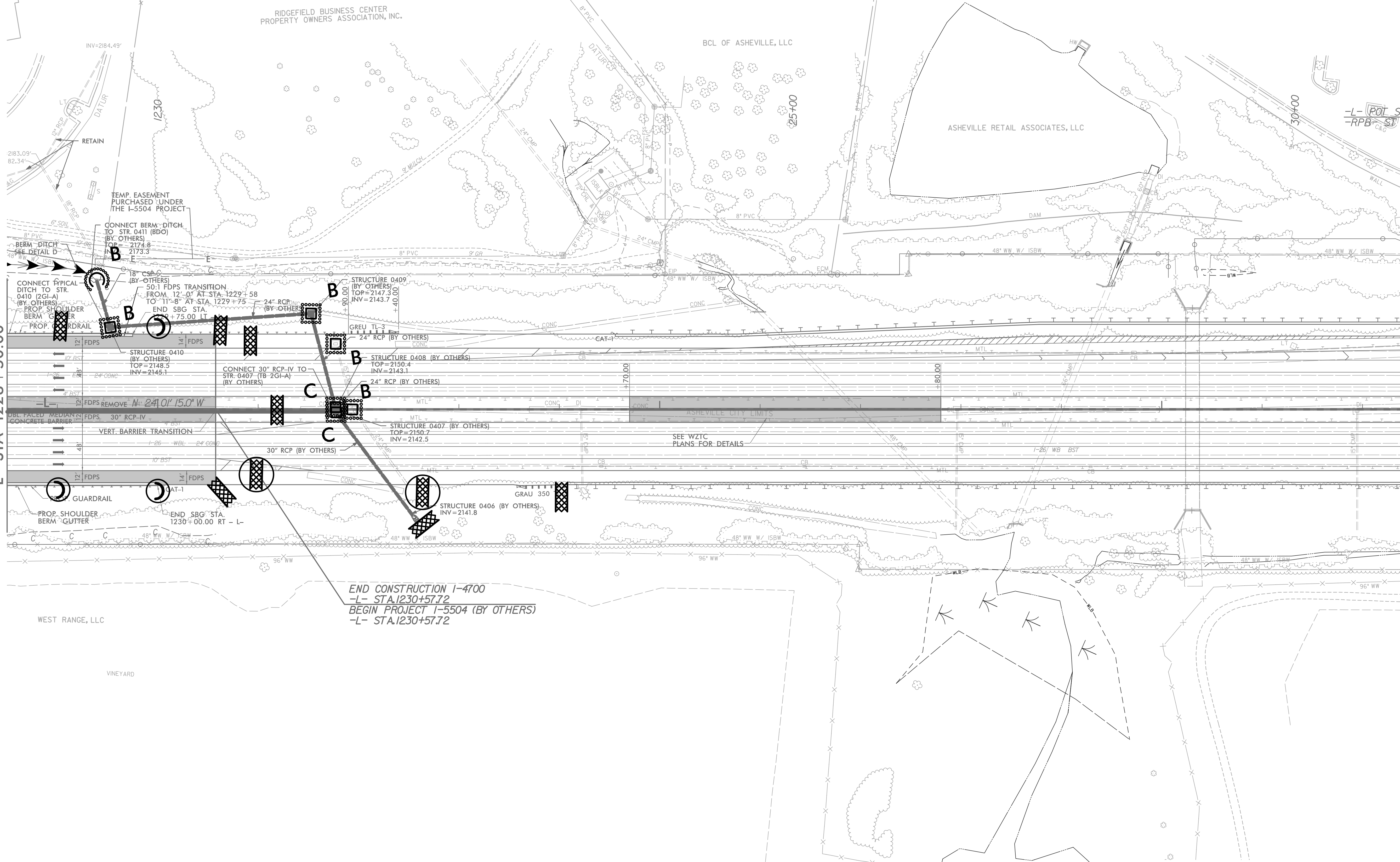
7/19/2017

HNTB HNTB NORTH CAROLINA, P.C.  
345 W. 5th Street, Suite 300  
Raleigh, North Carolina 27609  
NC License No. 21154

PROJECT REFERENCE NO.	SHEET NO.
I-4700	EC-66/CONST.34
RW SHEET NO.	I-4700B-44
ROADWAY DESIGN ENGINEER	HYDRAULICS ENGINEER



MATCHLINE SHEET 33  
-L- STA 1228+50.00



END CONSTRUCTION I-4700  
-L- STA.1230+57.72  
BEGIN PROJECT I-5504 (BY OTHERS)  
-L- STA.1230+57.72

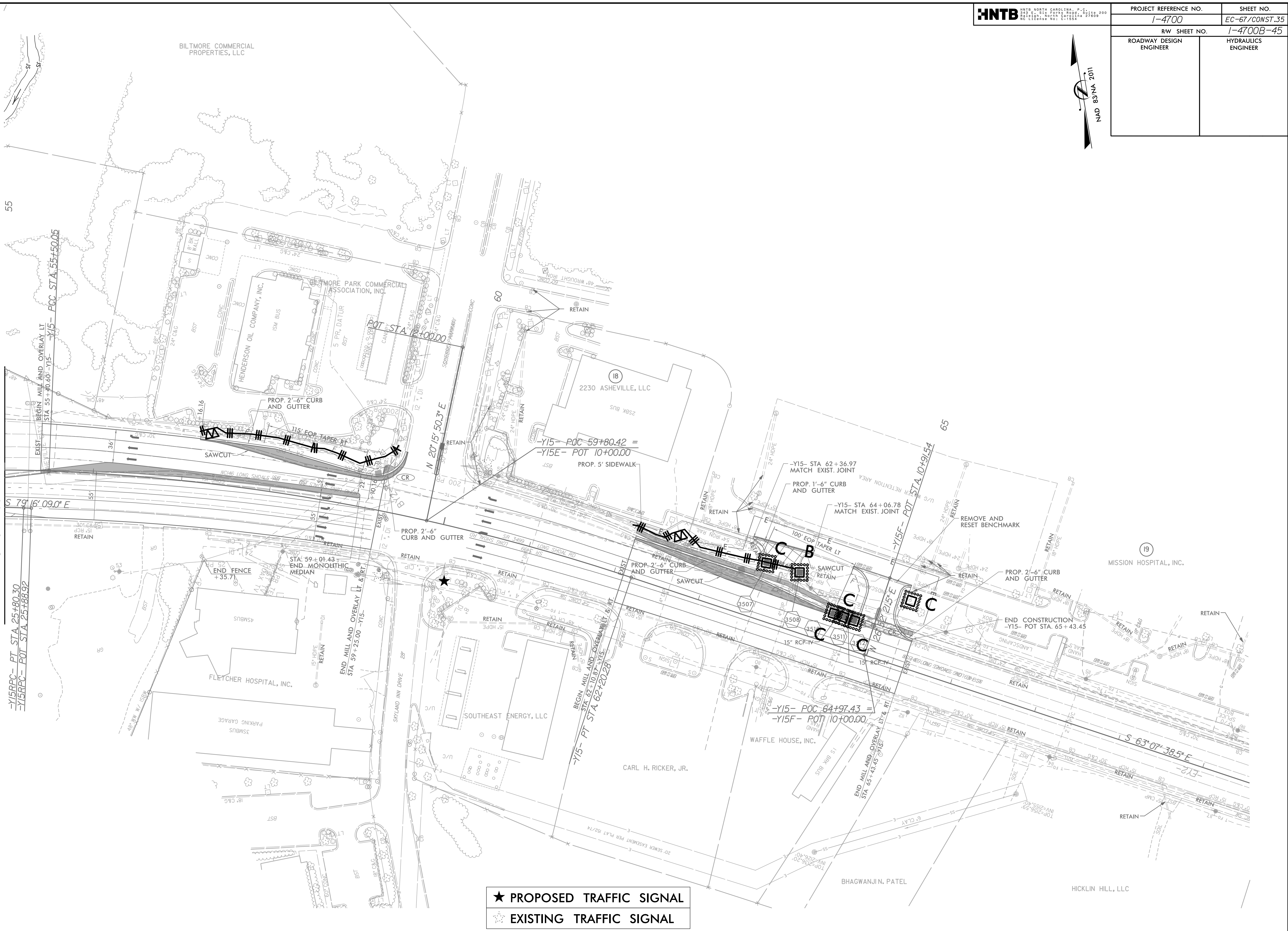
FOR -L- EB & -L- WB PROFILES, SEE SHEETS 62

2/18/2016  
2:\6\ess\design\I-4700B\_EC\_PSH\_34.dgn  
HNTB

PROJECT REFERENCE NO.	SHEET NO.
1-4700	EC-67/CONST.35
RW SHEET NO.	1-4700B-45
ROADWAY DESIGN ENGINEER	HYDRAULICS ENGINEER



MATCHLINE SHEET 17  
-Y15- STA 55+00.00



★ PROPOSED TRAFFIC SIGNAL  
 ☆ EXISTING TRAFFIC SIGNAL