

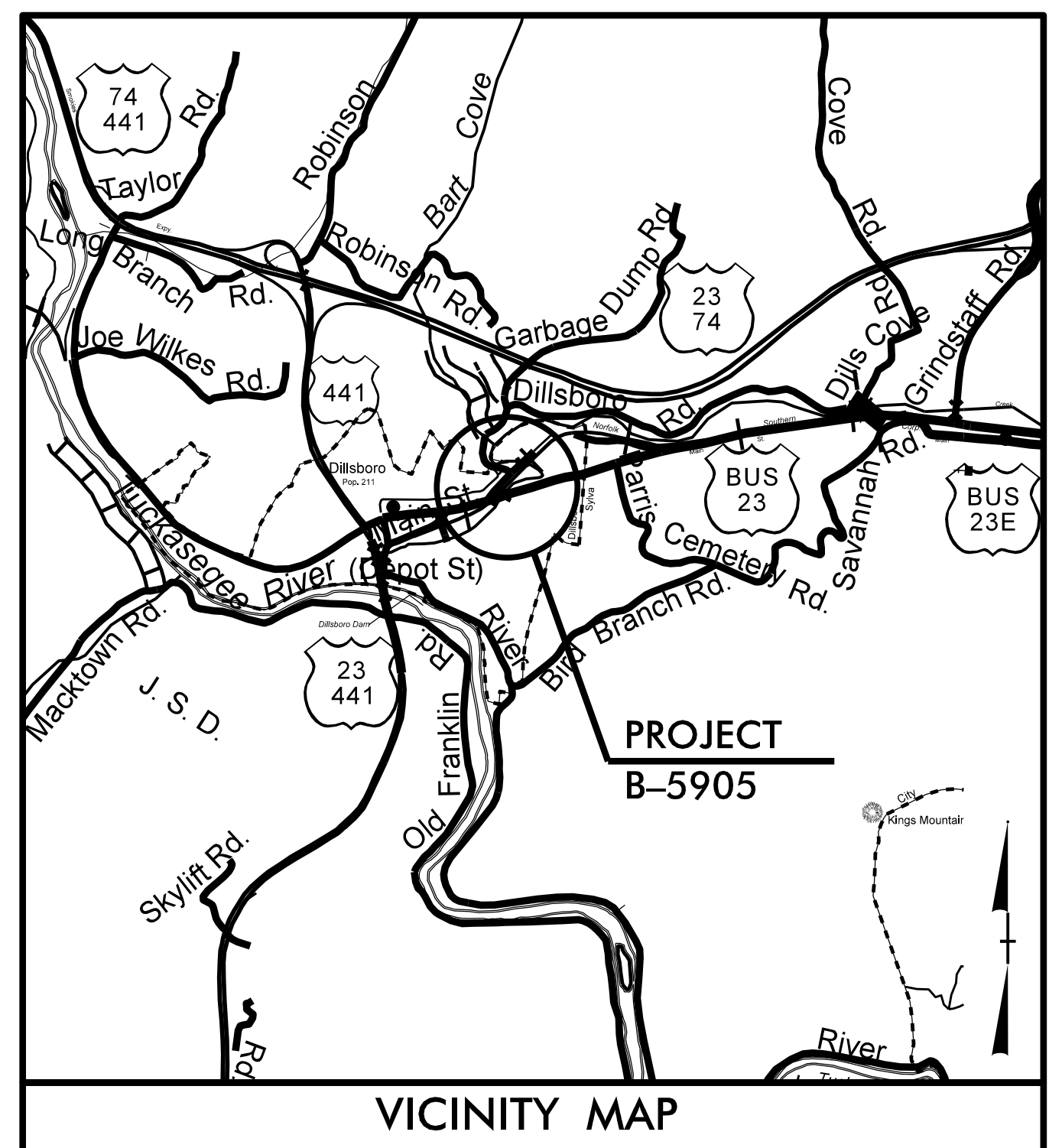
**This electronic collection of documents is provided
for the convenience of the user
and is Not a Certified Document –**

**The documents contained herein were originally issued
and sealed by the individuals whose names and license
numbers appear on each page, on the dates appearing
with their signature on that page.**

**This file or an individual page
shall not be considered a certified document.**

09, 08/99

TIP PROJECT: B-5905



STATE OF NORTH CAROLINA
DIVISION OF HIGHWAYS

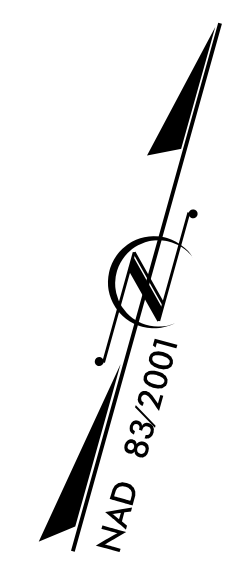
UTILITIES BY OTHERS PLANS JACKSON COUNTY

LOCATION: BRIDGE 27 OVER SCOTT CREEK AND SOUTHERN RAILROAD ON US 23 BUSINESS

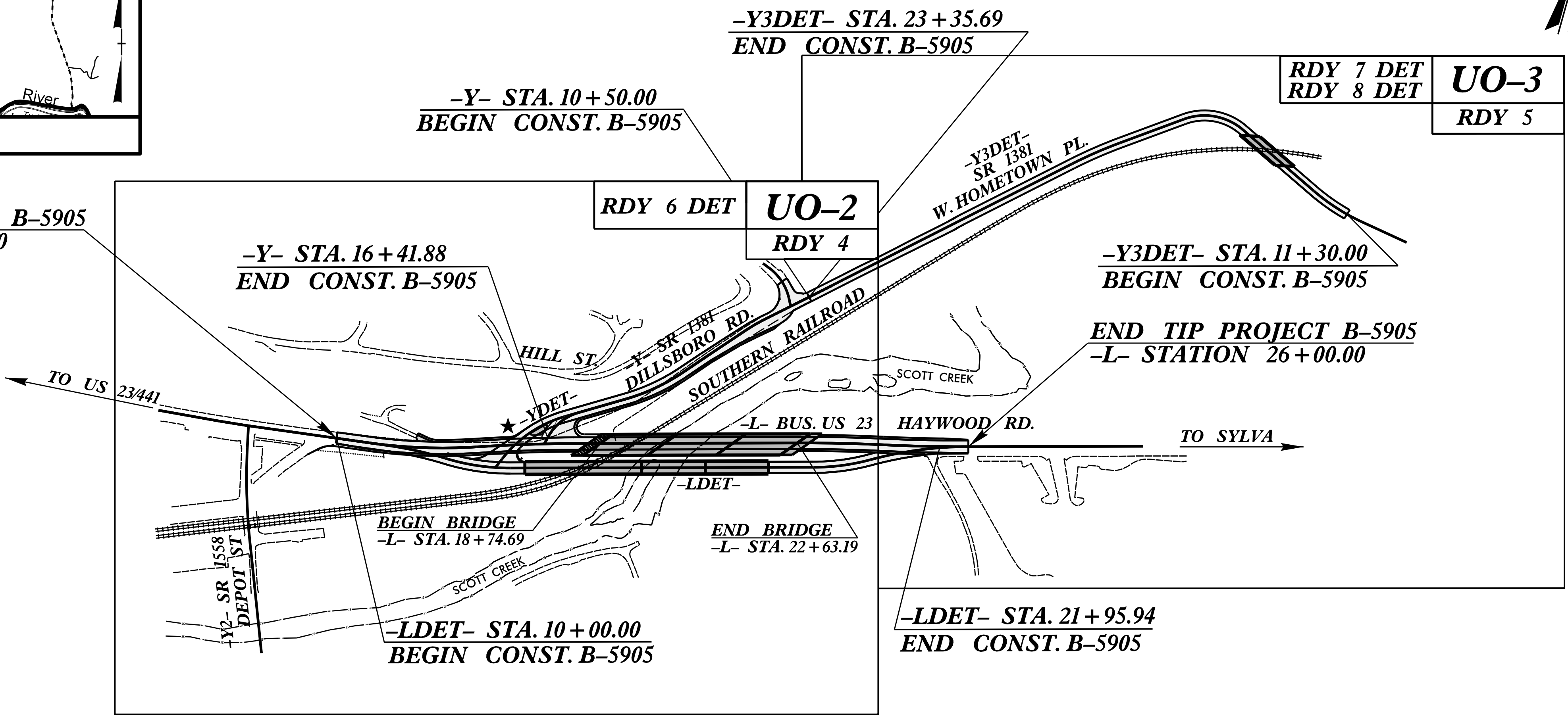
TYPE OF WORK: POWER, TELEPHONE, CABLE TV AND WATER RELOCATION

T.I.P. NO.	SHEET NO.
B-5905	UO-1

NOTE:
ALL UTILITY WORK SHOWN ON THIS SHEET WILL BE DONE BY OTHERS. NO PAYMENT WILL BE MADE TO THE CONTRACTOR FOR UTILITY WORK SHOWN ON THIS SHEET.

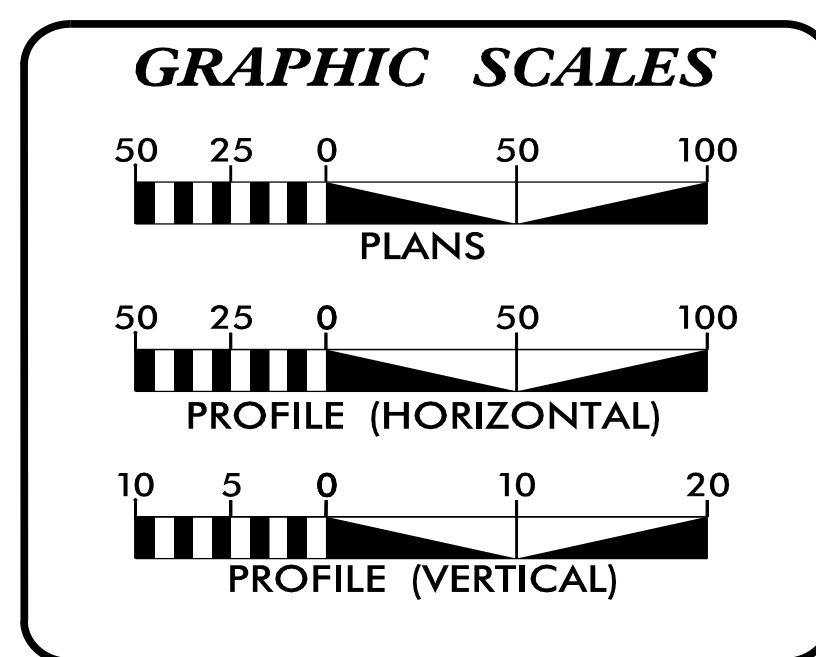


BEGIN TIP PROJECT B-5905
-L- STATION 13+55.00



THIS PROJECT IS WITHIN THE MUNICIPAL BOUNDARIES OF DILLSBORO
CLEARING ON THIS PROJECT SHALL BE PERFORMED TO THE LIMITS ESTABLISHED BY METHOD II

PRELIMINARY PLANS
DO NOT USE FOR CONSTRUCTION



INDEX OF SHEETS

SHEET NO.:	DESCRIPTION:
UO-1	TITLE SHEET
UO-2 - UO-3	UBO PLAN SHEETS
UO-2 DET - UO-4 DET	UBO DETOUR SHEETS

UTILITY OWNERS WITH CONFLICTS

(A) POWER DISTRIBUTION - DUKE ENERGY
(B) COMMUNICATIONS - FRONTIER
(C) COMMUNICATIONS - MORRIS BROADBAND
(D) GAS - PSNC
(E) WATER- TUCKASEIGEE WATER AND SEWER AUTHORITY (TWSA)

PREPARED IN THE OFFICE OF:

Michael Baker
INTERNATIONAL

Michael Baker Engineering, Inc.
8000 Regency Parkway, Suite 600
Cary, NC 27518
919-463-5488

Brandy Creech PROJECT UTILITY COORDINATOR
Christina Newsome PROJECT UTILITY TECHNICIAN

DIVISION OF HIGHWAYS
UTILITIES UNIT
1555 MAIL SERVICES CENTER
RALEIGH, NC 27699-1555
PHONE (919) 707-6690
FAX (919) 250-4151

Barry D. Mosteller ASSISTANT BRIDGE PROGRAM MANAGER
Bob Golding UTILITIES ENGINEER
Tim Goins, PE VHB PROJECT ENGINEER

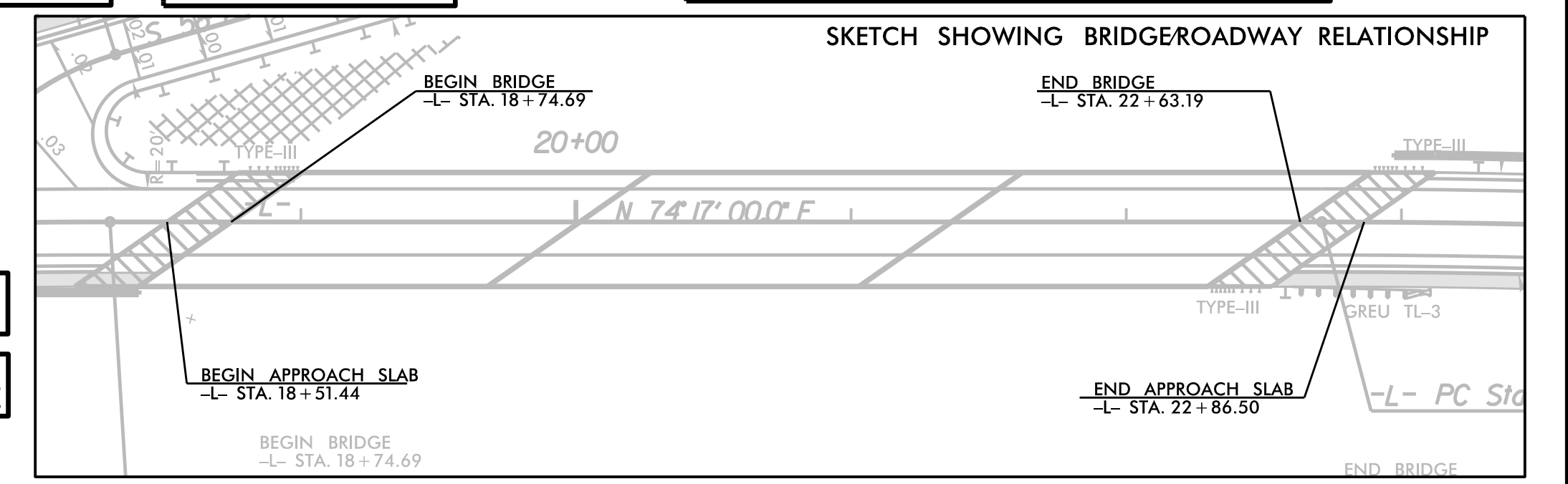
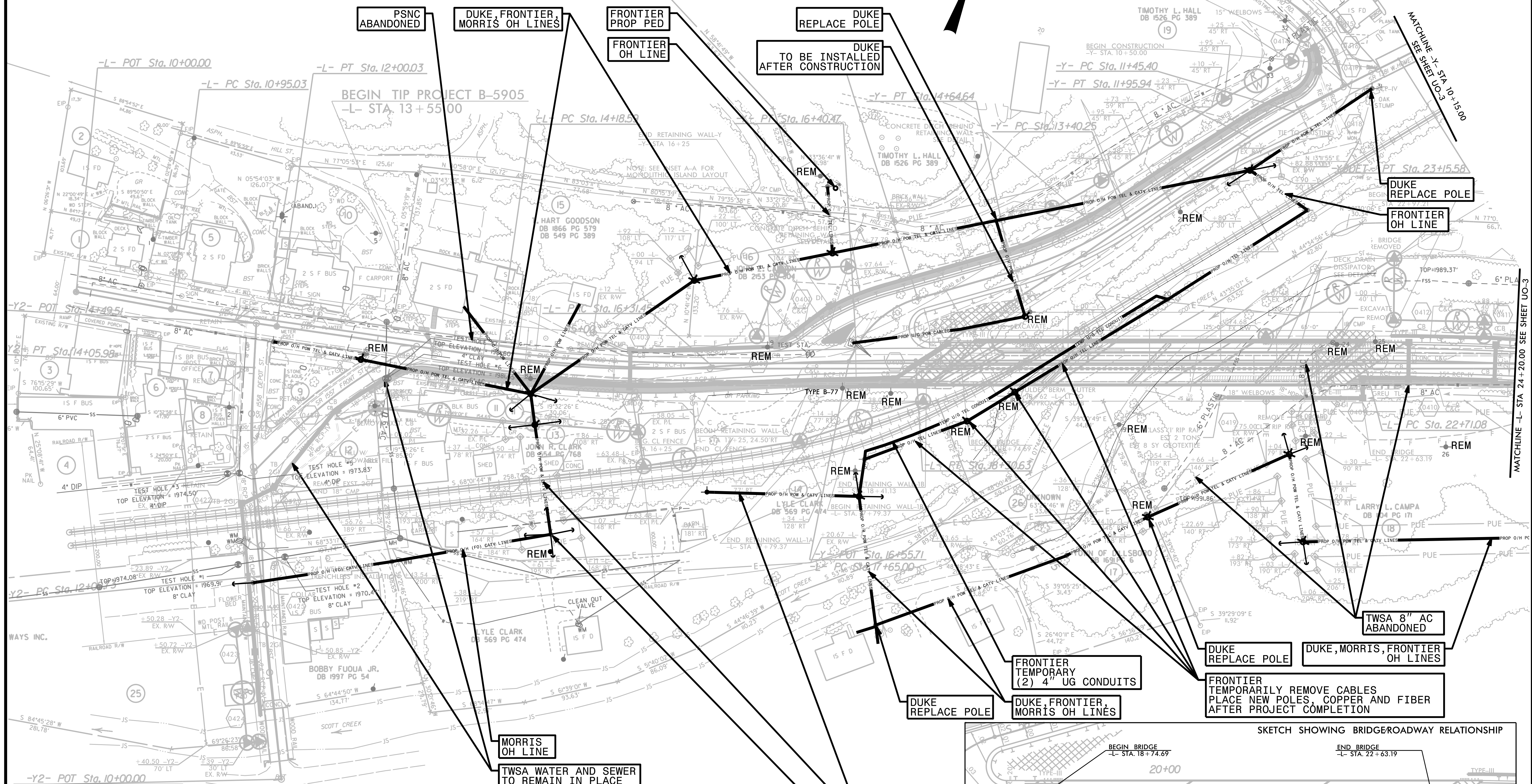
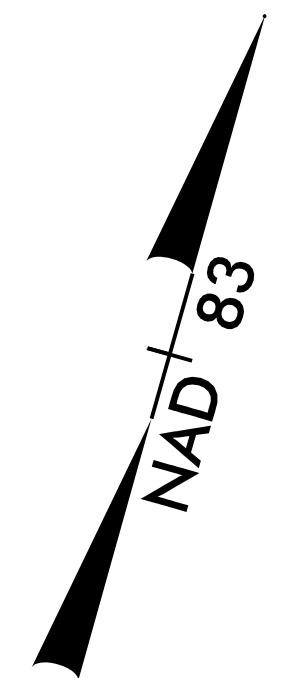
\$\$\$\$\$ SYSTEM \$\$\$\$\$\$
\$\$\$\$\$ DGN \$\$\$\$\$\$
\$\$\$\$\$ USERNAME \$\$\$\$\$\$

UTILITIES BY OTHERS

ALL PROPOSED UTILITY WORK SHOWN ON THIS SHEET WILL BE DONE BY OTHERS. NO PAYMENT WILL BE MADE TO THE CONTRACTOR FOR PROPOSED UTILITY WORK SHOWN ON THIS SHEET.

- UTILITY OWNERS**
- DUKE ENERGY CORPORATION
1020 W. CHATHAM ST.
CARY, N.C. 27518
 - FRONTIER COMMUNICATIONS
84 ALLEN STREET
SYLVA, N.C. 28779
 - TUCKASEEGEE WATER & SEWER
1246 W. MAIN ST.
SYLVA, N.C. 28779
 - MORRIS BROADBAND
1134 SKYLAND DR.
SYLVA, N.C. 28779

-Y- POT Sta. 10+50.00 AH
BEGIN CONSTRUCTION
-Y3 DET - POT Sta. 23+35.69
END CONSTRUCTION
-Y1- POT Sta. 10+00.00



Michael Baker INTERNATIONAL
Michael Baker Engineering, Inc.
8000 Regency Parkway, Suite 600
Cary, NC 27518
919-463-5488

TWSA CONSTRUCTION OUTSIDE PROJECT LIMITS TO BE COMPLETED PRIOR TO AVAILABILITY



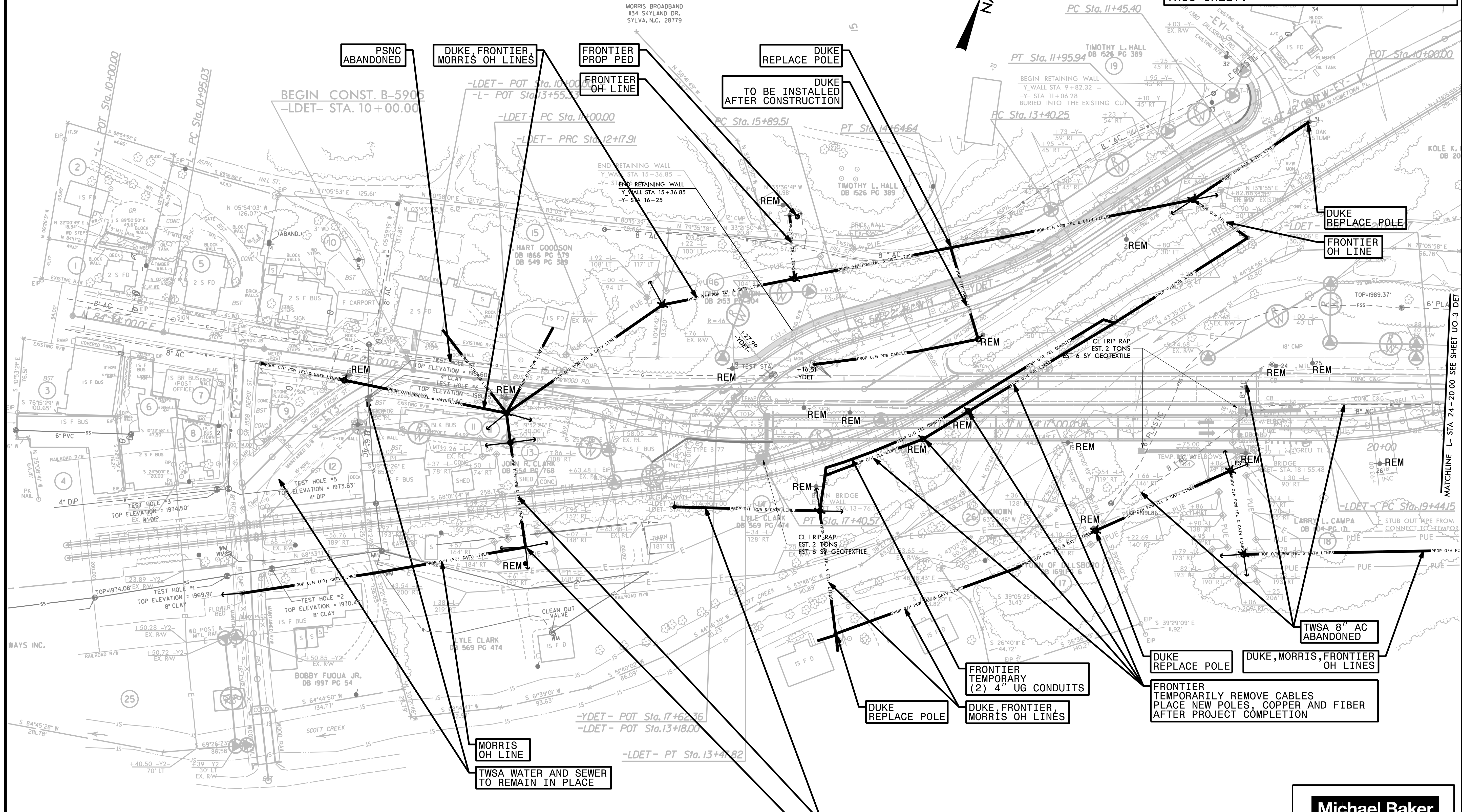
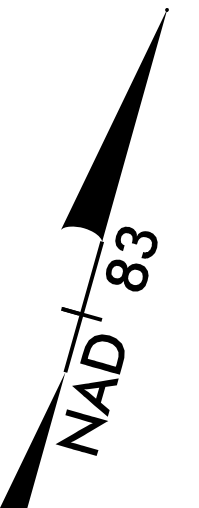
49
48
47
46
45
44
43
42
41
40
39
38
37
36
35
34
33
32
31
30
29
28
27
26
25
24
23
22
21
20
19
18
17
16
15
14
13
12
11
10
9
8
7
6
5
4
3
2
1

-L- DETOUR

UTILITIES BY OTHERS

ALL PROPOSED UTILITY WORK SHOWN ON THIS SHEET WILL BE DONE BY OTHERS. NO PAYMENT WILL BE MADE TO THE CONTRACTOR FOR PROPOSED UTILITY WORK SHOWN ON THIS SHEET.

- UTILITY OWNERS**
- DUKE ENERGY CORPORATION
1020 W. CHATHAM ST.
CARY, N.C. 27511
 - FRONTIER COMMUNICATIONS
84 ALLEN STREET
SYLVA, N.C. 28779
 - TUCKASEEGEE WATER & SEWER
1246 W. MAIN ST.
SYLVA, N.C. 28779
 - MORRIS BROADBAND
1134 SKYLAND DR.
SYLVA, N.C. 28779



TWSA CONSTRUCTION OUTSIDE PROJECT LIMITS TO BE COMPLETED PRIOR TO AVAILABILITY

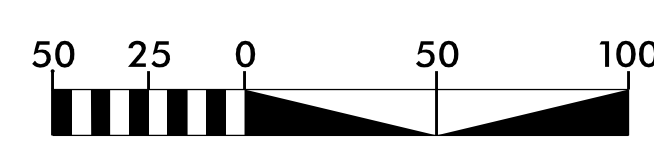
MORRIS OH LINE
TWSA WATER AND SEWER TO REMAIN IN PLACE

FRONTIER TEMPORARY (2) 4" UG CONDUITS
DUKE REPLACE POLE
DUKE, MORRIS, FRONTIER OH LINES

DUKE REPLACE POLE
FRONTIER TEMPORARILY REMOVE CABLES PLACE NEW POLES, COPPER AND FIBER AFTER PROJECT COMPLETION

TWSA 8" AC ABANDONED
DUKE, MORRIS, FRONTIER OH LINES

DUKE, MORRIS OH LINES
DUKE REPLACE POLE



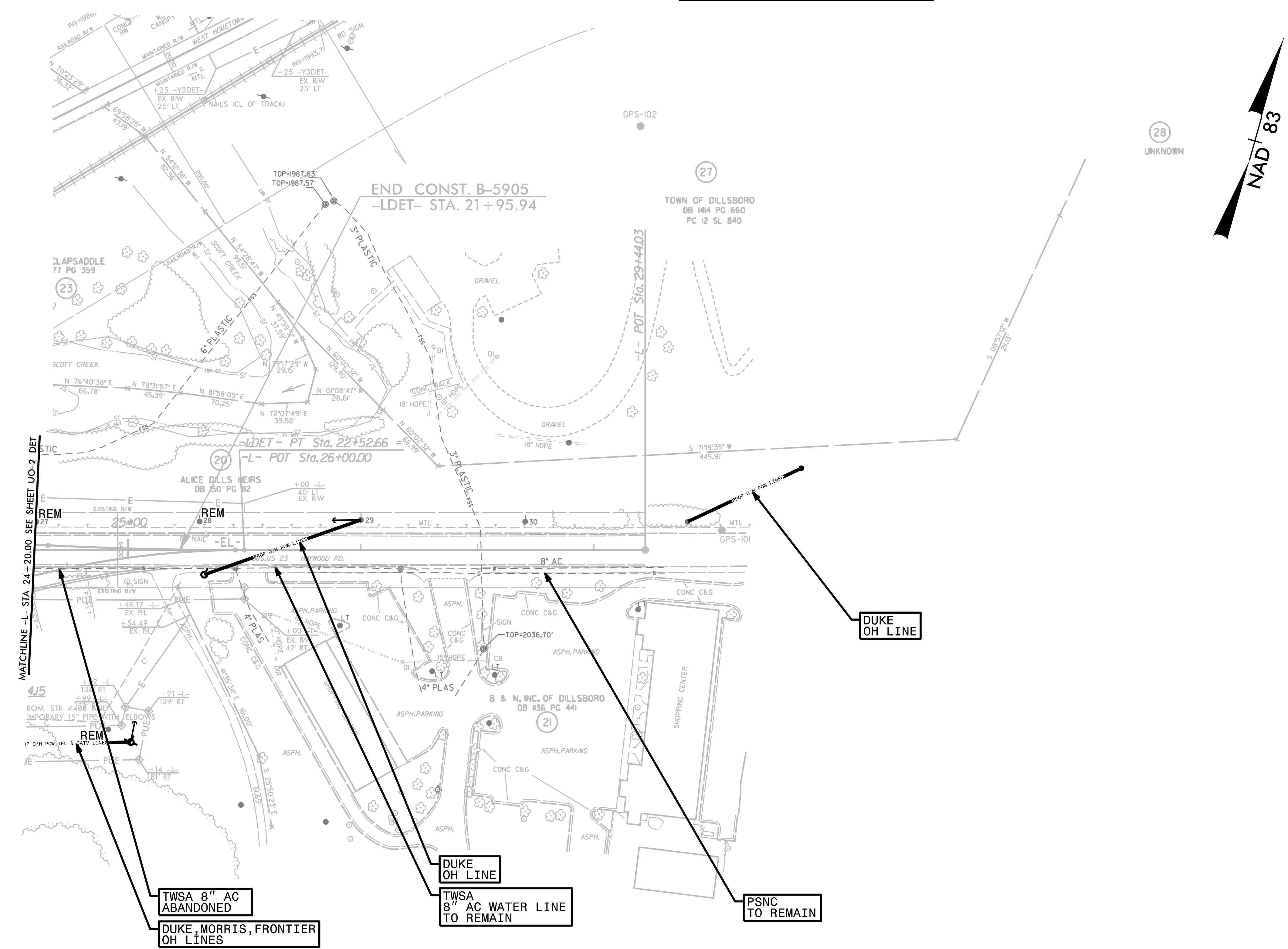
Michael Baker INTERNATIONAL
Michael Baker Engineering, Inc.
8000 Regency Parkway, Suite 600
Cary, NC 27518
919-463-5488

MATCHLINE -L- STA 24+20.00 SEE SHEET UO-3 DET

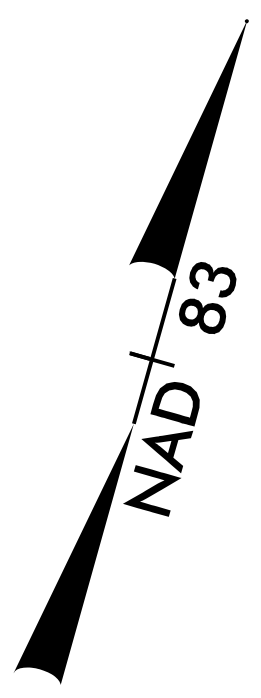
-L- DETOUR

UTILITIES BY OTHERS

ALL PROPOSED UTILITY WORK SHOWN ON THIS SHEET WILL BE DONE BY OTHERS. NO PAYMENT WILL BE MADE TO THE CONTRACTOR FOR PROPOSED UTILITY WORK SHOWN ON THIS SHEET.



MATCHLINE -L- STA. 24+20.00 SEE SHEET UO-2 DET



-LDET-
PI Sta 21+55.42
$\Delta = 14^{\circ} 56' 31.0''$ (RT)
$D = 7^{\circ} 38' 22.0''$
$L = 195.59'$
$T = 98.35'$
$R = 750.00'$



Michael Baker
INTERNATIONAL

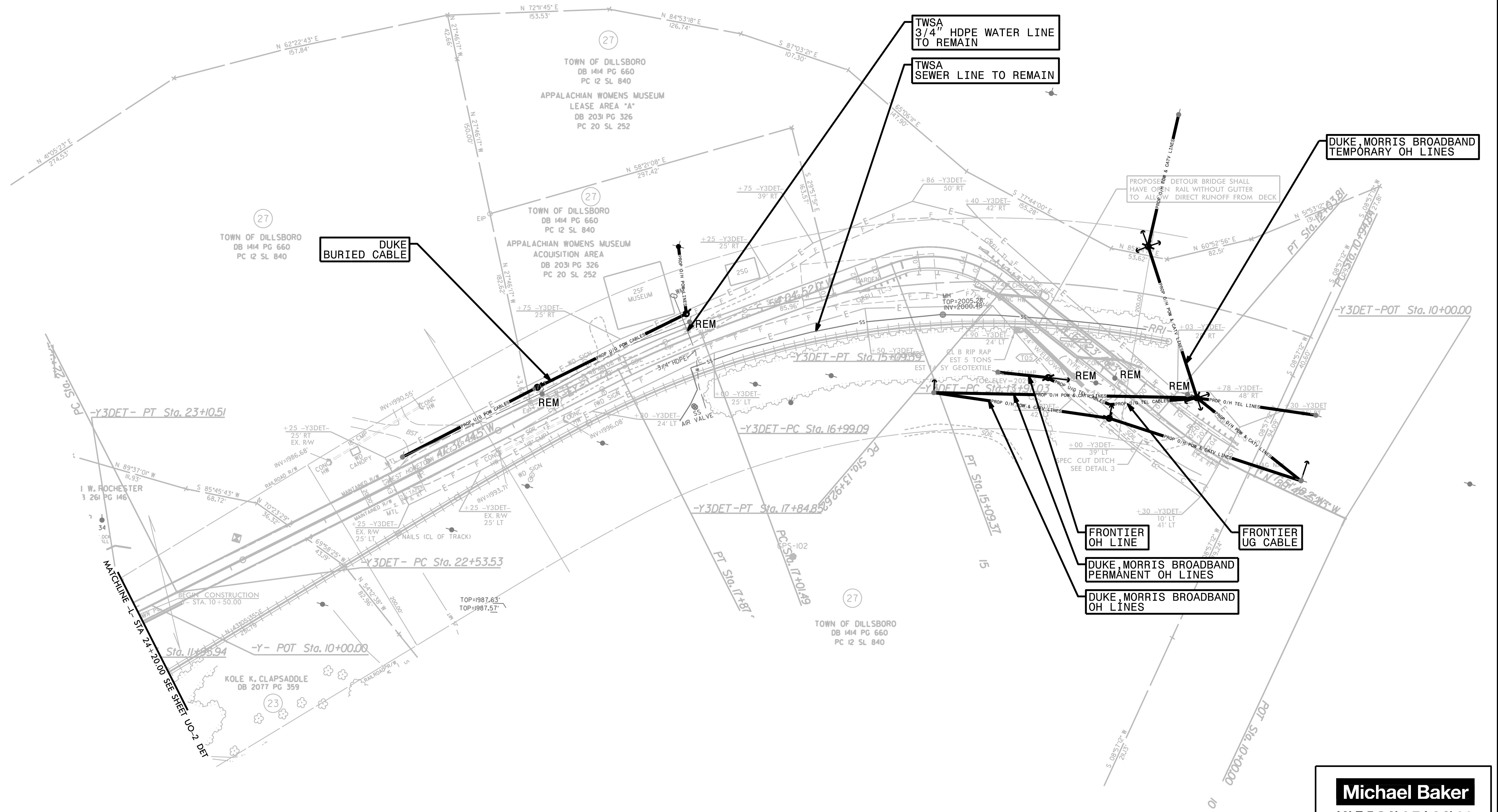
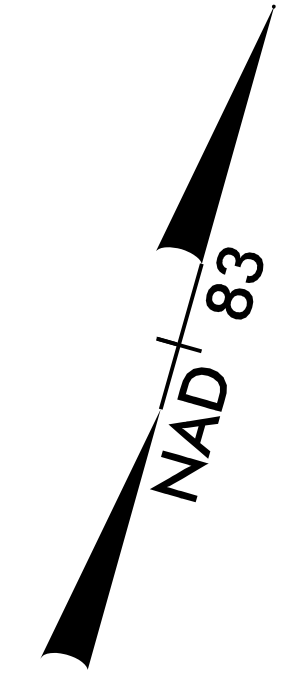
Michael Baker Engineering, Inc.
8000 Regency Parkway, Suite 600
Cary, NC 27518
919-463-5488

SECTION CONDITION

-Y3- DETOUR

UTILITIES BY OTHERS

ALL PROPOSED UTILITY WORK SHOWN ON THIS SHEET WILL BE DONE BY OTHERS. NO PAYMENT WILL BE MADE TO THE CONTRACTOR FOR PROPOSED UTILITY WORK SHOWN ON THIS SHEET.



Michael Baker
INTERNATIONAL

Michael Baker Engineering, Inc.
8000 Regency Parkway, Suite 600
Cary, NC 27518
919-463-5488

C:\STAFF\J\CONDON\B-5905\UO-4 DET\UO-4 DET.dwg
 11/14/2011 10:53:11 AM
 JCONDON