

**This electronic collection of documents is provided
for the convenience of the user
and is Not a Certified Document –**

**The documents contained herein were originally issued
and sealed by the individuals whose names and license
numbers appear on each page, on the dates appearing
with their signature on that page.**

**This file or an individual page
shall not be considered a certified document.**

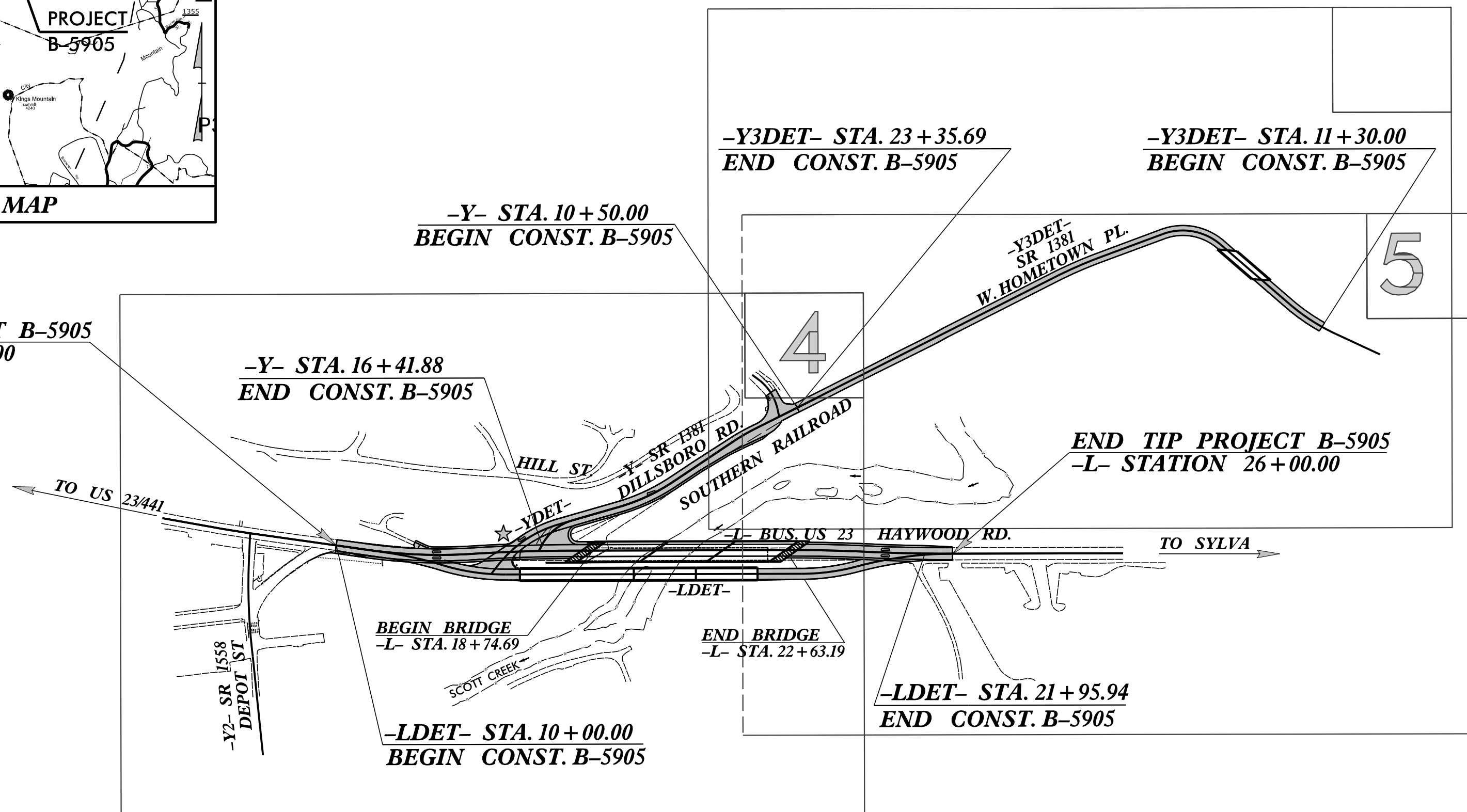
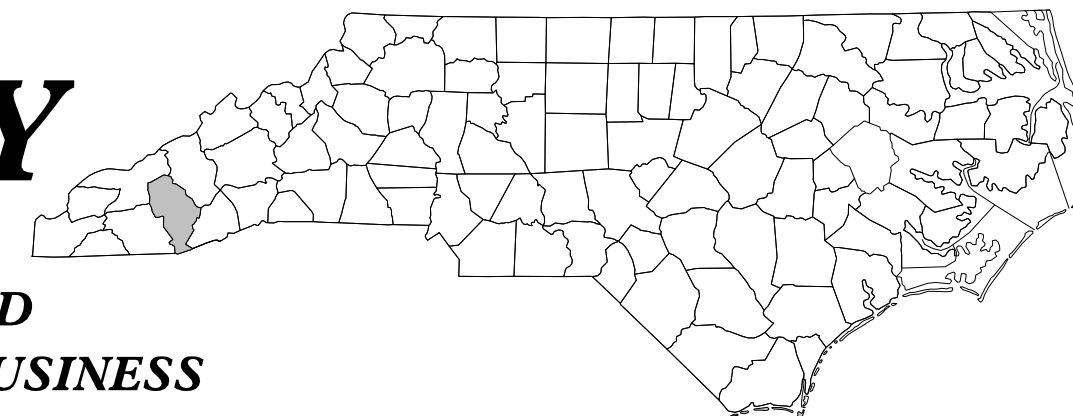
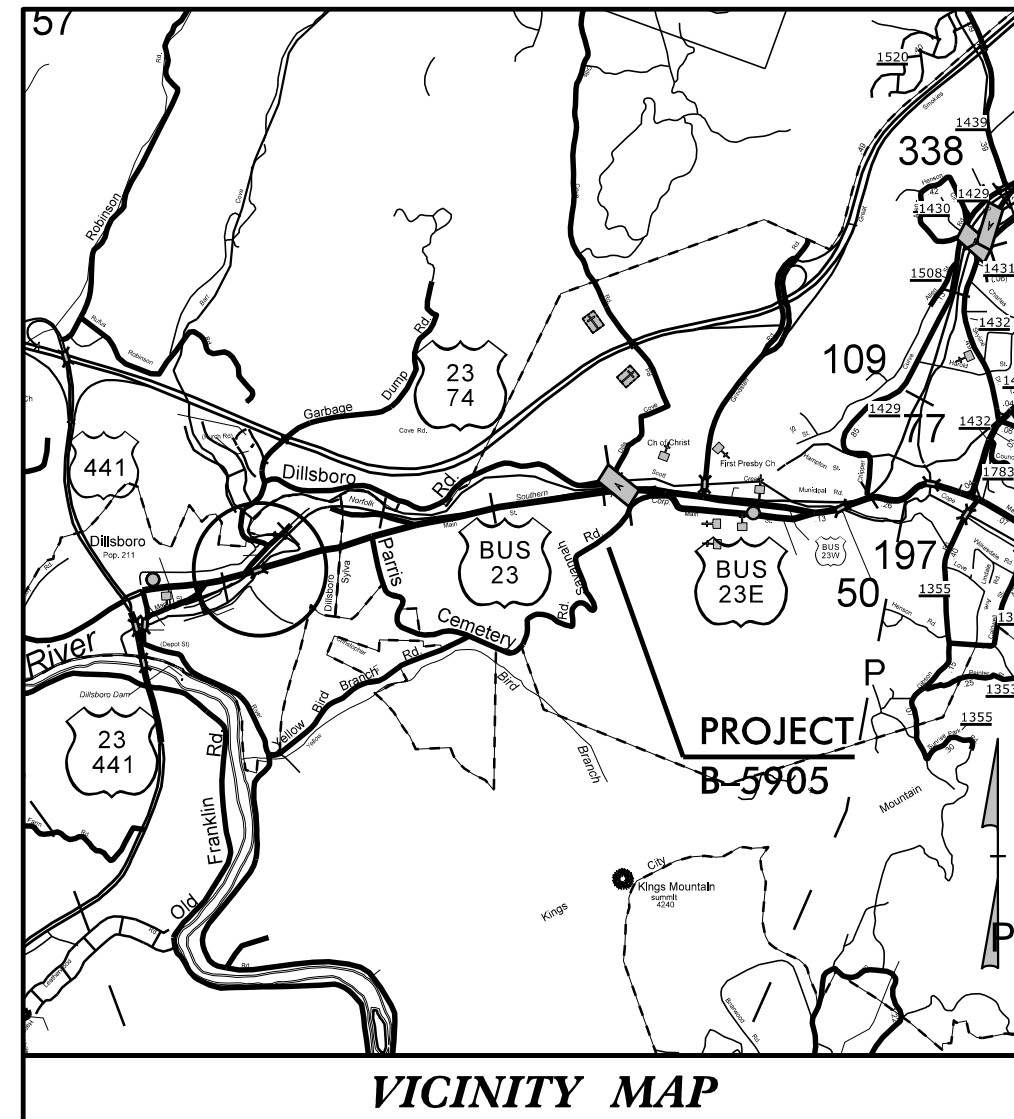
TIP PROJECT: B-5905

2018 STANDARD SPECIFICATIONS
 RIGHT OF WAY DATE:
 JUNE 30, 2017
 LETTING DATE:
 JANUARY 15, 2019

STATE OF NORTH CAROLINA
 DIVISION OF HIGHWAYS
 PLAN FOR PROPOSED
 HIGHWAY EROSION CONTROL
JACKSON COUNTY

LOCATION: BRIDGE 27 OVER SCOTT CREEK AND
 SOUTHERN RAILROAD ON US 23 BUSINESS

TYPE OF WORK: GRADING, DRAINAGE, PAVING AND STRUCTURE



☆ PROPOSED TRAFFIC SIGNAL

STATE	STATE PROJECT REFERENCE NO.	SHEET NO.	TOTAL SHEETS
N.C.	B-5905	EC-1	
STATE PROJ. NO.	F.A. PROJ. NO.	DESCRIPTION	
48037.1.1	BRNHS-0023(28)	P.E.	
48037.2.2	BRNHS-0023(28)	RW & UTILITIES.	
48037.3.3	BRNHS-0023(28)	CONSTRUCTION	

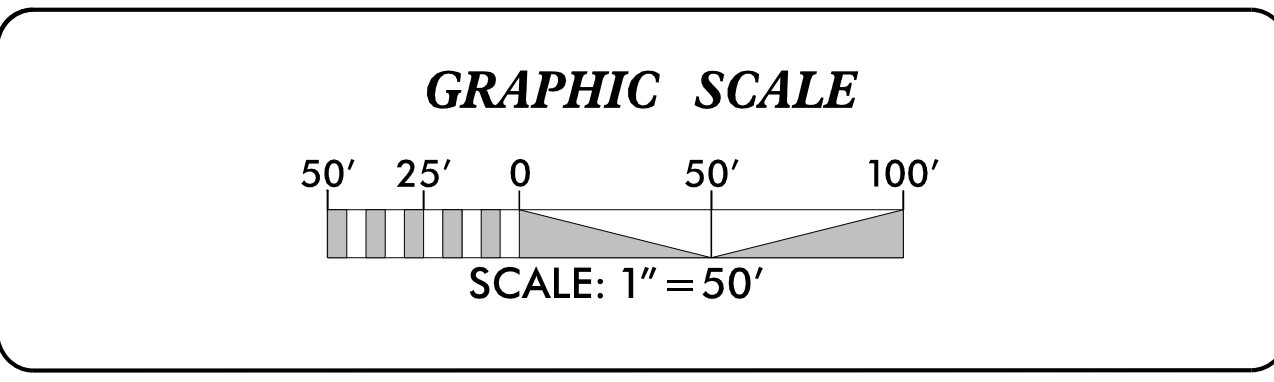
EROSION AND SEDIMENT CONTROL MEASURES

Std. #	Description	Symbol
1630.03	Temporary Silt Ditch	TD
1630.05	Temporary Diversion	TD
1605.01	Temporary Silt Fence	TSF
1606.01	Special Sediment Control Fence	SSCF
1622.01	Temporary Berms and Slope Drains	TBSD
1630.02	Silt Basin Type B	SBSB
1633.01	Temporary Rock Silt Check Type-A	TRSCA
	Temporary Rock Silt Check Type-A with Matting and Polyacrylamide (PAM)	TRSCA-PAM
1633.02	Temporary Rock Silt Check Type-B	TRSCB
	Wattle/Coir Fiber Wattle	WCFW
	Wattle/Coir Fiber Wattle with Polyacrylamide (PAM)	WCFW-PAM
1634.01	Temporary Rock Sediment Dam Type-A	TRSDA
1634.02	Temporary Rock Sediment Dam Type-B	TRSDB
1635.01	Rock Pipe Inlet Sediment Trap Type-A	RPISTRA
1635.02	Rock Pipe Inlet Sediment Trap Type-B	RPISTRB
1630.04	Stilling Basin	SB
1630.06	Special Stilling Basin	SSB
	Rock Inlet Sediment Trap:	
1632.01	Type A	A
1632.02	Type B	B
1632.03	Type C	C
	Skimmer Basin	SKB
	Tiered Skimmer Basin	TSKB
	Infiltration Basin	IB

THIS PROJECT CONTAINS EROSION CONTROL PLANS FOR CLEARING AND GRUBBING PHASE OF CONSTRUCTION.

ENVIRONMENTALLY SENSITIVE AREA(S) EXIST ON THIS PROJECT
 Refer To E. C. Special Provisions for Special Considerations.

THIS PROJECT HAS BEEN DESIGNED TO SENSITIVE WATERSHED STANDARDS.



THESE EROSION AND SEDIMENT CONTROL PLANS COMPLY WITH THE REGULATIONS SET FORTH BY THE NCG-010000 GENERAL CONSTRUCTION PERMIT EFFECTIVE AUGUST 1, 2016 AND ISSUED BY THE NORTH CAROLINA DEPARTMENT OF ENVIRONMENTAL QUALITY DIVISION DEPARTMENT OF WATER RESOURCES.

Prepared in the Office of:
SUNGATE DESIGN GROUP, P.A.
 905 JONES FRANKLIN ROAD
 RALEIGH, NORTH CAROLINA 27606
 TEL (919) 859-2243
 ENG FIRM LICENSE NO. C-890

Designed by:
MATTHEW C. EDWARDS, EI 3992
 NAME LEVEL III CERTIFICATION NO.

Reviewed in the Office of:
ROADSIDE ENVIRONMENTAL UNIT
 1 South Wilmington St.
 Raleigh, NC 27611

2018 STANDARD SPECIFICATIONS

Reviewed by:
REID WHITEHEAD, PE, CPESC

Roadway Standard Drawings

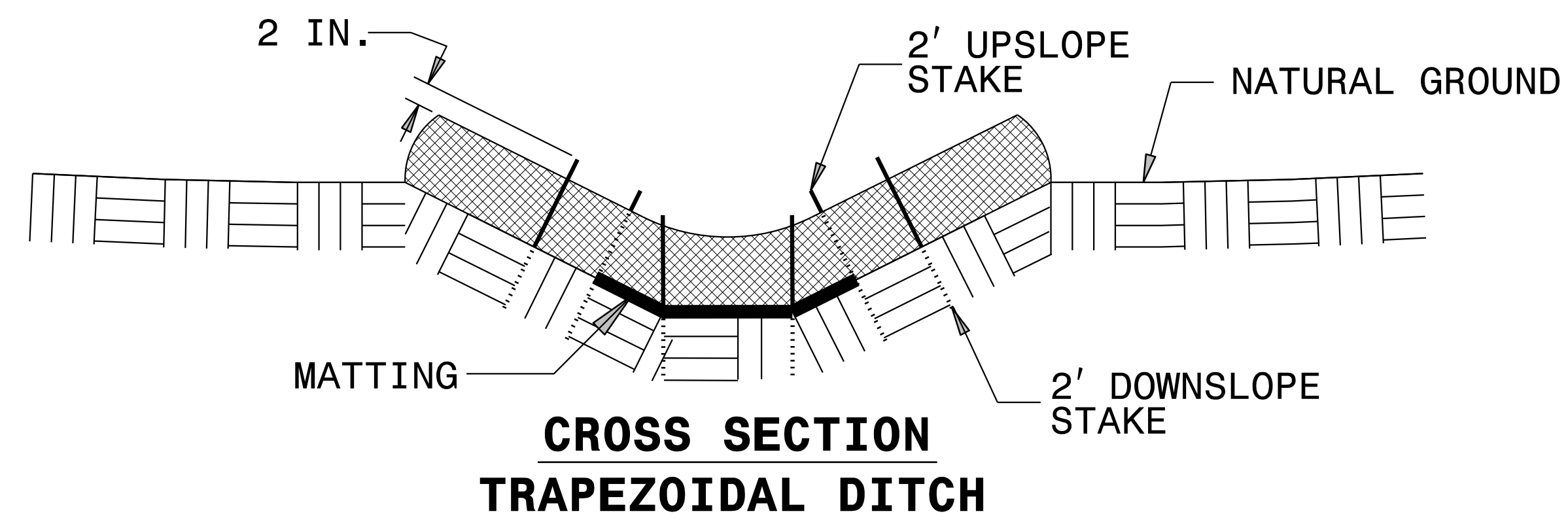
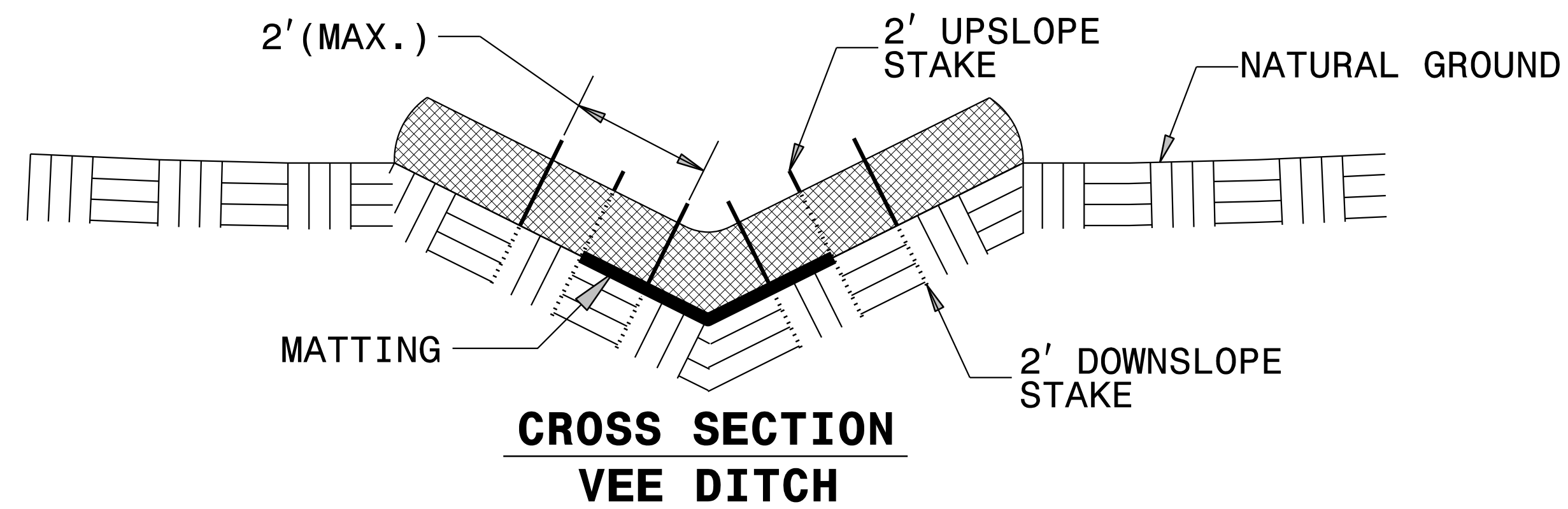
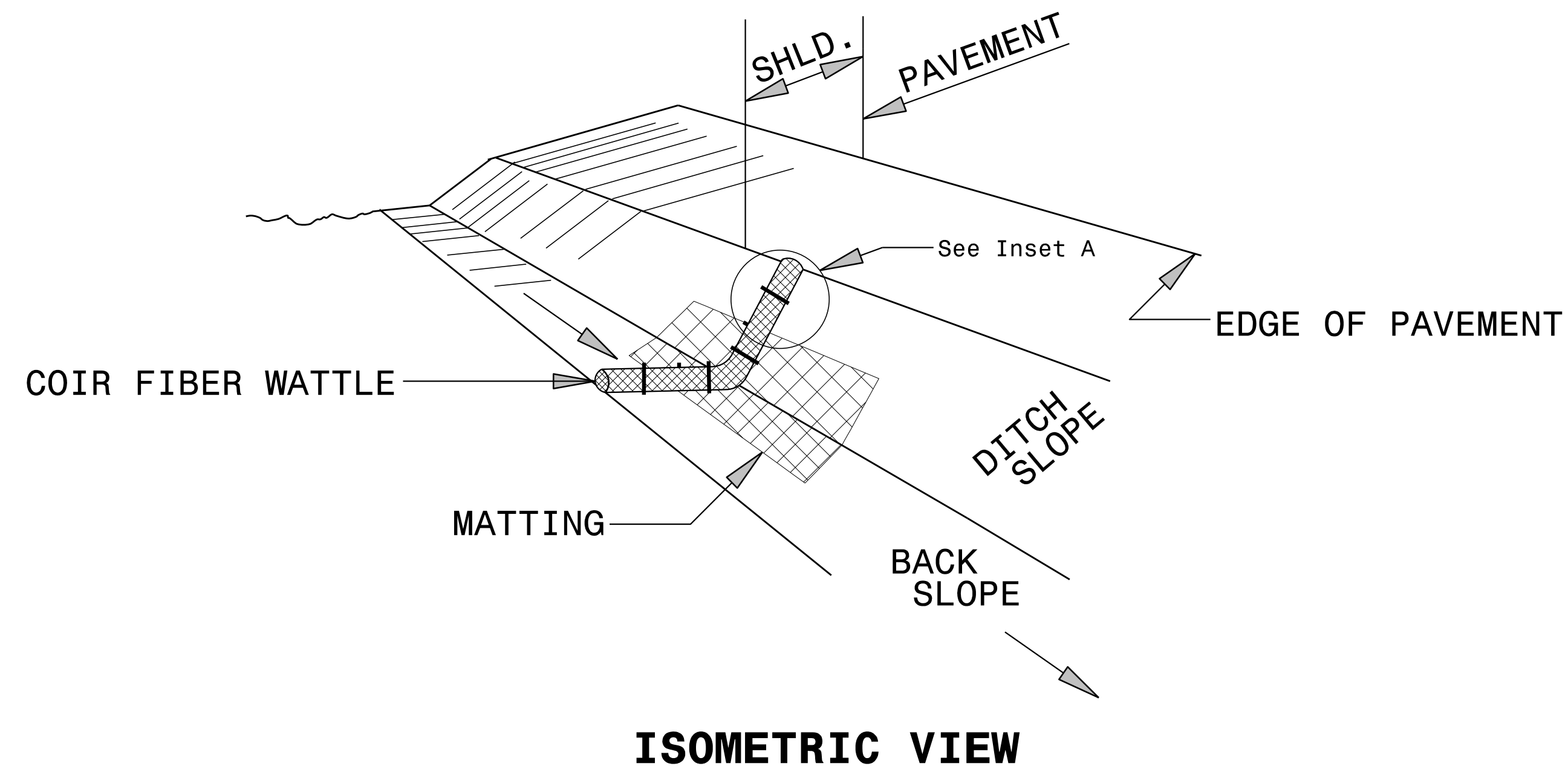
The following roadway english standards as appear in "Roadway Standard Drawings"- Roadway Design Unit - N. C. Department of Transportation - Raleigh, N. C., dated January 2018 and the latest revision thereto are applicable to this project and by reference hereby are considered a part of these plans.

1604.01	Railroad Erosion Control Detail	1632.01	Rock Inlet Sediment Trap Type A
1605.01	Temporary Silt Fence	1632.02	Rock Inlet Sediment Trap Type B
1606.01	Special Sediment Control Fence	1632.03	Rock Inlet Sediment Trap Type C
1607.01	Gravel Construction Entrance	1633.01	Temporary Rock Silt Check Type A
1622.01	Temporary Berms and Slope Drains	1633.02	Temporary Rock Silt Check Type B
1630.01	Riser Basin	1634.01	Temporary Rock Sediment Dam Type A
1630.02	Silt Basin Type B	1634.02	Temporary Rock Sediment Dam Type B
1630.03	Temporary Silt Ditch	1635.01	Rock Pipe Inlet Sediment Trap Type A
1630.04	Stilling Basin	1635.02	Rock Pipe Inlet Sediment Trap Type B
1630.05	Temporary Diversion	1640.01	Coir Fiber Baffle
1630.06	Special Stilling Basin	1645.01	Temporary Stream Crossing
1631.01	Matting Installation		

11/21/2018 EC_dsn_psh_01.dgn

PROJECT REFERENCE NO. B-5905	SHEET NO. EC-2
RW SHEET NO.	
ROADWAY DESIGN ENGINEER	HYDRAULICS ENGINEER

COIR FIBER WATTLE DETAIL



NOTES:

USE MINIMUM 12 IN. DIAMETER COIR FIBER (COCONUT FIBER) WATTLE.

USE 2 FT. WOODEN STAKES WITH A 2 IN. BY 2 IN. NOMINAL CROSS SECTION.

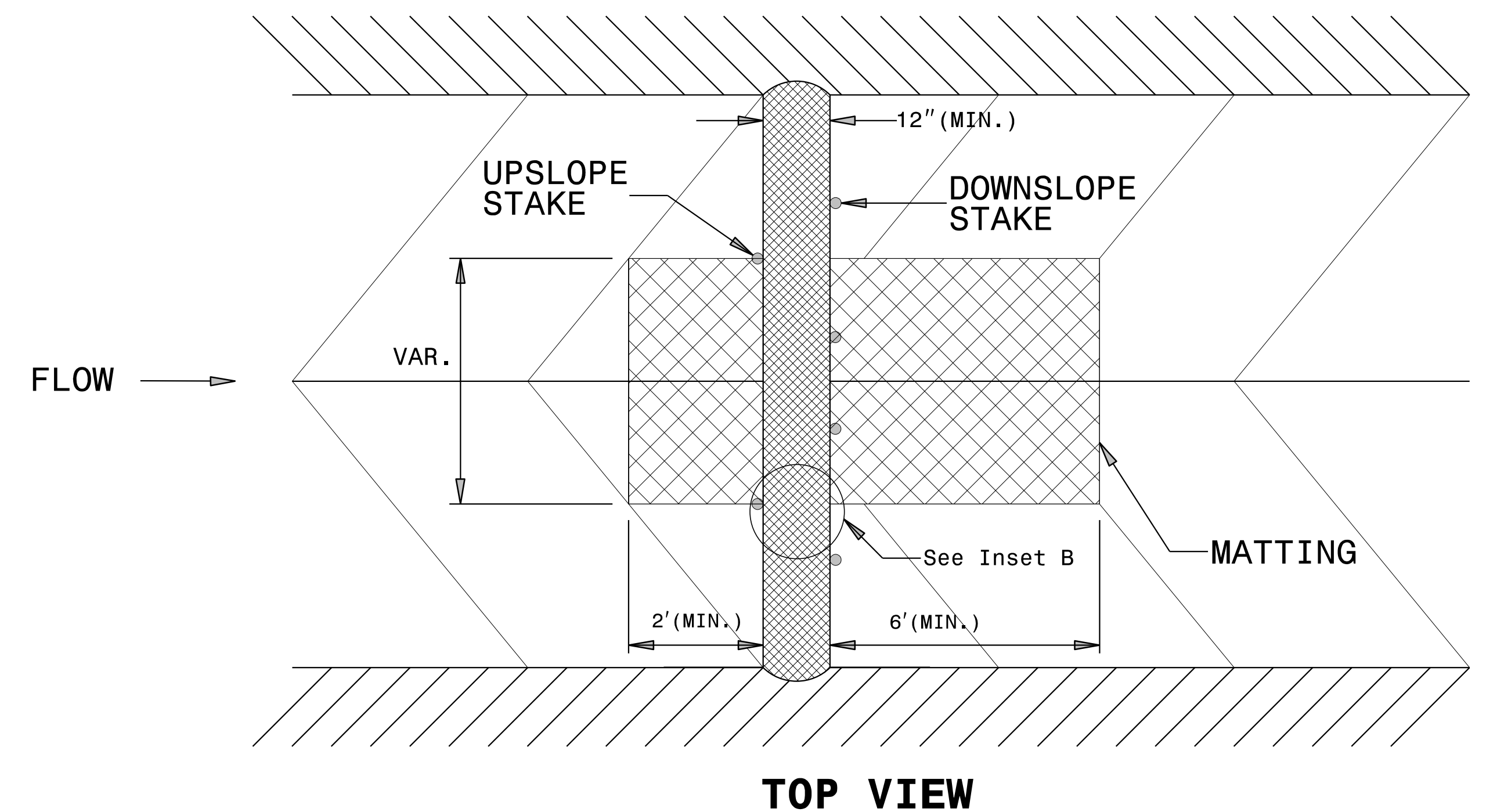
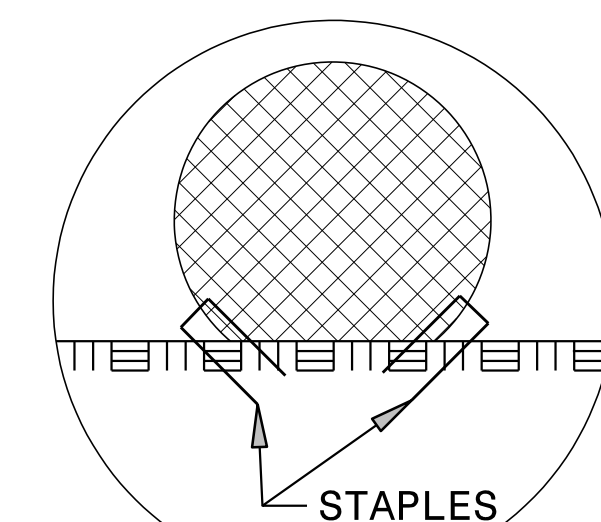
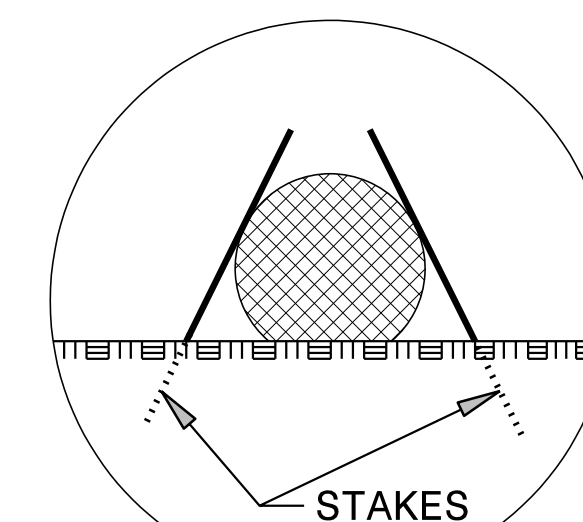
ONLY INSTALL WATTLE(S) TO A HEIGHT IN DITCH SO FLOW WILL NOT WASH AROUND WATTLE AND SCOUR DITCH SLOPES AND AS DIRECTED.

INSTALL A MINIMUM OF 2 UPSLOPE STAKES AND 4 DOWNSLOPE STAKES AT AN ANGLE TO WEDGE WATTLE TO BOTTOM OF DITCH.

PROVIDE STAPLES MADE OF 0.125 IN. DIAMETER STEEL WIRE FORMED INTO A U SHAPE NOT LESS THAN 12" IN LENGTH.

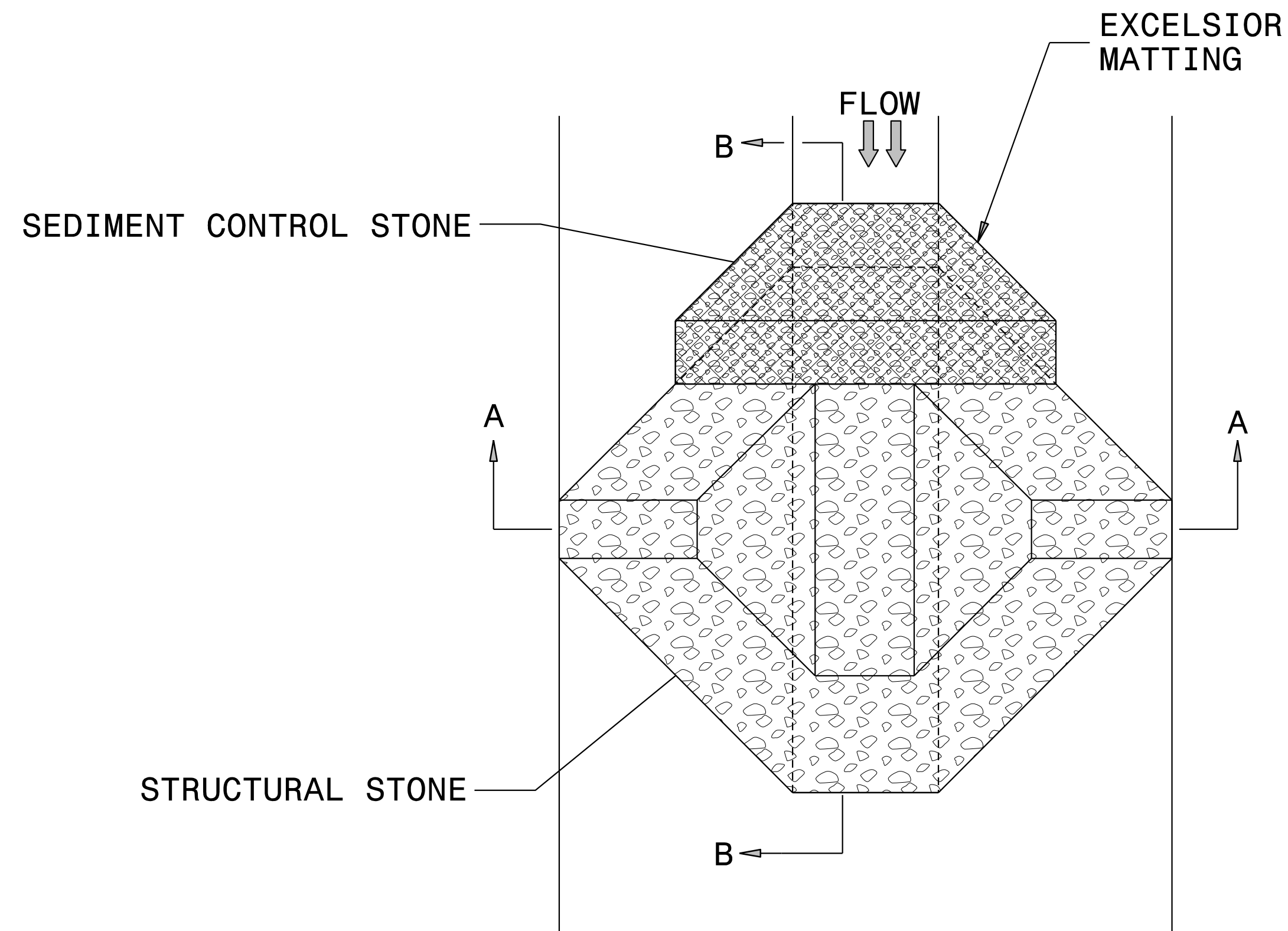
INSTALL STAPLES APPROXIMATELY EVERY 1 LINEAR FOOT ON BOTH SIDES OF WATTLE AND AT EACH END TO SECURE IT TO THE SOIL.

INSTALL MATTING IN ACCORDANCE WITH SECTION 1631 OF THE STANDARD SPECIFICATIONS.

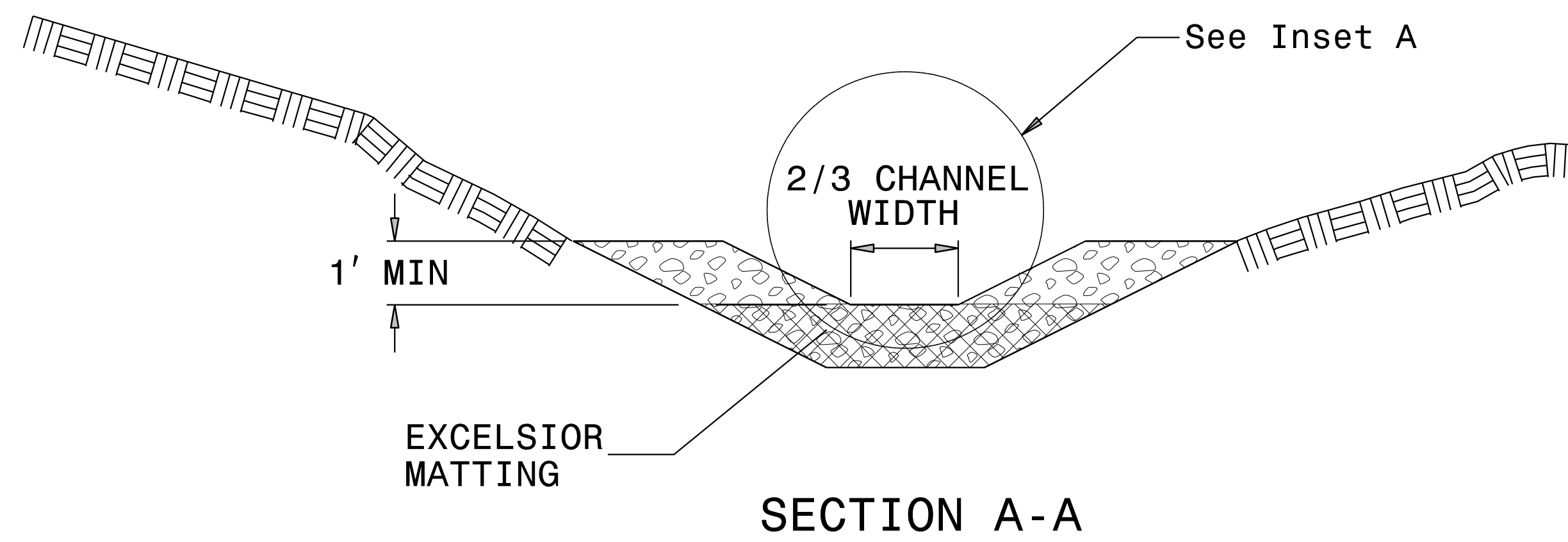


PROJECT REFERENCE NO. B-5905	SHEET NO. EC-2A
RW SHEET NO.	
ROADWAY DESIGN ENGINEER	HYDRAULICS ENGINEER

TEMPORARY ROCK SILT CHECK TYPE 'A' WITH EXCELSIOR MATTING AND POLYACRYLAMIDE (PAM)



PLAN



SECTION A-A

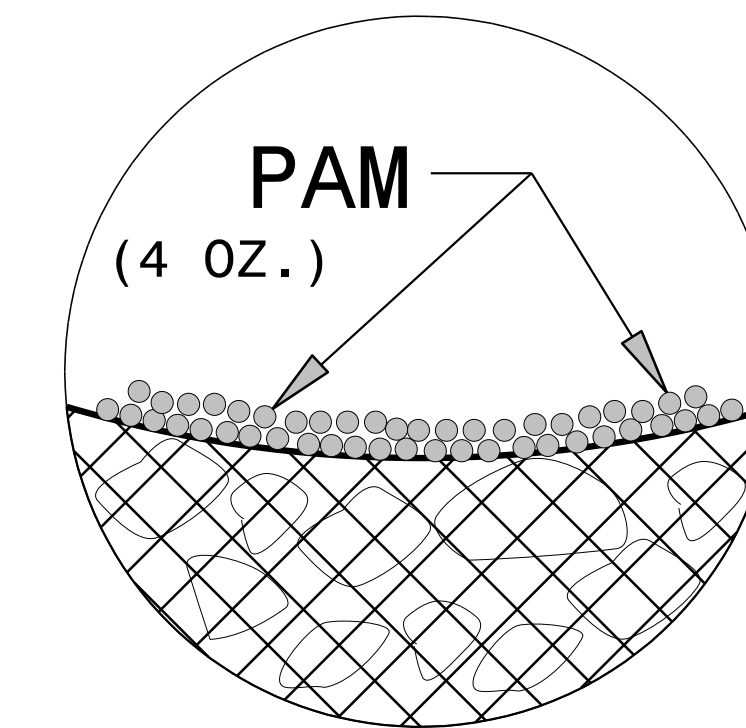
NOTES:

INSTALL TEMPORARY ROCK SILT CHECK TYPE A IN ACCORDANCE WITH ROADWAY STANDARD DRAWING NO. 1633.01.

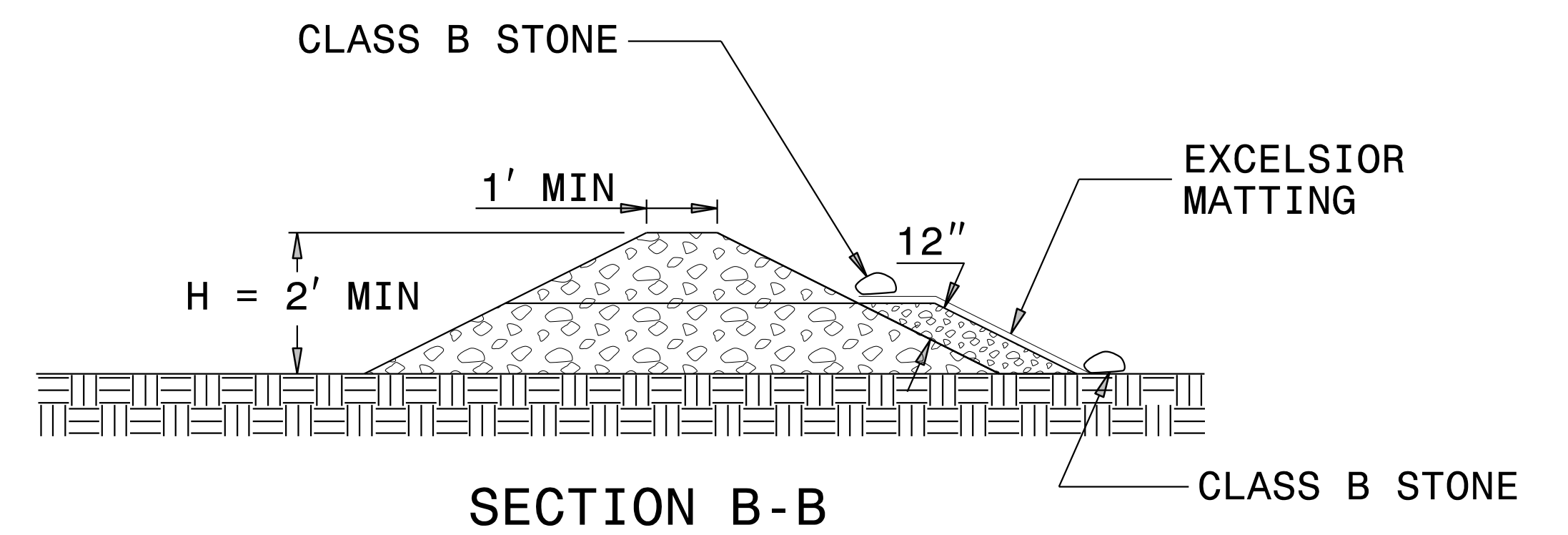
USE EXCELSIOR FOR MATTING MATERIAL AND ANCHOR MATTING SECTION AT TOP AND BOTTOM WITH CLASS B STONE.

PRIOR TO POLYACRYLAMIDE (PAM) APPLICATION, OBTAIN A SOIL SAMPLE FROM PROJECT LOCATION, AND FROM OFFSITE MATERIAL, AND ANALYZE FOR APPROPRIATE PAM FLOCCULANT TO BE APPLIED TO EACH ROCK SILT CHECK.

INITIALLY APPLY 4 OUNCES OF POLYACRYLAMIDE (PAM) TO TOP OF MATTING SECTION AND AFTER EVERY RAINFALL EVENT THAT EQUALS OR EXCEEDS 0.50 INCHES.



INSET A



SECTION B-B

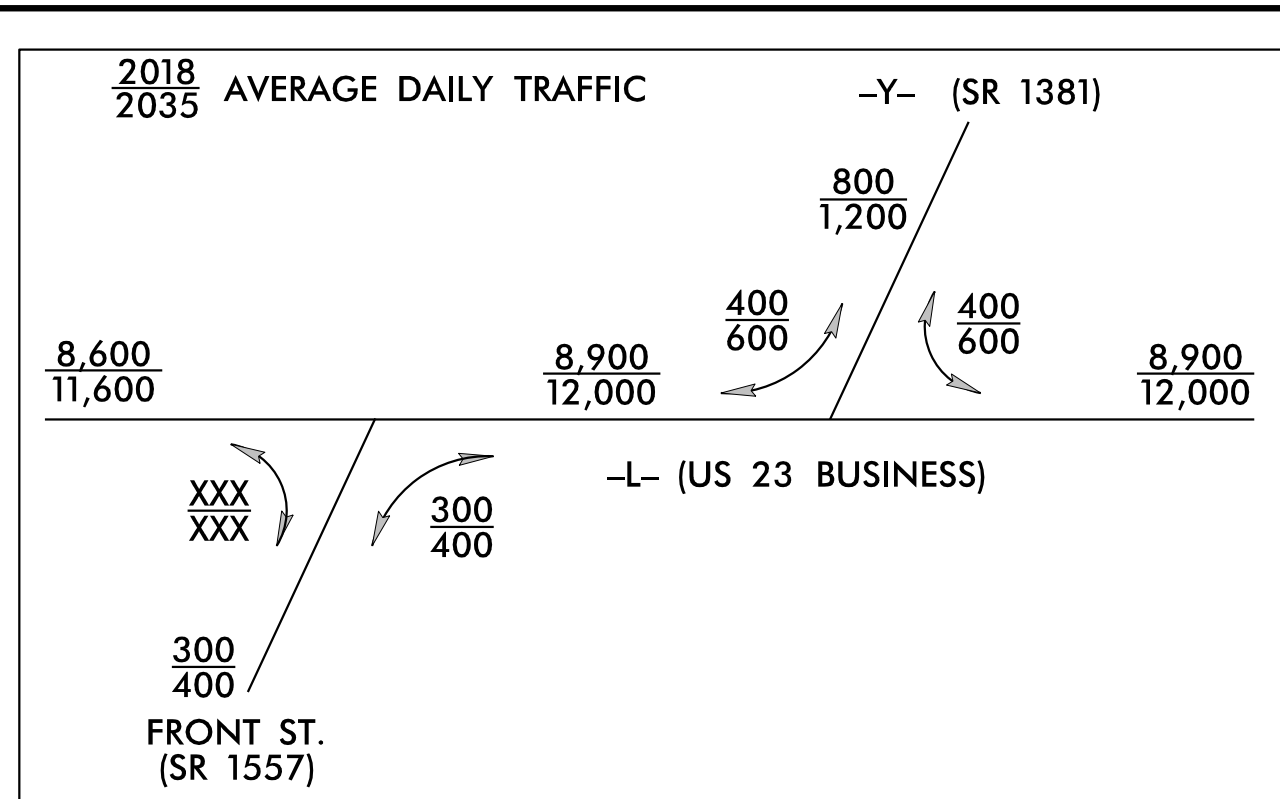
NOT TO SCALE

DIVISION OF HIGHWAYS
STATE OF NORTH CAROLINA

PROJECT REFERENCE NO. <i>B-5905</i>	SHEET NO. <i>EC-3A</i>
ROADWAY DESIGN ENGINEER	HYDRAULICS ENGINEER

SOIL STABILIZATION TIMEFRAMES

<i>SITE DESCRIPTION</i>	<i>STABILIZATION TIME</i>	<i>TIMEFRAME EXCEPTIONS</i>
PERIMETER DIKES, SWALES, DITCHES AND SLOPES	7 DAYS	NONE
HIGH QUALITY WATER (HQW) ZONES	7 DAYS	NONE
SLOPES STEEPER THAN 3:1	7 DAYS	IF SLOPES ARE 10' OR LESS IN LENGTH AND ARE NOT STEEPER THAN 2:1, 14 DAYS ARE ALLOWED.
SLOPES 3:1 OR FLATTER	14 DAYS	7 DAYS FOR SLOPES GREATER THAN 50' IN LENGTH.
ALL OTHER AREAS WITH SLOPES FLATTER THAN 4:1	14 DAYS	NONE, EXCEPT FOR PERIMETERS AND HQW ZONES.

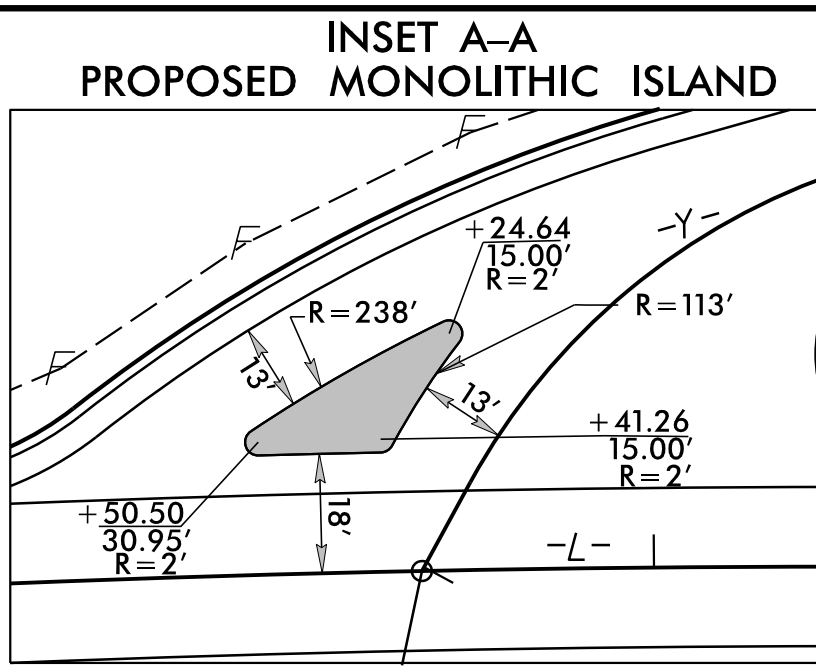


UTILITY OWNERS

DUKE ENERGY CORPORATION 1021 W. CLAY ST. CARY, N.C. 27513	PI Sta 11+70.70 $\Delta = 7' 14' 19.4" (LT)$ $D = 14' 19' 26.2"$ $L = 50.54'$ $T = 25.30'$ $R = 400.00'$	PI Sta 14+02.95 $\Delta = 17' 49' 00.5" (RT)$ $D = 14' 19' 26.2"$ $L = 124.38'$ $T = 62.70'$ $R = 400.00'$	PI Sta 16+03.04 $\Delta = 45' 25' 57.4" (LT)$ $D = 57' 17' 44.8"$ $L = 79.29'$ $T = 41.86'$ $R = 100.00'$
---	---	---	--

-Y1-

PI Sta 10+54.80 $\Delta = 36' 51' 17.8" (RT)$ $D = 54' 57' 42.2"$ $L = 67.06'$ $T = 34.73'$ $R = 104.25'$
--



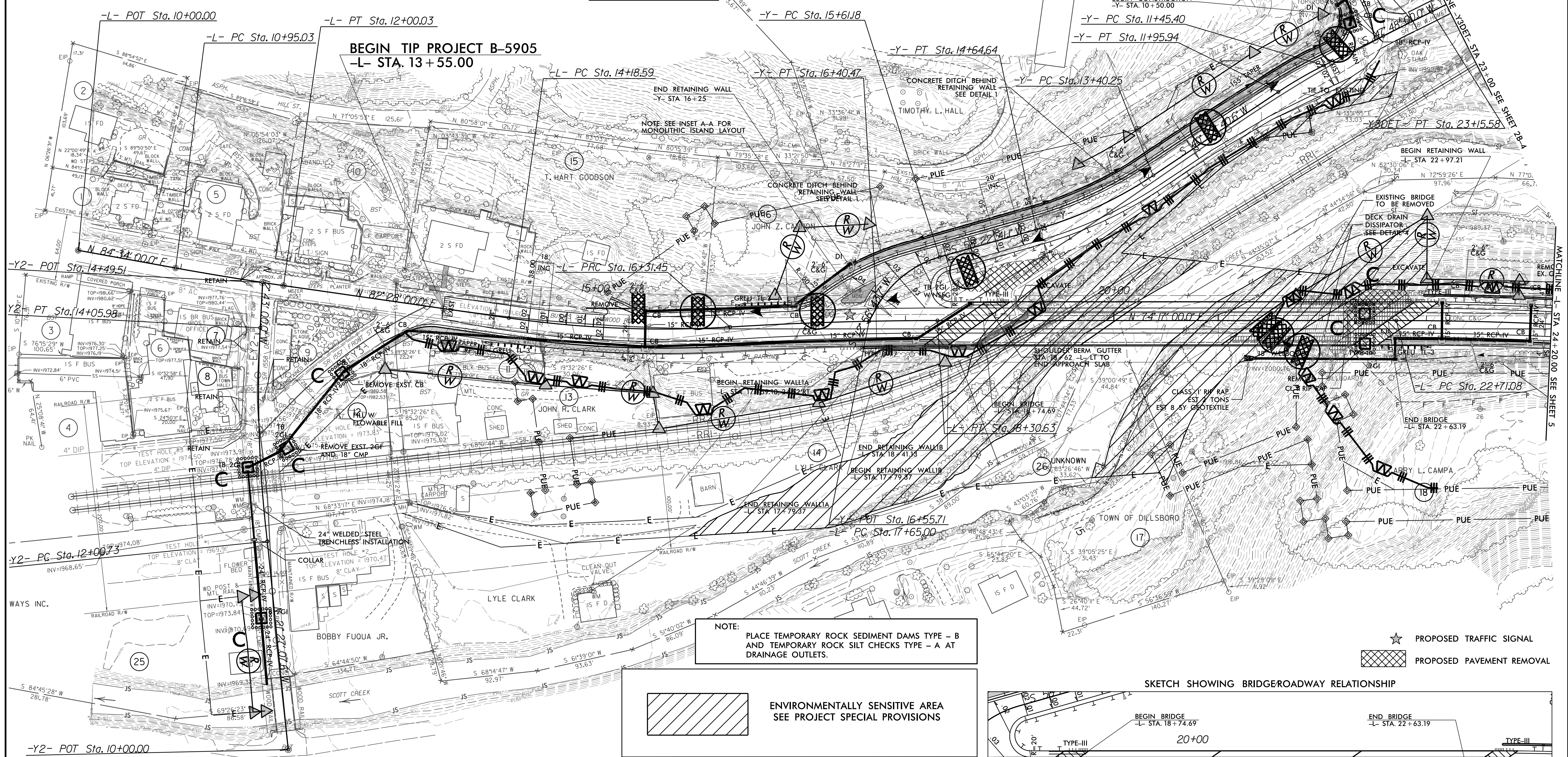
CLEARING AND GRUBBING
EROSION CONTROL FOR
CONSTRUCTION SHEET 04

PROJECT REFERENCE NO. B-5905	SHEET NO. EC-04/CONST.04
ROADWAY DESIGN ENGINEER	HYDRAULICS ENGINEER

-Y- POT Sta. 10+50.00 AH
BEGIN CONSTRUCTION

-Y3 DET- POT Sta. 23+35.69 BK
END CONSTRUCTION

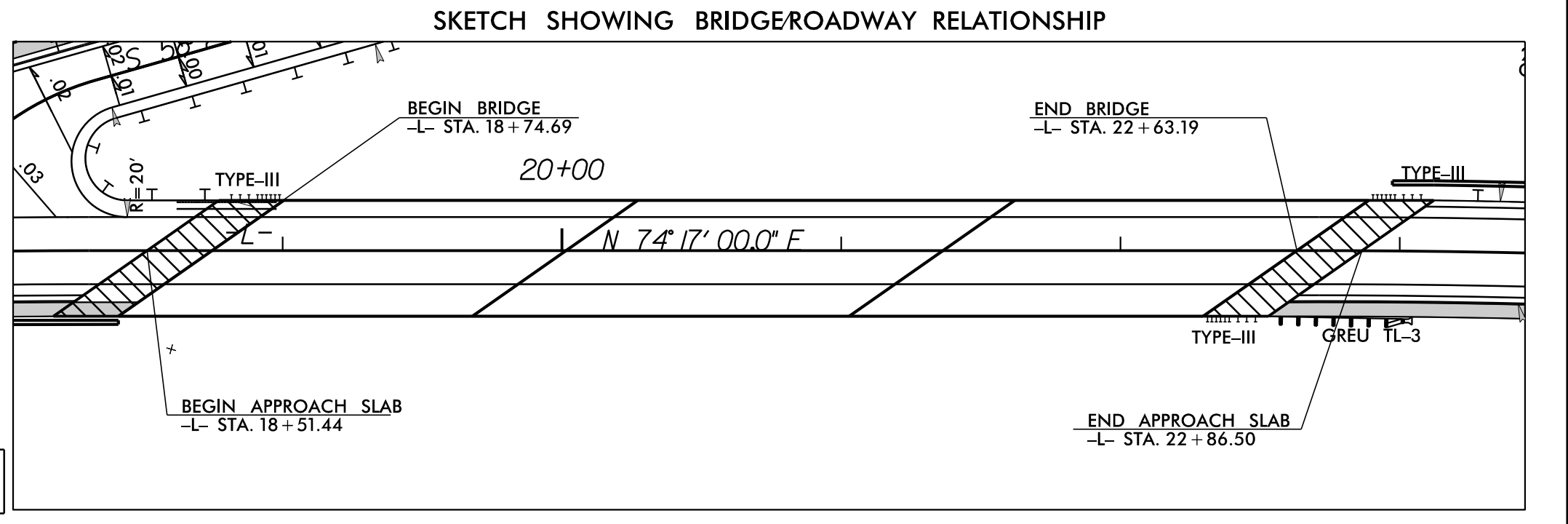
-Y1- POT Sta. 10+00.00



NOTE: DURING CONSTRUCTION, RETAIN EXISTING PLAQUES FROM EXISTING BRIDGE.
CONTRACTOR WILL PROVIDE THESE TO THE RESIDENT ENGINEER.

PI Sta 11+47.54 $\Delta = 2' 06' 00.0" (LT)$ $D = 2' 00' 00.0"$ $L = 105.00'$ $T = 52.51'$ $R = 2,864.79'$	PI Sta 15+25.39 $\Delta = 1' 43' 38.4" (LT)$ $D = 5' 30' 33.2"$ $L = 212.87'$ $T = 106.81'$ $R = 1,040.00'$	PI Sta 17+31.07 $\Delta = 3' 32' 38.4" (RT)$ $D = 1' 46' 45.7"$ $L = 199.17'$ $T = 99.62'$ $R = 3,220.00'$	PI Sta 23+51.35 $\Delta = 2' 51' 22.2" (RT)$ $D = 1' 46' 45.7"$ $L = 160.52'$ $T = 80.27'$ $R = 3,220.00'$	PI Sta 25+11.87 $\Delta = 2' 51' 22.2" (LT)$ $D = 1' 46' 45.7"$ $L = 160.52'$ $T = 80.27'$ $R = 3,220.00'$	PI Sta 13+03.61 $\Delta = 9' 47' 58.7" (RT)$ $D = 4' 46' 28.7"$ $L = 205.24'$ $T = 102.87'$ $R = 1,200.00'$
---	--	---	---	---	--

SEE SHEET 6 FOR -L- & -Y- PROFILES
SEE SHEETS S-? THRU S-? FOR STRUCTURE PLANS

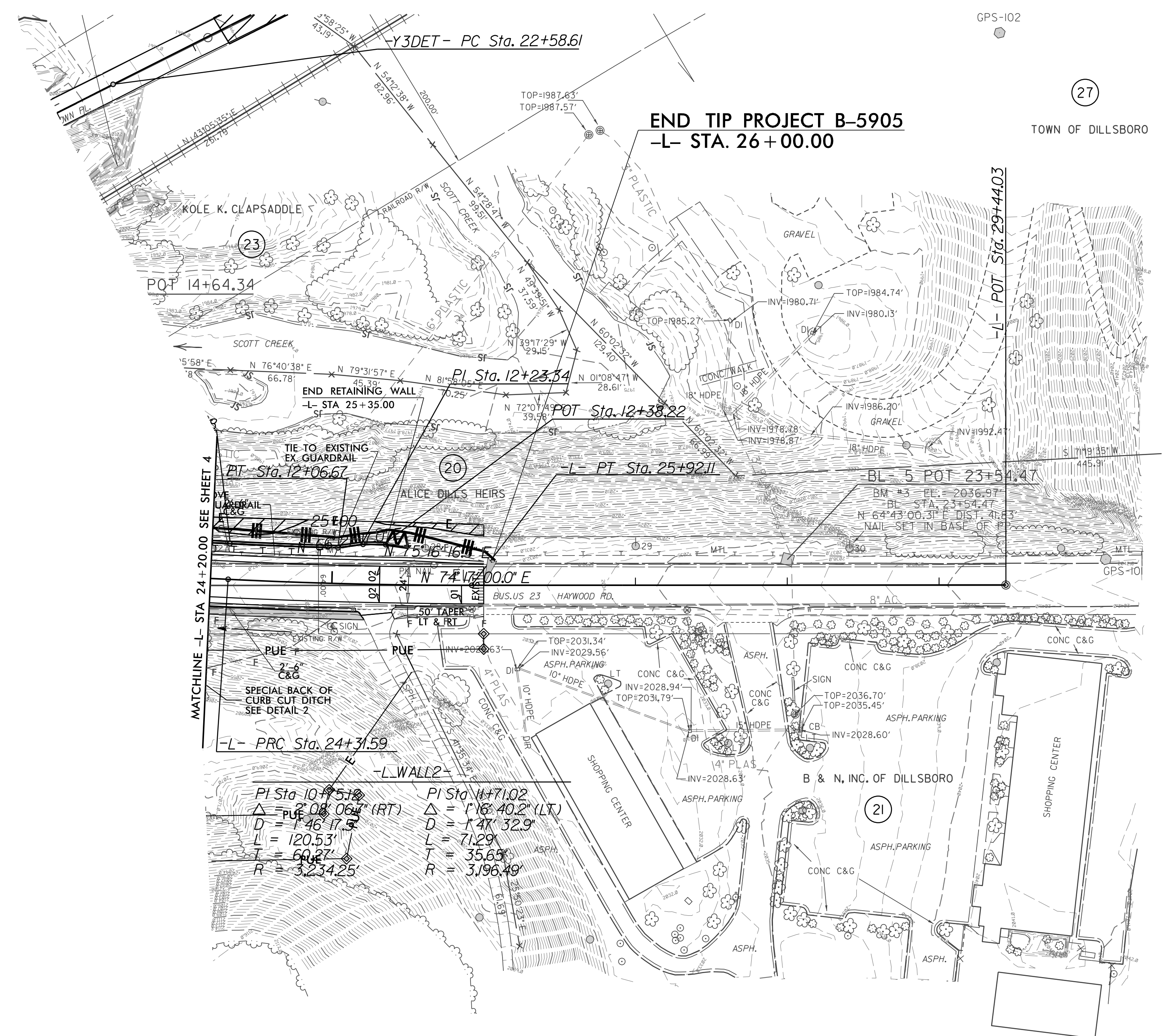


PROJECT REFERENCE NO.	SHEET NO.
B-5905	EC-05/CONST.05
RW SHEET NO.	
ROADWAY DESIGN ENGINEER	HYDRAULICS ENGINEER

NOTE:
PLACE TEMPORARY ROCK SEDIMENT DAMS TYPE - B
AND TEMPORARY ROCK SILT CHECKS TYPE - A AT
DRAINAGE OUTLETS.

 ENVIRONMENTALLY SENSITIVE AREA
SEE PROJECT SPECIAL PROVISIONS

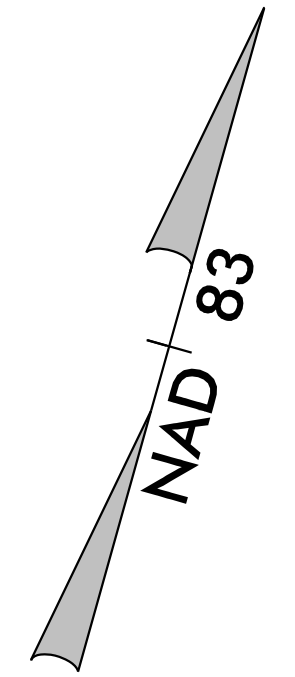
CLEARING AND GRUBBING
EROSION CONTROL FOR
CONSTRUCTION SHEET 05



GPS-102
GPS-101
GPS-100
GPS-103
GPS-104
GPS-105
GPS-106
GPS-107
GPS-108
GPS-109
GPS-110
GPS-111
GPS-112
GPS-113
GPS-114
GPS-115
GPS-116
GPS-117
GPS-118
GPS-119
GPS-120
GPS-121
GPS-122
GPS-123
GPS-124
GPS-125
GPS-126
GPS-127
GPS-128
GPS-129
GPS-130
GPS-131
GPS-132
GPS-133
GPS-134
GPS-135
GPS-136
GPS-137
GPS-138
GPS-139
GPS-140
GPS-141
GPS-142
GPS-143
GPS-144
GPS-145
GPS-146
GPS-147
GPS-148
GPS-149
GPS-150
GPS-151
GPS-152
GPS-153
GPS-154
GPS-155
GPS-156
GPS-157
GPS-158
GPS-159
GPS-160
GPS-161
GPS-162
GPS-163
GPS-164
GPS-165
GPS-166
GPS-167
GPS-168
GPS-169
GPS-170
GPS-171
GPS-172
GPS-173
GPS-174
GPS-175
GPS-176
GPS-177
GPS-178
GPS-179
GPS-180
GPS-181
GPS-182
GPS-183
GPS-184
GPS-185
GPS-186
GPS-187
GPS-188
GPS-189
GPS-190
GPS-191
GPS-192
GPS-193
GPS-194
GPS-195
GPS-196
GPS-197
GPS-198
GPS-199
GPS-200

RIGHT OF WAY AREA DATA

PARCEL NO.	PROPERTY OWNERS NAMES	RW AREA	PUE AREA	CONST. EASEMENT
11	WESTERN CAROLINA PROPERTIES	0.1083 acre		
12	STATE OF NC (NO CLAIM)			
13	JOHN R. CLARK	0.0703 acre	0.1249 acre	
14	LYLE CLARK	0.2444 acre	0.06 acre	
15	T. HART GOODSON		0.0883 acre	
16	JOHN Z. CANNON	0.1023 acre	0.1843 acre	
17	TOWN OF DILLSBORO		0.0154 acre	0.0412 acre
18	LARRY L. CAMPA		0.4624 acre	0.7822 acre
19	TIMOTHY L. HALL	0.1204 acre	0.055 acre	0.0181 acre
20	ALICE DILLS HEIRS	0.1404 acre		0.0529 acre
21	B & N INC OF DILLSBORO		0.013 acre	
23	KOLE K. CLAPSADDLE		0.0147 acre	
25	AMERICAN HERITAGE RAILWAYS	0.4935 acre	0.1996 acre	2.6998 acre
26	UNKNOWN			0.1324 acre
27	TOWN OF DILLSBORO			0.0675 acre

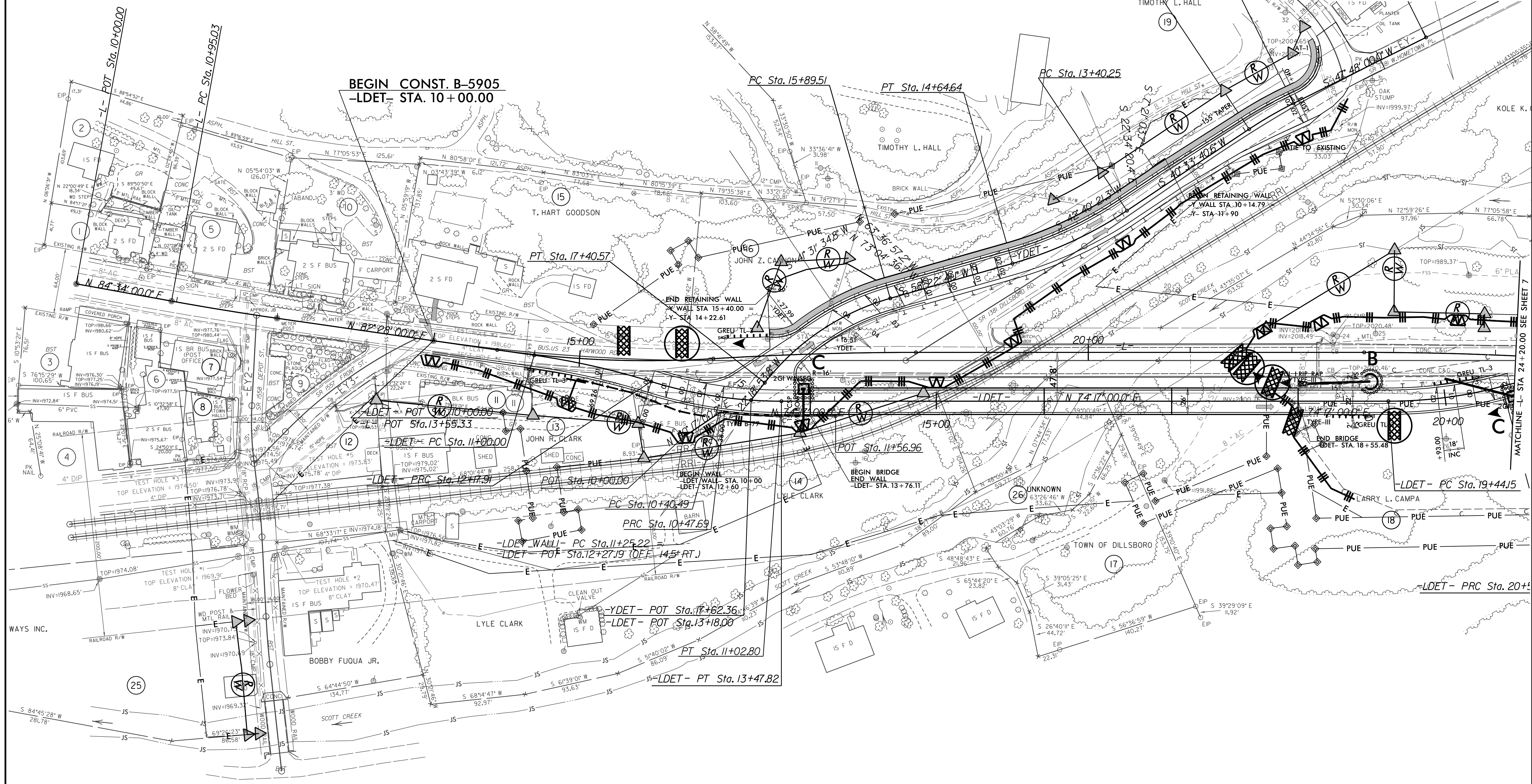
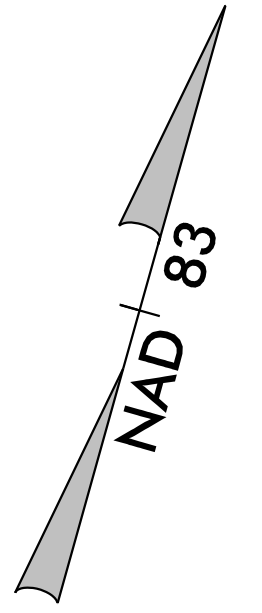


-L- DETOUR

PROJECT REFERENCE NO. B-5905	SHEET NO. EC-06/CONST.04
RW SHEET NO.	
ROADWAY DESIGN ENGINEER	HYDRAULICS ENGINEER

Place Matting for Erosion Control
on Slope as Work Allows.
Sta. 11+50 to Sta. 12+80 -LDET- RT

UTILITY OWNERS
DUKE ENERGY CORPORATION
1020 W. CHATHAM ST.
CARY, N.C. 27511
FRONTIER COMMUNICATIONS
84 ALLEN STREET
SYLVA, N.C. 28779
TUCKASEE WATER & SEWER
1246 W. MAIN ST.
SYLVA, N.C. 28779
MORRIS BROADBAND
134 SKYLAND DR.
SYLVA, N.C. 28779



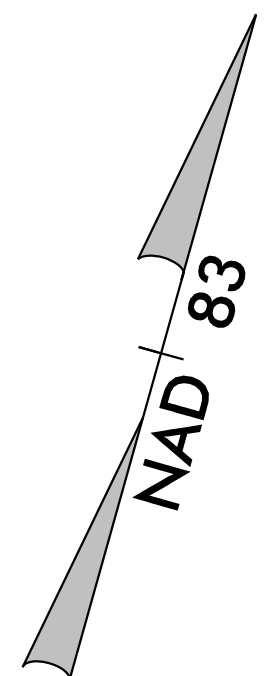
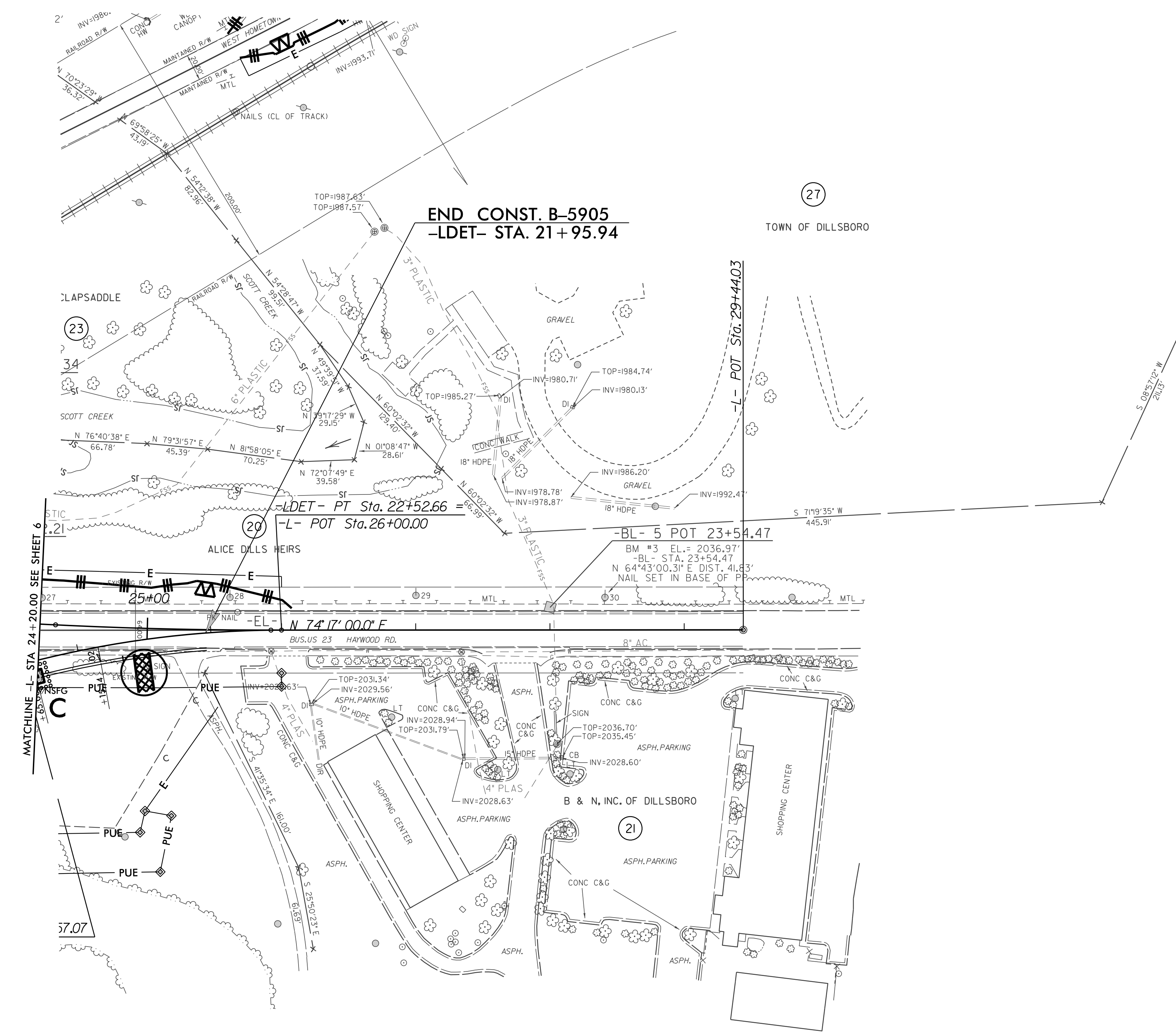
BEGIN CONST. B-5905
-LDET- STA. 10+00.00

-LDET-			
PI Sta 11+59.08	PI Sta 12+83.36	PI Sta 20+00.93	PI Sta 21+55.42
$\Delta = 9^{\circ} 00' 26.8''$ (RT)	$\Delta = 17^{\circ} 11' 26.8''$ (LT)	$\Delta = 14^{\circ} 56' 30.9''$ (LT)	$\Delta = 14^{\circ} 56' 31.0''$ (RT)
$D = 7^{\circ} 38' 22.0''$	$D = 13^{\circ} 13' 56.2''$	$D = 13^{\circ} 13' 56.2''$	$D = 7^{\circ} 38' 22.0''$
$L = 117.91'$	$L = 129.92'$	$L = 112.92'$	$L = 195.59'$
$T = 59.08'$	$T = 65.45'$	$T = 56.78'$	$T = 98.35'$
$R = 750.00'$	$R = 433.00'$	$R = 433.00'$	$R = 750.00'$

-YDET-		
PI Sta 11+70.70	PI Sta 14+02.95	PI Sta 16+67.63
$\Delta = 7^{\circ} 14' 19.4''$ (LT)	$\Delta = 17^{\circ} 49' 00.5''$ (RT)	$\Delta = 36^{\circ} 03' 47.3''$ (LT)
$D = 14^{\circ} 19' 26.2''$	$D = 14^{\circ} 19' 26.2''$	$D = 23^{\circ} 52' 23.7''$
$L = 50.54'$	$L = 124.38'$	$L = 151.06'$
$T = 25.30'$	$T = 62.70'$	$T = 78.13'$
$R = 400.00'$	$R = 400.00'$	$R = 240.00'$

-L- DETOUR

PROJECT REFERENCE NO.	SHEET NO.
B-5905	EC-07/CONST.05
RW SHEET NO.	
ROADWAY DESIGN ENGINEER	HYDRAULICS ENGINEER



RIGHT OF WAY AREA DATA

PARCEL NO.	PROPERTY OWNERS NAMES	RW AREA	PUE AREA	CONST. EASEMENT
11	WESTERN CAROLINA PROPERTIES	0.1083 acre		
12	STATE OF NC (NO CLAIM)			
13	JOHN R. CLARK	0.0703 acre	0.1249 acre	
14	LYLE CLARK	0.2444 acre	0.06 acre	
15	T. HART GOODSON		0.0883 acre	
16	JOHN Z. CANNON	0.1023 acre	0.1843 acre	
17	TOWN OF DILLSBORO		0.0154 acre	0.0412 acre
18	LARRY L. CAMPA		0.4624 acre	0.7822 acre
19	TIMOTHY L. HALL	0.1204 acre	0.055 acre	0.0181 acre
20	ALICE DILLS HEIRS	0.1404 acre		0.0529 acre
21	B & N INC OF DILLSBORO		0.013 acre	
23	KOLE K. CLAPSADDLE		0.0147 acre	
25	AMERICAN HERITAGE RAILWAYS	0.4935 acre	0.1996 acre	2.6998 acre
26	UNKNOWN			0.1324 acre
27	TOWN OF DILLSBORO			0.0675 acre

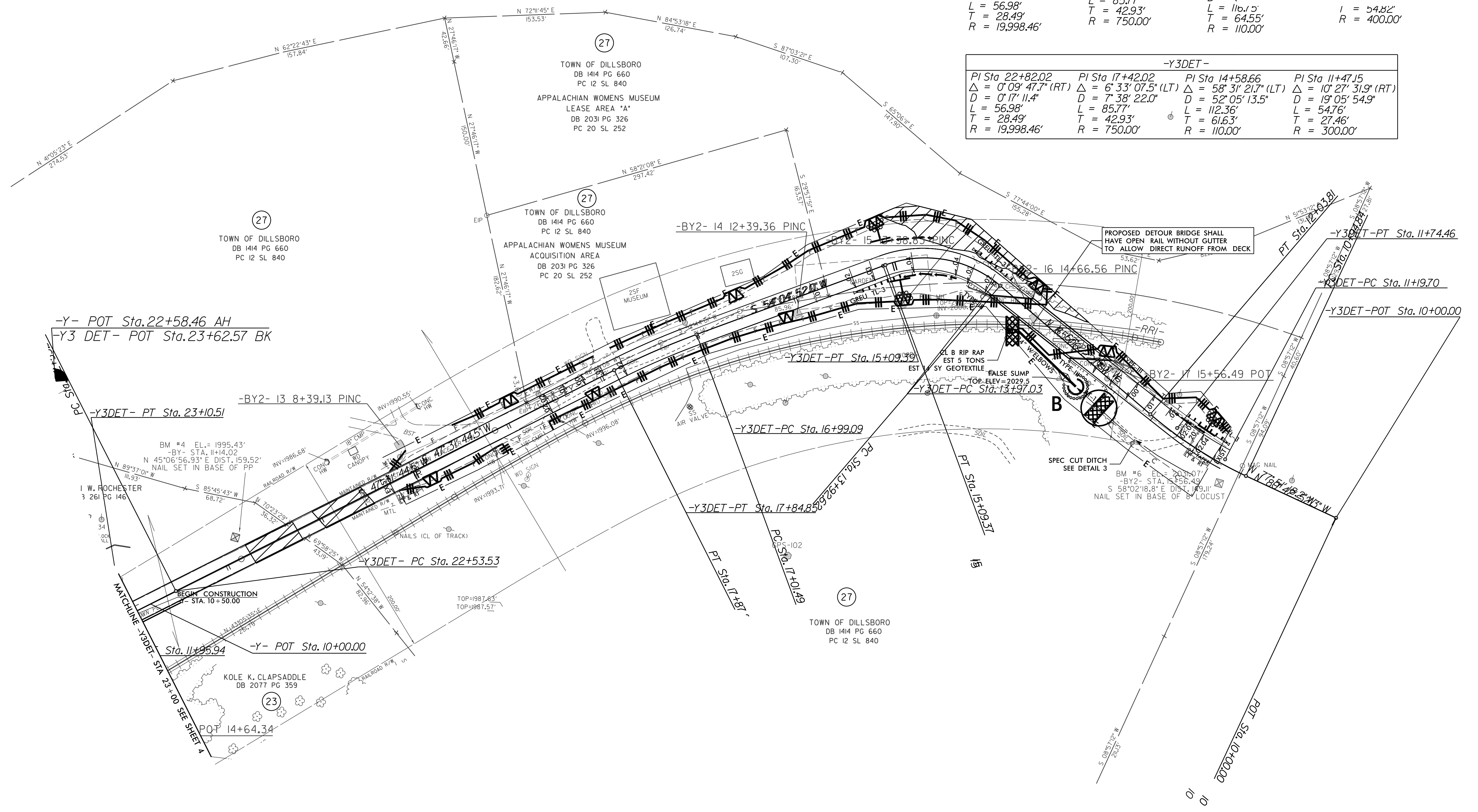
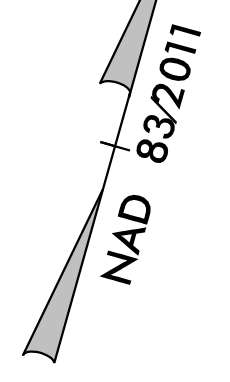
-Y3DET-

Place Matting for Erosion Control
 on Slope as Work Allows.
 Sta. 11+50 to Sta. 11+85 -Y3DET- RT
 Sta. 14+35 to Sta. 15+00 -Y3DET- LT
 Sta. 14+65 to Sta. 15+10 -Y3DET- RT

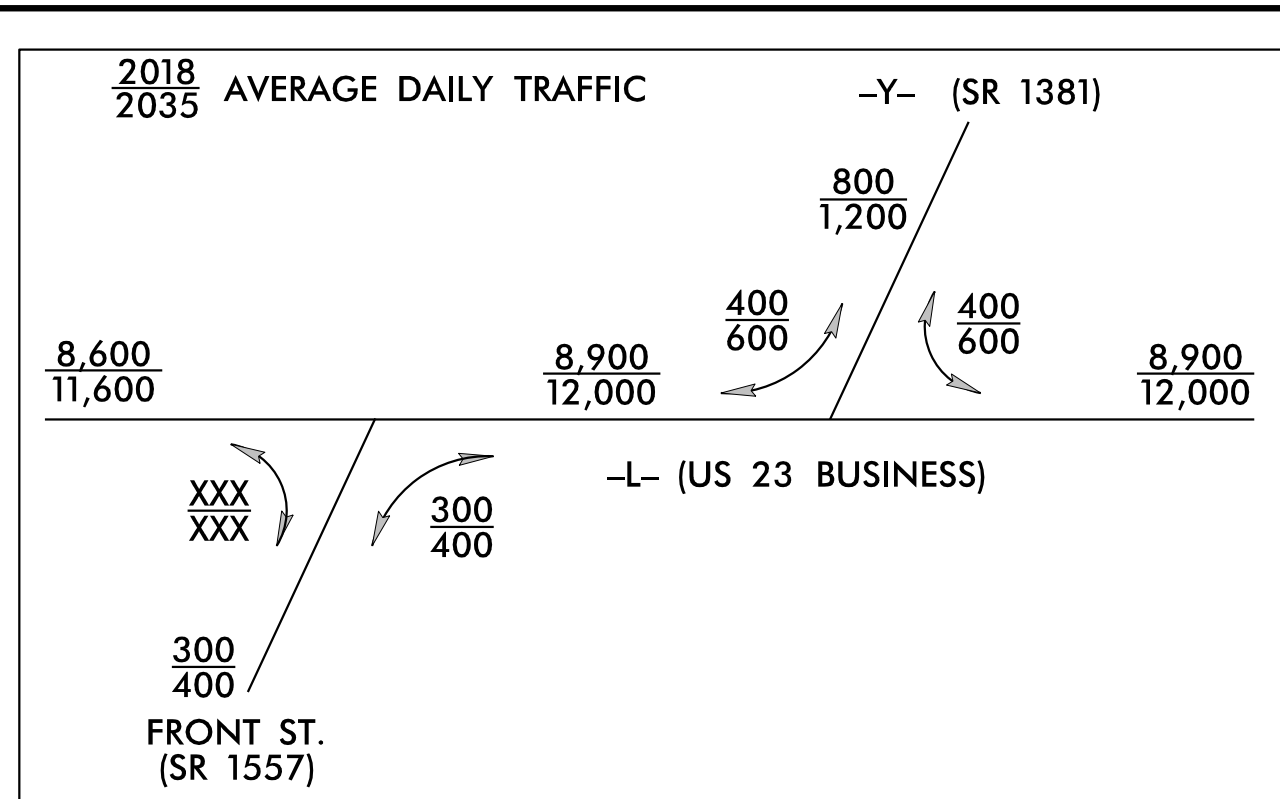
PROJECT REFERENCE NO. B-5905	SHEET NO. EC-08/CONST.06
RW SHEET NO.	
ROADWAY DESIGN ENGINEER	HYDRAULICS ENGINEER

 ENVIRONMENTALLY SENSITIVE AREA
 SEE PROJECT SPECIAL PROVISIONS

PI Sta 22+84.42 $\Delta = 0'09"47.7"$ (RT) $D = 0'17"11.4"$ $L = 56.98'$ $T = 28.49'$ $R = 19,998.46'$	PI Sta 17+44.42 $\Delta = 6'33"07.5"$ (LT) $D = 7'38"22.0"$ $L = 85.77'$ $T = 42.93'$ $R = 750.00'$	PI Sta 14+58.66 $\Delta = 58'31"21.7"$ (LT) $D = 52'05"13.5"$ $L = 112.36'$ $T = 61.63'$ $R = 110.00'$	PI Sta 11+47.15 $\Delta = 10'27"31.9"$ (RT) $D = 19'05"54.9"$ $L = 54.76'$ $T = 27.46'$ $R = 300.00'$	I = 54.82' R = 400.00'
---	--	---	--	---------------------------

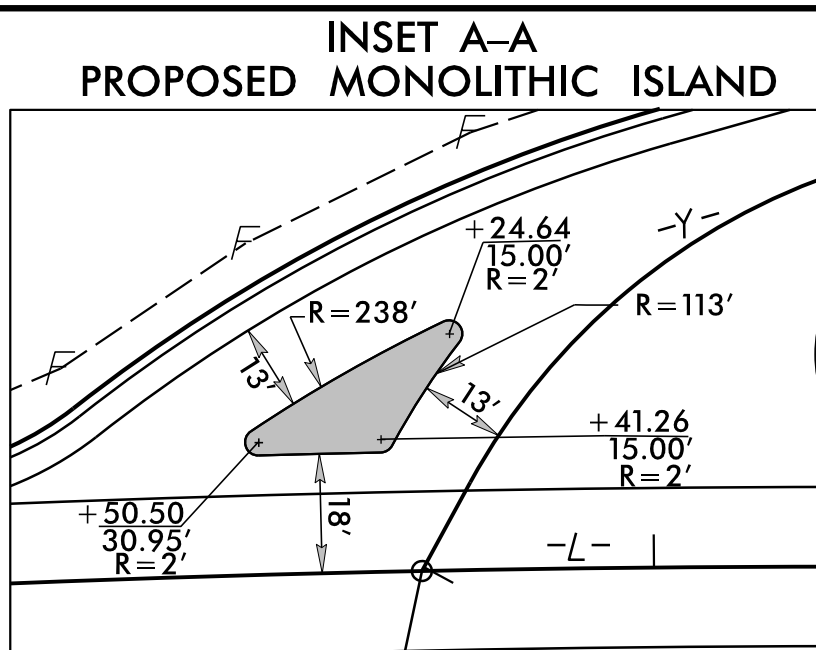


-Y3DET-			
PI Sta 22+82.02 $\Delta = 0'09"47.7"$ (RT) $D = 0'17"11.4"$ $L = 56.98'$ $T = 28.49'$ $R = 19,998.46'$	PI Sta 17+42.02 $\Delta = 6'33"07.5"$ (LT) $D = 7'38"22.0"$ $L = 85.77'$ $T = 42.93'$ $R = 750.00'$	PI Sta 14+58.66 $\Delta = 58'31"21.7"$ (LT) $D = 52'05"13.5"$ $L = 112.36'$ $T = 61.63'$ $R = 110.00'$	PI Sta 11+47.15 $\Delta = 10'27"31.9"$ (RT) $D = 19'05"54.9"$ $L = 54.76'$ $T = 27.46'$ $R = 300.00'$



UTILITY OWNERS	-Y-	-Y-
DUKE ENERGY CORPORATION 1021 W. CARY, N.C. CARY, N.C. 27513	PI Sta 11+70.70 $\Delta = 7' 14' 19.4''$ (LT) $D = 14' 19' 26.2''$ $L = 50.54'$ $T = 25.30'$ $R = 400.00'$	PI Sta 14+02.95 $\Delta = 17' 49' 00.5''$ (RT) $D = 14' 19' 26.2''$ $L = 124.38'$ $T = 62.70'$ $R = 400.00'$
MORRIS BROADBAND 134 SKYLAND DR. SYLVA, N.C. 28779	PI Sta 16+03.04 $\Delta = 45' 25' 57.4''$ (LT) $D = 57' 17' 44.8''$ $L = 79.29'$ $T = 41.86'$ $R = 100.00'$	

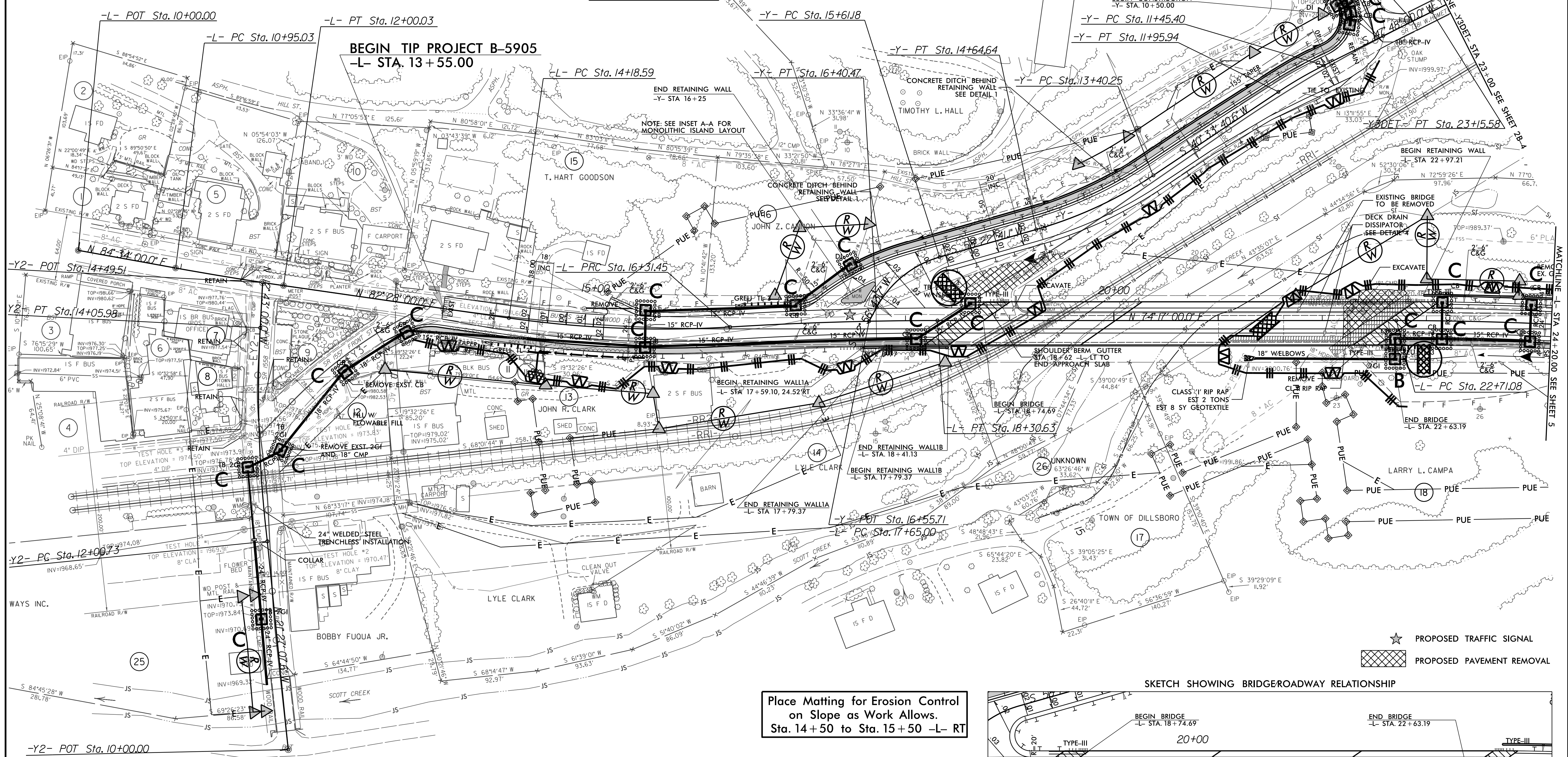
-Y1-
PI Sta 10+54.80 $\Delta = 36' 51' 17.8''$ (RT) $D = 54' 57' 42.2''$ $L = 67.06'$ $T = 34.73'$ $R = 104.25'$



FINAL GRADING
EROSION CONTROL FOR
CONSTRUCTION SHEET 04

PROJECT REFERENCE NO. B-5905	SHEET NO. EC-09/CONST.04
ROADWAY DESIGN ENGINEER	HYDRAULICS ENGINEER

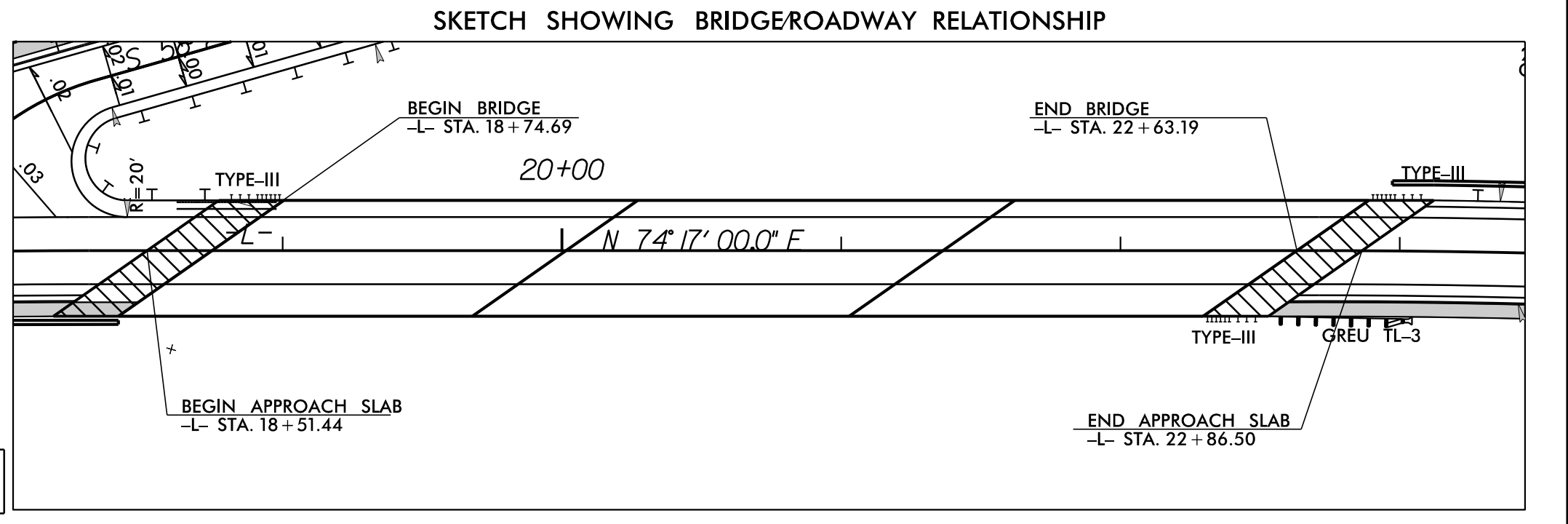
-Y- POT Sta. 10+50.00 AH
BEGIN CONSTRUCTION
-Y3 DET- POT Sta. 23+35.69 BK
END CONSTRUCTION
-Y1- POT Sta. 10+00.00



NOTE: DURING CONSTRUCTION, RETAIN EXISTING PLAQUES FROM EXISTING BRIDGE. CONTRACTOR WILL PROVIDE THESE TO THE RESIDENT ENGINEER.

-L-					-Y2-	
PI Sta 11+47.54 $\Delta = 2' 06' 00.0''$ (LT) $D = 2' 00' 00.0''$ $L = 105.00'$ $T = 52.51'$ $R = 2,864.79'$	PI Sta 15+25.39 $\Delta = 1' 43' 38.4''$ (LT) $D = 5' 30' 33.2''$ $L = 199.17'$ $T = 106.81'$ $R = 1,040.00'$	PI Sta 17+31.07 $\Delta = 3' 32' 38.4''$ (RT) $D = 1' 46' 45.7''$ $L = 199.17'$ $T = 99.62'$ $R = 3,220.00'$	PI Sta 23+51.35 $\Delta = 2' 51' 22.2''$ (RT) $D = 1' 46' 45.7''$ $L = 160.52'$ $T = 80.27'$ $R = 3,220.00'$	PI Sta 25+11.87 $\Delta = 2' 51' 22.2''$ (LT) $D = 1' 46' 45.7''$ $L = 160.52'$ $T = 80.27'$ $R = 3,220.00'$	PI Sta 13+03.61 $\Delta = 9' 47' 58.7''$ (RT) $D = 4' 46' 28.7''$ $L = 205.24'$ $T = 102.87'$ $R = 1,200.00'$	

Place Matting for Erosion Control
on Slope as Work Allows.
Sta. 14+50 to Sta. 15+50 -L- RT

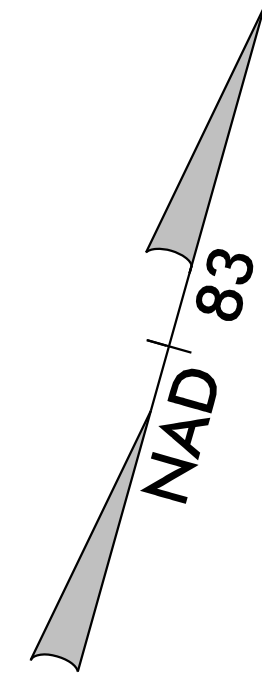
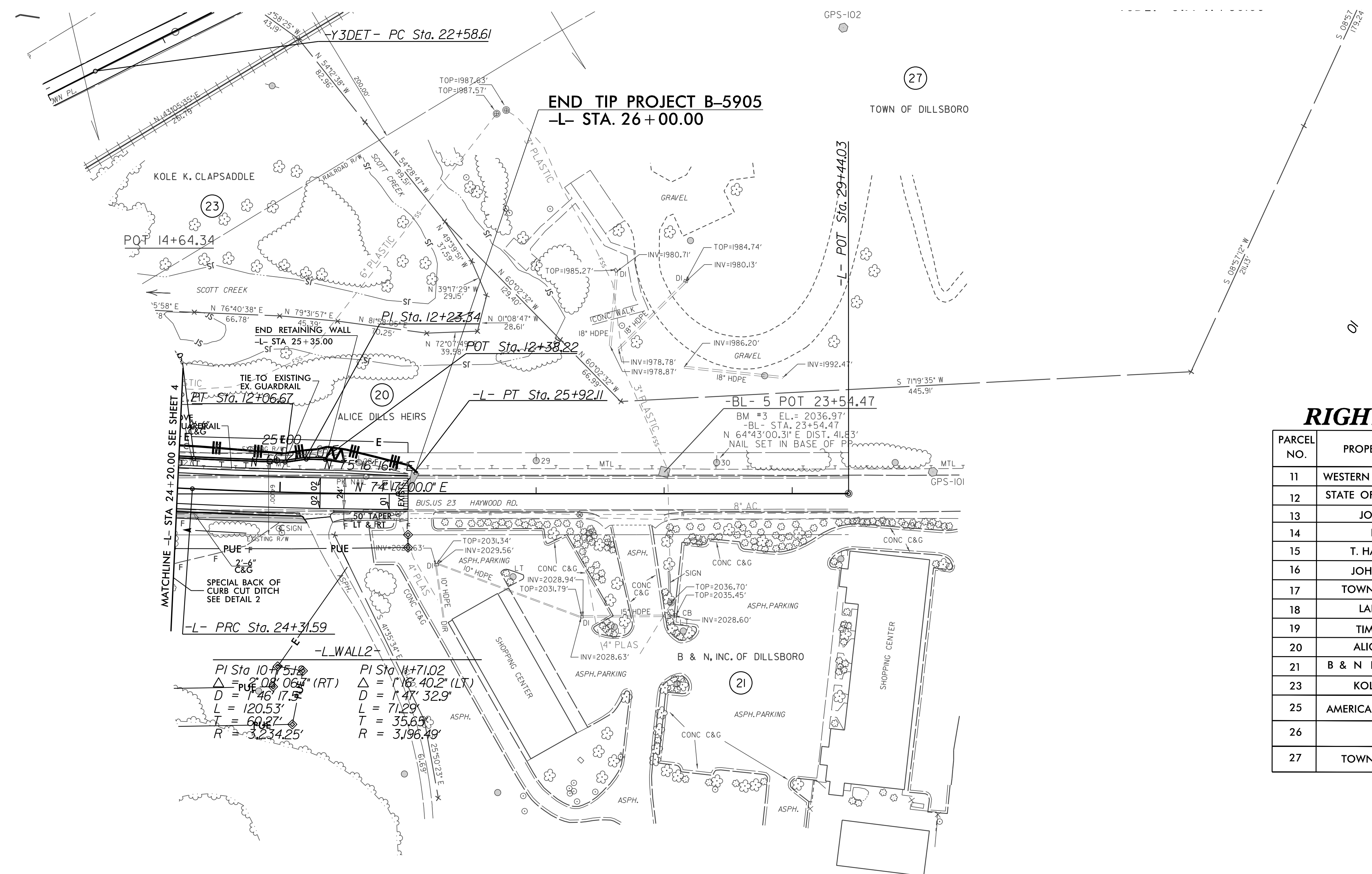


- ★ PROPOSED TRAFFIC SIGNAL
- ▨ PROPOSED PAVEMENT REMOVAL

SEE SHEET 6 FOR -L- & -Y- PROFILES
SEE SHEETS S-2 THRU S-7 FOR STRUCTURE PLANS

PROJECT REFERENCE NO.	SHEET NO.
B-5905	EC-10/CONST.05
RW SHEET NO.	
ROADWAY DESIGN ENGINEER	HYDRAULICS ENGINEER

FINAL GRADING
EROSION CONTROL FOR
CONSTRUCTION SHEET 05



RIGHT OF WAY AREA DATA

PARCEL NO.	PROPERTY OWNERS NAMES	RW AREA	PUE AREA	CONST. EASEMENT
11	WESTERN CAROLINA PROPERTIES	0.1083 acre		
12	STATE OF NC (NO CLAIM)			
13	JOHN R. CLARK	0.0703 acre	0.1249 acre	
14	LYLE CLARK	0.2444 acre	0.06 acre	
15	T. HART GOODSON		0.0883 acre	
16	JOHN Z. CANNON	0.1023 acre	0.1843 acre	
17	TOWN OF DILLSBORO		0.0154 acre	0.0412 acre
18	LARRY L. CAMPA		0.4624 acre	0.7822 acre
19	TIMOTHY L. HALL	0.1204 acre	0.055 acre	0.0181 acre
20	ALICE DILLS HEIRS	0.1404 acre		0.0529 acre
21	B & N INC OF DILLSBORO		0.013 acre	
23	KOLE K. CLAPSADDLE		0.0147 acre	
25	AMERICAN HERITAGE RAILWAYS	0.4935 acre	0.1996 acre	2.6998 acre
26	UNKNOWN			0.1324 acre
27	TOWN OF DILLSBORO			0.0675 acre