

**This electronic collection of documents is provided
for the convenience of the user
and is Not a Certified Document –**

**The documents contained herein were originally issued
and sealed by the individuals whose names and license
numbers appear on each page, on the dates appearing
with their signature on that page.**

**This file or an individual page
shall not be considered a certified document.**

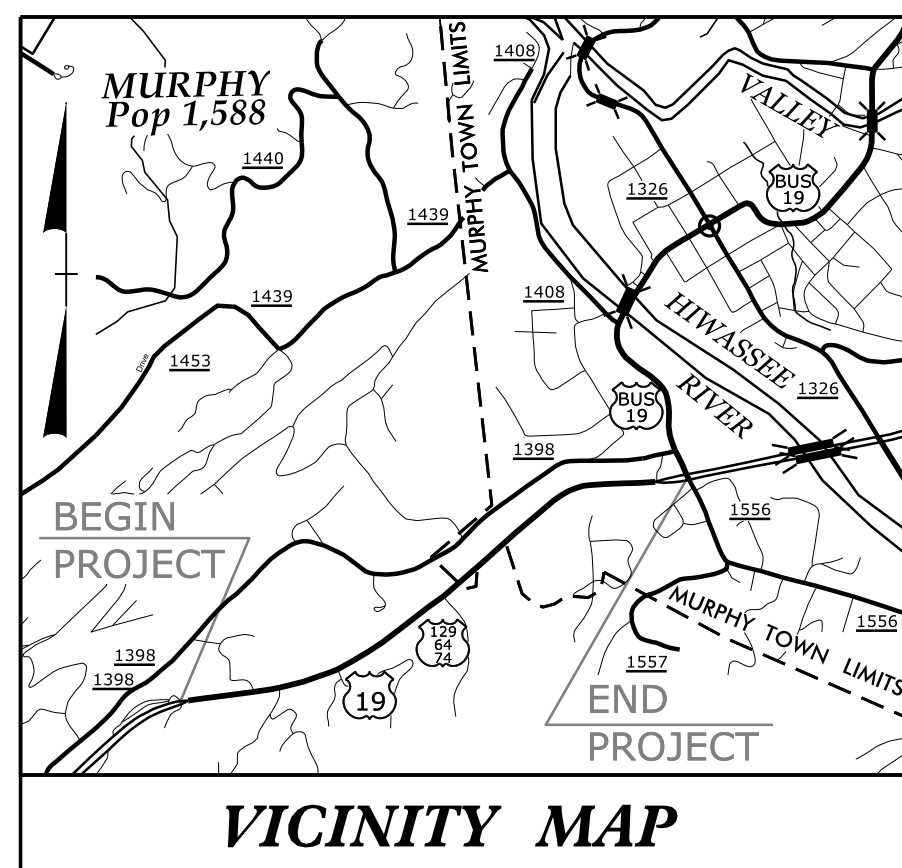
TIP PROJECT: R-5735

STATE OF NORTH CAROLINA
DIVISION OF HIGHWAYS

**UTILITIES BY OTHERS PLANS
CHEROKEE COUNTY**

T.I.P. NO.	SHEET NO.
R-5735	UO-1

NOTE:
ALL UTILITY WORK SHOWN ON THIS SHEET WILL BE DONE BY OTHERS. NO PAYMENT WILL BE MADE TO THE CONTRACTOR FOR UTILITY WORK SHOWN ON THIS SHEET.

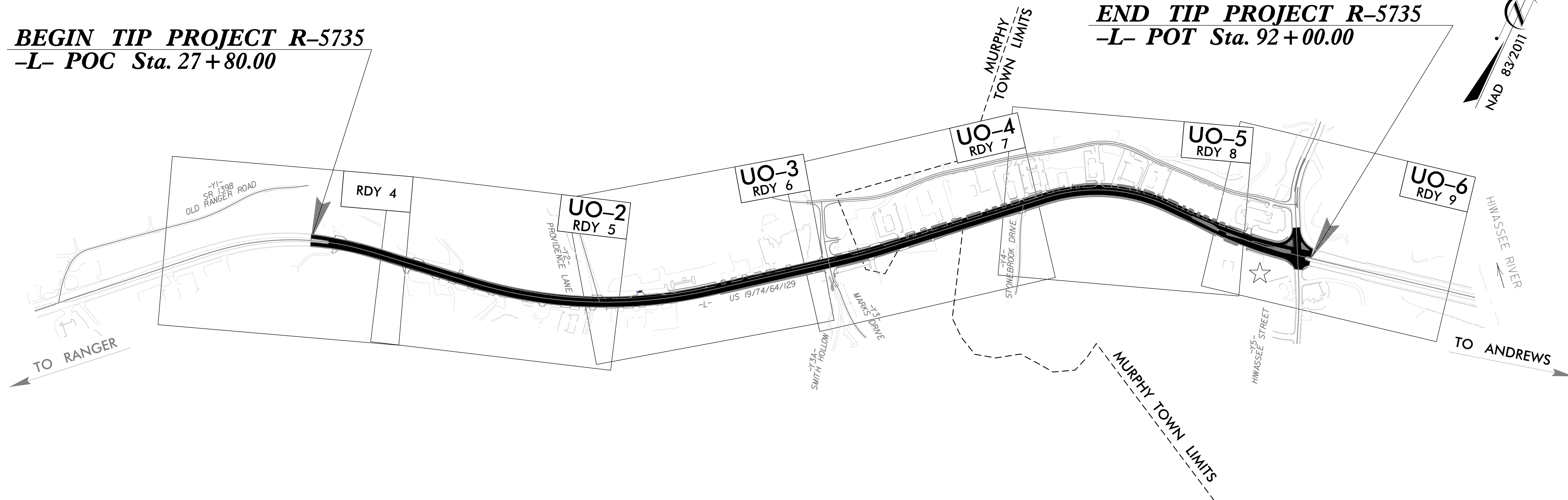


**LOCATION: US 19/US 74/US 64/US 129 FROM END OF DIVIDED SECTION
TO US 19 BUS. (HIWASSEE STREET)**

TYPE OF WORK: POWER DISTRIBUTION AND COMMUNICATIONS RELOCATION

**END TIP PROJECT R-5735
-L- POT Sta. 92+00.00**

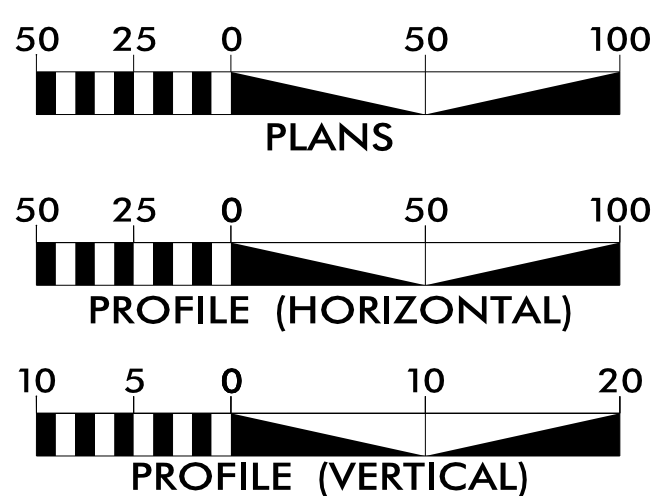
**BEGIN TIP PROJECT R-5735
-L- POC Sta. 27+80.00**



- NOTES:**
- PROJECT IS PARTIALLY LOCATED WITHIN THE MUNICIPAL BOUNDARIES OF THE TOWN OF MURPHY.
 - CLEARING ON THIS PROJECT SHALL BE PERFORMED TO

☆ = REVISED SIGNAL

GRAPHIC SCALES



INDEX OF SHEETS

SHEET NO.:	DESCRIPTION:
UO-1	TITLE SHEET
UO-2 THRU UO-6	UBO PLAN SHEETS

UTILITY OWNERS WITH CONFLICTS

- (A) POWER DISTRIBUTION - MURPHY POWER
- (B) COMMUNICATIONS - FRONTIER COMMUNICATIONS
- (C) COMMUNICATIONS - BLUE RIDGE MOUNTAIN EMC
- (D) COMMUNICATIONS - BALSAMWEST FIBERNET
- (E) COMMUNICATIONS - THE CABLE COMPANY

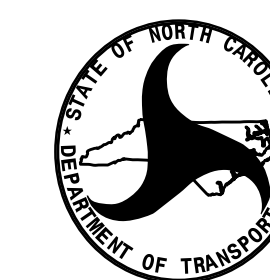
PREPARED IN THE OFFICE OF:

Michael Baker

INTERNATIONAL

Michael Baker Engineering, Inc.
8000 Regency Parkway, Suite 600
Cary, NC 27518
919-463-5488

Todd H. Buckner, P. E.	PROJECT ENGINEER
Brandy Creech	PROJECT UTILITY COORDINATOR
Christiane Newsome	PROJECT UTILITY TECHNICIAN



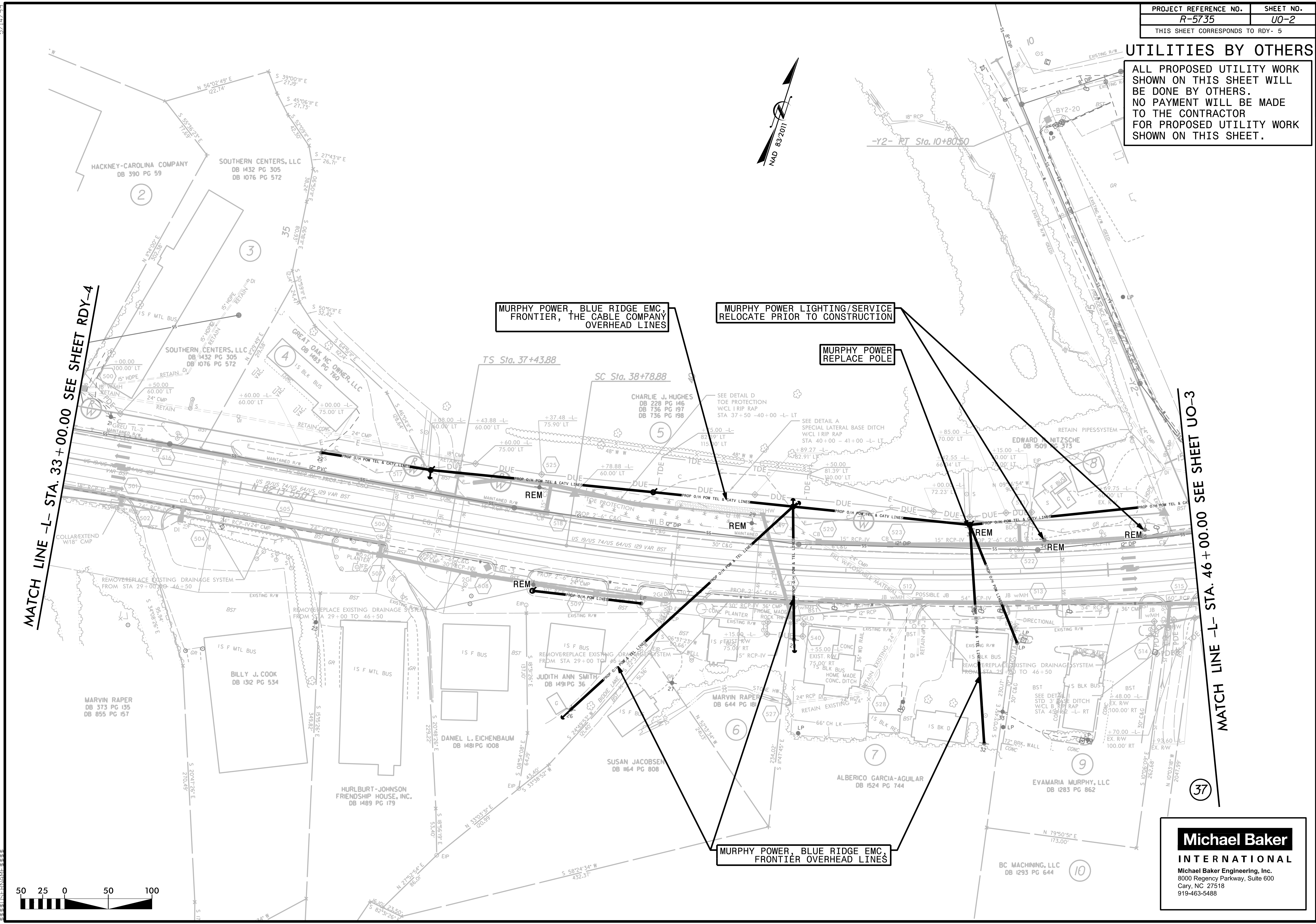
**DIVISION OF HIGHWAYS
DIVISION 14**

253 WEBSTER ROAD
SYLVIA, NC 28779
PHONE (828) 586-2141

Kenneth McDowell	ASSISTANT DESIGN CONSTRUCTION ENGINEER
Bob Golding	DIVISION UTILITY ENGINEER
Bill Green	DIVISION UTILITY COORDINATOR

UTILITIES BY OTHERS

ALL PROPOSED UTILITY WORK SHOWN ON THIS SHEET WILL BE DONE BY OTHERS. NO PAYMENT WILL BE MADE TO THE CONTRACTOR FOR PROPOSED UTILITY WORK SHOWN ON THIS SHEET.



MATCH LINE -L- STA. 33+00.00 SEE SHEET RDY-4

MATCH LINE -L- STA. 46+00.00 SEE SHEET UO-3

MURPHY POWER, BLUE RIDGE EMC, FRONTIER, THE CABLE COMPANY OVERHEAD LINES

MURPHY POWER LIGHTING/SERVICE RELOCATE PRIOR TO CONSTRUCTION

MURPHY POWER REPLACE POLE

MURPHY POWER, BLUE RIDGE EMC, FRONTIER OVERHEAD LINES

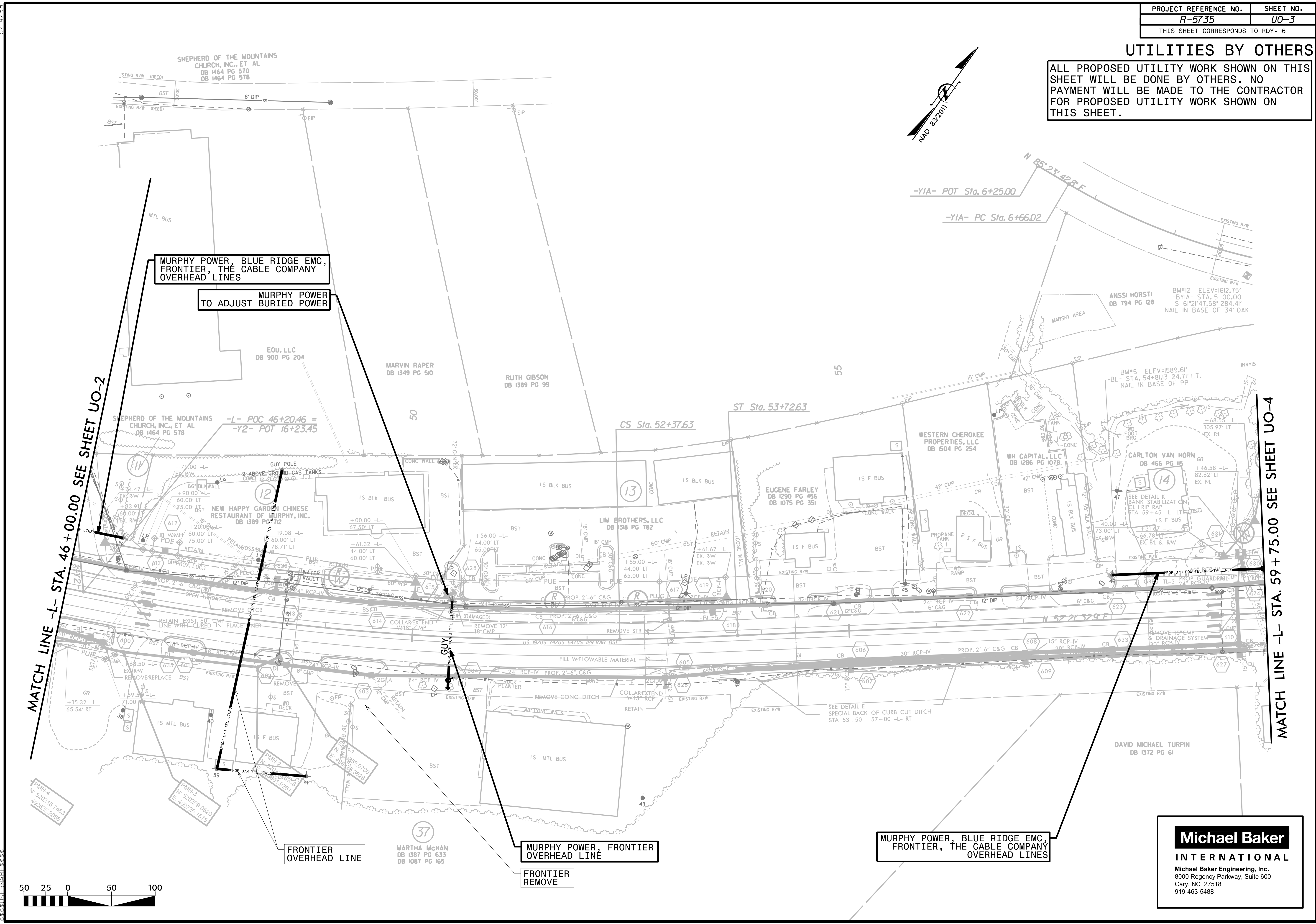
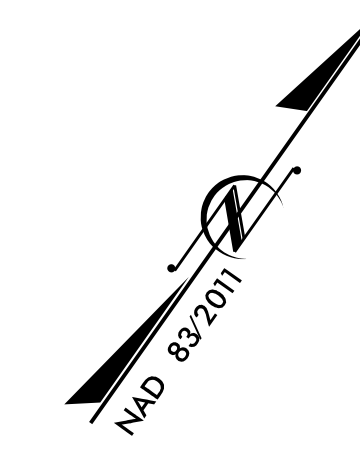


Michael Baker INTERNATIONAL
 Michael Baker Engineering, Inc.
 8000 Regency Parkway, Suite 600
 Cary, NC 27518
 919-463-5488

5/14/2011

UTILITIES BY OTHERS

ALL PROPOSED UTILITY WORK SHOWN ON THIS SHEET WILL BE DONE BY OTHERS. NO PAYMENT WILL BE MADE TO THE CONTRACTOR FOR PROPOSED UTILITY WORK SHOWN ON THIS SHEET.



MURPHY POWER, BLUE RIDGE EMC, FRONTIER, THE CABLE COMPANY OVERHEAD LINES
 TO ADJUST BURIED POWER

FRONTIER OVERHEAD LINE

MURPHY POWER, FRONTIER OVERHEAD LINE

FRONTIER REMOVE

MURPHY POWER, BLUE RIDGE EMC, FRONTIER, THE CABLE COMPANY OVERHEAD LINES

Michael Baker
INTERNATIONAL
 Michael Baker Engineering, Inc.
 8000 Regency Parkway, Suite 600
 Cary, NC 27518
 919-463-5488

MATCH LINE -L- STA. 46+00.00 SEE SHEET UO-2

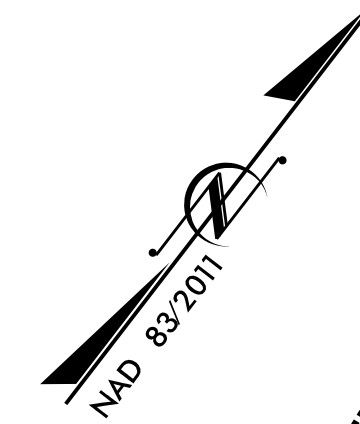
MATCH LINE -L- STA. 59+75.00 SEE SHEET UO-4



5/14/99

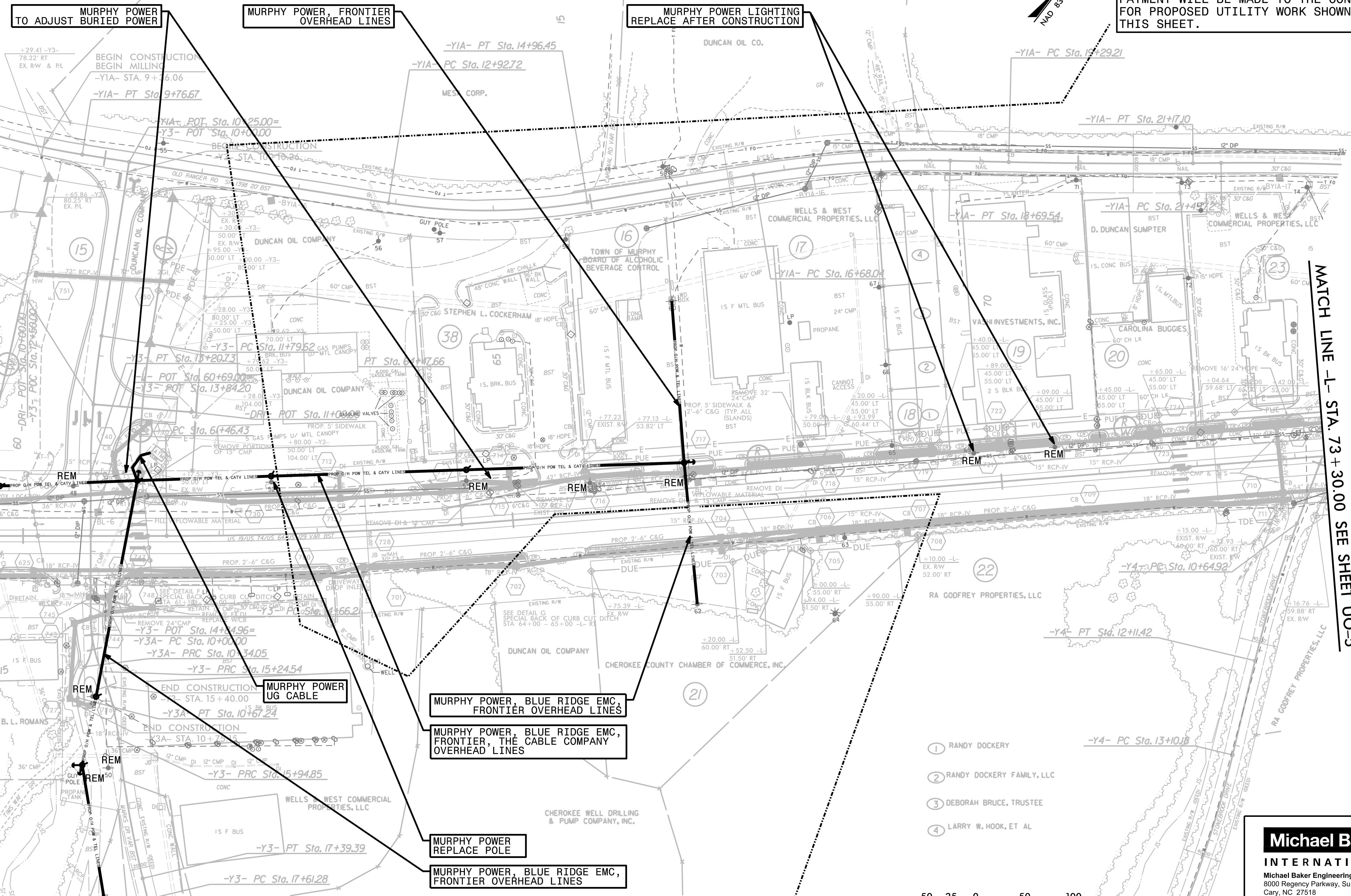
UTILITIES BY OTHERS

ALL PROPOSED UTILITY WORK SHOWN ON THIS SHEET WILL BE DONE BY OTHERS. NO PAYMENT WILL BE MADE TO THE CONTRACTOR FOR PROPOSED UTILITY WORK SHOWN ON THIS SHEET.



MATCH LINE -L- STA. 59 + 75.00 SEE SHEET UO-3

MATCH LINE -L- STA. 73 + 30.00 SEE SHEET UO-5



MURPHY POWER TO ADJUST BURIED POWER

MURPHY POWER, FRONTIER OVERHEAD LINES

MURPHY POWER LIGHTING REPLACE AFTER CONSTRUCTION

MURPHY POWER UG CABLE

MURPHY POWER, BLUE RIDGE EMC, FRONTIER OVERHEAD LINES

MURPHY POWER, BLUE RIDGE EMC, FRONTIER, THE CABLE COMPANY OVERHEAD LINES

MURPHY POWER REPLACE POLE

MURPHY POWER, BLUE RIDGE EMC, FRONTIER OVERHEAD LINES

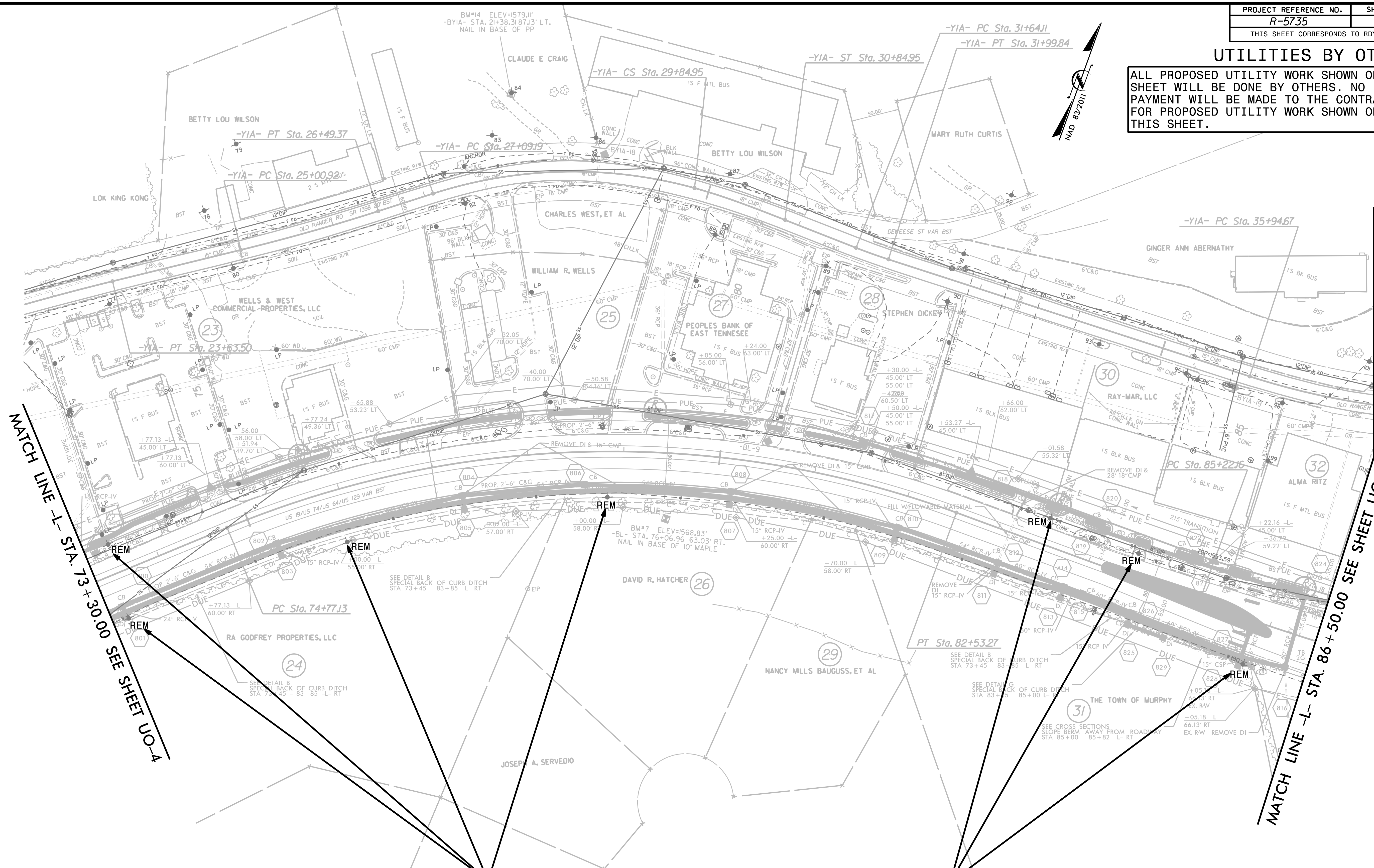
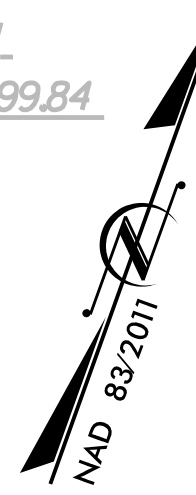
- ① RANDY DOCKERY
- ② RANDY DOCKERY FAMILY, LLC
- ③ DEBORAH BRUCE, TRUSTEE
- ④ LARRY W. HOOK, ET AL



Michael Baker INTERNATIONAL
 Michael Baker Engineering, Inc.
 8000 Regency Parkway, Suite 600
 Cary, NC 27518
 919-463-5488

UTILITIES BY OTHERS

ALL PROPOSED UTILITY WORK SHOWN ON THIS SHEET WILL BE DONE BY OTHERS. NO PAYMENT WILL BE MADE TO THE CONTRACTOR FOR PROPOSED UTILITY WORK SHOWN ON THIS SHEET.

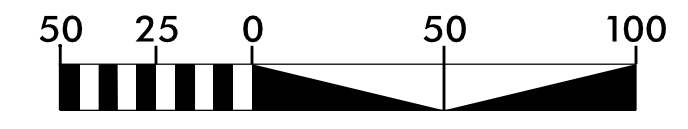


MATCH LINE -L- STA. 73+30.00 SEE SHEET UO-4

MATCH LINE -L- STA. 86+50.00 SEE SHEET UO-6

MURPHY POWER LIGHTING
REPLACE AFTER CONSTRUCTION

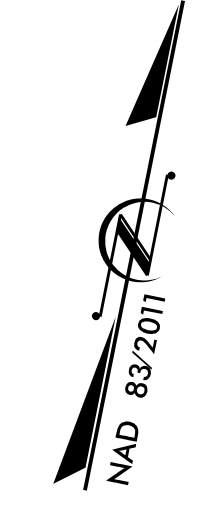
MURPHY POWER LIGHTING
REPLACE AFTER CONSTRUCTION



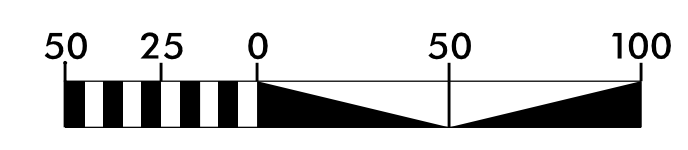
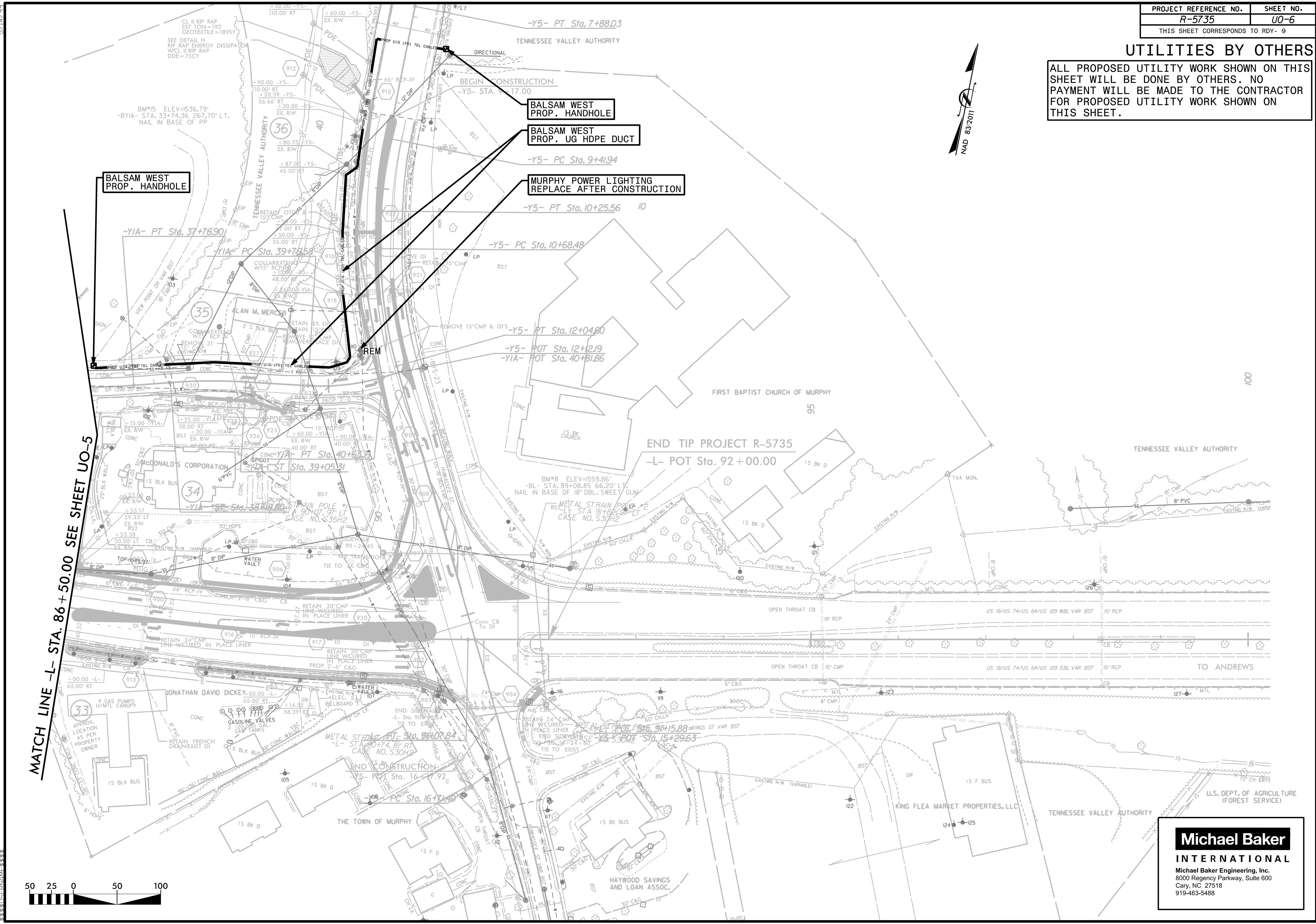
Michael Baker
INTERNATIONAL
Michael Baker Engineering, Inc.
8000 Regency Parkway, Suite 600
Cary, NC 27518
919-463-5488

UTILITIES BY OTHERS

ALL PROPOSED UTILITY WORK SHOWN ON THIS SHEET WILL BE DONE BY OTHERS. NO PAYMENT WILL BE MADE TO THE CONTRACTOR FOR PROPOSED UTILITY WORK SHOWN ON THIS SHEET.



MATCH LINE -L- STA. 86 + 50.00 SEE SHEET U0-5



Michael Baker
INTERNATIONAL
 Michael Baker Engineering, Inc.
 8000 Regency Parkway, Suite 600
 Cary, NC 27518
 919-463-5488