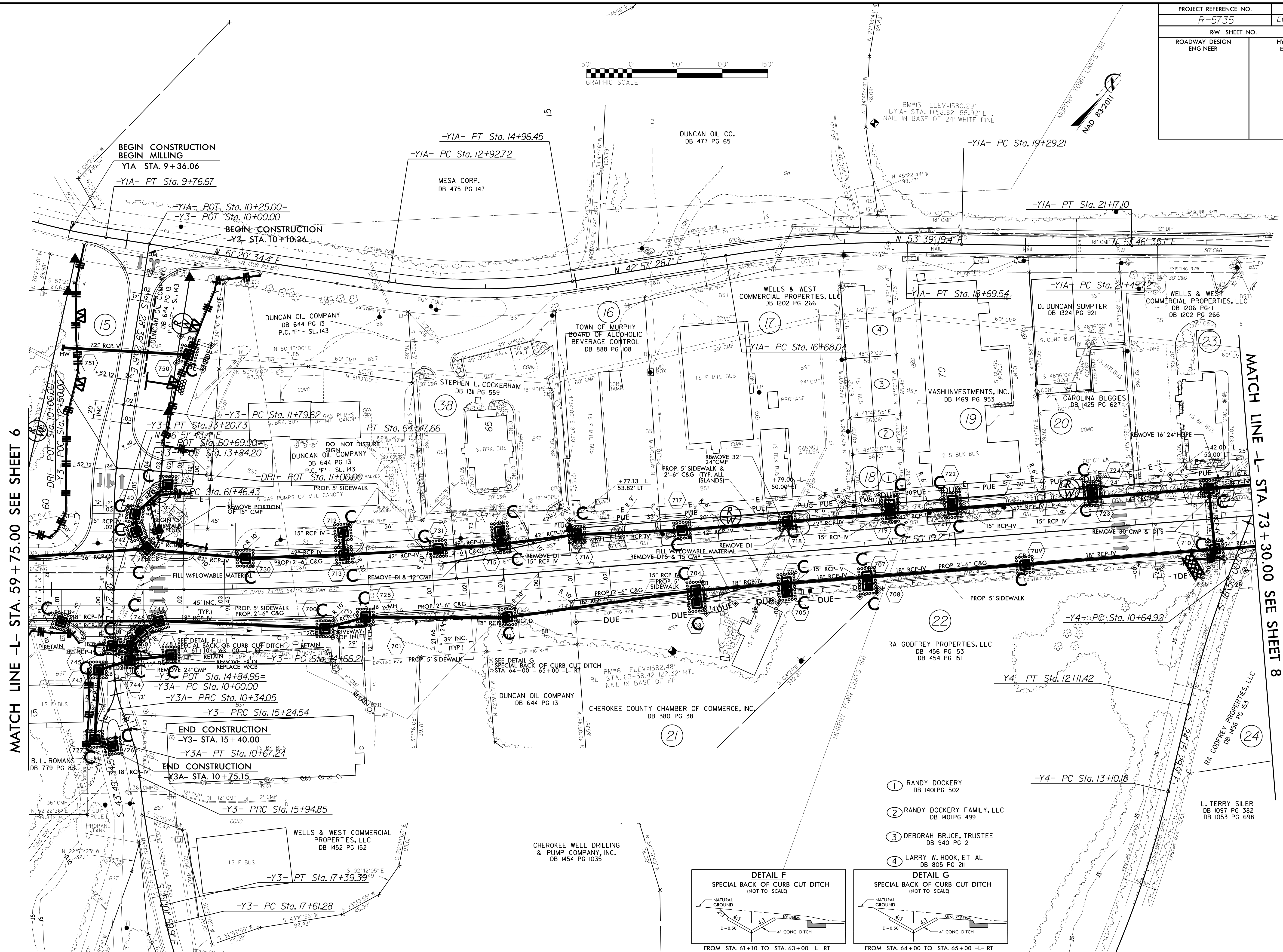
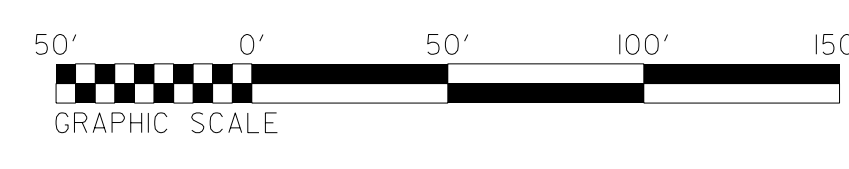


PROJECT REFERENCE NO. R-5735		SHEET NO. EC-13/CONST.07	
RW SHEET NO.			
ROADWAY DESIGN ENGINEER		HYDRAULICS ENGINEER	



MATCH LINE -L- STA. 59 + 75.00 SEE SHEET 6

MATCH LINE -L- STA. 73 + 30.00 SEE SHEET 8

REVISIONS

BEGIN CONSTRUCTION
BEGIN MILLING
-Y1A- STA. 9+36.06
-Y1A- PT Sta. 9+76.67

BEGIN CONSTRUCTION
-Y3- STA. 10+10.26

-Y3- PT Sta. 13+20.73
-Y3- PC Sta. 11+79.62
-Y3- POT Sta. 13+84.20

-Y3A- POT Sta. 14+84.96=
-Y3A- PC Sta. 10+00.00
-Y3A- PRC Sta. 10+34.05
-Y3- PRC Sta. 15+24.54

END CONSTRUCTION
-Y3- STA. 15+40.00
-Y3A- PT Sta. 10+67.24
END CONSTRUCTION
-Y3A- STA. 10+75.15

-Y3- PRC Sta. 15+94.85

-Y3- PC Sta. 17+61.28

-Y1A- PT Sta. 14+96.45
-Y1A- PC Sta. 12+92.72

PT Sta. 64+47.66

-Y3- PC Sta. 14+66.21

-Y1A- PC Sta. 19+29.21

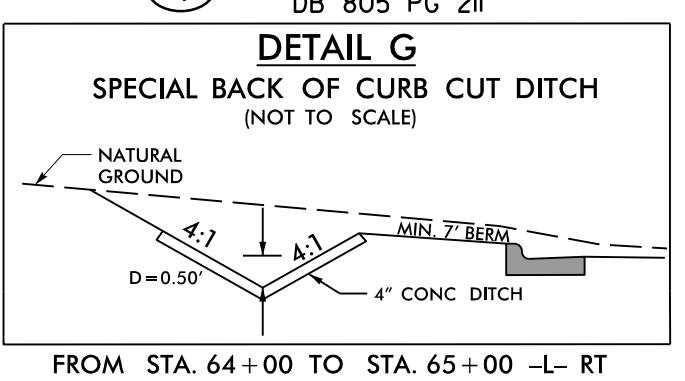
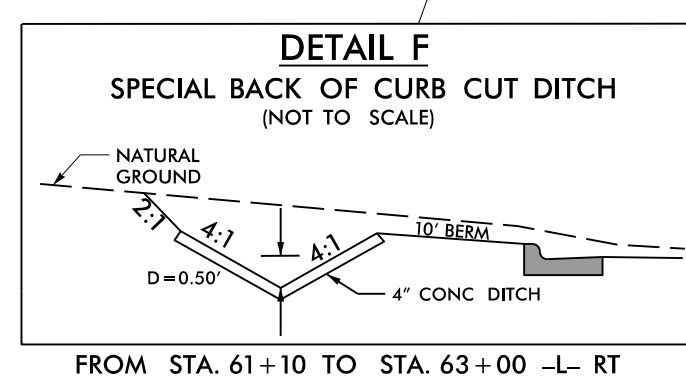
-Y1A- PT Sta. 18+69.54

-Y1A- PC Sta. 21+45.72

-Y4- PC Sta. 10+64.92

-Y4- PT Sta. 12+11.42

-Y4- PC Sta. 13+10.18



- ① RANDY DOCKERY
DB 1401 PG 502
- ② RANDY DOCKERY FAMILY, LLC
DB 1401 PG 499
- ③ DEBORAH BRUCE, TRUSTEE
DB 940 PG 2
- ④ LARRY W. HOOK, ET AL
DB 805 PG 211

8/17/99