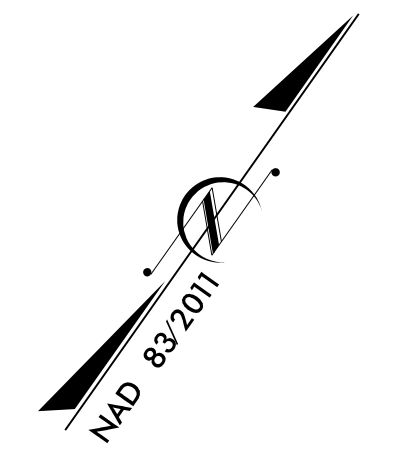
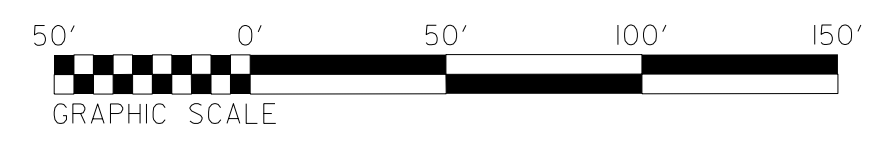
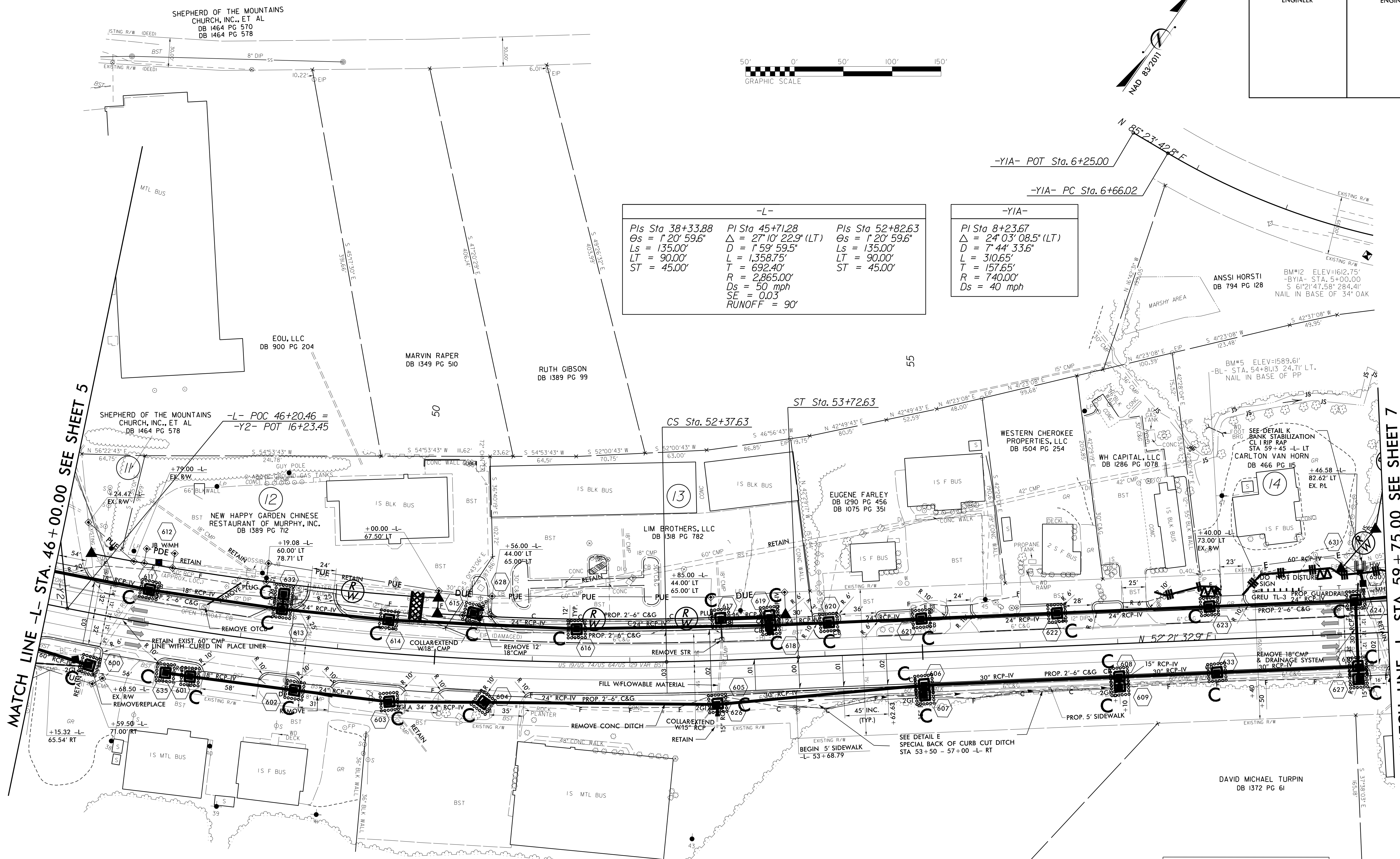


PROJECT REFERENCE NO. R-5735		SHEET NO. EC-12/CONST.06	
RW SHEET NO.			
ROADWAY DESIGN ENGINEER		HYDRAULICS ENGINEER	



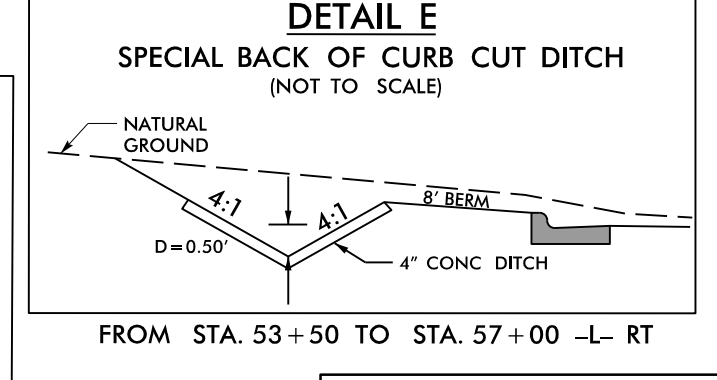
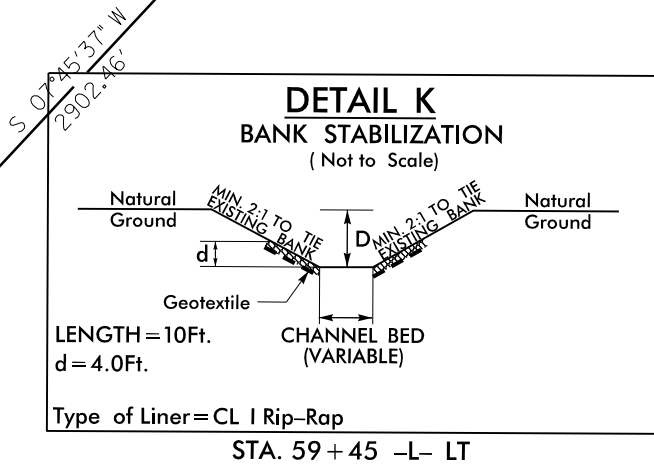
-L-		
PIs Sta 38+33.88	PI Sta 45+71.28	PIs Sta 52+82.63
Δs = 1'20" 59.6"	Δ = 27'10" 22.9" (LT)	Δs = 1'20" 59.6"
Ls = 135.00'	D = 1'59" 59.5"	Ls = 135.00'
LT = 90.00'	L = 1,358.75'	LT = 90.00'
ST = 45.00'	T = 692.40'	ST = 45.00'
	R = 2,865.00'	
	Ds = 50 mph	
	SE = 0.03	
	RUNOFF = 90'	

-YIA-
PI Sta 8+23.67
Δ = 2'03" 08.5" (LT)
D = 7'44" 33.6"
L = 310.65'
T = 157.65'
R = 740.00'
Ds = 40 mph



MATCH LINE -L- STA. 46+00.00 SEE SHEET 5

MATCH LINE -L- STA. 59+75.00 SEE SHEET 7



FOR -L- PROFILE SEE SHEET 11

REVISIONS

8/17/99

SECTION 100' LONG

37
MARTHA MCHAN
DB 1387 PG 633
DB 1087 PG 165

SHEPHERD OF THE MOUNTAINS
CHURCH, INC., ET AL
DB 1464 PG 570
DB 1464 PG 578

EOU, LLC
DB 900 PG 204

MARVIN RAPER
DB 1349 PG 510

RUTH GIBSON
DB 1389 PG 99

SHEPHERD OF THE MOUNTAINS
CHURCH, INC., ET AL
DB 1464 PG 578

-L- POC 46+20.46 =
-Y2- POT 16+23.45

NEW HAPPY GARDEN CHINESE
RESTAURANT OF MURPHY, INC.
DB 1389 PG 712

LIM BROTHERS, LLC
DB 1318 PG 782

EUGENE FARLEY
DB 1290 PG 456
DB 1075 PG 351

WESTERN CHEROKEE
PROPERTIES, LLC
DB 1504 PG 254

WH CAPITAL, LLC
DB 1286 PG 1078

CARLTON VAN HORN
DB 466 PG 115

DAVID MICHAEL TURPIN
DB 1372 PG 61