

**This electronic collection of documents is provided  
for the convenience of the user  
and is Not a Certified Document –**

**The documents contained herein were originally issued  
and sealed by the individuals whose names and license  
numbers appear on each page, on the dates appearing  
with their signature on that page.**

**This file or an individual page  
shall not be considered a certified document.**



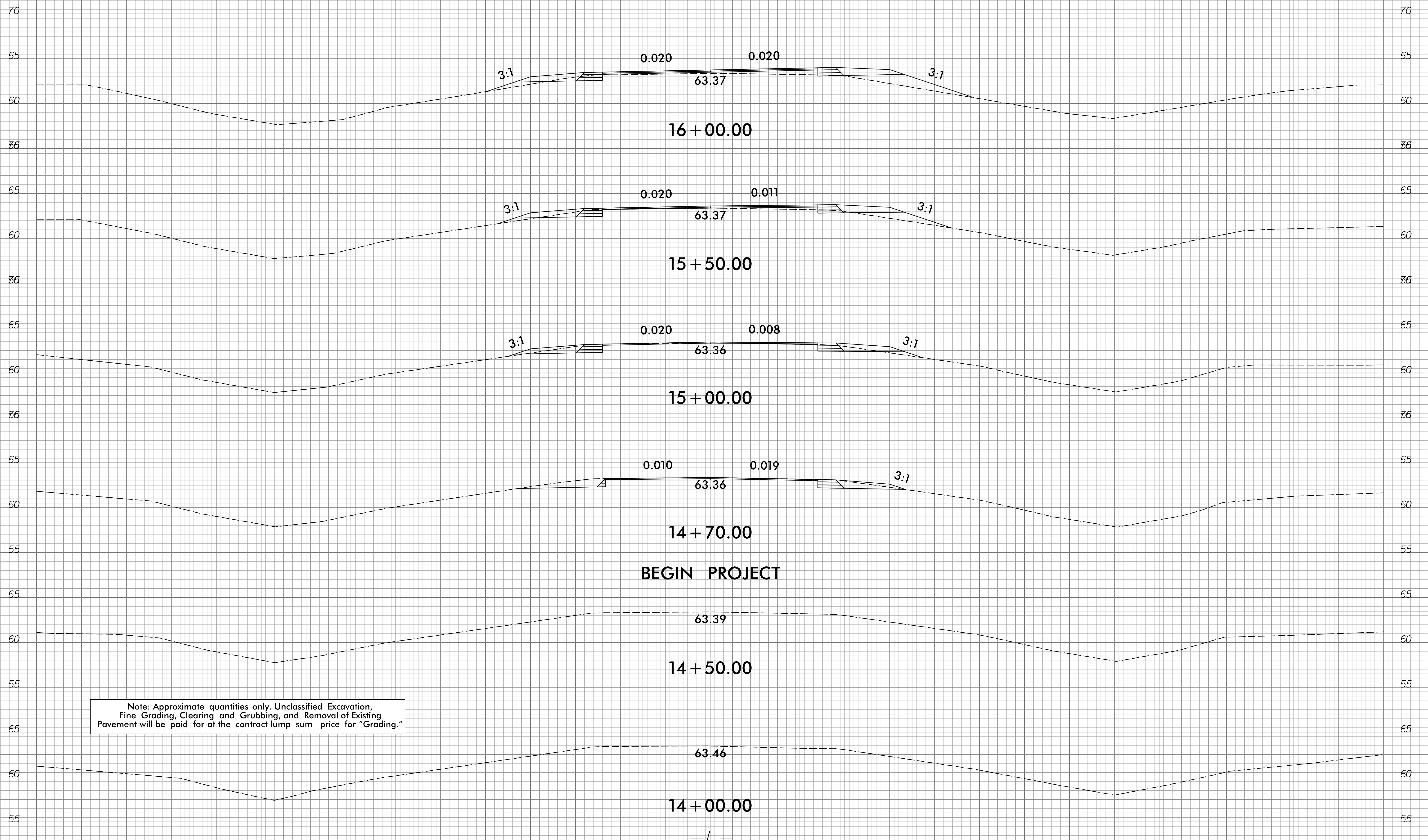
6/23/16



PROJ. REFERENCE NO.  
B-4438

SHEET NO.  
X-1

75 70 65 60 55 50 45 40 35 30 25 20 15 10 5 0 5 10 15 20 25 30 35 40 45 50 55 60 65 70 75



Note: Approximate quantities only. Unclassified Excavation, Fine Grading, Clearing and Grubbing, and Removal of Existing Pavement will be paid for at the contract lump sum price for "Grading."

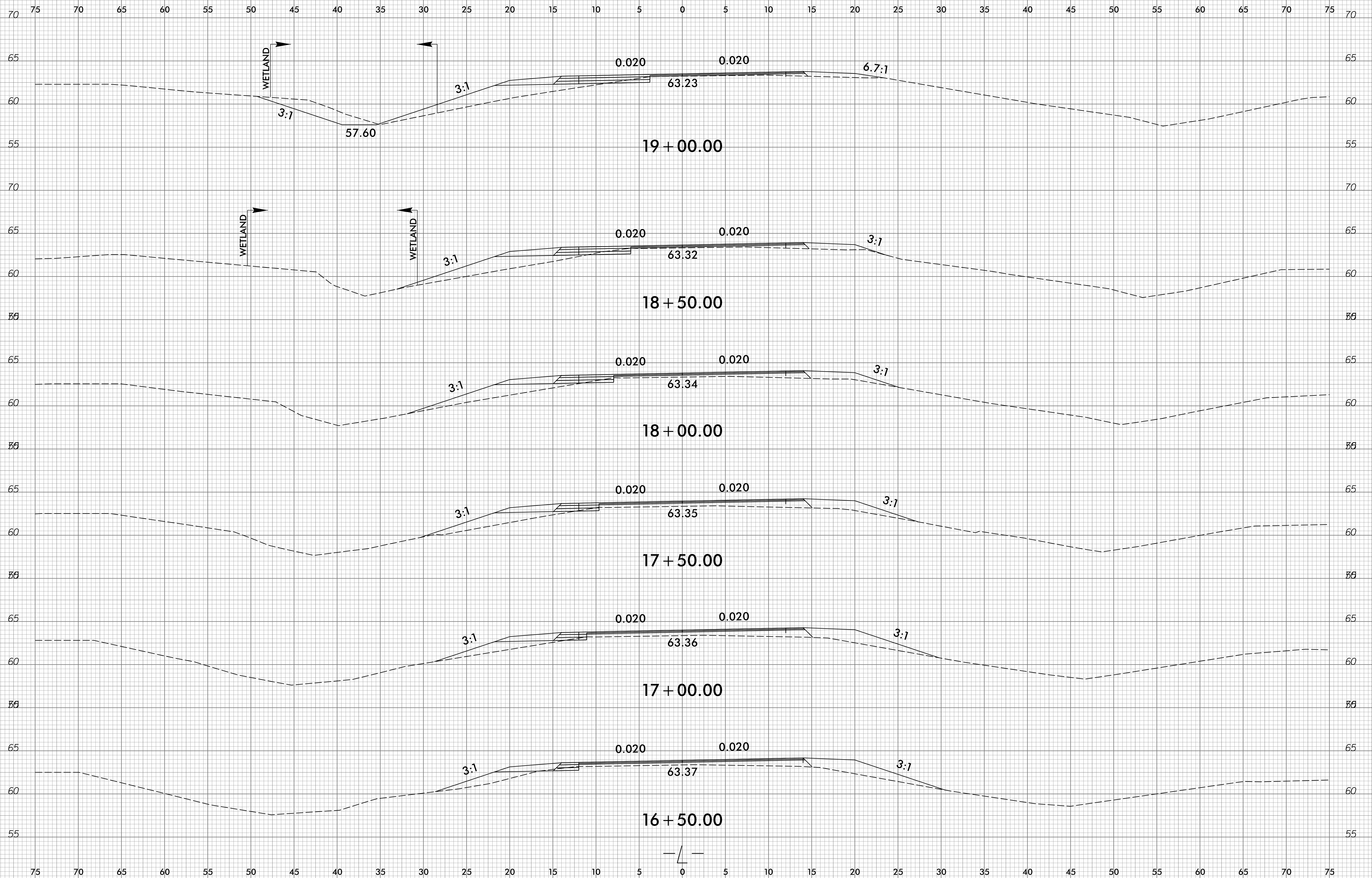
2/22/2019 9:29:01 AM C:\CAD\B4438\Roadway\Corridor\Mode\ing\B4438\_rdy\_L\_xpl.dgn

75 70 65 60 55 50 45 40 35 30 25 20 15 10 5 0 5 10 15 20 25 30 35 40 45 50 55 60 65 70 75

6/23/16



PROJ. REFERENCE NO. B-4438	SHEET NO. X-2
-------------------------------	------------------



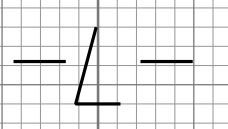
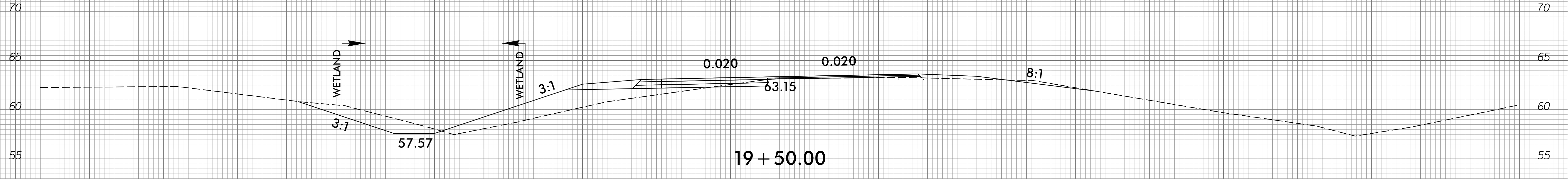
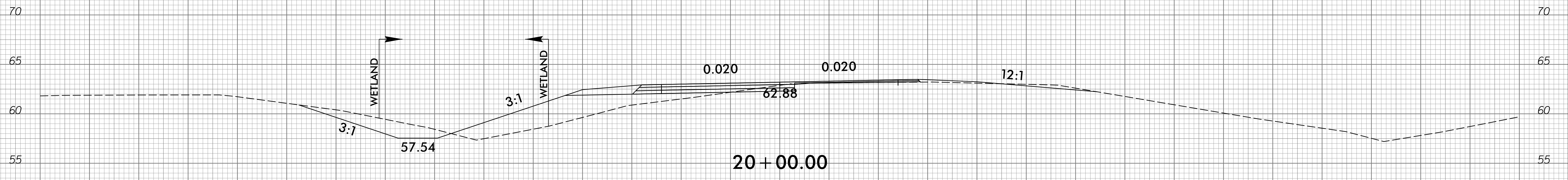
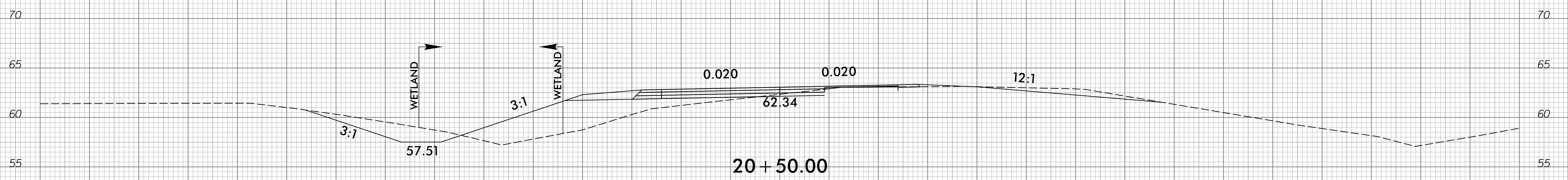
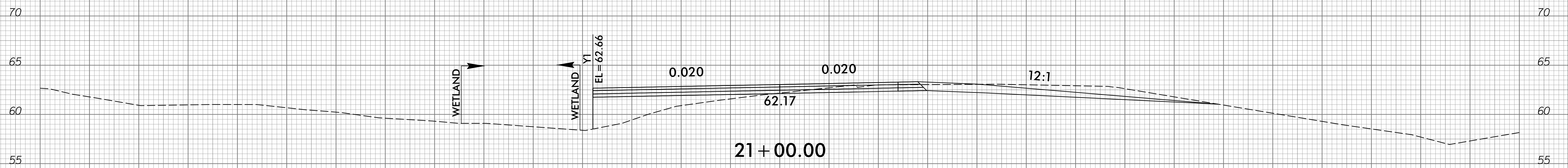
2/22/2019 9:29:01 AM C:\CAD\B4438\Roadway\Corridor\Modeling\B4438\_rdy\_L\_xpl.dgn

6/23/16



PROJ. REFERENCE NO.	SHEET NO.
B-4438	X-3

75 70 65 60 55 50 45 40 35 30 25 20 15 10 5 0 5 10 15 20 25 30 35 40 45 50 55 60 65 70 75



75 70 65 60 55 50 45 40 35 30 25 20 15 10 5 0 5 10 15 20 25 30 35 40 45 50 55 60 65 70 75

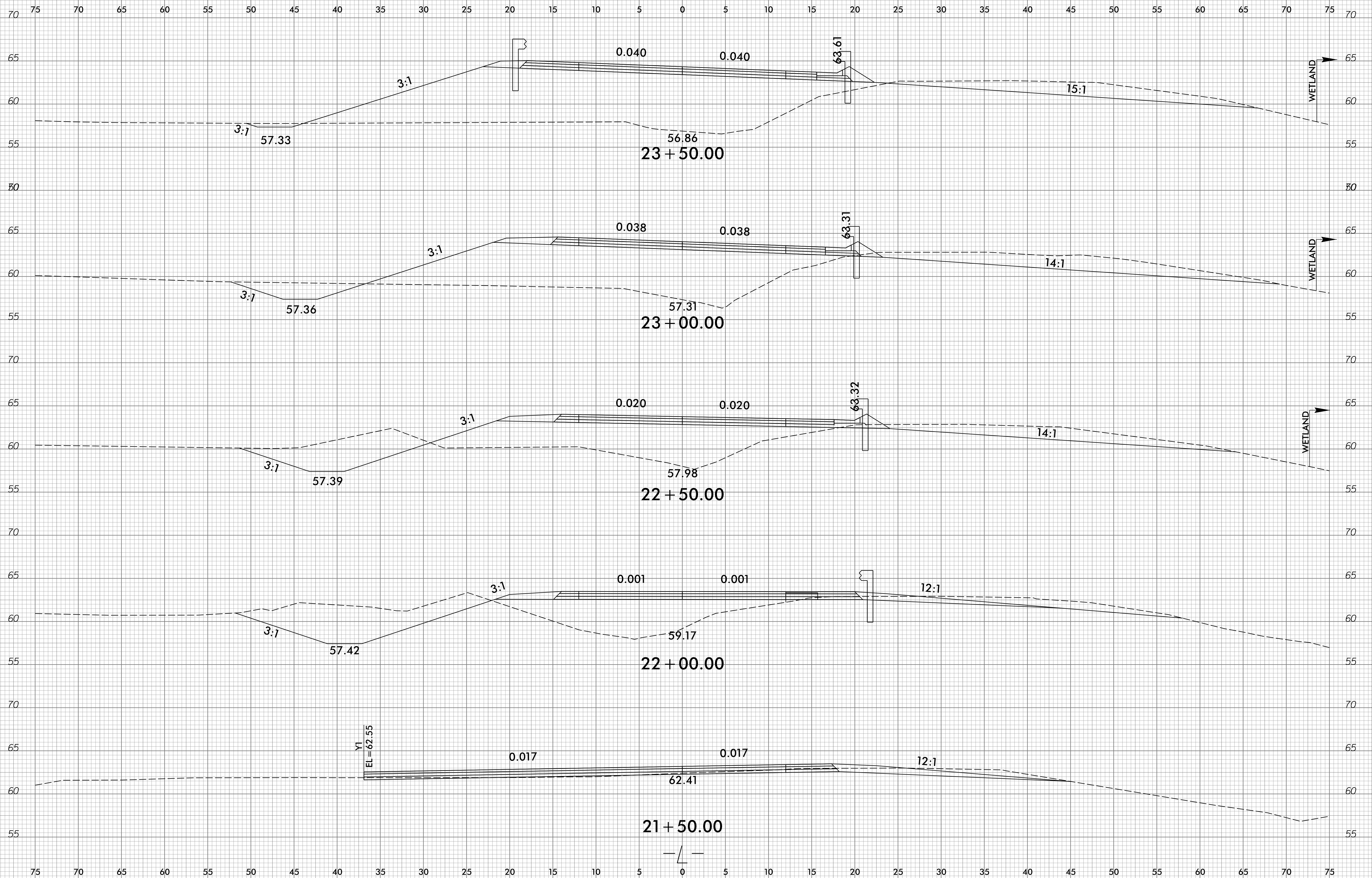
2/22/2019  
 G:\FA\9729-01\CADD\B4438\Roadway\Corridor\Modelling\B4438\_rdy\_L\_xpl.dgn  
 chulman

6/23/16



PROJ. REFERENCE NO.  
B-4438

SHEET NO.  
X-4



2/22/2019 9:29:01 AM C:\CAD\B4438\Roadway\Corridor\Modeling\B4438\_rdy.L\_xpl.dgn

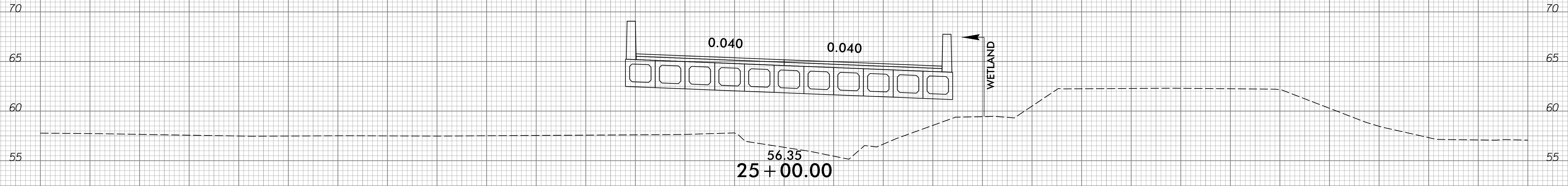
6/23/16



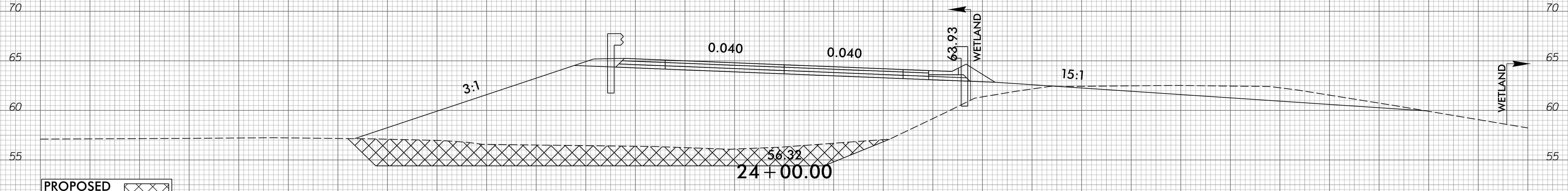
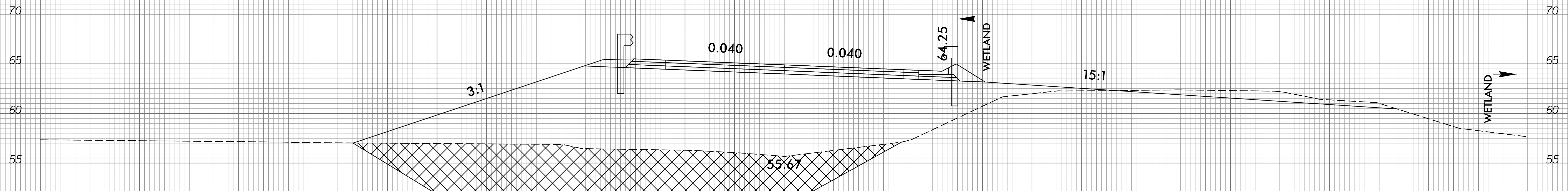
PROJ. REFERENCE NO.  
B-4438

SHEET NO.  
X-5

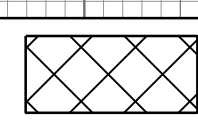
75 70 65 60 55 50 45 40 35 30 25 20 15 10 5 0 5 10 15 20 25 30 35 40 45 50 55 60 65 70 75



BEGIN BRIDGE



PROPOSED UNDERCUT



2/22/2019  
D:\FA\9729-01\CADD\B4438\Roadway\Corridor\Modeling\B4438\_rdy\_L\_xpl.dgn  
chulman

75 70 65 60 55 50 45 40 35 30 25 20 15 10 5 0 5 10 15 20 25 30 35 40 45 50 55 60 65 70 75



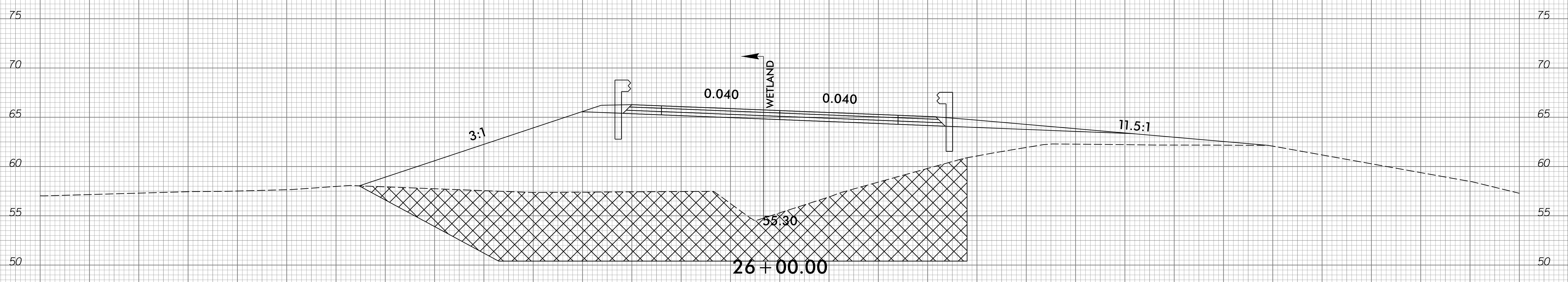
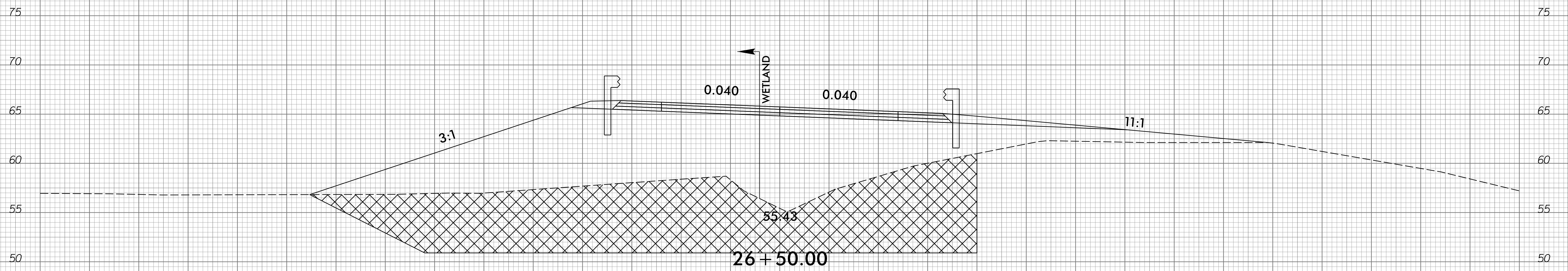
6/23/16



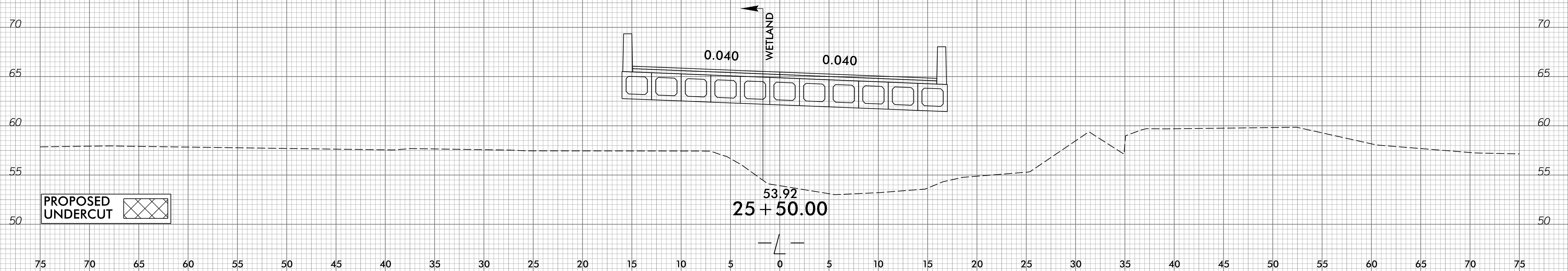
PROJ. REFERENCE NO.  
B-4438

SHEET NO.  
X-6

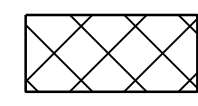
75 70 65 60 55 50 45 40 35 30 25 20 15 10 5 0 5 10 15 20 25 30 35 40 45 50 55 60 65 70 75



END BRIDGE



PROPOSED UNDERCUT



75 70 65 60 55 50 45 40 35 30 25 20 15 10 5 0 5 10 15 20 25 30 35 40 45 50 55 60 65 70 75

2/22/2019  
D:\FA\9729-01\CADD\B4438\Roadway\Corridor\Modeling\B4438\_rdy\_L\_xpl.dgn

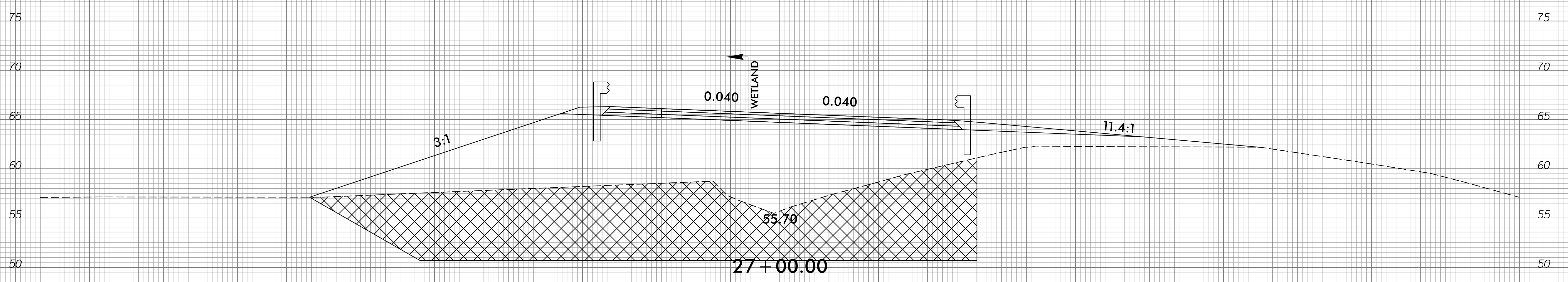
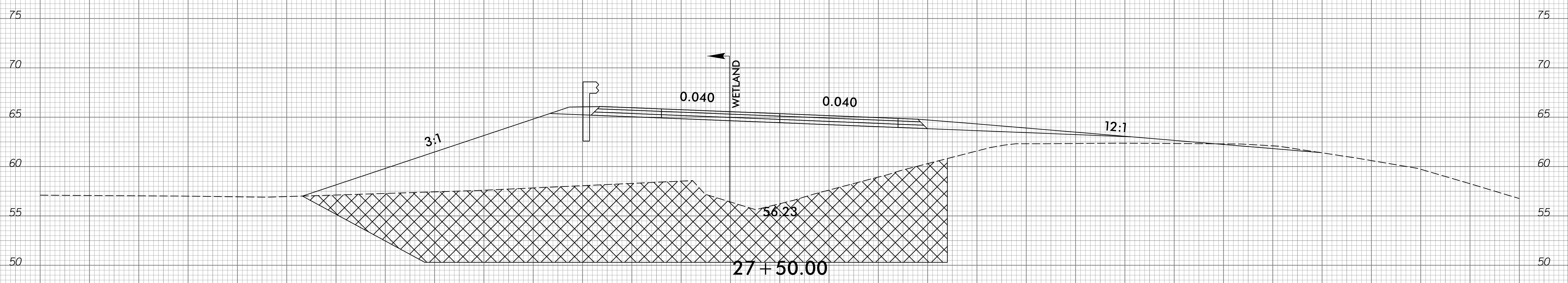
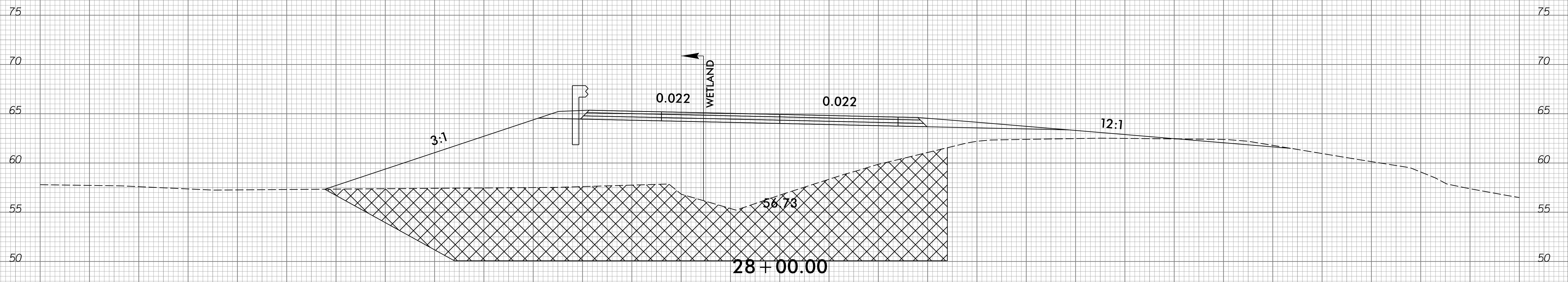


6/23/16

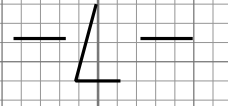


PROJ. REFERENCE NO.	SHEET NO.
B-4438	X-7

75 70 65 60 55 50 45 40 35 30 25 20 15 10 5 0 5 10 15 20 25 30 35 40 45 50 55 60 65 70 75



PROPOSED UNDERCUT



75 70 65 60 55 50 45 40 35 30 25 20 15 10 5 0 5 10 15 20 25 30 35 40 45 50 55 60 65 70 75

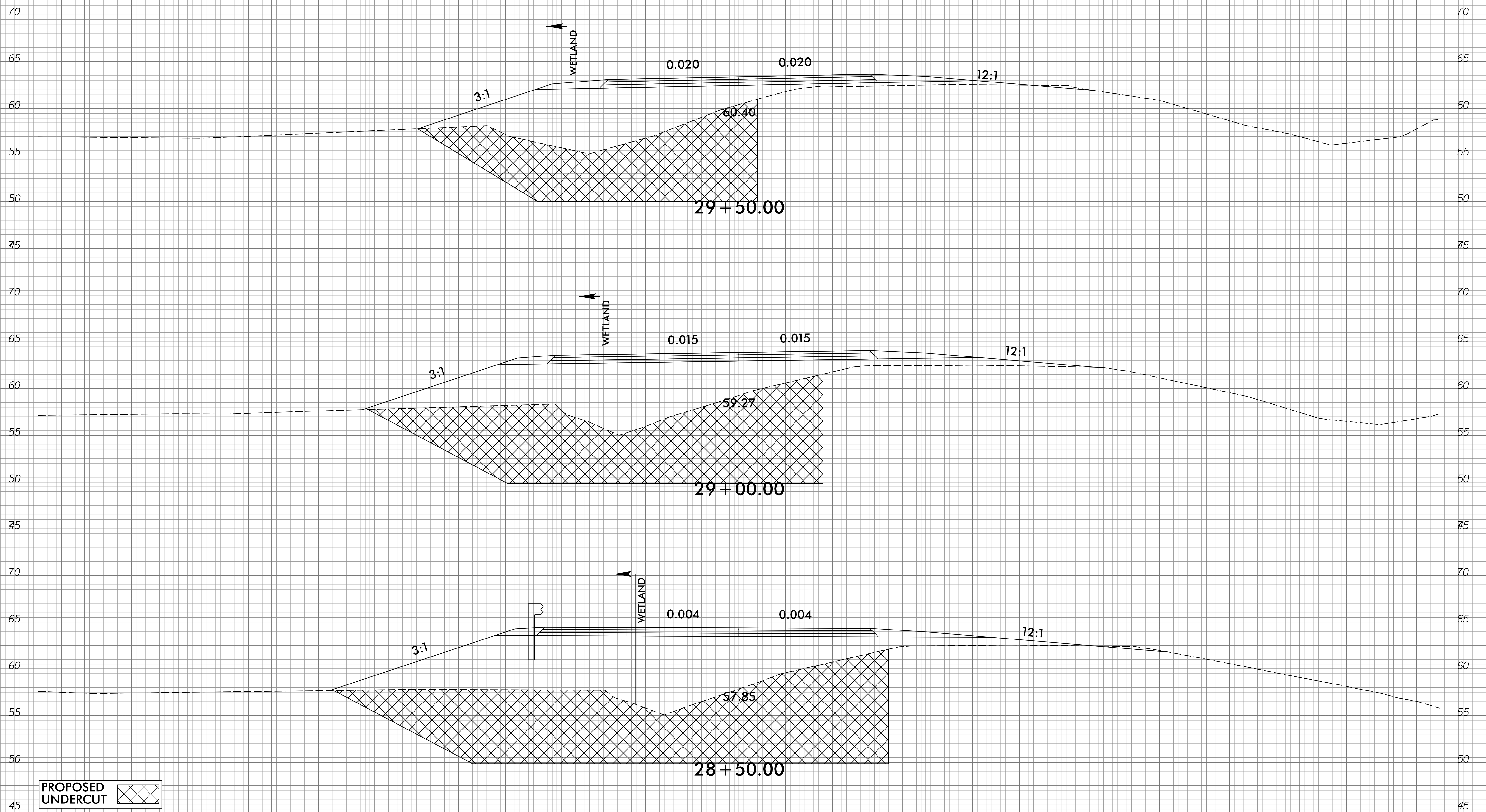
2/22/2019 9:17:29 AM C:\CAD\B4438\Roadway\Corridor\Modeling\B4438\_rdy\_L\_xpl.dgn

6/23/16

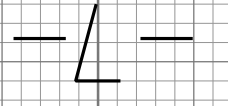


PROJ. REFERENCE NO.	SHEET NO.
B-4438	X-8

75 70 65 60 55 50 45 40 35 30 25 20 15 10 5 0 5 10 15 20 25 30 35 40 45 50 55 60 65 70 75



PROPOSED UNDERCUT



2/22/2019  
 G:\FA\9729-01\CADD\B4438\Roadway\Corridor\Modeling\B4438\_rdy\_L\_xpl.dgn  
 chulman

75 70 65 60 55 50 45 40 35 30 25 20 15 10 5 0 5 10 15 20 25 30 35 40 45 50 55 60 65 70 75

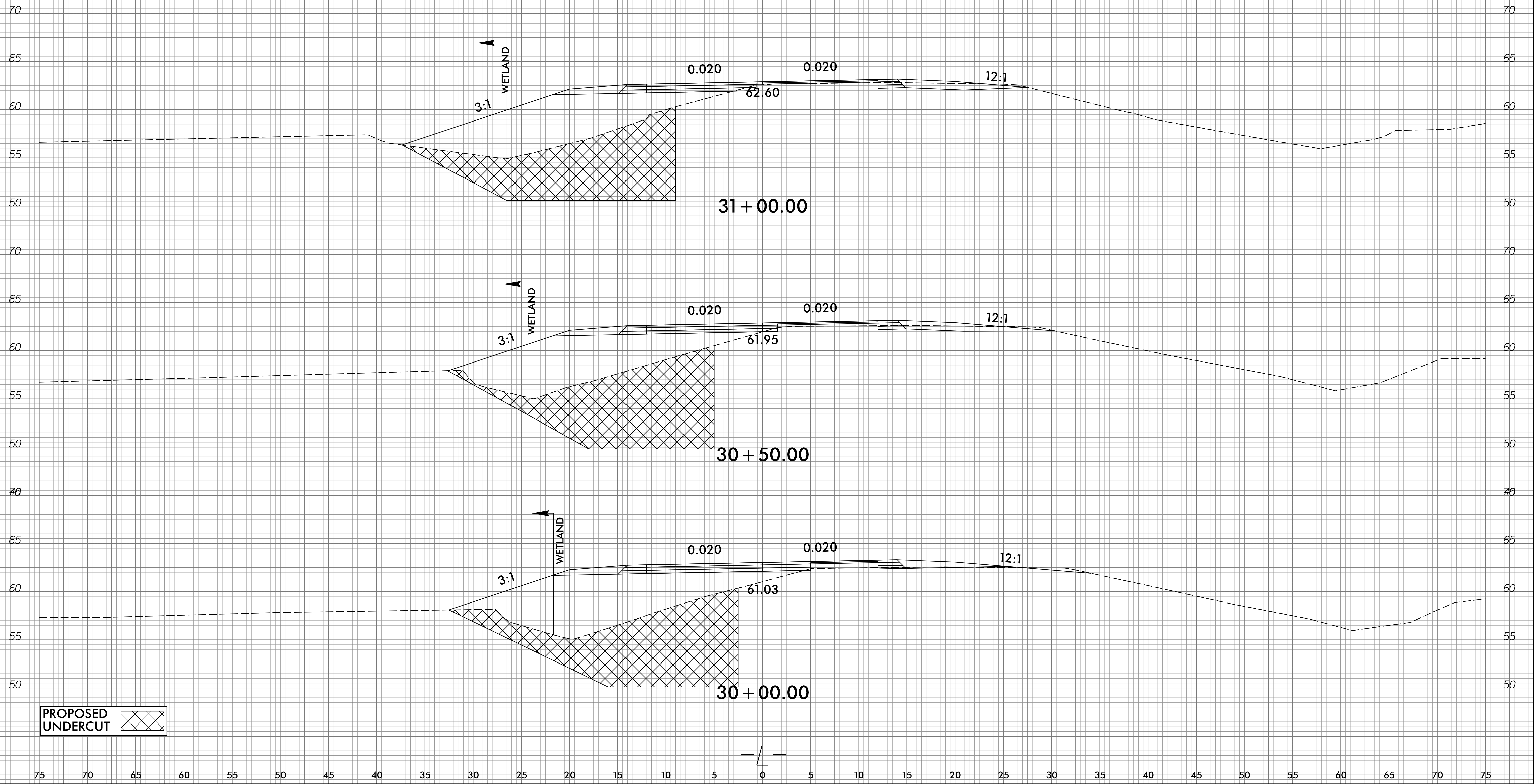
6/23/16



PROJ. REFERENCE NO.  
B-4438

SHEET NO.  
X-9

75 70 65 60 55 50 45 40 35 30 25 20 15 10 5 0 5 10 15 20 25 30 35 40 45 50 55 60 65 70 75



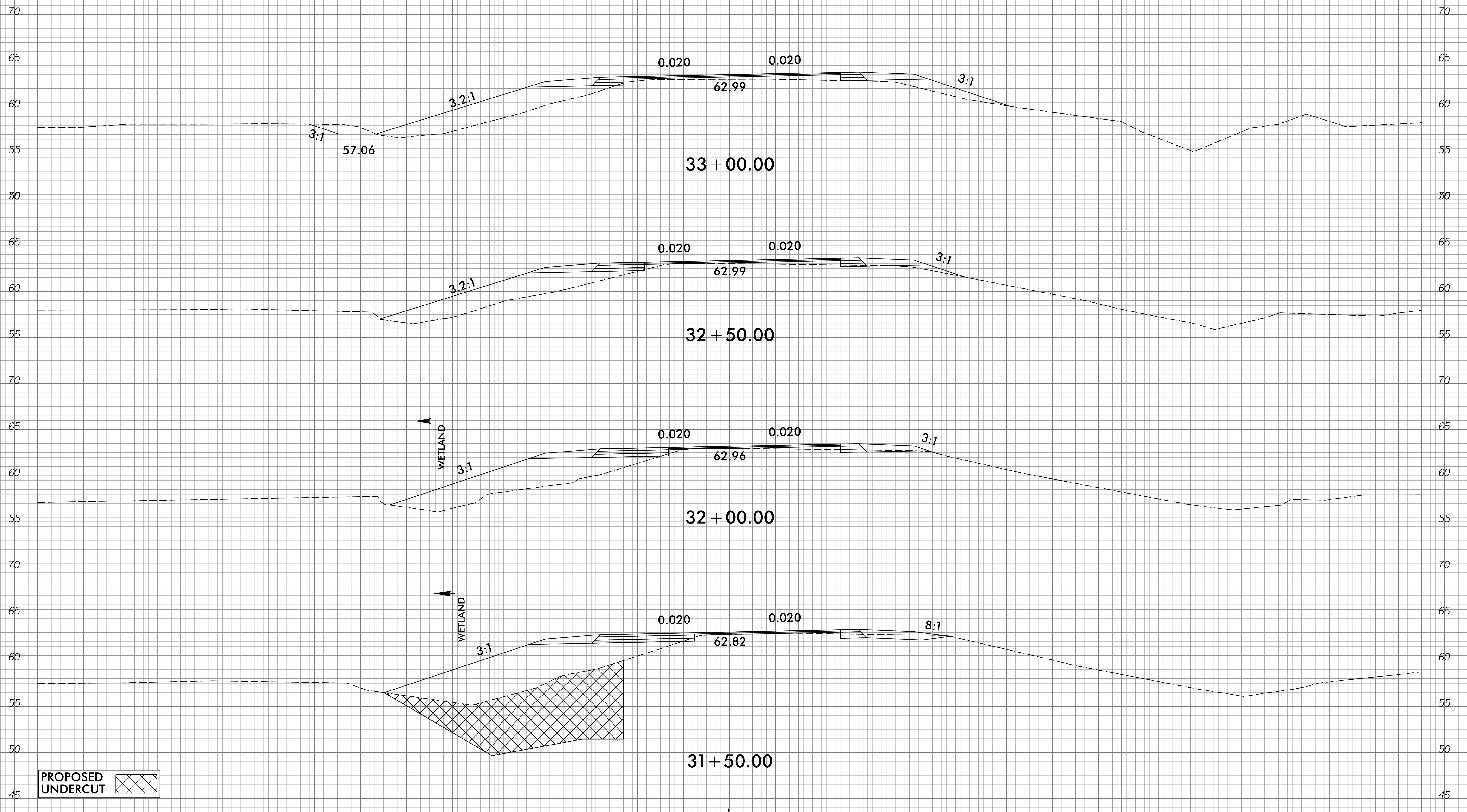
2/22/2019  
D:\FA\9729-01\CADD\B4438\Roadway\Corridor\Modeling\B4438\_rdy\_L\_xpl.dgn  
chulman

6/23/16



PROJ. REFERENCE NO.	SHEET NO.
B-4438	X-10

75 70 65 60 55 50 45 40 35 30 25 20 15 10 5 0 5 10 15 20 25 30 35 40 45 50 55 60 65 70 75



PROPOSED UNDERCUT

2/22/2019  
 G:\FA\9729-01\CADD\B4438\Roadway\Corridor\Modeling\B4438\_rdy\_L\_xpl.dgn  
 chulman

75 70 65 60 55 50 45 40 35 30 25 20 15 10 5 0 5 10 15 20 25 30 35 40 45 50 55 60 65 70 75

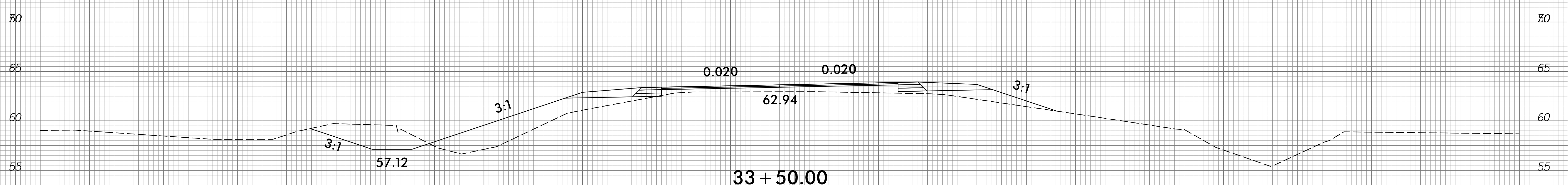
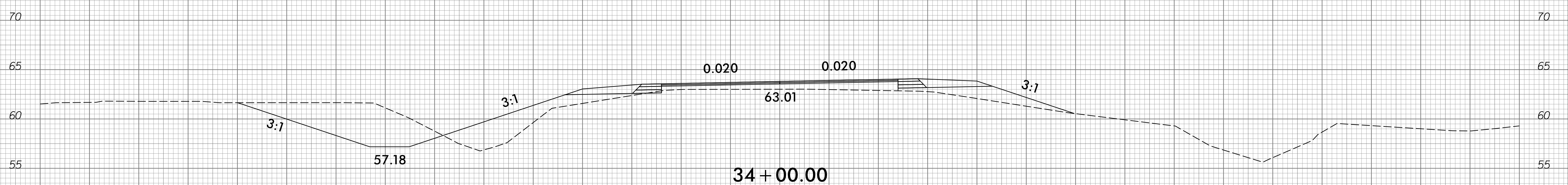
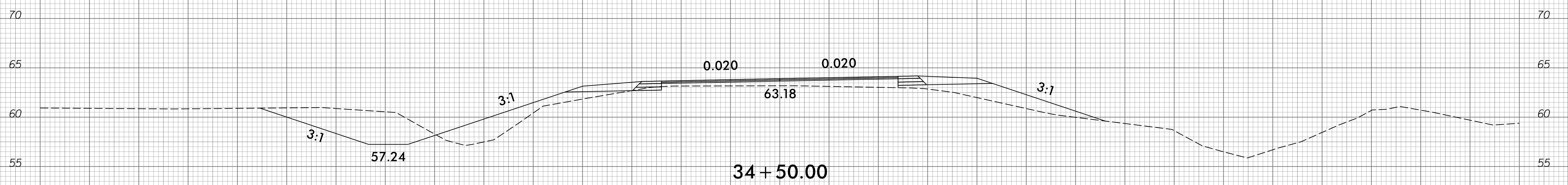
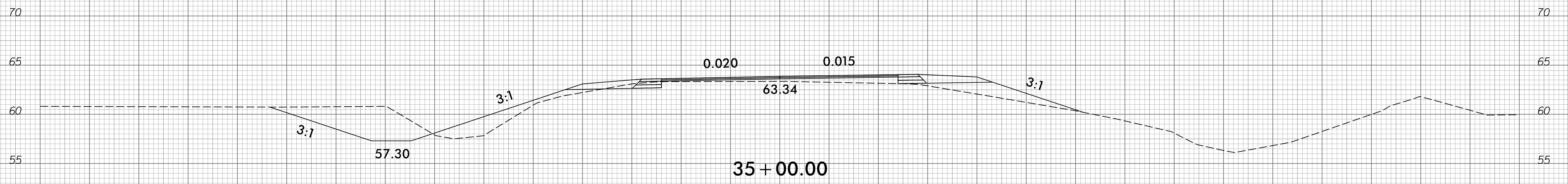
6/23/16



PROJ. REFERENCE NO.  
B-4438

SHEET NO.  
X-11

75 70 65 60 55 50 45 40 35 30 25 20 15 10 5 0 5 10 15 20 25 30 35 40 45 50 55 60 65 70 75



75 70 65 60 55 50 45 40 35 30 25 20 15 10 5 0 5 10 15 20 25 30 35 40 45 50 55 60 65 70 75

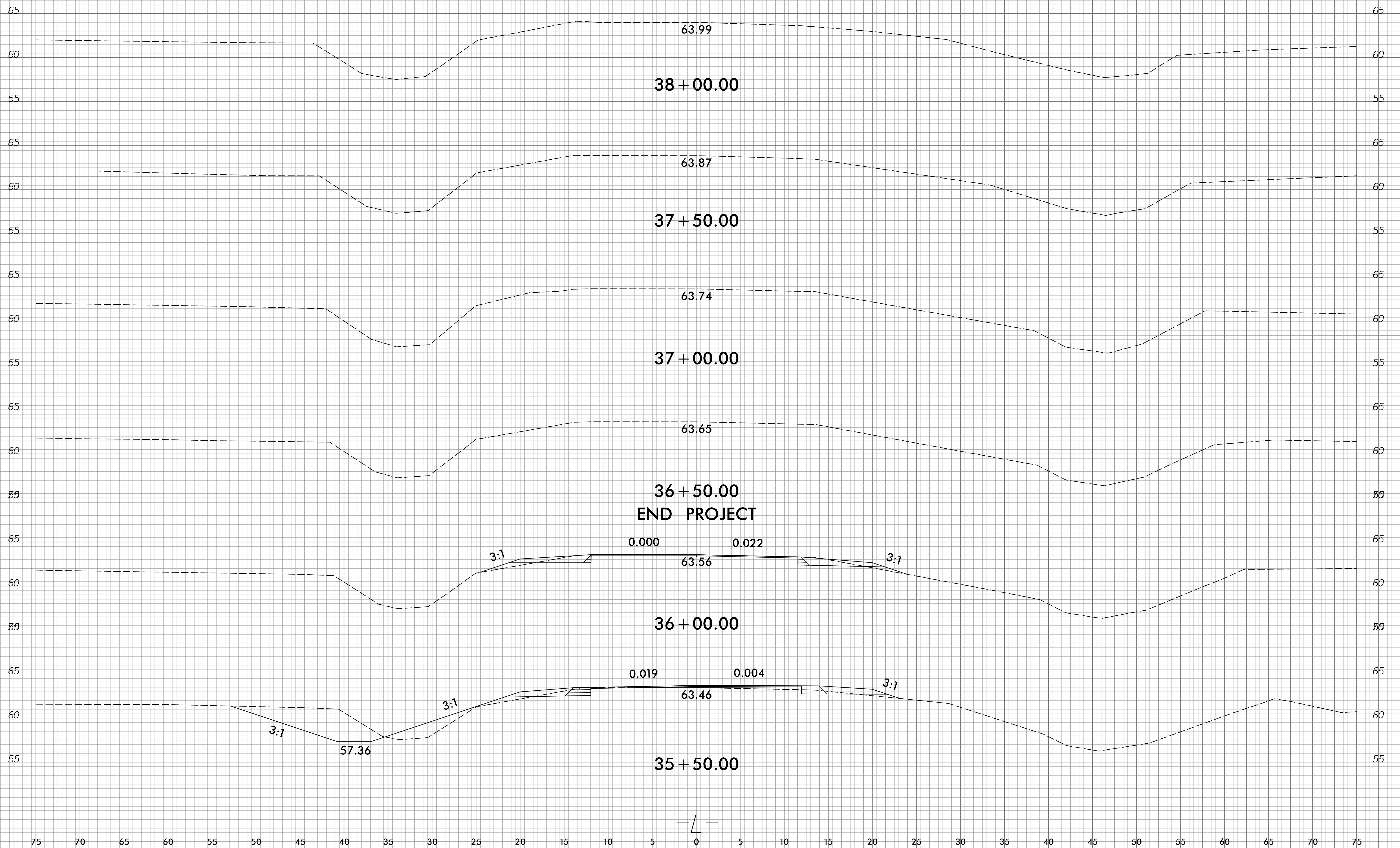
2/22/2019 9:17:29 AM C:\CAD\B4438\Roadway\Corridor\Modeling\B4438\_rdy\_L\_xpl.dgn

6/23/16



PROJ. REFERENCE NO.	SHEET NO.
B-4438	X-12

75 70 65 60 55 50 45 40 35 30 25 20 15 10 5 0 5 10 15 20 25 30 35 40 45 50 55 60 65 70 75



2/22/2019  
D:\FA\9729-01\CADD\B4438\Roadway\Corridor\Modeling\B4438\_rdy\_L\_xpl.dgn  
chulman

75 70 65 60 55 50 45 40 35 30 25 20 15 10 5 0 5 10 15 20 25 30 35 40 45 50 55 60 65 70 75



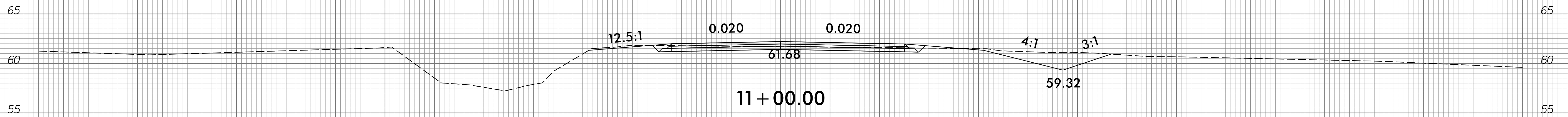
6/23/16



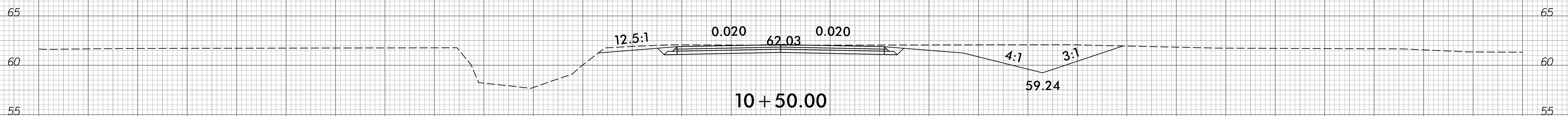
PROJ. REFERENCE NO.	SHEET NO.
B-4438	X-13

75 70 65 60 55 50 45 40 35 30 25 20 15 10 5 0 5 10 15 20 25 30 35 40 45 50 55 60 65 70 75

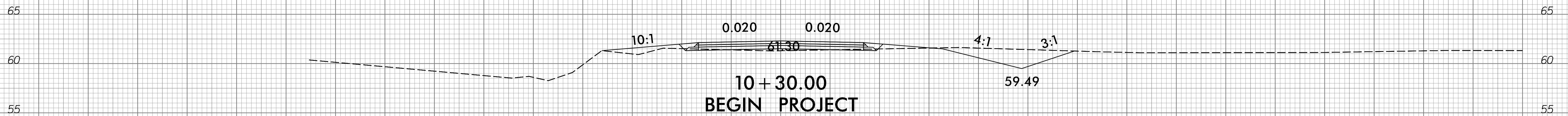
END PROJECT



10 + 50.00



10 + 30.00  
BEGIN PROJECT



-Y/-

75 70 65 60 55 50 45 40 35 30 25 20 15 10 5 0 5 10 15 20 25 30 35 40 45 50 55 60 65 70 75

2/22/2019 9:29:01 AM C:\CAD\B4438\Roadway\Corridor\Modeling\B4438\_rdy\_Y1\_xpl.dgn