

**This electronic collection of documents is provided
for the convenience of the user
and is Not a Certified Document –**

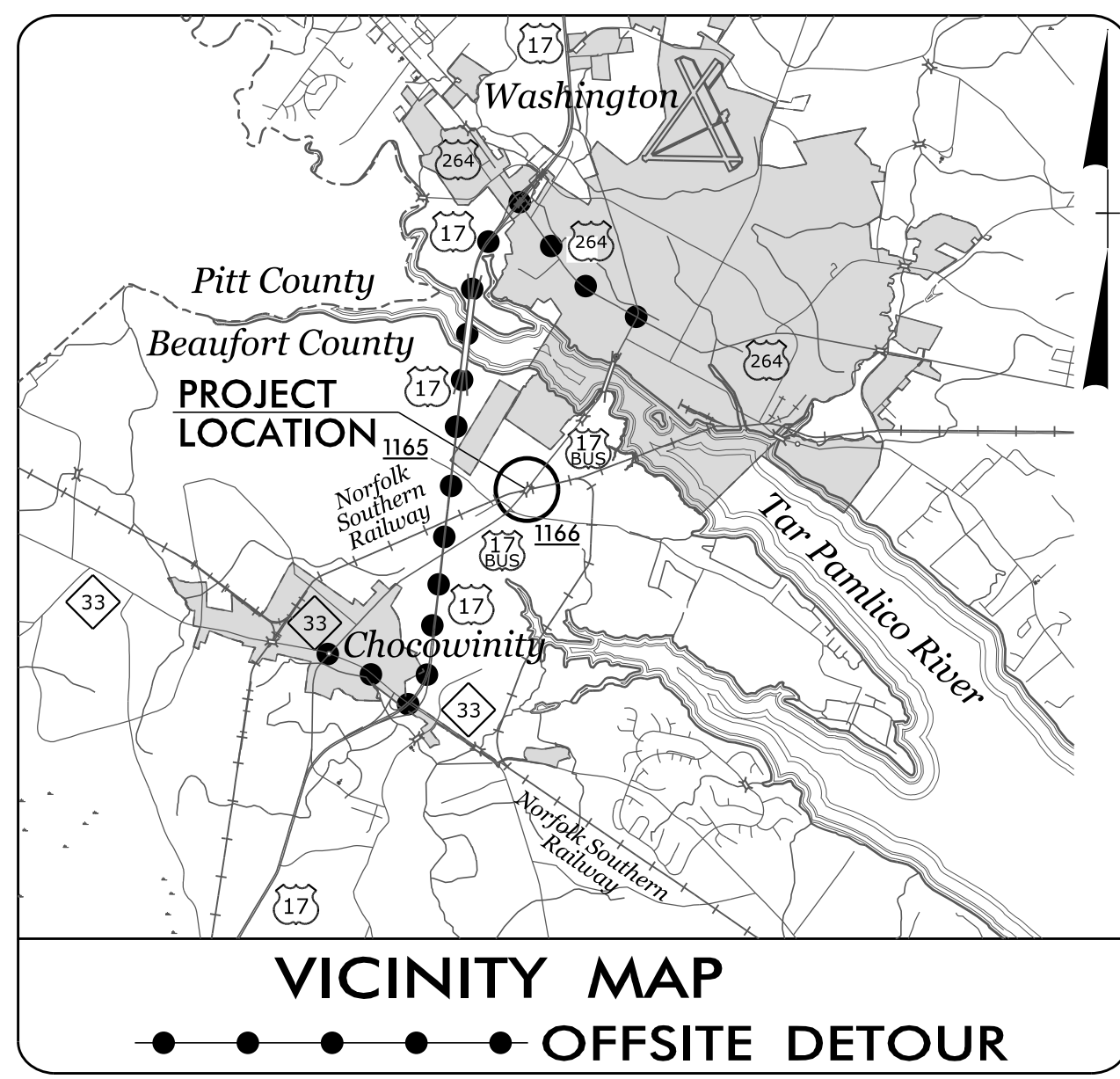
**The documents contained herein were originally issued
and sealed by the individuals whose names and license
numbers appear on each page, on the dates appearing
with their signature on that page.**

**This file or an individual page
shall not be considered a certified document.**

09.08/99

TIP PROJECT: B-5302

See Sheet 1-A For Index of Sheets



25% PLANS SUBMITTAL

STATE OF NORTH CAROLINA
DIVISION OF HIGHWAYS

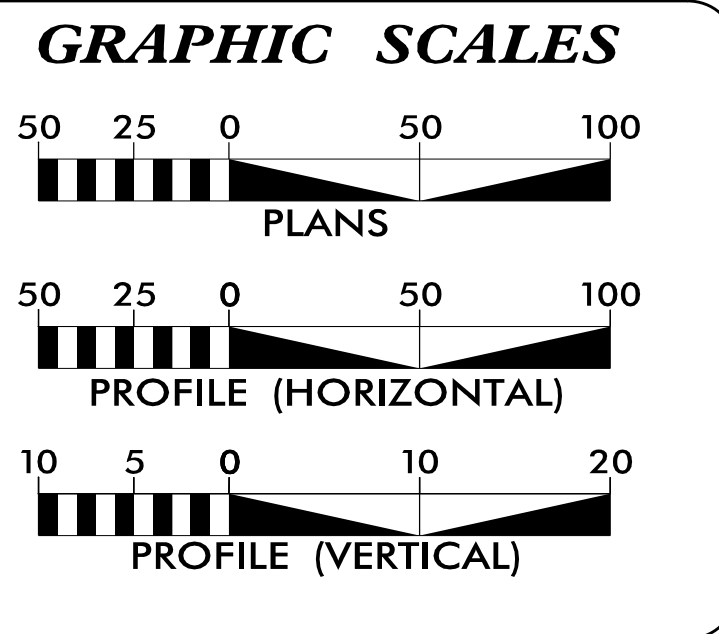
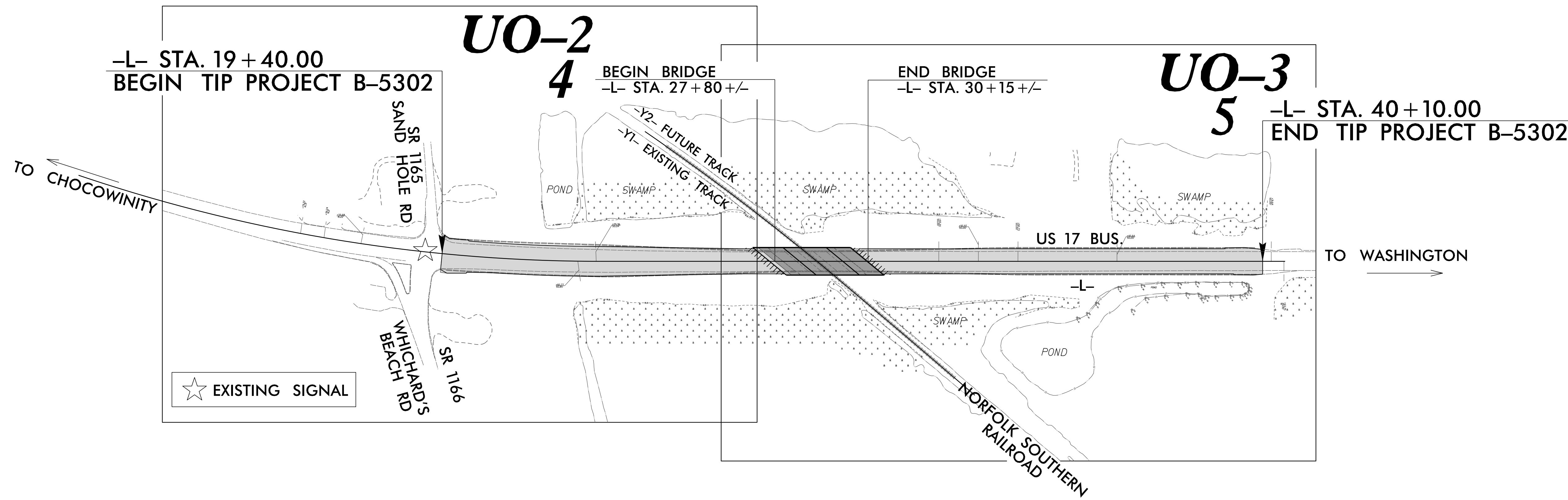
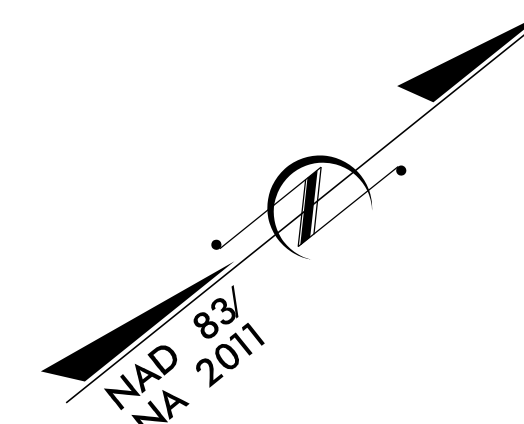
**UTILITIES BY OTHERS PLANS
BEAUFORT COUNTY**

**LOCATION: REPLACE BRIDGE NO. 3 OVER NORFOLK
SOUTHERN RAILROAD ON US 17 BUS.**

**TYPE OF WORK: POWER, COMMUNICATION, WATER,
AND SEWER RELOCATION**

T.I.P. NO.	SHEET NO.
B-5302	UO-1

NOTE:
ALL UTILITY WORK SHOWN ON THIS SHEET WILL BE DONE BY OTHERS. NO PAYMENT WILL BE MADE TO THE CONTRACTOR FOR UTILITY WORK SHOWN ON THIS SHEET.



INDEX OF SHEETS

SHEET NO.:	DESCRIPTION:
UO-1	TITLE SHEET
UO-2 THRU UO-3	UBO PLAN SHEETS

UTILITY OWNERS WITH CONFLICTS

(A) POWER - DUKE ENERGY
(B) COMMUNICATION - CENTURYLINK
(C) COMMUNICATION - SUDDENLINK
(D) WATER & SEWER - CITY OF WASHINGTON
(E) SEWER - TOWN OF CHOCOWINITY

PREPARED IN THE OFFICE OF:

WETHERILL ENGINEERING

1223 Jones Franklin Rd. Raleigh, N.C. 27606
License No. F-0377
Bus: 919.851.8077 Fax: 919.851.8107

John D. Schriener, PLS PROJECT UTILITY COORDINATOR

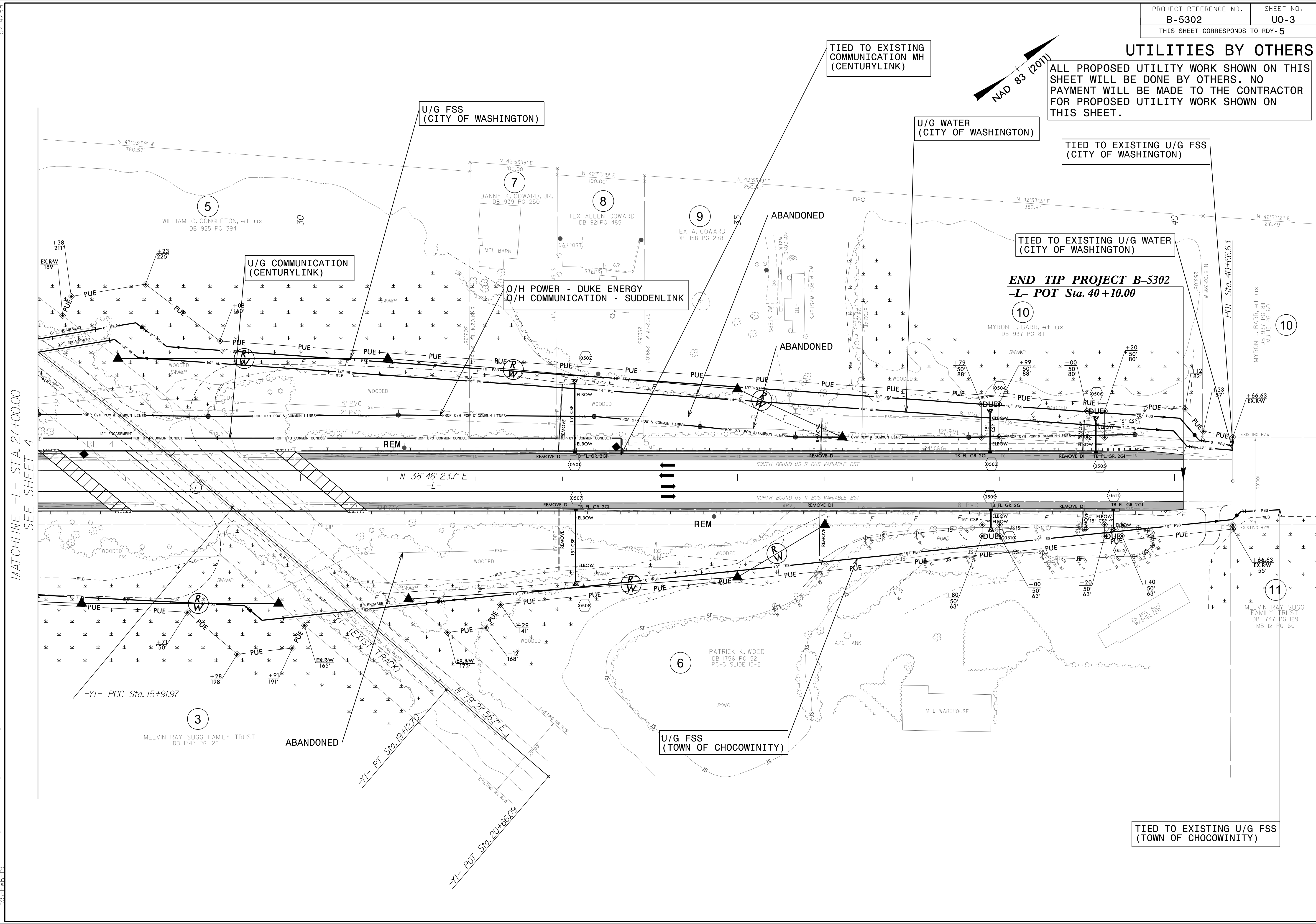
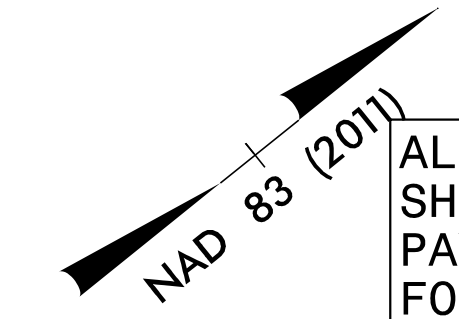
**DIVISION OF HIGHWAYS
UTILITIES UNIT**
1555 MAIL SERVICES CENTER
RALEIGH NC 27699-1555
PHONE (919) 707-6690
FAX (919) 250-4151

Nabil Hamdan UTILITIES REGIONAL ENGINEER
Kelvin Martin, EI UTILITIES ENGINEER
Kyle Pleasant UTILITIES AREA COORDINATOR
Dayton Martin UTILITIES COORDINATOR

\$\$\$\$\$ SYSTEMS \$\$\$
\$\$\$\$\$ DOWN \$\$\$
\$\$\$\$\$ USERNAME \$\$\$

UTILITIES BY OTHERS

ALL PROPOSED UTILITY WORK SHOWN ON THIS SHEET WILL BE DONE BY OTHERS. NO PAYMENT WILL BE MADE TO THE CONTRACTOR FOR PROPOSED UTILITY WORK SHOWN ON THIS SHEET.



MATCHLINE -L- STA. 27+00.00
SEE SHEET 4

5/14/99
3:09:26 PM J:\BO\Proj\B5302\ut_rdy5_U03_psh.dgn
3/15/2011 10:03:00 AM

TIED TO EXISTING COMMUNICATION MH (CENTURYLINK)

U/G FSS (CITY OF WASHINGTON)

U/G WATER (CITY OF WASHINGTON)

TIED TO EXISTING U/G FSS (CITY OF WASHINGTON)

U/G COMMUNICATION (CENTURYLINK)

O/H POWER - DUKE ENERGY
O/H COMMUNICATION - SUDDENLINK

END TIP PROJECT B-5302
-L- POT Sta. 40+10.00

U/G FSS (TOWN OF CHOCOWINITY)

TIED TO EXISTING U/G FSS (TOWN OF CHOCOWINITY)

-YI- PCC Sta. 15+91.97

-YI- PT Sta. 19+12.70

-YI- POT Sta. 20+66.09

POT Sta. 40+66.63

+66.63 EX.R/W

+66.63 EX.R/W

+66.63 EX.R/W

+66.63 EX.R/W

+66.63 EX.R/W

+66.63 EX.R/W

+66.63 EX.R/W

+66.63 EX.R/W

+66.63 EX.R/W

+66.63 EX.R/W

+66.63 EX.R/W

+66.63 EX.R/W

+66.63 EX.R/W

+66.63 EX.R/W

+66.63 EX.R/W

+66.63 EX.R/W

+66.63 EX.R/W

+66.63 EX.R/W

+66.63 EX.R/W

+66.63 EX.R/W

+66.63 EX.R/W

+66.63 EX.R/W

+66.63 EX.R/W

+66.63 EX.R/W

+66.63 EX.R/W

+66.63 EX.R/W

+66.63 EX.R/W

+66.63 EX.R/W

+66.63 EX.R/W

+66.63 EX.R/W

+66.63 EX.R/W

+66.63 EX.R/W

+66.63 EX.R/W

+66.63 EX.R/W

+66.63 EX.R/W

+66.63 EX.R/W

+66.63 EX.R/W

+66.63 EX.R/W

+66.63 EX.R/W

+66.63 EX.R/W

+66.63 EX.R/W

+66.63 EX.R/W

+66.63 EX.R/W

+66.63 EX.R/W

+66.63 EX.R/W

+66.63 EX.R/W

+66.63 EX.R/W

+66.63 EX.R/W

+66.63 EX.R/W

+66.63 EX.R/W

+66.63 EX.R/W

+66.63 EX.R/W

+66.63 EX.R/W

+66.63 EX.R/W

+66.63 EX.R/W

+66.63 EX.R/W

+66.63 EX.R/W

+66.63 EX.R/W

+66.63 EX.R/W

+66.63 EX.R/W

+66.63 EX.R/W

+66.63 EX.R/W

+66.63 EX.R/W

+66.63 EX.R/W

+66.63 EX.R/W

+66.63 EX.R/W

+66.63 EX.R/W

+66.63 EX.R/W

+66.63 EX.R/W

+66.63 EX.R/W

+66.63 EX.R/W

+66.63 EX.R/W

+66.63 EX.R/W

+66.63 EX.R/W

+66.63 EX.R/W

+66.63 EX.R/W

+66.63 EX.R/W

+66.63 EX.R/W

+66.63 EX.R/W

+66.63 EX.R/W

+66.63 EX.R/W

+66.63 EX.R/W

+66.63 EX.R/W

+66.63 EX.R/W

+66.63 EX.R/W

+66.63 EX.R/W

+66.63 EX.R/W

+66.63 EX.R/W

+66.63 EX.R/W

+66.63 EX.R/W

+66.63 EX.R/W

+66.63 EX.R/W

+66.63 EX.R/W

+66.63 EX.R/W

+66.63 EX.R/W

+66.63 EX.R/W

+66.63 EX.R/W

+66.63 EX.R/W

+66.63 EX.R/W

+66.63 EX.R/W

+66.63 EX.R/W

+66.63 EX.R/W

+66.63 EX.R/W

+66.63 EX.R/W

+66.63 EX.R/W

+66.63 EX.R/W

+66.63 EX.R/W

+66.63 EX.R/W

+66.63 EX.R/W

+66.63 EX.R/W

+66.63 EX.R/W

+66.63 EX.R/W

+66.63 EX.R/W

+66.63 EX.R/W

+66.63 EX.R/W

+66.63 EX.R/W

+66.63 EX.R/W

+66.63 EX.R/W

+66.63 EX.R/W

+66.63 EX.R/W

+66.63 EX.R/W

+66.63 EX.R/W

+66.63 EX.R/W

+66.63 EX.R/W

+66.63 EX.R/W

+66.63 EX.R/W

+66.63 EX.R/W

+66.63 EX.R/W

+66.63 EX.R/W

+66.63 EX.R/W

+66.63 EX.R/W

+66.63 EX.R/W

+66.63 EX.R/W

+66.63 EX.R/W

+66.63 EX.R/W

+66.63 EX.R/W

+66.63 EX.R/W

+66.63 EX.R/W

+66.63 EX.R/W

+66.63 EX.R/W

+66.63 EX.R/W

+66.63 EX.R/W

+66.63 EX.R/W

+66.63 EX.R/W

+66.63 EX.R/W

+66.63 EX.R/W

+66.63 EX.R/W

+66.63 EX.R/W

+66.63 EX.R/W

+66.63 EX.R/W

+66.63 EX.R/W

+66.63 EX.R/W

+66.63 EX.R/W

+66.63 EX.R/W

+66.63 EX.R/W

+66.63 EX.R/W

+66.63 EX.R/W

+66.63 EX.R/W

+66.63 EX.R/W

+66.63 EX.R/W

+66.63 EX.R/W

+66.63 EX.R/W

+66.63 EX.R/W

+66.63 EX.R/W

+66.63 EX.R/W

+66.63 EX.R/W

+66.63 EX.R/W

+66.63 EX.R/W

+66.63 EX.R/W

+66.63 EX.R/W

+66.63 EX.R/W

+66.63 EX.R/W

+66.63 EX.R/W

+66.63 EX.R/W

+66.63 EX.R/W

+66.63 EX.R/W

+66.63 EX.R/W

+66.63 EX.R/W

+66.63 EX.R/W

+66.63 EX.R/W

+66.63 EX.R/W

+66.63 EX.R/W

+66.63 EX.R/W

+66.63 EX.R/W

+66.63 EX.R/W

+66.63 EX.R/W

+66.63 EX.R/W

+66.63 EX.R/W